

# **Vegetative Dynamic Modeling for the SAMBI DSL Project**

Todd S. Earnhardt

Biodiversity and Spatial Information Center, NC State University, Raleigh, NC 27695

## **INTRODUCTION**

In the Southeastern U.S. rapid urbanization, climate change, and the direct and indirect impacts of those two dynamics on ecosystems are major challenges to developing long-term conservation strategies. In this project we modeled future landscape conditions under a variety of climate change scenarios in order to provide a context for land use and management decisions. To simulate vegetation dynamics, we used spatially explicit state-and-transition models and ESSA Technologies' Tool for Exploratory Landscape Scenario Analyses (TELSA; ESSA 2008a, ESSA 2008b, Kurz et al. 2000). Our vegetation dynamics projections were integrated with projected urban growth and sea level rise projections to develop the final dataset showing projected landscape conditions. Those projections were then used as input in the landscape prioritization decision support tools being developed at Auburn University.

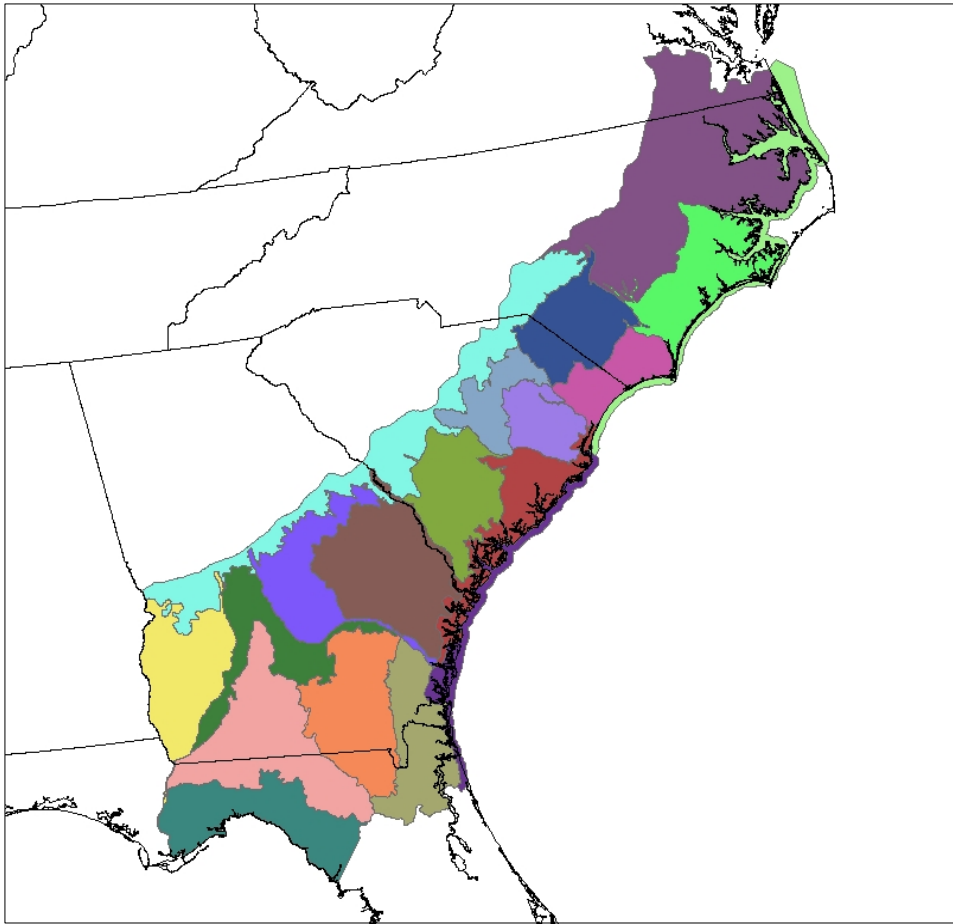
## **METHODS**

### **TELSA Modeling**

There are four major inputs to TELSAs: (1) a polygon map of vegetation types, (2) a non-spatial state-and-transition model for each vegetation type, (3) an initial age for each polygon, and (4) an initial structural stage for each polygon. The vegetation polygons are tracked through time with respect to their condition (state and stage) as a result of three general processes; succession, disturbance, and management. Succession is deterministic and disturbances are stochastic (e.g., fire, insect outbreak) processes are modeled.

The SAMBI region was divided into 20 sub-regions based on Omernik Level IV ecoregion boundaries (U. S. EPA 2011), and vegetation dynamics were simulated across each sub-region separately (Figure 1). This was required due to computational limitations but also served as an additional hierarchical level within the modeling framework where transition parameters could be adjusted to reflect the local dynamics more precisely.

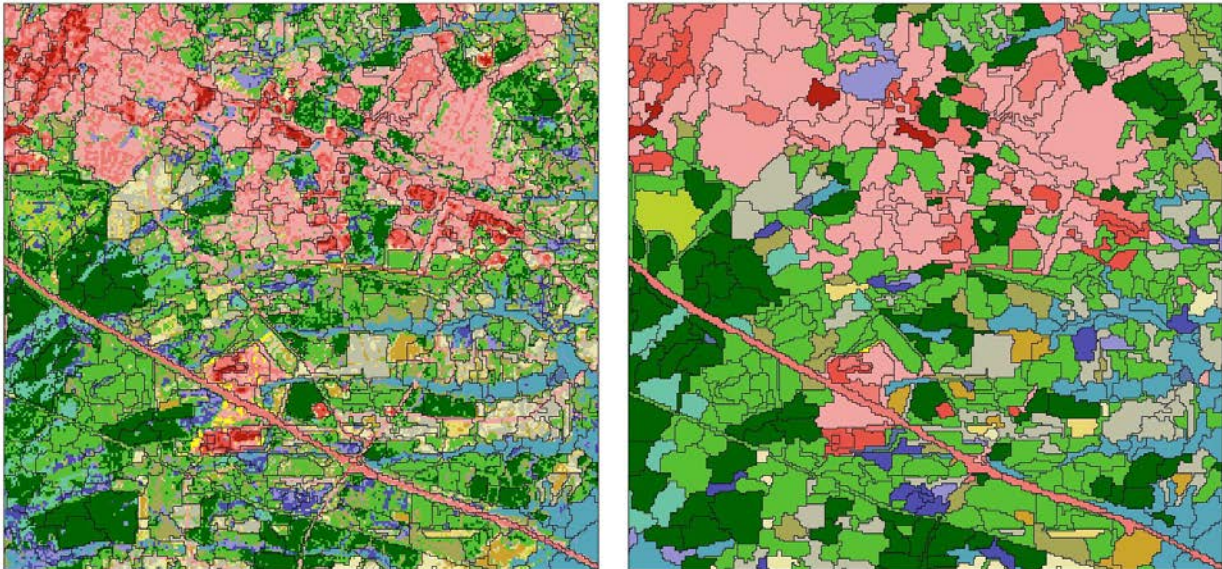
Figure 1. SAMBI Subregions Based on Omernik Level IV Ecoregions



## Polygon Land Cover Map

For each sub-region, polygons of land cover patterns were created using eCognition Elements 4.0 software (Definiens Imaging 2004) with a leaf on tassell-capped transformation of ca. 2001 Landsat TM imagery (Huang et al. 2002). The resulting polygons were then converted into a raster layer that maintained the unique ID of each polygon. Polygons were then attributed with the Southeast Gap Analysis Project ([www.basinc.ncsu.edu/segap/](http://www.basinc.ncsu.edu/segap/)) ecological systems land cover type using a zonal majority function (Figure 2). A similar process was followed to attribute percent canopy cover and succession class from the LANDFIRE project (Rollins et al. 2008), and ownership (USGS National Gap Analysis Program 2008) to each polygon as well.

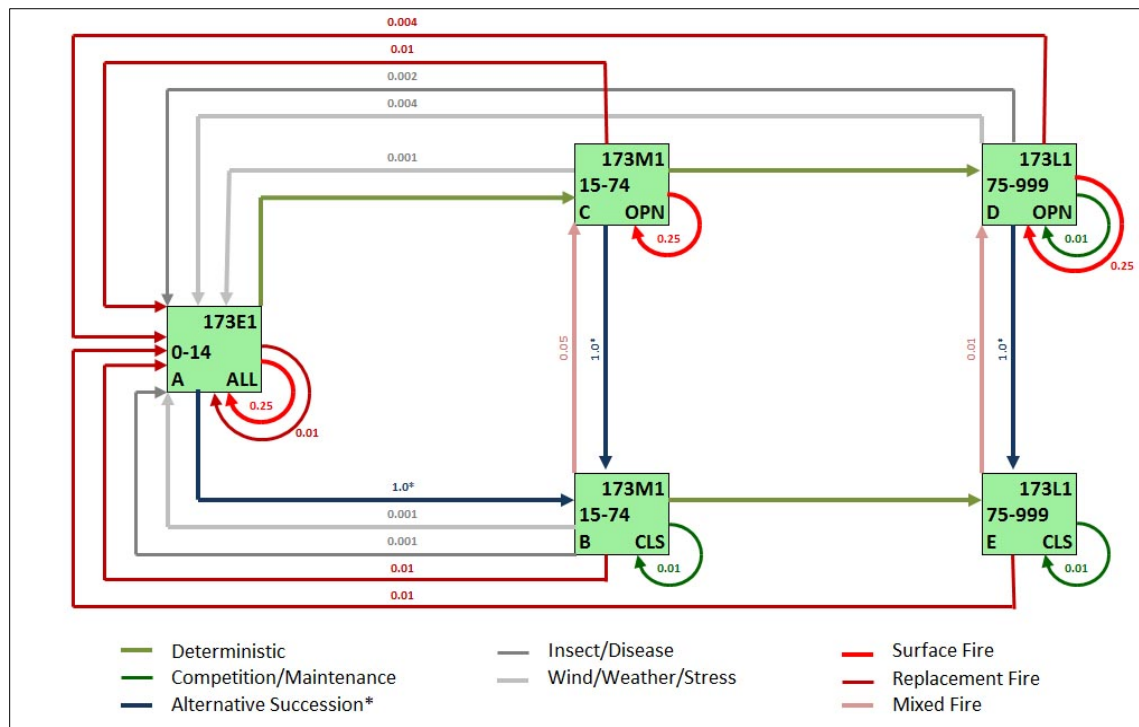
Figure 2. Reclass of Land Cover Polygons Using The Zonal Majority Function



## State and Transition Models

The state-and-transition models we used were modified from the LANDFIRE Vegetation Dynamics Development Tool (VDDT) models (Smith et al. 2009). Those models had been developed in a series of regional workshops where ecologists familiar with the vegetation described the state and stage for each vegetation type and assigned probabilities of each disturbance (Figure 3). Each stage box has notation for class id, age range, sub-category id, and canopy closure class.

Figure 3. State-Transition Box Model



Some VDDT models have an Alternative Succession transition pathway. This pathway allows for an alternative to the deterministic transition of the ecological system under certain timeline and disturbance conditions. This pathway functions similarly to a deterministic pathway in that it has a probability of 1 and will occur if the specific time and disturbance criteria are met. In the Atlantic Coastal Plain example, an Alternative Succession pathway exists for a transition from box A (post replacement) to box B (mid-succession, closed canopy) if 10 years pass without any fire disturbance. If there is a fire, then it will take the polygon in the post replacement condition 14 years before transition to the mid succession, closed canopy condition. We developed two additional VDDT models to simulate the dynamics in publically and privately owned managed pine stands. In the SAMBI region, intensively managed pine stands (almost exclusively Loblolly Pine) are a major part of the forested landscape are readily identifiable on the landscape due to their conspicuous spectral signature and spatial pattern. The primary disturbance in these models is related to management activities (clearcuts, thinning, planting). We labeled these managed pine stands as public based on an overlay operation with the USGS Protected Areas Database layer. The difference between vegetation dynamics in publicly owned versus privately owned stands was a longer rotation time in the public lands.

One hundred forty of the 168 ecological systems and land use classes in the baseline land cover map (SEGAP citation) were modeled in TELSA for the SAMBI region. The remaining 20 classes were considered un-projectable because they were not ecological systems (e.g. water, agriculture) or did not have a LANDFIRE VDDT model associated with them. These classes were held constant throughout the model run and remained unchanged unless the polygons were converted to urban or inundated by sea level rise. State transition probabilities are provided for age and disturbance in Appendices A and B.

### *Climate Change Influence on Fire Regime*

The vegetation dynamics models for the SAMBI incorporated the influence of projected climate change via changes to the fire regime. Time series regression was first used to estimate the relationship between climate and the amount of monthly acreage burned by wildfires. Monthly temperature and precipitation were used as predictors for both the current month's model estimate as well as observed temperature and precipitation for previous months to capture the long-term moisture budget. Once the parameters of the statistical model were estimated, empirically downscaled climate projections were used to project changes in the amount of acreage burned for a given CO<sub>2</sub> emissions scenario. The uncertainty in the climate projections was quantified and propagated using model weights derived from Bayesian Model Averaging (BMA; Raftery et al. 2005; Bhat et al. 2011). The predictive variance for the probabilistic fire regime change projection was estimated using the Expectation Maximization algorithm (Dempster 1977) based on comparisons of the hindcast downscaled GCM output and the observed fire conditions. The predictive variance estimate was obtained by holding the GCM weights constant based on the BMA analysis. The modeled relationship was then used to project future wildfire frequencies under anticipated climate conditions projected by three emissions scenarios; A2, B1, A1B. The three climate scenarios represent a gradient of projected atmospheric CO<sub>2</sub> levels and the associated effects of those levels on temperature and rainfall patterns. Changes in fire disturbance resulting from shifts in the climate would be reflected in the state and stage of vegetation. For example, increased fire disturbance would tend to keep systems subject to fire disturbance in an early succession stage.

## Initial Age and State Class Assignment

Each polygon was assigned an initial ecological system label, age, succession class, and structure class. The ecological system, stage, and structure information were from the zonal majority operations described previously. An initial age for the polygons was assigned based on the US Forest Service FIA database forest type age distributions. The ecological systems were cross-walked to FIA forest types. A database query generated a proportional area for each age class in the FIA survey cycle whose date was closest to 2001. The area proportions were applied to the total area of each ecological system in each region thus establishing target areas for each age and ecological system combination. For each forest type, the ecological system polygons were randomly assigned an age value and the area of that polygon was added to that group's cumulative area total. This was repeated until the area target for that age and ecological system combination was reached. Provisions were made to ensure that ages were consistent with the implicit boundaries of the ecological systems succession stage and canopy cover (e.g., an early succession stand would not be assigned an age of 88 years).

The State Class ID that TELSA uses to model the polygons is a combination of an ecological system code, succession stage code (early [post-disturbance], mid, or late stage), and canopy structure code (early succession, closed, or open). The polygons were tracked with respect to their age and condition (state and stage) as a result of three general processes; succession, disturbance, and management.

## Integration of Urban Growth and Sea Level Rise Model Output

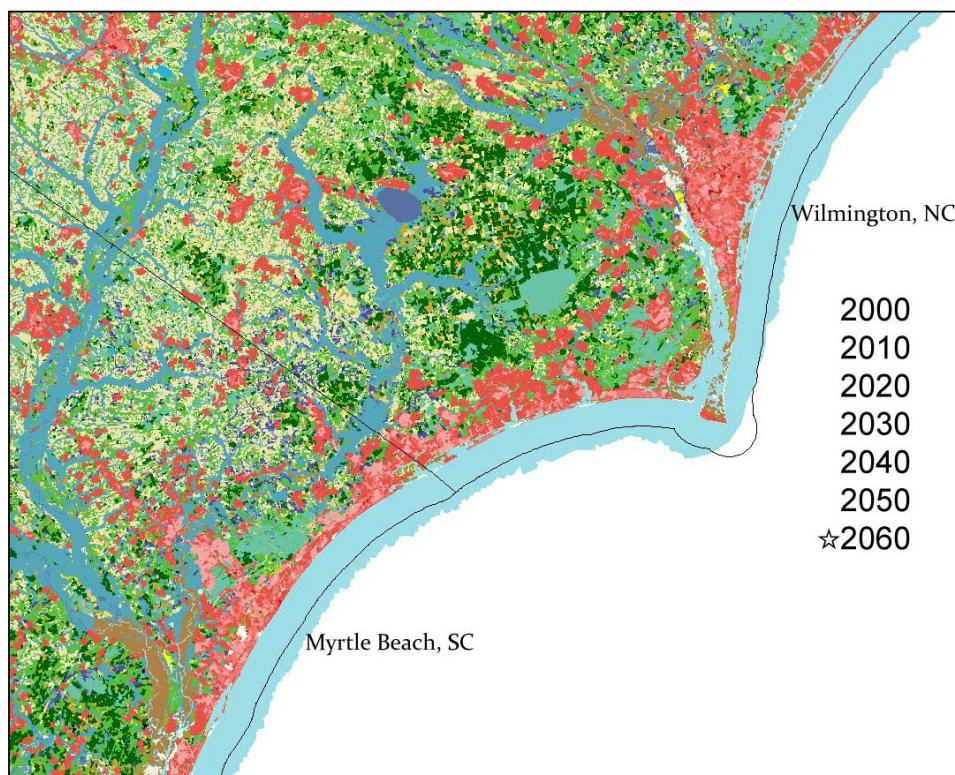
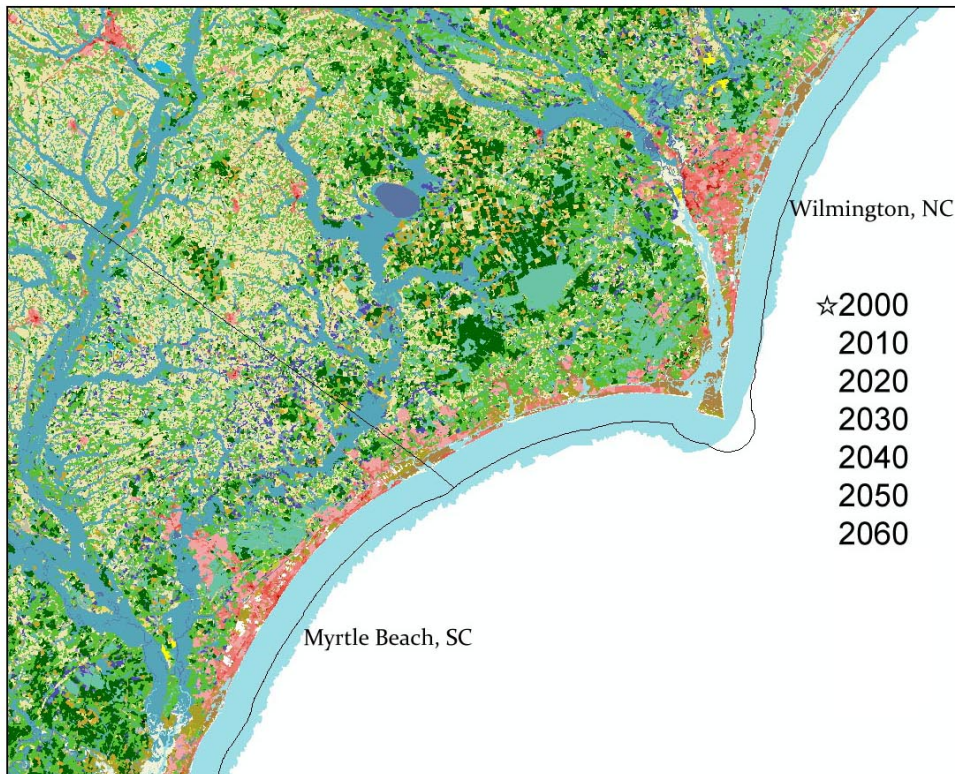
After the map preparation and initial state class assignment, we used TELSA to simulate vegetation dynamics for 100 years for each climate scenario (2001-2100). Mapped output was generated at decadal time intervals. In a separate modeling effort, urban growth and sea level rise were simulated for the SAMBI region. These data layers were incorporated into the vegetation succession model output using zonal majority operations. Urban growth predictions took precedence over any transitions projected in the SLAMM output layers.

Urban growth projections were modeled independently with SLEUTH-3r model (Jantz et al, 2009) (see Urban Growth Modeling; [basic.ncsu.edu/dsl/](http://basic.ncsu.edu/dsl/)) and were used to identify vegetation polygons that were projected to transition from a vegetated to an urban cover type. Polygons were classified as urban if 50% or more of the pixels within the polygon had a greater than or equal to 50% probability of being converted to urban.

We incorporated sea level rise projections from Sea-Level Affecting Marshes Model (SLAMM; Clough 2008) (see Sealevel Rise Modeling; [basic.ncsu.edu/dsl/](http://basic.ncsu.edu/dsl/)) into the land cover maps independent of the TELSA modeling. For each TELSA output map, SLAMM data were used to reflect the conversion of land cover classes to alternate classes due to sea level rise projections. Each initial polygon was characterized with respect to the SLAMM data using a majority function. If the majority of the pixels within a vegetation polygon were "changed" pixels, the polygon was toggled to the appropriate class. When the transition had a one to one relationship with an ecological system, that system label was applied to the polygon. In some cases, there was a one-to-many relationship of a SLAMM class to ecological systems. In these cases, we used a spreadsheet script to analyze tables of adjacent polygons to determine the new ecological system label to apply to the SLAMM transformed polygons. If an adjacent polygon was labeled with an ecological system that satisfied the SLAMM crosswalk criteria, then the transformed polygon was assigned that label. Otherwise, the polygon was assigned the most common occurring related ecological system.



Figure 4. Integrated Land Cover Model Representing 2000 and 2060



Once the SLEUTH and SLAMM outputs had been integrated with the vegetation dynamics projections, the TELSA output tables were joined to the spatial data layers to create a grid for each 10 year time step. This was done for each of the climate scenarios by sub-region. The sub-region grids were then merged into one contiguous data layer for the SAMBI region (Table 1).

Table 1. Final Vegetation Dynamics Datasets ([www.basic.ncsu.edu/dsl](http://www.basic.ncsu.edu/dsl))

File Name	Dataset Name	Year	Climate Change Scenario
DSL-SAMBI_lc00ab0.zip	a1b_2000	2000	a1b
DSL-SAMBI_lc10ab0.zip	a1b_2010	2010	a1b
DSL-SAMBI_lc20ab0.zip	a1b_2020	2020	a1b
DSL-SAMBI_lc30ab0.zip	a1b_2030	2030	a1b
DSL-SAMBI_lc40ab0.zip	a1b_2040	2040	a1b
DSL-SAMBI_lc50ab0.zip	a1b_2050	2050	a1b
DSL-SAMBI_lc60ab0.zip	a1b_2060	2060	a1b
DSL-SAMBI_lc70ab0.zip	a1b_2070	2070	a1b
DSL-SAMBI_lc80ab0.zip	a1b_2080	2080	a1b
DSL-SAMBI_lc90ab0.zip	a1b_2090	2090	a1b
DSL-SAMBI_lc99ab0.zip	a1b_2100	2100	a1b
DSL-SAMBI_lc00a20.zip	a2_2000	2000	a2
DSL-SAMBI_lc10a20.zip	a2_2010	2010	a2
DSL-SAMBI_lc20a20.zip	a2_2020	2020	a2
DSL-SAMBI_lc30a20.zip	a2_2030	2030	a2
DSL-SAMBI_lc40a20.zip	a2_2040	2040	a2
DSL-SAMBI_lc50a20.zip	a2_2050	2050	a2
DSL-SAMBI_lc60a20.zip	a2_2060	2060	a2
DSL-SAMBI_lc70a20.zip	a2_2070	2070	a2
DSL-SAMBI_lc80a20.zip	a2_2080	2080	a2
DSL-SAMBI_lc90a20.zip	a2_2090	2090	a2
DSL-SAMBI_lc99a20.zip	a2_2100	2100	a2
DSL-SAMBI_lc00b10.zip	b1_2000	2000	b1
DSL-SAMBI_lc10b10.zip	b1_2010	2010	b1
DSL-SAMBI_lc20b10.zip	b1_2020	2020	b1
DSL-SAMBI_lc30b10.zip	b1_2030	2030	b1
DSL-SAMBI_lc40b10.zip	b1_2040	2040	b1
DSL-SAMBI_lc50b10.zip	b1_2050	2050	b1
DSL-SAMBI_lc60b10.zip	b1_2060	2060	b1
DSL-SAMBI_lc70b10.zip	b1_2070	2070	b1
DSL-SAMBI_lc80b10.zip	b1_2080	2080	b1
DSL-SAMBI_lc90b10.zip	b1_2090	2090	b1
DSL-SAMBI_lc99b10.zip	b1_2100	2100	b1

## LITERATURE CITED

- Bhat, S.K., M. Haran, A. Terando, R. Tonkonojekov, and K. Keller, 2011: Climate projections using Bayesian model averaging and space-time dependence. *Journal of Agricultural and Environmental Statistics*, 16, 606-628.
- Comer, P., D. Faber-Langendoen, R. Evans, S. Gawler, C. Josse, G. Kittel, S. Menard, M. Pyne, M. Reid, K. Schulz, K. Snow, and J. Teague. 2003. *Ecological Systems of the United States: A Working Classification of U.S. Terrestrial Systems*. NatureServe, Arlington, Virginia.
- Clough, J. S. 2008. SLAMM 5.0.1. Technical documentation and executable program downloadable from <http://www.warrenpinnacle.com/prof/SLAMM/index.html>.
- Definiens Imaging 2004. eCognition Elements Users Guide 4. Definiens Imaging GmbH, München, Germany. 26 pp.
- Dempster, A.P., N.M. Laird, and D.B. Rubin, 1977: Maximum likelihood from incomplete data via the EM algorithm. *Journal of the Royal Statistical Society*, 39B, 1-39.
- ESSA Technologies Ltd. 2008a. [TELSA: Tool for Exploratory Landscape Scenario Analyses, Model Description, Version 3.6](#). Vancouver, BC. 64 pp.
- ESSA Technologies Ltd. 2008b. [TELSA – Tool for Exploratory Landscape Scenario Analyses: User's Guide Version 3.6](#). Prepared by ESSA Technologies Ltd., Vancouver, BC. 235 pp.
- Huang, C., B. Wylie, L. Yang, C. Homer, and G. Zylstra. 2002. Derivation of a tasseled cap transformation based on Landsat 7 at-satellite reflectance. *International Journal of Remote Sensing*, 23(8)1741-1748.
- Jantz, C. A., S.J. Goetz, D. Donato and P. Claggett. Designing and Implementing a Regional Urban Modeling System Using the SLEUTH Cellular Urban Model. *Computers, Environment and Urban Systems* (2009), doi:10/1016/j.compenvurbsys.2009.08.03
- Kurz, W.A., S.J. Beukema, W. Klenner, J.A. Greenough, D.C.E. Robinson, A.D. Sharpe, and T.M. Webb 2001. TELSAs: The Tool for Exploratory Landscape Scenario Analyses. *Computers and Electronics in Agriculture*, 27(1-2) 227-242.
- Raftery, A.E., T. Gneiting, F. Balabdaoui, and M. Polakowski, 2005: Using Bayesian model averaging to calibrate forecast ensembles. *Monthly Weather Review*, 133, 1155-1174.
- Rollins, Matthew G.; Frame, Christine K., tech. eds. 2006. The LANDFIRE Prototype Project: nationally consistent and locally relevant geospatial data for wildland fire management. Gen. Tech. Rep. RMRS-GTR-175. Fort Collins: U.S. Department of Agriculture, Forest Service, Rocky Mountain Research Station. 416 p.
- Smith, J., K. Blankenship, D. Johnson, S. Simon, C. Ryan, R. Swaty, M. Bucher, M. Brod and J. Patton. Adapting LANDFIRE Vegetation Dynamics Models. August 2009. Last accessed 24 April 2012 - <http://www.conservationgateway.org/file/adapting-landfire-vegetation-dynamics-models>].
- U.S. Environmental Protection Agency. 2011. Level III and IV Ecoregions of the Conterminous United States. U.S. EPA Office of Research and Development. [Last accessed 24 April 2012 - [http://www.epa.gov/wed/pages/ecoregions/level\\_iii\\_iv.htm#Level IV](http://www.epa.gov/wed/pages/ecoregions/level_iii_iv.htm#Level IV)]
- U.S.G.S. National Gap Analysis Program. 2008. Southeast GAP Regional Land Cover 2001. Biodiversity and Spatial Information Center, North Carolina Cooperative Fish and Wildlife Research Unit, NC State University (<http://www.basic.ncsu.edu/segap/> last accessed 18 October 2010).



## Appendix A. State Age Transition Probabilities

From State Class ID	From StateClass Name	Initial Age	End Age	To State Class ID	To StateClass Name
105711	Post replacement Early-development Southern Coastal Plain Dry Upland Hardwood Forest	0	14	305721	Open canopy Mid-development Southern Coastal Plain Dry Upland Hardwood Forest
106611	Post replacement Early-development Southern Piedmont Dry Oak-(Pine) Forest - Hardwood Modifier	0	15	306621	Open canopy Mid-development Southern Piedmont Dry Oak-(Pine) Forest - Hardwood Modifier
107611	Post replacement Early-development Florida Longleaf Pine Sandhill- Open Understory	0	15	307621	Open canopy Mid-development Florida Longleaf Pine Sandhill- Open Understory
107711	Post replacement Early-development Florida Longleaf Pine Sandhill - Scrub/Shrub Understory	0	15	307721	Open canopy Mid-development Florida Longleaf Pine Sandhill - Scrub/Shrub Understory
107911	Post replacement Early-development EGCP Maritime Forest	0	15	307921	Open canopy Mid-development EGCP Maritime Forest
109011	Post replacement Early-development Atlantic Coastal Plain Fall-Line Sandhills Longleaf Pine Woodland - Loblolly Modifier	0	14	309021	Open canopy Mid-development Atlantic Coastal Plain Fall-Line Sandhills Longleaf Pine Woodland - Loblolly Modifier
109111	Post replacement Early-development Atlantic Coastal Plain Fall-line Sandhills Longleaf Pine Woodland - Open Understory Modifier	0	14	309121	Open canopy Mid-development Atlantic Coastal Plain Fall-line Sandhills Longleaf Pine Woodland - Open Understory Modifier
109511	Post replacement Early-development East Gulf Coastal Plain Interior Upland Longleaf Pine Woodland - Open Understory Modifier	0	12	309521	Open canopy Mid-development East Gulf Coastal Plain Interior Upland Longleaf Pine Woodland - Open Understory Modifier
109611	Post replacement Early-development East Gulf Coastal Plain Interior Upland Longleaf Pine Woodland - Scrub/Shrub	0	12	309621	Open canopy Mid-development East Gulf Coastal Plain Interior Upland Longleaf Pine Woodland - Scrub/Shrub
109911	Post replacement Early-development Southern Coastal Plain Oak Dome and Hammock	0	14	309921	Open canopy Mid-development Southern Coastal Plain Oak Dome and Hammock
110811	Post replacement Early-development Southern Piedmont Dry Oak-(Pine) Forest - Mixed Modifier	0	15	310821	Open canopy Mid-development Southern Piedmont Dry Oak-(Pine) Forest - Mixed Modifier
112411	Post replacement Early-development Florida Peninsula Inland Scrub	0	5	212421	Closed canopy Mid-development Florida Peninsula Inland Scrub
114011	Post replacement Early-development Mississippi River Riparian Forest	0	19	214021	Closed canopy Mid-development Mississippi River Riparian Forest
114121	Post replacement Mid-development East Gulf Coastal Plain Dune and Coastal Grassland	2	999	114121	Post replacement Mid-development East Gulf Coastal Plain Dune and Coastal Grassland
114131	Post replacement Late-development East Gulf Coastal Plain Dune and Coastal Grassland	30	999	114131	Post replacement Late-development East Gulf Coastal Plain Dune and Coastal Grassland
114211	Post replacement Early-development East Gulf Coastal Plain Near-Coast Pine Flatwoods - Scrub/Shrub	0	14	314221	Open canopy Mid-development East Gulf Coastal Plain Near-Coast Pine Flatwoods - Scrub/Shrub
114311	Post replacement Early-development Central Florida Pine Flatwoods	0	14	314321	Open canopy Mid-development Central Florida Pine Flatwoods
114411	Post replacement Early-development Atlantic Coastal Plain Brownwater Stream Floodplain Forest	0	19	214421	Closed canopy Mid-development Atlantic Coastal Plain Brownwater Stream Floodplain Forest
114611	Post replacement Early-development East Gulf Coastal Plain Small Stream and River Floodplain Forest	0	19	214621	Closed canopy Mid-development East Gulf Coastal Plain Small Stream and River Floodplain Forest
114711	Post replacement Early-development Southern Coastal Plain Blackwater River Floodplain Forest	0	19	214721	Closed canopy Mid-development Southern Coastal Plain Blackwater River Floodplain Forest
114811	Post replacement Early-development East Gulf Coastal Plain Large River Floodplain Forest - Forest Modifier	0	19	214821	Closed canopy Mid-development East Gulf Coastal Plain Large River Floodplain Forest - Forest Modifier
115011	Post replacement Early-development Southern Coastal Plain Nonriverine Basin Swamp	0	10	215021	Closed canopy Mid-development Southern Coastal Plain Nonriverine Basin Swamp
115111	Post replacement Early-development Atlantic Coastal Plain Northern Basin Swamp and Wet Hardwood Forest	0	10	215121	Closed canopy Mid-development Atlantic Coastal Plain Northern Basin Swamp and Wet Hardwood Forest
115211	Post replacement Early-development Atlantic Coastal Plain Nonriverine Swamp and Wet Hardwood Forest - Oak Dominated Modifier	0	7	215221	Closed canopy Mid-development Atlantic Coastal Plain Nonriverine Swamp and Wet Hardwood Forest - Oak Dominated Modifier
115211	Post replacement Early-development Atlantic Coastal Plain Nonriverine Swamp and Wet Hardwood Forest - Oak Dominated Modifier	0	10	215221	Closed canopy Mid-development Atlantic Coastal Plain Nonriverine Swamp and Wet Hardwood Forest - Oak Dominated Modifier
115311	Post replacement Early-development Atlantic Coastal Plain Southern Tidal Wooded Swamp	0	10	215321	Closed canopy Mid-development Atlantic Coastal Plain Southern Tidal Wooded Swamp
115411	Post replacement Early-development Atlantic Coastal Plain Small Brownwater River Floodplain Forest	0	19	215421	Closed canopy Mid-development Atlantic Coastal Plain Small Brownwater River Floodplain Forest
115511	Post replacement Early-development East Gulf Coastal Plain Near-Coast Pine Flatwoods - Open	0	14	315521	Open canopy Mid-development East Gulf Coastal Plain Near-Coast Pine Flatwoods - Open
115611	Post replacement Early-development East Gulf Coastal Plain Near-Coast Pine Flatwoods - Offsite Hardwood	0	14	315621	Open canopy Mid-development East Gulf Coastal Plain Near-Coast Pine Flatwoods - Offsite Hardwood
115811	Post replacement Early-development Atlantic Coastal Plain Southern Maritime Forest	0	15	315821	Open canopy Mid-development Atlantic Coastal Plain Southern Maritime Forest
115811	Post replacement Early-development Atlantic Coastal Plain Southern Maritime Forest	0	20	315821	Open canopy Mid-development Atlantic Coastal Plain Southern Maritime Forest
116111	Post replacement Early-development Atlantic Coastal Plain Northern Maritime Forest	0	11	116122	Post replacement Mid-development Atlantic Coastal Plain Northern Maritime Forest

From State Class ID	From StateClass Name	Initial Age	End Age	To State Class ID	To StateClass Name
116122	Post replacement Mid-development Atlantic Coastal Plain Northern Maritime Forest	12	59	316131	Open canopy Late-development Atlantic Coastal Plain Northern Maritime Forest
116211	Post replacement Early-development Atlantic Coastal Plain Central Maritime Forest	0	20	316221	Open canopy Mid-development Atlantic Coastal Plain Central Maritime Forest
116411	Post replacement Early-development Southern Coastal Plain Nonriverine Cypress Dome	0	15	316421	Open canopy Mid-development Southern Coastal Plain Nonriverine Cypress Dome
116511	Post replacement Early-development Southern Piedmont Large Floodplain Forest - Forest Modifier	0	19	216521	Closed canopy Mid-development Southern Piedmont Large Floodplain Forest - Forest Modifier
116711	Post replacement Early-development East Gulf Coastal Plain Interior Upland LL Pine Woodland - Loblolly Modifier	0	12	316721	Open canopy Mid-development East Gulf Coastal Plain Interior Upland LL Pine Woodland - Loblolly Modifier
116811	Post replacement Early-development Southern Piedmont Small Floodplain and Riparian Forest	0	19	216821	Closed canopy Mid-development Southern Piedmont Small Floodplain and Riparian Forest
116911	Post replacement Early-development Southern Piedmont Mesic Forest	0	15	216921	Closed canopy Mid-development Southern Piedmont Mesic Forest
117011	Post replacement Early-development Southern Piedmont Dry Oak-(Pine) Forest - Loblolly Pine Modifier	0	15	317021	Open canopy Mid-development Southern Piedmont Dry Oak-(Pine) Forest - Loblolly Pine Modifier
117111	Post replacement Early-development Atlantic Coastal Plain Xeric River Dune	0	5	217121	Closed canopy Mid-development Atlantic Coastal Plain Xeric River Dune
117211	Post replacement Early-development East Gulf Coastal Plain Interior Upland Longleaf Pine Woodland - Offsite Hardwood Modifier	0	12	317221	Open canopy Mid-development East Gulf Coastal Plain Interior Upland Longleaf Pine Woodland - Offsite Hardwood Modifier
117311	Post replacement Early-development Atlantic Coastal Plain Fall-line Sandhills Longleaf Pine Woodland - Offsite Hardwood Modifier	0	14	317321	Open canopy Mid-development Atlantic Coastal Plain Fall-line Sandhills Longleaf Pine Woodland - Offsite Hardwood Modifier
117711	Post replacement Early-development Atlantic Coastal Plain Northern Tidal Wooded Swamp	0	10	217721	Closed canopy Mid-development Atlantic Coastal Plain Northern Tidal Wooded Swamp
117811	Post replacement Early-development Atlantic Coastal Plain Nonriverine Swamp and Wet Hardwood Forest - Taxodium/Nyssa Modifier	0	7	217821	Closed canopy Mid-development Atlantic Coastal Plain Nonriverine Swamp and Wet Hardwood Forest - Taxodium/Nyssa Modifier
117911	Post replacement Early-development Atlantic Coastal Plain Peatland Pocosin	0	4	317921	Open canopy Mid-development Atlantic Coastal Plain Peatland Pocosin
118011	Post replacement Early-development Southern Coastal Plain Seepage Swamp and Baygall	0	15	218021	Closed canopy Mid-development Southern Coastal Plain Seepage Swamp and Baygall
118111	Post replacement Early-development Central Atlantic Coastal Plain Wet Longleaf Pine Savanna and Flatwoods	0	14	318121	Open canopy Mid-development Central Atlantic Coastal Plain Wet Longleaf Pine Savanna and Flatwoods
118311	Post replacement Early-development Atlantic Coastal Plain Blackwater Stream Floodplain Forest - Forest Modifier	0	19	218321	Closed canopy Mid-development Atlantic Coastal Plain Blackwater Stream Floodplain Forest - Forest Modifier
118411	Post replacement Early-development Atlantic Coastal Plain Streamhead Seepage Swamp, Pocosin, and Baygall	0	8	218421	Closed canopy Mid-development Atlantic Coastal Plain Streamhead Seepage Swamp, Pocosin, and Baygall
118511	Post replacement Early-development Atlantic Coastal Plain Small Blackwater River Floodplain Forest	0	19	218521	Closed canopy Mid-development Atlantic Coastal Plain Small Blackwater River Floodplain Forest
118611	Post replacement Early-development Atlantic Coastal Plain Dry and Dry-Mesic Oak Forest	0	14	318621	Open canopy Mid-development Atlantic Coastal Plain Dry and Dry-Mesic Oak Forest
118811	Post replacement Early-development Atlantic Coastal Plain Mesic Hardwood and Mixed Forest	0	14	218821	Closed canopy Mid-development Atlantic Coastal Plain Mesic Hardwood and Mixed Forest
119011	Post replacement Early-development Atlantic Coastal Plain Clay-Based Carolina Bay Forested Wetland	0	10	319021	Open canopy Mid-development Atlantic Coastal Plain Clay-Based Carolina Bay Forested Wetland
119111	Post replacement Early-development Atlantic Coastal Plain Southern Wet Pine Savanna and Flatwoods	0	14	319121	Open canopy Mid-development Atlantic Coastal Plain Southern Wet Pine Savanna and Flatwoods
119211	Post replacement Early-development Atlantic Coastal Plain Fall-line Sandhills Longleaf Pine Woodland - Scrub/Shrub Understory Modifier	0	14	319221	Open canopy Mid-development Atlantic Coastal Plain Fall-line Sandhills Longleaf Pine Woodland - Scrub/Shrub Understory Modifier
119311	Post replacement Early-development Atlantic Coastal Plain Upland Longleaf Pine Woodland	0	14	319321	Open canopy Mid-development Atlantic Coastal Plain Upland Longleaf Pine Woodland
119411	Post replacement Early-development Southern Coastal Plain Hydric Hammock	0	10	219421	Closed canopy Mid-development Southern Coastal Plain Hydric Hammock
120111	Post replacement Early-development Evergreen Plantations or Managed Pine (can include dense successional regrowth)	0	21	220121	Closed canopy Mid-development Evergreen Plantations or Managed Pine (can include dense successional regrowth)
120411	Post replacement Early-development Public Evergreen Plantations or Managed Pine (can include dense successional regrowth)	0	21	220421	Closed canopy Mid-development Public Evergreen Plantations or Managed Pine (can include dense successional regrowth)
121911	Post replacement Early-development Atlantic Coastal Plain Large Natural Lakeshore	0	10	321921	Open canopy Mid-development Atlantic Coastal Plain Large Natural Lakeshore
122811	Post replacement Early-development Floridian Highlands Freshwater Marsh	0	1	222821	Closed canopy Mid-development Floridian Highlands Freshwater Marsh
123111	Post replacement Early-development Southern Coastal Plain Herbaceous Seepage Bog	0	10	223121	Closed canopy Mid-development Southern Coastal Plain Herbaceous Seepage Bog
123311	Post replacement Early-development East Gulf Coastal Plain Treeless Savanna and Wet Prairie	0	14	323321	Open canopy Mid-development East Gulf Coastal Plain Treeless Savanna and Wet Prairie
125011	Post replacement Early-development East Gulf Coastal Plain Tidal Wooded Swamp	0	10	225021	Closed canopy Mid-development East Gulf Coastal Plain Tidal Wooded Swamp
136911	Post replacement Early-development Southern Coastal Plain Nonriverine Swamp and Wet Hardwood Forest - Taxodium Modifier	0	7	236921	Closed canopy Mid-development Southern Coastal Plain Nonriverine Swamp and Wet Hardwood Forest - Taxodium Modifier
137011	Post replacement Early-development Southern Coastal Plain Nonriverine Basin Swamp - Okefenokee Bay/Gum Modifier	0	10	237021	Closed canopy Mid-development Southern Coastal Plain Nonriverine Basin Swamp - Okefenokee Bay/Gum Modifier

From State Class ID	From StateClass Name	Initial Age	End Age	To State Class ID	To StateClass Name
137111	Post replacement Early-development Southern Coastal Plain Nonriverine Basin Swamp - Okefenokee Pine Modifier	0	10	237121	Closed canopy Mid-development Southern Coastal Plain Nonriverine Basin Swamp - Okefenokee Pine Modifier
137711	Post replacement Early-development Southern Coastal Plain Nonriverine Basin Swamp - Okefenokee Nuphar Modifier	0	10	237721	Closed canopy Mid-development Southern Coastal Plain Nonriverine Basin Swamp - Okefenokee Nuphar Modifier
137811	Post replacement Early-development Southern Coastal Plain Nonriverine Basin Swamp - Okefenokee Clethra Modifier	0	10	237821	Closed canopy Mid-development Southern Coastal Plain Nonriverine Basin Swamp - Okefenokee Clethra Modifier
205721	Closed canopy Mid-development Southern Coastal Plain Dry Upland Hardwood Forest	15	59	205731	Closed canopy Late-development Southern Coastal Plain Dry Upland Hardwood Forest
205731	Closed canopy Late-development Southern Coastal Plain Dry Upland Hardwood Forest	60	460	205731	Closed canopy Late-development Southern Coastal Plain Dry Upland Hardwood Forest
206621	Closed canopy Mid-development Southern Piedmont Dry Oak-(Pine) Forest - Hardwood Modifier	16	75	206631	Closed canopy Late-development Southern Piedmont Dry Oak-(Pine) Forest - Hardwood Modifier
206631	Closed canopy Late-development Southern Piedmont Dry Oak-(Pine) Forest - Hardwood Modifier	76	999	206631	Closed canopy Late-development Southern Piedmont Dry Oak-(Pine) Forest - Hardwood Modifier
207621	Closed canopy Mid-development Florida Longleaf Pine Sandhill- Open Understory	16	75	207631	Closed canopy Late-development Florida Longleaf Pine Sandhill- Open Understory
207631	Closed canopy Late-development Florida Longleaf Pine Sandhill- Open Understory	76	999	207631	Closed canopy Late-development Florida Longleaf Pine Sandhill- Open Understory
207721	Closed canopy Mid-development Florida Longleaf Pine Sandhill - Scrub/Shrub Understory	16	75	207731	Closed canopy Late-development Florida Longleaf Pine Sandhill - Scrub/Shrub Understory
207731	Closed canopy Late-development Florida Longleaf Pine Sandhill - Scrub/Shrub Understory	76	999	207731	Closed canopy Late-development Florida Longleaf Pine Sandhill - Scrub/Shrub Understory
207921	Closed canopy Mid-development EGCP Maritime Forest	16	40	207931	Closed canopy Late-development EGCP Maritime Forest
207931	Closed canopy Late-development EGCP Maritime Forest	41	999	207931	Closed canopy Late-development EGCP Maritime Forest
209021	Closed canopy Mid-development Atlantic Coastal Plain Fall-Line Sandhills Longleaf Pine Woodland - Loblolly Modifier	15	74	209031	Closed canopy Late-development Atlantic Coastal Plain Fall-Line Sandhills Longleaf Pine Woodland - Loblolly Modifier
209031	Closed canopy Late-development Atlantic Coastal Plain Fall-Line Sandhills Longleaf Pine Woodland - Loblolly Modifier	75	999	209031	Closed canopy Late-development Atlantic Coastal Plain Fall-Line Sandhills Longleaf Pine Woodland - Loblolly Modifier
209121	Closed canopy Mid-development Atlantic Coastal Plain Fall-line Sandhills Longleaf Pine Woodland - Open Understory Modifier	15	74	209131	Closed canopy Late-development Atlantic Coastal Plain Fall-line Sandhills Longleaf Pine Woodland - Open Understory Modifier
209131	Closed canopy Late-development Atlantic Coastal Plain Fall-line Sandhills Longleaf Pine Woodland - Open Understory Modifier	75	999	209131	Closed canopy Late-development Atlantic Coastal Plain Fall-line Sandhills Longleaf Pine Woodland - Open Understory Modifier
209521	Closed canopy Mid-development East Gulf Coastal Plain Interior Upland Longleaf Pine Woodland - Open Understory Modifier	13	50	209531	Closed canopy Late-development East Gulf Coastal Plain Interior Upland Longleaf Pine Woodland - Open Understory Modifier
209531	Closed canopy Late-development East Gulf Coastal Plain Interior Upland Longleaf Pine Woodland - Open Understory Modifier	51	999	209531	Closed canopy Late-development East Gulf Coastal Plain Interior Upland Longleaf Pine Woodland - Open Understory Modifier
209621	Closed canopy Mid-development East Gulf Coastal Plain Interior Upland Longleaf Pine Woodland - Scrub/Shrub	13	50	209631	Closed canopy Late-development East Gulf Coastal Plain Interior Upland Longleaf Pine Woodland - Scrub/Shrub
209631	Closed canopy Late-development East Gulf Coastal Plain Interior Upland Longleaf Pine Woodland - Scrub/Shrub	51	999	209631	Closed canopy Late-development East Gulf Coastal Plain Interior Upland Longleaf Pine Woodland - Scrub/Shrub
209921	Closed canopy Mid-development Southern Coastal Plain Oak Dome and Hammock	15	59	209931	Closed canopy Late-development Southern Coastal Plain Oak Dome and Hammock
209931	Closed canopy Late-development Southern Coastal Plain Oak Dome and Hammock	60	460	209931	Closed canopy Late-development Southern Coastal Plain Oak Dome and Hammock
210821	Closed canopy Mid-development Southern Piedmont Dry Oak-(Pine) Forest - Mixed Modifier	16	75	210831	Closed canopy Late-development Southern Piedmont Dry Oak-(Pine) Forest - Mixed Modifier
210831	Closed canopy Late-development Southern Piedmont Dry Oak-(Pine) Forest - Mixed Modifier	76	999	210831	Closed canopy Late-development Southern Piedmont Dry Oak-(Pine) Forest - Mixed Modifier
212421	Closed canopy Mid-development Florida Peninsula Inland Scrub	6	44	212431	Closed canopy Late-development Florida Peninsula Inland Scrub
212431	Closed canopy Late-development Florida Peninsula Inland Scrub	45	999	312431	Open canopy Late-development Florida Peninsula Inland Scrub
214021	Closed canopy Mid-development Mississippi River Riparian Forest	20	79	214031	Closed canopy Late-development Mississippi River Riparian Forest
214031	Closed canopy Late-development Mississippi River Riparian Forest	80	999	214031	Closed canopy Late-development Mississippi River Riparian Forest
214221	Closed canopy Mid-development East Gulf Coastal Plain Near-Coast Pine Flatwoods - Scrub/Shrub	15	60	214231	Closed canopy Late-development East Gulf Coastal Plain Near-Coast Pine Flatwoods - Scrub/Shrub
214231	Closed canopy Late-development East Gulf Coastal Plain Near-Coast Pine Flatwoods - Scrub/Shrub	61	999	214231	Closed canopy Late-development East Gulf Coastal Plain Near-Coast Pine Flatwoods - Scrub/Shrub
214321	Closed canopy Mid-development Central Florida Pine Flatwoods	15	75	214331	Closed canopy Late-development Central Florida Pine Flatwoods
214331	Closed canopy Late-development Central Florida Pine Flatwoods	76	999	214331	Closed canopy Late-development Central Florida Pine Flatwoods
214421	Closed canopy Mid-development Atlantic Coastal Plain Brownwater Stream Floodplain Forest	20	69	214431	Closed canopy Late-development Atlantic Coastal Plain Brownwater Stream Floodplain Forest
214431	Closed canopy Late-development Atlantic Coastal Plain Brownwater Stream Floodplain Forest	70	999	214431	Closed canopy Late-development Atlantic Coastal Plain Brownwater Stream Floodplain Forest



From State Class ID	From StateClass Name	Initial Age	End Age	To State Class ID	To StateClass Name
216221	Closed canopy Mid-development Atlantic Coastal Plain Central Maritime Forest	21	100	216231	Closed canopy Late-development Atlantic Coastal Plain Central Maritime Forest
216231	Closed canopy Late-development Atlantic Coastal Plain Central Maritime Forest	101	999	216231	Closed canopy Late-development Atlantic Coastal Plain Central Maritime Forest
216421	Closed canopy Mid-development Southern Coastal Plain Nonriverine Cypress Dome	16	60	216431	Closed canopy Late-development Southern Coastal Plain Nonriverine Cypress Dome
216431	Closed canopy Late-development Southern Coastal Plain Nonriverine Cypress Dome	61	999	216431	Closed canopy Late-development Southern Coastal Plain Nonriverine Cypress Dome
216521	Closed canopy Mid-development Southern Piedmont Large Floodplain Forest - Forest Modifier	20	69	216531	Closed canopy Late-development Southern Piedmont Large Floodplain Forest - Forest Modifier
216531	Closed canopy Late-development Southern Piedmont Large Floodplain Forest - Forest Modifier	70	500	216531	Closed canopy Late-development Southern Piedmont Large Floodplain Forest - Forest Modifier
216721	Closed canopy Mid-development East Gulf Coastal Plain Interior Upland LL Pine Woodland - Loblolly Modifier	13	50	216731	Closed canopy Late-development East Gulf Coastal Plain Interior Upland LL Pine Woodland - Loblolly Modifier
216731	Closed canopy Late-development East Gulf Coastal Plain Interior Upland LL Pine Woodland - Loblolly Modifier	51	999	216731	Closed canopy Late-development East Gulf Coastal Plain Interior Upland LL Pine Woodland - Loblolly Modifier
216921	Closed canopy Mid-development Southern Piedmont Mesic Forest	16	75	216931	Closed canopy Late-development Southern Piedmont Mesic Forest
216931	Closed canopy Late-development Southern Piedmont Mesic Forest	76	999	216931	Closed canopy Late-development Southern Piedmont Mesic Forest
217021	Closed canopy Mid-development Southern Piedmont Dry Oak-(Pine) Forest - Loblolly Pine Modifier	16	75	217031	Closed canopy Late-development Southern Piedmont Dry Oak-(Pine) Forest - Loblolly Pine Modifier
217031	Closed canopy Late-development Southern Piedmont Dry Oak-(Pine) Forest - Loblolly Pine Modifier	76	999	217031	Closed canopy Late-development Southern Piedmont Dry Oak-(Pine) Forest - Loblolly Pine Modifier
217121	Closed canopy Mid-development Atlantic Coastal Plain Xeric River Dune	6	20	217131	Closed canopy Late-development Atlantic Coastal Plain Xeric River Dune
217131	Closed canopy Late-development Atlantic Coastal Plain Xeric River Dune	21	999	217131	Closed canopy Late-development Atlantic Coastal Plain Xeric River Dune
217221	Closed canopy Mid-development East Gulf Coastal Plain Interior Upland Longleaf Pine Woodland - Offsite Hardwood Modifier	13	50	217231	Closed canopy Late-development East Gulf Coastal Plain Interior Upland Longleaf Pine Woodland - Offsite Hardwood Modifier
217231	Closed canopy Late-development East Gulf Coastal Plain Interior Upland Longleaf Pine Woodland - Offsite Hardwood Modifier	51	999	217231	Closed canopy Late-development East Gulf Coastal Plain Interior Upland Longleaf Pine Woodland - Offsite Hardwood Modifier
217421	Closed canopy Mid-development East Gulf Coastal Plain Limestone Forest	15	59	217431	Closed canopy Late-development East Gulf Coastal Plain Limestone Forest
217431	Closed canopy Late-development East Gulf Coastal Plain Limestone Forest	60	999	217431	Closed canopy Late-development East Gulf Coastal Plain Limestone Forest
217721	Closed canopy Mid-development Atlantic Coastal Plain Northern Tidal Wooded Swamp	11	30	217731	Closed canopy Late-development Atlantic Coastal Plain Northern Tidal Wooded Swamp
217731	Closed canopy Late-development Atlantic Coastal Plain Northern Tidal Wooded Swamp	31	999	217731	Closed canopy Late-development Atlantic Coastal Plain Northern Tidal Wooded Swamp
217821	Closed canopy Mid-development Atlantic Coastal Plain Nonriverine Swamp and Wet Hardwood Forest - Taxodium/Nyssa Modifier	8	70	217831	Closed canopy Late-development Atlantic Coastal Plain Nonriverine Swamp and Wet Hardwood Forest - Taxodium/Nyssa Modifier
217822	Closed canopy Mid-development Atlantic Coastal Plain Nonriverine Swamp and Wet Hardwood Forest - Taxodium/Nyssa Modifier	8	70	217832	Closed canopy Late-development Atlantic Coastal Plain Nonriverine Swamp and Wet Hardwood Forest - Taxodium/Nyssa Modifier
217831	Closed canopy Late-development Atlantic Coastal Plain Nonriverine Swamp and Wet Hardwood Forest - Taxodium/Nyssa Modifier	71	500	217831	Closed canopy Late-development Atlantic Coastal Plain Nonriverine Swamp and Wet Hardwood Forest - Taxodium/Nyssa Modifier
217832	Closed canopy Late-development Atlantic Coastal Plain Nonriverine Swamp and Wet Hardwood Forest - Taxodium/Nyssa Modifier	71	350	217832	Closed canopy Late-development Atlantic Coastal Plain Nonriverine Swamp and Wet Hardwood Forest - Taxodium/Nyssa Modifier
217921	Closed canopy Mid-development Atlantic Coastal Plain Peatland Pocosin	5	40	217931	Closed canopy Late-development Atlantic Coastal Plain Peatland Pocosin
217931	Closed canopy Late-development Atlantic Coastal Plain Peatland Pocosin	41	500	217931	Closed canopy Late-development Atlantic Coastal Plain Peatland Pocosin
218021	Closed canopy Mid-development Southern Coastal Plain Seepage Swamp and Baygall	16	50	218031	Closed canopy Late-development Southern Coastal Plain Seepage Swamp and Baygall
218031	Closed canopy Late-development Southern Coastal Plain Seepage Swamp and Baygall	51	999	218031	Closed canopy Late-development Southern Coastal Plain Seepage Swamp and Baygall
218121	Closed canopy Mid-development Central Atlantic Coastal Plain Wet Longleaf Pine Savanna and Flatwoods	15	74	218131	Closed canopy Late-development Central Atlantic Coastal Plain Wet Longleaf Pine Savanna and Flatwoods
218131	Closed canopy Late-development Central Atlantic Coastal Plain Wet Longleaf Pine Savanna and Flatwoods	75	999	218131	Closed canopy Late-development Central Atlantic Coastal Plain Wet Longleaf Pine Savanna and Flatwoods
218321	Closed canopy Mid-development Atlantic Coastal Plain Blackwater Stream Floodplain Forest - Forest Modifier	20	69	218331	Closed canopy Late-development Atlantic Coastal Plain Blackwater Stream Floodplain Forest - Forest Modifier
218331	Closed canopy Late-development Atlantic Coastal Plain Blackwater Stream Floodplain Forest - Forest Modifier	70	999	218331	Closed canopy Late-development Atlantic Coastal Plain Blackwater Stream Floodplain Forest - Forest Modifier
218421	Closed canopy Mid-development Atlantic Coastal Plain Streamhead Seepage Swamp, Pocosin, and Baygall	9	34	218431	Closed canopy Late-development Atlantic Coastal Plain Streamhead Seepage Swamp, Pocosin, and Baygall
218431	Closed canopy Late-development Atlantic Coastal Plain Streamhead Seepage Swamp, Pocosin, and Baygall	35	999	218431	Closed canopy Late-development Atlantic Coastal Plain Streamhead Seepage Swamp, Pocosin, and Baygall
218521	Closed canopy Mid-development Atlantic Coastal Plain Small Blackwater River Floodplain Forest	20	79	218531	Closed canopy Late-development Atlantic Coastal Plain Small Blackwater River Floodplain Forest
218531	Closed canopy Late-development Atlantic Coastal Plain Small Blackwater River Floodplain Forest	80	999	218531	Closed canopy Late-development Atlantic Coastal Plain Small Blackwater River Floodplain Forest



From State Class ID	From StateClass Name	Initial Age	End Age	To State Class ID	To StateClass Name
218621	Closed canopy Mid-development Atlantic Coastal Plain Dry and Dry-Mesic Oak Forest	15	59	218631	Closed canopy Late-development Atlantic Coastal Plain Dry and Dry-Mesic Oak Forest
218631	Closed canopy Late-development Atlantic Coastal Plain Dry and Dry-Mesic Oak Forest	60	460	218631	Closed canopy Late-development Atlantic Coastal Plain Dry and Dry-Mesic Oak Forest
218821	Closed canopy Mid-development Atlantic Coastal Plain Mesic Hardwood and Mixed Forest	15	79	218831	Closed canopy Late-development Atlantic Coastal Plain Mesic Hardwood and Mixed Forest
218831	Closed canopy Late-development Atlantic Coastal Plain Mesic Hardwood and Mixed Forest	80	999	218831	Closed canopy Late-development Atlantic Coastal Plain Mesic Hardwood and Mixed Forest
219032	Closed canopy Late-development Atlantic Coastal Plain Clay-Based Carolina Bay Forested Wetland	11	999	219032	Closed canopy Late-development Atlantic Coastal Plain Clay-Based Carolina Bay Forested Wetland
219121	Closed canopy Mid-development Atlantic Coastal Plain Southern Wet Pine Savanna and Flatwoods	15	60	219131	Closed canopy Late-development Atlantic Coastal Plain Southern Wet Pine Savanna and Flatwoods
219131	Closed canopy Late-development Atlantic Coastal Plain Southern Wet Pine Savanna and Flatwoods	61	999	219131	Closed canopy Late-development Atlantic Coastal Plain Southern Wet Pine Savanna and Flatwoods
219221	Closed canopy Mid-development Atlantic Coastal Plain Fall-line Sandhills Longleaf Pine Woodland - Scrub/Shrub Understory Modifier	15	74	219231	Closed canopy Late-development Atlantic Coastal Plain Fall-line Sandhills Longleaf Pine Woodland - Scrub/Shrub Understory Modifier
219231	Closed canopy Late-development Atlantic Coastal Plain Fall-line Sandhills Longleaf Pine Woodland - Scrub/Shrub Understory Modifier	75	999	219231	Closed canopy Late-development Atlantic Coastal Plain Fall-line Sandhills Longleaf Pine Woodland - Scrub/Shrub Understory Modifier
219321	Closed canopy Mid-development Atlantic Coastal Plain Upland Longleaf Pine Woodland	15	74	219331	Closed canopy Late-development Atlantic Coastal Plain Upland Longleaf Pine Woodland
219331	Closed canopy Late-development Atlantic Coastal Plain Upland Longleaf Pine Woodland	75	999	219331	Closed canopy Late-development Atlantic Coastal Plain Upland Longleaf Pine Woodland
219421	Closed canopy Mid-development Southern Coastal Plain Hydric Hammock	11	30	219431	Closed canopy Late-development Southern Coastal Plain Hydric Hammock
219431	Closed canopy Late-development Southern Coastal Plain Hydric Hammock	31	999	219431	Closed canopy Late-development Southern Coastal Plain Hydric Hammock
220121	Closed canopy Mid-development Evergreen Plantations or Managed Pine (can include dense successional regrowth)	22	40	220131	Closed canopy Late-development Evergreen Plantations or Managed Pine (can include dense successional regrowth)
220131	Closed canopy Late-development Evergreen Plantations or Managed Pine (can include dense successional regrowth)	41	9999	220131	Closed canopy Late-development Evergreen Plantations or Managed Pine (can include dense successional regrowth)
220421	Closed canopy Mid-development Public Evergreen Plantations or Managed Pine (can include dense successional regrowth)	22	40	220431	Closed canopy Late-development Public Evergreen Plantations or Managed Pine (can include dense successional regrowth)
220431	Closed canopy Late-development Public Evergreen Plantations or Managed Pine (can include dense successional regrowth)	41	9999	220431	Closed canopy Late-development Public Evergreen Plantations or Managed Pine (can include dense successional regrowth)
221932	Closed canopy Late-development Atlantic Coastal Plain Large Natural Lakeshore	11	999	221932	Closed canopy Late-development Atlantic Coastal Plain Large Natural Lakeshore
222821	Closed canopy Mid-development Floridian Highlands Freshwater Marsh	2	10	222822	Closed canopy Mid-development Floridian Highlands Freshwater Marsh
222822	Closed canopy Mid-development Floridian Highlands Freshwater Marsh	11	20	222831	Closed canopy Late-development Floridian Highlands Freshwater Marsh
222831	Closed canopy Late-development Floridian Highlands Freshwater Marsh	21	40	222832	Closed canopy Late-development Floridian Highlands Freshwater Marsh
222832	Closed canopy Late-development Floridian Highlands Freshwater Marsh	41	419	222832	Closed canopy Late-development Floridian Highlands Freshwater Marsh
223121	Closed canopy Mid-development Southern Coastal Plain Herbaceous Seepage Bog	11	30	223131	Closed canopy Late-development Southern Coastal Plain Herbaceous Seepage Bog
223131	Closed canopy Late-development Southern Coastal Plain Herbaceous Seepage Bog	31	999	223131	Closed canopy Late-development Southern Coastal Plain Herbaceous Seepage Bog
223321	Closed canopy Mid-development East Gulf Coastal Plain Treeless Savanna and Wet Prairie	15	74	223331	Closed canopy Late-development East Gulf Coastal Plain Treeless Savanna and Wet Prairie
223331	Closed canopy Late-development East Gulf Coastal Plain Treeless Savanna and Wet Prairie	75	999	223331	Closed canopy Late-development East Gulf Coastal Plain Treeless Savanna and Wet Prairie
225021	Closed canopy Mid-development East Gulf Coastal Plain Tidal Wooded Swamp	11	30	225031	Closed canopy Late-development East Gulf Coastal Plain Tidal Wooded Swamp
225031	Closed canopy Late-development East Gulf Coastal Plain Tidal Wooded Swamp	31	999	225031	Closed canopy Late-development East Gulf Coastal Plain Tidal Wooded Swamp
236921	Closed canopy Mid-development Southern Coastal Plain Nonriverine Swamp and Wet Hardwood Forest - Taxodium Modifier	8	70	236931	Closed canopy Late-development Southern Coastal Plain Nonriverine Swamp and Wet Hardwood Forest - Taxodium Modifier
236922	Closed canopy Mid-development Southern Coastal Plain Nonriverine Swamp and Wet Hardwood Forest - Taxodium Modifier	8	70	236932	Closed canopy Late-development Southern Coastal Plain Nonriverine Swamp and Wet Hardwood Forest - Taxodium Modifier
236931	Closed canopy Late-development Southern Coastal Plain Nonriverine Swamp and Wet Hardwood Forest - Taxodium Modifier	71	500	236931	Closed canopy Late-development Southern Coastal Plain Nonriverine Swamp and Wet Hardwood Forest - Taxodium Modifier
236932	Closed canopy Late-development Southern Coastal Plain Nonriverine Swamp and Wet Hardwood Forest - Taxodium Modifier	71	350	236932	Closed canopy Late-development Southern Coastal Plain Nonriverine Swamp and Wet Hardwood Forest - Taxodium Modifier
237021	Closed canopy Mid-development Southern Coastal Plain Nonriverine Basin Swamp - Okefenokee Bay/Gum Modifier	11	30	237031	Closed canopy Late-development Southern Coastal Plain Nonriverine Basin Swamp - Okefenokee Bay/Gum Modifier
237031	Closed canopy Late-development Southern Coastal Plain Nonriverine Basin Swamp - Okefenokee Bay/Gum Modifier	31	999	237031	Closed canopy Late-development Southern Coastal Plain Nonriverine Basin Swamp - Okefenokee Bay/Gum Modifier
237121	Closed canopy Mid-development Southern Coastal Plain Nonriverine Basin Swamp - Okefenokee Pine Modifier	11	30	237131	Closed canopy Late-development Southern Coastal Plain Nonriverine Basin Swamp - Okefenokee Pine Modifier

From State Class ID	From StateClass Name	Initial Age	End Age	To State Class ID	To StateClass Name
237131	Closed canopy Late-development Southern Coastal Plain Nonriverine Basin Swamp - Okefenokee Pine Modifier	31	999	237131	Closed canopy Late-development Southern Coastal Plain Nonriverine Basin Swamp - Okefenokee Pine Modifier
237721	Closed canopy Mid-development Southern Coastal Plain Nonriverine Basin Swamp - Okefenokee Nuphar Modifier	11	30	237731	Closed canopy Late-development Southern Coastal Plain Nonriverine Basin Swamp - Okefenokee Nuphar Modifier
237731	Closed canopy Late-development Southern Coastal Plain Nonriverine Basin Swamp - Okefenokee Nuphar Modifier	31	999	237731	Closed canopy Late-development Southern Coastal Plain Nonriverine Basin Swamp - Okefenokee Nuphar Modifier
237821	Closed canopy Mid-development Southern Coastal Plain Nonriverine Basin Swamp - Okefenokee Clethra Modifier	11	30	237831	Closed canopy Late-development Southern Coastal Plain Nonriverine Basin Swamp - Okefenokee Clethra Modifier
237831	Closed canopy Late-development Southern Coastal Plain Nonriverine Basin Swamp - Okefenokee Clethra Modifier	31	999	237831	Closed canopy Late-development Southern Coastal Plain Nonriverine Basin Swamp - Okefenokee Clethra Modifier
305721	Open canopy Mid-development Southern Coastal Plain Dry Upland Hardwood Forest	15	59	305731	Open canopy Late-development Southern Coastal Plain Dry Upland Hardwood Forest
305731	Open canopy Late-development Southern Coastal Plain Dry Upland Hardwood Forest	60	460	305731	Open canopy Late-development Southern Coastal Plain Dry Upland Hardwood Forest
306621	Open canopy Mid-development Southern Piedmont Dry Oak-(Pine) Forest - Hardwood Modifier	16	75	306631	Open canopy Late-development Southern Piedmont Dry Oak-(Pine) Forest - Hardwood Modifier
306631	Open canopy Late-development Southern Piedmont Dry Oak-(Pine) Forest - Hardwood Modifier	76	999	306631	Open canopy Late-development Southern Piedmont Dry Oak-(Pine) Forest - Hardwood Modifier
307621	Open canopy Mid-development Florida Longleaf Pine Sandhill- Open Understory	16	75	307631	Open canopy Late-development Florida Longleaf Pine Sandhill- Open Understory
307631	Open canopy Late-development Florida Longleaf Pine Sandhill- Open Understory	76	999	307631	Open canopy Late-development Florida Longleaf Pine Sandhill- Open Understory
307721	Open canopy Mid-development Florida Longleaf Pine Sandhill - Scrub/Shrub Understory	16	75	307731	Open canopy Late-development Florida Longleaf Pine Sandhill - Scrub/Shrub Understory
307731	Open canopy Late-development Florida Longleaf Pine Sandhill - Scrub/Shrub Understory	76	999	307731	Open canopy Late-development Florida Longleaf Pine Sandhill - Scrub/Shrub Understory
307921	Open canopy Mid-development EGCP Maritime Forest	16	60	307931	Open canopy Late-development EGCP Maritime Forest
307931	Open canopy Late-development EGCP Maritime Forest	61	999	307931	Open canopy Late-development EGCP Maritime Forest
309021	Open canopy Mid-development Atlantic Coastal Plain Fall-Line Sandhills Longleaf Pine Woodland - Loblolly Modifier	15	74	309031	Open canopy Late-development Atlantic Coastal Plain Fall-Line Sandhills Longleaf Pine Woodland - Loblolly Modifier
309031	Open canopy Late-development Atlantic Coastal Plain Fall-Line Sandhills Longleaf Pine Woodland - Loblolly Modifier	75	999	309031	Open canopy Late-development Atlantic Coastal Plain Fall-Line Sandhills Longleaf Pine Woodland - Loblolly Modifier
309121	Open canopy Mid-development Atlantic Coastal Plain Fall-line Sandhills Longleaf Pine Woodland - Open Understory Modifier	15	74	309131	Open canopy Late-development Atlantic Coastal Plain Fall-line Sandhills Longleaf Pine Woodland - Open Understory Modifier
309131	Open canopy Late-development Atlantic Coastal Plain Fall-line Sandhills Longleaf Pine Woodland - Open Understory Modifier	75	999	309131	Open canopy Late-development Atlantic Coastal Plain Fall-line Sandhills Longleaf Pine Woodland - Open Understory Modifier
309521	Open canopy Mid-development East Gulf Coastal Plain Interior Upland Longleaf Pine Woodland - Open Understory Modifier	13	50	309531	Open canopy Late-development East Gulf Coastal Plain Interior Upland Longleaf Pine Woodland - Open Understory Modifier
309531	Open canopy Late-development East Gulf Coastal Plain Interior Upland Longleaf Pine Woodland - Open Understory Modifier	51	999	309531	Open canopy Late-development East Gulf Coastal Plain Interior Upland Longleaf Pine Woodland - Open Understory Modifier
309621	Open canopy Mid-development East Gulf Coastal Plain Interior Upland Longleaf Pine Woodland - Scrub/Shrub	13	50	309631	Open canopy Late-development East Gulf Coastal Plain Interior Upland Longleaf Pine Woodland - Scrub/Shrub
309631	Open canopy Late-development East Gulf Coastal Plain Interior Upland Longleaf Pine Woodland - Scrub/Shrub	51	999	309631	Open canopy Late-development East Gulf Coastal Plain Interior Upland Longleaf Pine Woodland - Scrub/Shrub
309921	Open canopy Mid-development Southern Coastal Plain Oak Dome and Hammock	15	59	309931	Open canopy Late-development Southern Coastal Plain Oak Dome and Hammock
309931	Open canopy Late-development Southern Coastal Plain Oak Dome and Hammock	60	460	309931	Open canopy Late-development Southern Coastal Plain Oak Dome and Hammock
310821	Open canopy Mid-development Southern Piedmont Dry Oak-(Pine) Forest - Mixed Modifier	16	75	310831	Open canopy Late-development Southern Piedmont Dry Oak-(Pine) Forest - Mixed Modifier
310831	Open canopy Late-development Southern Piedmont Dry Oak-(Pine) Forest - Mixed Modifier	76	999	310831	Open canopy Late-development Southern Piedmont Dry Oak-(Pine) Forest - Mixed Modifier
312421	Open canopy Mid-development Florida Peninsula Inland Scrub	6	44	312431	Open canopy Late-development Florida Peninsula Inland Scrub
312431	Open canopy Late-development Florida Peninsula Inland Scrub	45	999	312431	Open canopy Late-development Florida Peninsula Inland Scrub
314221	Open canopy Mid-development East Gulf Coastal Plain Near-Coast Pine Flatwoods - Scrub/Shrub	15	60	314231	Open canopy Late-development East Gulf Coastal Plain Near-Coast Pine Flatwoods - Scrub/Shrub
314231	Open canopy Late-development East Gulf Coastal Plain Near-Coast Pine Flatwoods - Scrub/Shrub	61	999	314231	Open canopy Late-development East Gulf Coastal Plain Near-Coast Pine Flatwoods - Scrub/Shrub
314321	Open canopy Mid-development Central Florida Pine Flatwoods	15	75	314331	Open canopy Late-development Central Florida Pine Flatwoods
314331	Open canopy Late-development Central Florida Pine Flatwoods	76	999	314331	Open canopy Late-development Central Florida Pine Flatwoods
314421	Open canopy Mid-development Atlantic Coastal Plain Brownwater Stream Floodplain Forest	20	69	314431	Open canopy Late-development Atlantic Coastal Plain Brownwater Stream Floodplain Forest
314431	Open canopy Late-development Atlantic Coastal Plain Brownwater Stream Floodplain Forest	70	999	314431	Open canopy Late-development Atlantic Coastal Plain Brownwater Stream Floodplain Forest

From State Class ID	From StateClass Name	Initial Age	End Age	To State Class ID	To StateClass Name
314621	Open canopy Mid-development East Gulf Coastal Plain Small Stream and River Floodplain Forest	20	69	314631	Open canopy Late-development East Gulf Coastal Plain Small Stream and River Floodplain Forest
314631	Open canopy Late-development East Gulf Coastal Plain Small Stream and River Floodplain Forest	70	999	314631	Open canopy Late-development East Gulf Coastal Plain Small Stream and River Floodplain Forest
314731	Open canopy Late-development Southern Coastal Plain Blackwater River Floodplain Forest	81	999	314731	Open canopy Late-development Southern Coastal Plain Blackwater River Floodplain Forest
314831	Open canopy Late-development East Gulf Coastal Plain Large River Floodplain Forest - Forest Modifier	81	999	314831	Open canopy Late-development East Gulf Coastal Plain Large River Floodplain Forest - Forest Modifier
315431	Open canopy Late-development Atlantic Coastal Plain Small Brownwater River Floodplain Forest	81	999	315431	Open canopy Late-development Atlantic Coastal Plain Small Brownwater River Floodplain Forest
315521	Open canopy Mid-development East Gulf Coastal Plain Near-Coast Pine Flatwoods - Open	15	60	315531	Open canopy Late-development East Gulf Coastal Plain Near-Coast Pine Flatwoods - Open
315531	Open canopy Late-development East Gulf Coastal Plain Near-Coast Pine Flatwoods - Open	61	999	315531	Open canopy Late-development East Gulf Coastal Plain Near-Coast Pine Flatwoods - Open
315621	Open canopy Mid-development East Gulf Coastal Plain Near-Coast Pine Flatwoods - Offsite Hardwood	15	60	315631	Open canopy Late-development East Gulf Coastal Plain Near-Coast Pine Flatwoods - Offsite Hardwood
315631	Open canopy Late-development East Gulf Coastal Plain Near-Coast Pine Flatwoods - Offsite Hardwood	61	999	315631	Open canopy Late-development East Gulf Coastal Plain Near-Coast Pine Flatwoods - Offsite Hardwood
315731	Open canopy Late-development Southern and Central Appalachian Oak Forest	70	999	315731	Open canopy Late-development Southern and Central Appalachian Oak Forest
315821	Open canopy Mid-development Atlantic Coastal Plain Southern Maritime Forest	16	60	315831	Open canopy Late-development Atlantic Coastal Plain Southern Maritime Forest
315821	Open canopy Mid-development Atlantic Coastal Plain Southern Maritime Forest	21	100	315831	Open canopy Late-development Atlantic Coastal Plain Southern Maritime Forest
315831	Open canopy Late-development Atlantic Coastal Plain Southern Maritime Forest	61	999	315831	Open canopy Late-development Atlantic Coastal Plain Southern Maritime Forest
315831	Open canopy Late-development Atlantic Coastal Plain Southern Maritime Forest	101	999	315831	Open canopy Late-development Atlantic Coastal Plain Southern Maritime Forest
315911	Open canopy Early-development Atlantic Coastal Plain Southern Dune and Maritime Grassland	0	9	315922	Open canopy Mid-development Atlantic Coastal Plain Southern Dune and Maritime Grassland
315921	Open canopy Mid-development Atlantic Coastal Plain Southern Dune and Maritime Grassland	10	20	215932	Closed canopy Late-development Atlantic Coastal Plain Southern Dune and Maritime Grassland
315922	Open canopy Mid-development Atlantic Coastal Plain Southern Dune and Maritime Grassland	10	30	215931	Closed canopy Late-development Atlantic Coastal Plain Southern Dune and Maritime Grassland
316011	Open canopy Early-development Atlantic Coastal Plain Northern Dune and Maritime Grassland	0	9	316022	Open canopy Mid-development Atlantic Coastal Plain Northern Dune and Maritime Grassland
316021	Open canopy Mid-development Atlantic Coastal Plain Northern Dune and Maritime Grassland	10	20	216032	Closed canopy Late-development Atlantic Coastal Plain Northern Dune and Maritime Grassland
316022	Open canopy Mid-development Atlantic Coastal Plain Northern Dune and Maritime Grassland	10	30	216031	Closed canopy Late-development Atlantic Coastal Plain Northern Dune and Maritime Grassland
316131	Open canopy Late-development Atlantic Coastal Plain Northern Maritime Forest	60	999	316131	Open canopy Late-development Atlantic Coastal Plain Northern Maritime Forest
316221	Open canopy Mid-development Atlantic Coastal Plain Central Maritime Forest	21	100	316231	Open canopy Late-development Atlantic Coastal Plain Central Maritime Forest
316231	Open canopy Late-development Atlantic Coastal Plain Central Maritime Forest	101	999	316231	Open canopy Late-development Atlantic Coastal Plain Central Maritime Forest
316311	Open canopy Early-development Atlantic Coastal Plain Northern Fresh and Oligohaline Tidal Marsh	0	5	316321	Open canopy Mid-development Atlantic Coastal Plain Northern Fresh and Oligohaline Tidal Marsh
316312	Open canopy Early-development Atlantic Coastal Plain Northern Fresh and Oligohaline Tidal Marsh	1	150	316312	Open canopy Early-development Atlantic Coastal Plain Northern Fresh and Oligohaline Tidal Marsh
316321	Open canopy Mid-development Atlantic Coastal Plain Northern Fresh and Oligohaline Tidal Marsh	6	18	316322	Open canopy Mid-development Atlantic Coastal Plain Northern Fresh and Oligohaline Tidal Marsh
316322	Open canopy Mid-development Atlantic Coastal Plain Northern Fresh and Oligohaline Tidal Marsh	19	50	316322	Open canopy Mid-development Atlantic Coastal Plain Northern Fresh and Oligohaline Tidal Marsh
316421	Open canopy Mid-development Southern Coastal Plain Nonriverine Cypress Dome	16	60	316431	Open canopy Late-development Southern Coastal Plain Nonriverine Cypress Dome
316431	Open canopy Late-development Southern Coastal Plain Nonriverine Cypress Dome	61	999	316431	Open canopy Late-development Southern Coastal Plain Nonriverine Cypress Dome
316521	Open canopy Mid-development Southern Piedmont Large Floodplain Forest - Forest Modifier	20	69	316531	Open canopy Late-development Southern Piedmont Large Floodplain Forest - Forest Modifier
316531	Open canopy Late-development Southern Piedmont Large Floodplain Forest - Forest Modifier	70	500	316531	Open canopy Late-development Southern Piedmont Large Floodplain Forest - Forest Modifier
316721	Open canopy Mid-development East Gulf Coastal Plain Interior Upland LL Pine Woodland - Loblolly Modifier	13	50	316731	Open canopy Late-development East Gulf Coastal Plain Interior Upland LL Pine Woodland - Loblolly Modifier
316731	Open canopy Late-development East Gulf Coastal Plain Interior Upland LL Pine Woodland - Loblolly Modifier	51	999	316731	Open canopy Late-development East Gulf Coastal Plain Interior Upland LL Pine Woodland - Loblolly Modifier
316821	Open canopy Mid-development Southern Piedmont Small Floodplain and Riparian Forest	20	69	316831	Open canopy Late-development Southern Piedmont Small Floodplain and Riparian Forest
316831	Open canopy Late-development Southern Piedmont Small Floodplain and Riparian Forest	70	999	316831	Open canopy Late-development Southern Piedmont Small Floodplain and Riparian Forest
316921	Open canopy Mid-development Southern Piedmont Mesic Forest	16	75	316931	Open canopy Late-development Southern Piedmont Mesic Forest

From State Class ID	From StateClass Name	Initial Age	End Age	To State Class ID	To StateClass Name
316931	Open canopy Late-development Southern Piedmont Mesic Forest	76	999	316931	Open canopy Late-development Southern Piedmont Mesic Forest
317021	Open canopy Mid-development Southern Piedmont Dry Oak-(Pine) Forest - Loblolly Pine Modifier	16	75	317031	Open canopy Late-development Southern Piedmont Dry Oak-(Pine) Forest - Loblolly Pine Modifier
317031	Open canopy Late-development Southern Piedmont Dry Oak-(Pine) Forest - Loblolly Pine Modifier	76	999	317031	Open canopy Late-development Southern Piedmont Dry Oak-(Pine) Forest - Loblolly Pine Modifier
317121	Open canopy Mid-development Atlantic Coastal Plain Xeric River Dune	6	20	317131	Open canopy Late-development Atlantic Coastal Plain Xeric River Dune
317131	Open canopy Late-development Atlantic Coastal Plain Xeric River Dune	21	999	317131	Open canopy Late-development Atlantic Coastal Plain Xeric River Dune
317221	Open canopy Mid-development East Gulf Coastal Plain Interior Upland Longleaf Pine Woodland - Offsite Hardwood Modifier	13	50	317231	Open canopy Late-development East Gulf Coastal Plain Interior Upland Longleaf Pine Woodland - Offsite Hardwood Modifier
317231	Open canopy Late-development East Gulf Coastal Plain Interior Upland Longleaf Pine Woodland - Offsite Hardwood Modifier	51	999	317231	Open canopy Late-development East Gulf Coastal Plain Interior Upland Longleaf Pine Woodland - Offsite Hardwood Modifier
317321	Open canopy Mid-development Atlantic Coastal Plain Fall-line Sandhills Longleaf Pine Woodland - Offsite Hardwood Modifier	15	74	317331	Open canopy Late-development Atlantic Coastal Plain Fall-line Sandhills Longleaf Pine Woodland - Offsite Hardwood Modifier
317331	Open canopy Late-development Atlantic Coastal Plain Fall-line Sandhills Longleaf Pine Woodland - Offsite Hardwood Modifier	75	999	317331	Open canopy Late-development Atlantic Coastal Plain Fall-line Sandhills Longleaf Pine Woodland - Offsite Hardwood Modifier
317921	Open canopy Mid-development Atlantic Coastal Plain Peatland Pocosin	5	40	317931	Open canopy Late-development Atlantic Coastal Plain Peatland Pocosin
317931	Open canopy Late-development Atlantic Coastal Plain Peatland Pocosin	41	300	317931	Open canopy Late-development Atlantic Coastal Plain Peatland Pocosin
318021	Open canopy Mid-development Southern Coastal Plain Seepage Swamp and Baygall	16	50	318031	Open canopy Late-development Southern Coastal Plain Seepage Swamp and Baygall
318031	Open canopy Late-development Southern Coastal Plain Seepage Swamp and Baygall	51	999	318031	Open canopy Late-development Southern Coastal Plain Seepage Swamp and Baygall
318121	Open canopy Mid-development Central Atlantic Coastal Plain Wet Longleaf Pine Savanna and Flatwoods	15	74	318131	Open canopy Late-development Central Atlantic Coastal Plain Wet Longleaf Pine Savanna and Flatwoods
318131	Open canopy Late-development Central Atlantic Coastal Plain Wet Longleaf Pine Savanna and Flatwoods	75	999	318131	Open canopy Late-development Central Atlantic Coastal Plain Wet Longleaf Pine Savanna and Flatwoods
318211	Open canopy Early-development Atlantic Coastal Plain Central Salt and Brackish Tidal Marsh	0	5	318221	Open canopy Mid-development Atlantic Coastal Plain Central Salt and Brackish Tidal Marsh
318212	Open canopy Early-development Atlantic Coastal Plain Central Salt and Brackish Tidal Marsh	0	150	318212	Open canopy Early-development Atlantic Coastal Plain Central Salt and Brackish Tidal Marsh
318221	Open canopy Mid-development Atlantic Coastal Plain Central Salt and Brackish Tidal Marsh	6	18	318222	Open canopy Mid-development Atlantic Coastal Plain Central Salt and Brackish Tidal Marsh
318222	Open canopy Mid-development Atlantic Coastal Plain Central Salt and Brackish Tidal Marsh	19	50	318222	Open canopy Mid-development Atlantic Coastal Plain Central Salt and Brackish Tidal Marsh
318321	Open canopy Mid-development Atlantic Coastal Plain Blackwater Stream Floodplain Forest - Forest Modifier	20	69	318331	Open canopy Late-development Atlantic Coastal Plain Blackwater Stream Floodplain Forest - Forest Modifier
318331	Open canopy Late-development Atlantic Coastal Plain Blackwater Stream Floodplain Forest - Forest Modifier	70	999	318331	Open canopy Late-development Atlantic Coastal Plain Blackwater Stream Floodplain Forest - Forest Modifier
318421	Open canopy Mid-development Atlantic Coastal Plain Streamhead Seepage Swamp, Pocosin, and Baygall	9	34	318431	Open canopy Late-development Atlantic Coastal Plain Streamhead Seepage Swamp, Pocosin, and Baygall
318431	Open canopy Late-development Atlantic Coastal Plain Streamhead Seepage Swamp, Pocosin, and Baygall	35	999	318431	Open canopy Late-development Atlantic Coastal Plain Streamhead Seepage Swamp, Pocosin, and Baygall
318531	Open canopy Late-development Atlantic Coastal Plain Small Blackwater River Floodplain Forest	81	999	318531	Open canopy Late-development Atlantic Coastal Plain Small Blackwater River Floodplain Forest
318621	Open canopy Mid-development Atlantic Coastal Plain Dry and Dry-Mesic Oak Forest	15	59	318631	Open canopy Late-development Atlantic Coastal Plain Dry and Dry-Mesic Oak Forest
318631	Open canopy Late-development Atlantic Coastal Plain Dry and Dry-Mesic Oak Forest	60	460	318631	Open canopy Late-development Atlantic Coastal Plain Dry and Dry-Mesic Oak Forest
318821	Open canopy Mid-development Atlantic Coastal Plain Mesic Hardwood and Mixed Forest	15	79	318831	Open canopy Late-development Atlantic Coastal Plain Mesic Hardwood and Mixed Forest
318831	Open canopy Late-development Atlantic Coastal Plain Mesic Hardwood and Mixed Forest	80	999	318831	Open canopy Late-development Atlantic Coastal Plain Mesic Hardwood and Mixed Forest
319021	Open canopy Mid-development Atlantic Coastal Plain Clay-Based Carolina Bay Forested Wetland	11	999	319021	Open canopy Mid-development Atlantic Coastal Plain Clay-Based Carolina Bay Forested Wetland
319121	Open canopy Mid-development Atlantic Coastal Plain Southern Wet Pine Savanna and Flatwoods	15	60	319131	Open canopy Late-development Atlantic Coastal Plain Southern Wet Pine Savanna and Flatwoods
319131	Open canopy Late-development Atlantic Coastal Plain Southern Wet Pine Savanna and Flatwoods	61	999	319131	Open canopy Late-development Atlantic Coastal Plain Southern Wet Pine Savanna and Flatwoods
319221	Open canopy Mid-development Atlantic Coastal Plain Fall-line Sandhills Longleaf Pine Woodland - Scrub/Shrub Understory Modifier	15	74	319231	Open canopy Late-development Atlantic Coastal Plain Fall-line Sandhills Longleaf Pine Woodland - Scrub/Shrub Understory Modifier
319231	Open canopy Late-development Atlantic Coastal Plain Fall-line Sandhills Longleaf Pine Woodland - Scrub/Shrub Understory Modifier	75	999	319231	Open canopy Late-development Atlantic Coastal Plain Fall-line Sandhills Longleaf Pine Woodland - Scrub/Shrub Understory Modifier
319321	Open canopy Mid-development Atlantic Coastal Plain Upland Longleaf Pine Woodland	15	74	319331	Open canopy Late-development Atlantic Coastal Plain Upland Longleaf Pine Woodland
319331	Open canopy Late-development Atlantic Coastal Plain Upland Longleaf Pine Woodland	75	999	319331	Open canopy Late-development Atlantic Coastal Plain Upland Longleaf Pine Woodland
320121	Open canopy Mid-development Evergreen Plantations or Managed Pine (can include dense successional regrowth)	22	40	320131	Open canopy Late-development Evergreen Plantations or Managed Pine (can include dense successional regrowth)

From State Class ID	From StateClass Name	Initial Age	End Age	To State Class ID	To StateClass Name
320131	Open canopy Late-development Evergreen Plantations or Managed Pine (can include dense successional regrowth)	41	9999	220131	Closed canopy Late-development Evergreen Plantations or Managed Pine (can include dense successional regrowth)
320211	Open canopy Early-development Clearcut - Grassland/Herbaceous	0	3	320221	Open canopy Mid-development Clearcut - Grassland/Herbaceous
320221	Open canopy Mid-development Clearcut - Grassland/Herbaceous	3	6	320231	Open canopy Late-development Clearcut - Grassland/Herbaceous
320231	Open canopy Late-development Clearcut - Grassland/Herbaceous	7	15	320311	Open canopy Early-development Successional Shrub/Scrub (Clear Cut)
320311	Open canopy Early-development Successional Shrub/Scrub (Clear Cut)	0	3	320321	Open canopy Mid-development Successional Shrub/Scrub (Clear Cut)
320321	Open canopy Mid-development Successional Shrub/Scrub (Clear Cut)	4	10	320331	Open canopy Late-development Successional Shrub/Scrub (Clear Cut)
320331	Open canopy Late-development Successional Shrub/Scrub (Clear Cut)	11	12	120111	Post replacement Early-development Evergreen Plantations or Managed Pine (can include dense successional regrowth)
320421	Open canopy Mid-development Public Evergreen Plantations or Managed Pine (can include dense successional regrowth)	22	40	320431	Open canopy Late-development Public Evergreen Plantations or Managed Pine (can include dense successional regrowth)
320431	Open canopy Late-development Public Evergreen Plantations or Managed Pine (can include dense successional regrowth)	41	9999	220431	Closed canopy Late-development Public Evergreen Plantations or Managed Pine (can include dense successional regrowth)
320511	Open canopy Early-development Public Clearcut - Grassland/Herbaceous	0	3	320521	Open canopy Mid-development Public Clearcut - Grassland/Herbaceous
320521	Open canopy Mid-development Public Clearcut - Grassland/Herbaceous	3	6	320531	Open canopy Late-development Public Clearcut - Grassland/Herbaceous
320531	Open canopy Late-development Public Clearcut - Grassland/Herbaceous	7	15	320611	Open canopy Early-development Public Successional Shrub/Scrub (Clear Cut)
320611	Open canopy Early-development Public Successional Shrub/Scrub (Clear Cut)	0	3	320621	Open canopy Mid-development Public Successional Shrub/Scrub (Clear Cut)
320621	Open canopy Mid-development Public Successional Shrub/Scrub (Clear Cut)	4	10	320631	Open canopy Late-development Public Successional Shrub/Scrub (Clear Cut)
320631	Open canopy Late-development Public Successional Shrub/Scrub (Clear Cut)	11	12	120411	Post replacement Early-development Public Evergreen Plantations or Managed Pine (can include dense successional regrowth)
321311	Open canopy Early-development Atlantic Coastal Plain Central Fresh-Oligohaline Tidal Marsh	0	5	321321	Open canopy Mid-development Atlantic Coastal Plain Central Fresh-Oligohaline Tidal Marsh
321312	Open canopy Early-development Atlantic Coastal Plain Central Fresh-Oligohaline Tidal Marsh	1	150	321312	Open canopy Early-development Atlantic Coastal Plain Central Fresh-Oligohaline Tidal Marsh
321321	Open canopy Mid-development Atlantic Coastal Plain Central Fresh-Oligohaline Tidal Marsh	6	18	321322	Open canopy Mid-development Atlantic Coastal Plain Central Fresh-Oligohaline Tidal Marsh
321322	Open canopy Mid-development Atlantic Coastal Plain Central Fresh-Oligohaline Tidal Marsh	19	50	321322	Open canopy Mid-development Atlantic Coastal Plain Central Fresh-Oligohaline Tidal Marsh
321411	Open canopy Early-development Atlantic Coastal Plain Embayed Region Tidal Freshwater Marsh	0	5	321421	Open canopy Mid-development Atlantic Coastal Plain Embayed Region Tidal Freshwater Marsh
321421	Open canopy Mid-development Atlantic Coastal Plain Embayed Region Tidal Freshwater Marsh	6	18	321422	Open canopy Mid-development Atlantic Coastal Plain Embayed Region Tidal Freshwater Marsh
321422	Open canopy Mid-development Atlantic Coastal Plain Embayed Region Tidal Freshwater Marsh	19	50	321422	Open canopy Mid-development Atlantic Coastal Plain Embayed Region Tidal Freshwater Marsh
321921	Open canopy Mid-development Atlantic Coastal Plain Large Natural Lakeshore	11	999	321921	Open canopy Mid-development Atlantic Coastal Plain Large Natural Lakeshore
323321	Open canopy Mid-development East Gulf Coastal Plain Treeless Savanna and Wet Prairie	15	74	323331	Open canopy Late-development East Gulf Coastal Plain Treeless Savanna and Wet Prairie
323331	Open canopy Late-development East Gulf Coastal Plain Treeless Savanna and Wet Prairie	75	999	323331	Open canopy Late-development East Gulf Coastal Plain Treeless Savanna and Wet Prairie
324611	Open canopy Early-development Atlantic Coastal Plain Embayed Region Tidal Salt and Brackish Marsh	0	5	324621	Open canopy Mid-development Atlantic Coastal Plain Embayed Region Tidal Salt and Brackish Marsh
324621	Open canopy Mid-development Atlantic Coastal Plain Embayed Region Tidal Salt and Brackish Marsh	6	18	324622	Open canopy Mid-development Atlantic Coastal Plain Embayed Region Tidal Salt and Brackish Marsh
324622	Open canopy Mid-development Atlantic Coastal Plain Embayed Region Tidal Salt and Brackish Marsh	19	50	324622	Open canopy Mid-development Atlantic Coastal Plain Embayed Region Tidal Salt and Brackish Marsh
324811	Open canopy Early-development Atlantic Coastal Plain Northern Tidal Salt Marsh	0	5	324821	Open canopy Mid-development Atlantic Coastal Plain Northern Tidal Salt Marsh
324821	Open canopy Mid-development Atlantic Coastal Plain Northern Tidal Salt Marsh	6	18	324822	Open canopy Mid-development Atlantic Coastal Plain Northern Tidal Salt Marsh
324822	Open canopy Mid-development Atlantic Coastal Plain Northern Tidal Salt Marsh	19	50	324822	Open canopy Mid-development Atlantic Coastal Plain Northern Tidal Salt Marsh



## Appendix B. State Disturbance Transition Probabilities

From State Class ID	From StateClass Name	Disturbance	Probability	To State Class ID	To StateClass Name
105711	Post replacement Early-development Southern Coastal Plain Dry Upland Hardwood Forest	SurfaceFire	0.1400	105711	Post replacement Early-development Southern Coastal Plain Dry Upland Hardwood Forest
105711	Post replacement Early-development Southern Coastal Plain Dry Upland Hardwood Forest	ReplacementFire	0.0100	105711	Post replacement Early-development Southern Coastal Plain Dry Upland Hardwood Forest
105711	Post replacement Early-development Southern Coastal Plain Dry Upland Hardwood Forest	AltSuccession	1.0000	205721	Closed canopy Mid-development Southern Coastal Plain Dry Upland Hardwood Forest
106611	Post replacement Early-development Southern Piedmont Dry Oak-(Pine) Forest - Hardwood Modifier	SurfaceFire	0.0800	106611	Post replacement Early-development Southern Piedmont Dry Oak-(Pine) Forest - Hardwood Modifier
106611	Post replacement Early-development Southern Piedmont Dry Oak-(Pine) Forest - Hardwood Modifier	ReplacementFire	0.0050	106611	Post replacement Early-development Southern Piedmont Dry Oak-(Pine) Forest - Hardwood Modifier
106611	Post replacement Early-development Southern Piedmont Dry Oak-(Pine) Forest - Hardwood Modifier	AltSuccession	1.0000	206621	Closed canopy Mid-development Southern Piedmont Dry Oak-(Pine) Forest - Hardwood Modifier
107611	Post replacement Early-development Florida Longleaf Pine Sandhill- Open Understory	SurfaceFire	0.4000	107611	Post replacement Early-development Florida Longleaf Pine Sandhill- Open Understory
107611	Post replacement Early-development Florida Longleaf Pine Sandhill- Open Understory	ReplacementFire	0.0100	107611	Post replacement Early-development Florida Longleaf Pine Sandhill- Open Understory
107611	Post replacement Early-development Florida Longleaf Pine Sandhill- Open Understory	AltSuccession	1.0000	207621	Closed canopy Mid-development Florida Longleaf Pine Sandhill- Open Understory
107711	Post replacement Early-development Florida Longleaf Pine Sandhill - Scrub/Shrub Understory	SurfaceFire	0.4000	107711	Post replacement Early-development Florida Longleaf Pine Sandhill - Scrub/Shrub Understory
107711	Post replacement Early-development Florida Longleaf Pine Sandhill - Scrub/Shrub Understory	ReplacementFire	0.0100	107711	Post replacement Early-development Florida Longleaf Pine Sandhill - Scrub/Shrub Understory
107711	Post replacement Early-development Florida Longleaf Pine Sandhill - Scrub/Shrub Understory	AltSuccession	1.0000	207721	Closed canopy Mid-development Florida Longleaf Pine Sandhill - Scrub/Shrub Understory
107911	Post replacement Early-development EGCP Maritime Forest	SurfaceFire	0.2500	107911	Post replacement Early-development EGCP Maritime Forest
107911	Post replacement Early-development EGCP Maritime Forest	ReplacementFire	0.0100	107911	Post replacement Early-development EGCP Maritime Forest
107911	Post replacement Early-development EGCP Maritime Forest	Wind/Weather/Stress	0.0100	107911	Post replacement Early-development EGCP Maritime Forest
107911	Post replacement Early-development EGCP Maritime Forest	OptionalI	0.5000	207921	Closed canopy Mid-development EGCP Maritime Forest
109011	Post replacement Early-development Atlantic Coastal Plain Fall-Line Sandhills Longleaf Pine Woodland - Loblolly Modifier	SurfaceFire	0.2500	109011	Post replacement Early-development Atlantic Coastal Plain Fall-Line Sandhills Longleaf Pine Woodland - Loblolly Modifier
109011	Post replacement Early-development Atlantic Coastal Plain Fall-Line Sandhills Longleaf Pine Woodland - Loblolly Modifier	ReplacementFire	0.0100	109011	Post replacement Early-development Atlantic Coastal Plain Fall-Line Sandhills Longleaf Pine Woodland - Loblolly Modifier
109011	Post replacement Early-development Atlantic Coastal Plain Fall-Line Sandhills Longleaf Pine Woodland - Loblolly Modifier	AltSuccession	1.0000	209021	Closed canopy Mid-development Atlantic Coastal Plain Fall-Line Sandhills Longleaf Pine Woodland - Loblolly Modifier
109111	Post replacement Early-development Atlantic Coastal Plain Fall-line Sandhills Longleaf Pine Woodland - Open Understory Modifier	SurfaceFire	0.2500	109111	Post replacement Early-development Atlantic Coastal Plain Fall-line Sandhills Longleaf Pine Woodland - Open Understory Modifier
109111	Post replacement Early-development Atlantic Coastal Plain Fall-line Sandhills Longleaf Pine Woodland - Open Understory Modifier	ReplacementFire	0.0100	109111	Post replacement Early-development Atlantic Coastal Plain Fall-line Sandhills Longleaf Pine Woodland - Open Understory Modifier
109111	Post replacement Early-development Atlantic Coastal Plain Fall-line Sandhills Longleaf Pine Woodland - Open Understory Modifier	AltSuccession	1.0000	209121	Closed canopy Mid-development Atlantic Coastal Plain Fall-line Sandhills Longleaf Pine Woodland - Open Understory Modifier
109511	Post replacement Early-development East Gulf Coastal Plain Interior Upland Longleaf Pine Woodland - Open Understory Modifier	SurfaceFire	0.3300	109511	Post replacement Early-development East Gulf Coastal Plain Interior Upland Longleaf Pine Woodland - Open Understory Modifier
109511	Post replacement Early-development East Gulf Coastal Plain Interior Upland Longleaf Pine Woodland - Open Understory Modifier	ReplacementFire	0.0100	109511	Post replacement Early-development East Gulf Coastal Plain Interior Upland Longleaf Pine Woodland - Open Understory Modifier
109511	Post replacement Early-development East Gulf Coastal Plain Interior Upland Longleaf Pine Woodland - Open Understory Modifier	AltSuccession	1.0000	209521	Closed canopy Mid-development East Gulf Coastal Plain Interior Upland Longleaf Pine Woodland - Open Understory Modifier
109611	Post replacement Early-development East Gulf Coastal Plain Interior Upland Longleaf Pine Woodland - Scrub/Shrub	SurfaceFire	0.3300	109611	Post replacement Early-development East Gulf Coastal Plain Interior Upland Longleaf Pine Woodland - Scrub/Shrub
109611	Post replacement Early-development East Gulf Coastal Plain Interior Upland Longleaf Pine Woodland - Scrub/Shrub	ReplacementFire	0.0100	109611	Post replacement Early-development East Gulf Coastal Plain Interior Upland Longleaf Pine Woodland - Scrub/Shrub
109611	Post replacement Early-development East Gulf Coastal Plain Interior Upland Longleaf Pine Woodland - Scrub/Shrub	AltSuccession	1.0000	209621	Closed canopy Mid-development East Gulf Coastal Plain Interior Upland Longleaf Pine Woodland - Scrub/Shrub

From State Class ID	From StateClass Name	Disturbance	Probability	To State Class ID	To StateClass Name
109911	Post replacement Early-development Southern Coastal Plain Oak Dome and Hammock	SurfaceFire	0.1400	109911	Post replacement Early-development Southern Coastal Plain Oak Dome and Hammock
109911	Post replacement Early-development Southern Coastal Plain Oak Dome and Hammock	ReplacementFire	0.0100	109911	Post replacement Early-development Southern Coastal Plain Oak Dome and Hammock
109911	Post replacement Early-development Southern Coastal Plain Oak Dome and Hammock	AltSuccession	1.0000	209921	Closed canopy Mid-development Southern Coastal Plain Oak Dome and Hammock
110811	Post replacement Early-development Southern Piedmont Dry Oak-(Pine) Forest - Mixed Modifier	SurfaceFire	0.0800	110811	Post replacement Early-development Southern Piedmont Dry Oak-(Pine) Forest - Mixed Modifier
110811	Post replacement Early-development Southern Piedmont Dry Oak-(Pine) Forest - Mixed Modifier	ReplacementFire	0.0050	110811	Post replacement Early-development Southern Piedmont Dry Oak-(Pine) Forest - Mixed Modifier
110811	Post replacement Early-development Southern Piedmont Dry Oak-(Pine) Forest - Mixed Modifier	AltSuccession	1.0000	210821	Closed canopy Mid-development Southern Piedmont Dry Oak-(Pine) Forest - Mixed Modifier
112411	Post replacement Early-development Florida Peninsula Inland Scrub	AltSuccession	0.0500	312421	Open canopy Mid-development Florida Peninsula Inland Scrub
114011	Post replacement Early-development Mississippi River Riparian Forest	SurfaceFire	0.0100	114011	Post replacement Early-development Mississippi River Riparian Forest
114011	Post replacement Early-development Mississippi River Riparian Forest	ReplacementFire	0.0330	114011	Post replacement Early-development Mississippi River Riparian Forest
114011	Post replacement Early-development Mississippi River Riparian Forest	OptionalI	0.0100	114011	Post replacement Early-development Mississippi River Riparian Forest
114121	Post replacement Mid-development East Gulf Coastal Plain Dune and Coastal Grassland	AltSuccession	0.0025	114131	Post replacement Late-development East Gulf Coastal Plain Dune and Coastal Grassland
114211	Post replacement Early-development East Gulf Coastal Plain Near-Coast Pine Flatwoods - Scrub/Shrub	SurfaceFire	0.3000	114211	Post replacement Early-development East Gulf Coastal Plain Near-Coast Pine Flatwoods - Scrub/Shrub
114211	Post replacement Early-development East Gulf Coastal Plain Near-Coast Pine Flatwoods - Scrub/Shrub	ReplacementFire	0.0200	114211	Post replacement Early-development East Gulf Coastal Plain Near-Coast Pine Flatwoods - Scrub/Shrub
114211	Post replacement Early-development East Gulf Coastal Plain Near-Coast Pine Flatwoods - Scrub/Shrub	AltSuccession	1.0000	214221	Closed canopy Mid-development East Gulf Coastal Plain Near-Coast Pine Flatwoods - Scrub/Shrub
114311	Post replacement Early-development Central Florida Pine Flatwoods	SurfaceFire	0.4000	114311	Post replacement Early-development Central Florida Pine Flatwoods
114311	Post replacement Early-development Central Florida Pine Flatwoods	ReplacementFire	0.0400	114311	Post replacement Early-development Central Florida Pine Flatwoods
114311	Post replacement Early-development Central Florida Pine Flatwoods	Wind/Weather/Stress	0.0050	114311	Post replacement Early-development Central Florida Pine Flatwoods
114311	Post replacement Early-development Central Florida Pine Flatwoods	AltSuccession	1.0000	214321	Closed canopy Mid-development Central Florida Pine Flatwoods
114411	Post replacement Early-development Atlantic Coastal Plain Brownwater Stream Floodplain Forest	SurfaceFire	0.0100	114411	Post replacement Early-development Atlantic Coastal Plain Brownwater Stream Floodplain Forest
114411	Post replacement Early-development Atlantic Coastal Plain Brownwater Stream Floodplain Forest	MixedFire	0.0070	114411	Post replacement Early-development Atlantic Coastal Plain Brownwater Stream Floodplain Forest
114411	Post replacement Early-development Atlantic Coastal Plain Brownwater Stream Floodplain Forest	Wind/Weather/Stress	0.0050	114411	Post replacement Early-development Atlantic Coastal Plain Brownwater Stream Floodplain Forest
114411	Post replacement Early-development Atlantic Coastal Plain Brownwater Stream Floodplain Forest	OptionalI	0.0400	114411	Post replacement Early-development Atlantic Coastal Plain Brownwater Stream Floodplain Forest
114611	Post replacement Early-development East Gulf Coastal Plain Small Stream and River Floodplain Forest	SurfaceFire	0.0100	114611	Post replacement Early-development East Gulf Coastal Plain Small Stream and River Floodplain Forest
114611	Post replacement Early-development East Gulf Coastal Plain Small Stream and River Floodplain Forest	MixedFire	0.0070	114611	Post replacement Early-development East Gulf Coastal Plain Small Stream and River Floodplain Forest
114611	Post replacement Early-development East Gulf Coastal Plain Small Stream and River Floodplain Forest	Wind/Weather/Stress	0.0050	114611	Post replacement Early-development East Gulf Coastal Plain Small Stream and River Floodplain Forest
114611	Post replacement Early-development East Gulf Coastal Plain Small Stream and River Floodplain Forest	OptionalI	0.0400	114611	Post replacement Early-development East Gulf Coastal Plain Small Stream and River Floodplain Forest
114711	Post replacement Early-development Southern Coastal Plain Blackwater River Floodplain Forest	SurfaceFire	0.0100	114711	Post replacement Early-development Southern Coastal Plain Blackwater River Floodplain Forest
114711	Post replacement Early-development Southern Coastal Plain Blackwater River Floodplain Forest	ReplacementFire	0.0330	114711	Post replacement Early-development Southern Coastal Plain Blackwater River Floodplain Forest
114711	Post replacement Early-development Southern Coastal Plain Blackwater River Floodplain Forest	OptionalI	0.0100	114711	Post replacement Early-development Southern Coastal Plain Blackwater River Floodplain Forest
114811	Post replacement Early-development East Gulf Coastal Plain Large River Floodplain Forest - Forest Modifier	SurfaceFire	0.0100	114811	Post replacement Early-development East Gulf Coastal Plain Large River Floodplain Forest - Forest Modifier
114811	Post replacement Early-development East Gulf Coastal Plain Large River Floodplain Forest - Forest Modifier	ReplacementFire	0.0330	114811	Post replacement Early-development East Gulf Coastal Plain Large River Floodplain Forest - Forest Modifier
114811	Post replacement Early-development East Gulf Coastal Plain Large River Floodplain Forest - Forest Modifier	OptionalI	0.0100	114811	Post replacement Early-development East Gulf Coastal Plain Large River Floodplain Forest - Forest Modifier
115211	Post replacement Early-development Atlantic Coastal Plain Nonriverine Swamp and Wet Hardwood Forest - Oak Dominated Modifier	ReplacementFire	0.0100	115211	Post replacement Early-development Atlantic Coastal Plain Nonriverine Swamp and Wet Hardwood Forest - Oak Dominated Modifier
115211	Post replacement Early-development Atlantic Coastal Plain Nonriverine Swamp and Wet Hardwood Forest - Oak Dominated Modifier	AltSuccession	0.0400	215222	Closed canopy Mid-development Atlantic Coastal Plain Nonriverine Swamp and Wet Hardwood Forest - Oak Dominated Modifier
115411	Post replacement Early-development Atlantic Coastal Plain Small Brownwater River Floodplain Forest	SurfaceFire	0.0100	115411	Post replacement Early-development Atlantic Coastal Plain Small Brownwater River Floodplain Forest



From State Class ID	From StateClass Name	Disturbance	Probability	To State Class ID	To StateClass Name
117011	Post replacement Early-development Southern Piedmont Dry Oak-(Pine) Forest - Loblolly Pine Modifier	SurfaceFire	0.0800	117011	Post replacement Early-development Southern Piedmont Dry Oak-(Pine) Forest - Loblolly Pine Modifier
117011	Post replacement Early-development Southern Piedmont Dry Oak-(Pine) Forest - Loblolly Pine Modifier	ReplacementFire	0.0050	117011	Post replacement Early-development Southern Piedmont Dry Oak-(Pine) Forest - Loblolly Pine Modifier
117011	Post replacement Early-development Southern Piedmont Dry Oak-(Pine) Forest - Loblolly Pine Modifier	AltSuccession	1.0000	217021	Closed canopy Mid-development Southern Piedmont Dry Oak-(Pine) Forest - Loblolly Pine Modifier
117211	Post replacement Early-development East Gulf Coastal Plain Interior Upland Longleaf Pine Woodland - Offsite Hardwood Modifier	SurfaceFire	0.3300	117211	Post replacement Early-development East Gulf Coastal Plain Interior Upland Longleaf Pine Woodland - Offsite Hardwood Modifier
117211	Post replacement Early-development East Gulf Coastal Plain Interior Upland Longleaf Pine Woodland - Offsite Hardwood Modifier	ReplacementFire	0.0100	117211	Post replacement Early-development East Gulf Coastal Plain Interior Upland Longleaf Pine Woodland - Offsite Hardwood Modifier
117211	Post replacement Early-development East Gulf Coastal Plain Interior Upland Longleaf Pine Woodland - Offsite Hardwood Modifier	AltSuccession	1.0000	217221	Closed canopy Mid-development East Gulf Coastal Plain Interior Upland Longleaf Pine Woodland - Offsite Hardwood Modifier
117311	Post replacement Early-development Atlantic Coastal Plain Fall-line Sandhills Longleaf Pine Woodland - Offsite Hardwood Modifier	SurfaceFire	0.2500	117311	Post replacement Early-development Atlantic Coastal Plain Fall-line Sandhills Longleaf Pine Woodland - Offsite Hardwood Modifier
117311	Post replacement Early-development Atlantic Coastal Plain Fall-line Sandhills Longleaf Pine Woodland - Offsite Hardwood Modifier	ReplacementFire	0.0100	117311	Post replacement Early-development Atlantic Coastal Plain Fall-line Sandhills Longleaf Pine Woodland - Offsite Hardwood Modifier
117311	Post replacement Early-development Atlantic Coastal Plain Fall-line Sandhills Longleaf Pine Woodland - Offsite Hardwood Modifier	AltSuccession	1.0000	217321	Closed canopy Mid-development Atlantic Coastal Plain Fall-line Sandhills Longleaf Pine Woodland - Offsite Hardwood Modifier
117811	Post replacement Early-development Atlantic Coastal Plain Nonriverine Swamp and Wet Hardwood Forest - Taxodium/Nyssa Modifier	ReplacementFire	0.0100	117811	Post replacement Early-development Atlantic Coastal Plain Nonriverine Swamp and Wet Hardwood Forest - Taxodium/Nyssa Modifier
117811	Post replacement Early-development Atlantic Coastal Plain Nonriverine Swamp and Wet Hardwood Forest - Taxodium/Nyssa Modifier	AltSuccession	0.0400	217822	Closed canopy Mid-development Atlantic Coastal Plain Nonriverine Swamp and Wet Hardwood Forest - Taxodium/Nyssa Modifier
117911	Post replacement Early-development Atlantic Coastal Plain Peatland Pocosin	ReplacementFire	0.3500	117911	Post replacement Early-development Atlantic Coastal Plain Peatland Pocosin
118011	Post replacement Early-development Southern Coastal Plain Seepage Swamp and Baygall	MixedFire	0.0020	118011	Post replacement Early-development Southern Coastal Plain Seepage Swamp and Baygall
118011	Post replacement Early-development Southern Coastal Plain Seepage Swamp and Baygall	ReplacementFire	0.0070	118011	Post replacement Early-development Southern Coastal Plain Seepage Swamp and Baygall
118111	Post replacement Early-development Central Atlantic Coastal Plain Wet Longleaf Pine Savanna and Flatwoods	SurfaceFire	0.3000	118111	Post replacement Early-development Central Atlantic Coastal Plain Wet Longleaf Pine Savanna and Flatwoods
118111	Post replacement Early-development Central Atlantic Coastal Plain Wet Longleaf Pine Savanna and Flatwoods	ReplacementFire	0.0200	118111	Post replacement Early-development Central Atlantic Coastal Plain Wet Longleaf Pine Savanna and Flatwoods
118111	Post replacement Early-development Central Atlantic Coastal Plain Wet Longleaf Pine Savanna and Flatwoods	AltSuccession	1.0000	218121	Closed canopy Mid-development Central Atlantic Coastal Plain Wet Longleaf Pine Savanna and Flatwoods
118311	Post replacement Early-development Atlantic Coastal Plain Blackwater Stream Floodplain Forest - Forest Modifier	SurfaceFire	0.0100	118311	Post replacement Early-development Atlantic Coastal Plain Blackwater Stream Floodplain Forest - Forest Modifier
118311	Post replacement Early-development Atlantic Coastal Plain Blackwater Stream Floodplain Forest - Forest Modifier	MixedFire	0.0070	118311	Post replacement Early-development Atlantic Coastal Plain Blackwater Stream Floodplain Forest - Forest Modifier
118311	Post replacement Early-development Atlantic Coastal Plain Blackwater Stream Floodplain Forest - Forest Modifier	Wind/Weather/Stress	0.0050	118311	Post replacement Early-development Atlantic Coastal Plain Blackwater Stream Floodplain Forest - Forest Modifier
118311	Post replacement Early-development Atlantic Coastal Plain Blackwater Stream Floodplain Forest - Forest Modifier	OptionalI	0.0400	118311	Post replacement Early-development Atlantic Coastal Plain Blackwater Stream Floodplain Forest - Forest Modifier
118411	Post replacement Early-development Atlantic Coastal Plain Streamhead Seepage Swamp, Pocosin, and Baygall	MixedFire	0.1000	118411	Post replacement Early-development Atlantic Coastal Plain Streamhead Seepage Swamp, Pocosin, and Baygall
118511	Post replacement Early-development Atlantic Coastal Plain Small Blackwater River Floodplain Forest	SurfaceFire	0.0100	118511	Post replacement Early-development Atlantic Coastal Plain Small Blackwater River Floodplain Forest
118511	Post replacement Early-development Atlantic Coastal Plain Small Blackwater River Floodplain Forest	ReplacementFire	0.0300	118511	Post replacement Early-development Atlantic Coastal Plain Small Blackwater River Floodplain Forest
118511	Post replacement Early-development Atlantic Coastal Plain Small Blackwater River Floodplain Forest	OptionalI	0.0100	118511	Post replacement Early-development Atlantic Coastal Plain Small Blackwater River Floodplain Forest
118611	Post replacement Early-development Atlantic Coastal Plain Dry and Dry-Mesic Oak Forest	SurfaceFire	0.1400	118611	Post replacement Early-development Atlantic Coastal Plain Dry and Dry-Mesic Oak Forest
118611	Post replacement Early-development Atlantic Coastal Plain Dry and Dry-Mesic Oak Forest	ReplacementFire	0.0100	118611	Post replacement Early-development Atlantic Coastal Plain Dry and Dry-Mesic Oak Forest
118611	Post replacement Early-development Atlantic Coastal Plain Dry and Dry-Mesic Oak Forest	AltSuccession	1.0000	218621	Closed canopy Mid-development Atlantic Coastal Plain Dry and Dry-Mesic Oak Forest
118811	Post replacement Early-development Atlantic Coastal Plain Mesic Hardwood and Mixed Forest	MixedFire	0.0080	118811	Post replacement Early-development Atlantic Coastal Plain Mesic Hardwood and Mixed Forest
118811	Post replacement Early-development Atlantic Coastal Plain Mesic Hardwood and Mixed Forest	ReplacementFire	0.0030	118811	Post replacement Early-development Atlantic Coastal Plain Mesic Hardwood and Mixed Forest
119011	Post replacement Early-development Atlantic Coastal Plain Clay-Based Carolina Bay Forested Wetland	MixedFire	0.0100	119011	Post replacement Early-development Atlantic Coastal Plain Clay-Based Carolina Bay Forested Wetland
119011	Post replacement Early-development Atlantic Coastal Plain Clay-Based Carolina Bay Forested Wetland	ReplacementFire	0.0600	119011	Post replacement Early-development Atlantic Coastal Plain Clay-Based Carolina Bay Forested Wetland
119011	Post replacement Early-development Atlantic Coastal Plain Clay-Based Carolina Bay Forested Wetland	OptionalI	0.2000	119011	Post replacement Early-development Atlantic Coastal Plain Clay-Based Carolina Bay Forested Wetland
119111	Post replacement Early-development Atlantic Coastal Plain Southern Wet Pine Savanna and Flatwoods	SurfaceFire	0.3000	119111	Post replacement Early-development Atlantic Coastal Plain Southern Wet Pine Savanna and Flatwoods

From State Class ID	From StateClass Name	Disturbance	Probability	To State Class ID	To StateClass Name
119111	Post replacement Early-development Atlantic Coastal Plain Southern Wet Pine Savanna and Flatwoods	ReplacementFire	0.0200	119111	Post replacement Early-development Atlantic Coastal Plain Southern Wet Pine Savanna and Flatwoods
119111	Post replacement Early-development Atlantic Coastal Plain Southern Wet Pine Savanna and Flatwoods	AltSuccession	1.0000	219121	Closed canopy Mid-development Atlantic Coastal Plain Southern Wet Pine Savanna and Flatwoods
119211	Post replacement Early-development Atlantic Coastal Plain Fall-line Sandhills Longleaf Pine Woodland - Scrub/Shrub Understory Modifier	SurfaceFire	0.2500	119211	Post replacement Early-development Atlantic Coastal Plain Fall-line Sandhills Longleaf Pine Woodland - Scrub/Shrub Understory Modifier
119211	Post replacement Early-development Atlantic Coastal Plain Fall-line Sandhills Longleaf Pine Woodland - Scrub/Shrub Understory Modifier	ReplacementFire	0.0100	119211	Post replacement Early-development Atlantic Coastal Plain Fall-line Sandhills Longleaf Pine Woodland - Scrub/Shrub Understory Modifier
119211	Post replacement Early-development Atlantic Coastal Plain Fall-line Sandhills Longleaf Pine Woodland - Scrub/Shrub Understory Modifier	AltSuccession	1.0000	219221	Closed canopy Mid-development Atlantic Coastal Plain Fall-line Sandhills Longleaf Pine Woodland - Scrub/Shrub Understory Modifier
119311	Post replacement Early-development Atlantic Coastal Plain Upland Longleaf Pine Woodland	SurfaceFire	0.2500	119311	Post replacement Early-development Atlantic Coastal Plain Upland Longleaf Pine Woodland
119311	Post replacement Early-development Atlantic Coastal Plain Upland Longleaf Pine Woodland	ReplacementFire	0.0100	119311	Post replacement Early-development Atlantic Coastal Plain Upland Longleaf Pine Woodland
119311	Post replacement Early-development Atlantic Coastal Plain Upland Longleaf Pine Woodland	AltSuccession	1.0000	219321	Closed canopy Mid-development Atlantic Coastal Plain Upland Longleaf Pine Woodland
120111	Post replacement Early-development Evergreen Plantations or Managed Pine (can include dense successional regrowth)	SurfaceFire	0.0020	120111	Post replacement Early-development Evergreen Plantations or Managed Pine (can include dense successional regrowth)
120111	Post replacement Early-development Evergreen Plantations or Managed Pine (can include dense successional regrowth)	AltSuccession	1.0000	220121	Closed canopy Mid-development Evergreen Plantations or Managed Pine (can include dense successional regrowth)
120111	Post replacement Early-development Evergreen Plantations or Managed Pine (can include dense successional regrowth)	Thinning	1.0000	120111	Post replacement Early-development Evergreen Plantations or Managed Pine (can include dense successional regrowth)
120411	Post replacement Early-development Public Evergreen Plantations or Managed Pine (can include dense successional regrowth)	SurfaceFire	0.0020	120411	Post replacement Early-development Public Evergreen Plantations or Managed Pine (can include dense successional regrowth)
120411	Post replacement Early-development Public Evergreen Plantations or Managed Pine (can include dense successional regrowth)	AltSuccession	1.0000	220421	Closed canopy Mid-development Public Evergreen Plantations or Managed Pine (can include dense successional regrowth)
120411	Post replacement Early-development Public Evergreen Plantations or Managed Pine (can include dense successional regrowth)	Thinning	1.0000	120411	Post replacement Early-development Public Evergreen Plantations or Managed Pine (can include dense successional regrowth)
121911	Post replacement Early-development Atlantic Coastal Plain Large Natural Lakeshore	MixedFire	0.0100	121911	Post replacement Early-development Atlantic Coastal Plain Large Natural Lakeshore
121911	Post replacement Early-development Atlantic Coastal Plain Large Natural Lakeshore	ReplacementFire	0.0600	121911	Post replacement Early-development Atlantic Coastal Plain Large Natural Lakeshore
121911	Post replacement Early-development Atlantic Coastal Plain Large Natural Lakeshore	OptionalI	0.2000	121911	Post replacement Early-development Atlantic Coastal Plain Large Natural Lakeshore
123311	Post replacement Early-development East Gulf Coastal Plain Treeless Savanna and Wet Prairie	SurfaceFire	0.4000	123311	Post replacement Early-development East Gulf Coastal Plain Treeless Savanna and Wet Prairie
123311	Post replacement Early-development East Gulf Coastal Plain Treeless Savanna and Wet Prairie	ReplacementFire	0.0050	123311	Post replacement Early-development East Gulf Coastal Plain Treeless Savanna and Wet Prairie
123311	Post replacement Early-development East Gulf Coastal Plain Treeless Savanna and Wet Prairie	AltSuccession	1.0000	223321	Closed canopy Mid-development East Gulf Coastal Plain Treeless Savanna and Wet Prairie
136911	Post replacement Early-development Southern Coastal Plain Nonriverine Swamp and Wet Hardwood Forest - Taxodium Modifier	ReplacementFire	0.0100	136911	Post replacement Early-development Southern Coastal Plain Nonriverine Swamp and Wet Hardwood Forest - Taxodium Modifier
136911	Post replacement Early-development Southern Coastal Plain Nonriverine Swamp and Wet Hardwood Forest - Taxodium Modifier	AltSuccession	0.0400	236922	Closed canopy Mid-development Southern Coastal Plain Nonriverine Swamp and Wet Hardwood Forest - Taxodium Modifier
205721	Closed canopy Mid-development Southern Coastal Plain Dry Upland Hardwood Forest	SurfaceFire	0.0500	205721	Closed canopy Mid-development Southern Coastal Plain Dry Upland Hardwood Forest
205721	Closed canopy Mid-development Southern Coastal Plain Dry Upland Hardwood Forest	MixedFire	0.0500	305721	Open canopy Mid-development Southern Coastal Plain Dry Upland Hardwood Forest
205721	Closed canopy Mid-development Southern Coastal Plain Dry Upland Hardwood Forest	ReplacementFire	0.0050	105711	Post replacement Early-development Southern Coastal Plain Dry Upland Hardwood Forest
205721	Closed canopy Mid-development Southern Coastal Plain Dry Upland Hardwood Forest	Wind/Weather/Stress	0.0040	105711	Post replacement Early-development Southern Coastal Plain Dry Upland Hardwood Forest
205731	Closed canopy Late-development Southern Coastal Plain Dry Upland Hardwood Forest	SurfaceFire	0.0500	205731	Closed canopy Late-development Southern Coastal Plain Dry Upland Hardwood Forest
205731	Closed canopy Late-development Southern Coastal Plain Dry Upland Hardwood Forest	MixedFire	0.0100	305731	Open canopy Late-development Southern Coastal Plain Dry Upland Hardwood Forest
205731	Closed canopy Late-development Southern Coastal Plain Dry Upland Hardwood Forest	ReplacementFire	0.0050	105711	Post replacement Early-development Southern Coastal Plain Dry Upland Hardwood Forest
205731	Closed canopy Late-development Southern Coastal Plain Dry Upland Hardwood Forest	Insect/Disease	0.0050	105711	Post replacement Early-development Southern Coastal Plain Dry Upland Hardwood Forest
205731	Closed canopy Late-development Southern Coastal Plain Dry Upland Hardwood Forest	Wind/Weather/Stress	0.0100	305731	Open canopy Late-development Southern Coastal Plain Dry Upland Hardwood Forest
206621	Closed canopy Mid-development Southern Piedmont Dry Oak-(Pine) Forest - Hardwood Modifier	SurfaceFire	0.0500	206621	Closed canopy Mid-development Southern Piedmont Dry Oak-(Pine) Forest - Hardwood Modifier
206621	Closed canopy Mid-development Southern Piedmont Dry Oak-(Pine) Forest - Hardwood Modifier	MixedFire	0.0200	306621	Open canopy Mid-development Southern Piedmont Dry Oak-(Pine) Forest - Hardwood Modifier
206621	Closed canopy Mid-development Southern Piedmont Dry Oak-(Pine) Forest - Hardwood Modifier	ReplacementFire	0.0030	106611	Post replacement Early-development Southern Piedmont Dry Oak-(Pine) Forest - Hardwood Modifier
206621	Closed canopy Mid-development Southern Piedmont Dry Oak-(Pine) Forest - Hardwood Modifier	Insect/Disease	0.0040	306621	Open canopy Mid-development Southern Piedmont Dry Oak-(Pine) Forest - Hardwood Modifier







From State Class ID	From StateClass Name	Disturbance	Probability	To State Class ID	To StateClass Name
210821	Closed canopy Mid-development Southern Piedmont Dry Oak-(Pine) Forest - Mixed Modifier	Wind/Weather/Stress	0.0030	110811	Post replacement Early-development Southern Piedmont Dry Oak-(Pine) Forest - Mixed Modifier
210831	Closed canopy Late-development Southern Piedmont Dry Oak-(Pine) Forest - Mixed Modifier	SurfaceFire	0.0600	210831	Closed canopy Late-development Southern Piedmont Dry Oak-(Pine) Forest - Mixed Modifier
210831	Closed canopy Late-development Southern Piedmont Dry Oak-(Pine) Forest - Mixed Modifier	MixedFire	0.0100	310831	Open canopy Late-development Southern Piedmont Dry Oak-(Pine) Forest - Mixed Modifier
210831	Closed canopy Late-development Southern Piedmont Dry Oak-(Pine) Forest - Mixed Modifier	ReplacementFire	0.0020	110811	Post replacement Early-development Southern Piedmont Dry Oak-(Pine) Forest - Mixed Modifier
210831	Closed canopy Late-development Southern Piedmont Dry Oak-(Pine) Forest - Mixed Modifier	Insect/Disease	0.0020	310831	Open canopy Late-development Southern Piedmont Dry Oak-(Pine) Forest - Mixed Modifier
210831	Closed canopy Late-development Southern Piedmont Dry Oak-(Pine) Forest - Mixed Modifier	Wind/Weather/Stress	0.0100	310831	Open canopy Late-development Southern Piedmont Dry Oak-(Pine) Forest - Mixed Modifier
212421	Closed canopy Mid-development Florida Peninsula Inland Scrub	ReplacementFire	0.0360	112411	Post replacement Early-development Florida Peninsula Inland Scrub
212421	Closed canopy Mid-development Florida Peninsula Inland Scrub	Wind/Weather/Stress	0.0050	112411	Post replacement Early-development Florida Peninsula Inland Scrub
212431	Closed canopy Late-development Florida Peninsula Inland Scrub	MixedFire	0.0040	312431	Open canopy Late-development Florida Peninsula Inland Scrub
212431	Closed canopy Late-development Florida Peninsula Inland Scrub	ReplacementFire	0.0330	112411	Post replacement Early-development Florida Peninsula Inland Scrub
212431	Closed canopy Late-development Florida Peninsula Inland Scrub	Insect/Disease	0.0170	312431	Open canopy Late-development Florida Peninsula Inland Scrub
212431	Closed canopy Late-development Florida Peninsula Inland Scrub	Wind/Weather/Stress	0.0050	112411	Post replacement Early-development Florida Peninsula Inland Scrub
214021	Closed canopy Mid-development Mississippi River Riparian Forest	SurfaceFire	0.0100	214021	Closed canopy Mid-development Mississippi River Riparian Forest
214021	Closed canopy Mid-development Mississippi River Riparian Forest	ReplacementFire	0.0020	114011	Post replacement Early-development Mississippi River Riparian Forest
214021	Closed canopy Mid-development Mississippi River Riparian Forest	Insect/Disease	0.0010	114011	Post replacement Early-development Mississippi River Riparian Forest
214021	Closed canopy Mid-development Mississippi River Riparian Forest	Wind/Weather/Stress	0.0040	114011	Post replacement Early-development Mississippi River Riparian Forest
214021	Closed canopy Mid-development Mississippi River Riparian Forest	Optional1	0.0040	114011	Post replacement Early-development Mississippi River Riparian Forest
214031	Closed canopy Late-development Mississippi River Riparian Forest	SurfaceFire	0.0100	214031	Closed canopy Late-development Mississippi River Riparian Forest
214031	Closed canopy Late-development Mississippi River Riparian Forest	ReplacementFire	0.0020	114011	Post replacement Early-development Mississippi River Riparian Forest
214031	Closed canopy Late-development Mississippi River Riparian Forest	Insect/Disease	0.0020	114011	Post replacement Early-development Mississippi River Riparian Forest
214031	Closed canopy Late-development Mississippi River Riparian Forest	Wind/Weather/Stress	0.0020	114011	Post replacement Early-development Mississippi River Riparian Forest
214031	Closed canopy Late-development Mississippi River Riparian Forest	Optional1	0.0020	114011	Post replacement Early-development Mississippi River Riparian Forest
214221	Closed canopy Mid-development East Gulf Coastal Plain Near-Coast Pine Flatwoods - Scrub/Shrub	SurfaceFire	0.3100	214221	Closed canopy Mid-development East Gulf Coastal Plain Near-Coast Pine Flatwoods - Scrub/Shrub
214221	Closed canopy Mid-development East Gulf Coastal Plain Near-Coast Pine Flatwoods - Scrub/Shrub	MixedFire	0.0200	314221	Open canopy Mid-development East Gulf Coastal Plain Near-Coast Pine Flatwoods - Scrub/Shrub
214221	Closed canopy Mid-development East Gulf Coastal Plain Near-Coast Pine Flatwoods - Scrub/Shrub	ReplacementFire	0.0100	114211	Post replacement Early-development East Gulf Coastal Plain Near-Coast Pine Flatwoods - Scrub/Shrub
214221	Closed canopy Mid-development East Gulf Coastal Plain Near-Coast Pine Flatwoods - Scrub/Shrub	Wind/Weather/Stress	0.0050	214221	Closed canopy Mid-development East Gulf Coastal Plain Near-Coast Pine Flatwoods - Scrub/Shrub
214231	Closed canopy Late-development East Gulf Coastal Plain Near-Coast Pine Flatwoods - Scrub/Shrub	SurfaceFire	0.3100	214231	Closed canopy Late-development East Gulf Coastal Plain Near-Coast Pine Flatwoods - Scrub/Shrub
214231	Closed canopy Late-development East Gulf Coastal Plain Near-Coast Pine Flatwoods - Scrub/Shrub	MixedFire	0.0100	314231	Open canopy Late-development East Gulf Coastal Plain Near-Coast Pine Flatwoods - Scrub/Shrub
214231	Closed canopy Late-development East Gulf Coastal Plain Near-Coast Pine Flatwoods - Scrub/Shrub	ReplacementFire	0.0100	114211	Post replacement Early-development East Gulf Coastal Plain Near-Coast Pine Flatwoods - Scrub/Shrub
214231	Closed canopy Late-development East Gulf Coastal Plain Near-Coast Pine Flatwoods - Scrub/Shrub	Wind/Weather/Stress	0.0043	114211	Post replacement Early-development East Gulf Coastal Plain Near-Coast Pine Flatwoods - Scrub/Shrub
214321	Closed canopy Mid-development Central Florida Pine Flatwoods	SurfaceFire	0.4000	214321	Closed canopy Mid-development Central Florida Pine Flatwoods
214321	Closed canopy Mid-development Central Florida Pine Flatwoods	MixedFire	0.0070	314321	Open canopy Mid-development Central Florida Pine Flatwoods
214321	Closed canopy Mid-development Central Florida Pine Flatwoods	ReplacementFire	0.0050	114311	Post replacement Early-development Central Florida Pine Flatwoods
214321	Closed canopy Mid-development Central Florida Pine Flatwoods	Wind/Weather/Stress	0.0050	114311	Post replacement Early-development Central Florida Pine Flatwoods
214331	Closed canopy Late-development Central Florida Pine Flatwoods	SurfaceFire	0.4000	214331	Closed canopy Late-development Central Florida Pine Flatwoods



















From State Class ID	From StateClass Name	Disturbance	Probability	To State Class ID	To StateClass Name
219032	Closed canopy Late-development Atlantic Coastal Plain Clay-Based Carolina Bay Forested Wetland	ReplacementFire	0.0025	119011	Post replacement Early-development Atlantic Coastal Plain Clay-Based Carolina Bay Forested Wetland
219121	Closed canopy Mid-development Atlantic Coastal Plain Southern Wet Pine Savanna and Flatwoods	SurfaceFire	0.3100	219121	Closed canopy Mid-development Atlantic Coastal Plain Southern Wet Pine Savanna and Flatwoods
219121	Closed canopy Mid-development Atlantic Coastal Plain Southern Wet Pine Savanna and Flatwoods	MixedFire	0.0200	319121	Open canopy Mid-development Atlantic Coastal Plain Southern Wet Pine Savanna and Flatwoods
219121	Closed canopy Mid-development Atlantic Coastal Plain Southern Wet Pine Savanna and Flatwoods	ReplacementFire	0.0100	119111	Post replacement Early-development Atlantic Coastal Plain Southern Wet Pine Savanna and Flatwoods
219121	Closed canopy Mid-development Atlantic Coastal Plain Southern Wet Pine Savanna and Flatwoods	Wind/Weather/Stress	0.0050	219121	Closed canopy Mid-development Atlantic Coastal Plain Southern Wet Pine Savanna and Flatwoods
219131	Closed canopy Late-development Atlantic Coastal Plain Southern Wet Pine Savanna and Flatwoods	SurfaceFire	0.3100	219131	Closed canopy Late-development Atlantic Coastal Plain Southern Wet Pine Savanna and Flatwoods
219131	Closed canopy Late-development Atlantic Coastal Plain Southern Wet Pine Savanna and Flatwoods	MixedFire	0.0100	319131	Open canopy Late-development Atlantic Coastal Plain Southern Wet Pine Savanna and Flatwoods
219131	Closed canopy Late-development Atlantic Coastal Plain Southern Wet Pine Savanna and Flatwoods	ReplacementFire	0.0100	119111	Post replacement Early-development Atlantic Coastal Plain Southern Wet Pine Savanna and Flatwoods
219131	Closed canopy Late-development Atlantic Coastal Plain Southern Wet Pine Savanna and Flatwoods	Wind/Weather/Stress	0.0043	119111	Post replacement Early-development Atlantic Coastal Plain Southern Wet Pine Savanna and Flatwoods
219221	Closed canopy Mid-development Atlantic Coastal Plain Fall-line Sandhills Longleaf Pine Woodland - Scrub/Shrub Understory Modifier	MixedFire	0.0500	319221	Open canopy Mid-development Atlantic Coastal Plain Fall-line Sandhills Longleaf Pine Woodland - Scrub/Shrub Understory Modifier
219221	Closed canopy Mid-development Atlantic Coastal Plain Fall-line Sandhills Longleaf Pine Woodland - Scrub/Shrub Understory Modifier	ReplacementFire	0.0100	119211	Post replacement Early-development Atlantic Coastal Plain Fall-line Sandhills Longleaf Pine Woodland - Scrub/Shrub Understory Modifier
219221	Closed canopy Mid-development Atlantic Coastal Plain Fall-line Sandhills Longleaf Pine Woodland - Scrub/Shrub Understory Modifier	Competition/Maint	0.0100	219221	Closed canopy Mid-development Atlantic Coastal Plain Fall-line Sandhills Longleaf Pine Woodland - Scrub/Shrub Understory Modifier
219221	Closed canopy Mid-development Atlantic Coastal Plain Fall-line Sandhills Longleaf Pine Woodland - Scrub/Shrub Understory Modifier	Insect/Disease	0.0010	119211	Post replacement Early-development Atlantic Coastal Plain Fall-line Sandhills Longleaf Pine Woodland - Scrub/Shrub Understory Modifier
219221	Closed canopy Mid-development Atlantic Coastal Plain Fall-line Sandhills Longleaf Pine Woodland - Scrub/Shrub Understory Modifier	Wind/Weather/Stress	0.0010	119211	Post replacement Early-development Atlantic Coastal Plain Fall-line Sandhills Longleaf Pine Woodland - Scrub/Shrub Understory Modifier
219231	Closed canopy Late-development Atlantic Coastal Plain Fall-line Sandhills Longleaf Pine Woodland - Scrub/Shrub Understory Modifier	MixedFire	0.0100	319231	Open canopy Late-development Atlantic Coastal Plain Fall-line Sandhills Longleaf Pine Woodland - Scrub/Shrub Understory Modifier
219231	Closed canopy Late-development Atlantic Coastal Plain Fall-line Sandhills Longleaf Pine Woodland - Scrub/Shrub Understory Modifier	ReplacementFire	0.0100	119211	Post replacement Early-development Atlantic Coastal Plain Fall-line Sandhills Longleaf Pine Woodland - Scrub/Shrub Understory Modifier
219231	Closed canopy Late-development Atlantic Coastal Plain Fall-line Sandhills Longleaf Pine Woodland - Scrub/Shrub Understory Modifier	Competition/Maint	0.0100	219231	Closed canopy Late-development Atlantic Coastal Plain Fall-line Sandhills Longleaf Pine Woodland - Scrub/Shrub Understory Modifier
219321	Closed canopy Mid-development Atlantic Coastal Plain Upland Longleaf Pine Woodland	MixedFire	0.0500	319321	Open canopy Mid-development Atlantic Coastal Plain Upland Longleaf Pine Woodland
219321	Closed canopy Mid-development Atlantic Coastal Plain Upland Longleaf Pine Woodland	ReplacementFire	0.0100	119311	Post replacement Early-development Atlantic Coastal Plain Upland Longleaf Pine Woodland
219321	Closed canopy Mid-development Atlantic Coastal Plain Upland Longleaf Pine Woodland	Competition/Maint	0.0100	219321	Closed canopy Mid-development Atlantic Coastal Plain Upland Longleaf Pine Woodland
219321	Closed canopy Mid-development Atlantic Coastal Plain Upland Longleaf Pine Woodland	Insect/Disease	0.0010	119311	Post replacement Early-development Atlantic Coastal Plain Upland Longleaf Pine Woodland
219321	Closed canopy Mid-development Atlantic Coastal Plain Upland Longleaf Pine Woodland	Wind/Weather/Stress	0.0010	119311	Post replacement Early-development Atlantic Coastal Plain Upland Longleaf Pine Woodland
219331	Closed canopy Late-development Atlantic Coastal Plain Upland Longleaf Pine Woodland	MixedFire	0.0100	319331	Open canopy Late-development Atlantic Coastal Plain Upland Longleaf Pine Woodland
219331	Closed canopy Late-development Atlantic Coastal Plain Upland Longleaf Pine Woodland	ReplacementFire	0.0100	119311	Post replacement Early-development Atlantic Coastal Plain Upland Longleaf Pine Woodland
219331	Closed canopy Late-development Atlantic Coastal Plain Upland Longleaf Pine Woodland	Competition/Maint	0.0100	219331	Closed canopy Late-development Atlantic Coastal Plain Upland Longleaf Pine Woodland
219421	Closed canopy Mid-development Southern Coastal Plain Hydric Hammock	SurfaceFire	0.0050	219421	Closed canopy Mid-development Southern Coastal Plain Hydric Hammock
219421	Closed canopy Mid-development Southern Coastal Plain Hydric Hammock	Wind/Weather/Stress	0.0100	119411	Post replacement Early-development Southern Coastal Plain Hydric Hammock
219431	Closed canopy Late-development Southern Coastal Plain Hydric Hammock	SurfaceFire	0.0050	219431	Closed canopy Late-development Southern Coastal Plain Hydric Hammock
219431	Closed canopy Late-development Southern Coastal Plain Hydric Hammock	Wind/Weather/Stress	0.0100	119411	Post replacement Early-development Southern Coastal Plain Hydric Hammock
220121	Closed canopy Mid-development Evergreen Plantations or Managed Pine (can include dense successional regrowth)	SurfaceFire	0.0020	320121	Open canopy Mid-development Evergreen Plantations or Managed Pine (can include dense successional regrowth)
220121	Closed canopy Mid-development Evergreen Plantations or Managed Pine (can include dense successional regrowth)	ReplacementFire	0.0020	120111	Post replacement Early-development Evergreen Plantations or Managed Pine (can include dense successional regrowth)
220121	Closed canopy Mid-development Evergreen Plantations or Managed Pine (can include dense successional regrowth)	ClearCut	1.0000	320211	Open canopy Early-development Clearcut - Grassland/Herbaceous
220121	Closed canopy Mid-development Evergreen Plantations or Managed Pine (can include dense successional regrowth)	Thinning	1.0000	320121	Open canopy Mid-development Evergreen Plantations or Managed Pine (can include dense successional regrowth)
220131	Closed canopy Late-development Evergreen Plantations or Managed Pine (can include dense successional regrowth)	SurfaceFire	0.0020	220131	Closed canopy Late-development Evergreen Plantations or Managed Pine (can include dense successional regrowth)

From State Class ID	From StateClass Name	Disturbance	Probability	To State Class ID	To StateClass Name
220131	Closed canopy Late-development Evergreen Plantations or Managed Pine (can include dense successional regrowth)	ReplacementFire	0.0020	320211	Open canopy Early-development Clearcut - Grassland/Herbaceous
220131	Closed canopy Late-development Evergreen Plantations or Managed Pine (can include dense successional regrowth)	ClearCut	1.0000	120111	Post replacement Early-development Evergreen Plantations or Managed Pine (can include dense successional regrowth)
220421	Closed canopy Mid-development Public Evergreen Plantations or Managed Pine (can include dense successional regrowth)	SurfaceFire	0.0020	320421	Open canopy Mid-development Public Evergreen Plantations or Managed Pine (can include dense successional regrowth)
220421	Closed canopy Mid-development Public Evergreen Plantations or Managed Pine (can include dense successional regrowth)	ReplacementFire	0.0020	120411	Post replacement Early-development Public Evergreen Plantations or Managed Pine (can include dense successional regrowth)
220421	Closed canopy Mid-development Public Evergreen Plantations or Managed Pine (can include dense successional regrowth)	ClearCut	1.0000	320511	Open canopy Early-development Public Clearcut - Grassland/Herbaceous
220421	Closed canopy Mid-development Public Evergreen Plantations or Managed Pine (can include dense successional regrowth)	Thinning	1.0000	320421	Open canopy Mid-development Public Evergreen Plantations or Managed Pine (can include dense successional regrowth)
220431	Closed canopy Late-development Public Evergreen Plantations or Managed Pine (can include dense successional regrowth)	SurfaceFire	0.0020	220431	Closed canopy Late-development Public Evergreen Plantations or Managed Pine (can include dense successional regrowth)
220431	Closed canopy Late-development Public Evergreen Plantations or Managed Pine (can include dense successional regrowth)	ReplacementFire	0.0020	320511	Open canopy Early-development Public Clearcut - Grassland/Herbaceous
220431	Closed canopy Late-development Public Evergreen Plantations or Managed Pine (can include dense successional regrowth)	ClearCut	1.0000	120411	Post replacement Early-development Public Evergreen Plantations or Managed Pine (can include dense successional regrowth)
221932	Closed canopy Late-development Atlantic Coastal Plain Large Natural Lakeshore	SurfaceFire	0.0400	221932	Closed canopy Late-development Atlantic Coastal Plain Large Natural Lakeshore
221932	Closed canopy Late-development Atlantic Coastal Plain Large Natural Lakeshore	MixedFire	0.0200	321921	Open canopy Mid-development Atlantic Coastal Plain Large Natural Lakeshore
221932	Closed canopy Late-development Atlantic Coastal Plain Large Natural Lakeshore	ReplacementFire	0.0025	121911	Post replacement Early-development Atlantic Coastal Plain Large Natural Lakeshore
222821	Closed canopy Mid-development Floridian Highlands Freshwater Marsh	ReplacementFire	0.2500	122811	Post replacement Early-development Floridian Highlands Freshwater Marsh
222822	Closed canopy Mid-development Floridian Highlands Freshwater Marsh	MixedFire	0.1000	222822	Closed canopy Mid-development Floridian Highlands Freshwater Marsh
222822	Closed canopy Mid-development Floridian Highlands Freshwater Marsh	ReplacementFire	0.1500	122811	Post replacement Early-development Floridian Highlands Freshwater Marsh
222831	Closed canopy Late-development Floridian Highlands Freshwater Marsh	MixedFire	0.0500	222831	Closed canopy Late-development Floridian Highlands Freshwater Marsh
222831	Closed canopy Late-development Floridian Highlands Freshwater Marsh	ReplacementFire	0.1500	122811	Post replacement Early-development Floridian Highlands Freshwater Marsh
222832	Closed canopy Late-development Floridian Highlands Freshwater Marsh	ReplacementFire	0.0430	122811	Post replacement Early-development Floridian Highlands Freshwater Marsh
222832	Closed canopy Late-development Floridian Highlands Freshwater Marsh	Wind/Weather/Stress	0.0100	122811	Post replacement Early-development Floridian Highlands Freshwater Marsh
223121	Closed canopy Mid-development Southern Coastal Plain Herbaceous Seepage Bog	SurfaceFire	0.0050	223121	Closed canopy Mid-development Southern Coastal Plain Herbaceous Seepage Bog
223121	Closed canopy Mid-development Southern Coastal Plain Herbaceous Seepage Bog	Wind/Weather/Stress	0.0100	123111	Post replacement Early-development Southern Coastal Plain Herbaceous Seepage Bog
223131	Closed canopy Late-development Southern Coastal Plain Herbaceous Seepage Bog	SurfaceFire	0.0050	223131	Closed canopy Late-development Southern Coastal Plain Herbaceous Seepage Bog
223131	Closed canopy Late-development Southern Coastal Plain Herbaceous Seepage Bog	Wind/Weather/Stress	0.0100	123111	Post replacement Early-development Southern Coastal Plain Herbaceous Seepage Bog
223321	Closed canopy Mid-development East Gulf Coastal Plain Treeless Savanna and Wet Prairie	SurfaceFire	0.0500	223321	Closed canopy Mid-development East Gulf Coastal Plain Treeless Savanna and Wet Prairie
223321	Closed canopy Mid-development East Gulf Coastal Plain Treeless Savanna and Wet Prairie	MixedFire	0.0300	323321	Open canopy Mid-development East Gulf Coastal Plain Treeless Savanna and Wet Prairie
223321	Closed canopy Mid-development East Gulf Coastal Plain Treeless Savanna and Wet Prairie	ReplacementFire	0.0300	123311	Post replacement Early-development East Gulf Coastal Plain Treeless Savanna and Wet Prairie
223321	Closed canopy Mid-development East Gulf Coastal Plain Treeless Savanna and Wet Prairie	Competition/Maint	0.0100	223321	Closed canopy Mid-development East Gulf Coastal Plain Treeless Savanna and Wet Prairie
223321	Closed canopy Mid-development East Gulf Coastal Plain Treeless Savanna and Wet Prairie	Wind/Weather/Stress	0.0050	123311	Post replacement Early-development East Gulf Coastal Plain Treeless Savanna and Wet Prairie
223331	Closed canopy Late-development East Gulf Coastal Plain Treeless Savanna and Wet Prairie	MixedFire	0.0200	323331	Open canopy Late-development East Gulf Coastal Plain Treeless Savanna and Wet Prairie
223331	Closed canopy Late-development East Gulf Coastal Plain Treeless Savanna and Wet Prairie	ReplacementFire	0.0200	123311	Post replacement Early-development East Gulf Coastal Plain Treeless Savanna and Wet Prairie
223331	Closed canopy Late-development East Gulf Coastal Plain Treeless Savanna and Wet Prairie	Competition/Maint	0.0100	223331	Closed canopy Late-development East Gulf Coastal Plain Treeless Savanna and Wet Prairie
223331	Closed canopy Late-development East Gulf Coastal Plain Treeless Savanna and Wet Prairie	Wind/Weather/Stress	0.0100	223321	Closed canopy Mid-development East Gulf Coastal Plain Treeless Savanna and Wet Prairie
225021	Closed canopy Mid-development East Gulf Coastal Plain Tidal Wooded Swamp	SurfaceFire	0.0050	225021	Closed canopy Mid-development East Gulf Coastal Plain Tidal Wooded Swamp
225021	Closed canopy Mid-development East Gulf Coastal Plain Tidal Wooded Swamp	Wind/Weather/Stress	0.0100	125011	Post replacement Early-development East Gulf Coastal Plain Tidal Wooded Swamp
225031	Closed canopy Late-development East Gulf Coastal Plain Tidal Wooded Swamp	SurfaceFire	0.0050	225031	Closed canopy Late-development East Gulf Coastal Plain Tidal Wooded Swamp



















From State Class ID	From StateClass Name	Disturbance	Probability	To State Class ID	To StateClass Name
316831	Open canopy Late-development Southern Piedmont Small Floodplain and Riparian Forest	SurfaceFire	0.0050	316831	Open canopy Late-development Southern Piedmont Small Floodplain and Riparian Forest
316831	Open canopy Late-development Southern Piedmont Small Floodplain and Riparian Forest	ReplacementFire	0.0010	116811	Post replacement Early-development Southern Piedmont Small Floodplain and Riparian Forest
316831	Open canopy Late-development Southern Piedmont Small Floodplain and Riparian Forest	Wind/Weather/Stress	0.0050	116811	Post replacement Early-development Southern Piedmont Small Floodplain and Riparian Forest
316831	Open canopy Late-development Southern Piedmont Small Floodplain and Riparian Forest	Optional1	0.0030	116811	Post replacement Early-development Southern Piedmont Small Floodplain and Riparian Forest
316831	Open canopy Late-development Southern Piedmont Small Floodplain and Riparian Forest	Optional2	0.0100	316831	Open canopy Late-development Southern Piedmont Small Floodplain and Riparian Forest
316921	Open canopy Mid-development Southern Piedmont Mesic Forest	SurfaceFire	0.0350	316921	Open canopy Mid-development Southern Piedmont Mesic Forest
316921	Open canopy Mid-development Southern Piedmont Mesic Forest	MixedFire	0.0030	316921	Open canopy Mid-development Southern Piedmont Mesic Forest
316921	Open canopy Mid-development Southern Piedmont Mesic Forest	ReplacementFire	0.0020	116911	Post replacement Early-development Southern Piedmont Mesic Forest
316921	Open canopy Mid-development Southern Piedmont Mesic Forest	Insect/Disease	0.0030	316921	Open canopy Mid-development Southern Piedmont Mesic Forest
316921	Open canopy Mid-development Southern Piedmont Mesic Forest	Wind/Weather/Stress	0.0100	316921	Open canopy Mid-development Southern Piedmont Mesic Forest
316921	Open canopy Mid-development Southern Piedmont Mesic Forest	Optional1	0.0020	116911	Post replacement Early-development Southern Piedmont Mesic Forest
316921	Open canopy Mid-development Southern Piedmont Mesic Forest	AltSuccession	1.0000	216921	Closed canopy Mid-development Southern Piedmont Mesic Forest
316931	Open canopy Late-development Southern Piedmont Mesic Forest	SurfaceFire	0.0350	316931	Open canopy Late-development Southern Piedmont Mesic Forest
316931	Open canopy Late-development Southern Piedmont Mesic Forest	MixedFire	0.0030	316931	Open canopy Late-development Southern Piedmont Mesic Forest
316931	Open canopy Late-development Southern Piedmont Mesic Forest	ReplacementFire	0.0020	116911	Post replacement Early-development Southern Piedmont Mesic Forest
316931	Open canopy Late-development Southern Piedmont Mesic Forest	Insect/Disease	0.0030	316931	Open canopy Late-development Southern Piedmont Mesic Forest
316931	Open canopy Late-development Southern Piedmont Mesic Forest	Wind/Weather/Stress	0.0100	316931	Open canopy Late-development Southern Piedmont Mesic Forest
316931	Open canopy Late-development Southern Piedmont Mesic Forest	Optional1	0.0020	116911	Post replacement Early-development Southern Piedmont Mesic Forest
316931	Open canopy Late-development Southern Piedmont Mesic Forest	AltSuccession	1.0000	216931	Closed canopy Late-development Southern Piedmont Mesic Forest
317021	Open canopy Mid-development Southern Piedmont Dry Oak-(Pine) Forest - Loblolly Pine Modifier	SurfaceFire	0.2500	317021	Open canopy Mid-development Southern Piedmont Dry Oak-(Pine) Forest - Loblolly Pine Modifier
317021	Open canopy Mid-development Southern Piedmont Dry Oak-(Pine) Forest - Loblolly Pine Modifier	ReplacementFire	0.0050	117011	Post replacement Early-development Southern Piedmont Dry Oak-(Pine) Forest - Loblolly Pine Modifier
317021	Open canopy Mid-development Southern Piedmont Dry Oak-(Pine) Forest - Loblolly Pine Modifier	Wind/Weather/Stress	0.0030	117011	Post replacement Early-development Southern Piedmont Dry Oak-(Pine) Forest - Loblolly Pine Modifier
317021	Open canopy Mid-development Southern Piedmont Dry Oak-(Pine) Forest - Loblolly Pine Modifier	NativeGrazing	0.0040	317021	Open canopy Mid-development Southern Piedmont Dry Oak-(Pine) Forest - Loblolly Pine Modifier
317021	Open canopy Mid-development Southern Piedmont Dry Oak-(Pine) Forest - Loblolly Pine Modifier	AltSuccession	1.0000	217021	Closed canopy Mid-development Southern Piedmont Dry Oak-(Pine) Forest - Loblolly Pine Modifier
317031	Open canopy Late-development Southern Piedmont Dry Oak-(Pine) Forest - Loblolly Pine Modifier	SurfaceFire	0.2500	317031	Open canopy Late-development Southern Piedmont Dry Oak-(Pine) Forest - Loblolly Pine Modifier
317031	Open canopy Late-development Southern Piedmont Dry Oak-(Pine) Forest - Loblolly Pine Modifier	ReplacementFire	0.0020	117011	Post replacement Early-development Southern Piedmont Dry Oak-(Pine) Forest - Loblolly Pine Modifier
317031	Open canopy Late-development Southern Piedmont Dry Oak-(Pine) Forest - Loblolly Pine Modifier	Insect/Disease	0.0020	117011	Post replacement Early-development Southern Piedmont Dry Oak-(Pine) Forest - Loblolly Pine Modifier
317031	Open canopy Late-development Southern Piedmont Dry Oak-(Pine) Forest - Loblolly Pine Modifier	Wind/Weather/Stress	0.0020	117011	Post replacement Early-development Southern Piedmont Dry Oak-(Pine) Forest - Loblolly Pine Modifier
317031	Open canopy Late-development Southern Piedmont Dry Oak-(Pine) Forest - Loblolly Pine Modifier	NativeGrazing	0.0070	317031	Open canopy Late-development Southern Piedmont Dry Oak-(Pine) Forest - Loblolly Pine Modifier
317031	Open canopy Late-development Southern Piedmont Dry Oak-(Pine) Forest - Loblolly Pine Modifier	AltSuccession	1.0000	217031	Closed canopy Late-development Southern Piedmont Dry Oak-(Pine) Forest - Loblolly Pine Modifier
317121	Open canopy Mid-development Atlantic Coastal Plain Xeric River Dune	MixedFire	0.0769	117111	Post replacement Early-development Atlantic Coastal Plain Xeric River Dune
317131	Open canopy Late-development Atlantic Coastal Plain Xeric River Dune	MixedFire	0.0769	317121	Open canopy Mid-development Atlantic Coastal Plain Xeric River Dune
317131	Open canopy Late-development Atlantic Coastal Plain Xeric River Dune	AltSuccession	1.0000	217131	Closed canopy Late-development Atlantic Coastal Plain Xeric River Dune
317221	Open canopy Mid-development East Gulf Coastal Plain Interior Upland Longleaf Pine Woodland - Offsite Hardwood Modifier	SurfaceFire	0.3300	317221	Open canopy Mid-development East Gulf Coastal Plain Interior Upland Longleaf Pine Woodland - Offsite Hardwood Modifier
317221	Open canopy Mid-development East Gulf Coastal Plain Interior Upland Longleaf Pine Woodland - Offsite Hardwood Modifier	ReplacementFire	0.0083	117211	Post replacement Early-development East Gulf Coastal Plain Interior Upland Longleaf Pine Woodland - Offsite Hardwood Modifier







[illegible]





From State Class ID	From StateClass Name	Disturbance	Probability	To State Class ID	To StateClass Name
320621	Open canopy Mid-development Public Successional Shrub/Scrub (Clear Cut)	AltSuccession	0.0050	320621	Open canopy Mid-development Public Successional Shrub/Scrub (Clear Cut)
320621	Open canopy Mid-development Public Successional Shrub/Scrub (Clear Cut)	Planting	1.0000	120411	Post replacement Early-development Public Evergreen Plantations or Managed Pine (can include dense successional regrowth)
320631	Open canopy Late-development Public Successional Shrub/Scrub (Clear Cut)	SurfaceFire	0.0020	320621	Open canopy Mid-development Public Successional Shrub/Scrub (Clear Cut)
320631	Open canopy Late-development Public Successional Shrub/Scrub (Clear Cut)	ReplacementFire	0.0020	320511	Open canopy Early-development Public Clearcut - Grassland/Herbaceous
320631	Open canopy Late-development Public Successional Shrub/Scrub (Clear Cut)	AltSuccession	0.0000	120411	Post replacement Early-development Public Evergreen Plantations or Managed Pine (can include dense successional regrowth)
320631	Open canopy Late-development Public Successional Shrub/Scrub (Clear Cut)	Planting	1.0000	120411	Post replacement Early-development Public Evergreen Plantations or Managed Pine (can include dense successional regrowth)
321311	Open canopy Early-development Atlantic Coastal Plain Central Fresh-Oligohaline Tidal Marsh	ReplacementFire	0.2500	321311	Open canopy Early-development Atlantic Coastal Plain Central Fresh-Oligohaline Tidal Marsh
321311	Open canopy Early-development Atlantic Coastal Plain Central Fresh-Oligohaline Tidal Marsh	Optional1	0.0080	321312	Open canopy Early-development Atlantic Coastal Plain Central Fresh-Oligohaline Tidal Marsh
321312	Open canopy Early-development Atlantic Coastal Plain Central Fresh-Oligohaline Tidal Marsh	ReplacementFire	0.0400	321311	Open canopy Early-development Atlantic Coastal Plain Central Fresh-Oligohaline Tidal Marsh
321321	Open canopy Mid-development Atlantic Coastal Plain Central Fresh-Oligohaline Tidal Marsh	ReplacementFire	0.1500	321311	Open canopy Early-development Atlantic Coastal Plain Central Fresh-Oligohaline Tidal Marsh
321322	Open canopy Mid-development Atlantic Coastal Plain Central Fresh-Oligohaline Tidal Marsh	MixedFire	0.0700	321322	Open canopy Mid-development Atlantic Coastal Plain Central Fresh-Oligohaline Tidal Marsh
321322	Open canopy Mid-development Atlantic Coastal Plain Central Fresh-Oligohaline Tidal Marsh	ReplacementFire	0.0700	321311	Open canopy Early-development Atlantic Coastal Plain Central Fresh-Oligohaline Tidal Marsh
321322	Open canopy Mid-development Atlantic Coastal Plain Central Fresh-Oligohaline Tidal Marsh	Optional2	0.0400	321321	Open canopy Mid-development Atlantic Coastal Plain Central Fresh-Oligohaline Tidal Marsh
321411	Open canopy Early-development Atlantic Coastal Plain Embayed Region Tidal Freshwater Marsh	ReplacementFire	0.2500	321411	Open canopy Early-development Atlantic Coastal Plain Embayed Region Tidal Freshwater Marsh
321421	Open canopy Mid-development Atlantic Coastal Plain Embayed Region Tidal Freshwater Marsh	ReplacementFire	0.1500	321411	Open canopy Early-development Atlantic Coastal Plain Embayed Region Tidal Freshwater Marsh
321422	Open canopy Mid-development Atlantic Coastal Plain Embayed Region Tidal Freshwater Marsh	MixedFire	0.0700	321422	Open canopy Mid-development Atlantic Coastal Plain Embayed Region Tidal Freshwater Marsh
321422	Open canopy Mid-development Atlantic Coastal Plain Embayed Region Tidal Freshwater Marsh	ReplacementFire	0.0700	321411	Open canopy Early-development Atlantic Coastal Plain Embayed Region Tidal Freshwater Marsh
321422	Open canopy Mid-development Atlantic Coastal Plain Embayed Region Tidal Freshwater Marsh	Optional2	0.0400	321421	Open canopy Mid-development Atlantic Coastal Plain Embayed Region Tidal Freshwater Marsh
321921	Open canopy Mid-development Atlantic Coastal Plain Large Natural Lakeshore	SurfaceFire	0.1000	321921	Open canopy Mid-development Atlantic Coastal Plain Large Natural Lakeshore
321921	Open canopy Mid-development Atlantic Coastal Plain Large Natural Lakeshore	ReplacementFire	0.0050	121911	Post replacement Early-development Atlantic Coastal Plain Large Natural Lakeshore
321921	Open canopy Mid-development Atlantic Coastal Plain Large Natural Lakeshore	AltSuccession	1.0000	221932	Closed canopy Late-development Atlantic Coastal Plain Large Natural Lakeshore
323321	Open canopy Mid-development East Gulf Coastal Plain Treeless Savanna and Wet Prairie	SurfaceFire	0.4000	323321	Open canopy Mid-development East Gulf Coastal Plain Treeless Savanna and Wet Prairie
323321	Open canopy Mid-development East Gulf Coastal Plain Treeless Savanna and Wet Prairie	ReplacementFire	0.0100	123311	Post replacement Early-development East Gulf Coastal Plain Treeless Savanna and Wet Prairie
323321	Open canopy Mid-development East Gulf Coastal Plain Treeless Savanna and Wet Prairie	Wind/Weather/Stress	0.0050	123311	Post replacement Early-development East Gulf Coastal Plain Treeless Savanna and Wet Prairie
323321	Open canopy Mid-development East Gulf Coastal Plain Treeless Savanna and Wet Prairie	AltSuccession	1.0000	223321	Closed canopy Mid-development East Gulf Coastal Plain Treeless Savanna and Wet Prairie
323331	Open canopy Late-development East Gulf Coastal Plain Treeless Savanna and Wet Prairie	SurfaceFire	0.3500	323331	Open canopy Late-development East Gulf Coastal Plain Treeless Savanna and Wet Prairie
323331	Open canopy Late-development East Gulf Coastal Plain Treeless Savanna and Wet Prairie	ReplacementFire	0.0010	123311	Post replacement Early-development East Gulf Coastal Plain Treeless Savanna and Wet Prairie
323331	Open canopy Late-development East Gulf Coastal Plain Treeless Savanna and Wet Prairie	Competition/Maint	0.0100	323331	Open canopy Late-development East Gulf Coastal Plain Treeless Savanna and Wet Prairie
323331	Open canopy Late-development East Gulf Coastal Plain Treeless Savanna and Wet Prairie	Wind/Weather/Stress	0.0010	123311	Post replacement Early-development East Gulf Coastal Plain Treeless Savanna and Wet Prairie
323331	Open canopy Late-development East Gulf Coastal Plain Treeless Savanna and Wet Prairie	AltSuccession	1.0000	223331	Closed canopy Late-development East Gulf Coastal Plain Treeless Savanna and Wet Prairie
324611	Open canopy Early-development Atlantic Coastal Plain Embayed Region Tidal Salt and Brackish Marsh	ReplacementFire	0.2500	324611	Open canopy Early-development Atlantic Coastal Plain Embayed Region Tidal Salt and Brackish Marsh
324621	Open canopy Mid-development Atlantic Coastal Plain Embayed Region Tidal Salt and Brackish Marsh	ReplacementFire	0.1500	324611	Open canopy Early-development Atlantic Coastal Plain Embayed Region Tidal Salt and Brackish Marsh
324622	Open canopy Mid-development Atlantic Coastal Plain Embayed Region Tidal Salt and Brackish Marsh	MixedFire	0.0700	324622	Open canopy Mid-development Atlantic Coastal Plain Embayed Region Tidal Salt and Brackish Marsh
324622	Open canopy Mid-development Atlantic Coastal Plain Embayed Region Tidal Salt and Brackish Marsh	ReplacementFire	0.0700	324611	Open canopy Early-development Atlantic Coastal Plain Embayed Region Tidal Salt and Brackish Marsh
324622	Open canopy Mid-development Atlantic Coastal Plain Embayed Region Tidal Salt and Brackish Marsh	Optional2	0.0400	324621	Open canopy Mid-development Atlantic Coastal Plain Embayed Region Tidal Salt and Brackish Marsh

<b>From State Class ID</b>	<b>From StateClass Name</b>	<b>Disturbance</b>	<b>Probability</b>	<b>To State Class ID</b>	<b>To StateClass Name</b>
324811	Open canopy Early-development Atlantic Coastal Plain Northern Tidal Salt Marsh	ReplacementFire	0.2500	324811	Open canopy Early-development Atlantic Coastal Plain Northern Tidal Salt Marsh
324821	Open canopy Mid-development Atlantic Coastal Plain Northern Tidal Salt Marsh	ReplacementFire	0.1500	324811	Open canopy Early-development Atlantic Coastal Plain Northern Tidal Salt Marsh
324822	Open canopy Mid-development Atlantic Coastal Plain Northern Tidal Salt Marsh	MixedFire	0.0700	324822	Open canopy Mid-development Atlantic Coastal Plain Northern Tidal Salt Marsh
324822	Open canopy Mid-development Atlantic Coastal Plain Northern Tidal Salt Marsh	ReplacementFire	0.0700	324811	Open canopy Early-development Atlantic Coastal Plain Northern Tidal Salt Marsh
324822	Open canopy Mid-development Atlantic Coastal Plain Northern Tidal Salt Marsh	Optional2	0.0400	324821	Open canopy Mid-development Atlantic Coastal Plain Northern Tidal Salt Marsh