

SOUTHEAST GAP ANALYSIS PROJECT



Species Modeling Report

Cattle Egret

Bubulcus ibis

Taxa: Avian

Order: Ciconiiformes

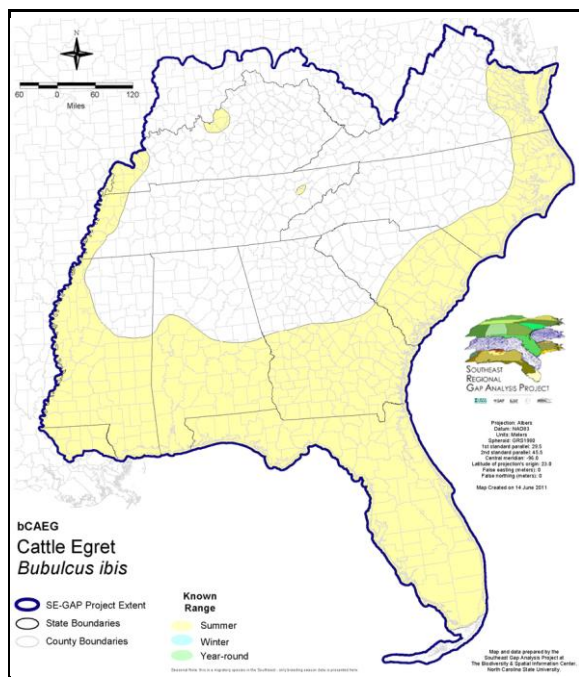
Family: Ardeidae

SE-GAP Spp Code: **bCAEG**

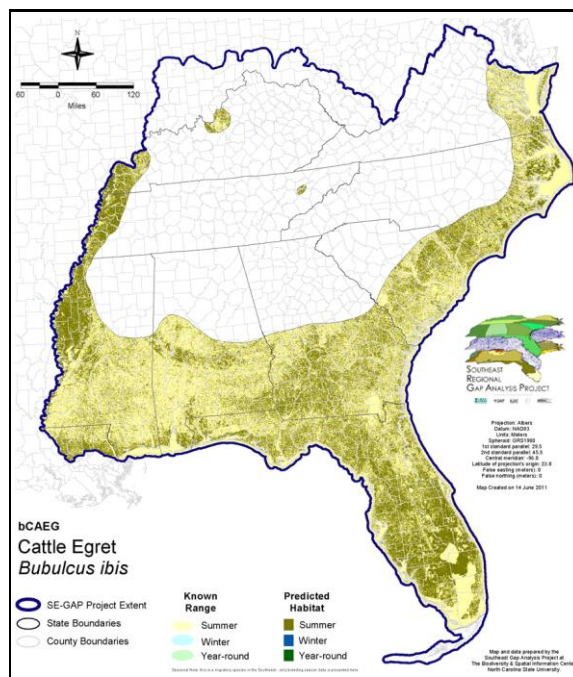
ITIS Species Code: 174803

NatureServe Element Code: ABNGA07010

KNOWN RANGE:



PREDICTED HABITAT:



Range Map Link: http://www.basic.ncsu.edu/segap/datazip/maps/SE_Range_bCAEG.pdf

Predicted Habitat Map Link: http://www.basic.ncsu.edu/segap/datazip/maps/SE_Dist_bCAEG.pdf

GAP Online Tool Link: <http://www.gapservice.ncsu.edu/segap/segap/index2.php?species=bCAEG>

Data Download: http://www.basic.ncsu.edu/segap/datazip/region/vert/bCAEG_se00.zip

PROTECTION STATUS:

Reported on March 14, 2011

Federal Status: ---

State Status: ID (P), ID (P), KY (S), NJ (SC), NV (YES), NY (PB), OH (E), RI (Concern), UT (None), WI (SC/M), WI (SC/M), BC (4 (2005)), QC (Non suivie)

NS Global Rank: G5

NS State Rank: AK (SNA), AL (S3N,S5B), AR (S4N,S5B), AZ (S1B,S4N), CA (SNRB,SNRN), CO (S4B), CO (S4B), CT (S1B), CT (S1B), DE (S1B), FL (SNR), GA (S5), IA (S4N), ID (S2B), ID (S2B), IL (S3S4), IN (SNA), KS (S3B), KS (S3B), KY (S1S2B), LA (S4N,S5B), MA (S1B,S3N), MD (S3S4B), ME (S1B), MI (SNRN), MN (SNRB), MO (SNA), MS (S5B,S5N), MT (SNA), NC (S4B), NC (S4B), ND (S4), NE (SNRN), NH (SNA), NJ (S3B,S3N), NM (S3B,S4N), NV (S5), NY (S2), OH (S1), OK (SNA), OR (SU), PA (SNA), RI (S1B,S3N), SC (SNRB,SNRN), SD (S4B), SD (S4B), TN (S2B,S3N), TX (SNA), UT (S4B), VA (SNA), VT (S1B,S1S2N), WA (SNA), WI (S1B), WI (S1B), WV (SNA), WY (SNA), AB (SNA), BC (SNRN), MB (S1S2B), MB (S1S2B), NB (SNA), NF (SNA), NS (SNA), ON (SNA), PE (SNA), QC (SNA), SK (SNA), SK (SNA)

SUMMARY OF PREDICTED HABITAT BY MANAGMENT AND GAP PROTECTION STATUS:

	US FWS		US Forest Service		Tenn. Valley Author.		US DOD/ACOE	
	ha	%	ha	%	ha	%	ha	%
Status 1	43,614.0	< 1	878.8	< 1	0.0	0	0.0	0
Status 2	102,418.4	< 1	17,611.2	< 1	0.0	0	55.9	< 1
Status 3	480.4	< 1	208,592.8	< 1	564.8	< 1	183,645.9	< 1
Status 4	19.0	< 1	< 0.1	< 1	0.0	0	173.9	< 1
Total	146,531.8	< 1	227,082.9	1	564.8	< 1	183,875.7	< 1
	US Dept. of Energy		US Nat. Park Service		NOAA		Other Federal Lands	
	ha	%	ha	%	ha	%	ha	%
Status 1	0.0	0	26,439.1	< 1	9.5	< 1	7,866.2	< 1
Status 2	0.0	0	6,217.5	< 1	4,484.9	< 1	67.8	< 1
Status 3	2,912.6	< 1	145,938.4	< 1	0.0	0	5,540.4	< 1
Status 4	0.0	0	0.0	0	0.0	0	0.0	0
Total	2,912.6	< 1	178,595.0	< 1	4,494.4	< 1	13,474.4	< 1
	Native Am. Reserv.		State Park/Hist. Park		State WMA/Gameland		State Forest	
	ha	%	ha	%	ha	%	ha	%
Status 1	0.0	0	73.2	< 1	0.0	0	0.0	0
Status 2	0.0	0	251.3	< 1	230,178.6	1	0.0	0
Status 3	1,654.7	< 1	405,235.4	2	40,835.7	< 1	167,516.0	< 1
Status 4	0.0	0	< 0.1	< 1	4,347.1	< 1	0.9	< 1
Total	1,654.7	< 1	405,559.9	2	275,361.4	1	167,516.9	< 1
	State Coastal Reserve		ST Nat.Area/Preserve		Other State Lands		Private Cons. Easemt.	
	ha	%	ha	%	ha	%	ha	%
Status 1	0.0	0	1,127.7	< 1	0.0	0	0.0	0
Status 2	7,373.0	< 1	15,776.7	< 1	0.0	0	2,064.0	< 1
Status 3	0.0	0	18,354.7	< 1	12,519.5	< 1	103,402.7	< 1
Status 4	0.0	0	0.0	0	1,355.3	< 1	< 0.1	< 1
Total	7,373.0	< 1	35,259.1	< 1	13,874.8	< 1	105,466.8	< 1
	Private Land - No Res.		Water		Overall Total			
	ha	%	ha	%	ha %			
Status 1	0.0	0	0.0	0	80,008.5 < 1			
Status 2	0.0	0	0.0	0	386,499.2 2			
Status 3	350.0	< 1	1.0	< 1	1,297,545.0 7			
Status 4	18,964,663.7	90	30,733.7	< 1	19,005,621.8 91			
Total	18,965,013.7	90	30,734.6	< 1	20,769,674.5 100			

GAP Status 1: An area having permanent protection from conversion of natural land cover and a mandated management plan in operation to maintain a natural state within which disturbance events (of natural type, frequency, and intensity) are allowed to proceed without interference or are mimicked through management.

GAP Status 2: An area having permanent protection from conversion of natural land cover and a mandated management plan in operation to maintain a primarily natural state, but which may receive use or management practices that degrade the quality of existing natural communities.

GAP Status 3: An area having permanent protection from conversion of natural land cover for the majority of the area, but subject to extractive uses of either a broad, low-intensity type or localized intense type. It also confers protection to federally listed endangered and threatened species throughout the area.

GAP Status 4: Lack of irrevocable easement or mandate to prevent conversion of natural habitat types to anthropogenic habitat types. Allows for intensive use throughout the tract. Also includes those tracts for which the existence of such restrictions or sufficient information to establish a higher status is unknown.

PREDICTED HABITAT MODEL(S):

Summer Model:

Habitat Description: Nests in heronries established by other ardeid species in thickets or inland swamps and coastal islands. Heronries are typically of four basic types 1) small tracts of isolated upland woods or motts, 2) inland wooded islands in reservoirs, 3) swamps, and 4) natural and dredge-material created coastal islands. Forage in pastures, roadside areas, and short grass areas near water often associated with livestock, cattle in particular. M. Rubino, 17nov04.

Selected Map Units:

Functional Group	Map Unit Name
Anthropogenic	Developed Open Space
Anthropogenic	Low Intensity Developed
Anthropogenic	Pasture/Hay
Anthropogenic	Row Crop
Anthropogenic	Successional Grassland/Herbaceous
Anthropogenic	Successional Grassland/Herbaceous (Other)
Anthropogenic	Successional Grassland/Herbaceous (Utility Swath)
Water	Open Water (Aquaculture)
Wetlands	Atlantic Coastal Plain Blackwater Stream Floodplain Forest - Herbaceous Modifier
Wetlands	Atlantic Coastal Plain Clay-Based Carolina Bay Forested Wetland
Wetlands	Atlantic Coastal Plain Clay-Based Carolina Bay Herbaceous Wetland
Wetlands	Atlantic Coastal Plain Northern Wet Longleaf Pine Savanna and Flatwoods
Wetlands	Atlantic Coastal Plain Peatland Pocosin
Wetlands	Atlantic Coastal Plain Sandhill Seep
Wetlands	Atlantic Coastal Plain Southern Wet Pine Savanna and Flatwoods
Wetlands	Central Florida Herbaceous Pondshore
Wetlands	Central Florida Herbaceous Seep
Wetlands	Central Florida Pine Flatwoods
Wetlands	Central Interior Highlands and Appalachian Sinkhole and Depression Pond
Wetlands	East Gulf Coastal Plain Interior Shrub Bog
Wetlands	East Gulf Coastal Plain Large River Floodplain Forest - Herbaceous Modifier
Wetlands	East Gulf Coastal Plain Near-Coast Pine Flatwoods - Open Understory Modifier
Wetlands	East Gulf Coastal Plain Near-Coast Pine Flatwoods - Scrub/Shrub Understory Modifier
Wetlands	East Gulf Coastal Plain Treeless Savanna and Wet Prairie
Wetlands	Floridian Highlands Freshwater Marsh
Wetlands	Lower Mississippi River Bottomland Depressions - Herbaceous Modifier
Wetlands	South Florida Bayhead Swamp
Wetlands	South Florida Cypress Dome
Wetlands	South Florida Dwarf Cypress Savanna
Wetlands	South Florida Pine Flatwoods
Wetlands	South Florida Wet Marl Prairie
Wetlands	South Florida Willow Head
Wetlands	Southern Coastal Plain Herbaceous Seepage Bog
Wetlands	Southern Coastal Plain Hydric Hammock
Wetlands	Southern Coastal Plain Nonriverine Cypress Dome

CITATIONS: American Ornithologists' Union (AOU), Committee on Classification and Nomenclature. 1983. Check-list of North American Birds. Sixth Edition. American Ornithologists' Union, Allen Press, Inc., Lawrence, Kansas.

Bock, C. E., and L. W. Lepthien. 1976. Population growth in the cattle egret. Auk 93:164-166.

Droege, S., and J.R. Sauer. 1990. North American Breeding Bird Survey, annual summary, 1989. U.S. Fish and Wildlife Service, Biological Report 90(8). 22 pp.

Ehrlich, P.R., D.S. Dobkin, and D. Wheye. 1988. The birder's handbook: a field guide to the natural history of North American birds. Simon and Shuster, Inc., New York. xxx + 785 pp.

- Fussell, J.O. III. 1994. A birder's guide to coastal North Carolina. Chapel Hill and London: The University of North Carolina Press.
- Harrison, H.H. 1979. A field guide to western birds' nests. Houghton Mifflin Company, Boston. 279 pp.
- Kaufman K. 1996. Lives of North American Birds. Boston, New York: Houghton Mifflin Company.
- Palmer, R. S. (editor). 1962. Handbook of North American birds. Vol. 1. Loons through flamingos. Yale University Press, New Haven. 567 pp.
- Payne, R. B., and C. J. Risley. 1976. Systematics and evolutionary relationships among the herons (Ardeidae). Univ. Michigan Mus. Zool., Misc. Publ. No. 150. 115 pp.
- Pratt, H.D., P.L. Bruner, and D.G. Berrett. 1987. A field guide to the birds of Hawaii and the tropical Pacific. Princeton University Press, Princeton, New Jersey. 409 pp. + 45 plates.
- Raffaele, H.A. 1983. A guide to the birds of Puerto Rico and the Virgin Islands. Fondo Educativo Interamericano, San Juan, Puerto Rico. 255 pp.
- Root, T. 1988. Atlas of wintering North American birds: An analysis of Christmas Bird Count data. University of Chicago Press. 336 pp.
- Shallenberger, R. J., editor. 1984. Hawaii's birds. Third edition. Hawaii Audubon Society, Honolulu.
- Siegfried, W.R. 1978. Habitat and the modern range expansion of the cattle egret. Wading Birds, National Audubon Society Research Report, No. 7.
- Simpson MB Jr. 1992. Birds of the Blue Ridge Mountains. Chapel Hill and London: University of North Carolina Press.
- Spendlow, J.A., and S.R. Patton. 1988. National atlas of coastal waterbird colonies in the contiguous United States: 1976-1982. U.S. Fish and Wildlife Service, Biological Report 88(5). x + 326 pp.
- Stiles, F.G., and A.F. Skutch. 1989. A guide to the birds of Costa Rica. Comstock Publ. Associates, Cornell University Press, Ithaca, New York. 511 pp.
- Telfair, R. C. 1983. The cattle egret, a Texas focus and world view. Texas A & M Univ. Press. 144 pp.
- Telfair, R.C. II. 1983. The cattle egret: a Texas focus and world view. Texas Agricultural Experiment Station. (College Station).
- Terres, J.K. 1980. The Audubon Society encyclopedia of North American birds. Alfred A. Knopf, New York.

For more information:: SE-GAP Analysis Project / BaSIC
 127 David Clark Labs
 Dept. of Biology, NCSU
 Raleigh, NC 27695-7617
 (919) 513-2853
www.basic.ncsu.edu/segap

Compiled: 15 September 2011

This data was compiled and/or developed by the Southeast GAP Analysis Project at The Biodiversity and Spatial Information Center, North Carolina State University.