

# SOUTHEAST GAP ANALYSIS PROJECT



## Species Modeling Report

### Green-winged Teal

*Anas crecca*

Taxa: Avian

Order: Anseriformes

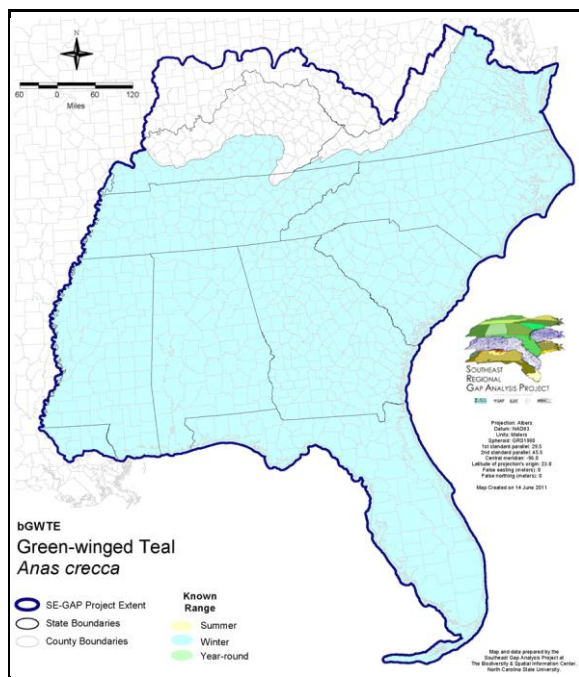
Family: Anatidae

SE-GAP Spp Code: **bgWTE**

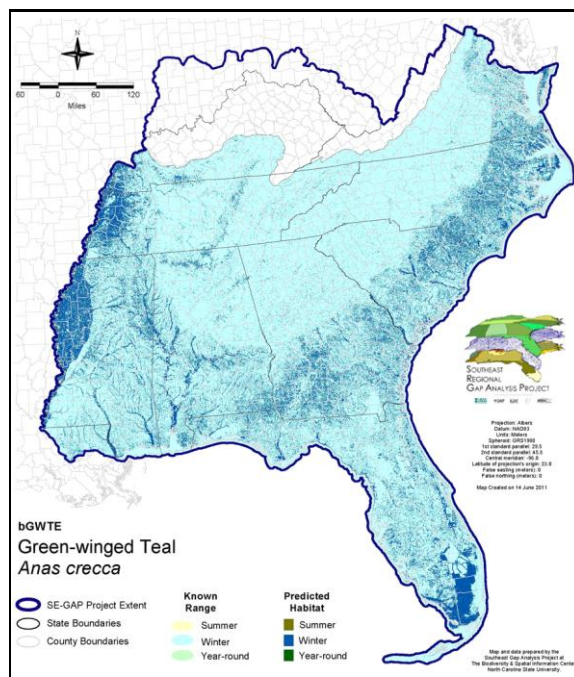
ITIS Species Code: 175081

NatureServe Element Code: ABNJB10010

#### KNOWN RANGE:



#### PREDICTED HABITAT:



Range Map Link: [http://www.basic.ncsu.edu/segap/datazip/maps/SE\\_Range\\_bgWTE.pdf](http://www.basic.ncsu.edu/segap/datazip/maps/SE_Range_bgWTE.pdf)

Predicted Habitat Map Link: [http://www.basic.ncsu.edu/segap/datazip/maps/SE\\_Dist\\_bgWTE.pdf](http://www.basic.ncsu.edu/segap/datazip/maps/SE_Dist_bgWTE.pdf)

GAP Online Tool Link: <http://www.gapservice.ncsu.edu/segap/segap/index2.php?species=bgWTE>

Data Download: [http://www.basic.ncsu.edu/segap/datazip/region/vert/bgWTE\\_se00.zip](http://www.basic.ncsu.edu/segap/datazip/region/vert/bgWTE_se00.zip)

#### PROTECTION STATUS:

Reported on March 14, 2011

Federal Status: ---

State Status: AL (GB), ID (G), KY (N), NV (YES), NY (PB - GS), OH (SI), RI (Concern), UT (None), BC (4 (2005)), QC (Non suivie)

NS Global Rank: G5

NS State Rank: AK (S5B,S4N), AL (S5N), AR (S4N), AZ (S3B,S5N), CA (SNRB,SNRN), CO (S5B,S4N), CT (SNA), DC (S2N), DE (S4N), FL (SNRN), GA (S5), HI (SNA), IA (S2B,S5N), ID (S4B,S4N), IL (SNA), IN (S1B,S1N), KS (S1B,S5N), KY (S4N), LA (S5N), MA (S2B,S5M), MD (S4N), ME (S5B), MI (S3), MN (SNRB), MO (SNRN), MS (S4N), MT (S5B), MT (S5B), NC (S5N), ND (SNRB), NE (S3S4), NH (S3B), NH (S3B), NJ (SNRB), NJ (SNRB), NM (S4B,S5N), NV (S4B,S5N), NY (S3), OH (SNA), OK (S5N), OR (S5), PA (S1S2B,S3N), RI (S1B,S4N), SC (SNRN), SD (S4B), SD (S4B), TN (S4N), TX (S2B,S5N), UT (S3B,S5N), VA (SU), VT (S2B,S5N), WA (S4B,S3N), WI (S3B), WI (S3B), WV (SHB,S2N), WV (SHB,S2N), WY (S5B,S5N), AB (S5), BC (S5B,S5N), LB (S5B), MB (S5B), MB (S5B), NB (S5B), NF (S5B), NS (S5B), NT (SNRB), NU (SNRB), ON (S4), ON (S4), PE (S5B,S5N), QC (S5B), SK (S5B,S5M,S2N), YT (S5B)



## SUMMARY OF PREDICTED HABITAT BY MANAGMENT AND GAP PROTECTION STATUS:

	US FWS		US Forest Service		Tenn. Valley Author.		US DOD/ACOE	
	ha	%	ha	%	ha	%	ha	%
Status 1	107,659.9	< 1	2,934.7	< 1	0.0	0	0.0	0
Status 2	190,845.5	< 1	20,116.7	< 1	0.0	0	1,753.1	< 1
Status 3	1,764.1	< 1	210,327.5	1	8,615.0	< 1	124,027.3	< 1
Status 4	24.3	< 1	0.0	0	0.0	0	17.8	< 1
Total	300,293.8	2	233,378.9	1	8,615.0	< 1	125,798.2	< 1
	US Dept. of Energy		US Nat. Park Service		NOAA		Other Federal Lands	
	ha	%	ha	%	ha	%	ha	%
Status 1	0.0	0	374,975.7	2	993.3	< 1	6,878.3	< 1
Status 2	0.0	0	25,686.9	< 1	40,414.8	< 1	28.4	< 1
Status 3	16,415.2	< 1	138,859.4	< 1	0.0	0	1,334.2	< 1
Status 4	0.0	0	2.0	< 1	0.0	0	0.0	0
Total	16,415.2	< 1	539,524.9	3	41,408.1	< 1	8,240.9	< 1
	Native Am. Reserv.		State Park/Hist. Park		State WMA/Gameland		State Forest	
	ha	%	ha	%	ha	%	ha	%
Status 1	0.0	0	164.3	< 1	5.5	< 1	0.0	0
Status 2	0.0	0	1,092.9	< 1	644,973.2	3	24.2	< 1
Status 3	2,168.3	< 1	370,220.4	2	100,513.3	< 1	89,224.9	< 1
Status 4	0.0	0	0.0	0	10,098.9	< 1	5.1	< 1
Total	2,168.3	< 1	371,477.5	2	755,590.9	4	89,254.3	< 1
	State Coastal Reserve		ST Nat.Area/Preserve		Other State Lands		Private Cons. Easemt.	
	ha	%	ha	%	ha	%	ha	%
Status 1	0.0	0	2,309.2	< 1	0.0	0	0.0	0
Status 2	33,242.5	< 1	54,164.2	< 1	2.3	< 1	1,170.5	< 1
Status 3	0.0	0	9,402.3	< 1	5,278.7	< 1	54,905.2	< 1
Status 4	0.0	0	0.0	0	1,600.2	< 1	0.0	0
Total	33,242.5	< 1	65,875.7	< 1	6,881.1	< 1	56,075.7	< 1
	Private Land - No Res.		Water		Overall Total			
	ha	%	ha	%				
Status 1	0.0	9	0.0	0	495,921.2 3			
Status 2	0.8	< 1	0.0	9	1,013,516.0 5			
Status 3	517.1	< 1	< 0.1	< 1	1,133,572.8 7			
Status 4	16,659,557.8	85	76,904.9	< 1	16,758,286.6 85			
Total	16,660,075.9	85	76,905.2	< 1	19,401,296.5 100			

GAP Status 1: An area having permanent protection from conversion of natural land cover and a mandated management plan in operation to maintain a natural state within which disturbance events (of natural type, frequency, and intensity) are allowed to proceed without interference or are mimicked through management.

GAP Status 2: An area having permanent protection from conversion of natural land cover and a mandated management plan in operation to maintain a primarily natural state, but which may receive use or management practices that degrade the quality of existing natural communities.

GAP Status 3: An area having permanent protection from conversion of natural land cover for the majority of the area, but subject to extractive uses of either a broad, low-intensity type or localized intense type. It also confers protection to federally listed endangered and threatened species throughout the area.

GAP Status 4: Lack of irrevocable easement or mandate to prevent conversion of natural habitat types to anthropogenic habitat types. Allows for intensive use throughout the tract. Also includes those tracts for which the existence of such restrictions or sufficient information to establish a higher status is unknown.

## PREDICTED HABITAT MODEL(S):

### Winter Model:

Habitat Description: Green-winged teal can be found in various shallow wetlands during the winters months (Johnson 1995). They typically inhabit coastal marshes, riparian areas, river backwaters, forested wetlands and agricultural fields (Bellrose 1980, Johnson 1995, Turcotte & Watts 1999). In addition this species will also utilize brackish estuaries but generally avoids open salt water (Johnson 1995). Amy Silvano 01Sept05

Ecosystem Classifiers: Primarily Aquatic. Coastal, Brackish, & Freshwater Marshes and Wetlands, Depressional, lakes/River/Pondshore, Floodplain/Riparian as PMU's. Ag Fields as AMU. Amy Silvano 01sept05

Customized Model: Do not restrict AG Fields to within hydro buffer. Amy Silvano 01Sept05

#### Hydrography Mask:

Utilizes flowing water features with buffers of 30m from and 60m into selected water features.

Utilizes open water features with buffers of 30m from and 60m into selected water features.

Utilizes wet vegetation features with buffers of 30m from and unlimited into selected vegetation features.

#### Selected Map Units:

Functional Group	Map Unit Name
Brackish Tidal Marsh & Wetland	Atlantic Coastal Plain Central Salt and Brackish Tidal Marsh
Brackish Tidal Marsh & Wetland	Atlantic Coastal Plain Embayed Region Tidal Salt and Brackish Marsh
Brackish Tidal Marsh & Wetland	Atlantic Coastal Plain Indian River Lagoon Tidal Marsh
Brackish Tidal Marsh & Wetland	Atlantic Coastal Plain Northern Sea-Level Fen
Brackish Tidal Marsh & Wetland	Atlantic Coastal Plain Northern Tidal Salt Marsh
Brackish Tidal Marsh & Wetland	Atlantic Coastal Plain Northern Tidal Wooded Swamp
Brackish Tidal Marsh & Wetland	Atlantic Coastal Plain Southern Tidal Wooded Swamp
Brackish Tidal Marsh & Wetland	East Gulf Coastal Plain Tidal Wooded Swamp
Brackish Tidal Marsh & Wetland	Florida Big Bend Salt-Brackish Tidal Marsh
Brackish Tidal Marsh & Wetland	Mississippi Sound Salt and Brackish Tidal Marsh
Brackish Tidal Marsh & Wetland	South Florida Everglades Sawgrass Marsh
Brackish Tidal Marsh & Wetland	South Florida Mangrove Swamp
Brackish Tidal Marsh & Wetland	Southwest Florida Perched Barriers Salt Swamp and Lagoon - Mangrove Modifier
Brackish Tidal Marsh & Wetland	Southwest Florida Perched Barriers Salt Swamp and Lagoon - Marsh Modifier
Coastal Dune & Freshwater Wetland	Atlantic and Gulf Coastal Plain Interdunal Wetland
Freshwater Tidal Marsh & Wetland	Atlantic Coastal Plain Central Fresh-Oligohaline Tidal Marsh
Freshwater Tidal Marsh & Wetland	Atlantic Coastal Plain Embayed Region Tidal Freshwater Marsh
Freshwater Tidal Marsh & Wetland	Atlantic Coastal Plain Northern Fresh and Oligohaline Tidal Marsh
Freshwater Tidal Marsh & Wetland	Florida Big Bend Fresh-Oligohaline Tidal Marsh
Water	Open Water (Brackish/Salt)
Water	Open Water (Fresh)
Wetlands	Atlantic Coastal Plain Blackwater Stream Floodplain Forest - Forest Modifier
Wetlands	Atlantic Coastal Plain Blackwater Stream Floodplain Forest - Herbaceous Modifier
Wetlands	Atlantic Coastal Plain Brownwater Stream Floodplain Forest
Wetlands	Atlantic Coastal Plain Clay-Based Carolina Bay Forested Wetland
Wetlands	Atlantic Coastal Plain Clay-Based Carolina Bay Herbaceous Wetland
Wetlands	Atlantic Coastal Plain Depression Pondshore
Wetlands	Atlantic Coastal Plain Large Natural Lakeshore
Wetlands	Atlantic Coastal Plain Northern Basin Swamp and Wet Hardwood Forest
Wetlands	Atlantic Coastal Plain Northern Pondshore
Wetlands	Atlantic Coastal Plain Peatland Pocosin
Wetlands	Atlantic Coastal Plain Sandhill Seep
Wetlands	Atlantic Coastal Plain Small Blackwater River Floodplain Forest
Wetlands	Atlantic Coastal Plain Small Brownwater River Floodplain Forest
Wetlands	Atlantic Coastal Plain Streamhead Seepage Swamp, Pocosin, and Baygall
Wetlands	Atlantic Coastal Plain Xeric River Dune

Wetlands	Central Appalachian Floodplain - Forest Modifier
Wetlands	Central Appalachian Floodplain - Herbaceous Modifier
Wetlands	Central Appalachian Riparian - Forest Modifier
Wetlands	Central Appalachian Riparian - Herbaceous Modifier
Wetlands	Central Florida Herbaceous Pondshore
Wetlands	Central Florida Herbaceous Seep
Wetlands	East Gulf Coastal Plain Large River Floodplain Forest - Forest Modifier
Wetlands	East Gulf Coastal Plain Large River Floodplain Forest - Herbaceous Modifier
Wetlands	East Gulf Coastal Plain Northern Depression Pondshore
Wetlands	East Gulf Coastal Plain Northern Seepage Swamp
Wetlands	East Gulf Coastal Plain Small Stream and River Floodplain Forest
Wetlands	East Gulf Coastal Plain Southern Depression Pondshore
Wetlands	Floridian Highlands Freshwater Marsh
Wetlands	Lower Mississippi River Bottomland and Floodplain Forest
Wetlands	Lower Mississippi River Bottomland Depressions - Forest Modifier
Wetlands	Lower Mississippi River Bottomland Depressions - Herbaceous Modifier
Wetlands	Mississippi River Low Floodplain (Bottomland) Forest
Wetlands	Mississippi River Riparian Forest
Wetlands	South Florida Freshwater Slough and Gator Hole
Wetlands	South Florida Pond-Apple/Popash Slough
Wetlands	South Florida Wet Marl Prairie
Wetlands	South-Central Interior Large Floodplain - Forest Modifier
Wetlands	South-Central Interior Large Floodplain - Herbaceous Modifier
Wetlands	South-Central Interior Small Stream and Riparian
Wetlands	Southern Appalachian Seepage Wetland
Wetlands	Southern Coastal Plain Blackwater River Floodplain Forest
Wetlands	Southern Coastal Plain Herbaceous Seepage Bog
Wetlands	Southern Coastal Plain Nonriverine Basin Swamp
Wetlands	Southern Coastal Plain Seepage Swamp and Baygall
Wetlands	Southern Coastal Plain Spring-run Stream Aquatic Vegetation
Wetlands	Southern Piedmont Large Floodplain Forest - Forest Modifier
Wetlands	Southern Piedmont Large Floodplain Forest - Herbaceous Modifier
Wetlands	Southern Piedmont Seepage Wetland
Wetlands	Southern Piedmont Small Floodplain and Riparian Forest
Wetlands	Southern Piedmont/Ridge and Valley Upland Depression Swamp
Wetlands	Western Highland Rim Seepage Fen

Selected Secondary Map Units within 1000m of Primary Map Units:	
Functional Group	Map Unit Name
Anthropogenic	Row Crop

**CITATIONS:** American Ornithologists' Union (AOU), Committee on Classification and Nomenclature. 1983. Check-list of North American Birds. Sixth Edition. American Ornithologists' Union, Allen Press, Inc., Lawrence, Kansas.

Godfrey, W.E. 1966. The birds of Canada. National Museums of Canada. Ottawa. 428 pp.

Harrison, C. 1978. A field guide to the nests, eggs and nestlings of North American birds. Collins, Cleveland, Ohio.

Jackson, G. D. 1991. Field identification of teal in North America:female-like plumages. Part I:blue-winged, cinnamon, and green-winged teal. *Birding* 23(3):124-133.

Johnson, S.R., and D.R. Herter. 1989. The birds of the Beaufort Sea. BP Exploration (Alaska) Inc., Anchorage, Alaska. 372 pp.

Livezey, B. C. 1991. A phylogenetic analysis and classification of recent dabbling ducks (tribe Anatini) based on comparative morphology. *Auk* 108:471-507.

Moisan, G., R. I. Smith, and R. K. Martinson. 1967. The green-winged teal:its distribution, migration, and population dynamics. U.S. Fish and Wildl. Serv., Spec. Sci. Rep., Wildlife No. 100. 248 pp.

Pratt, H.D., P.L. Bruner, and D.G. Berrett. 1987. A field guide to the birds of Hawaii and the tropical Pacific. Princeton University Press, Princeton, New Jersey. 409 pp. + 45 plates.

- Raffaele, H.A. 1983. A guide to the birds of Puerto Rico and the Virgin Islands. Fondo Educativo Interamericano, San Juan, Puerto Rico. 255 pp.
- Root, T. 1988. Atlas of wintering North American birds:An analysis of Christmas Bird Count data. University of Chicago Press. 336 pp.
- Terres, J.K. 1980. The Audubon Society encyclopedia of North American birds. Alfred A. Knopf, New York.
- Zink, R. M., S. Rohwer, A. V. Andreev, and D. L. Dittman. 1995. Trans-Beringia comparisons of mitochondrial DNA differentiation in birds. Condor 97:639-649.

---

For more information:: SE-GAP Analysis Project / BaSIC  
127 David Clark Labs  
Dept. of Biology, NCSU  
Raleigh, NC 27695-7617  
(919) 513-2853  
[www.basic.ncsu.edu/segap](http://www.basic.ncsu.edu/segap)

Compiled: 15 September 2011

This data was compiled and/or developed  
by the Southeast GAP Analysis Project at  
The Biodiversity and Spatial Information  
Center, North Carolina State University.