

# SOUTHEAST GAP ANALYSIS PROJECT



## Species Modeling Report

### Island Glass Lizard

*Ophisaurus compressus*

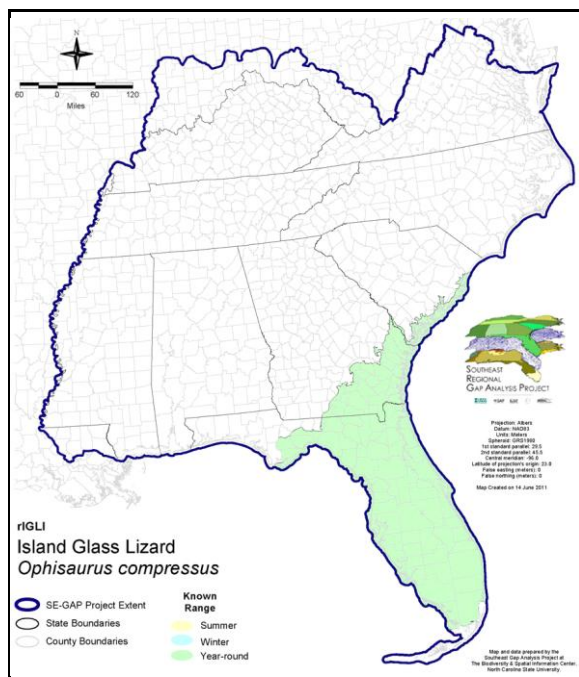
Taxa: Reptilian  
Order: Squamata  
Family: Anguidae

SE-GAP Spp Code: **rIGLI**

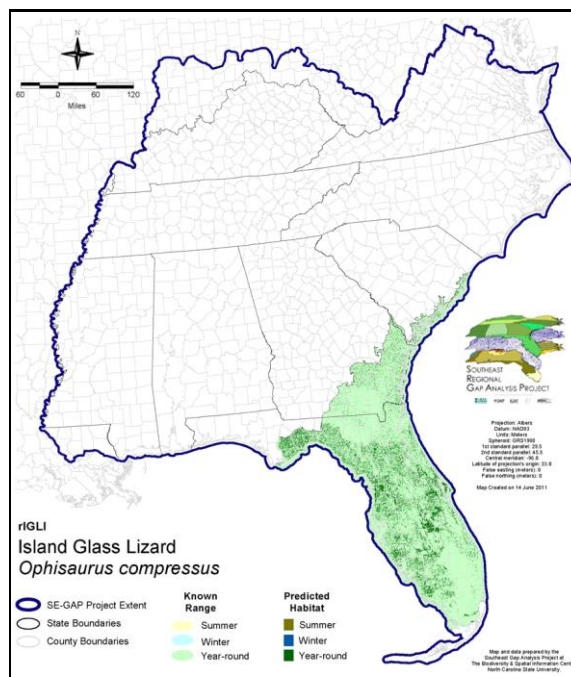
ITIS Species Code: 174109

NatureServe Element Code: ARACB02020

#### KNOWN RANGE:



#### PREDICTED HABITAT:



Range Map Link: [http://www.basic.ncsu.edu/segap/datazip/maps/SE\\_Range\\_rIGLI.pdf](http://www.basic.ncsu.edu/segap/datazip/maps/SE_Range_rIGLI.pdf)

Predicted Habitat Map Link: [http://www.basic.ncsu.edu/segap/datazip/maps/SE\\_Dist\\_rIGLI.pdf](http://www.basic.ncsu.edu/segap/datazip/maps/SE_Dist_rIGLI.pdf)

GAP Online Tool Link: <http://www.gapservice.ncsu.edu/segap/segap/index2.php?species=rIGLI>

Data Download: [http://www.basic.ncsu.edu/segap/datazip/region/vert/rIGLI\\_se00.zip](http://www.basic.ncsu.edu/segap/datazip/region/vert/rIGLI_se00.zip)

#### PROTECTION STATUS:

Reported on March 14, 2011

Federal Status: ---

State Status: ---

NS Global Rank: G3G4

NS State Rank: FL (SNR), GA (S2), SC (S1S2)

## SUMMARY OF PREDICTED HABITAT BY MANAGMENT AND GAP PROTECTION STATUS:

	US FWS		US Forest Service		Tenn. Valley Author.		US DOD/ACOE	
	ha	%	ha	%	ha	%	ha	%
Status 1	11,962.2	< 1	10.1	< 1	0.0	0	0.0	0
Status 2	12,104.1	< 1	12,488.8	< 1	0.0	0	0.0	0
Status 3	0.3	< 1	138,775.7	5	0.0	0	56,227.1	2
Status 4	0.0	0	< 0.1	< 1	0.0	0	0.0	0
Total	24,066.5	< 1	151,274.6	6	0.0	0	56,227.1	2
	US Dept. of Energy		US Nat. Park Service		NOAA		Other Federal Lands	
	ha	%	ha	%	ha	%	ha	%
Status 1	0.0	0	10,212.1	< 1	56.9	< 1	13,494.4	< 1
Status 2	0.0	0	7,072.4	< 1	3,670.1	< 1	5.4	< 1
Status 3	0.0	0	38,629.1	1	0.0	0	0.0	0
Status 4	0.0	0	0.0	0	0.0	0	0.0	0
Total	0.0	0	55,913.6	2	3,727.0	< 1	13,499.8	< 1
	Native Am. Reserv.		State Park/Hist. Park		State WMA/Gameland		State Forest	
	ha	%	ha	%	ha	%	ha	%
Status 1	0.0	0	0.0	0	0.0	0	0.0	0
Status 2	0.0	0	112.9	< 1	96,372.7	4	0.0	0
Status 3	0.0	0	177,209.8	7	206.3	< 1	107,269.2	4
Status 4	0.0	0	0.0	0	0.0	0	0.0	0
Total	0.0	0	177,322.7	7	96,579.0	4	107,269.2	4
	State Coastal Reserve		ST Nat.Area/Preserve		Other State Lands		Private Cons. Easemt.	
	ha	%	ha	%	ha	%	ha	%
Status 1	0.0	0	0.0	0	0.0	0	0.0	0
Status 2	151.6	< 1	3,799.6	< 1	0.0	0	1,164.5	< 1
Status 3	0.0	0	9,467.0	< 1	4,841.0	< 1	41,915.1	2
Status 4	0.0	0	0.0	0	110.0	< 1	0.0	0
Total	151.6	< 1	13,266.6	< 1	4,951.0	< 1	43,079.6	2
	Private Land - No Res.		Water		Overall Total			
	ha	%	ha	%	ha %			
Status 1	0.0	0	0.0	0	35,735.7 1			
Status 2	0.0	0	0.0	0	136,942.0 5			
Status 3	7.1	< 1	0.0	0	574,547.6 27			
Status 4	1,738,326.1	66	4,480.9	< 1	1,742,917.1 66			
Total	1,738,333.2	66	4,480.9	< 1	2,490,142.3 100			

GAP Status 1: An area having permanent protection from conversion of natural land cover and a mandated management plan in operation to maintain a natural state within which disturbance events (of natural type, frequency, and intensity) are allowed to proceed without interference or are mimicked through management.

GAP Status 2: An area having permanent protection from conversion of natural land cover and a mandated management plan in operation to maintain a primarily natural state, but which may receive use or management practices that degrade the quality of existing natural communities.

GAP Status 3: An area having permanent protection from conversion of natural land cover for the majority of the area, but subject to extractive uses of either a broad, low-intensity type or localized intense type. It also confers protection to federally listed endangered and threatened species throughout the area.

GAP Status 4: Lack of irrevocable easement or mandate to prevent conversion of natural habitat types to anthropogenic habitat types. Allows for intensive use throughout the tract. Also includes those tracts for which the existence of such restrictions or sufficient information to establish a higher status is unknown.

## PREDICTED HABITAT MODEL(S):

### Year-round Model:

Habitat Description: These lizards are found in xeric habitats in coastal pine and maritime forests. Also, scrub vegetation on old coastal sand dunes, often under tidal wrack; sand pine scrub, longleaf pine-turkey oak, coastal hammocks, and dry pine flatwoods inland. Eggs are laid probably in an underground nest. In Florida, it has been found in scrub, salt marsh, pine flatwoods, and Everglades-Big Cypress marsh edge habitats. M. Rubino, 24jan05.

#### Selected Map Units:

Functional Group	Map Unit Name
Beach	Florida Panhandle Beach Vegetation
Beach	Southeast Florida Beach
Beach	Southwest Florida Beach
Coastal Dune & Freshwater Wetland	Atlantic Coastal Plain Southern Dune and Maritime Grassland
Coastal Dune & Freshwater Wetland	East Gulf Coastal Plain Dune and Coastal Grassland
Coastal Dune & Freshwater Wetland	Southwest Florida Dune and Coastal Grassland
Forest/Woodland	Atlantic Coastal Plain Central Maritime Forest
Forest/Woodland	Atlantic Coastal Plain Southern Maritime Forest
Forest/Woodland	Atlantic Coastal Plain Upland Longleaf Pine Woodland
Forest/Woodland	East Gulf Coastal Plain Maritime Forest
Forest/Woodland	Florida Longleaf Pine Sandhill - Open Understory Modifier
Forest/Woodland	Florida Longleaf Pine Sandhill - Scrub/Shrub Understory Modifier
Forest/Woodland	Florida Peninsula Inland Scrub
Forest/Woodland	South Florida Pine Rockland
Forest/Woodland	Southeast Florida Coastal Strand and Maritime Hammock
Forest/Woodland	Southern Coastal Plain Oak Dome and Hammock
Forest/Woodland	Southwest Florida Coastal Strand and Maritime Hammock
Prairie	Florida Dry Prairie
Prairie	Panhandle Florida Limestone Glade
Wetlands	Central Florida Pine Flatwoods
Wetlands	East Gulf Coastal Plain Near-Coast Pine Flatwoods - Offsite Hardwood Modifier
Wetlands	East Gulf Coastal Plain Near-Coast Pine Flatwoods - Open Understory Modifier
Wetlands	East Gulf Coastal Plain Near-Coast Pine Flatwoods - Scrub/Shrub Understory Modifier
Wetlands	East Gulf Coastal Plain Southern Loblolly-Hardwood Flatwoods
Wetlands	South Florida Hardwood Hammock
Wetlands	South Florida Pine Flatwoods
Wetlands	Southern Coastal Plain Hydric Hammock

### CITATIONS:

For more information:: SE-GAP Analysis Project / BaSIC  
127 David Clark Labs  
Dept. of Biology, NCSU  
Raleigh, NC 27695-7617  
(919) 513-2853  
[www.basic.ncsu.edu/segap](http://www.basic.ncsu.edu/segap)

Compiled: 15 September 2011

This data was compiled and/or developed  
by the Southeast GAP Analysis Project at  
The Biodiversity and Spatial Information  
Center, North Carolina State University.