

# SOUTHEAST GAP ANALYSIS PROJECT



## Species Modeling Report

### Smooth Green Snake

*Liochlorophis vernalis*

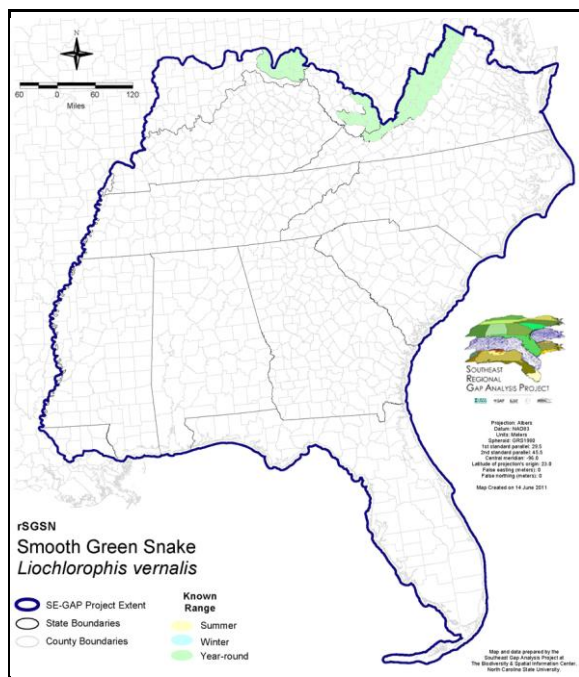
Taxa: Reptilian  
Order: Squamata  
Family: Colubridae

SE-GAP Spp Code: **rSGSN**

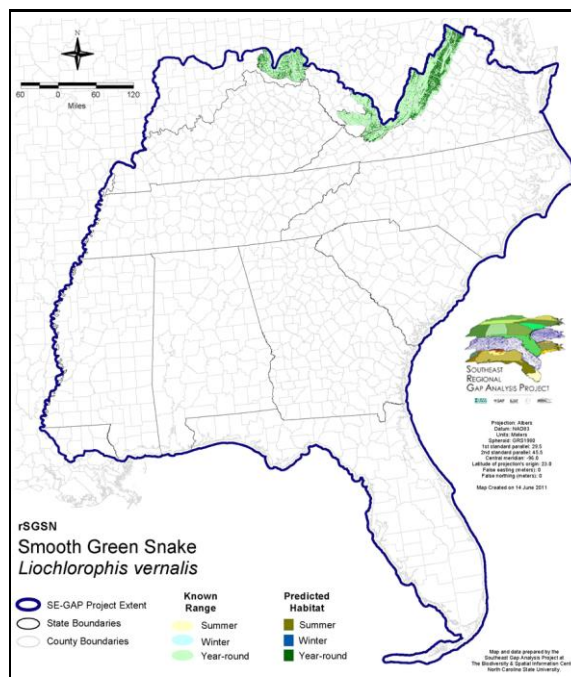
ITIS Species Code: 563910

NatureServe Element Code: ARADB47010

#### KNOWN RANGE:



#### PREDICTED HABITAT:



Range Map Link: [http://www.basic.ncsu.edu/segap/datazip/maps/SE\\_Range\\_rSGSN.pdf](http://www.basic.ncsu.edu/segap/datazip/maps/SE_Range_rSGSN.pdf)

Predicted Habitat Map Link: [http://www.basic.ncsu.edu/segap/datazip/maps/SE\\_Dist\\_rSGSN.pdf](http://www.basic.ncsu.edu/segap/datazip/maps/SE_Dist_rSGSN.pdf)

GAP Online Tool Link: <http://www.gapservice.ncsu.edu/segap/segap/index2.php?species=rSGSN>

Data Download: [http://www.basic.ncsu.edu/segap/datazip/region/vert/rSGSN\\_se00.zip](http://www.basic.ncsu.edu/segap/datazip/region/vert/rSGSN_se00.zip)

#### PROTECTION STATUS:

Reported on March 14, 2011

Federal Status: ---

State Status: CT (SC), IA (S), ID (P), IN (SE), MA (- WL), NC (W4,SC), ND (Level I), NE (NC), NH (SC), NJ (U), NY (GN), OH (SC), RI (Not Listed), TX (T), UT (SPC), QC (Susceptible)

NS Global Rank: G5

NS State Rank: CO (S4), CT (S3S4), IA (S3), ID (SH), IL (S3S4), IN (S2), KS (SNA), MA (S5), MD (S5), ME (S5), MI (S5), MN (SNR), MO (SX), MT (S2), NC (SNA), ND (SNR), NE (S1), NH (S3), NJ (S3), NM (S4), NY (S4), OH (S4), PA (S3S4), RI (S5), SD (S4), TX (S1), UT (S2), VA (S3), VT (S3), WI (S4), WV (S5), WY (S2), MB (S3S4), NB (S5), NS (S5), ON (S4), PE (S3), QC (S3S4), SK (S3)

## SUMMARY OF PREDICTED HABITAT BY MANAGMENT AND GAP PROTECTION STATUS:

	US FWS		US Forest Service		Tenn. Valley Author.		US DOD/ACOE	
	ha	%	ha	%	ha	%	ha	%
Status 1	0.0	0	17.6	< 1	0.0	0	0.0	0
Status 2	0.0	0	1,117.9	< 1	0.0	0	0.0	0
Status 3	0.0	0	6,972.8	1	0.0	0	0.0	0
Status 4	0.0	0	0.0	0	0.0	0	0.0	0
Total	0.0	0	8,108.3	2	0.0	0	0.0	0
	US Dept. of Energy		US Nat. Park Service		NOAA		Other Federal Lands	
	ha	%	ha	%	ha	%	ha	%
Status 1	0.0	0	972.1	< 1	0.0	0	0.0	0
Status 2	0.0	0	0.0	0	0.0	0	0.0	0
Status 3	0.0	0	1,539.2	< 1	0.0	0	0.0	0
Status 4	0.0	0	0.0	0	0.0	0	0.0	0
Total	0.0	0	2,511.3	< 1	0.0	0	0.0	0
	Native Am. Reserv.		State Park/Hist. Park		State WMA/Gameland		State Forest	
	ha	%	ha	%	ha	%	ha	%
Status 1	0.0	0	0.0	0	0.0	0	0.0	0
Status 2	0.0	0	0.0	0	488.1	< 1	0.0	0
Status 3	0.0	0	184.4	< 1	0.0	0	4.7	< 1
Status 4	0.0	0	0.0	0	0.0	0	0.0	0
Total	0.0	0	184.4	< 1	488.1	< 1	4.7	< 1
	State Coastal Reserve		ST Nat.Area/Preserve		Other State Lands		Private Cons. Easemt.	
	ha	%	ha	%	ha	%	ha	%
Status 1	0.0	0	0.0	0	0.0	0	0.0	0
Status 2	0.0	0	22.0	< 1	0.0	0	0.0	0
Status 3	0.0	0	0.0	0	0.0	0	0.0	0
Status 4	0.0	0	0.0	0	131.0	< 1	0.0	0
Total	0.0	0	22.0	< 1	131.0	< 1	0.0	0
	Private Land - No Res.		Water		Overall Total			
	ha	%	ha	%	ha %			
Status 1	0.0	0	0.0	0	989.7 < 1			
Status 2	0.0	0	0.0	0	1,627.9 < 1			
Status 3	0.0	0	0.0	0	8,701.0 3			
Status 4	498,072.5	96	256.0	< 1	498,459.4 96			
Total	498,072.5	96	256.0	< 1	509,778.1 100			

GAP Status 1: An area having permanent protection from conversion of natural land cover and a mandated management plan in operation to maintain a natural state within which disturbance events (of natural type, frequency, and intensity) are allowed to proceed without interference or are mimicked through management.

GAP Status 2: An area having permanent protection from conversion of natural land cover and a mandated management plan in operation to maintain a primarily natural state, but which may receive use or management practices that degrade the quality of existing natural communities.

GAP Status 3: An area having permanent protection from conversion of natural land cover for the majority of the area, but subject to extractive uses of either a broad, low-intensity type or localized intense type. It also confers protection to federally listed endangered and threatened species throughout the area.

GAP Status 4: Lack of irrevocable easement or mandate to prevent conversion of natural habitat types to anthropogenic habitat types. Allows for intensive use throughout the tract. Also includes those tracts for which the existence of such restrictions or sufficient information to establish a higher status is unknown.

## PREDICTED HABITAT MODEL(S):

### Year-round Model:

Habitat Description: Inhabits mesic habitats such as wet meadows, prairies, bog and marsh edges, and open woodlands (Wilson 1995); also abandoned farmlands, vacant lots, grassy marshes, and stream borders (NatureServe). M. Rubino, 10mar05.

#### Selected Map Units:

Functional Group	Map Unit Name
Anthropogenic	Bare Sand
Anthropogenic	Bare Soil
Anthropogenic	Developed Open Space
Anthropogenic	Low Intensity Developed
Anthropogenic	Pasture/Hay
Anthropogenic	Successional Grassland/Herbaceous
Anthropogenic	Successional Grassland/Herbaceous (Other)
Anthropogenic	Successional Grassland/Herbaceous (Utility Swath)
Forest/Woodland	Appalachian Shale Barrens
Forest/Woodland	Central Appalachian Alkaline Glade and Woodland
Forest/Woodland	Ridge and Valley Calcareous Valley Bottom Glade and Woodland
Prairie	Bluegrass Basin Savanna and Woodland
Prairie	Southern Ridge and Valley Patch Prairie
Wetlands	Central Appalachian Riparian - Herbaceous Modifier
Wetlands	Central Interior Highlands and Appalachian Sinkhole and Depression Pond
Wetlands	North-Central Appalachian Acidic Swamp
Wetlands	North-Central Appalachian Seepage Fen
Wetlands	North-Central Interior and Appalachian Rich Swamp
Wetlands	Southern and Central Appalachian Bog and Fen

- CITATIONS:** Behler, J. L., and F. W. King. 1979. The Audubon Society field guide to North American reptiles and amphibians. Alfred A. Knopf, New York. 719 pp.
- Collins, J. T. 1990. Standard common and current scientific names for North American amphibians and reptiles. SSAR Herpetol. Circular No. 19. 41 pp.
- Conant, R. and J. T. Collins. 1991. A field guide to reptiles and amphibians: eastern and central North America. Third edition. Houghton Mifflin Co., Boston, Massachusetts. 450 pp.
- DeGraaf, R. M., and D. D. Rudis. 1983. Amphibians and reptiles of New England. Habitats and natural history. Univ. Massachusetts Press. vii + 83 pp.
- Ernst, C. H., and R. W. Barbour. 1989. Snakes of eastern North America. George Mason Univ. Press, Fairfax, Virginia. 282 pp.
- Figg, D.E. 1991. Missouri Department of Conservation annual nongame and endangered species report July 1990 - June 1991. ii + 35 pp.
- Fitch, H. S. 1970. Reproductive cycles of lizards and snakes. Univ. Kansas Museum Natural History Miscellaneous Publication 52:1-247.
- Green, N. B., and T. K. Pauley. 1987. Amphibians and reptiles in West Virginia. University of Pittsburg Press, Pittsburg, Pennsylvania. xi + 241 pp.
- Grobman, A. 1992. On races, clines, and common names in OPHEODRYS. Herpetol. Rev. 23:14-15.
- Grobman, A. B. 1992. Metamerism in the snake OPHEODRYS VERNALIS, with a description of a new subspecies. J. Herpetol. 26:175-186.
- Hammerson, G. A. 1982. Amphibians and reptiles in Colorado. Colorado Division of Wildlife, Denver. vii + 131 pp.
- Minton, S. A., Jr. 1972. Amphibians and reptiles of Indiana. Indiana Academy Science Monographs 3. v + 346 pp.
- Oldham, J. C., and H. M. Smith. 1991. The generic status of the smooth green snake, OPHEODRYS VERNALIS. Bull. Maryland Herp. Soc. 27(4):201-215.
- Smith, H. M., G. A. Hammerson, J. J. Roth, and D. Chizar. 1991. Distributional addenda for the smooth green snake (OPHEODRYS VERNALIS) in western Colorado, and the status of its subspecies. Bull. Maryland Herp. Soc. 27(2):99-106.

Stebbins, R. C. 1985. A Field Guide to Western Reptiles and Amphibians. Second Edition. Houghton Mifflin Company, Boston, Massachusetts. xiv + 336 pp.

Vogt, R. G. 1981. Natural history of amphibians and reptiles of Wisconsin. Milwaukee Public Museum. 205 pp.

---

For more information:: SE-GAP Analysis Project / BaSIC  
127 David Clark Labs  
Dept. of Biology, NCSU  
Raleigh, NC 27695-7617  
(919) 513-2853  
[www.basic.ncsu.edu/segap](http://www.basic.ncsu.edu/segap)

Compiled: 15 September 2011

This data was compiled and/or developed  
by the Southeast GAP Analysis Project at  
The Biodiversity and Spatial Information  
Center, North Carolina State University.