



SOUTHEAST GAP ANALYSIS PROJECT



Species Modeling Report

Cope's Gray Treefrog

Hyla chrysoscelis

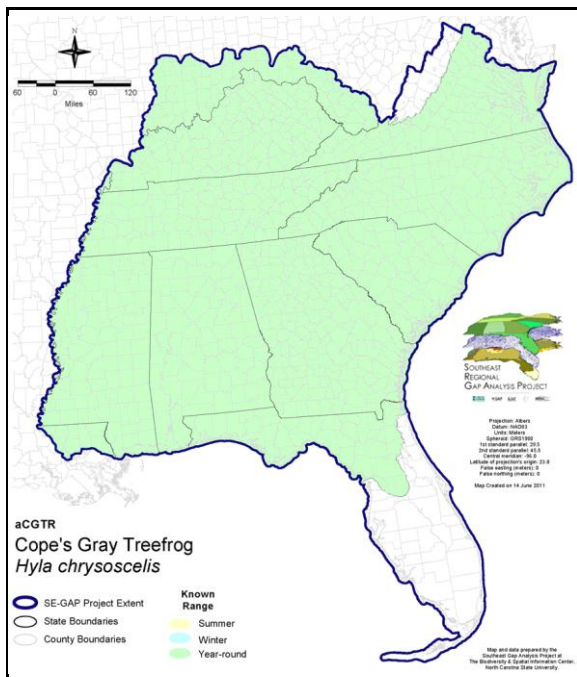
Taxa: Amphibian
 Order: Anura
 Family: Hylidae

SE-GAP Spp Code: **aCGTR**

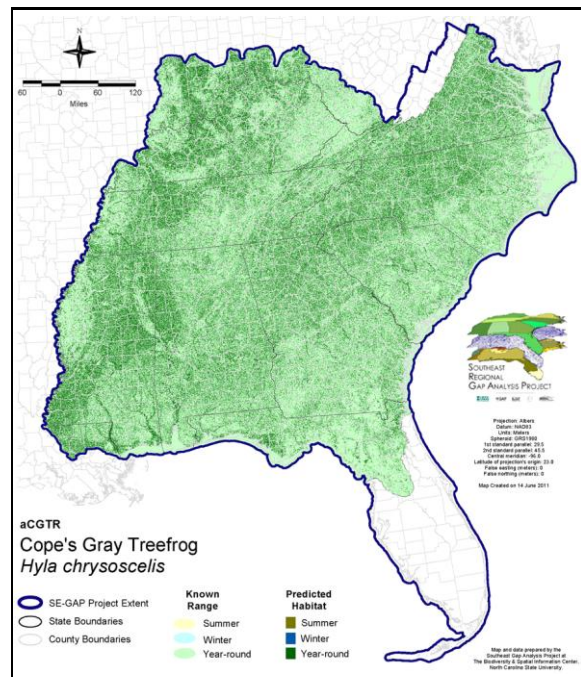
ITIS Species Code: 173502

NatureServe Element Code: AAABC02050

KNOWN RANGE:



PREDICTED HABITAT:



Range Map Link: http://www.basic.ncsu.edu/segap/datazip/maps/SE_Range_aCGTR.pdf

Predicted Habitat Map Link: http://www.basic.ncsu.edu/segap/datazip/maps/SE_Dist_aCGTR.pdf

GAP Online Tool Link: <http://www.gapservice.ncsu.edu/segap/segap/index2.php?species=aCGTR>

Data Download: http://www.basic.ncsu.edu/segap/datazip/region/vert/aCGTR_se00.zip

PROTECTION STATUS:

Reported on March 14, 2011

Federal Status: ---

State Status: KY (N), MS (Non-game species in need of management), NE (NC), NJ (E)

NS Global Rank: G5

NS State Rank: AL (S5), AR (S4), DC (S4), DE (S2), FL (SNR), GA (S5), IA (S4), IL (S4), IN (S4), KS (S5), KY (S5), LA (S5), MD (S5), MI (S5), MN (SNR), MO (S5), MS (SNR), NC (S5), NE (S5), NJ (S1), OH (SNR), OK (S5), SC (SNR), SD (S2), TN (S5), TX (S5), VA (S5), WI (S5), WV (S4), MB (S4), ON (SNA)

SUMMARY OF PREDICTED HABITAT BY MANAGMENT AND GAP PROTECTION STATUS:

	US FWS		US Forest Service		Tenn. Valley Author.		US DOD/ACOE	
	ha	%	ha	%	ha	%	ha	%
Status 1	35,320.8	< 1	10,002.7	< 1	0.0	0	0.0	0
Status 2	69,695.8	< 1	98,945.3	< 1	0.0	0	3,497.9	< 1
Status 3	1,828.3	< 1	830,906.6	3	32,658.8	< 1	240,917.8	< 1
Status 4	55.2	< 1	0.0	0	0.0	0	71.6	< 1
Total	106,900.0	< 1	939,854.6	3	32,658.8	< 1	244,487.3	< 1
	US Dept. of Energy		US Nat. Park Service		NOAA		Other Federal Lands	
	ha	%	ha	%	ha	%	ha	%
Status 1	0.0	0	81,456.3	< 1	0.0	0	0.0	0
Status 2	0.0	0	2,405.9	< 1	718.8	< 1	0.0	0
Status 3	21,612.8	< 1	50,432.9	< 1	0.0	0	4,172.9	< 1
Status 4	0.0	0	0.0	0	0.0	0	0.0	0
Total	21,612.8	< 1	134,295.0	< 1	718.8	< 1	4,172.9	< 1
	Native Am. Reserv.		State Park/Hist. Park		State WMA/Gameland		State Forest	
	ha	%	ha	%	ha	%	ha	%
Status 1	0.0	0	511.5	< 1	44.6	< 1	0.0	0
Status 2	0.0	0	8,322.2	< 1	275,805.6	< 1	212.9	< 1
Status 3	11,656.0	< 1	130,592.1	< 1	88,976.4	< 1	67,477.9	< 1
Status 4	0.0	0	0.0	0	37,142.5	< 1	10.4	< 1
Total	11,656.0	< 1	139,425.8	< 1	401,969.2	1	67,701.2	< 1
	State Coastal Reserve		ST Nat.Area/Preserve		Other State Lands		Private Cons. Easemt.	
	ha	%	ha	%	ha	%	ha	%
Status 1	0.0	0	5,201.7	< 1	0.0	0	0.0	0
Status 2	1,740.2	< 1	33,070.9	< 1	3.9	< 1	937.3	< 1
Status 3	0.0	0	3,506.8	< 1	10,378.4	< 1	22,664.1	< 1
Status 4	0.0	0	< 0.1	< 1	1,739.3	< 1	0.0	0
Total	1,740.2	< 1	41,779.4	< 1	12,121.7	< 1	23,601.3	< 1
	Private Land - No Res.		Water		Overall Total			
	ha	%	ha	%	ha	%		
Status 1	0.0	0	0.0	0	132,537.6	< 1		
Status 2	15.6	< 1	0.0	0	495,372.2	2		
Status 3	466.1	< 1	0.5	< 1	1,518,248.3	8		
Status 4	27,460,967.3	90	7,583.5	< 1	27,544,657.2	90		
Total	27,461,449.0	90	7,583.9	< 1	29,690,815.3	100		

GAP Status 1: An area having permanent protection from conversion of natural land cover and a mandated management plan in operation to maintain a natural state within which disturbance events (of natural type, frequency, and intensity) are allowed to proceed without interference or are mimicked through management.

GAP Status 2: An area having permanent protection from conversion of natural land cover and a mandated management plan in operation to maintain a primarily natural state, but which may receive use or management practices that degrade the quality of existing natural communities.

GAP Status 3: An area having permanent protection from conversion of natural land cover for the majority of the area, but subject to extractive uses of either a broad, low-intensity type or localized intense type. It also confers protection to federally listed endangered and threatened species throughout the area.

GAP Status 4: Lack of irrevocable easement or mandate to prevent conversion of natural habitat types to anthropogenic habitat types. Allows for intensive use throughout the tract. Also includes those tracts for which the existence of such restrictions or sufficient information to establish a higher status is unknown.

PREDICTED HABITAT MODEL(S):

Year-round Model:

Habitat Description: Cope's gray treefrog, is often associated with hardwood or mixed pine-hardwood forests, woodlands and woodland edges. Breeding typically occurs in small ponds, borrow pits, roadside ditches, beaver ponds, or other standing water. These treefrogs are also found in recently disturbed areas, with abundant shrubs, herbaceous growth, and vines (Wilson 1995). ALS jan 04

Ecosystem Classifiers: Hardwood Forest/Woodland (excluding xeric), Mixed Forest, All Mesic Forests including maritime and some montane, Wetlands-excluding Lakes/Rivers/Pondshore- emergent vegetation). ALS Jan 04

Hydrography Mask:

Freshwater Only

Utilizes flowing water features with buffer of 250m from selected water features.

Utilizes open water features with buffers of 250m from and 30m into selected water features.

Utilizes wet vegetation features with buffers of 250m from and unlimited into selected vegetation features.

Selected Map Units:

Functional Group	Map Unit Name
Anthropogenic	Developed Open Space
Anthropogenic	Low Intensity Developed
Anthropogenic	Successional Grassland/Herbaceous
Anthropogenic	Successional Grassland/Herbaceous (Other)
Anthropogenic	Successional Grassland/Herbaceous (Utility Swath)
Anthropogenic	Successional Shrub/Scrub (Clear Cut)
Anthropogenic	Successional Shrub/Scrub (Other)
Anthropogenic	Successional Shrub/Scrub (Utility Swath)
Forest/Woodland	Allegheny-Cumberland Dry Oak Forest and Woodland
Forest/Woodland	Allegheny-Cumberland Dry Oak Forest and Woodland - Hardwood Modifier
Forest/Woodland	Appalachian Hemlock-Hardwood Forest
Forest/Woodland	Atlantic Coastal Plain Central Maritime Forest
Forest/Woodland	Atlantic Coastal Plain Dry and Dry-Mesic Oak Forest
Forest/Woodland	Atlantic Coastal Plain Mesic Hardwood and Mixed Forest
Forest/Woodland	Atlantic Coastal Plain Northern Maritime Forest
Forest/Woodland	Atlantic Coastal Plain Northern Mixed Oak-Heath Forest
Forest/Woodland	Atlantic Coastal Plain Southern Maritime Forest
Forest/Woodland	Central and Southern Appalachian Montane Oak Forest
Forest/Woodland	Central and Southern Appalachian Northern Hardwood Forest
Forest/Woodland	Central Appalachian Oak and Pine Forest
Forest/Woodland	East Gulf Coastal Plain Interior Shortleaf Pine-Oak Forest - Hardwood Modifier
Forest/Woodland	East Gulf Coastal Plain Interior Shortleaf Pine-Oak Forest - Mixed Modifier
Forest/Woodland	East Gulf Coastal Plain Interior Upland Longleaf Pine Woodland - Offsite Hardwood Modifier
Forest/Woodland	East Gulf Coastal Plain Limestone Forest
Forest/Woodland	East Gulf Coastal Plain Maritime Forest
Forest/Woodland	East Gulf Coastal Plain Northern Dry Upland Hardwood Forest
Forest/Woodland	East Gulf Coastal Plain Northern Loess Bluff Forest
Forest/Woodland	East Gulf Coastal Plain Northern Loess Plain Oak-Hickory Upland - Hardwood Modifier
Forest/Woodland	East Gulf Coastal Plain Northern Mesic Hardwood Forest
Forest/Woodland	East Gulf Coastal Plain Southern Loess Bluff Forest
Forest/Woodland	East Gulf Coastal Plain Southern Mesic Slope Forest
Forest/Woodland	Mississippi Delta Maritime Forest
Forest/Woodland	Northeastern Interior Dry Oak Forest - Mixed Modifier
Forest/Woodland	Northeastern Interior Dry Oak Forest-Hardwood Modifier
Forest/Woodland	Northern Atlantic Coastal Plain Dry Hardwood Forest
Forest/Woodland	South-Central Interior Mesophytic Forest

Forest/Woodland	Southeast Florida Coastal Strand and Maritime Hammock
Forest/Woodland	Southern and Central Appalachian Cove Forest
Forest/Woodland	Southern and Central Appalachian Oak Forest
Forest/Woodland	Southern and Central Appalachian Oak Forest - Xeric
Forest/Woodland	Southern Appalachian Montane Pine Forest and Woodland
Forest/Woodland	Southern Coastal Plain Dry Upland Hardwood Forest
Forest/Woodland	Southern Interior Low Plateau Dry-Mesic Oak Forest
Forest/Woodland	Southern Interior Low Plateau Dry-Mesic Oak Forest - Evergreen Modifier
Forest/Woodland	Southern Piedmont Dry Oak-(Pine) Forest - Hardwood Modifier
Forest/Woodland	Southern Piedmont Dry Oak-(Pine) Forest - Mixed Modifier
Forest/Woodland	Southern Piedmont Dry Oak-Heath Forest - Hardwood Modifier
Forest/Woodland	Southern Piedmont Dry Oak-Heath Forest - Mixed Modifier
Forest/Woodland	Southern Piedmont Dry Oak-Heath Forest - Virginia/Pitch Pine Modifier
Forest/Woodland	Southern Piedmont Mesic Forest
Forest/Woodland	Southern Ridge and Valley Dry Calcareous Forest
Forest/Woodland	Southern Ridge and Valley Dry Calcareous Forest - Hardwood Modifier
Forest/Woodland	Southwest Florida Coastal Strand and Maritime Hammock
Water	Open Water (Fresh)
Wetlands	Atlantic Coastal Plain Blackwater Stream Floodplain Forest - Forest Modifier
Wetlands	Atlantic Coastal Plain Blackwater Stream Floodplain Forest - Herbaceous Modifier
Wetlands	Atlantic Coastal Plain Brownwater Stream Floodplain Forest
Wetlands	Atlantic Coastal Plain Clay-Based Carolina Bay Forested Wetland
Wetlands	Atlantic Coastal Plain Clay-Based Carolina Bay Herbaceous Wetland
Wetlands	Atlantic Coastal Plain Nonriverine Swamp and Wet Hardwood Forest - Taxodium/Nyssa Modifier
Wetlands	Atlantic Coastal Plain Nonriverine Swamp and Wet Hardwood Forest - Oak Dominated Modifier
Wetlands	Atlantic Coastal Plain Northern Basin Peat Swamp
Wetlands	Atlantic Coastal Plain Northern Basin Swamp and Wet Hardwood Forest
Wetlands	Atlantic Coastal Plain Northern Wet Longleaf Pine Savanna and Flatwoods
Wetlands	Atlantic Coastal Plain Peatland Pocosin
Wetlands	Atlantic Coastal Plain Small Blackwater River Floodplain Forest
Wetlands	Atlantic Coastal Plain Small Brownwater River Floodplain Forest
Wetlands	Atlantic Coastal Plain Southern Wet Pine Savanna and Flatwoods
Wetlands	Atlantic Coastal Plain Streamhead Seepage Swamp, Pocosin, and Baygall
Wetlands	Central Appalachian Floodplain - Forest Modifier
Wetlands	Central Appalachian Floodplain - Herbaceous Modifier
Wetlands	Central Appalachian Riparian - Forest Modifier
Wetlands	Central Appalachian Riparian - Herbaceous Modifier
Wetlands	Central Florida Herbaceous Seep
Wetlands	Central Florida Pine Flatwoods
Wetlands	Central Interior Highlands and Appalachian Sinkhole and Depression Pond
Wetlands	East Gulf Coastal Plain Interior Shrub Bog
Wetlands	East Gulf Coastal Plain Jackson Plain Dry Flatwoods - Open Understory Modifier
Wetlands	East Gulf Coastal Plain Jackson Plain Dry Flatwoods - Scrub/Shrub Understory Modifier
Wetlands	East Gulf Coastal Plain Large River Floodplain Forest - Forest Modifier
Wetlands	East Gulf Coastal Plain Large River Floodplain Forest - Herbaceous Modifier
Wetlands	East Gulf Coastal Plain Near-Coast Pine Flatwoods - Offsite Hardwood Modifier
Wetlands	East Gulf Coastal Plain Near-Coast Pine Flatwoods - Open Understory Modifier
Wetlands	East Gulf Coastal Plain Near-Coast Pine Flatwoods - Scrub/Shrub Understory Modifier
Wetlands	East Gulf Coastal Plain Northern Seepage Swamp
Wetlands	East Gulf Coastal Plain Small Stream and River Floodplain Forest
Wetlands	East Gulf Coastal Plain Southern Loblolly-Hardwood Flatwoods
Wetlands	East Gulf Coastal Plain Treeless Savanna and Wet Prairie
Wetlands	Lower Mississippi River Bottomland and Floodplain Forest
Wetlands	Lower Mississippi River Bottomland Depressions - Forest Modifier
Wetlands	Lower Mississippi River Bottomland Depressions - Herbaceous Modifier
Wetlands	Mississippi River Low Floodplain (Bottomland) Forest

Wetlands	Mississippi River Riparian Forest
Wetlands	North-Central Appalachian Acidic Swamp
Wetlands	North-Central Appalachian Seepage Fen
Wetlands	North-Central Interior and Appalachian Rich Swamp
Wetlands	South-Central Interior Large Floodplain - Forest Modifier
Wetlands	South-Central Interior Large Floodplain - Herbaceous Modifier
Wetlands	South-Central Interior Small Stream and Riparian
Wetlands	South-Central Interior/Upper Coastal Plain Wet Flatwoods
Wetlands	Southern and Central Appalachian Bog and Fen
Wetlands	Southern Appalachian Seepage Wetland
Wetlands	Southern Coastal Plain Blackwater River Floodplain Forest
Wetlands	Southern Coastal Plain Herbaceous Seepage Bog
Wetlands	Southern Coastal Plain Nonriverine Basin Swamp
Wetlands	Southern Coastal Plain Seepage Swamp and Baygall
Wetlands	Southern Piedmont Large Floodplain Forest - Forest Modifier
Wetlands	Southern Piedmont Large Floodplain Forest - Herbaceous Modifier
Wetlands	Southern Piedmont Seepage Wetland
Wetlands	Southern Piedmont Small Floodplain and Riparian Forest
Wetlands	Southern Piedmont/Ridge and Valley Upland Depression Swamp
Wetlands	Western Highland Rim Seepage Fen

CITATIONS: Collins, J. T. 1982. Amphibians and reptiles in Kansas. Second edition. Univ. Kansas Mus. Nat. Hist., Pub. Ed. Ser. 8. xiii + 356 pp.

Gerhardt, H. C., et al. 1994. Hybridization in the diploid-tetraploid treefrogs *HYLA CHRYSOSCELIS* and *HYLA VERSICOLOR*. *Copeia* 1994:51-59.

Godwin, G. J., and S. M. Roble. 1983. Mating success in male treefrogs, *HYLA CHRYSOSCELIS* (Anura:Hylidae). *Herpetologica* 39:141-146.

Jaslow, Alan P. and Richard C. Vogt. 1977. Identification and distribution of *Hyla versicolor* and *Hyla chrysoscelis* in Wisconsin. *Herpetologica* 33(2):201-205.

Johnson, T. R. 1977. The amphibians of Missouri. Univ. Kansas Mus. Nat. Hist., Pub. Ed. Ser. 6. ix + 134 pp.

Little, M. A., B. L. Monroe, Jr., and J. E. Wiley. 1989. The distribution of the *HYLA VERSICOLOR* complex in the northern Appalachian highlands. *J. Herpetol.* 23:299-303.

Martof, B. S., W. M. Palmer, J. R. Bailey, and J. R. Harrison, III. 1980. Amphibians and reptiles of the Carolinas and Virginia. University of North Carolina Press, Chapel Hill, North Carolina. 264 pp.

Matson, T. O. 1990. Erythrocyte size as a taxonomic character in the identification of Ohio *HYLA CHRYSOSCELIS* and *H. VERSICOLOR*. *Herpetologica* 46:457-462.

Mount, R. H. 1975. The Reptiles and Amphibians of Alabama. Auburn University Agricultural Experiment Station, Auburn, Alabama. vii + 347 pp.

Ralin, D. B., M. A. Romano, and C. W. Kilpatrick. 1983. The tetraploid treefrog *HYLA VERSICOLOR*:evidence for a single origin from the diploid *H. CHRYSOSCELIS*. *Herpetologica* 39:212-225.

Ritke, M. E., and J. G. Babb. 1991. Behavior of the gray treefrog (*HYLA CHRYSOSCELIS*) during the non-breeding season. *Herpetol. Rev.* 22:5-6, 8.

Ritke, M. E., J. G. Babb, and M. K. Ritke. 1990. Life history of the gray treefrog (*HYLA CHRYSOSCELIS*) in wettern Tennessee. *J. Herpetol.* 24:135-141.

Ritke, M. E., J. G. Babb, and M. K. Ritke. 1991. Breeding-site specificity in the gray treefrog (*HYLA CHRYSOSCELIS*). *J. Herpetol.* 25:123-125.

Vogt, R. G. 1981. Natural history of amphibians and reptiles of Wisconsin. Milwaukee Public Museum. 205 pp.

Wiley, J. E. 1983. Chromosome polymorphism in *HYLA CHRYSOSCELIS*. *Copeia* 1983:273-275.

Wilson, L. A. 1995. The Land Manager's Guide to the amphibians and reptiles of the South. Chapel Hill, NC: The Nature Conservancy.