



SOUTHEAST GAP ANALYSIS PROJECT



Species Modeling Report

Pigeon Mountain Salamander

Plethodon petraeus

Taxa: Amphibian

Order: Caudata

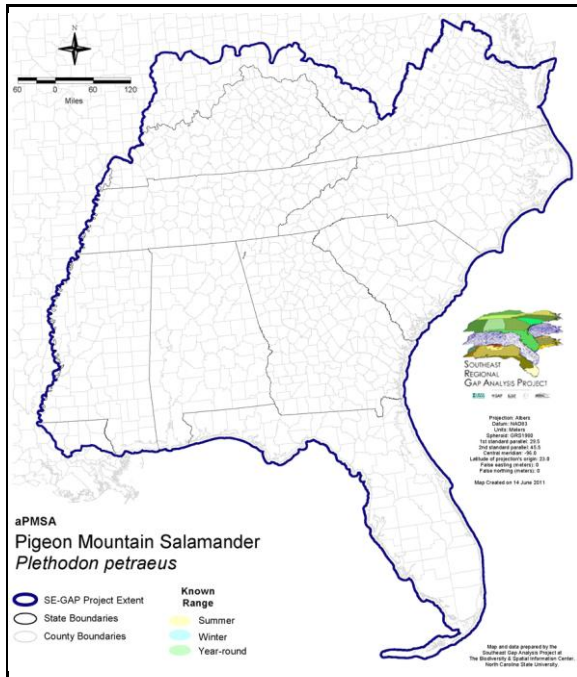
Family: Plethodontidae

SE-GAP Spp Code: **aPMSA**

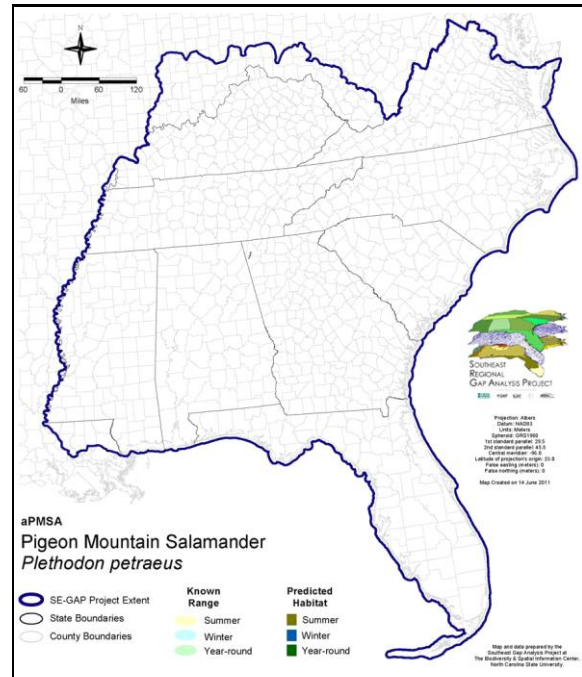
ITIS Species Code: 208291

NatureServe Element Code: AAAAD12310

KNOWN RANGE:



PREDICTED HABITAT:



Range Map Link: http://www.basic.ncsu.edu/segap/datazip/maps/SE_Range_aPMSA.pdf

Predicted Habitat Map Link: http://www.basic.ncsu.edu/segap/datazip/maps/SE_Dist_aPMSA.pdf

GAP Online Tool Link: <http://www.gapservice.ncsu.edu/segap/segap/index2.php?species=aPMSA>

Data Download: http://www.basic.ncsu.edu/segap/datazip/region/vert/aPMSA_se00.zip

PROTECTION STATUS:

Federal Status: ---

State Status: GA (R)

NS Global Rank: G2

NS State Rank: GA (S2)

Reported on March 14, 2011

SUMMARY OF PREDICTED HABITAT BY MANAGMENT AND GAP PROTECTION STATUS:

	US FWS		US Forest Service		Tenn. Valley Author.		US DOD/ACOE	
	ha	%	ha	%	ha	%	ha	%
Status 1	0.0	0	0.0	0	0.0	0	0.0	0
Status 2	0.0	0	0.0	0	0.0	0	0.0	0
Status 3	0.0	0	0.0	0	0.0	0	0.0	0
Status 4	0.0	0	0.0	0	0.0	0	0.0	0
Total	0.0	0	0.0	0	0.0	0	0.0	0
	US Dept. of Energy		US Nat. Park Service		NOAA		Other Federal Lands	
	ha	%	ha	%	ha	%	ha	%
Status 1	0.0	0	0.0	0	0.0	0	0.0	0
Status 2	0.0	0	0.0	0	0.0	0	0.0	0
Status 3	0.0	0	0.0	0	0.0	0	0.0	0
Status 4	0.0	0	0.0	0	0.0	0	0.0	0
Total	0.0	0	0.0	0	0.0	0	0.0	0
	Native Am. Reserv.		State Park/Hist. Park		State WMA/Gameland		State Forest	
	ha	%	ha	%	ha	%	ha	%
Status 1	0.0	0	0.0	0	0.0	0	0.0	0
Status 2	0.0	0	0.0	0	927.6	42	0.0	0
Status 3	0.0	0	0.0	0	0.0	0	0.0	0
Status 4	0.0	0	0.0	0	0.0	0	0.0	0
Total	0.0	0	0.0	0	927.6	42	0.0	0
	State Coastal Reserve		ST Nat.Area/Preserve		Other State Lands		Private Cons. Easemt.	
	ha	%	ha	%	ha	%	ha	%
Status 1	0.0	0	0.0	0	0.0	0	0.0	0
Status 2	0.0	0	0.0	0	0.0	0	0.0	0
Status 3	0.0	0	0.0	0	0.0	0	0.0	0
Status 4	0.0	0	0.0	0	0.0	0	0.0	0
Total	0.0	0	0.0	0	0.0	0	0.0	0
	Private Land - No Res.		Water		Overall Total			
	ha	%	ha	%	ha	%	ha	%
Status 1	0.0	0	0.0	0	0.0	0	0.0	0
Status 2	0.0	0	0.0	0	927.6	42	927.6	42
Status 3	0.0	0	0.0	0	0.0	0	0.0	0
Status 4	1,279.8	58	0.0	0	1,279.8	58	1,279.8	58
Total	1,279.8	58	0.0	0	2,207.4	100	2,207.4	100

GAP Status 1: An area having permanent protection from conversion of natural land cover and a mandated management plan in operation to maintain a natural state within which disturbance events (of natural type, frequency, and intensity) are allowed to proceed without interference or are mimicked through management.

GAP Status 2: An area having permanent protection from conversion of natural land cover and a mandated management plan in operation to maintain a primarily natural state, but which may receive use or management practices that degrade the quality of existing natural communities.

GAP Status 3: An area having permanent protection from conversion of natural land cover for the majority of the area, but subject to extractive uses of either a broad, low-intensity type or localized intense type. It also confers protection to federally listed endangered and threatened species throughout the area.

GAP Status 4: Lack of irrevocable easement or mandate to prevent conversion of natural habitat types to anthropogenic habitat types. Allows for intensive use throughout the tract. Also includes those tracts for which the existence of such restrictions or sufficient information to establish a higher status is unknown.

PREDICTED HABITAT MODEL(S):

Year-round Model:

Habitat Description: Endemic to Georgia, Pigeon Mountain Salamanders are known to occur only on Pigeon Mountain in Walker Country. Although limited in range, they are locally abundant, inhabiting rocky slopes in hardwood or mixed hardwood forest, where they are usually found within moist rock crevices. Found at elevations between 225 and 600 m (Natureserve April 15, 2005). They are frequently seen around cave entrances, and have also been observed under logs and under leaf litter in the vicinity of rock outcrops. Stacy Smith, 15 April05

Elevation Mask: > 225m and < 550m

Selected Map Units:

Functional Group	Map Unit Name
Forest/Woodland	South-Central Interior Mesophytic Forest
Forest/Woodland	Southern Ridge and Valley Dry Calcareous Forest
Forest/Woodland	Southern Ridge and Valley Dry Calcareous Forest - Hardwood Modifier
Rock Outcrop	Southern Interior Calcareous Cliff

CITATIONS: Jensen, J. B., and C. D. Camp. 2004. *Plethodon petraeus*. Catalogue of American Amphibians and Reptiles 783:1-2.

Jensen, J.B., C.D. Camp, and J.L. Marshall. 2002. Ecology and life history of the Pigeon Mountain salamander. *Southeastern Naturalist* 1(1): 3-17.

Petranka, J. W. 1998. *Salamanders of the United States and Canada*. Washington DC: Smithsonian Inst. Press.

For more information:: SE-GAP Analysis Project / BaSIC
127 David Clark Labs
Dept. of Biology, NCSU
Raleigh, NC 27695-7617
(919) 513-2853
www.basic.ncsu.edu/segap

Compiled: 15 September 2011

This data was compiled and/or developed by the Southeast GAP Analysis Project at The Biodiversity and Spatial Information Center, North Carolina State University.