



# SOUTHEAST GAP ANALYSIS PROJECT



## Species Modeling Report

### Squirrel Treefrog

*Hyla squirella*

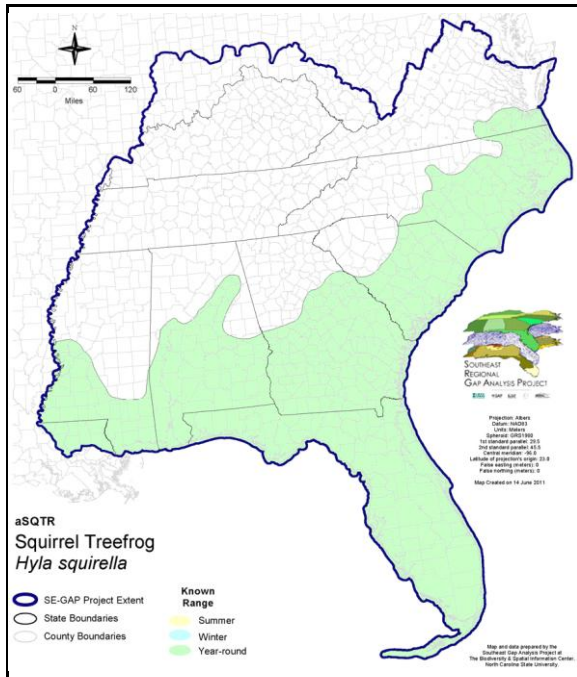
Taxa: Amphibian  
 Order: Anura  
 Family: Hylidae

SE-GAP Spp Code: **aSQTR**

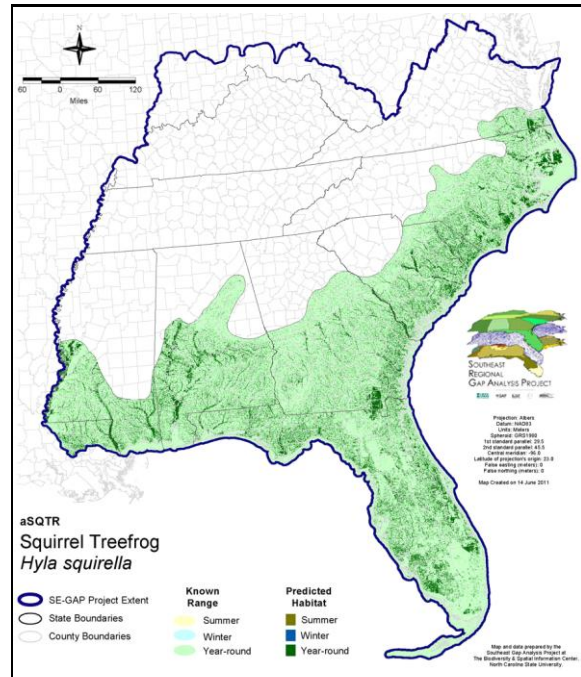
ITIS Species Code: 173504

NatureServe Element Code: AAABC02120

#### KNOWN RANGE:



#### PREDICTED HABITAT:



Range Map Link: [http://www.basic.ncsu.edu/segap/datazip/maps/SE\\_Range\\_aSQTR.pdf](http://www.basic.ncsu.edu/segap/datazip/maps/SE_Range_aSQTR.pdf)

Predicted Habitat Map Link: [http://www.basic.ncsu.edu/segap/datazip/maps/SE\\_Dist\\_aSQTR.pdf](http://www.basic.ncsu.edu/segap/datazip/maps/SE_Dist_aSQTR.pdf)

GAP Online Tool Link: <http://www.gapservice.ncsu.edu/segap/segap/index2.php?species=aSQTR>

Data Download: [http://www.basic.ncsu.edu/segap/datazip/region/vert/aSQTR\\_se00.zip](http://www.basic.ncsu.edu/segap/datazip/region/vert/aSQTR_se00.zip)

#### PROTECTION STATUS:

Reported on March 14, 2011

Federal Status: ---

State Status: MS (Non-game species in need of management), OK (Category II)

NS Global Rank: G5

NS State Rank: AL (S5), FL (SNR), GA (S5), LA (S5), MS (S5), NC (S5), OK (S4?), SC (SNR), TX (S5), VA (S4)

**SUMMARY OF PREDICTED HABITAT BY MANAGMENT AND GAP PROTECTION STATUS:**

|          | US FWS                 |     | US Forest Service     |     | Tenn. Valley Author. |     | US DOD/ACOE           |     |
|----------|------------------------|-----|-----------------------|-----|----------------------|-----|-----------------------|-----|
|          | ha                     | %   | ha                    | %   | ha                   | %   | ha                    | %   |
| Status 1 | 204,775.3              | 2   | 5,728.6               | < 1 | 0.0                  | 0   | 0.0                   | 0   |
| Status 2 | 131,346.8              | 1   | 32,393.7              | < 1 | 0.0                  | 0   | 0.0                   | 0   |
| Status 3 | 698.0                  | < 1 | 290,440.1             | 3   | 0.0                  | 0   | 131,217.8             | 1   |
| Status 4 | 1,286.6                | < 1 | 0.0                   | 0   | 0.0                  | 0   | 16.3                  | < 1 |
| Total    | 338,106.7              | 3   | 328,562.4             | 3   | 0.0                  | 0   | 131,234.0             | 1   |
|          | US Dept. of Energy     |     | US Nat. Park Service  |     | NOAA                 |     | Other Federal Lands   |     |
|          | ha                     | %   | ha                    | %   | ha                   | %   | ha                    | %   |
| Status 1 | 0.0                    | 0   | 29,459.3              | < 1 | 13.6                 | < 1 | 4,144.9               | < 1 |
| Status 2 | 0.0                    | 0   | 2,289.4               | < 1 | 2,295.1              | < 1 | 11.8                  | < 1 |
| Status 3 | 16,363.6               | < 1 | 68,603.3              | < 1 | 0.0                  | 0   | 1,782.1               | < 1 |
| Status 4 | 0.0                    | 0   | 0.0                   | 0   | 0.0                  | 0   | 0.0                   | 0   |
| Total    | 16,363.6               | < 1 | 100,352.0             | < 1 | 2,308.7              | < 1 | 5,938.7               | < 1 |
|          | Native Am. Reserv.     |     | State Park/Hist. Park |     | State WMA/Gameland   |     | State Forest          |     |
|          | ha                     | %   | ha                    | %   | ha                   | %   | ha                    | %   |
| Status 1 | 0.0                    | 0   | 143.5                 | < 1 | 0.0                  | 0   | 0.0                   | 0   |
| Status 2 | 0.0                    | 0   | 645.1                 | < 1 | 308,755.2            | 3   | 0.0                   | 0   |
| Status 3 | 4.5                    | < 1 | 342,836.6             | 3   | 73,257.9             | < 1 | 139,015.5             | 1   |
| Status 4 | 0.0                    | 0   | 0.0                   | 0   | 11,567.5             | < 1 | 9.0                   | < 1 |
| Total    | 4.5                    | < 1 | 343,625.1             | 3   | 393,580.6            | 4   | 139,024.5             | 1   |
|          | State Coastal Reserve  |     | ST Nat.Area/Preserve  |     | Other State Lands    |     | Private Cons. Easemt. |     |
|          | ha                     | %   | ha                    | %   | ha                   | %   | ha                    | %   |
| Status 1 | 0.0                    | 0   | 1,827.5               | < 1 | 0.0                  | 0   | 0.0                   | 0   |
| Status 2 | 11,399.0               | < 1 | 32,604.2              | < 1 | 0.0                  | 0   | 1,244.2               | < 1 |
| Status 3 | 0.0                    | 0   | 12,631.1              | < 1 | 6,987.6              | < 1 | 61,674.9              | < 1 |
| Status 4 | 0.0                    | 0   | 0.0                   | 0   | 944.5                | < 1 | 0.0                   | 0   |
| Total    | 11,399.0               | < 1 | 47,062.7              | < 1 | 7,932.1              | < 1 | 62,919.1              | < 1 |
|          | Private Land - No Res. |     | Water                 |     | Overall Total        |     |                       |     |
|          | ha                     | %   | ha                    | %   | ha                   | %   | ha                    | %   |
| Status 1 | 0.0                    | 0   | 0.0                   | 0   | 246,092.5 2          |     |                       |     |
| Status 2 | 376.5                  | < 1 | 0.0                   | 0   | 523,361.0 5          |     |                       |     |
| Status 3 | 1,406.7                | < 1 | 0.0                   | 0   | 1,146,919.6 13       |     |                       |     |
| Status 4 | 8,396,083.1            | 79  | 25,137.5              | < 1 | 8,445,325.4 79       |     |                       |     |
| Total    | 8,397,866.3            | 79  | 25,137.5              | < 1 | 10,361,698.5 100     |     |                       |     |

GAP Status 1: An area having permanent protection from conversion of natural land cover and a mandated management plan in operation to maintain a natural state within which disturbance events (of natural type, frequency, and intensity) are allowed to proceed without interference or are mimicked through management.

GAP Status 2: An area having permanent protection from conversion of natural land cover and a mandated management plan in operation to maintain a primarily natural state, but which may receive use or management practices that degrade the quality of existing natural communities.

GAP Status 3: An area having permanent protection from conversion of natural land cover for the majority of the area, but subject to extractive uses of either a broad, low-intensity type or localized intense type. It also confers protection to federally listed endangered and threatened species throughout the area.

GAP Status 4: Lack of irrevocable easement or mandate to prevent conversion of natural habitat types to anthropogenic habitat types. Allows for intensive use throughout the tract. Also includes those tracts for which the existence of such restrictions or sufficient information to establish a higher status is unknown.

**PREDICTED HABITAT MODEL(S):**

**Year-round Model:**

Habitat Description: The squirrel treefrog is commonly found in moist open woodlands but also inhabits pine savannas, mixed forests, and saturated forests such as bottomland hardwoods and occasionally cypress swamps. This species is fairly ubiquitous throughout the South and has adapted well to suburban and urban environments. Squirrel treefrogs require open pool or pond environments for breeding, foraging, and refuge. (ALS Jan 04).

Ecosystem Classifiers: Evergreen Woodlands (Excluding Sandhills), Mixed Forest, Maritime Forest, Freshwater wetland, Wetlands (Flatwoods, Swamps, depressional, floodplain/riparian), Anthropogenic. ALS Jan 04

**Hydrography Mask:**

Freshwater Only

Utilizes flowing water features with buffers of 30m from and 30m into selected water features.

Utilizes open water features with buffers of 30m from and 30m into selected water features.

Utilizes wet vegetation features with buffers of 30m from and unlimited into selected vegetation features.

**Selected Map Units:**

| Functional Group                  | Map Unit Name  |
|-----------------------------------|--|
| Anthropogenic                     | Developed Open Space   |
| Anthropogenic                     | Low Intensity Developed  |
| Anthropogenic                     | Medium Intensity Developed   |
| Anthropogenic                     | Successional Shrub/Scrub (Clear Cut)   |
| Anthropogenic                     | Successional Shrub/Scrub (Other)   |
| Anthropogenic                     | Successional Shrub/Scrub (Utility Swath)   |
| Coastal Dune & Freshwater Wetland | Atlantic and Gulf Coastal Plain Interdunal Wetland   |
| Forest/Woodland                   | Atlantic Coastal Plain Central Maritime Forest   |
| Forest/Woodland                   | Atlantic Coastal Plain Northern Maritime Forest  |
| Forest/Woodland                   | Atlantic Coastal Plain Northern Mixed Oak-Heath Forest                                     |
| Forest/Woodland                   | Atlantic Coastal Plain Southern Maritime Forest  |
| Forest/Woodland                   | Atlantic Coastal Plain Upland Longleaf Pine Woodland                                       |
| Forest/Woodland                   | East Gulf Coastal Plain Interior Shortleaf Pine-Oak Forest - Mixed Modifier                |
| Forest/Woodland                   | East Gulf Coastal Plain Interior Shortleaf Pine-Oak Forest - Pine Modifier                 |
| Forest/Woodland                   | East Gulf Coastal Plain Interior Upland Longleaf Pine Woodland - Loblolly Modifier         |
| Forest/Woodland                   | East Gulf Coastal Plain Interior Upland Longleaf Pine Woodland - Open Understory Modifier  |
| Forest/Woodland                   | East Gulf Coastal Plain Interior Upland Longleaf Pine Woodland - Scrub/Shrub Modifier      |
| Forest/Woodland                   | East Gulf Coastal Plain Maritime Forest  |
| Forest/Woodland                   | Mississippi Delta Maritime Forest  |
| Forest/Woodland                   | Southeast Florida Coastal Strand and Maritime Hammock                                      |
| Forest/Woodland                   | Southeastern Interior Longleaf Pine Woodland   |
| Forest/Woodland                   | Southern Piedmont Dry Oak-(Pine) Forest - Loblolly Pine Modifier                           |
| Forest/Woodland                   | Southern Piedmont Dry Oak-(Pine) Forest - Mixed Modifier                                   |
| Forest/Woodland                   | Southern Piedmont Dry Oak-Heath Forest - Mixed Modifier                                    |
| Forest/Woodland                   | Southwest Florida Coastal Strand and Maritime Hammock                                      |
| Water                             | Open Water (Fresh)   |
| Wetlands                          | Atlantic Coastal Plain Blackwater Stream Floodplain Forest - Forest Modifier               |
| Wetlands                          | Atlantic Coastal Plain Blackwater Stream Floodplain Forest - Herbaceous Modifier           |
| Wetlands                          | Atlantic Coastal Plain Brownwater Stream Floodplain Forest                                 |
| Wetlands                          | Atlantic Coastal Plain Clay-Based Carolina Bay Forested Wetland                            |
| Wetlands                          | Atlantic Coastal Plain Clay-Based Carolina Bay Herbaceous Wetland                          |
| Wetlands                          | Atlantic Coastal Plain Nonriverine Swamp and Wet Hardwood Forest - Taxodium/Nyssa Modifier |
| Wetlands                          | Atlantic Coastal Plain Nonriverine Swamp and Wet Hardwood Forest - Oak Dominated Modifier  |
| Wetlands                          | Atlantic Coastal Plain Northern Basin Peat Swamp   |
| Wetlands                          | Atlantic Coastal Plain Northern Basin Swamp and Wet Hardwood Forest                        |

|          |   |
|----------|---|
| Wetlands | Atlantic Coastal Plain Northern Wet Longleaf Pine Savanna and Flatwoods               |
| Wetlands | Atlantic Coastal Plain Peatland Pocosin   |
| Wetlands | Atlantic Coastal Plain Sandhill Seep  |
| Wetlands | Atlantic Coastal Plain Small Blackwater River Floodplain Forest                       |
| Wetlands | Atlantic Coastal Plain Small Brownwater River Floodplain Forest                       |
| Wetlands | Atlantic Coastal Plain Southern Wet Pine Savanna and Flatwoods                        |
| Wetlands | Atlantic Coastal Plain Streamhead Seepage Swamp, Pocosin, and Baygall                 |
| Wetlands | Central Florida Herbaceous Pondshore  |
| Wetlands | Central Florida Herbaceous Seep   |
| Wetlands | Central Florida Pine Flatwoods  |
| Wetlands | East Gulf Coastal Plain Interior Shrub Bog  |
| Wetlands | East Gulf Coastal Plain Jackson Plain Dry Flatwoods - Open Understory Modifier        |
| Wetlands | East Gulf Coastal Plain Jackson Plain Dry Flatwoods - Scrub/Shrub Understory Modifier |
| Wetlands | East Gulf Coastal Plain Large River Floodplain Forest - Forest Modifier               |
| Wetlands | East Gulf Coastal Plain Large River Floodplain Forest - Herbaceous Modifier           |
| Wetlands | East Gulf Coastal Plain Near-Coast Pine Flatwoods - Offsite Hardwood Modifier         |
| Wetlands | East Gulf Coastal Plain Near-Coast Pine Flatwoods - Open Understory Modifier          |
| Wetlands | East Gulf Coastal Plain Near-Coast Pine Flatwoods - Scrub/Shrub Understory Modifier   |
| Wetlands | East Gulf Coastal Plain Northern Seepage Swamp  |
| Wetlands | East Gulf Coastal Plain Small Stream and River Floodplain Forest                      |
| Wetlands | East Gulf Coastal Plain Southern Loblolly-Hardwood Flatwoods                          |
| Wetlands | East Gulf Coastal Plain Treeless Savanna and Wet Prairie                              |
| Wetlands | Floridian Highlands Freshwater Marsh  |
| Wetlands | Lower Mississippi River Bottomland and Floodplain Forest                              |
| Wetlands | Lower Mississippi River Bottomland Depressions - Forest Modifier                      |
| Wetlands | Lower Mississippi River Bottomland Depressions - Herbaceous Modifier                  |
| Wetlands | Mississippi River Low Floodplain (Bottomland) Forest                                  |
| Wetlands | Mississippi River Riparian Forest   |
| Wetlands | South Florida Bayhead Swamp   |
| Wetlands | South Florida Dwarf Cypress Savanna   |
| Wetlands | South Florida Freshwater Slough and Gator Hole  |
| Wetlands | South Florida Pine Flatwoods  |
| Wetlands | South Florida Wet Marl Prairie  |
| Wetlands | South Florida Willow Head   |
| Wetlands | South-Central Interior Large Floodplain - Forest Modifier                             |
| Wetlands | South-Central Interior Large Floodplain - Herbaceous Modifier                         |
| Wetlands | South-Central Interior Small Stream and Riparian                                      |
| Wetlands | South-Central Interior/Upper Coastal Plain Wet Flatwoods                              |
| Wetlands | Southern and Central Appalachian Bog and Fen  |
| Wetlands | Southern Appalachian Seepage Wetland  |
| Wetlands | Southern Coastal Plain Blackwater River Floodplain Forest                             |
| Wetlands | Southern Coastal Plain Herbaceous Seepage Bog   |
| Wetlands | Southern Coastal Plain Nonriverine Basin Swamp  |
| Wetlands | Southern Coastal Plain Seepage Swamp and Baygall                                      |
| Wetlands | Southern Piedmont Large Floodplain Forest - Forest Modifier                           |
| Wetlands | Southern Piedmont Large Floodplain Forest - Herbaceous Modifier                       |
| Wetlands | Southern Piedmont Seepage Wetland   |
| Wetlands | Southern Piedmont Small Floodplain and Riparian Forest                                |
| Wetlands | Southern Piedmont/Ridge and Valley Upland Depression Swamp                            |

**CITATIONS:** Behler, J. L., and F. W. King. 1979. The Audubon Society field guide to North American reptiles and amphibians. Alfred A. Knopf, New York. 719 pp.

Conant, R. 1975. A Field Guide to Reptiles and Amphibians of Eastern and Central North America. Second Edition. Houghton Mifflin Company, Boston, Massachusetts. xvii + 429 pp.

Martof, B. S. 1975. *Hyla squirella*. Cat. Am. Amph. Rep. 168.1-168.2.

Martof, B. S., W. M. Palmer, J. R. Bailey, and J. R. Harrison, III. 1980. Amphibians and reptiles of the Carolinas and Virginia. University of North Carolina Press, Chapel Hill, North Carolina. 264 pp.

Mount, R. H. 1975. The Reptiles and Amphibians of Alabama. Auburn University Agricultural Experiment Station, Auburn, Alabama. vii + 347 pp.

Schwartz, A., and R. W. Henderson. 1991. Amphibians and Reptiles of the West Indies: Descriptions, Distributions, and Natural History. University of Florida Press, Gainesville, Florida. xvi + 720 pp.

Wilson, L. A. 1995. The Land Manager's Guide to the amphibians and reptiles of the South. Chapel Hill, NC: The Nature Conservancy.

---

For more information:: SE-GAP Analysis Project / BaSIC  
127 David Clark Labs  
Dept. of Biology, NCSU  
Raleigh, NC 27695-7617  
(919) 513-2853  
[www.basic.ncsu.edu/segap](http://www.basic.ncsu.edu/segap)

Compiled: 15 September 2011

This data was compiled and/or developed  
by the Southeast GAP Analysis Project at  
The Biodiversity and Spatial Information  
Center, North Carolina State University.