



# SOUTHEAST GAP ANALYSIS PROJECT



## Species Modeling Report

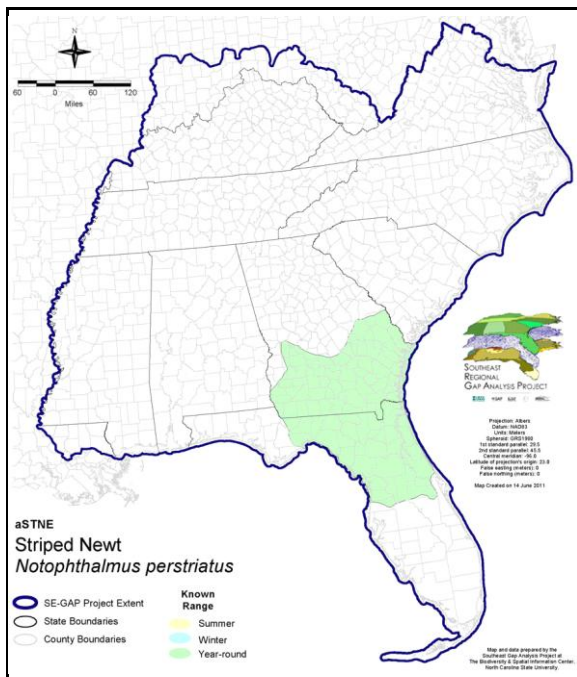
### Striped Newt

*Notophthalmus perstriatus*

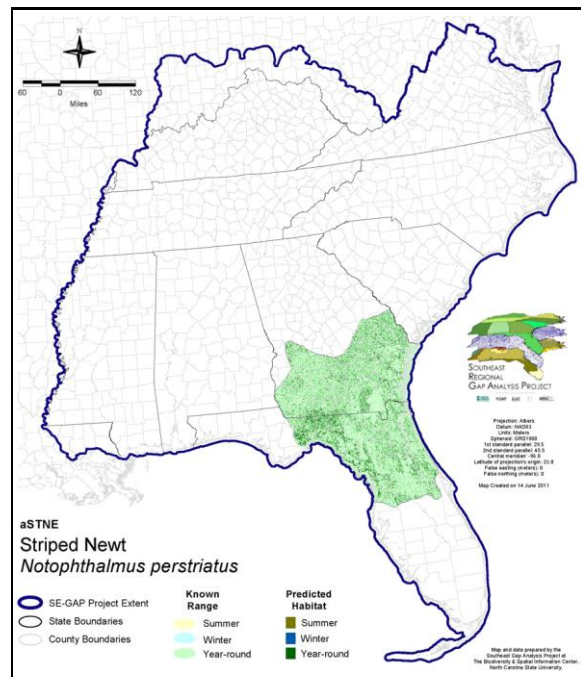
Taxa: Amphibian  
 Order: Caudata  
 Family: Salamandridae

SE-GAP Spp Code: **aSTNE**  
 ITIS Species Code: 173618  
 NatureServe Element Code: AAAAF01020

#### KNOWN RANGE:



#### PREDICTED HABITAT:



Range Map Link: [http://www.basic.ncsu.edu/segap/datazip/maps/SE\\_Range\\_aSTNE.pdf](http://www.basic.ncsu.edu/segap/datazip/maps/SE_Range_aSTNE.pdf)

Predicted Habitat Map Link: [http://www.basic.ncsu.edu/segap/datazip/maps/SE\\_Dist\\_aSTNE.pdf](http://www.basic.ncsu.edu/segap/datazip/maps/SE_Dist_aSTNE.pdf)

GAP Online Tool Link: <http://www.gapservice.ncsu.edu/segap/segap/index2.php?species=aSTNE>

Data Download: [http://www.basic.ncsu.edu/segap/datazip/region/vert/aSTNE\\_se00.zip](http://www.basic.ncsu.edu/segap/datazip/region/vert/aSTNE_se00.zip)

#### PROTECTION STATUS:

Reported on March 14, 2011

Federal Status: ---  
 State Status: GA (T)  
 NS Global Rank: G2G3  
 NS State Rank: FL (S2S3), GA (S2)

**SUMMARY OF PREDICTED HABITAT BY MANAGMENT AND GAP PROTECTION STATUS:**

	US FWS		US Forest Service		Tenn. Valley Author.		US DOD/ACOE	
	ha	%	ha	%	ha	%	ha	%
Status 1	4,935.0	< 1	0.0	0	0.0	0	0.0	0
Status 2	12,609.3	< 1	15,390.6	< 1	0.0	0	0.0	0
Status 3	3.2	< 1	72,593.0	3	0.0	0	15,197.7	< 1
Status 4	5.8	< 1	0.0	0	0.0	0	0.0	0
Total	17,553.2	< 1	87,983.6	4	0.0	0	15,197.7	< 1
	US Dept. of Energy		US Nat. Park Service		NOAA		Other Federal Lands	
	ha	%	ha	%	ha	%	ha	%
Status 1	0.0	0	133.4	< 1	0.0	0	0.0	0
Status 2	0.0	0	681.8	< 1	56.2	< 1	0.0	0
Status 3	0.0	0	16.5	< 1	0.0	0	0.0	0
Status 4	0.0	0	0.0	0	0.0	0	0.0	0
Total	0.0	0	831.6	< 1	56.2	< 1	0.0	0
	Native Am. Reserv.		State Park/Hist. Park		State WMA/Gameland		State Forest	
	ha	%	ha	%	ha	%	ha	%
Status 1	0.0	0	0.0	0	0.0	0	0.0	0
Status 2	0.0	0	401.7	< 1	44,668.9	2	0.0	0
Status 3	0.0	0	77,374.4	3	1,076.9	< 1	43,301.0	2
Status 4	0.0	0	< 0.1	< 1	0.6	< 1	0.0	0
Total	0.0	0	77,776.2	3	45,746.5	2	43,301.0	2
	State Coastal Reserve		ST Nat.Area/Preserve		Other State Lands		Private Cons. Easemt.	
	ha	%	ha	%	ha	%	ha	%
Status 1	0.0	0	0.0	0	0.0	0	0.0	0
Status 2	0.0	0	2,981.3	< 1	0.0	0	341.3	< 1
Status 3	0.0	0	5,239.2	< 1	2,749.0	< 1	19,298.7	< 1
Status 4	0.0	0	0.0	0	159.8	< 1	0.0	0
Total	0.0	0	8,220.5	< 1	2,908.7	< 1	19,640.0	< 1
	Private Land - No Res.		Water		Overall Total			
	ha	%	ha	%	ha	%		
Status 1	0.0	0	0.0	0	5,068.4	< 1		
Status 2	0.0	0	0.0	0	77,131.0	3		
Status 3	106.4	< 1	0.0	0	236,955.9	13		
Status 4	1,938,525.5	83	1,247.9	< 1	1,939,934.5	83		
Total	1,938,631.9	83	1,247.9	< 1	2,259,089.7	100		

GAP Status 1: An area having permanent protection from conversion of natural land cover and a mandated management plan in operation to maintain a natural state within which disturbance events (of natural type, frequency, and intensity) are allowed to proceed without interference or are mimicked through management.

GAP Status 2: An area having permanent protection from conversion of natural land cover and a mandated management plan in operation to maintain a primarily natural state, but which may receive use or management practices that degrade the quality of existing natural communities.

GAP Status 3: An area having permanent protection from conversion of natural land cover for the majority of the area, but subject to extractive uses of either a broad, low-intensity type or localized intense type. It also confers protection to federally listed endangered and threatened species throughout the area.

GAP Status 4: Lack of irrevocable easement or mandate to prevent conversion of natural habitat types to anthropogenic habitat types. Allows for intensive use throughout the tract. Also includes those tracts for which the existence of such restrictions or sufficient information to establish a higher status is unknown.

## PREDICTED HABITAT MODEL(S):

### Year-round Model:

Habitat Description: The striped newt is endemic to northern Florida and the adjacent Coastal Plain of Georgia. Adult newts are terrestrial, occupying forested environments in sandhill communities, longleaf pine forest, and pine flatwoods. The efts wander, typical into high and mesophytic hammocks on well-drained soil, rosemary scrub, turkey oak, and high pine (Christman 1992; Mecham 1967). They require a breeding habitat of isolated, ephemeral ponds, such as sinkholes, cypress or bay ponds, within sandhill and flatwoods communities (Ashton 1988). They are rarely found with eastern newts. Stacy Smith, 3May05

### Hydrography Mask:

Utilizes open water features with buffer of 1000m from selected water features.

### Selected Map Units:

Functional Group	Map Unit Name
Forest/Woodland	Atlantic Coastal Plain Fall-Line Sandhills Longleaf Pine Woodland - Loblolly Modifier
Forest/Woodland	Atlantic Coastal Plain Fall-line Sandhills Longleaf Pine Woodland - Open Understory Modifier
Forest/Woodland	Atlantic Coastal Plain Fall-line Sandhills Longleaf Pine Woodland - Scrub/Shrub Understory Modifier
Forest/Woodland	Atlantic Coastal Plain Upland Longleaf Pine Woodland
Forest/Woodland	East Gulf Coastal Plain Interior Upland Longleaf Pine Woodland - Open Understory Modifier
Forest/Woodland	East Gulf Coastal Plain Interior Upland Longleaf Pine Woodland - Scrub/Shrub Modifier
Forest/Woodland	Florida Longleaf Pine Sandhill - Open Understory Modifier
Forest/Woodland	Florida Longleaf Pine Sandhill - Scrub/Shrub Understory Modifier
Wetlands	Atlantic Coastal Plain Blackwater Stream Floodplain Forest - Forest Modifier
Wetlands	Atlantic Coastal Plain Blackwater Stream Floodplain Forest - Herbaceous Modifier
Wetlands	Atlantic Coastal Plain Brownwater Stream Floodplain Forest
Wetlands	Atlantic Coastal Plain Clay-Based Carolina Bay Forested Wetland
Wetlands	Atlantic Coastal Plain Clay-Based Carolina Bay Herbaceous Wetland
Wetlands	Atlantic Coastal Plain Nonriverine Swamp and Wet Hardwood Forest - Taxodium/Nyssa Modifier
Wetlands	Atlantic Coastal Plain Northern Wet Longleaf Pine Savanna and Flatwoods
Wetlands	Atlantic Coastal Plain Sandhill Seep
Wetlands	Atlantic Coastal Plain Small Blackwater River Floodplain Forest
Wetlands	Atlantic Coastal Plain Small Brownwater River Floodplain Forest
Wetlands	Atlantic Coastal Plain Southern Wet Pine Savanna and Flatwoods
Wetlands	East Gulf Coastal Plain Interior Shrub Bog
Wetlands	East Gulf Coastal Plain Large River Floodplain Forest - Forest Modifier
Wetlands	East Gulf Coastal Plain Large River Floodplain Forest - Herbaceous Modifier
Wetlands	East Gulf Coastal Plain Near-Coast Pine Flatwoods - Offsite Hardwood Modifier
Wetlands	East Gulf Coastal Plain Near-Coast Pine Flatwoods - Open Understory Modifier
Wetlands	East Gulf Coastal Plain Near-Coast Pine Flatwoods - Scrub/Shrub Understory Modifier
Wetlands	East Gulf Coastal Plain Small Stream and River Floodplain Forest
Wetlands	East Gulf Coastal Plain Southern Depression Pondshore
Wetlands	Southern Coastal Plain Blackwater River Floodplain Forest
Wetlands	Southern Coastal Plain Nonriverine Basin Swamp
Wetlands	Southern Coastal Plain Nonriverine Cypress Dome
Wetlands	Southern Coastal Plain Seepage Swamp and Baygall

**CITATIONS:** Ashton, R. E., Jr., and P. S. Ashton. 1988. Handbook of reptiles and amphibians of Florida. Part Three. The amphibians. Windward Publ. Co., Miami.

Christman, S.P. and D.B. Means. 1992. Striped newt (*Notophthalmus perstriatus*). Pages 62-65 in Rare and endangered biota of Florida: reptiles and amphibians (P. Moler, ed.). Gainesville, University Press of Florida.

Mecham, J. S. 1967. Newt. Catalogue of American Amphibians and Reptiles. Riemer, W. J. ed. Bethesda, MD; p. 53.1-53.4.

Petranka, J. W. 1998. Salamanders of the United States and Canada. Washington DC: Smithsonian Inst. Press.

For more information:: SE-GAP Analysis Project / BaSIC  
127 David Clark Labs  
Dept. of Biology, NCSU  
Raleigh, NC 27695-7617  
(919) 513-2853  
[www.basic.ncsu.edu/segap](http://www.basic.ncsu.edu/segap)

Compiled: 15 September 2011

This data was compiled and/or developed  
by the Southeast GAP Analysis Project at  
The Biodiversity and Spatial Information  
Center, North Carolina State University.