



SOUTHEAST GAP ANALYSIS PROJECT



Species Modeling Report

American Coot

Fulca americana

Taxa: Avian

Order: Gruiformes

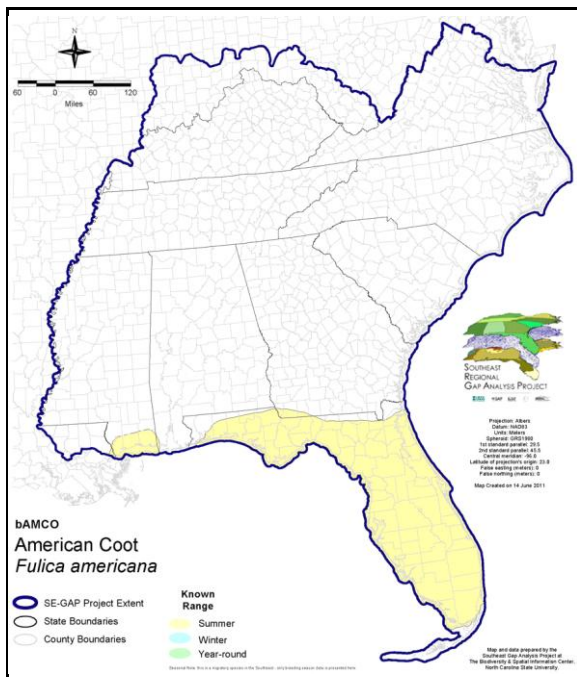
Family: Rallidae

SE-GAP Spp Code: **bAMCO**

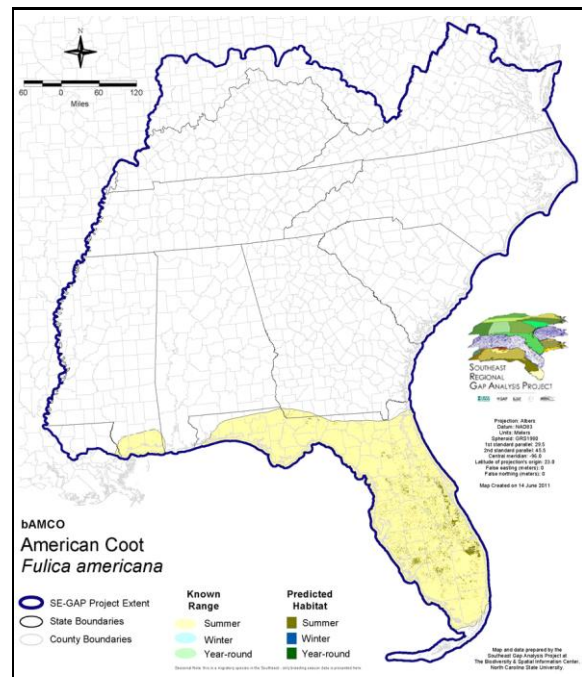
ITIS Species Code: 176292

NatureServe Element Code: ABNME14020

KNOWN RANGE:



PREDICTED HABITAT:



Range Map Link: http://www.basic.ncsu.edu/segap/datazip/maps/SE_Range_bAMCO.pdf

Predicted Habitat Map Link: http://www.basic.ncsu.edu/segap/datazip/maps/SE_Dist_bAMCO.pdf

GAP Online Tool Link: <http://www.gapservice.ncsu.edu/segap/segap/index2.php?species=bAMCO>

Data Download: http://www.basic.ncsu.edu/segap/datazip/region/vert/bAMCO_se00.zip

PROTECTION STATUS:

Reported on March 14, 2011

Federal Status: ---

State Status: AL (GB), ID (G), ID (G), KY (E), KY (E), ME (SC), NJ (D), NV (YES), NY (PB - GS), RI (Not Listed), UT (None), BC (4 (2005)), ON (NAR), QC (Non suivie)

NS Global Rank: G5

NS State Rank: AK (S2B,S2N), AL (S2B,S5N), AR (S3B,S4N), AZ (S5), CA (SNR), CO (S5B,S4N), CT (SNA), DC (S2N), DE (S1B), DE (S1B), FL (SNRB,SNRN), GA (S4), HI (SNA), IA (S5B,S5N), ID (S5B), ID (S5B), IL (S4), IN (S4B,S2N), KS (S3B), KY (S1B), KY (S1B), LA (S3S4B,S5N), MA (SXB,S3N), MA (SXB,S3N), MD (S3N), ME (S2?B), MI (S3S4), MN (SNRB), MN (SNRB), MO (SNRB,SNRN,SNRM), MS (S5B,S5N), MT (S5B), MT (S5B), NC (S5N), NC (S5N), ND (SNRB), NE (SNRN), NH (SNA), NJ (S4B,S4N), NM (S5B,S5N), NV (S5), NY (S3), OH (S2), OK (S3S5), OR (S5), PA (S3B,S3N), RI (SNA), SC (SHB,SNRN), SC (SHB,SNRN), SD (S5B), SD (S5B), TN (S2B), TX (S4B,S5N), UT (S5), VA (S1B,S5N), VT (SNRB,S2N), VT (SNRB,S2N), WA (S4B), WI (S5B), WI (S5B), WV (S1B,S3N), WY (S5B,S5N), AB (S5), BC (S4B), LB (SNA), MB (S5B), MB (S5B), NB (S2B), NF (SNA), NS (S2B), NT (SNRB), ON (S4B), PE (S2B), QC (S4B), SK (S5B), YT (S4B)

SUMMARY OF PREDICTED HABITAT BY MANAGMENT AND GAP PROTECTION STATUS:

	US FWS		US Forest Service		Tenn. Valley Author.		US DOD/ACOE	
	ha	%	ha	%	ha	%	ha	%
Status 1	4,273.7	< 1	0.0	0	0.0	0	0.0	0
Status 2	212.0	< 1	370.4	< 1	0.0	0	0.0	0
Status 3	0.0	0	1,638.3	< 1	0.0	0	5,218.6	< 1
Status 4	0.0	0	0.0	0	0.0	0	0.0	0
Total	4,485.7	< 1	2,008.7	< 1	0.0	0	5,218.6	< 1
	US Dept. of Energy		US Nat. Park Service		NOAA		Other Federal Lands	
	ha	%	ha	%	ha	%	ha	%
Status 1	0.0	0	1,213.7	< 1	0.0	0	1,204.2	< 1
Status 2	0.0	0	583.4	< 1	537.3	< 1	3.8	< 1
Status 3	0.0	0	10,639.4	2	0.0	0	0.0	0
Status 4	0.0	0	0.0	0	0.0	0	0.0	0
Total	0.0	0	12,436.6	2	537.3	< 1	1,208.0	< 1
	Native Am. Reserv.		State Park/Hist. Park		State WMA/Gameland		State Forest	
	ha	%	ha	%	ha	%	ha	%
Status 1	0.0	0	0.0	0	0.0	0	0.0	0
Status 2	0.0	0	14.9	< 1	68,809.7	12	0.0	0
Status 3	0.0	0	90,286.7	15	3.9	< 1	9,740.9	2
Status 4	0.0	0	0.0	0	0.0	0	0.0	0
Total	0.0	0	90,301.7	15	68,813.6	12	9,740.9	2
	State Coastal Reserve		ST Nat.Area/Preserve		Other State Lands		Private Cons. Easemt.	
	ha	%	ha	%	ha	%	ha	%
Status 1	0.0	0	0.0	0	0.0	0	0.0	0
Status 2	65.4	< 1	887.9	< 1	0.0	0	438.8	< 1
Status 3	0.0	0	3,839.3	< 1	592.3	< 1	12,605.1	2
Status 4	0.0	0	0.0	0	0.0	0	0.0	0
Total	65.4	< 1	4,727.2	< 1	592.3	< 1	13,044.0	2
	Private Land - No Res.		Water		Overall Total			
	ha	%	ha	%	ha	%		
Status 1	0.0	0	0.0	0	6,691.6	1		
Status 2	0.0	0	0.0	0	71,923.7	12		
Status 3	< 0.1	< 1	0.0	0	134,564.6	23		
Status 4	365,968.0	62	11,661.4	2	377,629.4	64		
Total	365,968.1	62	11,661.4	2	590,809.2	100		

GAP Status 1: An area having permanent protection from conversion of natural land cover and a mandated management plan in operation to maintain a natural state within which disturbance events (of natural type, frequency, and intensity) are allowed to proceed without interference or are mimicked through management.

GAP Status 2: An area having permanent protection from conversion of natural land cover and a mandated management plan in operation to maintain a primarily natural state, but which may receive use or management practices that degrade the quality of existing natural communities.

GAP Status 3: An area having permanent protection from conversion of natural land cover for the majority of the area, but subject to extractive uses of either a broad, low-intensity type or localized intense type. It also confers protection to federally listed endangered and threatened species throughout the area.

GAP Status 4: Lack of irrevocable easement or mandate to prevent conversion of natural habitat types to anthropogenic habitat types. Allows for intensive use throughout the tract. Also includes those tracts for which the existence of such restrictions or sufficient information to establish a higher status is unknown.

PREDICTED HABITAT MODEL(S):

Summer Model:

Habitat Description: American coots are found in water lined with emergent vegetation and they prefer fresh water (Taylor 1998) but will also nest in brackish water. Habitats include ponds, lakes, impoundments, brackish estuaries (Fussell 1994), wet meadows, and marshes (Harrison 1975). They will use seasonal wetlands if water levels are sufficiently high for nesting. Requires less vegetation than does the Common Moorhen (Taylor 1998). Breeding reported on more open lakes and ponds than in winter with at least some marsh vegetation present. Coot avoid wooded areas (Hamel 1992).

The nest is built as an island of floating dead vegetation in water about 1 to 4 feet deep (Harrison 1975), and located 3 to 50 feet from open water in dense vegetation or is sometimes in the open, resting on matted vegetation (Taylor 1998).

Quoted directly from existing state habitat notes - K. Cook, 16Feb05

Hydrography Mask:

Freshwater Only

Utilizes open water features with buffers of 250m from and 60m into selected water features.

Utilizes wet vegetation features with buffers of 250m from and unlimited into selected vegetation features.

Selected Map Units:

Functional Group	Map Unit Name
Coastal Dune & Freshwater Wetland	Atlantic and Gulf Coastal Plain Interdunal Wetland
Freshwater Tidal Marsh & Wetland	Atlantic Coastal Plain Central Fresh-Oligohaline Tidal Marsh
Freshwater Tidal Marsh & Wetland	Florida Big Bend Fresh-Oligohaline Tidal Marsh
Water	Open Water (Fresh)
Wetlands	Atlantic Coastal Plain Clay-Based Carolina Bay Herbaceous Wetland
Wetlands	Atlantic Coastal Plain Sandhill Seep
Wetlands	Central Florida Herbaceous Pondshore
Wetlands	Central Florida Herbaceous Seep
Wetlands	East Gulf Coastal Plain Southern Depression Pondshore
Wetlands	Floridian Highlands Freshwater Marsh
Wetlands	South Florida Freshwater Slough and Gator Hole
Wetlands	South Florida Pond-Apple/Popash Slough
Wetlands	Southern Coastal Plain Herbaceous Seepage Bog

CITATIONS: American Ornithologists' Union (AOU), Committee on Classification and Nomenclature. 1983. Check-list of North American Birds. Sixth Edition. American Ornithologists' Union, Allen Press, Inc., Lawrence, Kansas.

Banks, R. C. 1995. Taxonomic Validation for Bird Species on the U.S. Fish and Wildlife Service Category 2 Species List. In Biological Survey Project, Patuxent Environmental Research Center, National Biological Service (compilers). Taxonomic Review of Cate

Bent, A. C. 1926. Life histories of North American marsh birds. U.S. National Museum Bulletin No. 135. [reprint. 1963. Dover Publications, Inc., New York, New York].

Berger, A.J. 1981. Hawaiian Birdlife. Second Edition. University of Hawaii Press, Honolulu, Hawaii. xv + 260 pp.

Brisbin, Jr., I. Lehr and Thomas B. Mowbray. 2002. American Coot (*Fulica americana*), The Birds of North America Online (A. Poole, Ed.). Ithaca: Cornell Lab of Ornithology; Retrieved from the Birds of North America Online: <http://bna.birds.cornell.edu/bna/>

Byrd, G. V., et al. 1985. Notes on the breeding biology of the Hawaiian race of the American coot. 'Elepaio 45:57-63.

Eddleman, W. R., F. L. Knopf, B. Meanley, F. A. Reid, and R. Zembal. 1988. Conservation of North American rallids. Wilson Bulletin 100:458-475.

Fussell, J. III and M. Lyons. 1990. Birds of the Outer Banks [pamphlet]. Eastern National Parks and Monument Association Coastal Wildlife Refuge Society.

Fussell, J.O. III. 1994. A birder's guide to coastal North Carolina. Chapel Hill and London: The University of North Carolina Press.

Hamel, P. B. 1992. The land manager's guide to the birds of the south. The Nature Conservancy, Chapel Hill, North Carolina. 367 pp + several appendices.

Harrison, H.H. 1975. A field guide to bird's nests in the U.S. east of the Mississippi River. Houghton Mifflin Company, Boston, Massachusetts. 257 p.

- Harrison, H.H. 1979. A field guide to western birds' nests. Houghton Mifflin Company, Boston. 279 pp.
- Lang, A. 1991. Status report on the American coot. Committee on the Status of Endangered Wildlife in Canada. 24 pp.
- Lang, A. L. 1991. Status of the American coot, *FULICA AMERICANA*, in Canada. *Can. Field-Nat.* 105:530-541.
- Potter, E. F., J. F. Parnell, and R. P. Teulings. 1980. Birds of the Carolinas. Univ. North Carolina Press, Chapel Hill. 408 pp.
- Pratt, H. D. 1987. Occurrence of the North American coot (*FULICA AMERICANA AMERICANA*) in the Hawaiian Islands, with comments on the taxonomy of the Hawaiian coot. *Elepaio* 47(3):25-28.
- Raffaele, H.A. 1983. A guide to the birds of Puerto Rico and the Virgin Islands. Fondo Educativo Interamericano, San Juan, Puerto Rico. 255 pp.
- Scott, J. M., and C. B. Kepler. 1985. Distribution and abundance of Hawaiian native birds: a status report. Pages 43-70 in Temple, S. A. (editor). *Bird Conservation 2*. University of Wisconsin Press, Madison, Wisconsin. 181 pp.
- Stiles, F.G., and A.F. Skutch. 1989. A guide to the birds of Costa Rica. Comstock Publ. Associates, Cornell University Press, Ithaca, New York. 511 pp.
- Sutherland, J. M. 1991. Effects of drought on American coot, *FULICA AMERICANA*, reproduction in Saskatchewan parklands. *Canadian Field-Naturalist* 105:267-273.
- Taylor, B. 1998. *Rails. A guide to the rails, crakes, gallinules, and coots of the world*. New Haven and London: Yale University Press. 600p.
- Terres, J.K. 1980. *The Audubon Society encyclopedia of North American birds*. Alfred A. Knopf, New York.

For more information:: SE-GAP Analysis Project / BaSIC
127 David Clark Labs
Dept. of Biology, NCSU
Raleigh, NC 27695-7617
(919) 513-2853
www.basic.ncsu.edu/segap

Compiled: 15 September 2011

This data was compiled and/or developed
by the Southeast GAP Analysis Project at
The Biodiversity and Spatial Information
Center, North Carolina State University.