



SOUTHEAST GAP ANALYSIS PROJECT



Species Modeling Report

Anhinga

Anhinga anhingae

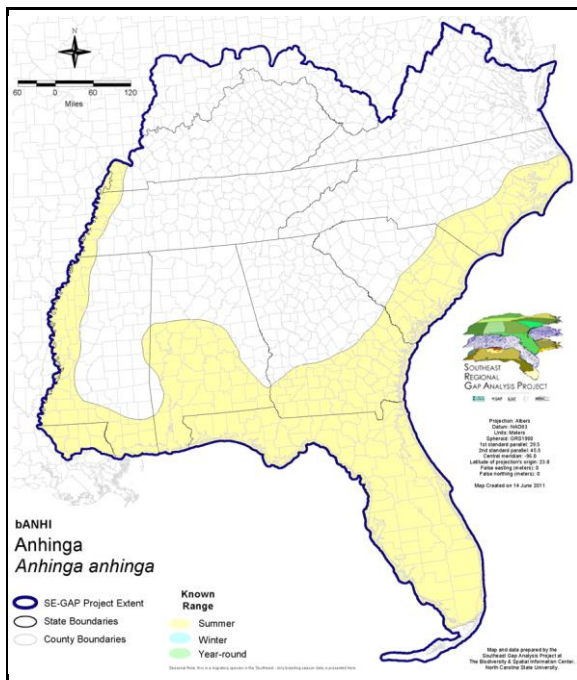
Taxa: Avian
 Order: Pelecaniformes
 Family: Anhingidae

SE-GAP Spp Code: **bANHI**

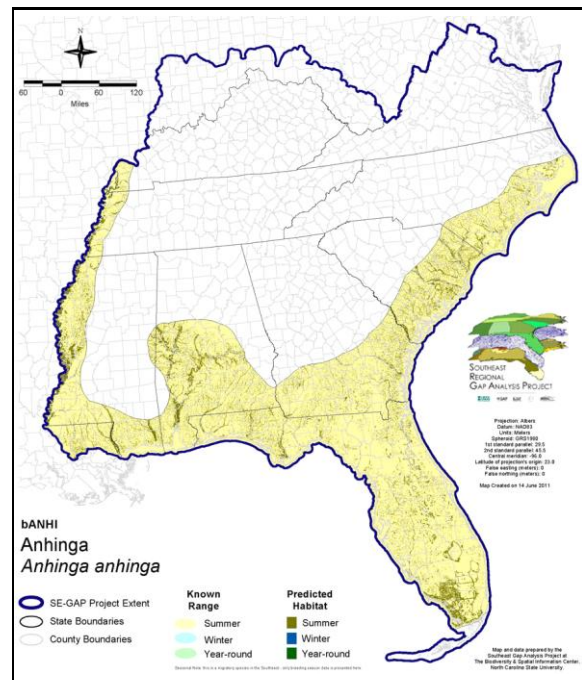
ITIS Species Code: 174755

NatureServe Element Code: ABNFE01010

KNOWN RANGE:



PREDICTED HABITAT:



Range Map Link: http://www.basic.ncsu.edu/segap/datazip/maps/SE_Range_bANHI.pdf

Predicted Habitat Map Link: http://www.basic.ncsu.edu/segap/datazip/maps/SE_Dist_bANHI.pdf

GAP Online Tool Link: <http://www.gapservice.ncsu.edu/segap/segap/index2.php?species=bANHI>

Data Download: http://www.basic.ncsu.edu/segap/datazip/region/vert/bANHI_se00.zip

PROTECTION STATUS:

Reported on March 14, 2011

Federal Status: ---

State Status: AR (W), AR (W), KY (X), NC (W2), NC (W2), TN (D)

NS Global Rank: G5

NS State Rank: AL (S3B,S4N), AR (S1B), AR (S1B), AZ (SNA), CA (SNA), CO (SNA), FL (SNR), GA (S5), IL (SNA), IN (SNA), KS (SNA), KY (SXB), LA (S5B), MD (SNA), MO (SX), MS (S3B,S1N), NC (S3B), NC (S3B), NM (SNA), OK (S1B), SC (SNRB,SNRN), TN (S1B), TX (S4B), VA (SNA), WI (SNA), WV (SNA), ON (SNA)

SUMMARY OF PREDICTED HABITAT BY MANAGMENT AND GAP PROTECTION STATUS:

	US FWS		US Forest Service		Tenn. Valley Author.		US DOD/ACOE	
	ha	%	ha	%	ha	%	ha	%
Status 1	21,024.3	< 1	4,147.5	< 1	0.0	0	0.0	0
Status 2	55,086.9	1	11,717.9	< 1	0.0	0	0.0	0
Status 3	0.0	0	98,461.1	2	0.0	0	52,431.3	< 1
Status 4	12.1	< 1	0.0	0	0.0	0	0.0	0
Total	76,123.3	1	114,326.5	2	0.0	0	52,431.3	< 1
	US Dept. of Energy		US Nat. Park Service		NOAA		Other Federal Lands	
	ha	%	ha	%	ha	%	ha	%
Status 1	0.0	0	193,596.0	4	3.2	< 1	1,045.5	< 1
Status 2	0.0	0	756.5	< 1	12,616.9	< 1	3.2	< 1
Status 3	438.8	< 1	160,252.8	3	0.0	0	1,131.8	< 1
Status 4	0.0	0	0.0	0	0.0	0	0.0	0
Total	438.8	< 1	354,605.3	7	12,620.2	< 1	2,180.6	< 1
	Native Am. Reserv.		State Park/Hist. Park		State WMA/Gameland		State Forest	
	ha	%	ha	%	ha	%	ha	%
Status 1	0.0	0	50.8	< 1	0.0	0	0.0	0
Status 2	0.0	0	530.9	< 1	196,564.3	4	0.0	0
Status 3	2.6	< 1	177,802.1	3	34,438.0	< 1	41,333.2	< 1
Status 4	0.0	0	0.0	0	5,697.7	< 1	5.5	< 1
Total	2.6	< 1	178,383.8	3	236,700.0	4	41,338.7	< 1
	State Coastal Reserve		ST Nat.Area/Preserve		Other State Lands		Private Cons. Easemt.	
	ha	%	ha	%	ha	%	ha	%
Status 1	0.0	0	1,779.4	< 1	0.0	0	0.0	0
Status 2	5,388.8	< 1	18,431.4	< 1	0.0	0	346.3	< 1
Status 3	0.0	0	3,185.0	< 1	2,899.4	< 1	28,175.3	< 1
Status 4	0.0	0	0.0	0	130.2	< 1	0.0	0
Total	5,388.8	< 1	23,395.8	< 1	3,029.6	< 1	28,521.6	< 1
	Private Land - No Res.		Water		Overall Total			
	ha	%	ha	%	ha	%	ha	%
Status 1	0.0	0	0.0	0	221,646.7 4			
Status 2	0.0	0	0.0	0	301,443.1 6			
Status 3	15.8	< 1	0.0	0	600,567.3 13			
Status 4	4,062,342.3	76	40,262.5	< 1	4,114,136.0 77			
Total	4,062,358.2	76	40,262.5	< 1	5,237,793.1 100			

GAP Status 1: An area having permanent protection from conversion of natural land cover and a mandated management plan in operation to maintain a natural state within which disturbance events (of natural type, frequency, and intensity) are allowed to proceed without interference or are mimicked through management.

GAP Status 2: An area having permanent protection from conversion of natural land cover and a mandated management plan in operation to maintain a primarily natural state, but which may receive use or management practices that degrade the quality of existing natural communities.

GAP Status 3: An area having permanent protection from conversion of natural land cover for the majority of the area, but subject to extractive uses of either a broad, low-intensity type or localized intense type. It also confers protection to federally listed endangered and threatened species throughout the area.

GAP Status 4: Lack of irrevocable easement or mandate to prevent conversion of natural habitat types to anthropogenic habitat types. Allows for intensive use throughout the tract. Also includes those tracts for which the existence of such restrictions or sufficient information to establish a higher status is unknown.

PREDICTED HABITAT MODEL(S):

Summer Model:

Habitat Description: Fairly common in FL and rarer to the north along the coastal plain. Colonial nesting sites are in trees or shrubs near the edges of open or semi-open freshwater. Forages near, shallow, slow-moving waters, lakes and swamps (including lagoons and mangrove swamps in FL). M. Rubino, 9nov04.

Hydrography Mask:

Utilizes flowing water features with buffers of 250m from and 1000m into selected water features.

Utilizes open water features with buffers of 250m from and 1000m into selected water features.

Utilizes wet vegetation features with buffers of 250m from and 1000m into selected vegetation features.

Selected Map Units:

Functional Group	Map Unit Name
Brackish Tidal Marsh & Wetland	South Florida Everglades Sawgrass Marsh
Brackish Tidal Marsh & Wetland	South Florida Mangrove Swamp
Brackish Tidal Marsh & Wetland	Southwest Florida Perched Barriers Salt Swamp and Lagoon - Mangrove Modifier
Freshwater Tidal Marsh & Wetland	Florida Big Bend Fresh-Oligohaline Tidal Marsh
Water	Open Water (Aquaculture)
Water	Open Water (Fresh)
Wetlands	Atlantic Coastal Plain Blackwater Stream Floodplain Forest - Forest Modifier
Wetlands	Atlantic Coastal Plain Blackwater Stream Floodplain Forest - Herbaceous Modifier
Wetlands	Atlantic Coastal Plain Brownwater Stream Floodplain Forest
Wetlands	Atlantic Coastal Plain Clay-Based Carolina Bay Herbaceous Wetland
Wetlands	Atlantic Coastal Plain Depression Pondshore
Wetlands	Atlantic Coastal Plain Large Natural Lakeshore
Wetlands	Atlantic Coastal Plain Nonriverine Swamp and Wet Hardwood Forest - Taxodium/Nyssa Modifier
Wetlands	Atlantic Coastal Plain Nonriverine Swamp and Wet Hardwood Forest - Oak Dominated Modifier
Wetlands	Atlantic Coastal Plain Northern Pondshore
Wetlands	Atlantic Coastal Plain Small Blackwater River Floodplain Forest
Wetlands	Atlantic Coastal Plain Small Brownwater River Floodplain Forest
Wetlands	Central Florida Herbaceous Pondshore
Wetlands	East Gulf Coastal Plain Large River Floodplain Forest - Forest Modifier
Wetlands	East Gulf Coastal Plain Large River Floodplain Forest - Herbaceous Modifier
Wetlands	East Gulf Coastal Plain Northern Depression Pondshore
Wetlands	East Gulf Coastal Plain Small Stream and River Floodplain Forest
Wetlands	East Gulf Coastal Plain Southern Depression Pondshore
Wetlands	Lower Mississippi River Bottomland and Floodplain Forest
Wetlands	Lower Mississippi River Bottomland Depressions - Forest Modifier
Wetlands	Lower Mississippi River Bottomland Depressions - Herbaceous Modifier
Wetlands	Mississippi River Low Floodplain (Bottomland) Forest
Wetlands	Mississippi River Riparian Forest
Wetlands	South Florida Bayhead Swamp
Wetlands	South Florida Cypress Dome
Wetlands	South Florida Pond-Apple/Popash Slough
Wetlands	Southern Coastal Plain Blackwater River Floodplain Forest
Wetlands	Southern Coastal Plain Spring-run Stream Aquatic Vegetation

CITATIONS: American Ornithologists' Union (AOU), Committee on Classification and Nomenclature. 1983. Check-list of North American Birds. Sixth Edition. American Ornithologists' Union, Allen Press, Inc., Lawrence, Kansas.

Ehrlich, P.R., D.S. Dobkin, and D. Wheye. 1988. The birder's handbook: a field guide to the natural history of North American birds. Simon and Shuster, Inc., New York. xxx + 785 pp.

Fussell, J.O. III. 1994. A birder's guide to coastal North Carolina. Chapel Hill and London: The University of North Carolina Press.

Harrison, H.H. 1979. A field guide to western birds' nests. Houghton Mifflin Company, Boston. 279 pp.

Johnsgard, P. A. 1993. Cormorants, darters, and pelicans of the world. Smithsonian Inst. Press, Washington, D.C. xiv + 445 pp.

Kaufman K. 1996. Lives of North American Birds. Boston, New York: Houghton Mifflin Company.

Palmer, R. S. (editor). 1962. Handbook of North American birds. Vol. 1. Loons through flamingos. Yale University Press, New Haven. 567 pp.

Potter, E. F., J. F. Parnell, and R. P. Teulings. 1980. Birds of the Carolinas. Univ. North Carolina Press, Chapel Hill. 408 pp.

Root, T. 1988. Atlas of wintering North American birds: An analysis of Christmas Bird Count data. University of Chicago Press. 336 pp.

Spendlow, J.A., and S.R. Patton. 1988. National atlas of coastal waterbird colonies in the contiguous United States: 1976-1982. U.S. Fish and Wildlife Service, Biological Report 88(5). x + 326 pp.

Terres, J.K. 1980. The Audubon Society encyclopedia of North American birds. Alfred A. Knopf, New York.

For more information:: SE-GAP Analysis Project / BaSIC
127 David Clark Labs
Dept. of Biology, NCSU
Raleigh, NC 27695-7617
(919) 513-2853
www.basic.ncsu.edu/segap

Compiled: 15 September 2011

This data was compiled and/or developed
by the Southeast GAP Analysis Project at
The Biodiversity and Spatial Information
Center, North Carolina State University.