



# SOUTHEAST GAP ANALYSIS PROJECT



## Species Modeling Report

### Brant

*Branta bernicla*

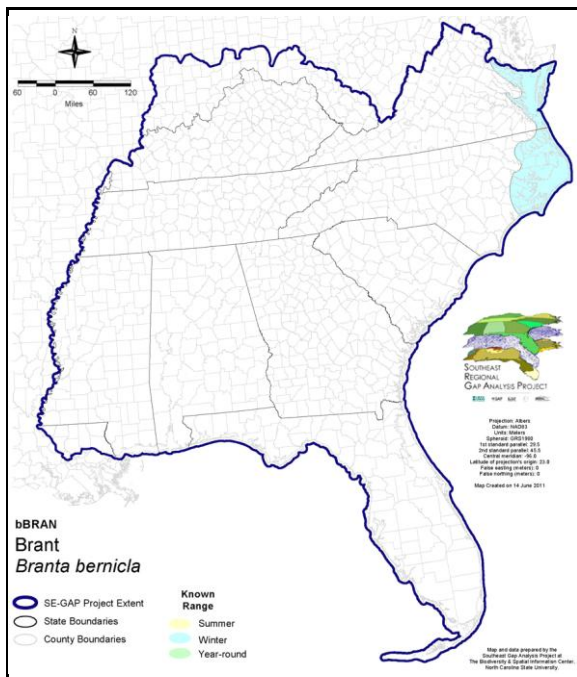
Taxa: Avian  
 Order: Anseriformes  
 Family: Anatidae

SE-GAP Spp Code: **bBRAN**

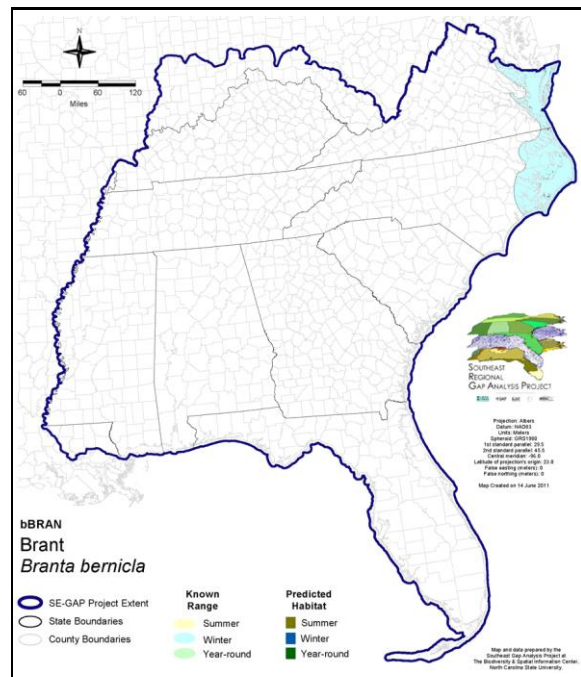
ITIS Species Code: 175011

NatureServe Element Code: ABNJB05010

#### KNOWN RANGE:



#### PREDICTED HABITAT:



Range Map Link: [http://www.basic.ncsu.edu/segap/datazip/maps/SE\\_Range\\_bBRAN.pdf](http://www.basic.ncsu.edu/segap/datazip/maps/SE_Range_bBRAN.pdf)

Predicted Habitat Map Link: [http://www.basic.ncsu.edu/segap/datazip/maps/SE\\_Dist\\_bBRAN.pdf](http://www.basic.ncsu.edu/segap/datazip/maps/SE_Dist_bBRAN.pdf)

GAP Online Tool Link: <http://www.gapservice.ncsu.edu/segap/segap/index2.php?species=bBRAN>

Data Download: [http://www.basic.ncsu.edu/segap/datazip/region/vert/bBRAN\\_se00.zip](http://www.basic.ncsu.edu/segap/datazip/region/vert/bBRAN_se00.zip)

#### PROTECTION STATUS:

Reported on March 14, 2011

Federal Status: ---

State Status: AL (GB), CA (None), ID (G), KY (N), NV (YES), NY (PB - GS), RI (Not Listed), UT (None), BC (3 (2005)), QC (Non suivie)

NS Global Rank: G5

NS State Rank: AK (S4B), AL (SNA), AZ (SNA), CA (SNR), CO (SNA), CT (SNA), DC (SNA), DE (S4N), FL (SNA), GA (SNA), HI (SNA), ID (SNA), IL (SNA), IN (SNA), KS (SNA), KY (SNA), LA (SNA), MA (S4N), MD (S3N), ME (S3S4N), MI (SNA), MN (SNA), MO (SNA), MS (SNA), MT (SNA), NC (S3N), ND (SNA), NH (SNA), NJ (S4N), NM (SNA), NV (SNA), NY (SNRN), OH (SNA), OK (SNA), OR (S4), PA (SNA), RI (SNA), SC (SNA), SD (SNA), TX (S2), UT (SNA), VA (SNRN), VT (S2N), WA (S3N), WI (SNA), WY (SNA), AB (SNA), BC (S3M), LB (SNA), MB (SNA), NB (S2S3M,S2S3N), NB (S2S3M,S2S3N), NF (SNA), NS (S2M), NT (SNRB), NU (SNRB), ON (S4N), ON (S4N), PE (SNA), QC (S4B), SK (SNA), YT (S1B,S3M)

**SUMMARY OF PREDICTED HABITAT BY MANAGMENT AND GAP PROTECTION STATUS:**

	US FWS		US Forest Service		Tenn. Valley Author.		US DOD/ACOE	
	ha	%	ha	%	ha	%	ha	%
Status 1	12,271.8	9	0.0	0	0.0	0	0.0	0
Status 2	11,349.8	9	0.0	0	0.0	0	0.0	0
Status 3	616.7	< 1	114.7	< 1	0.0	0	4,986.9	4
Status 4	0.0	0	0.0	0	0.0	0	0.0	0
Total	24,238.3	19	114.7	< 1	0.0	0	4,986.9	4
	US Dept. of Energy		US Nat. Park Service		NOAA		Other Federal Lands	
	ha	%	ha	%	ha	%	ha	%
Status 1	0.0	0	0.0	0	153.3	< 1	0.0	0
Status 2	0.0	0	6,538.2	5	183.1	< 1	0.0	0
Status 3	0.0	0	41.9	< 1	0.0	0	0.0	0
Status 4	0.0	0	0.0	0	0.0	0	0.0	0
Total	0.0	0	6,580.2	5	336.3	< 1	0.0	0
	Native Am. Reserv.		State Park/Hist. Park		State WMA/Gameland		State Forest	
	ha	%	ha	%	ha	%	ha	%
Status 1	0.0	0	0.0	0	0.0	0	0.0	0
Status 2	0.0	0	16.5	< 1	4,968.2	4	0.0	0
Status 3	0.0	0	455.7	< 1	3,839.8	3	0.0	0
Status 4	0.0	0	0.0	0	0.0	0	0.0	0
Total	0.0	0	472.1	< 1	8,807.9	7	0.0	0
	State Coastal Reserve		ST Nat.Area/Preserve		Other State Lands		Private Cons. Easemt.	
	ha	%	ha	%	ha	%	ha	%
Status 1	0.0	0	0.0	0	0.0	0	0.0	0
Status 2	8,477.0	7	2,788.0	2	0.0	0	0.0	0
Status 3	0.0	0	0.0	0	0.0	0	0.0	0
Status 4	0.0	0	0.0	0	0.0	0	0.0	0
Total	8,477.0	7	2,788.0	2	0.0	0	0.0	0
	Private Land - No Res.		Water		Overall Total			
	ha	%	ha	%	ha	%		
Status 1	0.0	0	0.0	0	12,425.0	10		
Status 2	0.0	0	0.0	0	34,320.8	27		
Status 3	0.0	0	0.0	0	10,055.6	7		
Status 4	71,706.8	55	1,287.5	< 1	72,994.2	56		
Total	71,706.8	55	1,287.5	< 1	129,795.7	100		

GAP Status 1: An area having permanent protection from conversion of natural land cover and a mandated management plan in operation to maintain a natural state within which disturbance events (of natural type, frequency, and intensity) are allowed to proceed without interference or are mimicked through management.

GAP Status 2: An area having permanent protection from conversion of natural land cover and a mandated management plan in operation to maintain a primarily natural state, but which may receive use or management practices that degrade the quality of existing natural communities.

GAP Status 3: An area having permanent protection from conversion of natural land cover for the majority of the area, but subject to extractive uses of either a broad, low-intensity type or localized intense type. It also confers protection to federally listed endangered and threatened species throughout the area.

GAP Status 4: Lack of irrevocable easement or mandate to prevent conversion of natural habitat types to anthropogenic habitat types. Allows for intensive use throughout the tract. Also includes those tracts for which the existence of such restrictions or sufficient information to establish a higher status is unknown.

## PREDICTED HABITAT MODEL(S):

### Winter Model:

Habitat Description: Winters primarily in marine situations that are marshy, along lagoons and estuaries, and on shallow bays (AOU 1983). Habitat use often is limited by eelgrass (ZOSTERA) availability (e.g., see Wilson and Atkinson 1995). When marine and estuarine feeding sites freeze over in areas, some brant will use nearby grassland, mainly lawns and golf courses (Ward et al. 1998). Amy Silvano 16May 05.

Ecosystem Classifiers: Brackish Tidal, Freshwater Tidal, Brackish open water, Depressional (ACP Carolina Bay herb wetland only). Amysilvano 16may05

### Hydrography Mask:

Utilizes open water features with buffers of 120m from and 120m into selected water features.

Utilizes wet vegetation features with buffer of unlimited into selected vegetation features.

### Selected Map Units:

Functional Group	Map Unit Name
Brackish Tidal Marsh & Wetland	Atlantic Coastal Plain Central Salt and Brackish Tidal Marsh
Brackish Tidal Marsh & Wetland	Atlantic Coastal Plain Embayed Region Tidal Salt and Brackish Marsh
Brackish Tidal Marsh & Wetland	Atlantic Coastal Plain Indian River Lagoon Tidal Marsh
Brackish Tidal Marsh & Wetland	Atlantic Coastal Plain Northern Sea-Level Fen
Brackish Tidal Marsh & Wetland	Atlantic Coastal Plain Northern Tidal Salt Marsh
Coastal Dune & Freshwater Wetland	Atlantic and Gulf Coastal Plain Interdunal Wetland
Freshwater Tidal Marsh & Wetland	Atlantic Coastal Plain Central Fresh-Oligohaline Tidal Marsh
Freshwater Tidal Marsh & Wetland	Atlantic Coastal Plain Embayed Region Tidal Freshwater Marsh
Freshwater Tidal Marsh & Wetland	Atlantic Coastal Plain Northern Fresh and Oligohaline Tidal Marsh
Water	Open Water (Brackish/Salt)
Wetlands	Atlantic Coastal Plain Clay-Based Carolina Bay Herbaceous Wetland

### Selected Secondary Map Units within 1000m of Primary Map Units:

Functional Group	Map Unit Name
Anthropogenic	Developed Open Space

- CITATIONS:** American Ornithologists' Union (AOU), Committee on Classification and Nomenclature. 1983. Check-list of North American Birds. Sixth Edition. American Ornithologists' Union, Allen Press, Inc., Lawrence, Kansas.
- Anthony, R. M., P. L. Flint, and J. S. Sedinger. 1991. Arctic fox removal improves nest success of black brant. *Wildl. Soc. Bull.* 19:176-184.
- Derksen, D. V., and D. H. Ward. 1993. Life history habitat needs of the black brant. U.S. Fish and Wildlife Service, Waterfowl Management Handbook, Fish and Wildlife Leaflet 13.1.15. 6 pp.
- Di Silvestro, R. L., editor. 1986. Audubon wildlife report 1986. National Audubon Society, New York. 1094 pp. [available from Academic Press, San Diego, CA].
- Einarsen, A. S. 1966. Black brant: sea goose of the Pacific coast. Univ. Washington Press. 160 pp.
- Godfrey, W.E. 1966. The birds of Canada. National Museums of Canada. Ottawa. 428 pp.
- Harrison, C. 1978. A field guide to the nests, eggs and nestlings of North American birds. Collins, Cleveland, Ohio.
- Johnson, S. R. 1993. An important early-autumn staging area for Pacific Flyway brant: Kasegaluk Lagoon, Chukchi Sea, Alaska. *J. Field Ornithol.* 64:539-548.
- Johnson, S.R., and D.R. Herter. 1989. The birds of the Beaufort Sea. BP Exploration (Alaska) Inc., Anchorage, Alaska. 372 pp.
- Kortright, F.H. 1967. The ducks, geese, and swans of North America. The Stackpole Company, Harrisburg, PA, and Wildlife Management Institute, Washington, D.C. 476 pp.
- Pratt, H.D., P.L. Bruner, and D.G. Berrett. 1987. A field guide to the birds of Hawaii and the tropical Pacific. Princeton University Press, Princeton, New Jersey. 409 pp. + 45 plates.
- Raveling, D. G. 1989. Nest-predation rates in relation to colony size of black brant. *J. Wildl. Manage.* 53:87-90.
- Root, T. 1988. Atlas of wintering North American birds: An analysis of Christmas Bird Count data. University of Chicago Press. 336 pp.

Shields, G. F. 1990. Analysis of mitochondrial DNA of Pacific black brant (*BRANTA BERNICLA NIGRICANS*). *Auk* 107:620-623.

Terres, J.K. 1980. *The Audubon Society encyclopedia of North American birds*. Alfred A. Knopf, New York.

Wilson, U. W., and J. B. Atkinson. 1995. Black brant winter and spring-staging use at two Washington coastal areas in relation to eelgrass abundance. *Condor* 97:91-98.

---

For more information:: SE-GAP Analysis Project / BaSIC  
127 David Clark Labs  
Dept. of Biology, NCSU  
Raleigh, NC 27695-7617  
(919) 513-2853  
[www.basic.ncsu.edu/segap](http://www.basic.ncsu.edu/segap)

Compiled: 15 September 2011

This data was compiled and/or developed  
by the Southeast GAP Analysis Project at  
The Biodiversity and Spatial Information  
Center, North Carolina State University.