



SOUTHEAST GAP ANALYSIS PROJECT



Species Modeling Report

Blue-winged Teal

Anas discors

Taxa: Avian

Order: Anseriformes

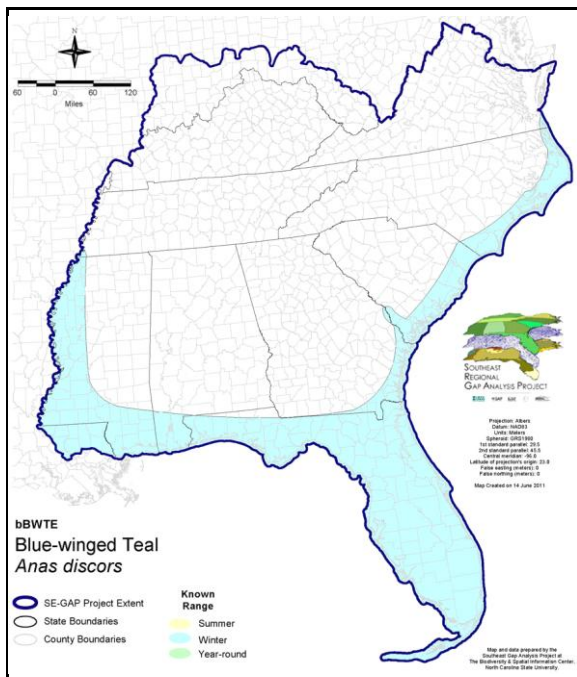
Family: Anatidae

SE-GAP Spp Code: **bbWTE**

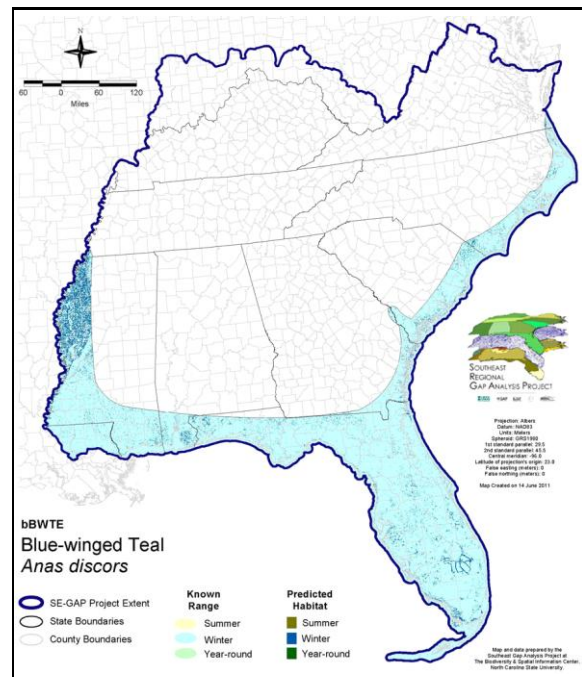
ITIS Species Code: 175086

NatureServe Element Code: ABNJB10130

KNOWN RANGE:



PREDICTED HABITAT:



Range Map Link: http://www.basic.ncsu.edu/segap/datazip/maps/SE_Range_bbWTE.pdf

Predicted Habitat Map Link: http://www.basic.ncsu.edu/segap/datazip/maps/SE_Dist_bbWTE.pdf

GAP Online Tool Link: <http://www.gapservice.ncsu.edu/segap/segap/index2.php?species=bbWTE>

Data Download: http://www.basic.ncsu.edu/segap/datazip/region/vert/bWTE_se00.zip

PROTECTION STATUS:

Reported on March 14, 2011

Federal Status: ---

State Status: AL (GB), CT (T), CT (T), ID (G), ID (G), KY (T), NC (W3), NC (W3), NV (YES), NY (PB - GS), RI (Concern), UT (None), WI (SC/M), WI (SC/M), BC (4 (2005)), BC (4 (2005)), QC (Non suivie)

NS Global Rank: G5

NS State Rank: AK (S4B), AK (S4B), AL (S2B,S4N), AR (SNA), AR (SNA), AZ (S2B,S5N), CA (SNRB,SNRN), CO (S5B), CO (S5B), CT (S2B), CT (S2B), DC (S2N), DE (S3B), FL (SNRN), FL (SNRN), GA (S5), HI (SNA), IA (S4B,S5N), ID (S5B), ID (S5B), IL (S3), IN (S4B), IN (S4B), KS (S3B,S5N), KY (S1S2B), LA (S4B,S5N), MA (S2B,S5M), MD (S2B,S3S4N), ME (S4S5B), MI (S5), MN (SNRB), MO (SNRB,SNRM), MS (S4N), MT (S5B), MT (S5B), NC (SHB,S2N), NC (SHB,S2N), ND (SNRB), NE (S5), NH (S3B), NH (S3B), NJ (S5), NM (S3B,S4N), NV (S2), NY (S5), OH (S3), OK (S4S5), OR (S4), PA (S3B), RI (S1B), SC (SNRB,SNRN), SD (S5B), SD (S5B), TN (S2B), TX (S3B,S5N), UT (S3B), VA (S1B,S2N), VT (S4B,S4N), WA (S5B), WA (S5B), WI (S4B), WI (S4B), WV (S2B), WY (S4N,S5B), AB (S5), BC (S4S5B), BC (S4S5B), LB (S3?B), MB (S5B), MB (S5B), NB (S5B), NF (S2B), NS (S4B), NT (SNRB), NU (SNR), ON (S4), ON (S4), PE (S5B), QC (S4B), SK (S5B,S5M), YT (S4B)

SUMMARY OF PREDICTED HABITAT BY MANAGMENT AND GAP PROTECTION STATUS:

	US FWS		US Forest Service		Tenn. Valley Author.		US DOD/ACOE	
	ha	%	ha	%	ha	%	ha	%
Status 1	22,282.7	1	0.3	< 1	0.0	0	0.0	0
Status 2	18,780.0	< 1	132.2	< 1	0.0	0	2.5	< 1
Status 3	195.6	< 1	1,980.5	< 1	0.0	0	9,201.6	< 1
Status 4	0.0	0	0.0	0	0.0	0	0.0	0
Total	41,258.3	2	2,112.9	< 1	0.0	0	9,204.1	< 1
	US Dept. of Energy		US Nat. Park Service		NOAA		Other Federal Lands	
	ha	%	ha	%	ha	%	ha	%
Status 1	0.0	0	47,341.6	3	514.1	< 1	1,174.4	< 1
Status 2	0.0	0	13,373.7	< 1	14,777.5	< 1	4.6	< 1
Status 3	0.0	0	2,720.3	< 1	0.0	0	19.3	< 1
Status 4	0.0	0	3.0	0	0.0	0	0.0	0
Total	0.0	0	63,438.8	3	15,291.5	< 1	1,198.3	< 1
	Native Am. Reserv.		State Park/Hist. Park		State WMA/Gameland		State Forest	
	ha	%	ha	%	ha	%	ha	%
Status 1	0.0	0	4.2	< 1	0.0	0	0.0	0
Status 2	0.0	0	27.5	< 1	26,009.4	1	0.0	0
Status 3	0.0	0	40,553.7	2	3,866.7	< 1	2,011.2	< 1
Status 4	0.0	0	0.0	0	363.6	< 1	0.0	0
Total	0.0	0	40,585.5	2	30,239.6	2	2,011.2	< 1
	State Coastal Reserve		ST Nat.Area/Preserve		Other State Lands		Private Cons. Easemt.	
	ha	%	ha	%	ha	%	ha	%
Status 1	0.0	0	248.0	< 1	0.0	0	0.0	0
Status 2	6,729.4	< 1	5,633.6	< 1	0.0	0	63.6	< 1
Status 3	0.0	0	263.9	< 1	373.3	< 1	4,707.4	< 1
Status 4	0.0	0	0.0	0	< 0.1	< 1	0.0	0
Total	6,729.4	< 1	6,145.5	< 1	373.4	< 1	4,771.0	< 1
	Private Land - No Res.		Water		Overall Total			
	ha	%	ha	%	ha	%	ha	%
Status 1	0.0	9	0.0	0	71,565.4 4			
Status 2	0.8	< 1	0.0	9	85,535.1 5			
Status 3	91.1	< 1	< 0.1	< 1	65,984.6 4			
Status 4	1,625,538.6	86	36,053.5	2	1,662,322.5 88			
Total	1,625,630.7	86	36,053.7	2	1,885,407.6 100			

GAP Status 1: An area having permanent protection from conversion of natural land cover and a mandated management plan in operation to maintain a natural state within which disturbance events (of natural type, frequency, and intensity) are allowed to proceed without interference or are mimicked through management.

GAP Status 2: An area having permanent protection from conversion of natural land cover and a mandated management plan in operation to maintain a primarily natural state, but which may receive use or management practices that degrade the quality of existing natural communities.

GAP Status 3: An area having permanent protection from conversion of natural land cover for the majority of the area, but subject to extractive uses of either a broad, low-intensity type or localized intense type. It also confers protection to federally listed endangered and threatened species throughout the area.

GAP Status 4: Lack of irrevocable easement or mandate to prevent conversion of natural habitat types to anthropogenic habitat types. Allows for intensive use throughout the tract. Also includes those tracts for which the existence of such restrictions or sufficient information to establish a higher status is unknown.

PREDICTED HABITAT MODEL(S):

Winter Model:

Habitat Description: Blue-winged teal are winter residents of the Southeast. "They prefer freshwater marshes, ponds, and sloughs, but occurs also in river pools, salt ponds, coastal lagoons, estuaries, and flooded pastures (Costa Rica, Stiles and Skutch 1989; Gammonley and Fredrickson 1995 in NatureServe 2005)." Blue-winged teal will also utilize intermediate and brackish coastal marshes, as well as agricultural fields (Rohwer et al. 2002). Amy Silvano 01Sept05

Ecosystem Classifiers: Open water, Coastal, Brackish & freshwater wetlands, lakes/Ponds/Rivers, Floodplain/Riparian (Herb mods only) as PMUs, and AG fields as AMUs. Amy Silvano 05Sept05

Customized Model: *****Do not restrict AG to hydro buffer

Hydrography Mask:

Utilizes flowing water features with buffers of 60m from and 120m into selected water features.

Utilizes open water features with buffers of 60m from and 120m into selected water features.

Selected Map Units:

Functional Group	Map Unit Name
Brackish Tidal Marsh & Wetland	Atlantic Coastal Plain Central Salt and Brackish Tidal Marsh
Brackish Tidal Marsh & Wetland	Atlantic Coastal Plain Embayed Region Tidal Salt and Brackish Marsh
Brackish Tidal Marsh & Wetland	Atlantic Coastal Plain Indian River Lagoon Tidal Marsh
Brackish Tidal Marsh & Wetland	Atlantic Coastal Plain Northern Sea-Level Fen
Brackish Tidal Marsh & Wetland	Atlantic Coastal Plain Northern Tidal Salt Marsh
Brackish Tidal Marsh & Wetland	Atlantic Coastal Plain Northern Tidal Wooded Swamp
Brackish Tidal Marsh & Wetland	Atlantic Coastal Plain Southern Tidal Wooded Swamp
Brackish Tidal Marsh & Wetland	East Gulf Coastal Plain Tidal Wooded Swamp
Brackish Tidal Marsh & Wetland	Florida Big Bend Salt-Brackish Tidal Marsh
Brackish Tidal Marsh & Wetland	Mississippi Sound Salt and Brackish Tidal Marsh
Brackish Tidal Marsh & Wetland	South Florida Everglades Sawgrass Marsh
Brackish Tidal Marsh & Wetland	South Florida Mangrove Swamp
Brackish Tidal Marsh & Wetland	Southwest Florida Perched Barriers Salt Swamp and Lagoon - Mangrove Modifier
Brackish Tidal Marsh & Wetland	Southwest Florida Perched Barriers Salt Swamp and Lagoon - Marsh Modifier
Coastal Dune & Freshwater Wetland	Atlantic and Gulf Coastal Plain Interdunal Wetland
Coastal Dune & Freshwater Wetland	Atlantic Coastal Plain Northern Dune and Maritime Grassland
Coastal Dune & Freshwater Wetland	Atlantic Coastal Plain Southern Dune and Maritime Grassland
Coastal Dune & Freshwater Wetland	East Gulf Coastal Plain Dune and Coastal Grassland
Coastal Dune & Freshwater Wetland	Southwest Florida Dune and Coastal Grassland
Freshwater Tidal Marsh & Wetland	Atlantic Coastal Plain Central Fresh-Oligohaline Tidal Marsh
Freshwater Tidal Marsh & Wetland	Atlantic Coastal Plain Embayed Region Tidal Freshwater Marsh
Freshwater Tidal Marsh & Wetland	Atlantic Coastal Plain Northern Fresh and Oligohaline Tidal Marsh
Freshwater Tidal Marsh & Wetland	Florida Big Bend Fresh-Oligohaline Tidal Marsh
Water	Open Water (Brackish/Salt)
Water	Open Water (Fresh)
Wetlands	Atlantic Coastal Plain Blackwater Stream Floodplain Forest - Herbaceous Modifier
Wetlands	Atlantic Coastal Plain Clay-Based Carolina Bay Herbaceous Wetland
Wetlands	Atlantic Coastal Plain Depression Pondshore
Wetlands	Atlantic Coastal Plain Large Natural Lakeshore
Wetlands	Atlantic Coastal Plain Northern Pondshore
Wetlands	Atlantic Coastal Plain Xeric River Dune
Wetlands	Central Appalachian Floodplain - Herbaceous Modifier
Wetlands	Central Appalachian Riparian - Herbaceous Modifier
Wetlands	Central Florida Herbaceous Pondshore
Wetlands	Cumberland Riverscour
Wetlands	East Gulf Coastal Plain Large River Floodplain Forest - Herbaceous Modifier
Wetlands	East Gulf Coastal Plain Northern Depression Pondshore
Wetlands	East Gulf Coastal Plain Southern Depression Pondshore

Wetlands	Lower Mississippi River Bottomland Depressions - Herbaceous Modifier
Wetlands	South Florida Pond-Apple/Popash Slough
Wetlands	South-Central Interior Large Floodplain - Herbaceous Modifier
Wetlands	Southern Coastal Plain Spring-run Stream Aquatic Vegetation
Wetlands	Southern Piedmont Large Floodplain Forest - Herbaceous Modifier
Wetlands	Unconsolidated Shore (Lake/River/Pond)

Selected Secondary Map Units within 1000m of Primary Map Units:	
Functional Group	Map Unit Name
Anthropogenic	Row Crop

CITATIONS:

American Ornithologists' Union (AOU), Committee on Classification and Nomenclature. 1983. Check-list of North American Birds. Sixth Edition. American Ornithologists' Union, Allen Press, Inc., Lawrence, Kansas.

Barker, W. T., et al. 1990. Effects of specialized grazing systems on waterfowl production in southcentral North Dakota. Trans. 55th North American Wildl. & Nat. Res. Conf., pp. 462-474.

Bellrose, F.C. 1976. Ducks, geese and swans of North America. Stackpole Books, Harrisburg, Pa.

Bennett, L.J. 1938. The blue-winged teal:its ecology and management. Ames, Iowa. 144pp.

Brewer, R., G.A. McPeck, and R.J. Adams, Jr. 1991. The Atlas of Breeding Birds of Michigan. Michigan State University Press, East Lansing, Michigan. xvii + 594 pp.

Ehrlich, P.R., D.S. Dobkin, and D. Wheye. 1988. The birder's handbook:a field guide to the natural history of North American birds. Simon and Shuster, Inc., New York. xxx + 785 pp.

Fussell, J.O. III. 1994. A birder's guide to coastal North Carolina. Chapel Hill and London: The University of North Carolina Press.

Gammonley, J. H., and L. H. Fredrickson. 1995. Life history and management of the blue-winged teal. USDI National Biological Service, Waterfowl Management Handbook 13.1.8. 7 pp.

Harrison, C. 1978. A field guide to the nests, eggs and nestlings of North American birds. Collins, Cleveland, Ohio.

Harrison, H.H. 1975. A field guide to bird's nests in the U.S. east of the Mississippi River. Houghton Mifflin Company, Boston, Massachusetts. 257 p.

Harrison, H.H. 1979. A field guide to western birds' nests. Houghton Mifflin Company, Boston. 279 pp.

Hilty, S.L., and W.L. Brown. 1986. A guide to the birds of Colombia. Princeton University Press, Princeton, New Jersey. 836 pp.

Jackson, G. D. 1991. Field identification of teal in North America:female-like plumages. Part I:blue-winged, cinnamon, and green-winged teal. *Birding* 23(3):124-133.

Kaufman K. 1996. Lives of North American Birds. Boston, New York: Houghton Mifflin Company.

Livezey, B. C. 1991. A phylogenetic analysis and classification of recent dabbling ducks (tribe Anatini) based on comparative morphology. *Auk* 108:471-507.

Marcy, L. E. 1986. Waterfowl nest baskets. Section 5.1.3, US Army Corps of Engineers Wildlife Resources Management Manual. Tech. Rep. EL-86-15. Waterways Expt. Station, Vicksburg, Mississippi. 16 pp.

McHenry, M.G. 1971. Breeding and post-breeding movements of blue-winged teal (*Anas discors*) in southwestern Manitoba. Ph.D. Thesis, University of Oklahoma, Norman. 67 p.

Nicholson CP. 1997. Atlas of the breeding birds of Tennessee. Knoxville: University of Tennessee Press.

Paton, P. W. C., A. Taylor, and P. R. Ashman. 1984. Blue-winged teal nesting in Hawaii. *Condor* 86:219.

Potter, E. F., J. F. Parnell, and R. P. Teulings. 1980. Birds of the Carolinas. Univ. North Carolina Press, Chapel Hill. 408 pp.

Raffaele, H.A. 1983. A guide to the birds of Puerto Rico and the Virgin Islands. Fondo Educativo Interamericano, San Juan, Puerto Rico. 255 pp.

Root, T. 1988. Atlas of wintering North American birds:An analysis of Christmas Bird Count data. University of Chicago Press. 336 pp.

Rowher, F.C., W.P. Johnson, and E.R. Loos. 2002. Blue-winged teal (*Anas discors*). In *The Birds of North America*, No. 625 (A. Poole and F. Gill, eds.). The Birds of North America, Inc., Philadelphia, PA.

Simpson MB Jr. 1992. Birds of the Blue Ridge Mountains. Chapel Hill and London: University of North Carolina Press.

Stiles, F.G., and A.F. Skutch. 1989. A guide to the birds of Costa Rica. Comstock Publ. Associates, Cornell University Press, Ithaca, New York. 511 pp.

Terres, J.K. 1980. The Audubon Society encyclopedia of North American birds. Alfred A. Knopf, New York.

U.S. Fish and Wildlife Service. 22 July 1996. Migratory bird hunting; proposed frameworks for early-season migratory bird hunting regulations. Federal Register 61(141):37994-38011.

For more information:: SE-GAP Analysis Project / BaSIC
127 David Clark Labs
Dept. of Biology, NCSU
Raleigh, NC 27695-7617
(919) 513-2853
www.basic.ncsu.edu/segap

Compiled: 15 September 2011

This data was compiled and/or developed
by the Southeast GAP Analysis Project at
The Biodiversity and Spatial Information
Center, North Carolina State University.