



# SOUTHEAST GAP ANALYSIS PROJECT



## Species Modeling Report

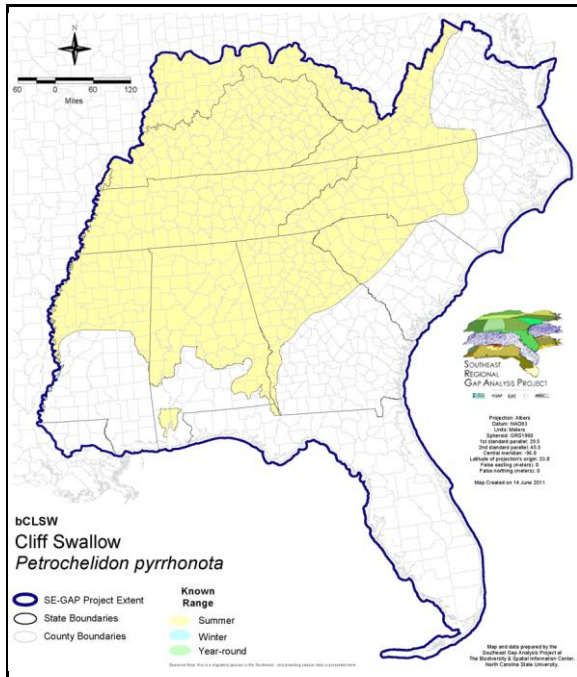
### Cliff Swallow

*Petrochelidon pyrrhonota*

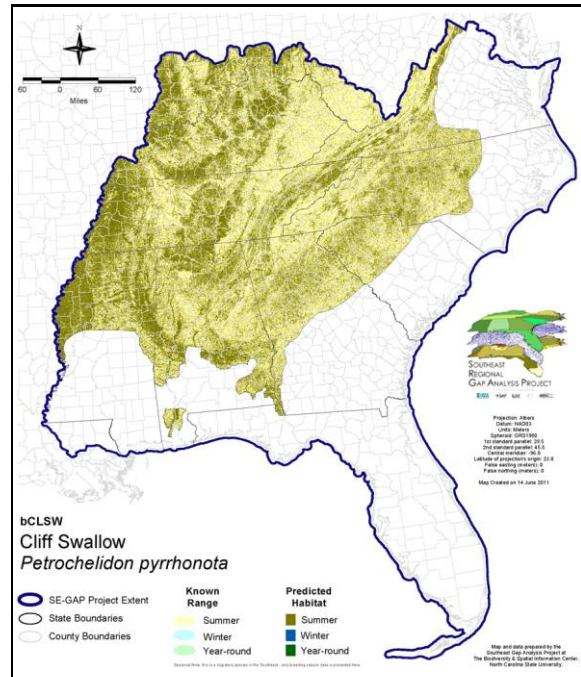
Taxa: Avian  
 Order: Passeriformes  
 Family: Hirundinidae

SE-GAP Spp Code: **bCLSW**  
 ITIS Species Code: 178455  
 NatureServe Element Code: ABPAU09010

#### KNOWN RANGE:



#### PREDICTED HABITAT:



Range Map Link: [http://www.basic.ncsu.edu/segap/datazip/maps/SE\\_Range\\_bCLSW.pdf](http://www.basic.ncsu.edu/segap/datazip/maps/SE_Range_bCLSW.pdf)

Predicted Habitat Map Link: [http://www.basic.ncsu.edu/segap/datazip/maps/SE\\_Dist\\_bCLSW.pdf](http://www.basic.ncsu.edu/segap/datazip/maps/SE_Dist_bCLSW.pdf)

GAP Online Tool Link: <http://www.gapservice.ncsu.edu/segap/segap/index2.php?species=bCLSW>

Data Download: [http://www.basic.ncsu.edu/segap/datazip/region/vert/bCLSW\\_se00.zip](http://www.basic.ncsu.edu/segap/datazip/region/vert/bCLSW_se00.zip)

#### PROTECTION STATUS:

Reported on March 14, 2011

Federal Status: ---

State Status: ID (P), ID (P), KY (N), MA (- WL), NH (SC), NJ (SC/SC), NV (YES), NY (PB), OH (N), RI (State Historical), UT (None), BC (4 (2005)), BC (4 (2005)), QC (Non suivie)

NS Global Rank: G5

NS State Rank: AK (S5B), AL (S4B), AR (S4B,S4N), AZ (S5), CA (S5), CO (S5B), CT (S3B), CT (S3B), DC (S2N,SHB), DC (S2N,SHB), DE (S1B), FL (SNA), GA (S3S4), IA (S5B,S5N), ID (S5B), ID (S5B), IL (S5), IN (S3B), KS (S4B), KY (S3S4B), LA (S4B), MA (S2B), MD (S3S4B), ME (S5B), MI (S5), MN (SNRB), MO (S4), MS (S3B), MS (S3B), MT (S5B), MT (S5B), NC (S3B), NC (S3B), ND (SNRB), NE (S5), NH (S3B), NJ (S3B,S3N), NM (S5B,S5N), NV (S5B), NY (S5), OH (S3), OK (S5B), OR (S5), PA (S5B), RI (SHB), SC (SNRB), SD (S5B), SD (S5B), TN (S4), TX (S4B), UT (S5B), VA (S3S4B), VT (S4B), VT (S4B), WA (S5B), WA (S5B), WI (S5B), WI (S5B), WV (S3B), WY (S5B), WY (S5B), AB (S5), BC (S4B), BC (S4B), MB (S5B), MB (S5B), NB (S5B), NF (S1N), NS (S4B), NT (SNRB), NU (SNRB), ON (S4B), PE (SHB), QC (S5B), SK (S5B,S5M), YT (S5B)

**SUMMARY OF PREDICTED HABITAT BY MANAGMENT AND GAP PROTECTION STATUS:**

	US FWS		US Forest Service		Tenn. Valley Author.		US DOD/ACOE	
	ha	%	ha	%	ha	%	ha	%
Status 1	7,271.4	< 1	993.2	< 1	0.0	0	0.0	0
Status 2	51,189.3	< 1	14,500.1	< 1	0.0	0	1,913.7	< 1
Status 3	670.1	< 1	117,588.2	< 1	30,920.0	< 1	96,000.8	< 1
Status 4	5.6	< 1	0.0	0	0.0	0	0.0	0
Total	59,136.3	< 1	133,081.4	< 1	30,920.0	< 1	97,914.4	< 1
	US Dept. of Energy		US Nat. Park Service		NOAA		Other Federal Lands	
	ha	%	ha	%	ha	%	ha	%
Status 1	0.0	0	8,311.3	< 1	0.0	0	0.0	0
Status 2	0.0	0	351.9	< 1	0.0	0	0.0	0
Status 3	3,147.8	< 1	19,724.2	< 1	0.0	0	582.4	< 1
Status 4	0.0	0	0.0	0	0.0	0	0.0	0
Total	3,147.8	< 1	28,387.4	< 1	0.0	0	582.4	< 1
	Native Am. Reserv.		State Park/Hist. Park		State WMA/Gameland		State Forest	
	ha	%	ha	%	ha	%	ha	%
Status 1	0.0	0	262.5	< 1	8.6	< 1	0.0	0
Status 2	0.0	0	1,212.9	< 1	113,235.1	< 1	35.0	< 1
Status 3	2,361.5	< 1	17,786.1	< 1	61,237.3	< 1	1,274.6	< 1
Status 4	0.0	0	0.0	0	13,858.7	< 1	0.0	0
Total	2,361.5	< 1	19,261.5	< 1	188,339.6	< 1	1,309.6	< 1
	State Coastal Reserve		ST Nat.Area/Preserve		Other State Lands		Private Cons. Easemt.	
	ha	%	ha	%	ha	%	ha	%
Status 1	0.0	0	1,859.1	< 1	0.0	0	0.0	0
Status 2	0.0	0	14,381.2	< 1	4.1	< 1	545.0	< 1
Status 3	0.0	0	2,881.3	< 1	1,099.1	< 1	11,856.0	< 1
Status 4	0.0	0	0.0	0	622.8	< 1	0.0	0
Total	0.0	0	19,121.6	< 1	1,726.0	< 1	12,400.9	< 1
	Private Land - No Res.		Water		Overall Total			
	ha	%	ha	%	ha	%		
Status 1	0.0	0	0.0	0	18,706.1	< 1		
Status 2	0.0	0	0.0	0	197,368.3	< 1		
Status 3	0.0	0	0.0	0	367,129.1	2		
Status 4	22,800,057.6	97	26,510.1	< 1	22,854,907.8	97		
Total	22,800,057.6	97	26,510.1	< 1	23,438,111.2	100		

GAP Status 1: An area having permanent protection from conversion of natural land cover and a mandated management plan in operation to maintain a natural state within which disturbance events (of natural type, frequency, and intensity) are allowed to proceed without interference or are mimicked through management.

GAP Status 2: An area having permanent protection from conversion of natural land cover and a mandated management plan in operation to maintain a primarily natural state, but which may receive use or management practices that degrade the quality of existing natural communities.

GAP Status 3: An area having permanent protection from conversion of natural land cover for the majority of the area, but subject to extractive uses of either a broad, low-intensity type or localized intense type. It also confers protection to federally listed endangered and threatened species throughout the area.

GAP Status 4: Lack of irrevocable easement or mandate to prevent conversion of natural habitat types to anthropogenic habitat types. Allows for intensive use throughout the tract. Also includes those tracts for which the existence of such restrictions or sufficient information to establish a higher status is unknown.

**PREDICTED HABITAT MODEL(S):**

**Summer Model:**

Habitat Description: Historically inhabited open canyons, foothills, escarpments, and river valleys that offered a vertical cliff face with a horizontal overhang for nest attachment. With the present use of artificial nesting structures such as bridges and buildings, the species is now found in a wide variety of habitats including grasslands, towns, broken forest, and riparian edge. Most colony sites are located near open fields or pastures where the birds forage, and a water source is often nearby. M. Rubino, 06Jan05.

**Hydrography Mask:**

Freshwater Only

Utilizes flowing water features with buffers of 500m from and 250m into selected water features.

Utilizes open water features with buffers of 500m from and 250m into selected water features.

Utilizes wet vegetation features with buffer of unlimited into selected vegetation features.

**Selected Map Units:**

Functional Group	Map Unit Name
Anthropogenic	Bare Sand
Anthropogenic	Bare Soil
Anthropogenic	Developed Open Space
Anthropogenic	Low Intensity Developed
Anthropogenic	Pasture/Hay
Anthropogenic	Quarry/Strip Mine/Gravel Pit
Anthropogenic	Row Crop
Anthropogenic	Successional Shrub/Scrub (Clear Cut)
Anthropogenic	Successional Shrub/Scrub (Other)
Anthropogenic	Successional Shrub/Scrub (Utility Swath)
Forest/Woodland	East Gulf Coastal Plain Black Belt Calcareous Prairie and Woodland - Woodland Modifier
Prairie	Bluegrass Basin Savanna and Woodland
Prairie	East Gulf Coastal Plain Black Belt Calcareous Prairie and Woodland
Prairie	East Gulf Coastal Plain Jackson Plain Prairie and Barrens
Prairie	East Gulf Coastal Plain Jackson Prairie and Woodland
Prairie	Eastern Highland Rim Prairie and Barrens
Prairie	Eastern Highland Rim Prairie and Barrens - Dry Modifier
Prairie	Pennyroyal Karst Plain Prairie and Barrens
Prairie	Southern Ridge and Valley Patch Prairie
Prairie	Western Highland Rim Prairie and Barrens
Rock Outcrop	Allegheny-Cumberland Sandstone Box Canyon and Rockhouse
Rock Outcrop	Central Interior Acidic Cliff and Talus
Rock Outcrop	Central Interior Calcareous Cliff and Talus
Rock Outcrop	North-Central Appalachian Acidic Cliff and Talus
Rock Outcrop	North-Central Appalachian Circumneutral Cliff and Talus
Rock Outcrop	Southern Appalachian Montane Cliff
Rock Outcrop	Southern Appalachian Spray Cliff
Rock Outcrop	Southern Interior Acid Cliff
Rock Outcrop	Southern Interior Calcareous Cliff
Rock Outcrop	Southern Piedmont Cliff
Water	Open Water (Fresh)
Wetlands	Atlantic Coastal Plain Blackwater Stream Floodplain Forest - Herbaceous Modifier
Wetlands	Central Appalachian Floodplain - Forest Modifier
Wetlands	Central Appalachian Floodplain - Herbaceous Modifier
Wetlands	Central Appalachian Riparian - Forest Modifier
Wetlands	Central Appalachian Riparian - Herbaceous Modifier
Wetlands	East Gulf Coastal Plain Large River Floodplain Forest - Forest Modifier
Wetlands	East Gulf Coastal Plain Large River Floodplain Forest - Herbaceous Modifier
Wetlands	East Gulf Coastal Plain Northern Depression Pondshore
Wetlands	East Gulf Coastal Plain Small Stream and River Floodplain Forest

Wetlands	East Gulf Coastal Plain Southern Depression Pondshore
Wetlands	Lower Mississippi River Bottomland and Floodplain Forest
Wetlands	Lower Mississippi River Bottomland Depressions - Forest Modifier
Wetlands	Lower Mississippi River Bottomland Depressions - Herbaceous Modifier
Wetlands	Mississippi River Low Floodplain (Bottomland) Forest
Wetlands	Mississippi River Riparian Forest
Wetlands	South-Central Interior Large Floodplain - Forest Modifier
Wetlands	South-Central Interior Large Floodplain - Herbaceous Modifier
Wetlands	South-Central Interior Small Stream and Riparian
Wetlands	Southern Coastal Plain Blackwater River Floodplain Forest
Wetlands	Southern Coastal Plain Spring-run Stream Aquatic Vegetation
Wetlands	Southern Piedmont Large Floodplain Forest - Forest Modifier
Wetlands	Southern Piedmont Large Floodplain Forest - Herbaceous Modifier
Wetlands	Southern Piedmont Small Floodplain and Riparian Forest
Wetlands	Unconsolidated Shore (Lake/River/Pond)

- CITATIONS:** American Ornithologists' Union (AOU), Committee on Classification and Nomenclature. 1983. Check-list of North American Birds. Sixth Edition. American Ornithologists' Union, Allen Press, Inc., Lawrence, Kansas.
- Banks, R. C., and M. R. Browning. 1995. Comments on the status of revived old names for some North American birds. *Auk* 112:633-648.
- Brown, C. R., and M. B. Brown. 1988. The costs and benefits of egg destruction by conspecifics in colonial cliff swallows. *Auk* 105:737-748.
- Bureau of Land Management. Life History Summaries.
- Byrd, M.A., and D.W. Johnston. 1991. Birds. Pages 477-537 in K. Terwilliger, coordinator. Virginia's endangered species: proceedings of a symposium. McDonald and Woodward Publ. Co., Blacksburg, Virginia.
- Ehrlich, P.R., D.S. Dobkin, and D. Wheye. 1992. Birds in jeopardy: the imperiled and extinct birds of the United States and Canada, including Hawaii and Puerto Rico. Stanford University Press, Stanford, California. 259 pp.
- Hagan, J.M., III, and D.W. Johnston, editors. 1992. Ecology and conservation of neotropical migrant landbirds. Smithsonian Institution Press, Washington, D.C. xiii + 609 pp.
- Harrison, C. 1978. A field guide to the nests, eggs and nestlings of North American birds. Collins, Cleveland, Ohio.
- Hilty, S.L., and W.L. Brown. 1986. A guide to the birds of Colombia. Princeton University Press, Princeton, New Jersey. 836 pp.
- Kaufman K. 1996. Lives of North American Birds. Boston, New York: Houghton Mifflin Company.
- Krapu, G. L. 1986. Patterns and causes of change in a cliff swallow colony during a 17-year period. *Prairie Nat.* 18:109-114.
- Nicholson CP. 1997. Atlas of the breeding birds of Tennessee. Knoxville: University of Tennessee Press.
- Phillips, A.R. 1986. The known birds of North and Middle America: distribution and variations, migrations, changes, hybrids, etc. Part I, Hirundinidae to Mimidae, Certhiidae. Published by the author, Denver, Colorado. lxi + 259 pp.
- Potter, E. F., J. F. Parnell, and R. P. Teulings. 1980. Birds of the Carolinas. Univ. North Carolina Press, Chapel Hill. 408 pp.
- Raffaele, H.A. 1983. A guide to the birds of Puerto Rico and the Virgin Islands. Fondo Educativo Interamericano, San Juan, Puerto Rico. 255 pp.
- Ridgely, R.S., and G. Tudor. 1989. The birds of South America. Vol. 1. The Oscine passerines. Univ. Texas Press, Austin. 516 pp.
- Sauer, J.R., and S. Droege. 1992. Geographical patterns in population trends of neotropical migrants in North America. Pages 26-42 in J.M. Hagan III and D.W. Johnston, editors. Ecology and conservation of neotropical migrant landbirds. Smithsonian Institution Press.
- Sheldon, F. H., and D. W. Winkler. 1993. Intergeneric phylogenetic relationships of swallows estimated by DNA-DNA hybridization. *Auk* 110:798-824.
- Silver, M. 1995. Conservation of cliff swallows in Massachusetts. *Bird Observer* 23(6):327-332.
- Simpson MB Jr. 1992. Birds of the Blue Ridge Mountains. Chapel Hill and London: University of North Carolina Press.
- Stiles, F.G., and A.F. Skutch. 1989. A guide to the birds of Costa Rica. Comstock Publ. Associates, Cornell University Press, Ithaca, New York. 511 pp.

Terres, J.K. 1980. The Audubon Society encyclopedia of North American birds. Alfred A. Knopf, New York.

Turner, A., and C. Rose. 1989. Swallows and martins an identification guide. Houghton Mifflin Co., Boston.

---

For more information:: SE-GAP Analysis Project / BaSIC  
127 David Clark Labs  
Dept. of Biology, NCSU  
Raleigh, NC 27695-7617  
(919) 513-2853  
[www.basic.ncsu.edu/segap](http://www.basic.ncsu.edu/segap)

Compiled: 15 September 2011

This data was compiled and/or developed  
by the Southeast GAP Analysis Project at  
The Biodiversity and Spatial Information  
Center, North Carolina State University.