



SOUTHEAST GAP ANALYSIS PROJECT



Species Modeling Report

Common Merganser

Mergus merganser

Taxa: Avian

Order: Anseriformes

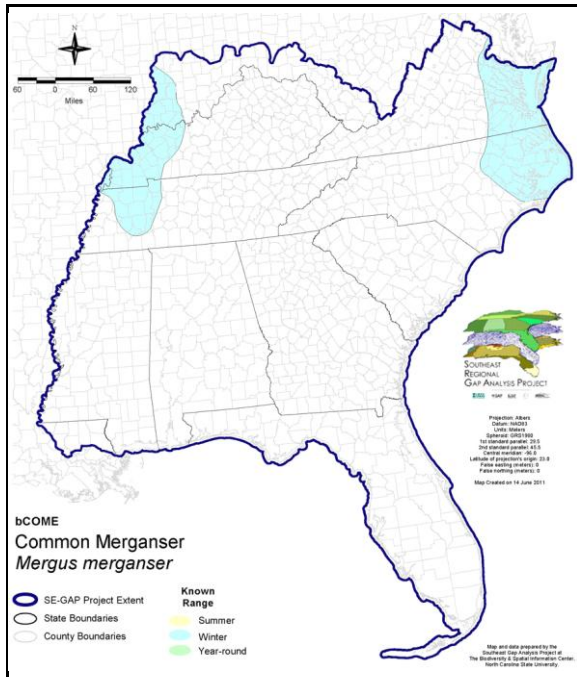
Family: Anatidae

SE-GAP Spp Code: **bCOME**

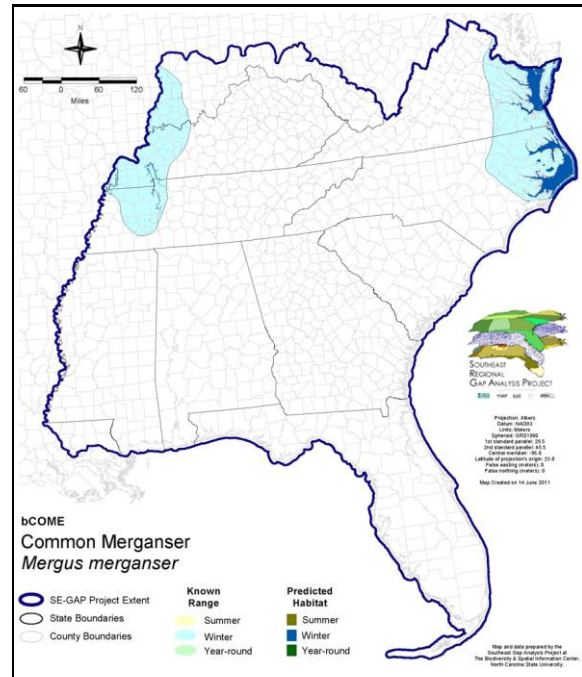
ITIS Species Code: 175185

NatureServe Element Code: ABNJB21010

KNOWN RANGE:



PREDICTED HABITAT:



Range Map Link: http://www.basic.ncsu.edu/segap/datazip/maps/SE_Range_bCOME.pdf

Predicted Habitat Map Link: http://www.basic.ncsu.edu/segap/datazip/maps/SE_Dist_bCOME.pdf

GAP Online Tool Link: <http://www.gapservice.ncsu.edu/segap/segap/index2.php?species=bCOME>

Data Download: http://www.basic.ncsu.edu/segap/datazip/region/vert/bCOME_se00.zip

PROTECTION STATUS:

Reported on March 14, 2011

Federal Status: ---

State Status: AL (GB), ID (G), KY (N), NV (YES), NY (PB - GS), RI (Not Listed), UT (None), BC (4 (2005)), QC (Non suivie)

NS Global Rank: G5

NS State Rank: AK (S5B), AL (S3N), AR (S4N), AZ (S3S4), CA (SNRB,SNRN), CO (S4B,S5N), CT (S3B), CT (S3B), DC (S3N), DE (S4N), FL (SNA), GA (S4), IA (S5N), ID (S5B,S5N), IL (SNA), IN (S3N), KS (S4N), KY (S3N), LA (S1S3N), MA (S2B,S5N), MD (S3N), ME (S5), MI (S3), MN (SNRB,SNRN), MO (SNRN), MS (SNA), MT (S5B), MT (S5B), NC (S1N), NC (S1N), ND (SU), NE (SNRN), NH (S4), NJ (S4), NM (S3B,S5N), NV (S4S5N,S4?B), NY (S5), OH (SNRN), OH (SNRN), OK (S4N), OR (S4), PA (S3S4B,S4N), RI (SNA), SC (SNRN), SD (S2B,S3N), TN (S4N), TX (S3N), UT (S2?B,S3S4N), VA (S1B,S4N), VT (S4B,S5N), WA (S3N,S4B), WI (S3B), WI (S3B), WV (S1B,S3N), WY (S4B,S5N), AB (S5), BC (S5B), LB (S5B), MB (S5B), MB (S5B), NB (S5B,S4N), NF (S4B), NS (S5B), NT (SNRB), NU (SNRB), ON (S5B,S5N), ON (S5B,S5N), PE (S4N), QC (S5B), SK (S5B,S4M,S2N), YT (S5B)

SUMMARY OF PREDICTED HABITAT BY MANAGMENT AND GAP PROTECTION STATUS:

	US FWS		US Forest Service		Tenn. Valley Author.		US DOD/ACOE	
	ha	%	ha	%	ha	%	ha	%
Status 1	96.6	7	0.0	0	0.0	0	0.0	0
Status 2	80.7	6	0.0	0	0.0	0	0.0	0
Status 3	1.6	< 1	0.0	0	0.0	0	25.7	2
Status 4	0.0	0	0.0	0	0.0	0	0.0	0
Total	178.9	12	0.0	0	0.0	0	25.7	2
	US Dept. of Energy		US Nat. Park Service		NOAA		Other Federal Lands	
	ha	%	ha	%	ha	%	ha	%
Status 1	0.0	0	0.0	0	0.0	0	0.0	0
Status 2	0.0	0	54.3	4	0.0	0	0.0	0
Status 3	0.0	0	0.0	0	0.0	0	0.0	0
Status 4	0.0	0	0.0	0	0.0	0	0.0	0
Total	0.0	0	54.3	4	0.0	0	0.0	0
	Native Am. Reserv.		State Park/Hist. Park		State WMA/Gameland		State Forest	
	ha	%	ha	%	ha	%	ha	%
Status 1	0.0	0	0.0	0	0.0	0	0.0	0
Status 2	0.0	0	0.0	0	13.4	< 1	0.0	0
Status 3	0.0	0	1.6	< 1	32.6	2	0.0	0
Status 4	0.0	0	0.0	0	0.0	0	0.0	0
Total	0.0	0	1.6	< 1	46.0	3	0.0	0
	State Coastal Reserve		ST Nat.Area/Preserve		Other State Lands		Private Cons. Easemt.	
	ha	%	ha	%	ha	%	ha	%
Status 1	0.0	0	0.0	0	0.0	0	0.0	0
Status 2	59.6	4	0.0	0	0.0	0	0.0	0
Status 3	0.0	0	0.0	0	0.0	0	0.0	0
Status 4	0.0	0	0.0	0	0.0	0	0.0	0
Total	59.6	4	0.0	0	0.0	0	0.0	0
	Private Land - No Res.		Water		Overall Total			
	ha	%	ha	%	ha	%	ha	%
Status 1	0.0	0	0.0	0	96.6	7		
Status 2	0.0	0	0.0	0	208.0	14		
Status 3	0.0	0	0.0	0	61.6	4		
Status 4	904.7	62	196.8	13	1,101.5	75		
Total	904.7	62	196.8	13	1,467.6	100		

GAP Status 1: An area having permanent protection from conversion of natural land cover and a mandated management plan in operation to maintain a natural state within which disturbance events (of natural type, frequency, and intensity) are allowed to proceed without interference or are mimicked through management.

GAP Status 2: An area having permanent protection from conversion of natural land cover and a mandated management plan in operation to maintain a primarily natural state, but which may receive use or management practices that degrade the quality of existing natural communities.

GAP Status 3: An area having permanent protection from conversion of natural land cover for the majority of the area, but subject to extractive uses of either a broad, low-intensity type or localized intense type. It also confers protection to federally listed endangered and threatened species throughout the area.

GAP Status 4: Lack of irrevocable easement or mandate to prevent conversion of natural habitat types to anthropogenic habitat types. Allows for intensive use throughout the tract. Also includes those tracts for which the existence of such restrictions or sufficient information to establish a higher status is unknown.

PREDICTED HABITAT MODEL(S):

Winter Model:

Habitat Description: Mallory and Metz (1999) describe the primary winter habitat of common mergansers as large lakes, reservoirs, rivers, coastal bays, and estuaries and harbors. Amy Silvano 08sept05

Ecosystem Classifiers: Primarily aquatic in winter. Open Water as Pmus. Amy silvano 08sept05

Hydrography Mask:

Utilizes flowing water features with buffer of unlimited into selected water features.

Utilizes open water features with buffer of unlimited into selected water features.

Selected Map Units:

Functional Group	Map Unit Name
Water	Open Water (Brackish/Salt)
Water	Open Water (Fresh)

CITATIONS: American Ornithologists' Union (AOU), Committee on Classification and Nomenclature. 1983. Check-list of North American Birds. Sixth Edition. American Ornithologists' Union, Allen Press, Inc., Lawrence, Kansas.

Bellrose, F. C. 1980. Ducks, geese and swans of North America. Stackpole Books, Harrisburg, Pennsylvania. 540 pp.

Brown, B. T. 1990. Nesting common mergansers in Chihuahua, Mexico. Southwest Nat. 35:88-89.

Mallory, M., and K. Metz. 1999. Common Merganser (*Mergus merganser*). In The Birds of North America, No. 442 (A. Poole and F. Gill, eds.). The Birds of North America, Inc., Philadelphia, PA.

Palmer, R. S., editor. 1976. Handbook of North American birds. Vol. 3. Waterfowl (concluded). Eiders, wood ducks, diving ducks, mergansers, stiff-tails. Yale Univ. Press, New Haven. 560 pp.

Terres, J.K. 1980. The Audubon Society encyclopedia of North American birds. Alfred A. Knopf, New York.

For more information:: SE-GAP Analysis Project / BaSIC
127 David Clark Labs
Dept. of Biology, NCSU
Raleigh, NC 27695-7617
(919) 513-2853
www.basic.ncsu.edu/segap

Compiled: 15 September 2011

This data was compiled and/or developed by the Southeast GAP Analysis Project at The Biodiversity and Spatial Information Center, North Carolina State University.