



SOUTHEAST GAP ANALYSIS PROJECT



Species Modeling Report

Eurasian Collared-Dove

Streptopelia decaocto

Taxa: Avian

Order: Columbiformes

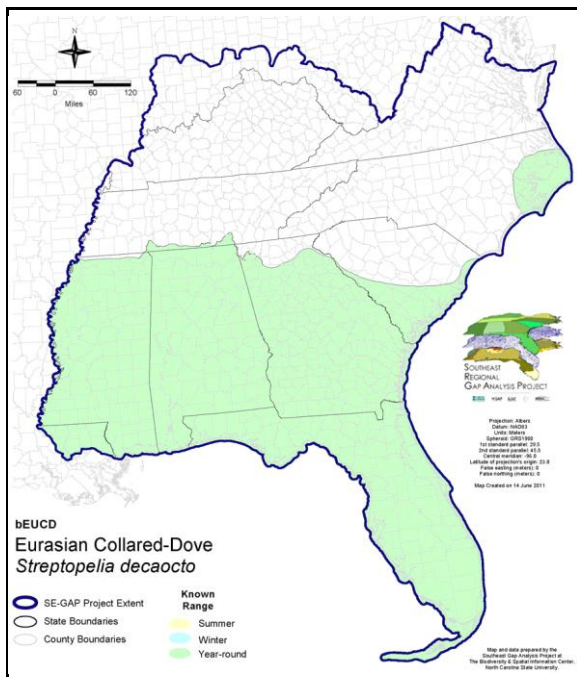
Family: Columbidae

SE-GAP Spp Code: **bEUCD**

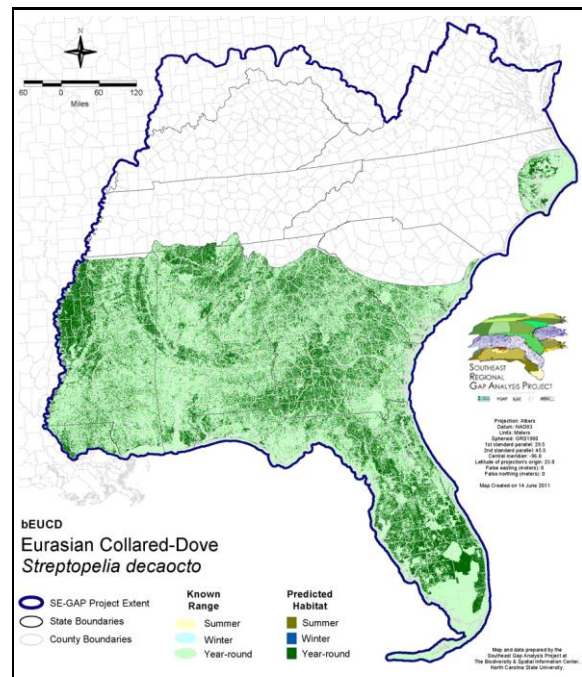
ITIS Species Code: 177139

NatureServe Element Code: ABNPB02030

KNOWN RANGE:



PREDICTED HABITAT:



Range Map Link: http://www.basic.ncsu.edu/segap/datazip/maps/SE_Range_bEUCD.pdf

Predicted Habitat Map Link: http://www.basic.ncsu.edu/segap/datazip/maps/SE_Dist_bEUCD.pdf

GAP Online Tool Link: <http://www.gapservice.ncsu.edu/segap/segap/index2.php?species=bEUCD>

Data Download: http://www.basic.ncsu.edu/segap/datazip/region/vert/bEUCD_se00.zip

PROTECTION STATUS:

Reported on March 14, 2011

Federal Status: ---

State Status: AL (GB), NY (U), UT (None), BC (7 (2005)), QC (Non suivie)

NS Global Rank: G5

NS State Rank: AL (SNA), AZ (SNA), FL (SNA), GA (SNA), LA (SNA), MN (SNA), MS (SNA), MT (SNA), NC (SNA), NM (SNA), NY (SNA), SC (SNA), UT (SNA), WA (SNA), WY (SNA), AB (SNA), BC (SNA), ON (SNA), QC (SNA), SK (SNA), SK (SNA), YT (SNA)

SUMMARY OF PREDICTED HABITAT BY MANAGMENT AND GAP PROTECTION STATUS:

	US FWS		US Forest Service		Tenn. Valley Author.		US DOD/ACOE	
	ha	%	ha	%	ha	%	ha	%
Status 1	6,760.4	< 1	70.1	< 1	0.0	0	0.0	0
Status 2	33,517.5	< 1	4,044.9	< 1	0.0	0	145.3	< 1
Status 3	80.6	< 1	70,769.3	< 1	4,441.1	< 1	97,987.6	< 1
Status 4	8.8	< 1	0.0	0	0.0	0	0.0	0
Total	40,367.3	< 1	74,884.3	< 1	4,441.1	< 1	98,132.9	< 1
	US Dept. of Energy		US Nat. Park Service		NOAA		Other Federal Lands	
	ha	%	ha	%	ha	%	ha	%
Status 1	0.0	0	1,056.2	< 1	7.7	< 1	1,331.2	< 1
Status 2	0.0	0	3,270.1	< 1	3,264.3	< 1	23.7	< 1
Status 3	2,481.5	< 1	9,365.9	< 1	0.0	0	1,866.3	< 1
Status 4	0.0	0	0.0	0	0.0	0	0.0	0
Total	2,481.5	< 1	13,692.2	< 1	3,272.0	< 1	3,221.2	< 1
	Native Am. Reserv.		State Park/Hist. Park		State WMA/Gameland		State Forest	
	ha	%	ha	%	ha	%	ha	%
Status 1	0.0	0	67.8	< 1	9.6	< 1	0.0	0
Status 2	0.0	0	539.5	< 1	61,597.4	< 1	0.0	0
Status 3	1,708.4	< 1	160,943.4	< 1	13,428.5	< 1	45,813.4	< 1
Status 4	0.0	0	0.0	0	11,068.8	< 1	0.9	< 1
Total	1,708.4	< 1	161,550.6	< 1	86,104.4	< 1	45,814.3	< 1
	State Coastal Reserve		ST Nat.Area/Preserve		Other State Lands		Private Cons. Easemt.	
	ha	%	ha	%	ha	%	ha	%
Status 1	0.0	0	581.2	< 1	0.0	0	0.0	0
Status 2	1,442.5	< 1	2,555.7	< 1	0.0	0	988.7	< 1
Status 3	0.0	0	4,624.5	< 1	10,723.6	< 1	53,536.2	< 1
Status 4	0.0	0	0.0	0	905.5	< 1	< 0.1	< 1
Total	1,442.5	< 1	7,761.4	< 1	11,629.1	< 1	54,525.0	< 1
	Private Land - No Res.		Water		Overall Total			
	ha	%	ha	%	ha	%	ha	%
Status 1	0.0	0	0.0	0	9,884.2		< 1	
Status 2	0.0	0	0.0	0	111,389.4		< 1	
Status 3	277.9	< 1	0.0	0	478,048.2		3	
Status 4	19,016,863.7	96	15,481.6	< 1	19,055,389.5		97	
Total	19,017,141.7	96	15,481.6	< 1	19,654,711.3		100	

GAP Status 1: An area having permanent protection from conversion of natural land cover and a mandated management plan in operation to maintain a natural state within which disturbance events (of natural type, frequency, and intensity) are allowed to proceed without interference or are mimicked through management.

GAP Status 2: An area having permanent protection from conversion of natural land cover and a mandated management plan in operation to maintain a primarily natural state, but which may receive use or management practices that degrade the quality of existing natural communities.

GAP Status 3: An area having permanent protection from conversion of natural land cover for the majority of the area, but subject to extractive uses of either a broad, low-intensity type or localized intense type. It also confers protection to federally listed endangered and threatened species throughout the area.

GAP Status 4: Lack of irrevocable easement or mandate to prevent conversion of natural habitat types to anthropogenic habitat types. Allows for intensive use throughout the tract. Also includes those tracts for which the existence of such restrictions or sufficient information to establish a higher status is unknown.

PREDICTED HABITAT MODEL(S):

Year-round Model:

Habitat Description: Eurasian collared-doves were introduced to North America in the mid-1970's (Romagosa 2002). These doves are typically associated with human populations in habitats such as suburbs, small towns, and agricultural areas where suitable food grains are present (GA-GAP 2003). They can also be found in open hardwood woodland, scrubland, and riparian environments (NatureServe 2005). Eurasian collared doves build their nests in trees primarily in areas around human habitation (Romagosa 2002). They will utilize live oak (*Quercus virginiana*), eastern red cedar (*Juniperus virginiana*), and southern magnolia (*magnolia grandiflora*) for roosting and nesting (Romagosa 2002). In general this species avoids heavily forested areas, marshes, prairies, built-up urban areas, and intensively farmed lands (FL BBA species account @ <http://wildflorida.org/bba/CODO.htm>, Romagosa 2002, Coombs et al. 1981). Amy Silvano 26may05

Ecosystem Classifiers: Low and Med Urban Only, Antro and Ag as PMU's, Slope Forests (For Magnolia Components), maritime (live Oak), glades & Barrens (cedars) as AMU's also. Amysilvano 26may05

Plausible gradation among dove species exploitation of urban environments with Rock Pigeon in Highly Urban, Collared dove in Medium (rare but possibly using only the fringes of natural forests for nesting and roosting), and mourning doves utilizing lower intensity urban environments to natural forested areas (pers. com R.E. Mirarchi). So included in Med & low urban. Amy Silvano 26may05

Selected Map Units:

Functional Group	Map Unit Name
Anthropogenic	Deciduous Plantations
Anthropogenic	Developed Open Space
Anthropogenic	Low Intensity Developed
Anthropogenic	Medium Intensity Developed
Anthropogenic	Pasture/Hay
Anthropogenic	Row Crop
Anthropogenic	Successional Grassland/Herbaceous
Anthropogenic	Successional Grassland/Herbaceous (Other)
Anthropogenic	Successional Grassland/Herbaceous (Utility Swath)

CITATIONS: Coombs, C.F.B., A.J. Isaacson, R.K. Murton, R.J.P. Thearle, and N.J. Westwood. 1981. Collared doves (*Streptopelia decaocto*) in urban habitats. *Journal of Applied Ecology*. 18: 14-62

Hengeveld, R. 1993. What to do about the North American invasion by the Collared-Dove. *Journal of Field Ornithology*. 64: 477-489

Romagosa, C.M. 2002. Eurasian Collared-Dove (*Streptopelia decaocto*). In *The Birds of North America*, No. 630 (A. Poole and F. Gill, eds.). The Birds of North America, Inc., Philadelphia, PA.

For more information:: SE-GAP Analysis Project / BaSIC
127 David Clark Labs
Dept. of Biology, NCSU
Raleigh, NC 27695-7617
(919) 513-2853
www.basic.ncsu.edu/segap

Compiled: 15 September 2011

This data was compiled and/or developed by the Southeast GAP Analysis Project at The Biodiversity and Spatial Information Center, North Carolina State University.