



SOUTHEAST GAP ANALYSIS PROJECT



Species Modeling Report

Great Blue Heron

Ardea herodias

Taxa: Avian

Order: Ciconiiformes

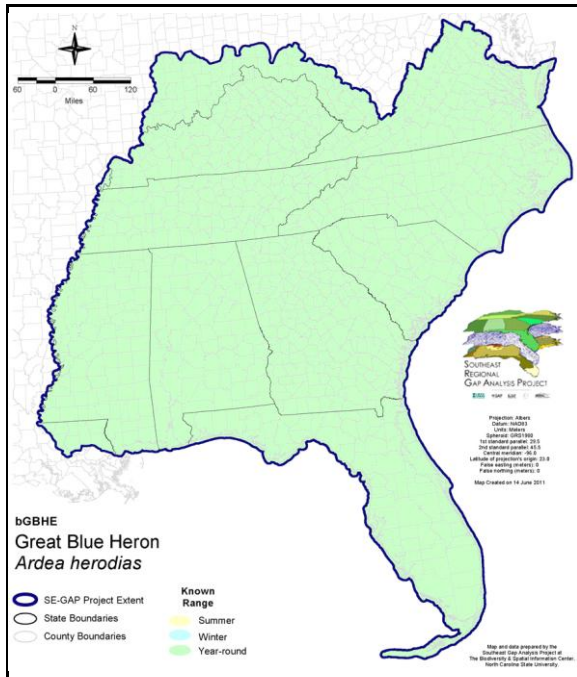
Family: Ardeidae

SE-GAP Spp Code: **bGBHE**

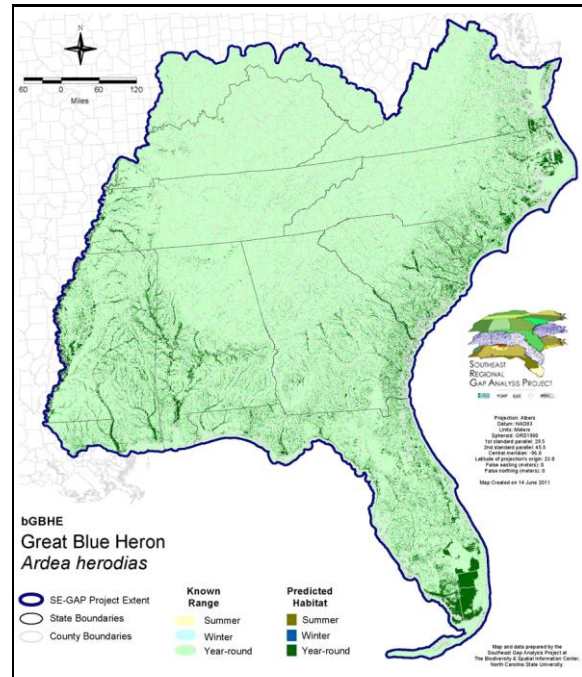
ITIS Species Code: 174773

NatureServe Element Code: ABNGA04010

KNOWN RANGE:



PREDICTED HABITAT:



Range Map Link: http://www.basic.ncsu.edu/segap/datazip/maps/SE_Range_bGBHE.pdf

Predicted Habitat Map Link: http://www.basic.ncsu.edu/segap/datazip/maps/SE_Dist_bGBHE.pdf

GAP Online Tool Link: <http://www.gapservice.ncsu.edu/segap/segap/index2.php?species=bGBHE>

Data Download: http://www.basic.ncsu.edu/segap/datazip/region/vert/bGBHE_se00.zip

PROTECTION STATUS:

Reported on March 14, 2011

Federal Status: ---

State Status: AR (M), CA (None), ID (P), KY (N), ME (SC), NJ (SC/S), NV (YES), NY (PB), RI (Concern), UT (None), WA (M), WI (SC/M), WI (SC/M), BC (4 (2005)), QC (Non suivie)

NS Global Rank: G5

NS State Rank: AK (S3), AL (S5), AR (S3B,S4N), AZ (S5), CA (S4), CO (S3B), CO (S3B), CT (S3B), CT (S3B), DC (S4N), DE (S2B), FL (SNR), GA (S4), IA (S3B), ID (S5B,S5N), IL (S4), IN (S4B), IN (S4B), KS (S4B,S4N), KY (S3B,S4N), LA (S5B,S5N), MA (S4B,S5N), MD (S4B,S3S4N), ME (S4B), MI (S5), MN (SNRB), MN (SNRB), MO (S5), MS (S5B), MS (S5B), MT (S3S4), NC (S4B,S5N), ND (SNRB), NE (S4), NH (S4B), NH (S4B), NJ (S3B,S4N), NM (S4B,S5N), NV (S5), NY (S5), OH (S4), OK (S5), OR (S4), PA (S3S4B,S4N), RI (S2B), SC (SNRB,SNRN), SD (S4B), SD (S4B), TN (S4), TX (S5B), UT (S4S5), VA (S3B,S5N), VT (S2S3B,S5N), WA (S4S5B,S5N), WI (S4B), WI (S4B), WV (S3B,S4N), WY (S4B), WY (S4B), AB (S3), BC (S3B), LB (SNA), MB (S4S5B), MB (S4S5B), NB (S4B), NF (S2?B), NS (S5B), NT (SNRB), ON (S4), PE (S4B), QC (S5B), SK (S3B), YT (SNA)

SUMMARY OF PREDICTED HABITAT BY MANAGMENT AND GAP PROTECTION STATUS:

	US FWS		US Forest Service		Tenn. Valley Author.		US DOD/ACOE	
	ha	%	ha	%	ha	%	ha	%
Status 1	132,611.9	1	5,872.6	< 1	0.0	0	0.0	0
Status 2	189,494.9	2	20,502.8	< 1	0.0	0	1,742.9	< 1
Status 3	1,918.6	< 1	236,493.5	2	6,731.4	< 1	126,220.1	1
Status 4	22.5	< 1	0.0	0	0.0	0	17.7	< 1
Total	324,047.9	3	262,868.9	2	6,731.4	< 1	127,980.6	1
	US Dept. of Energy		US Nat. Park Service		NOAA		Other Federal Lands	
	ha	%	ha	%	ha	%	ha	%
Status 1	0.0	0	364,886.3	3	956.7	< 1	6,817.5	< 1
Status 2	0.0	0	25,119.7	< 1	39,785.5	< 1	30.6	< 1
Status 3	16,906.1	< 1	157,822.2	1	0.0	0	1,148.0	< 1
Status 4	0.0	0	1.0	< 1	0.0	0	0.0	0
Total	16,906.1	< 1	547,830.1	5	40,742.2	< 1	7,996.1	< 1
	Native Am. Reserv.		State Park/Hist. Park		State WMA/Gameland		State Forest	
	ha	%	ha	%	ha	%	ha	%
Status 1	0.0	0	163.4	< 1	1.4	< 1	0.0	0
Status 2	0.0	0	1,099.2	< 1	632,021.7	5	23.8	< 1
Status 3	2,002.1	< 1	340,052.3	3	107,724.6	< 1	85,227.9	< 1
Status 4	0.0	0	0.0	0	9,801.5	< 1	5.4	< 1
Total	2,002.1	< 1	341,314.8	3	749,549.2	6	85,257.1	< 1
	State Coastal Reserve		ST Nat.Area/Preserve		Other State Lands		Private Cons. Easemt.	
	ha	%	ha	%	ha	%	ha	%
Status 1	0.0	0	2,300.6	< 1	0.0	0	0.0	0
Status 2	35,526.8	< 1	58,916.8	< 1	2.5	< 1	1,060.7	< 1
Status 3	0.0	0	8,893.2	< 1	5,806.4	< 1	48,977.7	< 1
Status 4	0.0	0	0.0	0	842.8	< 1	0.0	0
Total	35,526.8	< 1	70,110.5	< 1	6,651.7	< 1	50,038.5	< 1
	Private Land - No Res.		Water		Overall Total			
	ha	%	ha	%	ha	%	ha	%
Status 1	0.0	< 1	0.0	0	513,610.5 4			
Status 2	0.8	< 1	0.0	7	1,005,328.7 8			
Status 3	508.6	< 1	< 0.1	< 1	1,146,432.8 12			
Status 4	8,853,853.8	75	69,059.8	< 1	8,943,384.2 76			
Total	8,854,363.4	75	69,060.0	< 1	11,608,756.2 100			

GAP Status 1: An area having permanent protection from conversion of natural land cover and a mandated management plan in operation to maintain a natural state within which disturbance events (of natural type, frequency, and intensity) are allowed to proceed without interference or are mimicked through management.

GAP Status 2: An area having permanent protection from conversion of natural land cover and a mandated management plan in operation to maintain a primarily natural state, but which may receive use or management practices that degrade the quality of existing natural communities.

GAP Status 3: An area having permanent protection from conversion of natural land cover for the majority of the area, but subject to extractive uses of either a broad, low-intensity type or localized intense type. It also confers protection to federally listed endangered and threatened species throughout the area.

GAP Status 4: Lack of irrevocable easement or mandate to prevent conversion of natural habitat types to anthropogenic habitat types. Allows for intensive use throughout the tract. Also includes those tracts for which the existence of such restrictions or sufficient information to establish a higher status is unknown.

PREDICTED HABITAT MODEL(S):

Year-round Model:

Habitat Description: A colonial nester in trees, shrubs, on the ground and occasionally artificial structures proximal to water. Breeds on islands and wooded swamps within freshwater and marine environments . Forages mostly in slow moving or calm freshwater along lakes, rivers, bays, and lagoons; also ocean beaches, mangroves, fields, and meadows. The *Occidentalis* group (Great White Heron) restricted to coastal habitats of south FL (including the Keys) and almost exclusively found in shallow water marine habitats, particularly tidal grass flats (Butler 1992). M. Rubino, 11nov04.

Hydrography Mask:

Utilizes flowing water features with buffers of unlimited from and 30m into selected water features.

Utilizes open water features with buffers of unlimited from and 30m into selected water features.

Utilizes wet vegetation features with buffer of unlimited into selected vegetation features.

Selected Map Units:

Functional Group	Map Unit Name
Brackish Tidal Marsh & Wetland	Atlantic Coastal Plain Central Salt and Brackish Tidal Marsh
Brackish Tidal Marsh & Wetland	Atlantic Coastal Plain Embayed Region Tidal Salt and Brackish Marsh
Brackish Tidal Marsh & Wetland	Atlantic Coastal Plain Indian River Lagoon Tidal Marsh
Brackish Tidal Marsh & Wetland	Atlantic Coastal Plain Northern Sea-Level Fen
Brackish Tidal Marsh & Wetland	Atlantic Coastal Plain Northern Tidal Salt Marsh
Brackish Tidal Marsh & Wetland	Atlantic Coastal Plain Northern Tidal Wooded Swamp
Brackish Tidal Marsh & Wetland	Atlantic Coastal Plain Southern Tidal Wooded Swamp
Brackish Tidal Marsh & Wetland	East Gulf Coastal Plain Tidal Wooded Swamp
Brackish Tidal Marsh & Wetland	Florida Big Bend Salt-Brackish Tidal Marsh
Brackish Tidal Marsh & Wetland	Mississippi Sound Salt and Brackish Tidal Marsh
Brackish Tidal Marsh & Wetland	South Florida Everglades Sawgrass Marsh
Brackish Tidal Marsh & Wetland	South Florida Mangrove Swamp
Brackish Tidal Marsh & Wetland	Southwest Florida Perched Barriers Salt Swamp and Lagoon - Mangrove Modifier
Brackish Tidal Marsh & Wetland	Southwest Florida Perched Barriers Salt Swamp and Lagoon - Marsh Modifier
Coastal Dune & Freshwater Wetland	Atlantic and Gulf Coastal Plain Interdunal Wetland
Freshwater Tidal Marsh & Wetland	Atlantic Coastal Plain Central Fresh-Oligohaline Tidal Marsh
Freshwater Tidal Marsh & Wetland	Atlantic Coastal Plain Embayed Region Tidal Freshwater Marsh
Freshwater Tidal Marsh & Wetland	Atlantic Coastal Plain Northern Fresh and Oligohaline Tidal Marsh
Freshwater Tidal Marsh & Wetland	Florida Big Bend Fresh-Oligohaline Tidal Marsh
Water	Open Water (Aquaculture)
Water	Open Water (Brackish/Salt)
Water	Open Water (Fresh)
Wetlands	Atlantic Coastal Plain Blackwater Stream Floodplain Forest - Forest Modifier
Wetlands	Atlantic Coastal Plain Blackwater Stream Floodplain Forest - Herbaceous Modifier
Wetlands	Atlantic Coastal Plain Brownwater Stream Floodplain Forest
Wetlands	Atlantic Coastal Plain Clay-Based Carolina Bay Forested Wetland
Wetlands	Atlantic Coastal Plain Clay-Based Carolina Bay Herbaceous Wetland
Wetlands	Atlantic Coastal Plain Depression Pondshore
Wetlands	Atlantic Coastal Plain Large Natural Lakeshore
Wetlands	Atlantic Coastal Plain Nonriverine Swamp and Wet Hardwood Forest - Taxodium/Nyssa Modifier
Wetlands	Atlantic Coastal Plain Nonriverine Swamp and Wet Hardwood Forest - Oak Dominated Modifier
Wetlands	Atlantic Coastal Plain Northern Basin Peat Swamp
Wetlands	Atlantic Coastal Plain Northern Basin Swamp and Wet Hardwood Forest
Wetlands	Atlantic Coastal Plain Northern Pondshore
Wetlands	Atlantic Coastal Plain Peatland Pocosin
Wetlands	Atlantic Coastal Plain Sandhill Seep
Wetlands	Atlantic Coastal Plain Small Blackwater River Floodplain Forest
Wetlands	Atlantic Coastal Plain Small Brownwater River Floodplain Forest
Wetlands	Atlantic Coastal Plain Streamhead Seepage Swamp, Pocosin, and Baygall

Wetlands	Atlantic Coastal Plain Xeric River Dune
Wetlands	Central Appalachian Floodplain - Forest Modifier
Wetlands	Central Appalachian Floodplain - Herbaceous Modifier
Wetlands	Central Appalachian Riparian - Forest Modifier
Wetlands	Central Appalachian Riparian - Herbaceous Modifier
Wetlands	Central Florida Herbaceous Pondshore
Wetlands	Central Florida Herbaceous Seep
Wetlands	Central Interior Highlands and Appalachian Sinkhole and Depression Pond
Wetlands	Cumberland Riverscour
Wetlands	East Gulf Coastal Plain Interior Shrub Bog
Wetlands	East Gulf Coastal Plain Large River Floodplain Forest - Forest Modifier
Wetlands	East Gulf Coastal Plain Large River Floodplain Forest - Herbaceous Modifier
Wetlands	East Gulf Coastal Plain Northern Depression Pondshore
Wetlands	East Gulf Coastal Plain Northern Seepage Swamp
Wetlands	East Gulf Coastal Plain Small Stream and River Floodplain Forest
Wetlands	East Gulf Coastal Plain Southern Depression Pondshore
Wetlands	Floridian Highlands Freshwater Marsh
Wetlands	Lower Mississippi River Bottomland and Floodplain Forest
Wetlands	Lower Mississippi River Bottomland Depressions - Forest Modifier
Wetlands	Lower Mississippi River Bottomland Depressions - Herbaceous Modifier
Wetlands	Mississippi River Low Floodplain (Bottomland) Forest
Wetlands	Mississippi River Riparian Forest
Wetlands	North-Central Appalachian Acidic Swamp
Wetlands	North-Central Appalachian Seepage Fen
Wetlands	North-Central Interior and Appalachian Rich Swamp
Wetlands	South Florida Bayhead Swamp
Wetlands	South Florida Freshwater Slough and Gator Hole
Wetlands	South Florida Pond-Apple/Popash Slough
Wetlands	South Florida Willow Head
Wetlands	South-Central Interior Large Floodplain - Forest Modifier
Wetlands	South-Central Interior Large Floodplain - Herbaceous Modifier
Wetlands	South-Central Interior Small Stream and Riparian
Wetlands	Southern and Central Appalachian Bog and Fen
Wetlands	Southern Appalachian Seepage Wetland
Wetlands	Southern Coastal Plain Blackwater River Floodplain Forest
Wetlands	Southern Coastal Plain Herbaceous Seepage Bog
Wetlands	Southern Coastal Plain Nonriverine Basin Swamp
Wetlands	Southern Coastal Plain Seepage Swamp and Baygall
Wetlands	Southern Coastal Plain Spring-run Stream Aquatic Vegetation
Wetlands	Southern Piedmont Large Floodplain Forest - Forest Modifier
Wetlands	Southern Piedmont Large Floodplain Forest - Herbaceous Modifier
Wetlands	Southern Piedmont Seepage Wetland
Wetlands	Southern Piedmont Small Floodplain and Riparian Forest
Wetlands	Southern Piedmont/Ridge and Valley Upland Depression Swamp
Wetlands	Unconsolidated Shore (Lake/River/Pond)
Wetlands	Western Highland Rim Seepage Fen

CITATIONS: Allen, H. 1991. The great blue heron. NorthWord Press, Inc. 175 pp.

American Ornithologists' Union (AOU), Committee on Classification and Nomenclature. 1983. Check-list of North American Birds. Sixth Edition. American Ornithologists' Union, Allen Press, Inc., Lawrence, Kansas.

Butler, R.W. 1992. Great blue heron (*Ardea herodias*). In A. Poole and F. Gill, eds., *The Birds of North America*, No. 25. The Academy of Natural Sciences, Philadelphia and The American Ornithologists' Union, Washington, DC.

DeMauro, M. M. 1993. Colonial nesting bird responses to visitor use at Lake Renwick heron rookery, Illinois. *Natural Areas Journal* 13:4-9.

Ehrlich, P.R., D.S. Dobkin, and D. Wheye. 1988. *The birder's handbook: a field guide to the natural history of North American birds*. Simon and Shuster, Inc., New York. xxx + 785 pp.

- Ehrlich, P.R., D.S. Dobkin, and D. Wheye. 1992. *Birds in jeopardy: the imperiled and extinct birds of the United States and Canada, including Hawaii and Puerto Rico*. Stanford University Press, Stanford, California. 259 pp.
- Fleury, B. E., and T. W. Sherry. 1995. Long-term population trends of colonial wading birds in the southern United States: the impact of crayfish aquaculture on Louisiana populations. *Auk* 112:613-632.
- Fussell, J. III and M. Lyons. 1990. *Birds of the Outer Banks* [pamphlet]. Eastern National Parks and Monument Association Coastal Wildlife Refuge Society.
- Fussell, J.O. III. 1994. *A birder's guide to coastal North Carolina*. Chapel Hill and London: The University of North Carolina Press.
- Gerrard, J. M., et al. 1993. Water-bird population changes in 1976-1990 on Besnard Lake, Saskatchewan: increases in loons, gulls, and pelicans. *Can. J. Zool.* 71:1681-1686.
- Gibbs, J. P. 1991. Spatial relationships between nesting colonies and foraging areas of great blue herons. *Auk* 108:764-770.
- Hilty, S.L., and W.L. Brown. 1986. *A guide to the birds of Colombia*. Princeton University Press, Princeton, New Jersey. 836 pp.
- Kaufman K. 1996. *Lives of North American Birds*. Boston, New York: Houghton Mifflin Company.
- McNeil, R., R. Benoit, and J.-L. Desgranges. 1993. Daytime and nighttime activity at a breeding colony of great blue herons in a nontidal environment. *Can. J. Zool.* 71:1075-1078.
- Nicholson CP. 1997. *Atlas of the breeding birds of Tennessee*. Knoxville: University of Tennessee Press.
- Palmer, R. S. (editor). 1962. *Handbook of North American birds*. Vol. 1. Loons through flamingos. Yale University Press, New Haven. 567 pp.
- Payne, R. B., and C. J. Risley. 1976. Systematics and evolutionary relationships among the herons (Ardeidae). *Univ. Michigan Mus. Zool., Misc. Publ. No. 150*. 115 pp.
- Potter, E. F., J. F. Parnell, and R. P. Teulings. 1980. *Birds of the Carolinas*. Univ. North Carolina Press, Chapel Hill. 408 pp.
- Powell, G. V. N. 1987. Habitat use by wading birds in a subtropical estuary: implications of hydrography. *Auk* 104:740-749.
- Pratt, H.D., P.L. Bruner, and D.G. Berrett. 1987. *A field guide to the birds of Hawaii and the tropical Pacific*. Princeton University Press, Princeton, New Jersey. 409 pp. + 45 plates.
- Raffaele, H.A. 1983. *A guide to the birds of Puerto Rico and the Virgin Islands*. Fondo Educativo Interamericano, San Juan, Puerto Rico. 255 pp.
- Ridgely, R. S., and J. A. Gwynne, Jr. 1989. *A guide to the birds of Panama with Costa Rica, Nicaragua, and Honduras*. Second edition. Princeton Univ. Press, Princeton, New Jersey. 534 pp.
- Root, T. 1988. *Atlas of wintering North American birds: An analysis of Christmas Bird Count data*. University of Chicago Press. 336 pp.
- Simpson MB Jr. 1992. *Birds of the Blue Ridge Mountains*. Chapel Hill and London: University of North Carolina Press.
- Spendlow, J.A., and S.R. Patton. 1988. *National atlas of coastal waterbird colonies in the contiguous United States: 1976-1982*. U.S. Fish and Wildlife Service, Biological Report 88(5). x + 326 pp.
- Stiles, F.G., and A.F. Skutch. 1989. *A guide to the birds of Costa Rica*. Comstock Publ. Associates, Cornell University Press, Ithaca, New York. 511 pp.
- Terres, J.K. 1980. *The Audubon Society encyclopedia of North American birds*. Alfred A. Knopf, New York.
- Vos, D. K. 1984. *Response of breeding great blue herons to human disturbance in northcentral Colorado*. M.S. thesis, Colorado State Univ., Fort Collins.