



SOUTHEAST GAP ANALYSIS PROJECT



Species Modeling Report

Hairy Woodpecker

Picoides villosus

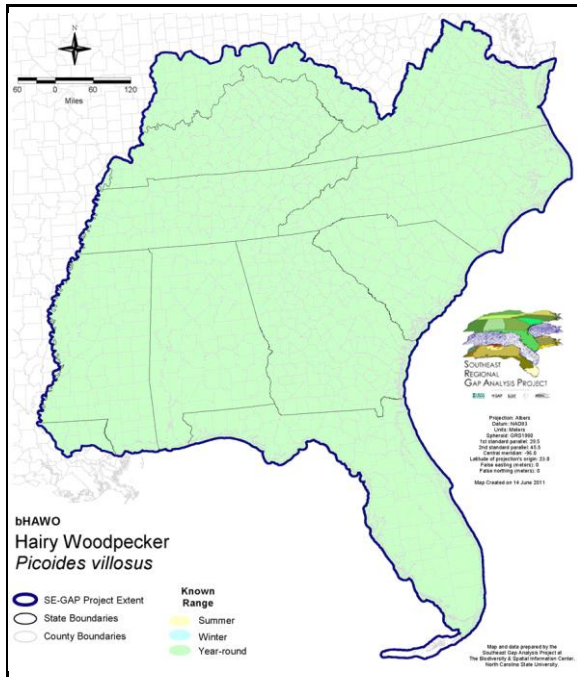
Taxa: Avian
 Order: Piciformes
 Family: Picidae

SE-GAP Spp Code: **bHAWO**

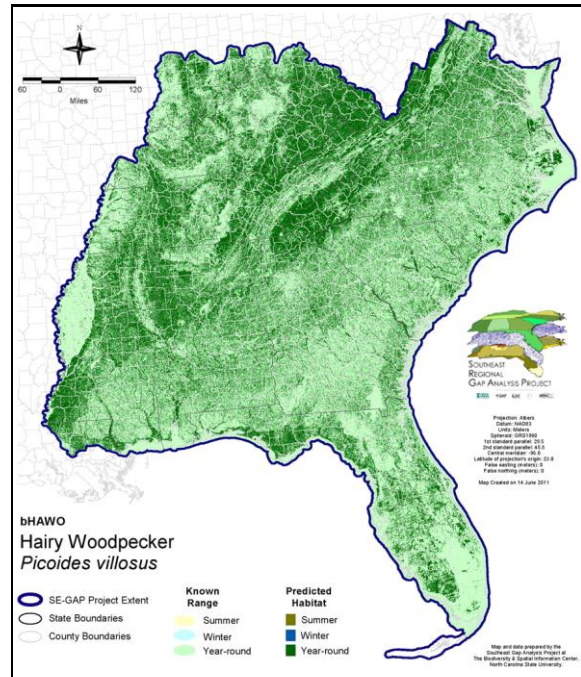
ITIS Species Code: 178262

NatureServe Element Code: ABNYF07040

KNOWN RANGE:



PREDICTED HABITAT:



Range Map Link: http://www.basic.ncsu.edu/segap/datazip/maps/SE_Range_bHAWO.pdf

Predicted Habitat Map Link: http://www.basic.ncsu.edu/segap/datazip/maps/SE_Dist_bHAWO.pdf

GAP Online Tool Link: <http://www.gapservice.ncsu.edu/segap/segap/index2.php?species=bHAWO>

Data Download: http://www.basic.ncsu.edu/segap/datazip/region/vert/bHAWO_se00.zip

PROTECTION STATUS:

Reported on March 14, 2011

Federal Status: ---

State Status: AR (W), ID (P), KY (N), NJ (S/S), NV (YES), NY (PB), RI (Not Listed), UT (None), BC (4 (2005)), QC (Non suivie)

NS Global Rank: G5

NS State Rank: AK (S5), AL (S5), AR (S4S5), AZ (S5), CA (S5), CO (S5), CT (S5), DC (S3), DE (S3), FL (S3), GA (S4), IA (S5B), ID (S5), IL (S4S5), IN (S4), KS (S4), KY (S5), LA (S4), MA (S5), MD (S5), ME (S5), MI (S5), MN (SNR), MO (SNR), MS (S5), MT (S5), NC (S4), ND (SNR), NE (S4), NH (S5), NJ (S4B,S4N), NM (S5B,S5N), NV (S4), NY (S5), OH (S5), OK (S5), OR (S4), PA (S5), RI (S4B,S4N), SC (S4), SD (S5), TN (S4), TX (S4B), UT (S4S5), VA (S5), VT (S5B,S5N), WA (S5), WI (S5B), WI (S5B), WV (S5B,S5N), WY (S5B), WY (S5B), AB (S5), BC (S5B), LB (S3), MB (S5), MB (S5), NB (S5), NF (S4), NS (S5), NT (SNR), ON (S5), PE (S5), QC (S5B), SK (S5B,S5N), YT (S5)

SUMMARY OF PREDICTED HABITAT BY MANAGMENT AND GAP PROTECTION STATUS:

	US FWS		US Forest Service		Tenn. Valley Author.		US DOD/ACOE	
	ha	%	ha	%	ha	%	ha	%
Status 1	108,101.3	< 1	38,382.1	< 1	0.0	0	0.0	0
Status 2	173,677.1	< 1	405,444.4	< 1	0.0	0	4,710.3	< 1
Status 3	3,551.5	< 1	2,347,861.7	5	52,659.2	< 1	390,424.6	< 1
Status 4	67.2	< 1	< 0.1	< 1	0.0	0	10.2	< 1
Total	285,397.2	< 1	2,791,688.3	6	52,659.2	< 1	395,145.1	< 1
	US Dept. of Energy		US Nat. Park Service		NOAA		Other Federal Lands	
	ha	%	ha	%	ha	%	ha	%
Status 1	0.0	0	321,086.3	< 1	15.2	< 1	9,657.5	< 1
Status 2	0.0	0	15,339.2	< 1	3,839.0	< 1	52.9	< 1
Status 3	43,248.1	< 1	268,873.0	< 1	0.0	0	3,718.4	< 1
Status 4	0.0	0	0.0	0	0.0	0	0.0	0
Total	43,248.1	< 1	605,298.4	1	3,854.3	< 1	13,428.9	< 1
	Native Am. Reserv.		State Park/Hist. Park		State WMA/Gameland		State Forest	
	ha	%	ha	%	ha	%	ha	%
Status 1	0.0	0	1,459.4	< 1	72.9	< 1	0.0	0
Status 2	0.0	0	19,518.6	< 1	676,738.4	1	1,410.8	< 1
Status 3	24,486.5	< 1	511,909.4	1	202,337.0	< 1	239,148.1	< 1
Status 4	0.0	0	< 0.1	< 1	84,150.5	< 1	14.1	< 1
Total	24,486.5	< 1	532,887.5	1	963,298.8	2	240,573.1	< 1
	State Coastal Reserve		ST Nat.Area/Preserve		Other State Lands		Private Cons. Easemt.	
	ha	%	ha	%	ha	%	ha	%
Status 1	0.0	0	14,553.1	< 1	0.0	0	0.0	0
Status 2	12,131.6	< 1	85,771.0	< 1	5.0	< 1	2,706.8	< 1
Status 3	0.0	0	20,361.9	< 1	13,553.5	< 1	82,521.4	< 1
Status 4	0.0	0	2.1	< 1	2,402.3	< 1	0.0	0
Total	12,131.6	< 1	120,688.0	< 1	15,960.7	< 1	85,228.2	< 1
	Private Land - No Res.		Water		Overall Total			
	ha	%	ha	%	ha	%		
Status 1	0.0	0	0.0	0	493,327.9	< 1		
Status 2	0.0	0	0.0	0	1,401,345.3	3		
Status 3	520.0	< 1	< 0.1	< 1	4,205,174.2	13		
Status 4	40,833,361.8	83	30,333.5	< 1	41,034,425.0	83		
Total	40,833,881.8	83	30,333.6	< 1	47,134,272.4	100		

GAP Status 1: An area having permanent protection from conversion of natural land cover and a mandated management plan in operation to maintain a natural state within which disturbance events (of natural type, frequency, and intensity) are allowed to proceed without interference or are mimicked through management.

GAP Status 2: An area having permanent protection from conversion of natural land cover and a mandated management plan in operation to maintain a primarily natural state, but which may receive use or management practices that degrade the quality of existing natural communities.

GAP Status 3: An area having permanent protection from conversion of natural land cover for the majority of the area, but subject to extractive uses of either a broad, low-intensity type or localized intense type. It also confers protection to federally listed endangered and threatened species throughout the area.

GAP Status 4: Lack of irrevocable easement or mandate to prevent conversion of natural habitat types to anthropogenic habitat types. Allows for intensive use throughout the tract. Also includes those tracts for which the existence of such restrictions or sufficient information to establish a higher status is unknown.

PREDICTED HABITAT MODEL(S):

Year-round Model:

Habitat Description: Hairy woodpeckers are common in more mature and mid-age forests and forest interior of all types (upland and wetland), including managed pine; appears to prefer dense canopy forests (Layne et al. 1977, Ehrlich et al. 1988, Bushmann and Therres 1988). Also found in open areas with disperse trees. In addition, they are characteristic inhabitants of recently burned forests (Stevenson and Anderson 1994). They are uncommon near human residential areas (less so than the downy woodpecker) (Hammel 1992, Kaufman 1996). Not common in North Carolina (Potter et al. 1980). Documented to be absent from the barrier islands (Fussel and Lyons 1990), Florida Keys and south Florida (Robertson and Kushlan 1984). Forage on bark and green vegetation, sometimes by peeling bark (Kaufman 1996).

Mature forests and burned forests have more trees with heart rot and cavities for nesting. Nest cavity excavated 4 to 60 feet above ground in dead wood (Ehrlich et al. 1988, Nicholson 1997). Can nest in bird boxes and utility poles.

Appears to be minimally impacted by forest fragmentation though decline with forest patch size likely due to a decline in nest cavities (Bushman and Therres 1988). Need wooded patches of at least 2 ha., but 12 ha thought to be required to support a viable breeding population. Minimum riparian forest width to support breeding was found to be 40m in Iowa (Sousa 1987).

Quoted directly from existing state habitat notes - K. Cook, 9Feb05

Additional information:

Hairy Woodpeckers flew on average 6.1 m +/- 1.6 m from forest edges (Belisle and Derochers 2002) in Quebec. Clifford and Conner (1997) found hairy woodpeckers to be virtually absent from longleaf pine in Eastern TX. (This was the only citation I could find that addressed hairy woodpecker use of longleaf). Hairy woodpeckers use tropical hardwood hammocks and pine rocklands in southern Florida, but due to declines in these habitat types from agriculture they are rare in the everglades region of southern Florida. Uses open woodlands, highly wooded towns and parks, however they are 'scarce' in these habitats (Jackson et al. 2002). Jackson et al. (2002) state that they tend to avoid pine plantations. K. Cook, 9Feb05

Contiguous Patch Minimum Size (hectares): 2

Selected Map Units:

Functional Group	Map Unit Name
Anthropogenic	Deciduous Plantations
Anthropogenic	Successional Shrub/Scrub (Clear Cut)
Anthropogenic	Successional Shrub/Scrub (Other)
Anthropogenic	Successional Shrub/Scrub (Utility Swath)
Forest/Woodland	Alabama Ketona Glade and Woodland
Forest/Woodland	Allegheny-Cumberland Dry Oak Forest and Woodland
Forest/Woodland	Allegheny-Cumberland Dry Oak Forest and Woodland - Hardwood Modifier
Forest/Woodland	Allegheny-Cumberland Dry Oak Forest and Woodland - Pine Modifier
Forest/Woodland	Appalachian Hemlock-Hardwood Forest
Forest/Woodland	Appalachian Serpentine Woodland
Forest/Woodland	Appalachian Shale Barrens
Forest/Woodland	Atlantic Coastal Plain Dry and Dry-Mesic Oak Forest
Forest/Woodland	Atlantic Coastal Plain Fall-Line Sandhills Longleaf Pine Woodland - Loblolly Modifier
Forest/Woodland	Atlantic Coastal Plain Fall-line Sandhills Longleaf Pine Woodland - Offsite Hardwood Modifier
Forest/Woodland	Atlantic Coastal Plain Mesic Hardwood and Mixed Forest
Forest/Woodland	Atlantic Coastal Plain Northern Mixed Oak-Heath Forest
Forest/Woodland	Central and Southern Appalachian Montane Oak Forest
Forest/Woodland	Central and Southern Appalachian Northern Hardwood Forest
Forest/Woodland	Central and Southern Appalachian Spruce-Fir Forest
Forest/Woodland	Central Appalachian Alkaline Glade and Woodland
Forest/Woodland	Central Appalachian Oak and Pine Forest

Forest/Woodland	Central Appalachian Pine-Oak Rocky Woodland
Forest/Woodland	Central Interior Highlands Calcareous Glade and Barrens
Forest/Woodland	Central Interior Highlands Dry Acidic Glade and Barrens
Forest/Woodland	Cumberland Sandstone Glade and Barrens
Forest/Woodland	East Gulf Coastal Plain Interior Shortleaf Pine-Oak Forest - Hardwood Modifier
Forest/Woodland	East Gulf Coastal Plain Interior Shortleaf Pine-Oak Forest - Mixed Modifier
Forest/Woodland	East Gulf Coastal Plain Interior Shortleaf Pine-Oak Forest - Pine Modifier
Forest/Woodland	East Gulf Coastal Plain Interior Upland Longleaf Pine Woodland - Offsite Hardwood Modifier
Forest/Woodland	East Gulf Coastal Plain Limestone Forest
Forest/Woodland	East Gulf Coastal Plain Northern Dry Upland Hardwood Forest
Forest/Woodland	East Gulf Coastal Plain Northern Loess Bluff Forest
Forest/Woodland	East Gulf Coastal Plain Northern Loess Plain Oak-Hickory Upland - Hardwood Modifier
Forest/Woodland	East Gulf Coastal Plain Northern Loess Plain Oak-Hickory Upland - Juniper Modifier
Forest/Woodland	East Gulf Coastal Plain Northern Mesic Hardwood Forest
Forest/Woodland	East Gulf Coastal Plain Southern Loess Bluff Forest
Forest/Woodland	East Gulf Coastal Plain Southern Mesic Slope Forest
Forest/Woodland	Florida Peninsula Inland Scrub
Forest/Woodland	Nashville Basin Limestone Glade
Forest/Woodland	Northeastern Interior Dry Oak Forest - Mixed Modifier
Forest/Woodland	Northeastern Interior Dry Oak Forest - Virginia/Pitch Pine Modifier
Forest/Woodland	Northeastern Interior Dry Oak Forest-Hardwood Modifier
Forest/Woodland	Northern Atlantic Coastal Plain Dry Hardwood Forest
Forest/Woodland	Ridge and Valley Calcareous Valley Bottom Glade and Woodland
Forest/Woodland	South Florida Pine Rockland
Forest/Woodland	South-Central Interior Mesophytic Forest
Forest/Woodland	Southern and Central Appalachian Cove Forest
Forest/Woodland	Southern and Central Appalachian Mafic Glade and Barrens
Forest/Woodland	Southern and Central Appalachian Oak Forest
Forest/Woodland	Southern and Central Appalachian Oak Forest - Xeric
Forest/Woodland	Southern Appalachian Low Mountain Pine Forest
Forest/Woodland	Southern Appalachian Montane Pine Forest and Woodland
Forest/Woodland	Southern Coastal Plain Dry Upland Hardwood Forest
Forest/Woodland	Southern Coastal Plain Oak Dome and Hammock
Forest/Woodland	Southern Interior Low Plateau Dry-Mesic Oak Forest
Forest/Woodland	Southern Interior Low Plateau Dry-Mesic Oak Forest - Evergreen Modifier
Forest/Woodland	Southern Piedmont Dry Oak-(Pine) Forest - Hardwood Modifier
Forest/Woodland	Southern Piedmont Dry Oak-(Pine) Forest - Loblolly Pine Modifier
Forest/Woodland	Southern Piedmont Dry Oak-(Pine) Forest - Mixed Modifier
Forest/Woodland	Southern Piedmont Dry Oak-Heath Forest - Hardwood Modifier
Forest/Woodland	Southern Piedmont Dry Oak-Heath Forest - Mixed Modifier
Forest/Woodland	Southern Piedmont Dry Oak-Heath Forest - Virginia/Pitch Pine Modifier
Forest/Woodland	Southern Piedmont Glade and Barrens
Forest/Woodland	Southern Piedmont Mafic Hardpan Woodland
Forest/Woodland	Southern Piedmont Mesic Forest
Forest/Woodland	Southern Piedmont Northern Triassic Basin Dry Forest
Forest/Woodland	Southern Ridge and Valley Dry Calcareous Forest
Forest/Woodland	Southern Ridge and Valley Dry Calcareous Forest - Hardwood Modifier
Forest/Woodland	Southern Ridge and Valley Dry Calcareous Forest - Pine Modifier
Wetlands	Atlantic Coastal Plain Blackwater Stream Floodplain Forest - Forest Modifier
Wetlands	Atlantic Coastal Plain Brownwater Stream Floodplain Forest
Wetlands	Atlantic Coastal Plain Clay-Based Carolina Bay Forested Wetland
Wetlands	Atlantic Coastal Plain Clay-Based Carolina Bay Herbaceous Wetland
Wetlands	Atlantic Coastal Plain Nonriverine Swamp and Wet Hardwood Forest - Taxodium/Nyssa Modifier
Wetlands	Atlantic Coastal Plain Nonriverine Swamp and Wet Hardwood Forest - Oak Dominated Modifier
Wetlands	Atlantic Coastal Plain Northern Basin Peat Swamp
Wetlands	Atlantic Coastal Plain Northern Basin Swamp and Wet Hardwood Forest

Wetlands	Atlantic Coastal Plain Northern Wet Longleaf Pine Savanna and Flatwoods
Wetlands	Atlantic Coastal Plain Peatland Pocosin
Wetlands	Atlantic Coastal Plain Sandhill Seep
Wetlands	Atlantic Coastal Plain Small Blackwater River Floodplain Forest
Wetlands	Atlantic Coastal Plain Small Brownwater River Floodplain Forest
Wetlands	Atlantic Coastal Plain Southern Wet Pine Savanna and Flatwoods
Wetlands	Atlantic Coastal Plain Streamhead Seepage Swamp, Pocosin, and Baygall
Wetlands	Atlantic Coastal Plain Xeric River Dune
Wetlands	Central Appalachian Floodplain - Forest Modifier
Wetlands	Central Appalachian Riparian - Forest Modifier
Wetlands	Central Florida Pine Flatwoods
Wetlands	East Gulf Coastal Plain Jackson Plain Dry Flatwoods - Open Understory Modifier
Wetlands	East Gulf Coastal Plain Jackson Plain Dry Flatwoods - Scrub/Shrub Understory Modifier
Wetlands	East Gulf Coastal Plain Large River Floodplain Forest - Forest Modifier
Wetlands	East Gulf Coastal Plain Near-Coast Pine Flatwoods - Offsite Hardwood Modifier
Wetlands	East Gulf Coastal Plain Near-Coast Pine Flatwoods - Open Understory Modifier
Wetlands	East Gulf Coastal Plain Near-Coast Pine Flatwoods - Scrub/Shrub Understory Modifier
Wetlands	East Gulf Coastal Plain Northern Seepage Swamp
Wetlands	East Gulf Coastal Plain Small Stream and River Floodplain Forest
Wetlands	East Gulf Coastal Plain Southern Loblolly-Hardwood Flatwoods
Wetlands	East Gulf Coastal Plain Treeless Savanna and Wet Prairie
Wetlands	Lower Mississippi River Bottomland Depressions - Forest Modifier
Wetlands	North-Central Appalachian Acidic Swamp
Wetlands	North-Central Interior and Appalachian Rich Swamp
Wetlands	South Florida Bayhead Swamp
Wetlands	South Florida Cypress Dome
Wetlands	South Florida Dwarf Cypress Savanna
Wetlands	South Florida Hardwood Hammock
Wetlands	South Florida Pine Flatwoods
Wetlands	South Florida Pond-Apple/Popash Slough
Wetlands	South-Central Interior Large Floodplain - Forest Modifier
Wetlands	South-Central Interior Small Stream and Riparian
Wetlands	South-Central Interior/Upper Coastal Plain Wet Flatwoods
Wetlands	Southern Appalachian Seepage Wetland
Wetlands	Southern Coastal Plain Blackwater River Floodplain Forest
Wetlands	Southern Coastal Plain Herbaceous Seepage Bog
Wetlands	Southern Coastal Plain Hydric Hammock
Wetlands	Southern Coastal Plain Nonriverine Basin Swamp
Wetlands	Southern Coastal Plain Nonriverine Cypress Dome
Wetlands	Southern Coastal Plain Seepage Swamp and Baygall
Wetlands	Southern Piedmont Large Floodplain Forest - Forest Modifier
Wetlands	Southern Piedmont Seepage Wetland
Wetlands	Southern Piedmont Small Floodplain and Riparian Forest
Wetlands	Southern Piedmont/Ridge and Valley Upland Depression Swamp
Wetlands	Western Highland Rim Seepage Fen

CITATIONS: American Ornithologists' Union (AOU), Committee on Classification and Nomenclature. 1983. Check-list of North American Birds. Sixth Edition. American Ornithologists' Union, Allen Press, Inc., Lawrence, Kansas.

Belisle, M., and A. Desrochers. 2002. Gap-crossing decisions by forest birds: an empirical basis for parameterizing spatially-explicit, individual-based models. *Landscape Ecology* 17:219-231.

Bent, A.C. 1939. Life histories of North American woodpeckers, U.S. Nat'l. Mus. Bull. 174. Washington, D.C.

Bushman, E.S., and G.D. Therres. 1988. Habitat management guidelines for forest interior breeding birds of coastal Maryland. Maryland Department of Natural Resources, Wildlife Tech. Publ. 88-1. 50 pp.

Clifford, E. S. a. R. N. C. 1997. Woodpecker abundance and habitat use in three forest types in eastern Texas. *Wilson Bulletin* 109:614-629.

- Ehrlich, P.R., D.S. Dobkin, and D. Wheye. 1988. *The birder's handbook: a field guide to the natural history of North American birds*. Simon and Shuster, Inc., New York. xxx + 785 pp.
- Ehrlich, P.R., D.S. Dobkin, and D. Wheye. 1992. *Birds in jeopardy: the imperiled and extinct birds of the United States and Canada, including Hawaii and Puerto Rico*. Stanford University Press, Stanford, California. 259 pp.
- Fussell, J. III and M. Lyons. 1990. *Birds of the Outer Banks* [pamphlet]. Eastern National Parks and Monument Association Coastal Wildlife Refuge Society.
- Hamel, P. B. 1992. *The land manager's guide to the birds of the south*. The Nature Conservancy, Chapel Hill, North Carolina. 367 pp + several appendices.
- Harrison, C. 1978. *A field guide to the nests, eggs and nestlings of North American birds*. Collins, Cleveland, Ohio.
- Harrison, H.H. 1979. *A field guide to western birds' nests*. Houghton Mifflin Company, Boston. 279 pp.
- Jackson, J. A., H. R. Ouellet, and B. J. S. Jackson. 2002. Hairy Woodpecker (*Picoides villosus*). in A. P. a. F. Gill, editor. *The Birds of North America*. The Birds of North America, Inc., Philadelphia, PA.
- Kaufman K. 1996. *Lives of North American Birds*. Boston, New York: Houghton Mifflin Company.
- Kilham, L. 1983. *Life history studies of woodpeckers of eastern North America*. Nuttall Ornithol. Club Pub. No. 20. vii + 240 pp.
- Layne, J.N.; Stallcup, J.A.; Woolfenden, G.E.; McCauley, M.N.; Worley, D.J. 1977. *Fish and Wildlife Inventory of the Seven-County Region Included in the Central Florida Phosphate Industry Area-Wide Environmental Impact Study*. Volumes I and II. Also available.
- Mitchell, W.A. 1988. *Songbird nest boxes*. Section 5.1.8, U.S. Army Corps of Engineers, Wildlife Resources Management Manual. Tech. Rep. EL-88-19. Waterways Experiment Station, Vicksburg, Mississippi. 48 pp.
- National Geographic Society (NGS). 1983. *Field guide to the birds of North America*. National Geographic Society, Washington, D.C.
- Nicholson CP. 1997. *Atlas of the breeding birds of Tennessee*. Knoxville: University of Tennessee Press.
- Potter, E. F., J. F. Parnell, and R. P. Teulings. 1980. *Birds of the Carolinas*. Univ. North Carolina Press, Chapel Hill. 408 pp.
- Robertson, W. B. Jr. and J. A. Kushlan. 1984. *The Southern Florida Avifauna. Environments of South Florida Present and Past II*. P. J. Gleason ed. Coral Gables, Florida: Miami Geological Society; pp. 219-257. 551 pages.
- Short, L.L. 1982. *Woodpeckers of the world*. Museum of Natural History [Greenville, Delaware], Monograph Series xviii + 676 pp.
- Sousa, P. J. 1987. *Habitat suitability index models: hairy woodpecker*. U. S. Fish Wildl. Serv. Biol. Rep. 82(10.146). 19 pp.
- Stevenson, H. M., and B. H. Anderson. 1994. *The birdlife of Florida*. University Press of Florida, Gainesville. 892 pp.
- Stiles, F.G., and A.F. Skutch. 1989. *A guide to the birds of Costa Rica*. Comstock Publ. Associates, Cornell University Press, Ithaca, New York. 511 pp.
- Terres, J.K. 1980. *The Audubon Society encyclopedia of North American birds*. Alfred A. Knopf, New York.

For more information:: SE-GAP Analysis Project / BaSIC
 127 David Clark Labs
 Dept. of Biology, NCSU
 Raleigh, NC 27695-7617
 (919) 513-2853
www.basic.ncsu.edu/segap

Compiled: 15 September 2011

This data was compiled and/or developed by the Southeast GAP Analysis Project at The Biodiversity and Spatial Information Center, North Carolina State University.