



SOUTHEAST GAP ANALYSIS PROJECT



Species Modeling Report

House Finch

Carpodacus mexicanus

Taxa: Avian

Order: Passeriformes

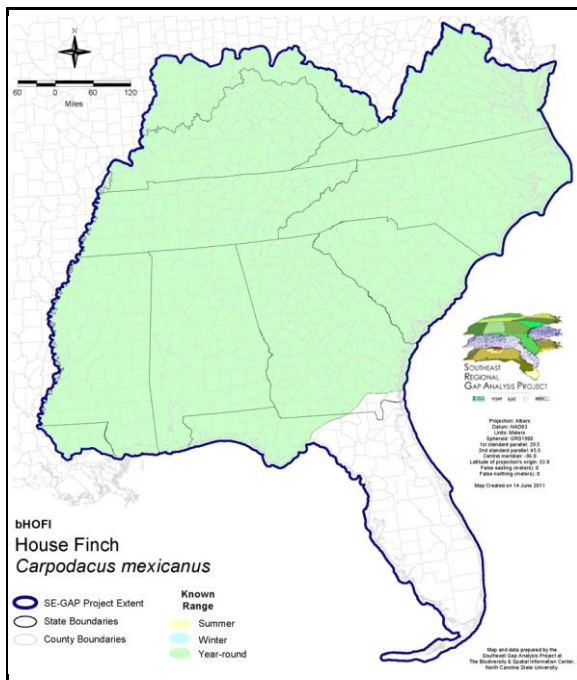
Family: Fringillidae

SE-GAP Spp Code: **bHOFI**

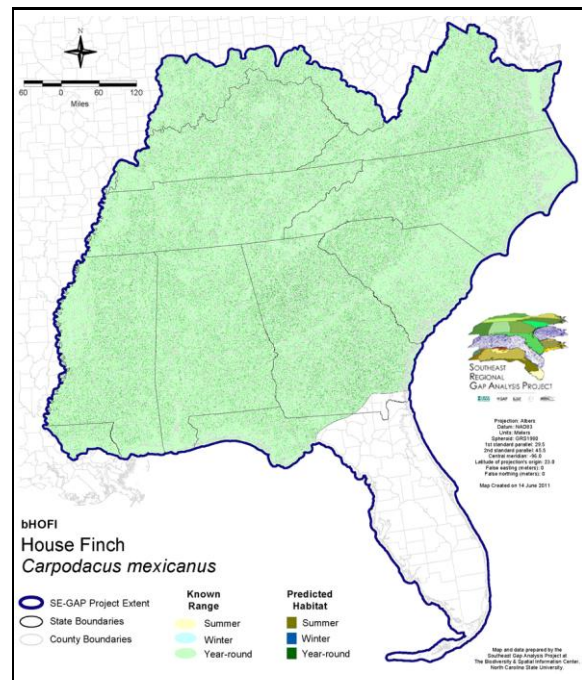
ITIS Species Code: 179191

NatureServe Element Code: ABPBY04040

KNOWN RANGE:



PREDICTED HABITAT:



Range Map Link: http://www.basic.ncsu.edu/segap/datazip/maps/SE_Range_bHOFI.pdf

Predicted Habitat Map Link: http://www.basic.ncsu.edu/segap/datazip/maps/SE_Dist_bHOFI.pdf

GAP Online Tool Link: <http://www.gapservice.ncsu.edu/segap/segap/index2.php?species=bHOFI>

Data Download: http://www.basic.ncsu.edu/segap/datazip/region/vert/bHOFI_se00.zip

PROTECTION STATUS:

Reported on March 14, 2011

Federal Status: ---

State Status: ID (P), KY (N), KY (N), NJ (INC/S), NV (YES), NY (PB), RI (Not Listed), UT (None), BC (4 (2005)), QC (Non suivie)

NS Global Rank: G5

NS State Rank: AK (SNA), AL (SNA), AR (SNA), AZ (S5), CA (SNR), CO (S5), CT (SNA), DC (SNA), DE (SNA), FL (SNA), GA (SNA), IA (SNA), ID (S5), IL (SNA), IN (SNA), KS (SNA), KY (SNA), KY (SNA), LA (SNA), MA (SNA), MD (SNA), ME (SNA), MI (SNA), MN (SNA), MO (SNA), MS (SNA), MT (S5), NC (SNA), ND (SNA), NE (S5), NH (SNA), NJ (SNA), NM (S5B,S5N), NV (S5), NY (SNA), OH (SNA), OK (S4), OR (S5), PA (SNA), RI (SNA), SC (SNA), SD (S4B,S3N), TN (SNA), TX (S5B), UT (S5), VA (SNA), VT (SNA), WA (S5), WI (SNA), WV (S5B,S5N), WY (S5B,S5N), AB (SNA), BC (S5B), MB (S4S5B), MB (S4S5B), NB (SNA), NS (SNA), ON (SNA), PE (SNA), QC (SNA), SK (S5N), SK (S5N), YT (SNA)

SUMMARY OF PREDICTED HABITAT BY MANAGMENT AND GAP PROTECTION STATUS:

	US FWS		US Forest Service		Tenn. Valley Author.		US DOD/ACOE	
	ha	%	ha	%	ha	%	ha	%
Status 1	2,458.5	< 1	207.8	< 1	0.0	0	0.0	0
Status 2	7,860.2	< 1	4,205.2	< 1	0.0	0	428.3	< 1
Status 3	136.0	< 1	73,904.8	< 1	7,502.1	< 1	52,759.6	< 1
Status 4	8.6	< 1	0.0	0	0.0	0	4.8	< 1
Total	10,463.2	< 1	78,317.7	1	7,502.1	< 1	53,192.7	< 1
	US Dept. of Energy		US Nat. Park Service		NOAA		Other Federal Lands	
	ha	%	ha	%	ha	%	ha	%
Status 1	0.0	0	2,159.3	< 1	8.4	< 1	0.0	0
Status 2	0.0	0	312.7	< 1	802.7	< 1	0.9	< 1
Status 3	4,631.6	< 1	9,184.3	< 1	0.0	0	347.9	< 1
Status 4	0.0	0	0.0	0	0.0	0	0.0	0
Total	4,631.6	< 1	11,656.3	< 1	811.1	< 1	348.8	< 1
	Native Am. Reserv.		State Park/Hist. Park		State WMA/Gameland		State Forest	
	ha	%	ha	%	ha	%	ha	%
Status 1	0.0	0	77.0	< 1	5.0	< 1	0.0	0
Status 2	0.0	0	342.2	< 1	36,931.1	< 1	31.6	< 1
Status 3	1,619.4	< 1	12,559.1	< 1	12,269.1	< 1	14,646.5	< 1
Status 4	0.0	0	0.0	0	9,344.9	< 1	3.2	< 1
Total	1,619.4	< 1	12,978.2	< 1	58,550.0	< 1	14,681.3	< 1
	State Coastal Reserve		ST Nat.Area/Preserve		Other State Lands		Private Cons. Easemt.	
	ha	%	ha	%	ha	%	ha	%
Status 1	0.0	0	372.3	< 1	0.0	0	0.0	0
Status 2	302.6	< 1	2,806.1	< 1	0.5	< 1	103.8	< 1
Status 3	0.0	0	703.0	< 1	1,112.9	< 1	2,222.6	< 1
Status 4	0.0	0	0.0	0	399.8	< 1	0.0	0
Total	302.6	< 1	3,881.4	< 1	1,513.2	< 1	2,326.4	< 1
	Private Land - No Res.		Water		Overall Total			
	ha	%	ha	%	ha	%		
Status 1	0.0	0	0.0	0	5,288.3	< 1		
Status 2	0.0	0	0.0	0	54,127.6	< 1		
Status 3	4.2	< 1	0.0	0	193,603.1	3		
Status 4	7,472,997.4	96	3,778.4	< 1	7,495,873.2	96		
Total	7,473,001.6	96	3,778.4	< 1	7,748,892.3	100		

GAP Status 1: An area having permanent protection from conversion of natural land cover and a mandated management plan in operation to maintain a natural state within which disturbance events (of natural type, frequency, and intensity) are allowed to proceed without interference or are mimicked through management.

GAP Status 2: An area having permanent protection from conversion of natural land cover and a mandated management plan in operation to maintain a primarily natural state, but which may receive use or management practices that degrade the quality of existing natural communities.

GAP Status 3: An area having permanent protection from conversion of natural land cover for the majority of the area, but subject to extractive uses of either a broad, low-intensity type or localized intense type. It also confers protection to federally listed endangered and threatened species throughout the area.

GAP Status 4: Lack of irrevocable easement or mandate to prevent conversion of natural habitat types to anthropogenic habitat types. Allows for intensive use throughout the tract. Also includes those tracts for which the existence of such restrictions or sufficient information to establish a higher status is unknown.

PREDICTED HABITAT MODEL(S):

Year-round Model:

Habitat Description: House finches were introduced from the western US. They prefer short grass areas with scattered trees and shrubs, such as is found in residential areas, parks, golf courses, and cemeteries. Avoids dense forests and agricultural areas except around some houses and barns (Nicholson 1997).

The nest site is usually near shrubs or buildings in a small ornamental conifer with dense foliage, or on a horizontal branch of a pine tree, in a tangle of vines, in a hanging potted plant, or on a ledge under the awning of a building (Nicholson 1997), from 5 to 35 feet above the ground (Ehrlich et al. 1988). The nest may be built on top of an old nest of a House Finch or other species, and may be in close proximity to other nesting pairs (Nicholson 1997). Individuals forage on the ground and are common at bird feeders (Ehrlich et al. 1988).

Quoted from State habitat notes - K.Cook 5-28-05

** elevation is from the North Carolina ancillary parameters by State in the "Edit Ancillary Spatial" window.

Elevation Mask: < 914m

Mask of Forest/Open Ecotone: Include within 30m of ecotone edge.

Selected Map Units:

Functional Group	Map Unit Name
Anthropogenic	Deciduous Plantations
Anthropogenic	Developed Open Space
Anthropogenic	Evergreen Plantations
Anthropogenic	High Intensity Developed
Anthropogenic	Low Intensity Developed
Anthropogenic	Medium Intensity Developed
Anthropogenic	Pasture/Hay
Anthropogenic	Row Crop
Anthropogenic	Successional Grassland/Herbaceous
Anthropogenic	Successional Grassland/Herbaceous (Other)
Anthropogenic	Successional Grassland/Herbaceous (Utility Swath)
Anthropogenic	Successional Shrub/Scrub (Clear Cut)
Anthropogenic	Successional Shrub/Scrub (Other)
Anthropogenic	Successional Shrub/Scrub (Utility Swath)
Forest/Woodland	East Gulf Coastal Plain Northern Dry Upland Hardwood Forest - Offsite Pine Modifier

CITATIONS: American Ornithologists' Union (AOU), Committee on Classification and Nomenclature. 1983. Check-list of North American Birds. Sixth Edition. American Ornithologists' Union, Allen Press, Inc., Lawrence, Kansas.

Banks, R. C., and M. R. Browning. 1995. Comments on the status of revived old names for some North American birds. *Auk* 112:633-648.

Belthoff, J. R., and S. A. Gauthreaux, Jr. 1991. Partial migration and differential winter distribution of house finches in the eastern United States. *Condor* 93:374-382.

Bennett, W. A. 1990. Scale of investigation and the detection of competition: an example from the house sparrow and house finch introductions in North America. *Am. Nat.* 135:725-747.

Berger, A.J. 1981. *Hawaiian Birdlife*. Second Edition. University of Hawaii Press, Honolulu, Hawaii. xv + 260 pp.

Bureau of Land Management. *Life History Summaries*.

Ehrlich, P.R., D.S. Dobkin, and D. Wheye. 1988. *The birder's handbook: a field guide to the natural history of North American birds*. Simon and Shuster, Inc., New York. xxx + 785 pp.

Fussell, J. III and M. Lyons. 1990. *Birds of the Outer Banks* [pamphlet]. Eastern National Parks and Monument Association Coastal Wildlife Refuge Society.

Harrison, C. 1978. *A field guide to the nests, eggs and nestlings of North American birds*. Collins, Cleveland, Ohio.

Jackson, J. A. 1992. From Hollywood to Broadway. *Birder's World*, February 1992., pp. 12-15.

Nicholson CP. 1997. Atlas of the breeding birds of Tennessee. Knoxville: University of Tennessee Press.

Potter, E. F., J. F. Parnell, and R. P. Teulings. 1980. Birds of the Carolinas. Univ. North Carolina Press, Chapel Hill. 408 pp.

Simpson MB Jr. 1992. Birds of the Blue Ridge Mountains. Chapel Hill and London: University of North Carolina Press.

Terres, J.K. 1980. The Audubon Society encyclopedia of North American birds. Alfred A. Knopf, New York.

For more information:: SE-GAP Analysis Project / BaSIC
127 David Clark Labs
Dept. of Biology, NCSU
Raleigh, NC 27695-7617
(919) 513-2853
www.basic.ncsu.edu/segap

Compiled: 15 September 2011

This data was compiled and/or developed
by the Southeast GAP Analysis Project at
The Biodiversity and Spatial Information
Center, North Carolina State University.