



# SOUTHEAST GAP ANALYSIS PROJECT



## Species Modeling Report

### House Sparrow

*Passer domesticus*

Taxa: Avian

Order: Passeriformes

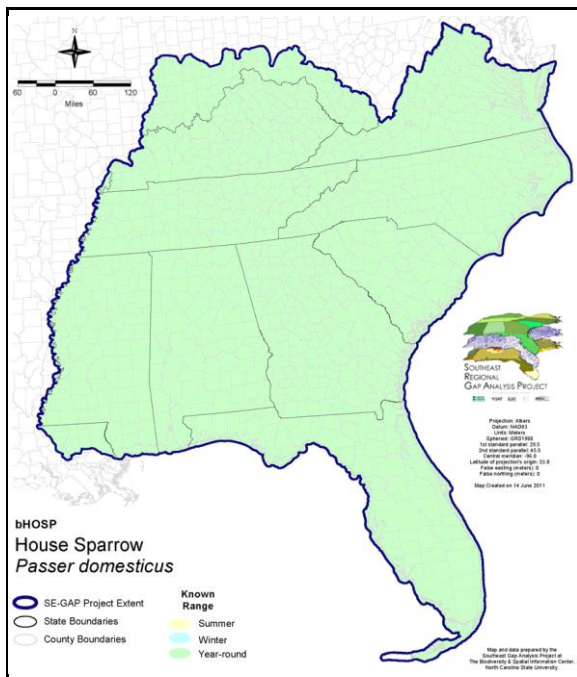
Family: Passeridae

SE-GAP Spp Code: **bHOSP**

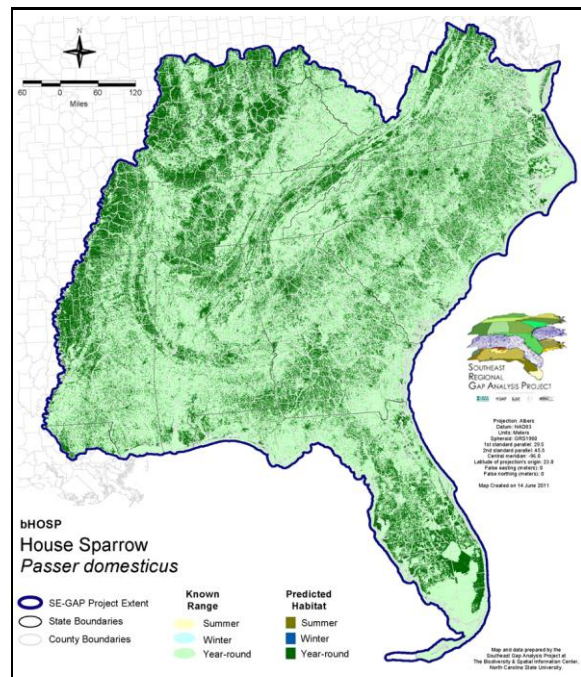
ITIS Species Code: 179628

NatureServe Element Code: ABPBZ01010

#### KNOWN RANGE:



#### PREDICTED HABITAT:



Range Map Link: [http://www.basic.ncsu.edu/segap/datazip/maps/SE\\_Range\\_bHOSP.pdf](http://www.basic.ncsu.edu/segap/datazip/maps/SE_Range_bHOSP.pdf)

Predicted Habitat Map Link: [http://www.basic.ncsu.edu/segap/datazip/maps/SE\\_Dist\\_bHOSP.pdf](http://www.basic.ncsu.edu/segap/datazip/maps/SE_Dist_bHOSP.pdf)

GAP Online Tool Link: <http://www.gapservice.ncsu.edu/segap/segap/index2.php?species=bHOSP>

Data Download: [http://www.basic.ncsu.edu/segap/datazip/region/vert/bHOSP\\_se00.zip](http://www.basic.ncsu.edu/segap/datazip/region/vert/bHOSP_se00.zip)

#### PROTECTION STATUS:

Reported on March 14, 2011

Federal Status: ---

State Status: KY (N), NJ (I/), NY (U), RI (Not Listed), UT (None), BC (7 (2005)), QC (Non suivie)

NS Global Rank: G5

NS State Rank: AK (SNA), AL (SNA), AR (SNA), AZ (SNA), CA (SNA), CO (SNA), CT (SNA), DC (SNA), DE (SNA), FL (SNA), GA (SNA), IA (SNA), ID (SNA), IL (SNA), IN (SNA), KS (SNA), KY (SNA), LA (SNA), MA (SNA), MD (SNA), ME (SNA), MI (SNA), MN (SNA), MO (SNA), MS (SNA), MT (SNA), NC (SNA), ND (SNA), NE (SNA), NH (SNA), NJ (SNA), NM (SNA), NV (SNA), NY (SNA), OH (SNA), OK (SNA), OR (SNA), PA (SNA), RI (SNA), SC (SNA), SD (SNA), TN (SNA), TX (SNA), UT (SNA), VA (SNA), VT (SNA), WA (SNA), WI (SNA), WV (SNA), WY (SNA), AB (SNA), BC (SNA), LB (SNA), MB (SNA), NB (SNA), NF (SNA), NS (SNA), NT (SNA), ON (SNA), PE (SNA), QC (SNA), SK (SNA), YT (SNA)

**SUMMARY OF PREDICTED HABITAT BY MANAGMENT AND GAP PROTECTION STATUS:**

	US FWS		US Forest Service		Tenn. Valley Author.		US DOD/ACOE	
	ha	%	ha	%	ha	%	ha	%
Status 1	5,506.2	< 1	213.1	< 1	0.0	0	0.0	0
Status 2	31,036.4	< 1	5,621.9	< 1	0.0	0	402.6	< 1
Status 3	284.0	< 1	87,573.4	< 1	21,482.6	< 1	159,404.2	< 1
Status 4	19.5	< 1	0.0	0	0.0	0	494.6	< 1
Total	36,846.2	< 1	93,408.4	< 1	21,482.6	< 1	160,301.3	< 1
	US Dept. of Energy		US Nat. Park Service		NOAA		Other Federal Lands	
	ha	%	ha	%	ha	%	ha	%
Status 1	0.0	0	6,148.5	< 1	0.2	< 1	1,103.5	< 1
Status 2	0.0	0	3,036.9	< 1	1,639.9	< 1	26.8	< 1
Status 3	4,607.6	< 1	28,748.3	< 1	0.0	0	2,406.2	< 1
Status 4	0.0	0	0.0	0	0.0	0	0.0	0
Total	4,607.6	< 1	37,933.7	< 1	1,640.1	< 1	3,536.5	< 1
	Native Am. Reserv.		State Park/Hist. Park		State WMA/Gameland		State Forest	
	ha	%	ha	%	ha	%	ha	%
Status 1	0.0	0	46.5	< 1	6.2	< 1	0.0	0
Status 2	0.0	0	690.8	< 1	72,420.2	< 1	33.7	< 1
Status 3	3,503.6	< 1	136,762.1	< 1	20,967.1	< 1	31,530.3	< 1
Status 4	0.0	0	0.0	0	6,197.3	< 1	0.9	< 1
Total	3,503.6	< 1	137,499.4	< 1	99,590.9	< 1	31,564.9	< 1
	State Coastal Reserve		ST Nat.Area/Preserve		Other State Lands		Private Cons. Easemt.	
	ha	%	ha	%	ha	%	ha	%
Status 1	0.0	0	463.8	< 1	0.0	0	0.0	0
Status 2	1,265.3	< 1	3,721.1	< 1	1.6	< 1	568.5	< 1
Status 3	0.0	0	2,925.2	< 1	5,539.3	< 1	40,933.5	< 1
Status 4	0.0	0	0.0	0	1,817.3	< 1	< 0.1	< 1
Total	1,265.3	< 1	7,110.0	< 1	7,358.2	< 1	41,502.2	< 1
	Private Land - No Res.		Water		Overall Total			
	ha	%	ha	%	ha	%		
Status 1	0.0	0	0.0	0	13,488.0	< 1		
Status 2	0.0	0	0.0	0	120,465.5	< 1		
Status 3	86.6	< 1	0.0	0	546,754.1	2		
Status 4	32,700,931.9	98	18,793.3	< 1	32,734,432.6	98		
Total	32,701,018.5	98	18,793.3	< 1	33,415,140.2	100		

GAP Status 1: An area having permanent protection from conversion of natural land cover and a mandated management plan in operation to maintain a natural state within which disturbance events (of natural type, frequency, and intensity) are allowed to proceed without interference or are mimicked through management.

GAP Status 2: An area having permanent protection from conversion of natural land cover and a mandated management plan in operation to maintain a primarily natural state, but which may receive use or management practices that degrade the quality of existing natural communities.

GAP Status 3: An area having permanent protection from conversion of natural land cover for the majority of the area, but subject to extractive uses of either a broad, low-intensity type or localized intense type. It also confers protection to federally listed endangered and threatened species throughout the area.

GAP Status 4: Lack of irrevocable easement or mandate to prevent conversion of natural habitat types to anthropogenic habitat types. Allows for intensive use throughout the tract. Also includes those tracts for which the existence of such restrictions or sufficient information to establish a higher status is unknown.

## PREDICTED HABITAT MODEL(S):

### Year-round Model:

Habitat Description: Always associated with humans and never found in a habitat unaltered by human activity. Found in a wide variety of areas such as cities, suburbs, farms (Kaufman 1996), and woodland edges near human habitation. Found especially around horses (Ehrlich et al. 1988).

Prefers to nest in a cavity such as a natural cavity in a tree, an abandoned woodpecker hole, a birdhouse, a hole in a wall, under the eaves of a building, behind a wall-mounted sign, or in the nest of a Cliff or Barn Swallow (Nicholson 1997). Can be an aggressive competitor with native species for cavities, sometimes ejecting eggs or young. If a cavity is not available, will build a nest in the fork of a tree branch up to 40 feet above the ground. Forages primarily on the ground (Ehrlich et al. 1988) but is an opportunistic feeder; will frequent bird feeders and pick insects from the grill of cars (Kaufman 1996).

Quoted from state habitat notes - K. Cook 5-30-05

### Selected Map Units:

Functional Group	Map Unit Name
Anthropogenic	Developed Open Space
Anthropogenic	High Intensity Developed
Anthropogenic	Low Intensity Developed
Anthropogenic	Medium Intensity Developed
Anthropogenic	Pasture/Hay
Anthropogenic	Row Crop

**CITATIONS:** Aguero, D. A., R. J. Johnson, and K. M. Eskridge. 1991. Monofilament lines repel house sparrows from feeding sites. *Wildl. Soc. Bull.* 19:416-422.

American Ornithologists' Union (AOU), Committee on Classification and Nomenclature. 1983. Check-list of North American Birds. Sixth Edition. American Ornithologists' Union, Allen Press, Inc., Lawrence, Kansas.

Anderson, T. R. 1994. Breeding biology of house sparrows in northern lower Michigan. *Wilson Bull.* 106:537-548.

Barlow, J.C. 1973. Status of the North American population of the European tree sparrow. In a symposium on the house sparrow (*PASSER DOMESTICUS*) in North America. *Amer. Ornith. Union, Monog. No. 14.*

Barrows, W. B. 1889. The English sparrow (*PASSER DOMESTICUS*) in North America. USDA, Div. of Economic Ornithology and Mammalogy, Bull. 1. 405 pp.

Bennett, W. A. 1990. Scale of investigation and the detection of competition: an example from the house sparrow and house finch introductions in North America. *Am. Nat.* 135:725-747.

Bent, A. C. 1968. Life histories of North American cardinals, grosbeaks, buntings, towhees, finches, sparrows, and allies. *Bull. U.S. Nat. Mus.* 237.

Ehrlich, P.R., D.S. Dobkin, and D. Wheye. 1988. *The birder's handbook: a field guide to the natural history of North American birds.* Simon and Shuster, Inc., New York. xxx + 785 pp.

Fussell, J. III and M. Lyons. 1990. *Birds of the Outer Banks [pamphlet].* Eastern National Parks and Monument Association Coastal Wildlife Refuge Society.

Harrison, C. 1978. *A field guide to the nests, eggs and nestlings of North American birds.* Collins, Cleveland, Ohio.

Harrison, H.H. 1979. *A field guide to western birds' nests.* Houghton Mifflin Company, Boston. 279 pp.

Kaufman K. 1996. *Lives of North American Birds.* Boston, New York: Houghton Mifflin Company.

Kendeigh, S.C. 1973. Symposium on house sparrow and European tree sparrow. Lawrence. 127 pp.

Nicholson CP. 1997. *Atlas of the breeding birds of Tennessee.* Knoxville: University of Tennessee Press.

Pochop, P. A., R. J. Johnson, and K. M. Eskridge. 1993. House sparrow response to monofilament lines at nest boxes and adjacent feeding sites. *Wilson Bull.* 105:504-513.

Potter, E. F., J. F. Parnell, and R. P. Teulings. 1980. *Birds of the Carolinas.* Univ. North Carolina Press, Chapel Hill. 408 pp.

Pratt, H.D., P.L. Bruner, and D.G. Berrett. 1987. *A field guide to the birds of Hawaii and the tropical Pacific.* Princeton University Press, Princeton, New Jersey. 409 pp. + 45 plates.

- Raffaele, H.A. 1983. A guide to the birds of Puerto Rico and the Virgin Islands. Fondo Educativo Interamericano, San Juan, Puerto Rico. 255 pp.
- Raffaele, H.A. 1989. A guide to the birds of Puerto Rico and the Virgin Islands. Revised edition. Princeton Univ. Press. 220 pp.
- Ridgely, R.S., and G. Tudor. 1989. The birds of South America. Vol. 1. The Oscine passerines. Univ. Texas Press, Austin. 516 pp.
- Summers-Smith, D. 1963. The house sparrow. London. xvi + 269 pp.
- Summers-Smith, J. D. 1988. The sparrows. Poyser. 352 pp.
- Terres, J.K. 1980. The Audubon Society encyclopedia of North American birds. Alfred A. Knopf, New York.

---

For more information:: SE-GAP Analysis Project / BaSIC  
127 David Clark Labs  
Dept. of Biology, NCSU  
Raleigh, NC 27695-7617  
(919) 513-2853  
[www.basic.ncsu.edu/segap](http://www.basic.ncsu.edu/segap)

Compiled: 15 September 2011

This data was compiled and/or developed  
by the Southeast GAP Analysis Project at  
The Biodiversity and Spatial Information  
Center, North Carolina State University.