



SOUTHEAST GAP ANALYSIS PROJECT



Species Modeling Report

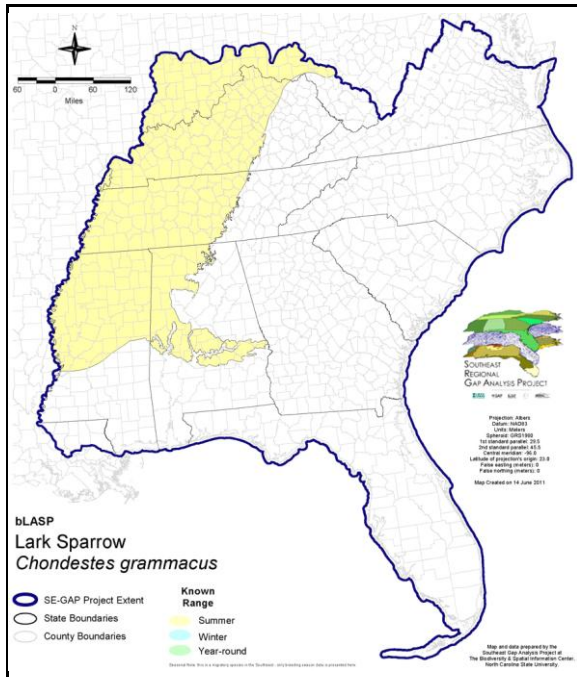
Lark Sparrow

Chondestes grammacus

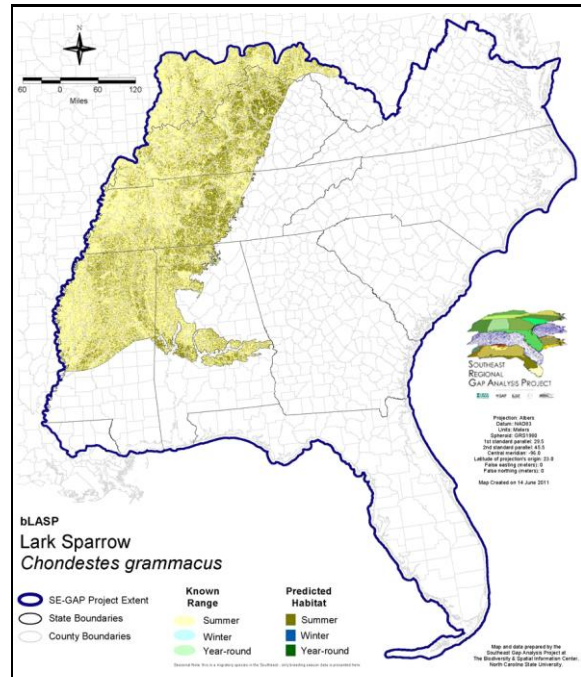
Taxa: Avian
 Order: Passeriformes
 Family: Emberizidae

SE-GAP Spp Code: **blASP**
 ITIS Species Code: 179371
 NatureServe Element Code: ABPBX96010

KNOWN RANGE:



PREDICTED HABITAT:



Range Map Link: http://www.basic.ncsu.edu/segap/datazip/maps/SE_Range_bLASP.pdf

Predicted Habitat Map Link: http://www.basic.ncsu.edu/segap/datazip/maps/SE_Dist_bLASP.pdf

GAP Online Tool Link: <http://www.gapservice.ncsu.edu/segap/segap/index2.php?species=bLASP>

Data Download: http://www.basic.ncsu.edu/segap/datazip/region/vert/bLASP_se00.zip

PROTECTION STATUS:

Reported on March 14, 2011

Federal Status: ---

State Status: AR (W), AR (W), CA (None), ID (P), ID (P), KY (T), MD (X), MI (X), NC (SR), NC (SR), NJ (S), NV (YES), NY (PB), OH (E), RI (Not Listed), TN (T), UT (None), WI (SC/M), WI (SC/M), BC (2 (2005)), BC (2 (2005)), QC (Non suivie)

NS Global Rank: G5

NS State Rank: AK (SNA), AL (S3B), AR (S3S4B), AR (S3S4B), AZ (S5), CA (SNR), CO (S4), CT (SNA), DC (SNA), DE (SNA), FL (SNA), GA (S3S4), IA (S4B), ID (S5B), ID (S5B), IL (S5), IN (S3B), IN (S3B), KS (S5B), KY (S2S3B), LA (S2S3B), MA (S1N), MD (SXB), ME (SNA), MI (SX), MN (SNRB), MO (SNRB), MS (S5B), MS (S5B), MT (S5B), MT (S5B), NC (S1B), NC (S1B), ND (SNRB), NE (S4), NH (SNA), NJ (SNA), NM (S4B,S4N), NV (S4B), NY (SNRN), OH (S1), OK (S3S5), OR (S4?), PA (SNA), RI (SNA), SC (SNRB), SD (S5B), SD (S5B), TN (S1B), TX (S4B), UT (S5B,S2N), VA (SHB), VA (SHB), WA (S3B), WA (S3B), WI (S2B), WI (S2B), WV (S1B), WY (S5B,S5N), AB (S4), BC (S2B), BC (S2B), MB (S4B), MB (S4B), NB (SNA), NF (SNA), NS (SNA), ON (SHB), PE (SNA), QC (SNA), SK (S5B), YT (SNA)

SUMMARY OF PREDICTED HABITAT BY MANAGMENT AND GAP PROTECTION STATUS:

	US FWS		US Forest Service		Tenn. Valley Author.		US DOD/ACOE	
	ha	%	ha	%	ha	%	ha	%
Status 1	981.3	< 1	3.6	< 1	0.0	0	0.0	0
Status 2	7,671.2	< 1	1,385.4	< 1	0.0	0	63.5	< 1
Status 3	61.8	< 1	8,532.4	< 1	4,128.0	< 1	27,942.2	< 1
Status 4	0.0	0	0.0	0	0.0	0	0.0	0
Total	8,714.3	< 1	9,921.3	< 1	4,128.0	< 1	28,005.8	< 1
	US Dept. of Energy		US Nat. Park Service		NOAA		Other Federal Lands	
	ha	%	ha	%	ha	%	ha	%
Status 1	0.0	0	110.4	< 1	0.0	0	0.0	0
Status 2	0.0	0	0.0	0	0.0	0	0.0	0
Status 3	0.0	0	1,798.7	< 1	0.0	0	200.1	< 1
Status 4	0.0	0	0.0	0	0.0	0	0.0	0
Total	0.0	0	1,909.1	< 1	0.0	0	200.1	< 1
	Native Am. Reserv.		State Park/Hist. Park		State WMA/Gameland		State Forest	
	ha	%	ha	%	ha	%	ha	%
Status 1	0.0	0	11.9	< 1	0.0	0	0.0	0
Status 2	0.0	0	0.0	0	16,491.2	< 1	0.0	0
Status 3	903.1	< 1	3,880.9	< 1	8,034.3	< 1	21.9	< 1
Status 4	0.0	0	0.0	0	2,386.4	< 1	0.0	0
Total	903.1	< 1	3,892.8	< 1	26,911.8	< 1	21.9	< 1
	State Coastal Reserve		ST Nat.Area/Preserve		Other State Lands		Private Cons. Easemt.	
	ha	%	ha	%	ha	%	ha	%
Status 1	0.0	0	70.6	< 1	0.0	0	0.0	0
Status 2	0.0	0	2,329.8	< 1	0.4	< 1	187.7	< 1
Status 3	0.0	0	958.6	< 1	824.2	< 1	2,167.7	< 1
Status 4	0.0	0	0.0	0	6.9	< 1	0.0	0
Total	0.0	0	3,359.0	< 1	831.5	< 1	2,355.5	< 1
	Private Land - No Res.		Water		Overall Total			
	ha	%	ha	%	ha	%		
Status 1	0.0	0	0.0	0	1,177.7	< 1		
Status 2	0.0	0	0.0	0	28,129.1	< 1		
Status 3	0.0	0	0.0	0	59,453.8	1		
Status 4	6,574,457.1	98	3,039.2	< 1	6,582,275.9	99		
Total	6,574,457.1	98	3,039.2	< 1	6,671,036.6	100		

GAP Status 1: An area having permanent protection from conversion of natural land cover and a mandated management plan in operation to maintain a natural state within which disturbance events (of natural type, frequency, and intensity) are allowed to proceed without interference or are mimicked through management.

GAP Status 2: An area having permanent protection from conversion of natural land cover and a mandated management plan in operation to maintain a primarily natural state, but which may receive use or management practices that degrade the quality of existing natural communities.

GAP Status 3: An area having permanent protection from conversion of natural land cover for the majority of the area, but subject to extractive uses of either a broad, low-intensity type or localized intense type. It also confers protection to federally listed endangered and threatened species throughout the area.

GAP Status 4: Lack of irrevocable easement or mandate to prevent conversion of natural habitat types to anthropogenic habitat types. Allows for intensive use throughout the tract. Also includes those tracts for which the existence of such restrictions or sufficient information to establish a higher status is unknown.

PREDICTED HABITAT MODEL(S):

Summer Model:

Habitat Description: Breeding habitat includes structurally open habitats or ecotones; grass/herbaceous ground covering containing or adjoining scattered trees or shrubs, i.e. cultivated habitats, orchards or other open or park-like woodlands, grasslands and savanna, fallow fields with brushy edges (Martin and Parrish 200). In Kentucky, frequent various disturbance features such as rock outcrops, sandhills, and erosion gullies that provide sparse groundcover interspersed with bare substrate. In Tennessee, important habitats include limestone cedar glades and pastures in the Central Basin. M. Rubino, 11jan05.

Selected Map Units:

Functional Group	Map Unit Name
Anthropogenic	Bare Sand
Anthropogenic	Bare Soil
Anthropogenic	Pasture/Hay
Anthropogenic	Quarry/Strip Mine/Gravel Pit
Anthropogenic	Successional Grassland/Herbaceous
Anthropogenic	Successional Grassland/Herbaceous (Other)
Anthropogenic	Successional Grassland/Herbaceous (Utility Swath)
Anthropogenic	Successional Shrub/Scrub (Clear Cut)
Anthropogenic	Successional Shrub/Scrub (Other)
Anthropogenic	Successional Shrub/Scrub (Utility Swath)
Forest/Woodland	Alabama Ketona Glade and Woodland
Forest/Woodland	Appalachian Shale Barrens
Forest/Woodland	Central Appalachian Alkaline Glade and Woodland
Forest/Woodland	Central Appalachian Pine-Oak Rocky Woodland
Forest/Woodland	Central Interior Highlands Calcareous Glade and Barrens
Forest/Woodland	Central Interior Highlands Dry Acidic Glade and Barrens
Forest/Woodland	Cumberland Sandstone Glade and Barrens
Forest/Woodland	East Gulf Coastal Plain Black Belt Calcareous Prairie and Woodland - Woodland Modifier
Forest/Woodland	Nashville Basin Limestone Glade
Forest/Woodland	Ridge and Valley Calcareous Valley Bottom Glade and Woodland
Prairie	Bluegrass Basin Savanna and Woodland
Prairie	East Gulf Coastal Plain Black Belt Calcareous Prairie and Woodland
Prairie	East Gulf Coastal Plain Black Belt Calcareous Prairie and Woodland - Herbaceous Modifier
Prairie	East Gulf Coastal Plain Jackson Plain Prairie and Barrens
Prairie	East Gulf Coastal Plain Jackson Prairie and Woodland
Prairie	Eastern Highland Rim Prairie and Barrens
Prairie	Eastern Highland Rim Prairie and Barrens - Dry Modifier
Prairie	Pennyroyal Karst Plain Prairie and Barrens
Prairie	Southern Ridge and Valley Patch Prairie
Prairie	Western Highland Rim Prairie and Barrens

CITATIONS: American Ornithologists' Union (AOU), Committee on Classification and Nomenclature. 1983. Check-list of North American Birds. Sixth Edition. American Ornithologists' Union, Allen Press, Inc., Lawrence, Kansas.

Carter, M., G. Fenwick, C. Hunter, D. Pashley, D. Petit, J. Price, and J. Trapp. 1996. Watchlist 1996:For the future. Field Notes 50(3):238-240.

Droege, S., and J.R. Sauer. 1990. North American Breeding Bird Survey, annual summary, 1989. U.S. Fish and Wildlife Service, Biological Report 90(8). 22 pp.

Ehrlich, P.R., D.S. Dobkin, and D. Wheye. 1988. The birder's handbook:a field guide to the natural history of North American birds. Simon and Shuster, Inc., New York. xxx + 785 pp.

Godfrey, W.E. 1966. The birds of Canada. National Museums of Canada. Ottawa. 428 pp.

Kaufman K. 1996. Lives of North American Birds. Boston, New York: Houghton Mifflin Company.

Martin, J. W., and J. R. Parrish. 2000. Lark Sparrow (*Chondestes grammacus*). In The Birds of North America, No. 488 (A. Poole and F. Gill, eds.). The Birds of North America, Inc., Philadelphia, PA.

Nicholson CP. 1997. Atlas of the breeding birds of Tennessee. Knoxville: University of Tennessee Press.

Oberholser, H.C. 1974. The bird life of Texas. 2 vols. Univ. of Texas Press, Austin.

Pearson, T.G. 1959. Birds of North Carolina. Raleigh, NC: Bynum Printing Company.

Potter, E. F., J. F. Parnell, and R. P. Teulings. 1980. Birds of the Carolinas. Univ. North Carolina Press, Chapel Hill. 408 pp.

Pough, R. H. 1957. Audubon Western Bird Guide. Doubleday. 316 pp.

Terres, J.K. 1980. The Audubon Society encyclopedia of North American birds. Alfred A. Knopf, New York.

For more information:: SE-GAP Analysis Project / BaSIC
127 David Clark Labs
Dept. of Biology, NCSU
Raleigh, NC 27695-7617
(919) 513-2853
www.basic.ncsu.edu/segap

Compiled: 15 September 2011

This data was compiled and/or developed
by the Southeast GAP Analysis Project at
The Biodiversity and Spatial Information
Center, North Carolina State University.