



SOUTHEAST GAP ANALYSIS PROJECT



Species Modeling Report

Lesser Scaup

Aythya affinis

Taxa: Avian

Order: Anseriformes

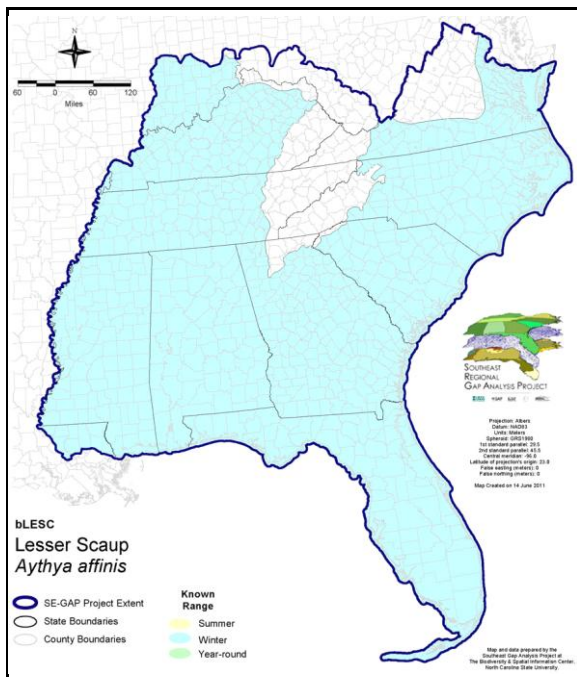
Family: Anatidae

SE-GAP Spp Code: **bLESC**

ITIS Species Code: 175134

NatureServe Element Code: ABNJB11070

KNOWN RANGE:



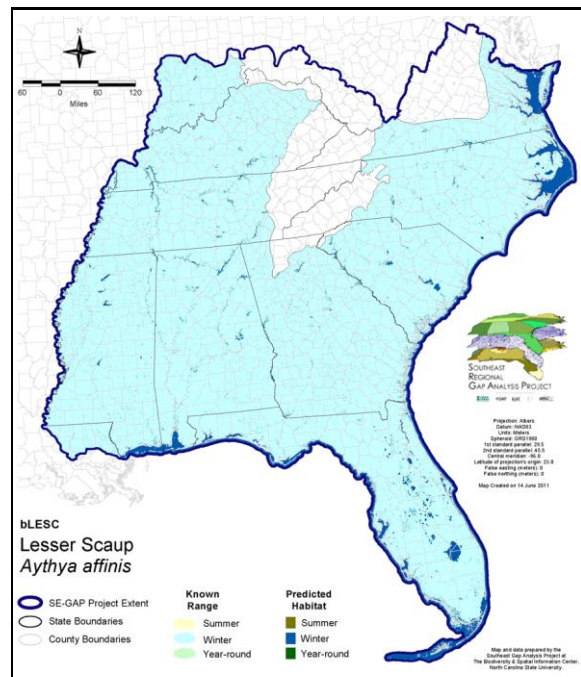
Range Map Link: http://www.basic.ncsu.edu/segap/datazip/maps/SE_Range_bLESC.pdf

Predicted Habitat Map Link: http://www.basic.ncsu.edu/segap/datazip/maps/SE_Dist_bLESC.pdf

GAP Online Tool Link: <http://www.gapservice.ncsu.edu/segap/segap/index2.php?species=bLESC>

Data Download: http://www.basic.ncsu.edu/segap/datazip/region/vert/bLESC_se00.zip

PREDICTED HABITAT:



PROTECTION STATUS:

Reported on March 14, 2011

Federal Status: ---

State Status: AL (GB), ID (G), KY (N), NV (YES), NY (PB - GS), RI (Not Listed), UT (None), UT (None), WI (SC/M), WI (SC/M), BC (4 (2005)), QC (Non suivie)

NS Global Rank: G5

NS State Rank: AK (S3N,S5B), AL (S5N), AR (S4N), AZ (S5N), CA (SNRB,SNRN), CO (S4B), CO (S4B), CT (SNA), DC (S2S3N), DE (S4N), FL (SNRN), GA (S5), HI (SNA), IA (S5N), ID (S3), IL (SNA), IN (S4N), KS (S4N), KY (S4N), LA (S5N), MA (S5N), MD (S4N), ME (S1S3N), MI (SNRN), MN (SNRB,SNRM), MO (SNRN,SNRM), MS (S4N), MT (S5B), MT (S5B), NC (S5N), ND (SNRB), NE (S3), NH (SNA), NJ (SNA), NM (S4B,S5N), NV (S1B,S3N), NY (SNA), OH (SNA), OK (S5N), OR (S3B,S4N), PA (S3N), RI (SNA), SC (SNRN), SD (S4B), SD (S4B), TN (S4N), TX (S3B,S5N), UT (SHB,S3S4N), UT (SHB,S3S4N), VA (SNRN), VT (S4N), WA (S3N,S4B), WI (S3N), WI (S3N), WV (S3N), WY (S3B,S4N), AB (S5), BC (S4S5B,S5N), LB (S3S4B), MB (S4S5B), MB (S4S5B), NB (S4M), NF (S2N), NS (S2N), NT (SNRB), ON (S4), ON (S4), PE (SNA), QC (S4B), SK (S5B,S5M,S3N), YT (S3B)

SUMMARY OF PREDICTED HABITAT BY MANAGMENT AND GAP PROTECTION STATUS:

	US FWS		US Forest Service		Tenn. Valley Author.		US DOD/ACOE	
	ha	%	ha	%	ha	%	ha	%
Status 1	14,899.1	4	0.0	0	0.0	0	0.0	0
Status 2	7,728.6	2	41.3	< 1	0.0	0	46.4	< 1
Status 3	205.6	< 1	400.1	< 1	106.1	< 1	6,230.1	2
Status 4	1.6	< 1	0.0	0	0.0	0	11.3	< 1
Total	22,834.8	6	441.5	< 1	106.1	< 1	6,287.9	2
	US Dept. of Energy		US Nat. Park Service		NOAA		Other Federal Lands	
	ha	%	ha	%	ha	%	ha	%
Status 1	0.0	0	31,526.6	9	362.3	< 1	661.8	< 1
Status 2	0.0	0	8,550.4	2	9,770.5	3	2.6	< 1
Status 3	0.0	0	1,977.1	< 1	0.0	0	1.0	< 1
Status 4	0.0	0	3.0	0	0.0	0	0.0	0
Total	0.0	0	42,057.1	11	10,132.8	3	665.4	< 1
	Native Am. Reserv.		State Park/Hist. Park		State WMA/Gameland		State Forest	
	ha	%	ha	%	ha	%	ha	%
Status 1	0.0	0	3.9	< 1	0.0	0	0.0	0
Status 2	0.0	0	50.4	< 1	17,948.7	5	0.0	0
Status 3	0.0	0	12,864.8	3	2,153.0	< 1	582.5	< 1
Status 4	0.0	0	0.0	0	231.1	< 1	0.0	0
Total	0.0	0	12,919.1	3	20,332.8	5	582.5	< 1
	State Coastal Reserve		ST Nat.Area/Preserve		Other State Lands		Private Cons. Easemt.	
	ha	%	ha	%	ha	%	ha	%
Status 1	0.0	0	177.5	< 1	0.0	0	0.0	0
Status 2	8,793.2	2	4,970.3	1	0.0	0	5.5	< 1
Status 3	0.0	0	182.2	< 1	190.3	< 1	386.2	< 1
Status 4	0.0	0	0.0	0	0.3	< 1	0.0	0
Total	8,793.2	2	5,329.9	1	190.5	< 1	391.7	< 1
	Private Land - No Res.		Water		Overall Total			
	ha	%	ha	%	ha	%	ha	%
Status 1	0.0	2	0.0	0	47,631.2 13			
Status 2	0.6	< 1	0.0	4	57,908.6 16			
Status 3	72.8	< 1	< 0.1	< 1	25,351.7 7			
Status 4	201,042.5	54	37,639.3	10	239,158.6 65			
Total	201,116.0	54	37,639.5	10	370,050.1 100			

GAP Status 1: An area having permanent protection from conversion of natural land cover and a mandated management plan in operation to maintain a natural state within which disturbance events (of natural type, frequency, and intensity) are allowed to proceed without interference or are mimicked through management.

GAP Status 2: An area having permanent protection from conversion of natural land cover and a mandated management plan in operation to maintain a primarily natural state, but which may receive use or management practices that degrade the quality of existing natural communities.

GAP Status 3: An area having permanent protection from conversion of natural land cover for the majority of the area, but subject to extractive uses of either a broad, low-intensity type or localized intense type. It also confers protection to federally listed endangered and threatened species throughout the area.

GAP Status 4: Lack of irrevocable easement or mandate to prevent conversion of natural habitat types to anthropogenic habitat types. Allows for intensive use throughout the tract. Also includes those tracts for which the existence of such restrictions or sufficient information to establish a higher status is unknown.

PREDICTED HABITAT MODEL(S):

Winter Model:

Habitat Description: Unlike the greater scaup, lesser scaup will use freshwater environments in addition to brackish and salt waters (Stevenson & Anderson 1994). They winter mainly in open deep waters, of coastal bays, marshes, estuaries and inland lakes and reservoirs (Austin et al. 1998).

Ecosystem Classifiers: Brackish, coastal & freshwater marshes, open water, lakes/pond/rivers. Amy Silvano 05sept05

Hydrography Mask:

Utilizes flowing water features with buffers of 30m from and unlimited into selected water features.

Utilizes open water features with buffers of 30m from and unlimited into selected water features.

Selected Map Units:

Functional Group	Map Unit Name
Brackish Tidal Marsh & Wetland	Atlantic Coastal Plain Central Salt and Brackish Tidal Marsh
Brackish Tidal Marsh & Wetland	Atlantic Coastal Plain Embayed Region Tidal Salt and Brackish Marsh
Brackish Tidal Marsh & Wetland	Atlantic Coastal Plain Indian River Lagoon Tidal Marsh
Brackish Tidal Marsh & Wetland	Atlantic Coastal Plain Northern Sea-Level Fen
Brackish Tidal Marsh & Wetland	Atlantic Coastal Plain Northern Tidal Salt Marsh
Brackish Tidal Marsh & Wetland	Atlantic Coastal Plain Northern Tidal Wooded Swamp
Brackish Tidal Marsh & Wetland	Atlantic Coastal Plain Southern Tidal Wooded Swamp
Brackish Tidal Marsh & Wetland	East Gulf Coastal Plain Tidal Wooded Swamp
Brackish Tidal Marsh & Wetland	Florida Big Bend Salt-Brackish Tidal Marsh
Brackish Tidal Marsh & Wetland	Mississippi Sound Salt and Brackish Tidal Marsh
Brackish Tidal Marsh & Wetland	South Florida Everglades Sawgrass Marsh
Brackish Tidal Marsh & Wetland	South Florida Mangrove Swamp
Brackish Tidal Marsh & Wetland	Southwest Florida Perched Barriers Salt Swamp and Lagoon - Mangrove Modifier
Brackish Tidal Marsh & Wetland	Southwest Florida Perched Barriers Salt Swamp and Lagoon - Marsh Modifier
Coastal Dune & Freshwater Wetland	Atlantic and Gulf Coastal Plain Interdunal Wetland
Freshwater Tidal Marsh & Wetland	Atlantic Coastal Plain Central Fresh-Oligohaline Tidal Marsh
Freshwater Tidal Marsh & Wetland	Atlantic Coastal Plain Embayed Region Tidal Freshwater Marsh
Freshwater Tidal Marsh & Wetland	Atlantic Coastal Plain Northern Fresh and Oligohaline Tidal Marsh
Freshwater Tidal Marsh & Wetland	Florida Big Bend Fresh-Oligohaline Tidal Marsh
Water	Open Water (Brackish/Salt)
Water	Open Water (Fresh)
Wetlands	Atlantic Coastal Plain Depression Pondshore
Wetlands	Atlantic Coastal Plain Large Natural Lakeshore
Wetlands	Atlantic Coastal Plain Northern Pondshore
Wetlands	Atlantic Coastal Plain Xeric River Dune
Wetlands	Central Florida Herbaceous Pondshore
Wetlands	Cumberland Riverscour
Wetlands	East Gulf Coastal Plain Northern Depression Pondshore
Wetlands	East Gulf Coastal Plain Southern Depression Pondshore
Wetlands	South Florida Pond-Apple/Popash Slough
Wetlands	Southern Coastal Plain Spring-run Stream Aquatic Vegetation
Wetlands	Unconsolidated Shore (Lake/River/Pond)

CITATIONS: Afton, A. D. 1984. Influence of age and time on reproductive performance of female lesser scaup. *Auk* 101:255-265.

Afton, A. D., R. H. Hier, and S. L. Paulus. 1991. Lesser scaup diets during migration and winter in the Mississippi flyway. *Can. J. Zool.* 69:328-333.

American Ornithologists' Union (AOU), Committee on Classification and Nomenclature. 1983. Check-list of North American Birds. Sixth Edition. American Ornithologists' Union, Allen Press, Inc., Lawrence, Kansas.

Austin, J.E., C.M. Custer, and A.D. Afton. 1998. Lesser Scaup (*Aythya affinis*). In *The Birds of North America*, No. 338 (A. Poole and F. Gill, eds.). The Birds of North America, Inc., Philadelphia, PA.

Bellrose, F.C. 1976. Ducks, geese and swans of North America. Stackpole Books, Harrisburg, Pa.

Harrison, C. 1978. A field guide to the nests, eggs and nestlings of North American birds. Collins, Cleveland, Ohio.

Johnson, S.R., and D.R. Herter. 1989. The birds of the Beaufort Sea. BP Exploration (Alaska) Inc., Anchorage, Alaska. 372 pp.

Madge, S., and H. Burn. 1988. Waterfowl:an identification guide to the ducks, geese and swans of the world. Houghton Mifflin Co., Boston. 298 pp.

Nudds, T. D., and R. W. Cole. 1991. Changes in populations and breeding success of boreal forest ducks. J. Wildl. Manage. 55:569-573.

Ridgely, R. S., and J. A. Gwynne, Jr. 1989. A guide to the birds of Panama with Costa Rica, Nicaragua, and Honduras. Second edition. Princeton Univ. Press, Princeton, New Jersey. 534 pp.

Root, T. 1988. Atlas of wintering North American birds:An analysis of Christmas Bird Count data. University of Chicago Press. 336 pp.

Terres, J.K. 1980. The Audubon Society encyclopedia of North American birds. Alfred A. Knopf, New York.

For more information:: SE-GAP Analysis Project / BaSIC
127 David Clark Labs
Dept. of Biology, NCSU
Raleigh, NC 27695-7617
(919) 513-2853
www.basic.ncsu.edu/segap

Compiled: 15 September 2011

This data was compiled and/or developed
by the Southeast GAP Analysis Project at
The Biodiversity and Spatial Information
Center, North Carolina State University.