



SOUTHEAST GAP ANALYSIS PROJECT



Species Modeling Report

Pied-billed Grebe

Podilymbus podiceps

Taxa: Avian

Order: Podicipediformes

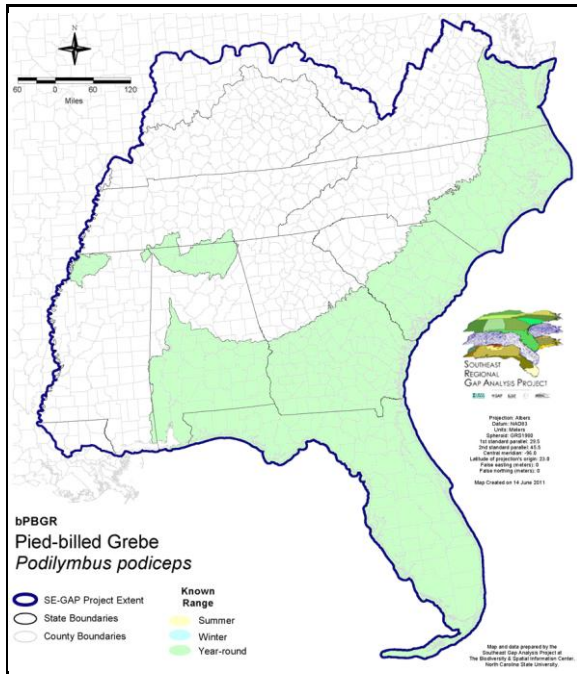
Family: Podicipedidae

SE-GAP Spp Code: **bPBGR**

ITIS Species Code: 174505

NatureServe Element Code: ABNCA02010

KNOWN RANGE:



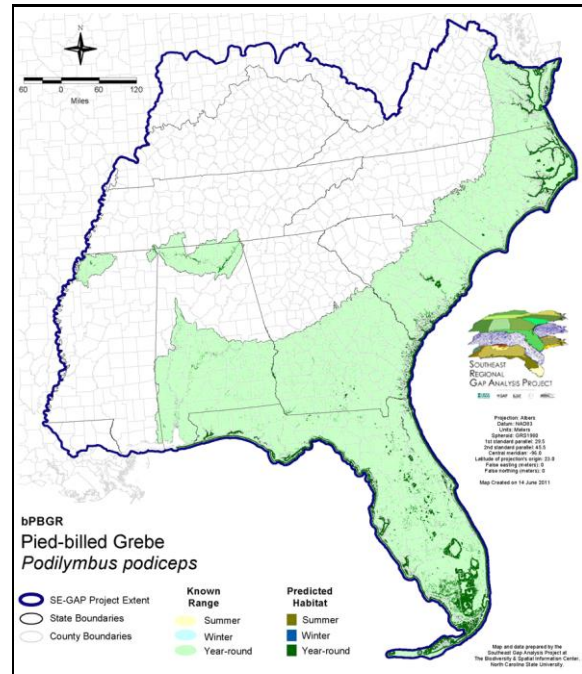
Range Map Link: http://www.basic.ncsu.edu/segap/datazip/maps/SE_Range_bPBGR.pdf

Predicted Habitat Map Link: http://www.basic.ncsu.edu/segap/datazip/maps/SE_Dist_bPBGR.pdf

GAP Online Tool Link: <http://www.gapservice.ncsu.edu/segap/segap/index2.php?species=bPBGR>

Data Download: http://www.basic.ncsu.edu/segap/datazip/region/vert/bPBGR_se00.zip

PREDICTED HABITAT:



PROTECTION STATUS:

Reported on March 14, 2011

Federal Status: ---

State Status: AR (W), CT (E), CT (E), DE (E), ID (P), IL (RT), KY (E), MA (E), NH (T), NH (T), NJ (E/S), NV (YES), NY (T), RI (State Endangered), UT (None), BC (4 (2005)), QC (Non suivie)

NS Global Rank: G5

NS State Rank: AK (S2S3B), AL (S3B,S5N), AR (S2B,S4N), AZ (S5), CA (SNR), CO (S5B), CO (S5B), CT (S1B), CT (S1B), DC (S4S5N), DE (S1B,S3N), FL (SNRB,SNRN), GA (S4S5), HI (SNA), IA (S4B,S4N), ID (S4B,S3N), IL (S3), IN (S3B), IN (S3B), KS (S2B,S4N), KY (S1B,S4N), LA (S4B,S5N), MA (S1B,S4N), MD (S2B), ME (S4B), MI (S4), MN (SNRB), MO (S3), MS (S5N), MT (S5B), MT (S5B), NC (S3B,S5N), ND (SNRB), NE (S5), NH (S2B), NH (S2B), NJ (S1B,S3N), NM (S5B,S5N), NV (S4), NY (S3B,S1N), OH (S2S3), OK (S5), OR (S5), PA (S3B,S4N), RI (S1B), SC (SNRB,SNRN), SD (S4B), SD (S4B), TN (S2), TX (S5B), UT (S4B,S3S4N), VA (S1S2B,S3N), VT (S2B,S3N), WA (S4B,S5N), WI (S4B), WI (S4B), WV (S2B,S4N), WY (S5), AB (S4), BC (S4B), LB (SNA), MB (S4S5B), MB (S4S5B), NB (S4B), NF (S1B), NS (S4B), NT (SNRB), ON (S4B,S4N), PE (S5B), QC (S4B), SK (S5B), YT (S3B)

SUMMARY OF PREDICTED HABITAT BY MANAGMENT AND GAP PROTECTION STATUS:

	US FWS		US Forest Service		Tenn. Valley Author.		US DOD/ACOE	
	ha	%	ha	%	ha	%	ha	%
Status 1	45,225.6	3	0.9	< 1	0.0	0	0.0	0
Status 2	29,248.2	2	81.6	< 1	0.0	0	0.0	0
Status 3	710.3	< 1	591.4	< 1	0.0	0	17,654.1	1
Status 4	1.9	< 1	0.0	0	0.0	0	13.2	< 1
Total	75,186.0	5	673.9	< 1	0.0	0	17,667.4	1
	US Dept. of Energy		US Nat. Park Service		NOAA		Other Federal Lands	
	ha	%	ha	%	ha	%	ha	%
Status 1	0.0	0	173,854.2	12	957.2	< 1	4,372.5	< 1
Status 2	0.0	0	22,777.6	2	27,220.3	2	2.7	< 1
Status 3	0.0	0	115,424.0	8	0.0	0	0.0	0
Status 4	0.0	0	0.0	0	0.0	0	0.0	0
Total	0.0	0	312,055.7	22	28,177.6	2	4,375.2	< 1
	Native Am. Reserv.		State Park/Hist. Park		State WMA/Gameland		State Forest	
	ha	%	ha	%	ha	%	ha	%
Status 1	0.0	0	0.0	0	0.0	0	0.0	0
Status 2	0.0	0	36.5	< 1	256,230.9	18	0.0	0
Status 3	0.0	0	57,761.6	4	5,818.0	< 1	7,535.0	< 1
Status 4	0.0	0	0.0	0	244.5	< 1	0.0	0
Total	0.0	0	57,798.0	4	262,293.4	18	7,535.0	< 1
	State Coastal Reserve		ST Nat.Area/Preserve		Other State Lands		Private Cons. Easemt.	
	ha	%	ha	%	ha	%	ha	%
Status 1	0.0	0	0.0	0	0.0	0	0.0	0
Status 2	10,924.9	< 1	17,153.0	1	0.0	0	53.9	< 1
Status 3	0.0	0	899.5	< 1	816.2	< 1	3,158.9	< 1
Status 4	0.0	0	0.0	0	5.4	< 1	0.0	0
Total	10,924.9	< 1	18,052.5	1	821.6	< 1	3,212.8	< 1
	Private Land - No Res.		Water		Overall Total			
	ha	%	ha	%	ha	%	ha	%
Status 1	0.0	0	0.0	0	224,410.4 16			
Status 2	0.0	0	0.0	0	363,729.6 25			
Status 3	0.0	0	0.0	0	210,368.9 15			
Status 4	611,934.8	43	22,976.9	2	635,419.4 44			
Total	611,934.8	43	22,976.9	2	1,433,928.3 100			

GAP Status 1: An area having permanent protection from conversion of natural land cover and a mandated management plan in operation to maintain a natural state within which disturbance events (of natural type, frequency, and intensity) are allowed to proceed without interference or are mimicked through management.

GAP Status 2: An area having permanent protection from conversion of natural land cover and a mandated management plan in operation to maintain a primarily natural state, but which may receive use or management practices that degrade the quality of existing natural communities.

GAP Status 3: An area having permanent protection from conversion of natural land cover for the majority of the area, but subject to extractive uses of either a broad, low-intensity type or localized intense type. It also confers protection to federally listed endangered and threatened species throughout the area.

GAP Status 4: Lack of irrevocable easement or mandate to prevent conversion of natural habitat types to anthropogenic habitat types. Allows for intensive use throughout the tract. Also includes those tracts for which the existence of such restrictions or sufficient information to establish a higher status is unknown.

PREDICTED HABITAT MODEL(S):

Year-round Model:

Habitat Description: Breeds in emergent vegetation along lake, pond, reservoir, marsh, slough, and slow-moving stream and river margins; preferably fresh water but occasionally brackish. Fairly common throughout the region during non-breeding season (wintering). Breeds mostly in the coastal plain and very erratically in the Piedmont and mountains. Forages on aquatic vegetation and insects, fish, crustaceans, etc. by diving in open waters, along the shore among emergent plants, and under mats of floating vegetation (Hamel 1992, Muller and Storer 1999). M. Rubino, 5nov04.

Hydrography Mask:

Utilizes flowing water features with buffers of 250m from and 4000m into selected water features.

Utilizes open water features with buffers of 250m from and 4000m into selected water features.

Utilizes wet vegetation features with buffers of 250m from and 4000m into selected vegetation features.

Selected Map Units:

Functional Group	Map Unit Name
Brackish Tidal Marsh & Wetland	Atlantic Coastal Plain Central Salt and Brackish Tidal Marsh
Brackish Tidal Marsh & Wetland	Atlantic Coastal Plain Embayed Region Tidal Salt and Brackish Marsh
Brackish Tidal Marsh & Wetland	Atlantic Coastal Plain Indian River Lagoon Tidal Marsh
Brackish Tidal Marsh & Wetland	Atlantic Coastal Plain Northern Tidal Salt Marsh
Brackish Tidal Marsh & Wetland	Florida Big Bend Salt-Brackish Tidal Marsh
Brackish Tidal Marsh & Wetland	South Florida Everglades Sawgrass Marsh
Freshwater Tidal Marsh & Wetland	Atlantic Coastal Plain Central Fresh-Oligohaline Tidal Marsh
Freshwater Tidal Marsh & Wetland	Atlantic Coastal Plain Embayed Region Tidal Freshwater Marsh
Freshwater Tidal Marsh & Wetland	Atlantic Coastal Plain Northern Fresh and Oligohaline Tidal Marsh
Freshwater Tidal Marsh & Wetland	Florida Big Bend Fresh-Oligohaline Tidal Marsh
Water	Open Water (Brackish/Salt)
Water	Open Water (Fresh)
Wetlands	Atlantic Coastal Plain Blackwater Stream Floodplain Forest - Herbaceous Modifier
Wetlands	Atlantic Coastal Plain Clay-Based Carolina Bay Herbaceous Wetland
Wetlands	Atlantic Coastal Plain Depression Pondshore
Wetlands	Atlantic Coastal Plain Large Natural Lakeshore
Wetlands	Atlantic Coastal Plain Northern Pondshore
Wetlands	Central Appalachian Floodplain - Herbaceous Modifier
Wetlands	Central Appalachian Riparian - Herbaceous Modifier
Wetlands	Central Florida Herbaceous Pondshore
Wetlands	East Gulf Coastal Plain Large River Floodplain Forest - Herbaceous Modifier
Wetlands	East Gulf Coastal Plain Northern Depression Pondshore
Wetlands	East Gulf Coastal Plain Southern Depression Pondshore
Wetlands	Lower Mississippi River Bottomland Depressions - Herbaceous Modifier
Wetlands	South-Central Interior Large Floodplain - Herbaceous Modifier
Wetlands	Southern Coastal Plain Spring-run Stream Aquatic Vegetation
Wetlands	Southern Piedmont Large Floodplain Forest - Herbaceous Modifier
Wetlands	Unconsolidated Shore (Lake/River/Pond)

CITATIONS: American Ornithologists' Union (AOU), Committee on Classification and Nomenclature. 1983. Check-list of North American Birds. Sixth Edition. American Ornithologists' Union, Allen Press, Inc., Lawrence, Kansas.

Andrle, R.F., and J.R. Carroll. 1988. The atlas of breeding birds in New York State. Cornell Univ., Ithaca, New York. 551 pp.

Chabreck, R. H. 1963. Breeding habits of the pied-billed grebe in an impounded coastal marsh in Louisiana. Auk 80:447-52.

Faaborg, J. 1976. Habitat selection and territorial behavior of the small grebes of North Dakota. Wilson Bulletin 88:390-399.

Forbes, M. R. L., H. P. Barkhouse, and P. C. Smith. 1989. Nest-site selection by pied-billed grebes *PODILYMBUS PODICEPS*. Ornis Scandinavia 20:211-8.

- Fredrickson, L.H., and F.A. Reid. 1986. Wetlands and riparian habitats: a nongame management overview. Pages 59-96 in J.B. Hale, L.B. Best, and R. L. Clawson, (eds.) Management of nongame wildlife in the Midwest: a developing art. Proc. Symp. 47th Midwest F
- Fussell, J. III and M. Lyons. 1990. Birds of the Outer Banks [pamphlet]. Eastern National Parks and Monument Association Coastal Wildlife Refuge Society.
- Fussell, J.O. III. 1994. A birder's guide to coastal North Carolina. Chapel Hill and London: The University of North Carolina Press.
- Gibbs, J.P., and S.M. Melvin. 1992. Pied-billed grebe, *PODILYMBUS PODICEPS*. Pages 31-49 in K.J. Schneider and D.M. Pence, editors. Migratory nongame birds of management concern in the Northeast. U.S. Fish and Wildlife Service, Newton Corner, Massachusetts
- Glover, F. A. 1953. Nesting ecology of the pied-billed grebe in northwestern Iowa. *Wilson Bulletin* 65:32-9.
- Hamel, P. B. 1992. The land manager's guide to the birds of the south. The Nature Conservancy, Chapel Hill, North Carolina. 367 pp + several appendices.
- Harrison, H.H. 1979. A field guide to western birds' nests. Houghton Mifflin Company, Boston. 279 pp.
- Herkert, J. R., editor. 1992. Endangered and threatened species of Illinois: status and distribution. Vol. 2: Animals. Illinois Endangered Species Protection Board. iv + 142 pp.
- Johnsgard, P. A. 1987. Diving birds of North America. Univ. Nebraska Press, Lincoln. xii + 292 pp.
- Kaufman K. 1996. Lives of North American Birds. Boston, New York: Houghton Mifflin Company.
- Muller, M.J. and R.W. Storer. 1999. Pied-billed grebe (*Podilymbus podiceps*). In A. Poole and F. Gill, eds., *The Birds of North America*, No. 410. The Academy of Natural Sciences, Philadelphia and The American Ornithologists' Union, Washington, DC.
- Nudds, T. D. 1982. Ecological separation of grebes and coots: interference competition or microhabitat selection? *Wilson Bulletin* 94:505-514.
- Palmer, R. S. (editor). 1962. Handbook of North American birds. Vol. 1. Loons through flamingos. Yale University Press, New Haven. 567 pp.
- Root, T. 1988. Atlas of wintering North American birds: An analysis of Christmas Bird Count data. University of Chicago Press. 336 pp.
- Sealy, S. G. 1978. Clutch size and nest placement of the pied-billed grebe in Manitoba. *Wilson Bulletin* 90:301-2.
- Simpson MB Jr. 1992. Birds of the Blue Ridge Mountains. Chapel Hill and London: University of North Carolina Press.
- Stewart, R.E. 1975. Breeding birds of North Dakota. Tri-College Center for Environmental Studies, Fargo ND. 295 pp.
- Stiles, F.G., and A.F. Skutch. 1989. A guide to the birds of Costa Rica. Comstock Publ. Associates, Cornell University Press, Ithaca, New York. 511 pp.
- Terres, J.K. 1980. The Audubon Society encyclopedia of North American birds. Alfred A. Knopf, New York.
- U.S. Fish and Wildlife Service (USFWS). 1987. Migratory nongame birds of management concern in the United States: The 1987 list. Office of Migratory Bird Management, U.S. Fish and Wildlife Service, Washington, DC. 25 pp.
- U.S. Fish and Wildlife Service (USFWS). 1995. Migratory nongame birds of management concern in the United States: The 1995 list. Office of Migratory Bird Management, U.S. Fish and Wildlife Service, Washington, DC. 22 pp.

For more information:: SE-GAP Analysis Project / BaSIC
 127 David Clark Labs
 Dept. of Biology, NCSU
 Raleigh, NC 27695-7617
 (919) 513-2853
www.basic.ncsu.edu/segap

Compiled: 15 September 2011

This data was compiled and/or developed by the Southeast GAP Analysis Project at The Biodiversity and Spatial Information Center, North Carolina State University.