



# SOUTHEAST GAP ANALYSIS PROJECT



## Species Modeling Report

### Purple Martin

*Progne subis*

Taxa: Avian

Order: Passeriformes

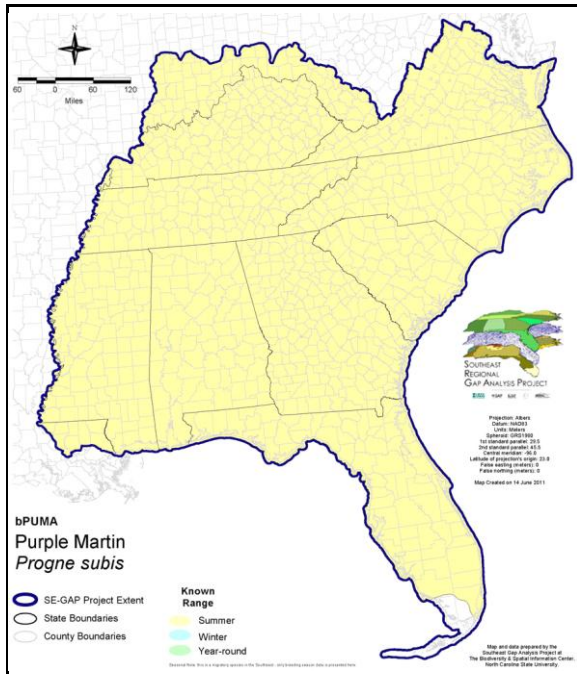
Family: Hirundinidae

SE-GAP Spp Code: **bPUMA**

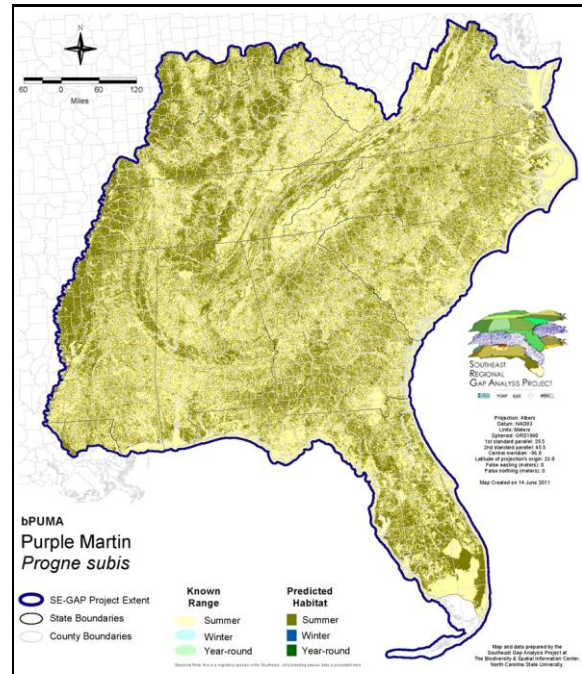
ITIS Species Code: 178464

NatureServe Element Code: ABPAU01010

#### KNOWN RANGE:



#### PREDICTED HABITAT:



Range Map Link: [http://www.basic.ncsu.edu/segap/datazip/maps/SE\\_Range\\_bPUMA.pdf](http://www.basic.ncsu.edu/segap/datazip/maps/SE_Range_bPUMA.pdf)

Predicted Habitat Map Link: [http://www.basic.ncsu.edu/segap/datazip/maps/SE\\_Dist\\_bPUMA.pdf](http://www.basic.ncsu.edu/segap/datazip/maps/SE_Dist_bPUMA.pdf)

GAP Online Tool Link: <http://www.gapservice.ncsu.edu/segap/segap/index2.php?species=bPUMA>

Data Download: [http://www.basic.ncsu.edu/segap/datazip/region/vert/bPUMA\\_se00.zip](http://www.basic.ncsu.edu/segap/datazip/region/vert/bPUMA_se00.zip)

#### PROTECTION STATUS:

Reported on March 14, 2011

Federal Status: ---

State Status: CA (None), CT (T), CT (T), ID (P), ID (P), KY (N), MA (- WL), ME (SC), NH (SC), NJ (D/S), NV (YES), NY (PB), OR (SC), RI (Not Listed), UT (None), WA (C), WA (C), WI (SC/M), WI (SC/M), BC (2 (2005)), QC (Non suivie)

NS Global Rank: G5

NS State Rank: AK (SNA), AL (S5B), AR (S4B,S4N), AZ (S4), CA (S3), CO (S3B), CO (S3B), CT (S1B), CT (S1B), DC (S1B,S5N), DE (S5B), FL (SNRB), GA (S5), IA (S5B,S5N), ID (S1?B), ID (S1?B), IL (S5), IN (S4B), KS (S4B), KY (S5B), LA (S5B), MA (S1B), MD (S5B), ME (S3B), MI (S5), MN (SNRB), MO (SNRB), MS (S5B), MS (S5B), MT (SNA), NC (S5B), NC (S5B), ND (SNRB), NE (S4), NH (S1B), NJ (S4B), NM (S3B,S4N), NV (SNA), NY (S5), OH (S5), OK (S5B), OR (S2B), PA (S4B), RI (S3B), SC (SNRB), SD (S5B), SD (S5B), TN (S5), TX (S5B), UT (S2S3B), VA (S5), VT (S3S4B), VT (S3S4B), WA (S3B), WA (S3B), WI (S4S5B), WI (S4S5B), WV (S4B), WY (SHB), WY (SHB), AB (S3S4), BC (S2S3B), MB (S3S4B), MB (S3S4B), NB (S3B), NF (SNA), NS (S1B), ON (S4B), PE (SNA), QC (S4B), SK (S5B,S5M), YT (SNA)

**SUMMARY OF PREDICTED HABITAT BY MANAGMENT AND GAP PROTECTION STATUS:**

	US FWS		US Forest Service		Tenn. Valley Author.		US DOD/ACOE	
	ha	%	ha	%	ha	%	ha	%
Status 1	10,622.1	< 1	455.9	< 1	0.0	0	0.0	0
Status 2	48,233.3	< 1	10,537.2	< 1	0.0	0	758.7	< 1
Status 3	339.4	< 1	159,271.2	< 1	29,598.2	< 1	249,624.8	< 1
Status 4	25.1	< 1	0.0	0	0.0	0	464.5	< 1
Total	59,219.9	< 1	170,264.3	< 1	29,598.2	< 1	250,848.0	< 1
	US Dept. of Energy		US Nat. Park Service		NOAA		Other Federal Lands	
	ha	%	ha	%	ha	%	ha	%
Status 1	0.0	0	4,997.9	< 1	0.6	< 1	154.0	< 1
Status 2	0.0	0	2,399.1	< 1	3,411.4	< 1	35.3	< 1
Status 3	5,985.5	< 1	29,909.8	< 1	0.0	0	4,463.0	< 1
Status 4	0.0	0	0.0	0	0.0	0	0.0	0
Total	5,985.5	< 1	37,306.8	< 1	3,412.0	< 1	4,652.3	< 1
	Native Am. Reserv.		State Park/Hist. Park		State WMA/Gameland		State Forest	
	ha	%	ha	%	ha	%	ha	%
Status 1	0.0	0	147.1	< 1	9.4	< 1	0.0	0
Status 2	0.0	0	1,034.8	< 1	148,414.1	< 1	51.5	< 1
Status 3	4,105.5	< 1	189,165.1	< 1	34,832.7	< 1	73,841.9	< 1
Status 4	0.0	0	0.0	0	22,644.7	< 1	4.3	< 1
Total	4,105.5	< 1	190,346.9	< 1	205,900.8	< 1	73,897.7	< 1
	State Coastal Reserve		ST Nat.Area/Preserve		Other State Lands		Private Cons. Easemt.	
	ha	%	ha	%	ha	%	ha	%
Status 1	0.0	0	957.5	< 1	0.0	0	0.0	0
Status 2	1,420.5	< 1	6,606.8	< 1	1.4	< 1	1,165.9	< 1
Status 3	0.0	0	6,128.5	< 1	17,847.6	< 1	70,381.0	< 1
Status 4	0.0	0	0.0	0	2,389.3	< 1	< 0.1	< 1
Total	1,420.5	< 1	13,692.8	< 1	20,238.4	< 1	71,546.9	< 1
	Private Land - No Res.		Water		Overall Total			
	ha	%	ha	%	ha	%		
Status 1	0.0	0	0.0	0	17,344.4	< 1		
Status 2	0.0	0	0.0	0	224,069.9	< 1		
Status 3	297.3	< 1	< 0.1	< 1	875,791.4	2		
Status 4	40,618,439.3	97	24,555.2	< 1	40,691,142.1	97		
Total	40,618,736.6	97	24,555.2	< 1	41,808,347.9	100		

GAP Status 1: An area having permanent protection from conversion of natural land cover and a mandated management plan in operation to maintain a natural state within which disturbance events (of natural type, frequency, and intensity) are allowed to proceed without interference or are mimicked through management.

GAP Status 2: An area having permanent protection from conversion of natural land cover and a mandated management plan in operation to maintain a primarily natural state, but which may receive use or management practices that degrade the quality of existing natural communities.

GAP Status 3: An area having permanent protection from conversion of natural land cover for the majority of the area, but subject to extractive uses of either a broad, low-intensity type or localized intense type. It also confers protection to federally listed endangered and threatened species throughout the area.

GAP Status 4: Lack of irrevocable easement or mandate to prevent conversion of natural habitat types to anthropogenic habitat types. Allows for intensive use throughout the tract. Also includes those tracts for which the existence of such restrictions or sufficient information to establish a higher status is unknown.

## PREDICTED HABITAT MODEL(S):

### Summer Model:

Habitat Description: Nests exclusively in human made birdhouses near human settlements. Appear to avoid higher elevations of the Appalachians. Forages over ag fields and pasture and open water. M. Rubino, 06jan05.

Elevation Mask: < 1500m

Hydrography Mask:

Freshwater Only

Utilizes open water features with buffers of unlimited from and 60m into selected water features.

Utilizes wet vegetation features with buffer of unlimited into selected vegetation features.

### Selected Map Units:

Functional Group	Map Unit Name
Anthropogenic	Bare Sand
Anthropogenic	Bare Soil
Anthropogenic	Developed Open Space
Anthropogenic	High Intensity Developed
Anthropogenic	Low Intensity Developed
Anthropogenic	Medium Intensity Developed
Anthropogenic	Pasture/Hay
Anthropogenic	Row Crop
Anthropogenic	Successional Grassland/Herbaceous
Anthropogenic	Successional Grassland/Herbaceous (Other)
Anthropogenic	Successional Grassland/Herbaceous (Utility Swath)
Anthropogenic	Successional Shrub/Scrub (Clear Cut)
Anthropogenic	Successional Shrub/Scrub (Other)
Anthropogenic	Successional Shrub/Scrub (Utility Swath)
Coastal Dune & Freshwater Wetland	Atlantic and Gulf Coastal Plain Interdunal Wetland
Coastal Dune & Freshwater Wetland	Atlantic Coastal Plain Northern Dune and Maritime Grassland
Coastal Dune & Freshwater Wetland	Atlantic Coastal Plain Southern Dune and Maritime Grassland
Coastal Dune & Freshwater Wetland	East Gulf Coastal Plain Dune and Coastal Grassland
Coastal Dune & Freshwater Wetland	Southwest Florida Dune and Coastal Grassland
Forest/Woodland	East Gulf Coastal Plain Black Belt Calcareous Prairie and Woodland - Woodland Modifier
Freshwater Tidal Marsh & Wetland	Atlantic Coastal Plain Central Fresh-Oligohaline Tidal Marsh
Freshwater Tidal Marsh & Wetland	Atlantic Coastal Plain Embayed Region Tidal Freshwater Marsh
Freshwater Tidal Marsh & Wetland	Atlantic Coastal Plain Northern Fresh and Oligohaline Tidal Marsh
Freshwater Tidal Marsh & Wetland	Florida Big Bend Fresh-Oligohaline Tidal Marsh
Prairie	Bluegrass Basin Savanna and Woodland
Prairie	East Gulf Coastal Plain Black Belt Calcareous Prairie and Woodland
Prairie	East Gulf Coastal Plain Black Belt Calcareous Prairie and Woodland - Herbaceous Modifier
Prairie	East Gulf Coastal Plain Jackson Plain Prairie and Barrens
Prairie	East Gulf Coastal Plain Jackson Prairie and Woodland
Prairie	Eastern Highland Rim Prairie and Barrens
Prairie	Eastern Highland Rim Prairie and Barrens - Dry Modifier
Prairie	Florida Dry Prairie
Prairie	Panhandle Florida Limestone Glade
Prairie	Pennyroyal Karst Plain Prairie and Barrens
Prairie	Southern Ridge and Valley Patch Prairie
Prairie	Western Highland Rim Prairie and Barrens
Water	Open Water (Fresh)
Wetlands	Atlantic Coastal Plain Depression Pondshore
Wetlands	Atlantic Coastal Plain Large Natural Lakeshore
Wetlands	Atlantic Coastal Plain Northern Pondshore
Wetlands	Central Florida Herbaceous Pondshore
Wetlands	East Gulf Coastal Plain Northern Depression Pondshore

Wetlands	East Gulf Coastal Plain Southern Depression Pondshore
Wetlands	Southern Coastal Plain Spring-run Stream Aquatic Vegetation
Wetlands	Unconsolidated Shore (Lake/River/Pond)

- CITATIONS:** Allen, R.P. and M.M. Nice. 1952. A study of the breeding biology of the purple martin (PROGNE SUBIS). Amer. Midland- Nat. 47(3):606-65.
- American Ornithologists' Union (AOU), Committee on Classification and Nomenclature. 1983. Check-list of North American Birds. Sixth Edition. American Ornithologists' Union, Allen Press, Inc., Lawrence, Kansas.
- Bowditch, J. 1990. A way to stop crow and owl predation at purple martin houses. Purple Martin Update 2(3):8-9.
- Brown, C.R. 1997. Purple martin (*Progne subis*). In A. Poole and F. Gill, eds., *The Birds of North America*, No. 287. The Academy of Natural Sciences, Philadelphia and The American Ornithologists' Union, Washington, DC.
- Ehrlich, P.R., D.S. Dobkin, and D. Wheye. 1988. *The birder's handbook: a field guide to the natural history of North American birds*. Simon and Shuster, Inc., New York. xxx + 785 pp.
- Ehrlich, P.R., D.S. Dobkin, and D. Wheye. 1992. *Birds in jeopardy: the imperiled and extinct birds of the United States and Canada, including Hawaii and Puerto Rico*. Stanford University Press, Stanford, California. 259 pp.
- Ginaven, J. 1990. Using decoys to attract purple martins. Purple Martin Update 2(3):26-27.
- Godfrey, W.E. 1966. *The birds of Canada*. National Museums of Canada. Ottawa. 428 pp.
- Hagan, J.M., III, and D.W. Johnston, editors. 1992. *Ecology and conservation of neotropical migrant landbirds*. Smithsonian Institution Press, Washington, D.C. xiii + 609 pp.
- Harrison, C. 1978. *A field guide to the nests, eggs and nestlings of North American birds*. Collins, Cleveland, Ohio.
- Hilty, S.L., and W.L. Brown. 1986. *A guide to the birds of Colombia*. Princeton University Press, Princeton, New Jersey. 836 pp.
- Kaufman K. 1996. *Lives of North American Birds*. Boston, New York: Houghton Mifflin Company.
- Layton, R. B. 1969. *The purple martin*. Nature Books. 192 pp.
- Mitchell, W.A. 1988. Songbird nest boxes. Section 5.1.8, U.S. Army Corps of Engineers, Wildlife Resources Management Manual. Tech. Rep. EL-88-19. Waterways Experiment Station, Vicksburg, Mississippi. 48 pp.
- Morton, E. S., and K. C. Derrickson. 1990. The biological significance of age-specific return schedules in breeding purple martins. *Condor* 92:1040-1050.
- National Geographic Society (NGS). 1983. *Field guide to the birds of North America*. National Geographic Society, Washington, D.C.
- Nicholson CP. 1997. *Atlas of the breeding birds of Tennessee*. Knoxville: University of Tennessee Press.
- Oberholser, H.C. 1974. *The bird life of Texas*. 2 vols. Univ. of Texas Press, Austin.
- Potter, E. F., J. F. Parnell, and R. P. Teulings. 1980. *Birds of the Carolinas*. Univ. North Carolina Press, Chapel Hill. 408 pp.
- Ridgely, R.S., and G. Tudor. 1989. *The birds of South America*. Vol. 1. The Oscine passerines. Univ. Texas Press, Austin. 516 pp.
- Sauer, J.R., and S. Droege. 1992. Geographical patterns in population trends of neotropical migrants in North America. Pages 26-42 in J.M. Hagan III and D.W. Johnston, editors. *Ecology and conservation of neotropical migrant landbirds*. Smithsonian Institution
- Sheldon, F. H., and D. W. Winkler. 1993. Intergeneric phylogenetic relationships of swallows estimated by DNA-DNA hybridization. *Auk* 110:798-824.
- Stiles, F.G., and A.F. Skutch. 1989. *A guide to the birds of Costa Rica*. Comstock Publ. Associates, Cornell University Press, Ithaca, New York. 511 pp.
- Stutchbury, B. J. 1991. Coloniality and breeding biology of purple martins (*PROGNE SUBIS HESPERIA*) in saguaro cacti. *Condor* 93:666-675.
- Terres, J.K. 1980. *The Audubon Society encyclopedia of North American birds*. Alfred A. Knopf, New York.
- Turner, A., and C. Rose. 1989. *Swallows and martins an identification guide*. Houghton Mifflin Co., Boston.
- Wade, J. 1966. What you should know about the purple martin. 218 pp.

For more information:: SE-GAP Analysis Project / BaSIC  
127 David Clark Labs  
Dept. of Biology, NCSU  
Raleigh, NC 27695-7617  
(919) 513-2853  
[www.basic.ncsu.edu/segap](http://www.basic.ncsu.edu/segap)

Compiled: 15 September 2011

This data was compiled and/or developed  
by the Southeast GAP Analysis Project at  
The Biodiversity and Spatial Information  
Center, North Carolina State University.