



# SOUTHEAST GAP ANALYSIS PROJECT



## Species Modeling Report

### Red-bellied Woodpecker

*Melanerpes carolinus*

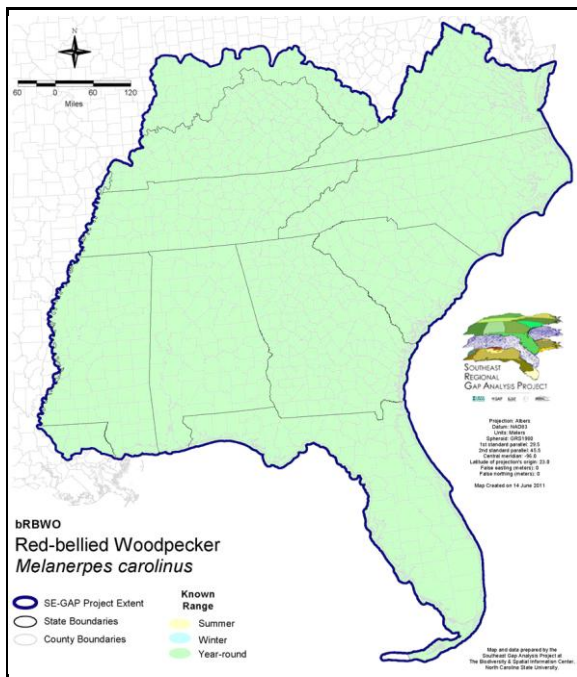
Taxa: Avian  
 Order: Piciformes  
 Family: Picidae

SE-GAP Spp Code: **bRBWO**

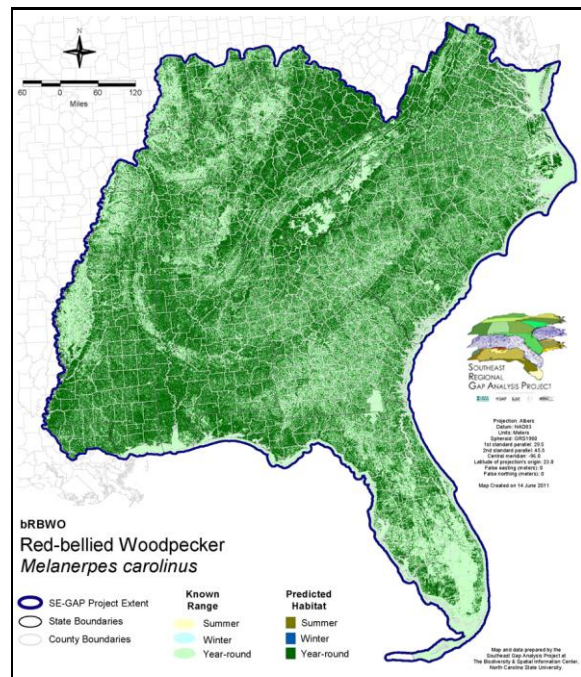
ITIS Species Code: 178195

NatureServe Element Code: ABNYF04170

#### KNOWN RANGE:



#### PREDICTED HABITAT:



Range Map Link: [http://www.basic.ncsu.edu/segap/datazip/maps/SE\\_Range\\_bRBWO.pdf](http://www.basic.ncsu.edu/segap/datazip/maps/SE_Range_bRBWO.pdf)

Predicted Habitat Map Link: [http://www.basic.ncsu.edu/segap/datazip/maps/SE\\_Dist\\_bRBWO.pdf](http://www.basic.ncsu.edu/segap/datazip/maps/SE_Dist_bRBWO.pdf)

GAP Online Tool Link: <http://www.gapservice.ncsu.edu/segap/segap/index2.php?species=bRBWO>

Data Download: [http://www.basic.ncsu.edu/segap/datazip/region/vert/bRBWO\\_se00.zip](http://www.basic.ncsu.edu/segap/datazip/region/vert/bRBWO_se00.zip)

#### PROTECTION STATUS:

Reported on March 14, 2011

Federal Status: ---

State Status: KY (N), NJ (INC/S), NY (PB), RI (Not Listed), QC (Non suivie)

NS Global Rank: G5

NS State Rank: AL (S5), AR (S5), CO (S4), CT (S4), DC (S5), DE (S5), FL (SNR), GA (S5), IA (S5B), IL (S5), IN (S4), KS (S5), KY (S5), LA (S5), MA (S4), MD (S5), ME (SNA), MI (S5), MN (SNR), MO (SNR), MS (S5), MT (SNA), NC (S5), ND (SU), NE (S4), NH (S2), NJ (S4B,S4N), NM (SNA), NY (S5), OH (S5), OK (S5), PA (S5), RI (S2B,S2N), SC (SNR), SD (S4), TN (S5), TX (S5B), VA (S5), VT (SNA), WI (S5B), WI (S5B), WV (S5B,S5N), MB (SNA), MB (SNA), NB (SNA), NF (SNA), NS (SNA), ON (S4), PE (SNA), QC (S4B), SK (SNA)

**SUMMARY OF PREDICTED HABITAT BY MANAGMENT AND GAP PROTECTION STATUS:**

	US FWS		US Forest Service		Tenn. Valley Author.		US DOD/ACOE	
	ha	%	ha	%	ha	%	ha	%
Status 1	113,048.9	< 1	26,948.0	< 1	0.0	0	0.0	0
Status 2	227,479.4	< 1	323,046.5	< 1	0.0	0	4,875.8	< 1
Status 3	3,708.4	< 1	2,412,449.3	4	61,956.5	< 1	692,378.6	1
Status 4	80.9	< 1	< 0.1	< 1	0.0	0	216.8	< 1
Total	344,317.6	< 1	2,762,443.8	4	61,956.5	< 1	697,471.1	1
	US Dept. of Energy		US Nat. Park Service		NOAA		Other Federal Lands	
	ha	%	ha	%	ha	%	ha	%
Status 1	0.0	0	201,409.8	< 1	26.3	< 1	7,581.5	< 1
Status 2	0.0	0	17,076.4	< 1	5,960.3	< 1	67.2	< 1
Status 3	66,661.7	< 1	274,514.0	< 1	0.0	0	5,127.8	< 1
Status 4	0.0	0	0.0	0	0.0	0	0.0	0
Total	66,661.7	< 1	493,000.2	< 1	5,986.6	< 1	12,776.6	< 1
	Native Am. Reserv.		State Park/Hist. Park		State WMA/Gameland		State Forest	
	ha	%	ha	%	ha	%	ha	%
Status 1	0.0	0	1,651.1	< 1	72.9	< 1	0.0	0
Status 2	0.0	0	19,033.7	< 1	731,084.3	1	1,443.6	< 1
Status 3	17,167.3	< 1	553,912.3	< 1	242,340.9	< 1	352,348.2	< 1
Status 4	0.0	0	< 0.1	< 1	110,477.1	< 1	48.8	< 1
Total	17,167.3	< 1	574,597.1	< 1	1,083,975.2	2	353,840.6	< 1
	State Coastal Reserve		ST Nat.Area/Preserve		Other State Lands		Private Cons. Easemt.	
	ha	%	ha	%	ha	%	ha	%
Status 1	0.0	0	15,691.4	< 1	0.0	0	0.0	0
Status 2	12,628.2	< 1	94,675.3	< 1	5.0	< 1	3,412.4	< 1
Status 3	0.0	0	23,362.4	< 1	23,359.4	< 1	103,718.3	< 1
Status 4	0.0	0	2.1	< 1	2,888.9	< 1	0.0	0
Total	12,628.2	< 1	133,731.2	< 1	26,253.4	< 1	107,130.7	< 1
	Private Land - No Res.		Water		Overall Total			
	ha	%	ha	%	ha	%		
Status 1	0.0	0	0.0	0	366,429.9	< 1		
Status 2	0.0	0	0.0	0	1,440,788.1	2		
Status 3	645.1	< 1	1.1	< 1	4,833,651.1	11		
Status 4	55,561,358.8	86	53,378.9	< 1	55,838,848.6	86		
Total	55,562,003.9	86	53,380.0	< 1	62,479,717.7	100		

GAP Status 1: An area having permanent protection from conversion of natural land cover and a mandated management plan in operation to maintain a natural state within which disturbance events (of natural type, frequency, and intensity) are allowed to proceed without interference or are mimicked through management.

GAP Status 2: An area having permanent protection from conversion of natural land cover and a mandated management plan in operation to maintain a primarily natural state, but which may receive use or management practices that degrade the quality of existing natural communities.

GAP Status 3: An area having permanent protection from conversion of natural land cover for the majority of the area, but subject to extractive uses of either a broad, low-intensity type or localized intense type. It also confers protection to federally listed endangered and threatened species throughout the area.

GAP Status 4: Lack of irrevocable easement or mandate to prevent conversion of natural habitat types to anthropogenic habitat types. Allows for intensive use throughout the tract. Also includes those tracts for which the existence of such restrictions or sufficient information to establish a higher status is unknown.

## PREDICTED HABITAT MODEL(S):

### Year-round Model:

Habitat Description: Red-bellied woodpeckers breed in all forest types (Nicholson 1997) as well as in open areas such as forest edges, clearings, orchards, shade trees in suburbs (Kaufman 1996), and swamps (Ehrlich et al. 1988). Widespread in woodlands and forests; most common in bottomland hardwoods, but also use upland deciduous, pine forests, and residential woodlands (Hamel 1992). Commonly use the forest edge (Robertson and Kushlan 1984). # Rural and urban areas throughout Florida; river bottomland, pine flatwoods, open deciduous and mixed woodlands, hammocks, and ornamentals in residential areas (Stevenson and Anderson 1994). Red-bellied woodpeckers breed throughout Georgia in deciduous, pine or mixed forest at moderate and low elevations. They prefer open forested areas of mature or second-growth trees, and are common in bottomlands, but may also be found in uplands. Other suitable habitat includes parks or residential areas with mature trees, pecan groves and small woodlots. They are absent from the barrier islands (Fussell and Lyons 1990).

Excavates a nesting cavity from 5 to 120 feet above the ground in a deciduous snag or telephone pole (Ehrlich et al. 1988) or on the underside of a diagonal dead, bark-covered limb of a live tree. Will also enlarge the holes of and nest in birdhouses (Nicholson 1997). Forages by gleaning and caching items (Ehrlich et al. 1988). Nests in hole usually less than 12 m up in live or dead tree, stump, utility pole, wooden building, bird box. Starlings often take over completed holes (NATURE SERVE).

- K. Cook, 17Feb05

Elevation Mask: < 914m

### Selected Map Units:

Functional Group	Map Unit Name
Anthropogenic	Developed Open Space
Anthropogenic	Low Intensity Developed
Anthropogenic	Successional Shrub/Scrub (Clear Cut)
Anthropogenic	Successional Shrub/Scrub (Other)
Anthropogenic	Successional Shrub/Scrub (Utility Swath)
Forest/Woodland	Alabama Ketona Glade and Woodland
Forest/Woodland	Allegheny-Cumberland Dry Oak Forest and Woodland
Forest/Woodland	Allegheny-Cumberland Dry Oak Forest and Woodland - Hardwood Modifier
Forest/Woodland	Allegheny-Cumberland Dry Oak Forest and Woodland - Pine Modifier
Forest/Woodland	Appalachian Hemlock-Hardwood Forest
Forest/Woodland	Appalachian Shale Barrens
Forest/Woodland	Atlantic Coastal Plain Dry and Dry-Mesic Oak Forest
Forest/Woodland	Atlantic Coastal Plain Fall-Line Sandhills Longleaf Pine Woodland - Loblolly Modifier
Forest/Woodland	Atlantic Coastal Plain Fall-line Sandhills Longleaf Pine Woodland - Offsite Hardwood Modifier
Forest/Woodland	Atlantic Coastal Plain Fall-line Sandhills Longleaf Pine Woodland - Open Understory Modifier
Forest/Woodland	Atlantic Coastal Plain Fall-line Sandhills Longleaf Pine Woodland - Scrub/Shrub Understory Modifier
Forest/Woodland	Atlantic Coastal Plain Mesic Hardwood and Mixed Forest
Forest/Woodland	Atlantic Coastal Plain Northern Mixed Oak-Heath Forest
Forest/Woodland	Atlantic Coastal Plain Upland Longleaf Pine Woodland
Forest/Woodland	Central Appalachian Alkaline Glade and Woodland
Forest/Woodland	Central Appalachian Oak and Pine Forest
Forest/Woodland	Central Appalachian Pine-Oak Rocky Woodland
Forest/Woodland	Central Interior Highlands Calcareous Glade and Barrens
Forest/Woodland	Central Interior Highlands Dry Acidic Glade and Barrens
Forest/Woodland	Cumberland Sandstone Glade and Barrens
Forest/Woodland	East Gulf Coastal Plain Interior Shortleaf Pine-Oak Forest - Hardwood Modifier
Forest/Woodland	East Gulf Coastal Plain Interior Shortleaf Pine-Oak Forest - Mixed Modifier
Forest/Woodland	East Gulf Coastal Plain Interior Shortleaf Pine-Oak Forest - Pine Modifier
Forest/Woodland	East Gulf Coastal Plain Interior Upland Longleaf Pine Woodland - Loblolly Modifier
Forest/Woodland	East Gulf Coastal Plain Interior Upland Longleaf Pine Woodland - Offsite Hardwood Modifier

Forest/Woodland	East Gulf Coastal Plain Interior Upland Longleaf Pine Woodland - Open Understory Modifier
Forest/Woodland	East Gulf Coastal Plain Interior Upland Longleaf Pine Woodland - Scrub/Shrub Modifier
Forest/Woodland	East Gulf Coastal Plain Limestone Forest
Forest/Woodland	East Gulf Coastal Plain Northern Dry Upland Hardwood Forest
Forest/Woodland	East Gulf Coastal Plain Northern Loess Bluff Forest
Forest/Woodland	East Gulf Coastal Plain Northern Loess Plain Oak-Hickory Upland - Hardwood Modifier
Forest/Woodland	East Gulf Coastal Plain Northern Loess Plain Oak-Hickory Upland - Juniper Modifier
Forest/Woodland	East Gulf Coastal Plain Northern Mesic Hardwood Forest
Forest/Woodland	East Gulf Coastal Plain Southern Loess Bluff Forest
Forest/Woodland	East Gulf Coastal Plain Southern Mesic Slope Forest
Forest/Woodland	Florida Longleaf Pine Sandhill - Open Understory Modifier
Forest/Woodland	Florida Longleaf Pine Sandhill - Scrub/Shrub Understory Modifier
Forest/Woodland	Nashville Basin Limestone Glade
Forest/Woodland	Northeastern Interior Dry Oak Forest - Mixed Modifier
Forest/Woodland	Northeastern Interior Dry Oak Forest - Virginia/Pitch Pine Modifier
Forest/Woodland	Northeastern Interior Dry Oak Forest-Hardwood Modifier
Forest/Woodland	Northern Atlantic Coastal Plain Dry Hardwood Forest
Forest/Woodland	Ridge and Valley Calcareous Valley Bottom Glade and Woodland
Forest/Woodland	South Florida Pine Rockland
Forest/Woodland	South-Central Interior Mesophytic Forest
Forest/Woodland	Southeastern Interior Longleaf Pine Woodland
Forest/Woodland	Southern and Central Appalachian Cove Forest
Forest/Woodland	Southern and Central Appalachian Mafic Glade and Barrens
Forest/Woodland	Southern and Central Appalachian Oak Forest
Forest/Woodland	Southern and Central Appalachian Oak Forest - Xeric
Forest/Woodland	Southern Appalachian Low Mountain Pine Forest
Forest/Woodland	Southern Appalachian Montane Pine Forest and Woodland
Forest/Woodland	Southern Coastal Plain Dry Upland Hardwood Forest
Forest/Woodland	Southern Coastal Plain Oak Dome and Hammock
Forest/Woodland	Southern Interior Low Plateau Dry-Mesic Oak Forest
Forest/Woodland	Southern Interior Low Plateau Dry-Mesic Oak Forest - Evergreen Modifier
Forest/Woodland	Southern Piedmont Dry Oak-(Pine) Forest - Hardwood Modifier
Forest/Woodland	Southern Piedmont Dry Oak-(Pine) Forest - Loblolly Pine Modifier
Forest/Woodland	Southern Piedmont Dry Oak-(Pine) Forest - Mixed Modifier
Forest/Woodland	Southern Piedmont Dry Oak-Heath Forest - Hardwood Modifier
Forest/Woodland	Southern Piedmont Dry Oak-Heath Forest - Mixed Modifier
Forest/Woodland	Southern Piedmont Dry Oak-Heath Forest - Virginia/Pitch Pine Modifier
Forest/Woodland	Southern Piedmont Glade and Barrens
Forest/Woodland	Southern Piedmont Mafic Hardpan Woodland
Forest/Woodland	Southern Piedmont Mesic Forest
Forest/Woodland	Southern Piedmont Northern Triassic Basin Dry Forest
Forest/Woodland	Southern Ridge and Valley Dry Calcareous Forest
Forest/Woodland	Southern Ridge and Valley Dry Calcareous Forest - Hardwood Modifier
Forest/Woodland	Southern Ridge and Valley Dry Calcareous Forest - Pine Modifier
Wetlands	Atlantic Coastal Plain Blackwater Stream Floodplain Forest - Forest Modifier
Wetlands	Atlantic Coastal Plain Brownwater Stream Floodplain Forest
Wetlands	Atlantic Coastal Plain Clay-Based Carolina Bay Forested Wetland
Wetlands	Atlantic Coastal Plain Nonriverine Swamp and Wet Hardwood Forest - Taxodium/Nyssa Modifier
Wetlands	Atlantic Coastal Plain Nonriverine Swamp and Wet Hardwood Forest - Oak Dominated Modifier
Wetlands	Atlantic Coastal Plain Northern Basin Peat Swamp
Wetlands	Atlantic Coastal Plain Northern Basin Swamp and Wet Hardwood Forest
Wetlands	Atlantic Coastal Plain Northern Wet Longleaf Pine Savanna and Flatwoods
Wetlands	Atlantic Coastal Plain Peatland Pocosin
Wetlands	Atlantic Coastal Plain Small Blackwater River Floodplain Forest
Wetlands	Atlantic Coastal Plain Small Brownwater River Floodplain Forest
Wetlands	Atlantic Coastal Plain Southern Wet Pine Savanna and Flatwoods

Wetlands	Atlantic Coastal Plain Streamhead Seepage Swamp, Pocosin, and Baygall
Wetlands	Central Appalachian Floodplain - Forest Modifier
Wetlands	Central Appalachian Riparian - Forest Modifier
Wetlands	Central Florida Pine Flatwoods
Wetlands	East Gulf Coastal Plain Jackson Plain Dry Flatwoods - Open Understory Modifier
Wetlands	East Gulf Coastal Plain Jackson Plain Dry Flatwoods - Scrub/Shrub Understory Modifier
Wetlands	East Gulf Coastal Plain Large River Floodplain Forest - Forest Modifier
Wetlands	East Gulf Coastal Plain Near-Coast Pine Flatwoods - Offsite Hardwood Modifier
Wetlands	East Gulf Coastal Plain Near-Coast Pine Flatwoods - Open Understory Modifier
Wetlands	East Gulf Coastal Plain Near-Coast Pine Flatwoods - Scrub/Shrub Understory Modifier
Wetlands	East Gulf Coastal Plain Northern Seepage Swamp
Wetlands	East Gulf Coastal Plain Small Stream and River Floodplain Forest
Wetlands	East Gulf Coastal Plain Southern Loblolly-Hardwood Flatwoods
Wetlands	Lower Mississippi River Bottomland and Floodplain Forest
Wetlands	Lower Mississippi River Bottomland Depressions - Forest Modifier
Wetlands	Mississippi River Low Floodplain (Bottomland) Forest
Wetlands	Mississippi River Riparian Forest
Wetlands	North-Central Appalachian Acidic Swamp
Wetlands	North-Central Interior and Appalachian Rich Swamp
Wetlands	South Florida Bayhead Swamp
Wetlands	South Florida Cypress Dome
Wetlands	South Florida Dwarf Cypress Savanna
Wetlands	South Florida Hardwood Hammock
Wetlands	South Florida Pine Flatwoods
Wetlands	South Florida Willow Head
Wetlands	South-Central Interior Large Floodplain - Forest Modifier
Wetlands	South-Central Interior Small Stream and Riparian
Wetlands	South-Central Interior/Upper Coastal Plain Wet Flatwoods
Wetlands	Southern Coastal Plain Blackwater River Floodplain Forest
Wetlands	Southern Coastal Plain Hydric Hammock
Wetlands	Southern Coastal Plain Nonriverine Basin Swamp
Wetlands	Southern Coastal Plain Nonriverine Cypress Dome
Wetlands	Southern Coastal Plain Seepage Swamp and Baygall
Wetlands	Southern Piedmont Large Floodplain Forest - Forest Modifier
Wetlands	Southern Piedmont Seepage Wetland
Wetlands	Southern Piedmont Small Floodplain and Riparian Forest
Wetlands	Southern Piedmont/Ridge and Valley Upland Depression Swamp

- CITATIONS:** American Ornithologists' Union (AOU), Committee on Classification and Nomenclature. 1983. Check-list of North American Birds. Sixth Edition. American Ornithologists' Union, Allen Press, Inc., Lawrence, Kansas.
- Bent, A.C. 1939. Life histories of North American woodpeckers, U.S. Nat'l. Mus. Bull. 174. Washington, D.C.
- Dixon, K.L. 1989. Contact zones of avian congeners on the southern Great Plains. *Condor* 91:15-22.
- Ehrlich, P.R., D.S. Dobkin, and D. Wheye. 1988. *The birder's handbook: a field guide to the natural history of North American birds*. Simon and Shuster, Inc., New York. xxx + 785 pp.
- Fussell, J. III and M. Lyons. 1990. *Birds of the Outer Banks* [pamphlet]. Eastern National Parks and Monument Association Coastal Wildlife Refuge Society.
- Hamel, P. B. 1992. *The land manager's guide to the birds of the south*. The Nature Conservancy, Chapel Hill, North Carolina. 367 pp + several appendices.
- Harrison, C. 1978. *A field guide to the nests, eggs and nestlings of North American birds*. Collins, Cleveland, Ohio.
- Harrison, H.H. 1979. *A field guide to western birds' nests*. Houghton Mifflin Company, Boston. 279 pp.
- Ingold, D. J. 1989. Nesting phenology and competition for nest sites among red-headed and red-bellied woodpeckers and European starlings. *Auk* 106:209-217.
- Ingold, D. J. 1994. Influence of nest-site competition between European starlings and woodpeckers. *Wilson Bull.* 106:227-241.

Kaufman K. 1996. Lives of North American Birds. Boston, New York: Houghton Mifflin Company.

Kilham, L. 1983. Life history studies of woodpeckers of eastern North America. Nuttall Ornithol. Club Pub. No. 20. vii + 240 pp.

National Geographic Society (NGS). 1983. Field guide to the birds of North America. National Geographic Society, Washington, D.C.

Nicholson CP. 1997. Atlas of the breeding birds of Tennessee. Knoxville: University of Tennessee Press.

Potter, E. F., J. F. Parnell, and R. P. Teulings. 1980. Birds of the Carolinas. Univ. North Carolina Press, Chapel Hill. 408 pp.

Robertson, W. B. Jr. and J. A. Kushlan. 1984. The Southern Florida Avifauna. Environments of South Florida Present and Past II. P. J. Gleason ed. Coral Gables, Florida: Miami Geological Society; pp. 219-257. 551 pages.

Short, L.L. 1982. Woodpeckers of the world. Museum of Natural History [Greenville, Delaware], Monograph Series xviii + 676 pp.

Smith, J.I. 1987. Evidence of hybridization between red-bellied and golden-fronted woodpeckers. Condor 89:377-386.

Stevenson, H. M., and B. H. Anderson. 1994. The birdlife of Florida. University Press of Florida, Gainesville. 892 pp.

Terres, J.K. 1980. The Audubon Society encyclopedia of North American birds. Alfred A. Knopf, New York.

---

For more information:: SE-GAP Analysis Project / BaSIC  
127 David Clark Labs  
Dept. of Biology, NCSU  
Raleigh, NC 27695-7617  
(919) 513-2853  
[www.basic.ncsu.edu/segap](http://www.basic.ncsu.edu/segap)

Compiled: 15 September 2011

This data was compiled and/or developed  
by the Southeast GAP Analysis Project at  
The Biodiversity and Spatial Information  
Center, North Carolina State University.