



SOUTHEAST GAP ANALYSIS PROJECT



Species Modeling Report

Ring-necked Duck

Aythya collaris

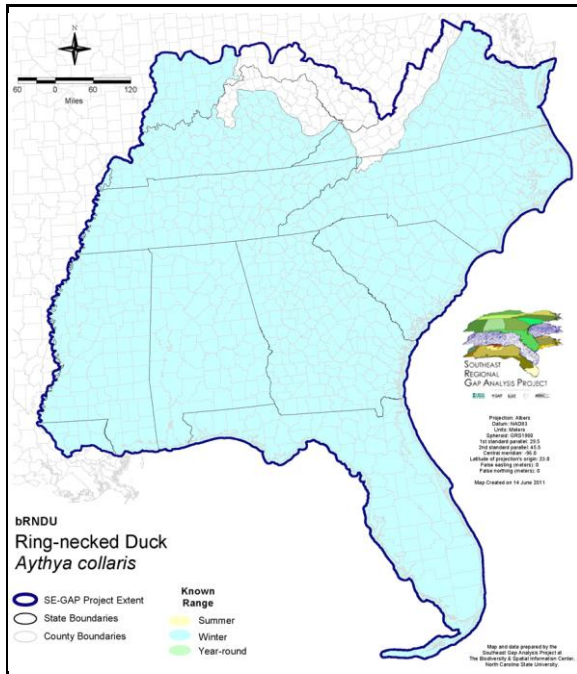
Taxa: Avian
Order: Anseriformes
Family: Anatidae

SE-GAP Spp Code: **brNDU**

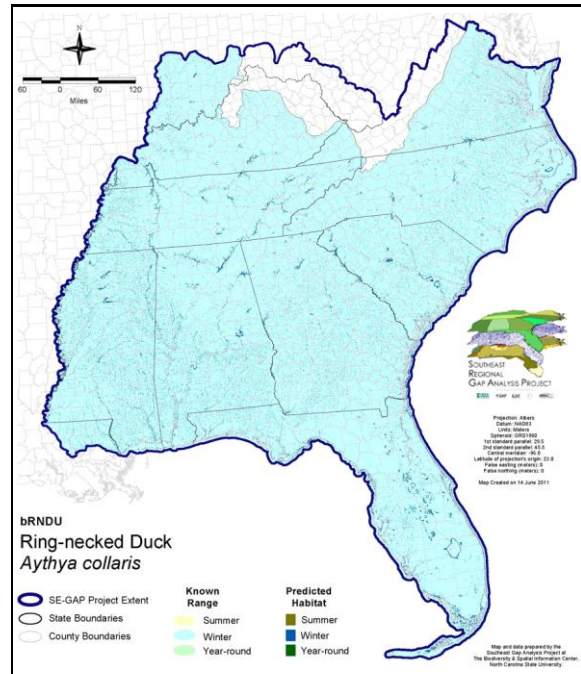
ITIS Species Code: 175128

NatureServe Element Code: ABNJB11040

KNOWN RANGE:



PREDICTED HABITAT:



Range Map Link: http://www.basic.ncsu.edu/segap/datazip/maps/SE_Range_brNDU.pdf

Predicted Habitat Map Link: http://www.basic.ncsu.edu/segap/datazip/maps/SE_Dist_brNDU.pdf

GAP Online Tool Link: <http://www.gapservice.ncsu.edu/segap/segap/index2.php?species=brNDU>

Data Download: http://www.basic.ncsu.edu/segap/datazip/region/vert/brNDU_se00.zip

PROTECTION STATUS:

Reported on March 14, 2011

Federal Status: ---

State Status: AL (GB), ID (G), ID (G), KY (N), NV (YES), NY (PB - GS), RI (Not Listed), UT (None), BC (4 (2005)), QC (Non suivie)

NS Global Rank: G5

NS State Rank: AK (S2N,S3B), AL (S5N), AR (S4N), AZ (S5), CA (SNRB,SNRN), CO (S4B), CO (S4B), CT (SNA), DC (S3N), DE (S4N), FL (SNRN), GA (S4), IA (S4N), IA (S4N), ID (S3B), ID (S3B), IL (SNA), IN (SHB), IN (SHB), KS (S3N), KY (S4N), LA (S5N), MA (SXB,S5N), MA (SXB,S5N), MD (S2N), ME (S5B), MI (S4), MN (SNRB,SNRM), MN (SNRB,SNRM), MO (SNRN,SNRM), MS (S5N), MT (S5B), MT (S5B), NC (S5N), ND (SNRB), NE (SU), NH (S3B), NH (S3B), NJ (SNA), NM (S1B,S5N), NV (S2B,S4N), NY (S3), OH (SNRN), OK (S4N), OR (S3), PA (S3N), RI (SNA), SC (SNRN), SD (S4B), SD (S4B), TN (S5N), TX (S4N), UT (S4S5N), VA (SNRN), VT (S4S5N), WA (S3N,S4B), WI (S4B), WI (S4B), WV (S3N), WY (S4B), AB (S5), BC (S5B,S5N), LB (S5B), MB (S5B), MB (S5B), NB (S5B), NF (S5B), NS (S5B), NT (SNRB), ON (S5), ON (S5), PE (S5B), QC (S5B), SK (S5B,S5M), YT (S5B)

SUMMARY OF PREDICTED HABITAT BY MANAGMENT AND GAP PROTECTION STATUS:

	US FWS		US Forest Service		Tenn. Valley Author.		US DOD/ACOE	
	ha	%	ha	%	ha	%	ha	%
Status 1	19,120.6	< 1	665.5	< 1	0.0	0	0.0	0
Status 2	21,670.1	< 1	5,072.2	< 1	0.0	0	603.3	< 1
Status 3	366.8	< 1	49,194.3	2	3,798.6	< 1	29,057.3	< 1
Status 4	5.2	< 1	0.0	0	0.0	0	11.4	< 1
Total	41,162.7	1	54,932.0	2	3,798.6	< 1	29,672.0	< 1
	US Dept. of Energy		US Nat. Park Service		NOAA		Other Federal Lands	
	ha	%	ha	%	ha	%	ha	%
Status 1	0.0	0	36,228.3	1	362.3	< 1	871.3	< 1
Status 2	0.0	0	8,685.8	< 1	10,033.8	< 1	2.6	< 1
Status 3	4,365.0	< 1	4,415.1	< 1	0.0	0	277.9	< 1
Status 4	0.0	0	3.0	9	0.0	0	0.0	0
Total	4,365.0	< 1	49,332.3	2	10,396.2	< 1	1,151.8	< 1
	Native Am. Reserv.		State Park/Hist. Park		State WMA/Gameland		State Forest	
	ha	%	ha	%	ha	%	ha	%
Status 1	0.0	0	70.7	< 1	1.5	< 1	0.0	0
Status 2	0.0	0	486.5	< 1	51,705.4	2	14.1	< 1
Status 3	787.5	< 1	34,337.8	1	16,718.9	< 1	10,255.8	< 1
Status 4	0.0	0	0.0	0	3,250.6	< 1	3.7	< 1
Total	787.5	< 1	34,895.0	1	71,676.4	2	10,273.6	< 1
	State Coastal Reserve		ST Nat.Area/Preserve		Other State Lands		Private Cons. Easemt.	
	ha	%	ha	%	ha	%	ha	%
Status 1	0.0	0	579.6	< 1	0.0	0	0.0	0
Status 2	9,149.4	< 1	9,256.0	< 1	1.6	< 1	171.7	< 1
Status 3	0.0	0	707.9	< 1	1,033.6	< 1	4,386.3	< 1
Status 4	0.0	0	0.0	0	322.8	< 1	0.0	0
Total	9,149.4	< 1	10,543.5	< 1	1,358.0	< 1	4,558.1	< 1
	Private Land - No Res.		Water		Overall Total			
	ha	%	ha	%	ha	%		
Status 1	0.0	2	0.0	0	57,900.0	2		
Status 2	0.6	< 1	0.0	5	116,853.3	4		
Status 3	138.2	< 1	< 0.1	< 1	159,841.0	7		
Status 4	2,654,637.5	85	61,453.3	2	2,722,933.0	88		
Total	2,654,776.4	85	61,453.5	2	3,057,527.3	100		

GAP Status 1: An area having permanent protection from conversion of natural land cover and a mandated management plan in operation to maintain a natural state within which disturbance events (of natural type, frequency, and intensity) are allowed to proceed without interference or are mimicked through management.

GAP Status 2: An area having permanent protection from conversion of natural land cover and a mandated management plan in operation to maintain a primarily natural state, but which may receive use or management practices that degrade the quality of existing natural communities.

GAP Status 3: An area having permanent protection from conversion of natural land cover for the majority of the area, but subject to extractive uses of either a broad, low-intensity type or localized intense type. It also confers protection to federally listed endangered and threatened species throughout the area.

GAP Status 4: Lack of irrevocable easement or mandate to prevent conversion of natural habitat types to anthropogenic habitat types. Allows for intensive use throughout the tract. Also includes those tracts for which the existence of such restrictions or sufficient information to establish a higher status is unknown.

PREDICTED HABITAT MODEL(S):

Winter Model:

Habitat Description: Ring-necked ducks will utilize a variety of wetland situations during the winter. Generally they can be found wintering in swamps, rivers, sloughs, floodplains, fresh and brackish estuaries, and both deep and shallow lakes, although they prefer deeper open waters (Hohman 1998, NatureServe 2005). Ring-necked ducks are also known to occupy managed impoundments and flooded agricultural lands and aquacultural ponds (Hohman 1998). Amy Silvano 05sept05

Ecosystem Classification: Primarily aquatic. Open water, Coastal, Freshwater & Brackish Marshes, Depressional, Lakes/ponds/Rivers, Floodplain/Riparian and ag lands. Amy Silvano 05Sept05

Hydrography Mask:

Utilizes flowing water features with buffers of 30m from and 1000m into selected water features.

Utilizes open water features with buffers of 30m from and 1000m into selected water features.

Selected Map Units:

Functional Group	Map Unit Name
Brackish Tidal Marsh & Wetland	Atlantic Coastal Plain Central Salt and Brackish Tidal Marsh
Brackish Tidal Marsh & Wetland	Atlantic Coastal Plain Embayed Region Tidal Salt and Brackish Marsh
Brackish Tidal Marsh & Wetland	Atlantic Coastal Plain Indian River Lagoon Tidal Marsh
Brackish Tidal Marsh & Wetland	Atlantic Coastal Plain Northern Sea-Level Fen
Brackish Tidal Marsh & Wetland	Atlantic Coastal Plain Northern Tidal Salt Marsh
Brackish Tidal Marsh & Wetland	Atlantic Coastal Plain Northern Tidal Wooded Swamp
Brackish Tidal Marsh & Wetland	Atlantic Coastal Plain Southern Tidal Wooded Swamp
Brackish Tidal Marsh & Wetland	East Gulf Coastal Plain Tidal Wooded Swamp
Brackish Tidal Marsh & Wetland	Florida Big Bend Salt-Brackish Tidal Marsh
Brackish Tidal Marsh & Wetland	Mississippi Sound Salt and Brackish Tidal Marsh
Brackish Tidal Marsh & Wetland	South Florida Everglades Sawgrass Marsh
Brackish Tidal Marsh & Wetland	South Florida Mangrove Swamp
Brackish Tidal Marsh & Wetland	Southwest Florida Perched Barriers Salt Swamp and Lagoon - Mangrove Modifier
Brackish Tidal Marsh & Wetland	Southwest Florida Perched Barriers Salt Swamp and Lagoon - Marsh Modifier
Coastal Dune & Freshwater Wetland	Atlantic and Gulf Coastal Plain Interdunal Wetland
Freshwater Tidal Marsh & Wetland	Atlantic Coastal Plain Central Fresh-Oligohaline Tidal Marsh
Freshwater Tidal Marsh & Wetland	Atlantic Coastal Plain Embayed Region Tidal Freshwater Marsh
Freshwater Tidal Marsh & Wetland	Atlantic Coastal Plain Northern Fresh and Oligohaline Tidal Marsh
Freshwater Tidal Marsh & Wetland	Florida Big Bend Fresh-Oligohaline Tidal Marsh
Water	Open Water (Brackish/Salt)
Water	Open Water (Fresh)
Wetlands	Atlantic Coastal Plain Blackwater Stream Floodplain Forest - Forest Modifier
Wetlands	Atlantic Coastal Plain Blackwater Stream Floodplain Forest - Herbaceous Modifier
Wetlands	Atlantic Coastal Plain Brownwater Stream Floodplain Forest
Wetlands	Atlantic Coastal Plain Large Natural Lakeshore
Wetlands	Atlantic Coastal Plain Northern Pondshore
Wetlands	Atlantic Coastal Plain Small Blackwater River Floodplain Forest
Wetlands	Atlantic Coastal Plain Small Brownwater River Floodplain Forest
Wetlands	Atlantic Coastal Plain Xeric River Dune
Wetlands	Central Appalachian Floodplain - Forest Modifier
Wetlands	Central Appalachian Floodplain - Herbaceous Modifier
Wetlands	Central Appalachian Riparian - Forest Modifier
Wetlands	Central Appalachian Riparian - Herbaceous Modifier
Wetlands	Central Florida Herbaceous Pondshore
Wetlands	East Gulf Coastal Plain Large River Floodplain Forest - Forest Modifier
Wetlands	East Gulf Coastal Plain Large River Floodplain Forest - Herbaceous Modifier
Wetlands	East Gulf Coastal Plain Small Stream and River Floodplain Forest
Wetlands	Lower Mississippi River Bottomland and Floodplain Forest
Wetlands	Lower Mississippi River Bottomland Depressions - Forest Modifier

Wetlands	Lower Mississippi River Bottomland Depressions - Herbaceous Modifier
Wetlands	Mississippi River Low Floodplain (Bottomland) Forest
Wetlands	Mississippi River Riparian Forest
Wetlands	South Florida Pond-Apple/Popash Slough
Wetlands	South-Central Interior Large Floodplain - Forest Modifier
Wetlands	South-Central Interior Large Floodplain - Herbaceous Modifier
Wetlands	South-Central Interior Small Stream and Riparian
Wetlands	Southern Coastal Plain Blackwater River Floodplain Forest
Wetlands	Southern Coastal Plain Spring-run Stream Aquatic Vegetation
Wetlands	Southern Piedmont Large Floodplain Forest - Forest Modifier
Wetlands	Southern Piedmont Large Floodplain Forest - Herbaceous Modifier
Wetlands	Southern Piedmont Small Floodplain and Riparian Forest
Wetlands	Unconsolidated Shore (Lake/River/Pond)

Selected Secondary Map Units within 120m of Primary Map Units:

<u>Functional Group</u>	<u>Map Unit Name</u>
Anthropogenic	Row Crop

CITATIONS: American Ornithologists' Union (AOU), Committee on Classification and Nomenclature. 1983. Check-list of North American Birds. Sixth Edition. American Ornithologists' Union, Allen Press, Inc., Lawrence, Kansas.

Bellrose, F.C. 1976. Ducks, geese and swans of North America. Stackpole Books, Harrisburg, Pa.

Di Silvestro, R. L., editor. 1986. Audubon wildlife report 1986. National Audubon Society, New York. 1094 pp. [available from Academic Press, San Diego, CA].

Harrison, C. 1978. A field guide to the nests, eggs and nestlings of North American birds. Collins, Cleveland, Ohio.

Madge, S., and H. Burn. 1988. Waterfowl: an identification guide to the ducks, geese and swans of the world. Houghton Mifflin Co., Boston. 298 pp.

McAuley, Daniel G. 1986. Ring-necked duck productivity in relation to wetland acidity: Nest success, duckling diet, and survival. M.S. Thesis, University of Maine at Orono. 81 pp.

Mendall, H. L. 1958. The ring-necked duck in the Northeast. Univ. Maine. Bull. 60(16). 320 pp.

Raffaele, H.A. 1983. A guide to the birds of Puerto Rico and the Virgin Islands. Fondo Educativo Interamericano, San Juan, Puerto Rico. 255 pp.

Root, T. 1988. Atlas of wintering North American birds: An analysis of Christmas Bird Count data. University of Chicago Press. 336 pp.

Stiles, F.G., and A.F. Skutch. 1989. A guide to the birds of Costa Rica. Comstock Publ. Associates, Cornell University Press, Ithaca, New York. 511 pp.

Terres, J.K. 1980. The Audubon Society encyclopedia of North American birds. Alfred A. Knopf, New York.

For more information:: SE-GAP Analysis Project / BaSIC
 127 David Clark Labs
 Dept. of Biology, NCSU
 Raleigh, NC 27695-7617
 (919) 513-2853
www.basic.ncsu.edu/segap

Compiled: 15 September 2011

This data was compiled and/or developed by the Southeast GAP Analysis Project at The Biodiversity and Spatial Information Center, North Carolina State University.