



SOUTHEAST GAP ANALYSIS PROJECT



Species Modeling Report

Ring-necked Pheasant

Phasianus colchicus

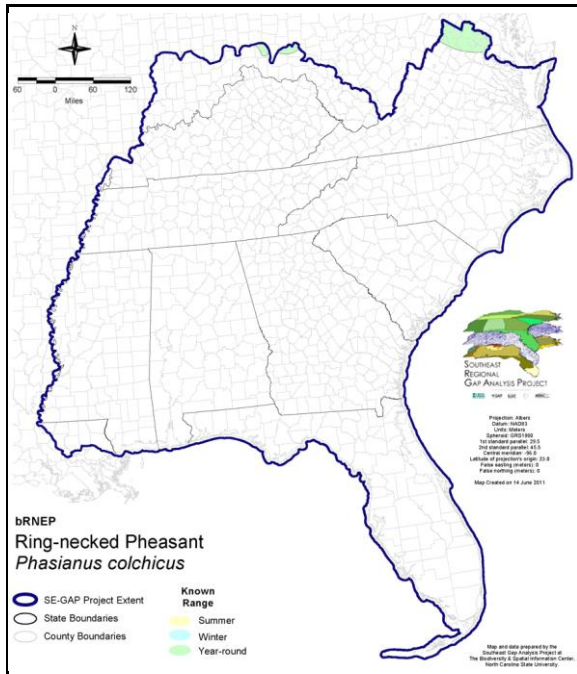
Taxa: Avian
 Order: Galliformes
 Family: Phasianidae

SE-GAP Spp Code: **brNEP**

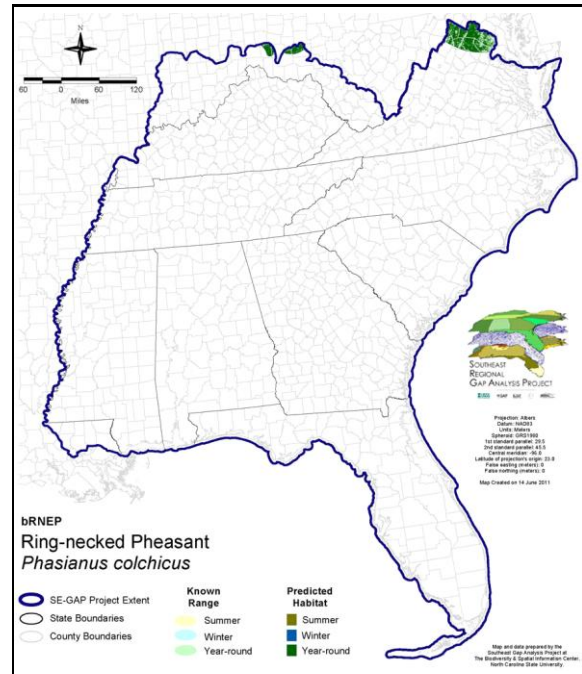
ITIS Species Code: 175905

NatureServe Element Code: ABNLC07010

KNOWN RANGE:



PREDICTED HABITAT:



Range Map Link: http://www.basic.ncsu.edu/segap/datazip/maps/SE_Range_brNEP.pdf

Predicted Habitat Map Link: http://www.basic.ncsu.edu/segap/datazip/maps/SE_Dist_brNEP.pdf

GAP Online Tool Link: <http://www.gapservice.ncsu.edu/segap/segap/index2.php?species=brNEP>

Data Download: http://www.basic.ncsu.edu/segap/datazip/region/vert/brNEP_se00.zip

PROTECTION STATUS:

Reported on March 14, 2011

Federal Status: ---

State Status: ID (G), NV (YES), NY (PB - GS), RI (Not Listed), UT (None), BC (7 (2005)), QC (Non suivie)

NS Global Rank: G5

NS State Rank: AZ (SNA), CA (SNA), CO (SNA), CT (SNA), DE (SNA), HI (SNA), IA (SNA), ID (SNA), IL (SNA), IN (SNA), KS (SNA), MA (SNA), MD (SNA), ME (SNA), MI (SNA), MN (SNA), MT (SNA), NC (SNA), ND (SNA), NE (SNA), NH (SNA), NJ (SNA), NM (SNA), NV (SNA), NY (SNA), OK (SNA), OR (SNA), PA (SNA), RI (SNA), SD (SNA), TN (SNA), TX (SNA), UT (SNA), VA (SNA), VT (SNA), WA (SNA), WI (SNA), WV (SNA), WY (SNA), AB (SNA), BC (SNA), MB (SNA), NB (SNA), NS (SNA), ON (SNA), PE (SNA), QC (SNA), SK (SNA)

SUMMARY OF PREDICTED HABITAT BY MANAGMENT AND GAP PROTECTION STATUS:

	US FWS		US Forest Service		Tenn. Valley Author.		US DOD/ACOE	
	ha	%	ha	%	ha	%	ha	%
Status 1	0.0	0	0.0	0	0.0	0	0.0	0
Status 2	573.4	< 1	518.3	< 1	0.0	0	539.0	< 1
Status 3	151.3	< 1	1,594.5	< 1	0.0	0	5,306.8	< 1
Status 4	0.0	0	0.0	0	0.0	0	0.5	< 1
Total	724.7	< 1	2,112.8	< 1	0.0	0	5,846.2	1
	US Dept. of Energy		US Nat. Park Service		NOAA		Other Federal Lands	
	ha	%	ha	%	ha	%	ha	%
Status 1	0.0	0	1,760.0	< 1	0.0	0	0.0	0
Status 2	0.0	0	0.0	0	0.0	0	0.0	0
Status 3	0.0	0	4,515.4	< 1	0.0	0	0.0	0
Status 4	0.0	0	0.0	0	0.0	0	0.0	0
Total	0.0	0	6,275.3	1	0.0	0	0.0	0
	Native Am. Reserv.		State Park/Hist. Park		State WMA/Gameland		State Forest	
	ha	%	ha	%	ha	%	ha	%
Status 1	0.0	0	0.0	0	0.0	0	0.0	0
Status 2	0.0	0	0.0	0	429.3	< 1	0.0	0
Status 3	0.0	0	1,376.1	< 1	0.0	0	186.8	< 1
Status 4	0.0	0	0.0	0	0.0	0	0.0	0
Total	0.0	0	1,376.1	< 1	429.3	< 1	186.8	< 1
	State Coastal Reserve		ST Nat.Area/Preserve		Other State Lands		Private Cons. Easemt.	
	ha	%	ha	%	ha	%	ha	%
Status 1	0.0	0	0.0	0	0.0	0	0.0	0
Status 2	0.0	0	176.8	< 1	0.0	0	0.0	0
Status 3	0.0	0	0.0	0	0.0	0	0.0	0
Status 4	0.0	0	0.0	0	31.6	< 1	0.0	0
Total	0.0	0	176.8	< 1	31.6	< 1	0.0	0
	Private Land - No Res.		Water		Overall Total			
	ha	%	ha	%	ha	%	ha	%
Status 1	0.0	0	0.0	0			1,760.0	< 1
Status 2	0.0	0	0.0	0			2,236.8	< 1
Status 3	0.0	0	0.0	0			13,130.8	3
Status 4	521,068.6	97	278.1	< 1			521,378.7	97
Total	521,068.6	97	278.1	< 1			538,506.3	100

GAP Status 1: An area having permanent protection from conversion of natural land cover and a mandated management plan in operation to maintain a natural state within which disturbance events (of natural type, frequency, and intensity) are allowed to proceed without interference or are mimicked through management.

GAP Status 2: An area having permanent protection from conversion of natural land cover and a mandated management plan in operation to maintain a primarily natural state, but which may receive use or management practices that degrade the quality of existing natural communities.

GAP Status 3: An area having permanent protection from conversion of natural land cover for the majority of the area, but subject to extractive uses of either a broad, low-intensity type or localized intense type. It also confers protection to federally listed endangered and threatened species throughout the area.

GAP Status 4: Lack of irrevocable easement or mandate to prevent conversion of natural habitat types to anthropogenic habitat types. Allows for intensive use throughout the tract. Also includes those tracts for which the existence of such restrictions or sufficient information to establish a higher status is unknown.

PREDICTED HABITAT MODEL(S):

Year-round Model:

Habitat Description: Ring-necked pheasants are adaptable to various types of habitats. They are mostly associated with agricultural areas, but will inhabit any type of semi-open area, such as the edge of marshes and forests, brushy fields, hedgrows, and especially, crop lands with grassy patches as well as wild haylands, old fields, and native warm-grass prairies (Guidice & Ratti 2001, NRCS Fish & Wildlife Habitat Management Leaflet 1999). Amy Silvano 08Sept05

Ecosystem Classifiers: Will utilize edge so, accept all MU's that fall in edge buffer however DO NOT restrict AG, Pasture, or prairie (indicated as PMUs) to Edge Buffer. Also, these contiguous patches of AG, Pasture, & prairie should be adjacent to the Edge Habitat. So basically do not select any isolated AG/Pasture or prairie patches. Also exclude Urban from edge buffer. Amy Silvano 08sept05

Customized Model: Found from sea level up to 3353m (Guidice & Ratti 2001). ****Hand Modeling, accept all MU's that fall in edge buffer however DO NOT restrict AG, Pasture, or prairie (indicated as PMUs) to Edge Buffer. Also, these contiguous patches of AG, Pasture, & Prairie should be adjacent to the Edge Habitat. So basically do not select any isolated AG/Pasture or Prairie patches. Also exclude Urban from edge buffer. Amy Silvano 08sept05

Elevation Mask: < 3353m

Mask of Forest/Open Ecotone: Include within 250m of ecotone edge.

Mask of Woodlands and Shrublands: Include all woodland and shrubland interiors and 250m buffer from them.

Selected Map Units:

Functional Group	Map Unit Name
Anthropogenic	Pasture/Hay
Anthropogenic	Row Crop

- CITATIONS:** American Ornithologists' Union (AOU), Committee on Classification and Nomenclature. 1983. Check-list of North American Birds. Sixth Edition. American Ornithologists' Union, Allen Press, Inc., Lawrence, Kansas.
- Ehrlich, P.R., D.S. Dobkin, and D. Wheye. 1988. The birder's handbook: a field guide to the natural history of North American birds. Simon and Shuster, Inc., New York. xxx + 785 pp.
- Fussell, J.O. III. 1994. A birder's guide to coastal North Carolina. Chapel Hill and London: The University of North Carolina Press.
- Guidice, J. H., and J. T. Ratti. 2001. Ring-necked Pheasant (*Phasianus colchicus*). In *The Birds of North America*, No. 572 (A. Poole and F. Gill, eds.). The Birds of North America, Inc., Philadelphia, PA.
- Harrison, C. 1978. A field guide to the nests, eggs and nestlings of North American birds. Collins, Cleveland, Ohio.
- Harrison, H.H. 1975. A field guide to bird's nests in the U.S. east of the Mississippi River. Houghton Mifflin Company, Boston, Massachusetts. 257 p.
- Howman, K. C. R. 1979. Pheasants, their breeding and management. 117 pp.
- Kaufman K. 1996. Lives of North American Birds. Boston, New York: Houghton Mifflin Company.
- McAtee, W.L. 1945. The ring-necked pheasant and its management in North America. Wash. 320 pp.
- Natural Resources Conservation Service (NRCS). 1999. Ring-necked Pheasant (*Phasianus colchicus*). Fish and Wildlife Habitat Management Leaflet Number 10, October 1999.
- Potter, E. F., J. F. Parnell, and R. P. Teulings. 1980. Birds of the Carolinas. Univ. North Carolina Press, Chapel Hill. 408 pp.
- Pough, R. H. 1957. Audubon Western Bird Guide. Doubleday. 316 pp.
- Reichel, J. D., and P. O. Glass. 1991. Checklist of the birds of the Mariana Islands. *Elepaio* 50:3-11.
- Terres, J.K. 1980. The Audubon Society encyclopedia of North American birds. Alfred A. Knopf, New York.

For more information:: SE-GAP Analysis Project / BaSIC
127 David Clark Labs
Dept. of Biology, NCSU
Raleigh, NC 27695-7617
(919) 513-2853
www.basic.ncsu.edu/segap

Compiled: 15 September 2011

This data was compiled and/or developed
by the Southeast GAP Analysis Project at
The Biodiversity and Spatial Information
Center, North Carolina State University.