



# SOUTHEAST GAP ANALYSIS PROJECT



## Species Modeling Report

### Red-winged Blackbird

*Agelaius phoeniceus*

Taxa: Avian

Order: Passeriformes

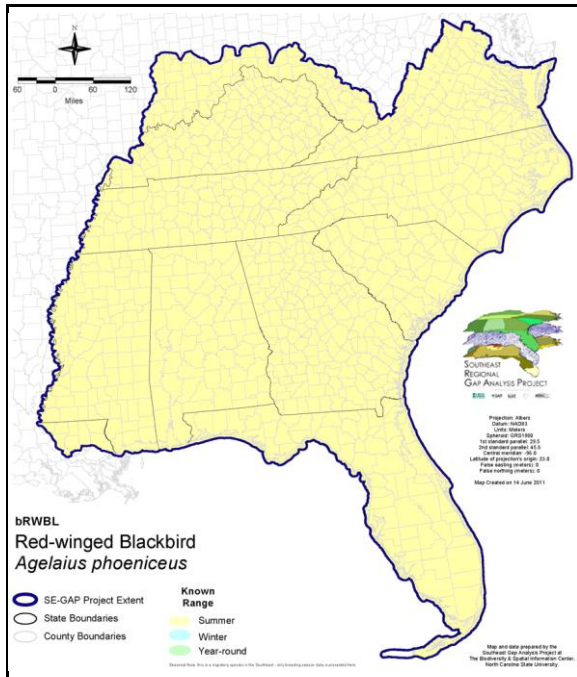
Family: Icteridae

SE-GAP Spp Code: **bRWBL**

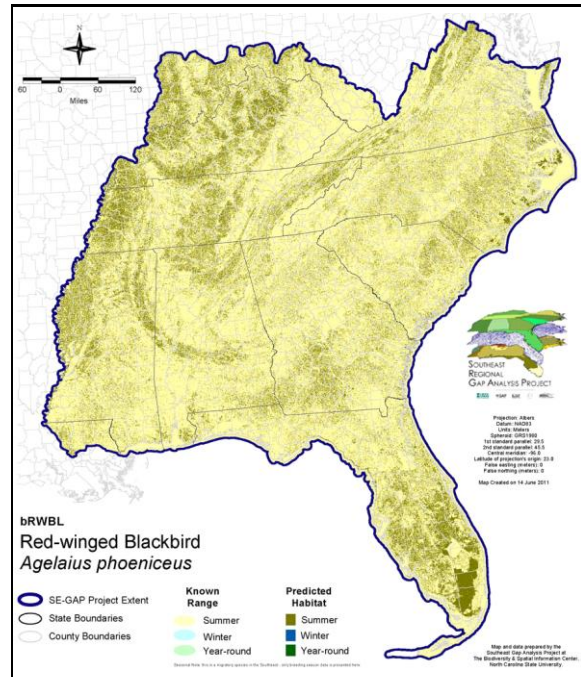
ITIS Species Code: 179045

NatureServe Element Code: ABPBXB0010

#### KNOWN RANGE:



#### PREDICTED HABITAT:



Range Map Link: [http://www.basic.ncsu.edu/segap/datazip/maps/SE\\_Range\\_bRWBL.pdf](http://www.basic.ncsu.edu/segap/datazip/maps/SE_Range_bRWBL.pdf)

Predicted Habitat Map Link: [http://www.basic.ncsu.edu/segap/datazip/maps/SE\\_Dist\\_bRWBL.pdf](http://www.basic.ncsu.edu/segap/datazip/maps/SE_Dist_bRWBL.pdf)

GAP Online Tool Link: <http://www.gapservice.ncsu.edu/segap/segap/index2.php?species=bRWBL>

Data Download: [http://www.basic.ncsu.edu/segap/datazip/region/vert/bRWBL\\_se00.zip](http://www.basic.ncsu.edu/segap/datazip/region/vert/bRWBL_se00.zip)

#### PROTECTION STATUS:

Reported on March 14, 2011

Federal Status: ---

State Status: ID (P), KY (N), NJ (S/S), NV (YES), NY (PB), RI (Not Listed), UT (None), BC (4 (2005)), QC (Non suivie)

NS Global Rank: G5

NS State Rank: AK (S4B), AL (S5), AR (S5B,S5N), AZ (S5), CA (S5), CO (S5), CT (S5B), CT (S5B), DC (S3B,S4S5N), DE (S5), FL (SNR), GA (S5), IA (S5), ID (S5B,S3N), IL (S5), IN (S4S5), KS (S5), KY (S5B,S4N), LA (S5), MA (S5), MD (S5), ME (S4S5B,S4S5N), MI (S5), MN (SNRB,SNRN), MO (S5), MS (S5B,S5N), MT (S5B), MT (S5B), NC (S5B,S5N), ND (SNRB), NE (S5), NH (S5B), NJ (S5B,S5N), NM (S5B,S5N), NV (S5), NY (S5), OH (S5), OK (S5), OR (S5), PA (S5B,S4N), RI (S5B), SC (SNRB,SNRN), SD (S5B), SD (S5B), TN (S5), TX (S5B), UT (S5), VA (S5), VT (S5B), VT (S5B), WA (S5B,S5N), WI (S5B), WI (S5B), WV (S4N,S5B), WY (S5B), WY (S5B), AB (S5), BC (S5B,S5N), LB (SNA), MB (S5B), MB (S5B), NB (S5B), NF (S1S2B), NS (S5B), NT (SNRB), ON (S4), PE (S5B), QC (S4S5B), SK (S5B), VT (S5B)

**SUMMARY OF PREDICTED HABITAT BY MANAGMENT AND GAP PROTECTION STATUS:**

	US FWS		US Forest Service		Tenn. Valley Author.		US DOD/ACOE	
	ha	%	ha	%	ha	%	ha	%
Status 1	68,369.9	< 1	695.1	< 1	0.0	0	0.0	0
Status 2	102,857.9	< 1	6,178.4	< 1	0.0	0	289.7	< 1
Status 3	1,104.6	< 1	96,638.0	< 1	13,629.6	< 1	102,214.5	< 1
Status 4	12.2	< 1	0.0	0	0.0	0	96.7	< 1
Total	172,344.5	< 1	103,511.4	< 1	13,629.6	< 1	102,600.9	< 1
	US Dept. of Energy		US Nat. Park Service		NOAA		Other Federal Lands	
	ha	%	ha	%	ha	%	ha	%
Status 1	0.0	0	189,079.5	< 1	842.5	< 1	6,306.2	< 1
Status 2	0.0	0	26,709.6	< 1	25,504.4	< 1	26.8	< 1
Status 3	3,627.7	< 1	135,756.1	< 1	0.0	0	720.0	< 1
Status 4	0.0	0	0.0	0	0.0	0	0.0	0
Total	3,627.7	< 1	351,545.1	2	26,346.9	< 1	7,053.0	< 1
	Native Am. Reserv.		State Park/Hist. Park		State WMA/Gameland		State Forest	
	ha	%	ha	%	ha	%	ha	%
Status 1	0.0	0	23.7	< 1	5.7	< 1	0.0	0
Status 2	0.0	0	339.8	< 1	483,160.0	2	3.0	< 1
Status 3	1,368.0	< 1	252,248.7	1	45,731.2	< 1	61,708.9	< 1
Status 4	0.0	0	0.0	0	2,833.1	< 1	< 0.1	< 1
Total	1,368.0	< 1	252,612.1	1	531,729.9	2	61,711.9	< 1
	State Coastal Reserve		ST Nat.Area/Preserve		Other State Lands		Private Cons. Easemt.	
	ha	%	ha	%	ha	%	ha	%
Status 1	0.0	0	567.7	< 1	0.0	0	0.0	0
Status 2	25,981.1	< 1	28,663.6	< 1	1.2	< 1	1,007.6	< 1
Status 3	0.0	0	7,022.4	< 1	3,905.1	< 1	57,734.8	< 1
Status 4	0.0	0	0.0	0	1,340.0	< 1	< 0.1	< 1
Total	25,981.1	< 1	36,253.7	< 1	5,246.3	< 1	58,742.6	< 1
	Private Land - No Res.		Water		Overall Total			
	ha	%	ha	%	ha	%		
Status 1	0.0	7	0.0	0	265,890.3	1		
Status 2	0.8	< 1	0.0	0	700,723.8	3		
Status 3	116.7	< 1	< 0.1	< 1	783,526.3	4		
Status 4	21,040,868.4	92	27,621.0	< 1	21,075,592.5	92		
Total	21,040,986.2	92	27,621.1	< 1	22,825,733.0	100		

GAP Status 1: An area having permanent protection from conversion of natural land cover and a mandated management plan in operation to maintain a natural state within which disturbance events (of natural type, frequency, and intensity) are allowed to proceed without interference or are mimicked through management.

GAP Status 2: An area having permanent protection from conversion of natural land cover and a mandated management plan in operation to maintain a primarily natural state, but which may receive use or management practices that degrade the quality of existing natural communities.

GAP Status 3: An area having permanent protection from conversion of natural land cover for the majority of the area, but subject to extractive uses of either a broad, low-intensity type or localized intense type. It also confers protection to federally listed endangered and threatened species throughout the area.

GAP Status 4: Lack of irrevocable easement or mandate to prevent conversion of natural habitat types to anthropogenic habitat types. Allows for intensive use throughout the tract. Also includes those tracts for which the existence of such restrictions or sufficient information to establish a higher status is unknown.

## PREDICTED HABITAT MODEL(S):

### Summer Model:

Habitat Description: Nests in freshwater or brackish marshes (Ehrlich et al. 1988), shrub swamps, grasslands (Nicholson 1997), lake margins, and other open habitats (Potter et al 1980). At the beginning of the breeding season, males forage primarily in upland meadows and farmlands; once the females arrive on the breeding grounds, males spend more of their time foraging there (Skutch 1996).  
In marshes, nests are built near or over water (Ehrlich et al. 1988) in clumps of cattail or in bulrushes, shrubs, or small trees. In upland habitats, nests are placed in sturdy herbaceous plants or occasionally on the ground (Nicholson 1997). Insects are gleaned from (Ehrlich et al. 1988) and males display on emergent vegetation (Skutch 1996).

Quoted directly for NC habitat notes - K. Cook-5-13-05

### Hydrography Mask:

Utilizes flowing water features with buffer of 250m from selected water features.

Utilizes open water features with buffer of 250m from selected water features.

Utilizes wet vegetation features with buffers of 250m from and unlimited into selected vegetation features.

### Selected Map Units:

Functional Group	Map Unit Name
Anthropogenic	Low Intensity Developed
Anthropogenic	Pasture/Hay
Anthropogenic	Row Crop
Brackish Tidal Marsh & Wetland	Atlantic Coastal Plain Central Salt and Brackish Tidal Marsh
Brackish Tidal Marsh & Wetland	Atlantic Coastal Plain Embayed Region Tidal Salt and Brackish Marsh
Brackish Tidal Marsh & Wetland	Atlantic Coastal Plain Indian River Lagoon Tidal Marsh
Brackish Tidal Marsh & Wetland	Atlantic Coastal Plain Northern Sea-Level Fen
Brackish Tidal Marsh & Wetland	Atlantic Coastal Plain Northern Tidal Salt Marsh
Brackish Tidal Marsh & Wetland	Florida Big Bend Salt-Brackish Tidal Marsh
Brackish Tidal Marsh & Wetland	Mississippi Sound Salt and Brackish Tidal Marsh
Brackish Tidal Marsh & Wetland	South Florida Everglades Sawgrass Marsh
Brackish Tidal Marsh & Wetland	Southwest Florida Perched Barriers Salt Swamp and Lagoon - Marsh Modifier
Coastal Dune & Freshwater Wetland	Atlantic and Gulf Coastal Plain Interdunal Wetland
Coastal Dune & Freshwater Wetland	Atlantic Coastal Plain Northern Dune and Maritime Grassland
Coastal Dune & Freshwater Wetland	Atlantic Coastal Plain Southern Dune and Maritime Grassland
Coastal Dune & Freshwater Wetland	East Gulf Coastal Plain Dune and Coastal Grassland
Forest/Woodland	East Gulf Coastal Plain Black Belt Calcareous Prairie and Woodland - Woodland Modifier
Freshwater Tidal Marsh & Wetland	Atlantic Coastal Plain Central Fresh-Oligohaline Tidal Marsh
Freshwater Tidal Marsh & Wetland	Atlantic Coastal Plain Embayed Region Tidal Freshwater Marsh
Freshwater Tidal Marsh & Wetland	Atlantic Coastal Plain Northern Fresh and Oligohaline Tidal Marsh
Freshwater Tidal Marsh & Wetland	Florida Big Bend Fresh-Oligohaline Tidal Marsh
Prairie	Bluegrass Basin Savanna and Woodland
Prairie	East Gulf Coastal Plain Black Belt Calcareous Prairie and Woodland
Prairie	East Gulf Coastal Plain Black Belt Calcareous Prairie and Woodland - Herbaceous Modifier
Prairie	East Gulf Coastal Plain Jackson Plain Prairie and Barrens
Prairie	East Gulf Coastal Plain Jackson Prairie and Woodland
Prairie	Eastern Highland Rim Prairie and Barrens
Prairie	Eastern Highland Rim Prairie and Barrens - Dry Modifier
Prairie	Florida Dry Prairie
Prairie	Panhandle Florida Limestone Glade
Prairie	Pennyroyal Karst Plain Prairie and Barrens
Prairie	Southern Ridge and Valley Patch Prairie
Prairie	Western Highland Rim Prairie and Barrens
Wetlands	Atlantic Coastal Plain Blackwater Stream Floodplain Forest - Herbaceous Modifier
Wetlands	Atlantic Coastal Plain Clay-Based Carolina Bay Forested Wetland
Wetlands	Atlantic Coastal Plain Clay-Based Carolina Bay Herbaceous Wetland

Wetlands	Atlantic Coastal Plain Depression Pondshore
Wetlands	Atlantic Coastal Plain Large Natural Lakeshore
Wetlands	Atlantic Coastal Plain Northern Basin Swamp and Wet Hardwood Forest
Wetlands	Atlantic Coastal Plain Northern Pondshore
Wetlands	Atlantic Coastal Plain Peatland Pocosin
Wetlands	Atlantic Coastal Plain Sandhill Seep
Wetlands	Atlantic Coastal Plain Streamhead Seepage Swamp, Pocosin, and Baygall
Wetlands	Central Appalachian Floodplain - Herbaceous Modifier
Wetlands	Central Appalachian Riparian - Herbaceous Modifier
Wetlands	Central Florida Herbaceous Pondshore
Wetlands	Central Florida Herbaceous Seep
Wetlands	Central Interior Highlands and Appalachian Sinkhole and Depression Pond
Wetlands	East Gulf Coastal Plain Interior Shrub Bog
Wetlands	East Gulf Coastal Plain Jackson Plain Dry Flatwoods - Scrub/Shrub Understory Modifier
Wetlands	East Gulf Coastal Plain Large River Floodplain Forest - Herbaceous Modifier
Wetlands	East Gulf Coastal Plain Near-Coast Pine Flatwoods - Scrub/Shrub Understory Modifier
Wetlands	East Gulf Coastal Plain Northern Depression Pondshore
Wetlands	East Gulf Coastal Plain Northern Seepage Swamp
Wetlands	East Gulf Coastal Plain Southern Depression Pondshore
Wetlands	Floridian Highlands Freshwater Marsh
Wetlands	Lower Mississippi River Bottomland Depressions - Herbaceous Modifier
Wetlands	North-Central Appalachian Seepage Fen
Wetlands	South Florida Freshwater Slough and Gator Hole
Wetlands	South Florida Willow Head
Wetlands	South-Central Interior Large Floodplain - Herbaceous Modifier
Wetlands	Southern and Central Appalachian Bog and Fen
Wetlands	Southern Appalachian Seepage Wetland
Wetlands	Southern Coastal Plain Herbaceous Seepage Bog
Wetlands	Southern Coastal Plain Nonriverine Basin Swamp
Wetlands	Southern Coastal Plain Seepage Swamp and Baygall
Wetlands	Southern Piedmont Large Floodplain Forest - Herbaceous Modifier
Wetlands	Southern Piedmont Seepage Wetland
Wetlands	Southern Piedmont/Ridge and Valley Upland Depression Swamp
Wetlands	Western Highland Rim Seepage Fen

**CITATIONS:** American Ornithologists' Union (AOU), Committee on Classification and Nomenclature. 1983. Check-list of North American Birds. Sixth Edition. American Ornithologists' Union, Allen Press, Inc., Lawrence, Kansas.

American Ornithologists' Union. 1983. Checklist of North American birds. 6th ed. Allen Press:Lawrence, KS. 877 p.

Ball, R. M., et al. 1988. Phylogeographic population structure of red-winged blackbirds assessed by mitochondrial DNA. *Proc. Nat. Acad. Sci.* 85:1558-1562.

Bureau of Land Management. Life History Summaries.

Clark, R. G., and P. J. Weatherhead. 1987. Influence of population size on habitat use by territorial male red-winged blackbirds in agricultural landscapes. *Auk* 104:311-315.

Clark, R. G., et al. 1986. Numerical responses of red-winged blackbird populations to changes in regional land-use patterns. *Can. J. Zool.* 64:1944-1950.

Conover, M. R., and R. A. Dolbeer, 1989. Reflecting tapes fail to reduce blackbird damage to ripening cornfields. *Wildl. Soc. Bull.* 17:441-443.

Cummings, J. L., J. L. Guarino, and C. E. Knittle. 1989. Chronology of blackbird damage to sunflowers. *Wildl. Soc. Bull.* 17:50-52.

Dolbeer, R. A. 1980. Blackbirds and corn in Ohio. U.S. Fish and Wildl. Serv., Resource Publ. 136. 18 pp.

Dolbeer, R. A. 1990. Ornithology and integrated pest management:red-winged blackbirds *AGELAIUS PHOENICEUS* and corn. *Ibis* 132:309-322.

Dolbeer, R. A., et al. 1991. Efficacy of two gas cartridge formulations in killing woodchucks in burrows. *Wildl. Soc. Bull.* 19:200-204.

- Dolbeer, R. A., P. P. Woronecki, and J. R. Mason. 1988. Aviary and field evaluations of sweet corn resistance to damage by blackbirds. *J. Am. Soc. Hortic. Sci.* 113:460-464.
- Ehrlich, P.R., D.S. Dobkin, and D. Wheye. 1988. *The birder's handbook: a field guide to the natural history of North American birds.* Simon and Shuster, Inc., New York. xxx + 785 pp.
- Gavin, T. A., R. A. Howard, and B. May. 1991. Allozyme variation among breeding populations of red-winged blackbirds: the California conundrum. *Auk* 108:602-611.
- Glahn, J.F., et al. 1991. Impact of roost control on local urban and agricultural blackbird problems. *Wildlife Society Bulletin* 19:511-522.
- Harrison, C. 1978. *A field guide to the nests, eggs and nestlings of North American birds.* Collins, Cleveland, Ohio.
- Mah, J., and G. L. Nuechterlein. 1991. Feeding behavior of red-winged blackbirds on bird-resistant sunflowers. *Wildl. Soc. Bull.* 19:39-46.
- Nelms, C. O., et al. 1994. Population estimates of breeding blackbirds in North Dakota, 1967, 1981-1982, and 1990. *Am. Midl. Nat.* 132:256-263.
- Nero, R. W. 1984. *Redwings.* Smithsonian Institution Press, Blue Ridge Summit, PA. 160 pp.
- Nicholson CP. 1997. *Atlas of the breeding birds of Tennessee.* Knoxville: University of Tennessee Press.
- Orians, G. H. 1980. Some adaptations of marsh-nesting blackbirds. *Princeton Univ. Press.* 295 pp.
- Orians, G. H. 1985. *Blackbirds of the Americas.* Univ. Washington Press, Seattle.
- Orians, G.H., Christman. 1968. Behavior of redwinged, tri-colored, and yellow headed blackbirds. *Berkeley.* 301 pp.
- Potter, E. F., J. F. Parnell, and R. P. Teulings. 1980. *Birds of the Carolinas.* Univ. North Carolina Press, Chapel Hill. 408 pp.
- Skutch, A.F. 1996. *Orioles, blackbirds, and their kin. A natural history.* Tuscon: University of Arizona Press. 291p.
- Stiles, F.G., and A.F. Skutch. 1989. *A guide to the birds of Costa Rica.* Comstock Publ. Associates, Cornell University Press, Ithaca, New York. 511 pp.
- Straub, R. W. 1989. Red-winged blackbird damage to sweet corn in relation to infestations of European corn borer (*Lepidoptera:Pyralidae*). *J. Econ. Entomol.* 82:1406-1410.
- Terres, J.K. 1980. *The Audubon Society encyclopedia of North American birds.* Alfred A. Knopf, New York.

---

For more information:: SE-GAP Analysis Project / BaSIC  
 127 David Clark Labs  
 Dept. of Biology, NCSU  
 Raleigh, NC 27695-7617  
 (919) 513-2853  
[www.basic.ncsu.edu/segap](http://www.basic.ncsu.edu/segap)

Compiled: 15 September 2011

This data was compiled and/or developed by the Southeast GAP Analysis Project at The Biodiversity and Spatial Information Center, North Carolina State University.