



# SOUTHEAST GAP ANALYSIS PROJECT



## Species Modeling Report

### Sandhill Crane

*Grus canadensis*

Taxa: Avian

Order: Gruiformes

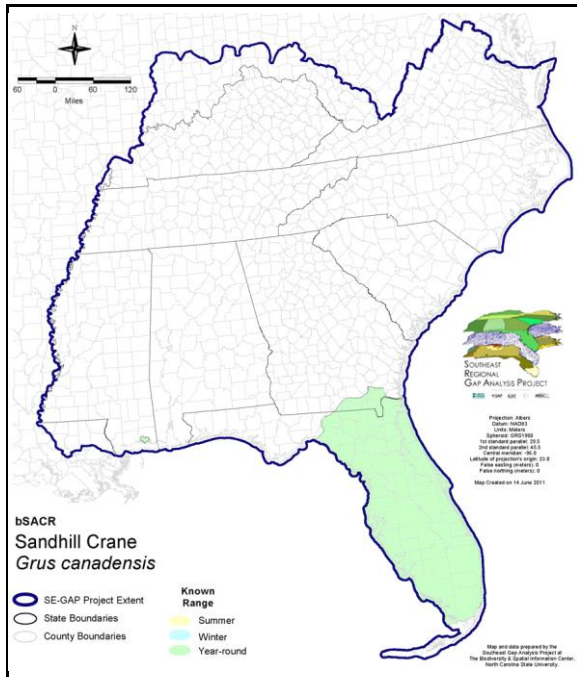
Family: Gruidae

SE-GAP Spp Code: **bSACR**

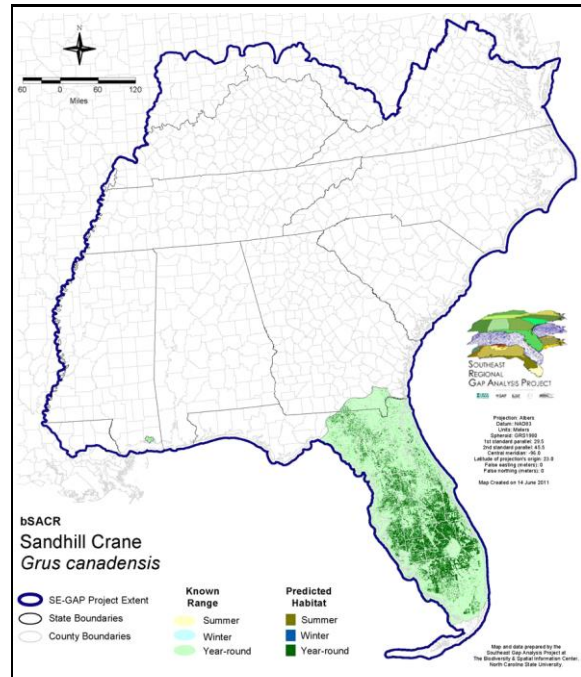
ITIS Species Code: 176177

NatureServe Element Code: ABNMK01010

#### KNOWN RANGE:



#### PREDICTED HABITAT:



Range Map Link: [http://www.basic.ncsu.edu/segap/datazip/maps/SE\\_Range\\_bSACR.pdf](http://www.basic.ncsu.edu/segap/datazip/maps/SE_Range_bSACR.pdf)

Predicted Habitat Map Link: [http://www.basic.ncsu.edu/segap/datazip/maps/SE\\_Dist\\_bSACR.pdf](http://www.basic.ncsu.edu/segap/datazip/maps/SE_Dist_bSACR.pdf)

GAP Online Tool Link: <http://www.gapservice.ncsu.edu/segap/segap/index2.php?species=bSACR>

Data Download: [http://www.basic.ncsu.edu/segap/datazip/region/vert/bSACR\\_se00.zip](http://www.basic.ncsu.edu/segap/datazip/region/vert/bSACR_se00.zip)

#### PROTECTION STATUS:

Reported on March 14, 2011

Federal Status: ---

State Status: ID (G), ID (G), IL (RT), IN (SSC), KY (N), MN (NON), NV (YES), NY (PB), OH (E), UT (None), UT (None), WA (E), BC (3 (2005)), BC (3 (2005)), QC (Non suivie)

NS Global Rank: G5

NS State Rank: AK (S5B), AL (SHB,S2N), AL (SHB,S2N), AR (SNA), AZ (S3N), CA (SNRB,SNRN), CO (S3B,S4N), DE (SNA), FL (SNRB,SNRN), GA (S2), IA (S1B,S1N), ID (S3B), ID (S3B), IL (S3), IN (S2B,S1N), KS (S2N), KY (SNA), LA (S1N), MA (S1N), MD (SNA), ME (SNA), MI (S4), MN (S4B,SNRM), MO (SU), MS (S1), MT (S5B,S2N), NC (SNA), ND (SU), NE (S3), NJ (SNA), NM (S4N), NV (S3B), NY (SNA), OH (S1), OK (S2N), OR (S3), PA (SNA), SC (SNRN), SD (SNA), TN (S3N), TX (S5), UT (S3?B), UT (S3?B), VA (SNA), VT (SNA), WA (S1B,S3N), WI (S4B), WI (S4B), WY (S3B,S5N), AB (S4), BC (S4B), BC (S4B), LB (SNA), MB (S5B), MB (S5B), NB (SNA), NF (SNA), NS (SNA), NT (SNRB), NU (SNRB), ON (S5B), PE (SNA), QC (S3S4B), SK (S2B,S4M), YT (S3B,S4M)

**SUMMARY OF PREDICTED HABITAT BY MANAGMENT AND GAP PROTECTION STATUS:**

	US FWS		US Forest Service		Tenn. Valley Author.		US DOD/ACOE	
	ha	%	ha	%	ha	%	ha	%
Status 1	11,929.9	< 1	0.0	0	0.0	0	0.0	0
Status 2	95.9	< 1	427.5	< 1	0.0	0	0.0	0
Status 3	1.8	< 1	3,772.1	< 1	0.0	0	18,613.4	< 1
Status 4	0.4	< 1	0.0	0	0.0	0	0.0	0
Total	12,028.0	< 1	4,199.6	< 1	0.0	0	18,613.4	< 1
	US Dept. of Energy		US Nat. Park Service		NOAA		Other Federal Lands	
	ha	%	ha	%	ha	%	ha	%
Status 1	0.0	0	16,381.4	< 1	0.0	0	2,525.5	< 1
Status 2	0.0	0	827.3	< 1	196.6	< 1	5.5	< 1
Status 3	0.0	0	65,094.2	2	0.0	0	0.0	0
Status 4	0.0	0	0.0	0	0.0	0	0.0	0
Total	0.0	0	82,302.9	3	196.6	< 1	2,531.0	< 1
	Native Am. Reserv.		State Park/Hist. Park		State WMA/Gameland		State Forest	
	ha	%	ha	%	ha	%	ha	%
Status 1	0.0	0	0.0	0	0.0	0	0.0	0
Status 2	0.0	0	17.0	< 1	105,765.8	3	0.0	0
Status 3	2.8	< 1	239,639.9	8	1.5	< 1	34,026.1	1
Status 4	0.0	0	0.0	0	0.0	0	0.0	0
Total	2.8	< 1	239,657.0	8	105,767.4	3	34,026.1	1
	State Coastal Reserve		ST Nat.Area/Preserve		Other State Lands		Private Cons. Easemt.	
	ha	%	ha	%	ha	%	ha	%
Status 1	0.0	0	0.0	0	0.0	0	0.0	0
Status 2	13.8	< 1	1,818.0	< 1	0.0	0	1,021.9	< 1
Status 3	0.0	0	5,074.9	< 1	2,248.2	< 1	54,339.0	2
Status 4	0.0	0	0.0	0	82.6	< 1	< 0.1	< 1
Total	13.8	< 1	6,892.9	< 1	2,330.8	< 1	55,361.0	2
	Private Land - No Res.		Water		Overall Total			
	ha	%	ha	%	ha	%		
Status 1	0.0	0	0.0	0	30,836.8	< 1		
Status 2	0.0	0	0.0	0	110,189.3	4		
Status 3	3.7	< 1	0.0	0	422,817.7	14		
Status 4	2,555,527.1	82	11,578.5	< 1	2,567,188.3	82		
Total	2,555,530.7	82	11,578.5	< 1	3,131,032.0	100		

GAP Status 1: An area having permanent protection from conversion of natural land cover and a mandated management plan in operation to maintain a natural state within which disturbance events (of natural type, frequency, and intensity) are allowed to proceed without interference or are mimicked through management.

GAP Status 2: An area having permanent protection from conversion of natural land cover and a mandated management plan in operation to maintain a primarily natural state, but which may receive use or management practices that degrade the quality of existing natural communities.

GAP Status 3: An area having permanent protection from conversion of natural land cover for the majority of the area, but subject to extractive uses of either a broad, low-intensity type or localized intense type. It also confers protection to federally listed endangered and threatened species throughout the area.

GAP Status 4: Lack of irrevocable easement or mandate to prevent conversion of natural habitat types to anthropogenic habitat types. Allows for intensive use throughout the tract. Also includes those tracts for which the existence of such restrictions or sufficient information to establish a higher status is unknown.

**PREDICTED HABITAT MODEL(S):**

**Year-round Model:**

Habitat Description: Breeding habitat is considered as open grasslands, marshes, marshy edges of lakes and ponds, river banks (Terres 1980). Often feeds and rests in fields and agricultural lands. Sandhill cranes are permanent residents of Georgia only in the Okefenokee Swamp. Breeding habitat consists of open marshes or prairies surrounded by shrubs or forest. They like locations with frequent pools or small ponds (GA).

Nests on the ground or in shallow water on open tundra, large marshes, or wet forest meadows. Exhibits high fidelity to breeding territories (see Littlefield 1995, Wilson Bull. 107:766).

Quoted directly from existing state habitat notes - K. Cook, 16Feb05

**Hydrography Mask:**

Freshwater Only

Utilizes open water features with buffer of 1000m from selected water features.

Utilizes wet vegetation features with buffers of 1000m from and unlimited into selected vegetation features.

**Selected Map Units:**

Functional Group	Map Unit Name
Anthropogenic	Pasture/Hay
Anthropogenic	Row Crop
Coastal Dune & Freshwater Wetland	Atlantic and Gulf Coastal Plain Interdunal Wetland
Freshwater Tidal Marsh & Wetland	Atlantic Coastal Plain Central Fresh-Oligohaline Tidal Marsh
Freshwater Tidal Marsh & Wetland	Florida Big Bend Fresh-Oligohaline Tidal Marsh
Prairie	Florida Dry Prairie
Prairie	Panhandle Florida Limestone Glade
Wetlands	Atlantic Coastal Plain Sandhill Seep
Wetlands	Central Florida Herbaceous Pondshore
Wetlands	Central Florida Herbaceous Seep
Wetlands	East Gulf Coastal Plain Southern Depression Pondshore
Wetlands	East Gulf Coastal Plain Treeless Savanna and Wet Prairie
Wetlands	Floridian Highlands Freshwater Marsh
Wetlands	South Florida Dwarf Cypress Savanna
Wetlands	South Florida Freshwater Slough and Gator Hole
Wetlands	South Florida Wet Marl Prairie
Wetlands	Southern Coastal Plain Herbaceous Seepage Bog

**Selected Secondary Map Units within 60m of Primary Map Units:**

Functional Group	Map Unit Name
Wetlands	Southern Coastal Plain Nonriverine Cypress Dome
Wetlands	Atlantic Coastal Plain Streamhead Seepage Swamp, Pocosin, and Baygall
Wetlands	Atlantic Coastal Plain Nonriverine Swamp and Wet Hardwood Forest - Taxodium/Nyssa Modifier
Wetlands	Southern Coastal Plain Nonriverine Basin Swamp
Wetlands	Southern Coastal Plain Hydric Hammock
Wetlands	Southern Coastal Plain Seepage Swamp and Baygall
Wetlands	Atlantic Coastal Plain Southern Wet Pine Savanna and Flatwoods
Wetlands	South Florida Cypress Dome
Wetlands	South Florida Bayhead Swamp
Wetlands	South Florida Willow Head
Wetlands	South Florida Pond-Apple/Popash Slough

**CITATIONS:** American Ornithologists' Union (AOU), Committee on Classification and Nomenclature. 1983. Check-list of North American Birds. Sixth Edition. American Ornithologists' Union, Allen Press, Inc., Lawrence, Kansas.

Biosystems Analysis, Inc. 1989. Endangered Species Alert Program Manual:Species Accounts and Procedures. Southern California Edison Environmental Affairs Division.

- Buller, R. J. 1979. Lesser and Canadian sandhill crane populations, age structure, and harvest. U.S. Dept. Int., FWS. Special Scientific Report-Wildlife No. 221. 10 pp.
- California Department of Fish and Game. 1990. 1989 annual report on the status of California's state listed threatened and endangered plants and animals. 188 pp.
- Fish and Wildlife Service. 1980. Selected vertebrate endangered species of the seacoast of the United States- Mississippi sandhill crane. FWS/OBS-80/01.52, Slidell.
- Folk, M. J., and T. C. Tacha. 1990. Sandhill crane roost site characteristics in the North Platte River Valley. *J. Wildl. Manage.* 54:480-486.
- Godfrey, W.E. 1966. The birds of Canada. National Museums of Canada. Ottawa. 428 pp.
- Harrison, C. 1978. A field guide to the nests, eggs and nestlings of North American birds. Collins, Cleveland, Ohio.
- Herkert, J. R., editor. 1992. Endangered and threatened species of Illinois:status and distribution. Vol. 2:Animals. Illinois Endangered Species Protection Board. iv + 142 pp.
- Iverson, G. C., P. A. Vohs, and T. C. Tacha. 1987. Habitat use by mid-continent sandhill cranes during spring migration. *J. Wildl. Manage.* 51:448-458.
- Johnsgard, P. A. 1991. Crane music:a natural history of American cranes. Smithsonian Inst. Press, Washington, D.C. 136 pp.
- Johnsgard, P.A. 1983. Cranes of the world. Indiana Univ. Press, Bloomington. xiii + 258 pp.
- Johnson, D. H. 1979. Modeling sandhill crane population dynamics. U.S. Dept. Int., FWS. Special Scientific Report- Wildlife No. 222. 10 pp.
- Johnson, S.R., and D.R. Herter. 1989. The birds of the Beaufort Sea. BP Exploration (Alaska) Inc., Anchorage, Alaska. 372 pp.
- Kessel, B. 1984. Migration of sandhill cranes, *GRUS CANADENSIS*, in east-central Alaska, with routes through Alaska and western Canada. *Can. Field-Nat.* 98:279-292.
- Krajewski, C., and J. W. Fetzner, Jr. 1994. Phylogeny of cranes (Gruiformes:Gruidae) based on cytochrome-B DNA sequences. *Auk* 111:351-365.
- Krapu, G. L., et al. 1985. Fat deposition and usage by artic-nesting sandhill cranes during spring. *Auk* 102:362-368.
- Layne, J. N. 1983. Productivity of sandhill cranes in south central Florida. *J. Wildl. Manage.* 47:178-185.
- Lewis, J. C. 1974. Ecology of the sandhill crane in the southeastern central flyway. Ph.D. thesis, University Microfilms. 213 pp.
- Littlefield, C. D. 1995. Demographics of a declining flock of greater sandhill cranes in Oregon. *Wilson Bulletin* 107:667-674.
- Littlefield, C. D., and D. G. Paullin. 1990. Effects of land management on nesting success of sandhill cranes in Oregon. *Wildl. Soc. Bull.* 18:63-65.
- Mclvor, D. E., and M. R. Conover. 1994. Habitat preference and diurnal use among greater sandhill cranes. *Great Basin Nat.* 54:329-334.
- Morkill, A. E., and S. H. Anderson. 1991. Effectiveness of marking powerlines to reduce sandhill crane collisions. *Wildlife Society Bull.* 19:442-449.
- National Geographic Society (NGS). 1983. Field guide to the birds of North America. National Geographic Society, Washington, D.C.
- Nesbitt, S. A. 1988. Nesting, re-nesting, and manipulating nesting of Florida sandhill cranes. *J. Wildl. Manage.* 52:758-763.
- Nesbitt, S. A., and K. S. Williams. 1990. Home range and habitat use of Florida sandhill cranes. *J. Wildl. Manage.* 54:92-96.
- Norling, B. S., S. H. Anderson, and W. A. Hubert. 1992. Roost sites used by sandhill crane staging along the Platte River, Nebraska. *Great Basin Nat.* 52:253-261.
- Pogson, T. H., and S. M. Lindstedt. 1991. Distribution and abundance of large sandhill cranes, *GRUS CANADENSIS*, wintering in California's Central Valley. *Condor* 93:266-278.
- Sparling, D. W., and G. L. Krapu. 1994. Communal roosting and foraging behavior of staging sandhill cranes. *Wilson Bull.* 106:62-77.
- Tacha, T. C., P. A. Vohs, and G. C. Iverson. 1987. Time and energy budgets of sandhill cranes from mid-continental North America. *J. Wildl. Manage.* 51:440-448.
- Terres, J.K. 1980. The Audubon Society encyclopedia of North American birds. Alfred A. Knopf, New York.
- U.S. Fish & Wildl. Serv. 1988. SEIS 88. Final supplemental environmental impact statement:issuance of annual regulations permitting the sport hunting of migratory birds. x + 340 pp.

Walkinshaw, L. 1949. The sandhill cranes. Cranbrook Institute of Science. 1949. 202 pp.

Walkinshaw, L. H. 1973. Cranes of the world. Winchester Press, New York.

Wheeler, R. H., and J. C. Lewis. 1972. Trapping techniques for sandhill crane studies in the Platte River Valley. U.S. Fish & Wildl. Serv. Res. Publ. 107:1-19.

Zwank, P. J., and C. D. Wilson. 1987. Survival of captive, parent-reared Mississippi sandhill cranes released on a refuge. Conservation Biology 1:165-168.

---

For more information:: SE-GAP Analysis Project / BaSIC  
127 David Clark Labs  
Dept. of Biology, NCSU  
Raleigh, NC 27695-7617  
(919) 513-2853  
[www.basic.ncsu.edu/segap](http://www.basic.ncsu.edu/segap)

Compiled: 15 September 2011

This data was compiled and/or developed  
by the Southeast GAP Analysis Project at  
The Biodiversity and Spatial Information  
Center, North Carolina State University.