



SOUTHEAST GAP ANALYSIS PROJECT



Species Modeling Report

Snowy Plover

Charadrius alexandrinus

Taxa: Avian

Order: Charadriiformes

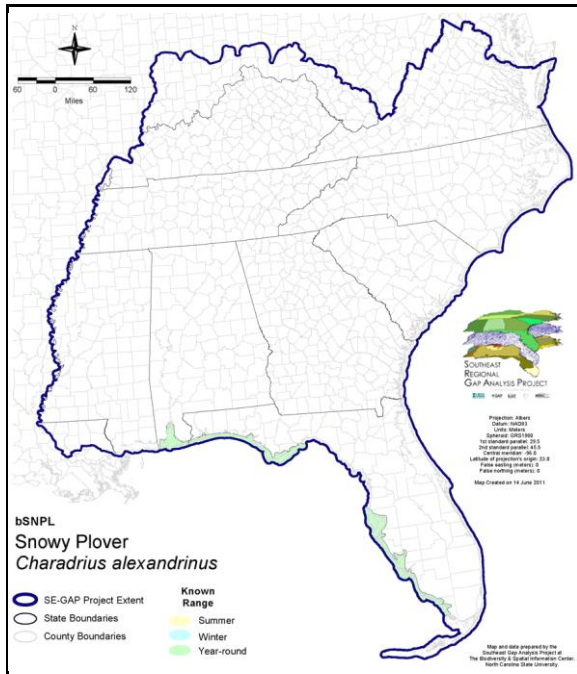
Family: Charadriidae

SE-GAP Spp Code: **bSNPL**

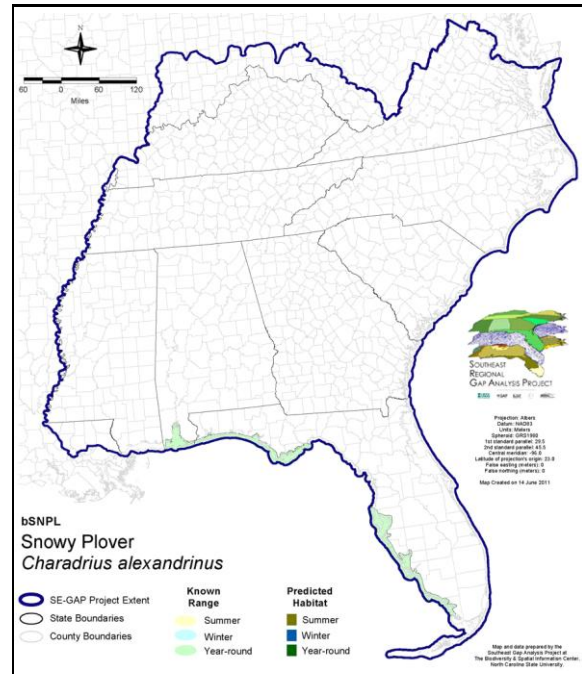
ITIS Species Code: 176510

NatureServe Element Code: ABNNB03030

KNOWN RANGE:



PREDICTED HABITAT:



Range Map Link: http://www.basic.ncsu.edu/segap/datazip/maps/SE_Range_bSNPL.pdf

Predicted Habitat Map Link: http://www.basic.ncsu.edu/segap/datazip/maps/SE_Dist_bSNPL.pdf

GAP Online Tool Link: <http://www.gapservice.ncsu.edu/segap/segap/index2.php?species=bSNPL>

Data Download: http://www.basic.ncsu.edu/segap/datazip/region/vert/bSNPL_se00.zip

PROTECTION STATUS:

Reported on March 14, 2011

Federal Status: ---

State Status: AL (SP), AZ (WSC), FL (ST), ID (P), KS (T), MS (LE), MS (LE), NV (YES), OK (Category II), OR (LT), UT (None), WA (E), BC (8 (2005))

NS Global Rank: G4

NS State Rank: AK (SNA), AL (S1B,S2N), AR (SNA), AZ (S2), CA (SNR), CO (S1B), CO (S1B), FL (S1), ID (SNA), IL (SNA), IN (SNA), KS (S1B), LA (S1B,S2N), MI (SNA), MS (S2), MS (S2), MT (SNA), NC (SNA), NE (S1), NM (S2B,S2N), NV (S3B), OK (S3B), OR (S2), PA (SNA), SD (S1), TN (SNA), TX (S3B), UT (S3?B), VA (SNA), WA (S1), WI (SNA), WY (SNA), AB (SNA), BC (SNA), ON (SNA), SK (S1B), YT (SNA)

SUMMARY OF PREDICTED HABITAT BY MANAGMENT AND GAP PROTECTION STATUS:

	US FWS		US Forest Service		Tenn. Valley Author.		US DOD/ACOE	
	ha	%	ha	%	ha	%	ha	%
Status 1	3,093.3	7	0.0	0	0.0	0	0.0	0
Status 2	70.8	< 1	0.0	0	0.0	0	0.0	0
Status 3	0.0	0	0.0	0	0.0	0	1,805.0	4
Status 4	0.0	0	0.0	0	0.0	0	0.0	0
Total	3,164.1	7	0.0	0	0.0	0	1,805.0	4
	US Dept. of Energy		US Nat. Park Service		NOAA		Other Federal Lands	
	ha	%	ha	%	ha	%	ha	%
Status 1	0.0	0	25.3	< 1	0.0	0	0.0	0
Status 2	0.0	0	3,282.0	8	1,636.3	4	0.0	0
Status 3	0.0	0	0.0	0	0.0	0	0.0	0
Status 4	0.0	0	0.0	0	0.0	0	0.0	0
Total	0.0	0	3,307.8	8	1,636.3	4	0.0	0
	Native Am. Reserv.		State Park/Hist. Park		State WMA/Gameland		State Forest	
	ha	%	ha	%	ha	%	ha	%
Status 1	0.0	0	1.8	< 1	0.0	0	0.0	0
Status 2	0.0	0	0.0	0	3,060.7	7	0.0	0
Status 3	0.0	0	2,996.6	7	214.7	< 1	1,122.8	3
Status 4	0.0	0	0.0	0	421.7	< 1	0.0	0
Total	0.0	0	2,998.4	7	3,697.1	9	1,122.8	3
	State Coastal Reserve		ST Nat.Area/Preserve		Other State Lands		Private Cons. Easemt.	
	ha	%	ha	%	ha	%	ha	%
Status 1	0.0	0	333.0	< 1	0.0	0	0.0	0
Status 2	293.2	< 1	198.6	< 1	0.0	0	0.0	0
Status 3	0.0	0	0.0	0	0.0	0	0.0	0
Status 4	0.0	0	0.0	0	0.0	0	0.0	0
Total	293.2	< 1	531.6	1	0.0	0	0.0	0
	Private Land - No Res.		Water		Overall Total			
	ha	%	ha	%	ha	%	ha	%
Status 1	0.0	0	0.0	0	3,453.4 8			
Status 2	0.0	0	0.0	0	8,541.7 20			
Status 3	0.0	0	0.0	0	6,139.1 14			
Status 4	22,606.4	53	1,096.3	3	24,546.6 58			
Total	22,606.4	53	1,096.3	3	42,680.8 100			

GAP Status 1: An area having permanent protection from conversion of natural land cover and a mandated management plan in operation to maintain a natural state within which disturbance events (of natural type, frequency, and intensity) are allowed to proceed without interference or are mimicked through management.

GAP Status 2: An area having permanent protection from conversion of natural land cover and a mandated management plan in operation to maintain a primarily natural state, but which may receive use or management practices that degrade the quality of existing natural communities.

GAP Status 3: An area having permanent protection from conversion of natural land cover for the majority of the area, but subject to extractive uses of either a broad, low-intensity type or localized intense type. It also confers protection to federally listed endangered and threatened species throughout the area.

GAP Status 4: Lack of irrevocable easement or mandate to prevent conversion of natural habitat types to anthropogenic habitat types. Allows for intensive use throughout the tract. Also includes those tracts for which the existence of such restrictions or sufficient information to establish a higher status is unknown.

PREDICTED HABITAT MODEL(S):

Year-round Model:

Habitat Description: On Gulf Coast of Florida, most nests are located along sandy beaches; a few on little-used paved parking lots at Eglin Air Force Base, Okaloosa County. On the coast, feeds along beaches, tide flats, salt flats, and salt ponds. Forages above and below mean high-water line gathering food from sand surface (Page et al. 1995). M. Rubino, 28dec04.

Selected Map Units:

Functional Group	Map Unit Name
Beach	Florida Panhandle Beach Vegetation
Beach	South Florida Shell Hash Beach
Beach	Southeast Florida Beach
Beach	Southwest Florida Beach
Beach	Unconsolidated Shore (Beach/Dune)
Brackish Tidal Marsh & Wetland	Florida Big Bend Salt-Brackish Tidal Marsh
Brackish Tidal Marsh & Wetland	Mississippi Sound Salt and Brackish Tidal Marsh
Brackish Tidal Marsh & Wetland	Southwest Florida Perched Barriers Salt Swamp and Lagoon - Marsh Modifier
Coastal Dune & Freshwater Wetland	Atlantic and Gulf Coastal Plain Interdunal Wetland
Coastal Dune & Freshwater Wetland	East Gulf Coastal Plain Dune and Coastal Grassland
Coastal Dune & Freshwater Wetland	Southwest Florida Dune and Coastal Grassland
Freshwater Tidal Marsh & Wetland	Florida Big Bend Fresh-Oligohaline Tidal Marsh

- CITATIONS:** American Ornithologists' Union (AOU), Committee on Classification and Nomenclature. 1983. Check-list of North American Birds. Sixth Edition. American Ornithologists' Union, Allen Press, Inc., Lawrence, Kansas.
- Bent, A.C. 1929. Life histories of North American shore birds. Part II. U.S. National Museum Bulletin No. 146. Washington, D.C.
- Ehrlich, P.R., D.S. Dobkin, and D. Wheye. 1992. Birds in jeopardy: the imperiled and extinct birds of the United States and Canada, including Hawaii and Puerto Rico. Stanford University Press, Stanford, California. 259 pp.
- Gorman L. R., and S. M. Haig. 2002. Distribution and abundance of Snowy Plovers in eastern North America, the Caribbean, and the Bahamas. *Journal of Field Ornithology*. 73:38-52.
- Harrison, C. 1978. A field guide to the nests, eggs and nestlings of North American birds. Collins, Cleveland, Ohio.
- Harrison, H.H. 1979. A field guide to western birds' nests. Houghton Mifflin Company, Boston. 279 pp.
- Hill, L. A., and L. G. Talent. 1990. Effects of capture, handling, banding, and radio-marking on breeding least terns and snowy plovers. *J. Field Ornithology* 61:310-319.
- Jacobs, R. A. (Wilson). 1986. Snowy plover (CHARADRIUS ALEXANDRINUS): section 4.4.1, US Army Corps of Engineers Wildlife Resources Management Manual. Tech. Rep. EL-86-54. US Army Engineer Waterways Expt. Sta., Vicksburg, Miss.
- National Geographic Society (NGS). 1983. Field guide to the birds of North America. National Geographic Society, Washington, D.C.
- Page, G. W., et al. 1983. Spacing out at Mono Lake: breeding success, nest density, and predation in the snowy plover. *Auk* 100:13-24.
- Page, G. W., et al. 1991. Distribution and abundance of the snowy plover on its western North American breeding grounds. *J. Field Ornithology* 62:245-255.
- Page, G. W., L. E. Stenzel, and C. A. Ribic. 1985. Nest site selection and clutch predation in the snowy plover. *Auk* 102:347-353.
- Page, G. W., M. A. Stern, and P. W. C. Paton. 1995. Differences in wintering areas of snowy plovers from inland breeding sites in western North America. *Condor* 97:258-262.
- Page, G. W., P. L. Quinn, and J. C. Warriner. 1989. Comparison of the breeding of hand- and wild-reared snowy plovers. *Conservation Biology* 3:198-201.
- Page, G. W.; J. S. Warriner; J. C. Warriner, and P. W. C. Paton. Snowy Plover. *The Birds of North America*. A. Poole, P. Stettenheim, and F. Gill ed. Philadelphia: The Academy of Natural Sciences; Washington, D.C.: The American Ornithologists Union; 1995
- Paton, P. W. C. 1990. Status and nesting ecology of the snowy plover at Great Salt Lake--1990. *Utah Birds* 6:49-66.
- Paton, P. W. C. 1994. Survival estimates for snowy plovers breeding at Great Salt Lake, Utah. *Condor* 96:1106-1109.

Paton, P. W. C. 1995. Breeding biology of snowy plovers at Great Salt Lake, Utah. *Wilson Bulletin* 107:275-288.

Paton, P. W. C., and T. C. Edwards, Jr. 1991. Nesting ecology of the snowy plover at Great Salt Lake, Utah--1991 breeding season. Progress Report, Contract No. 90-2028, Utah Cooperative Fish and Wildlife Research Unit, Utah State University, Logan. 28 pp.

Paton, P. W., C. Kneedy, and E. Sorensen. 1992. Chronology of shorebird and ibis use of selected marshes at Great Salt Lake. *Utah Birds* 8(1):1-19.

Raffaele, H.A. 1983. A guide to the birds of Puerto Rico and the Virgin Islands. Fondo Educativo Interamericano, San Juan, Puerto Rico. 255 pp.

Terres, J.K. 1980. The Audubon Society encyclopedia of North American birds. Alfred A. Knopf, New York.

U. S. Fish and Wildlife Service, Office of Migratory Bird Management. 1987. Migratory nongame birds of management concern in the United States:the 1987 list.

U.S. Fish and Wildlife Service. 1985. Management guidelines for the western snowy plover. U.S. Fish and Wildlife Service, Portland, OR. 17 pp.

Wilson, R. A. 1980. Snowy plover nesting ecology on the Oregon coast. M.S. thesis, Oregon State Univ., Corvallis.

For more information:: SE-GAP Analysis Project / BaSIC
127 David Clark Labs
Dept. of Biology, NCSU
Raleigh, NC 27695-7617
(919) 513-2853
www.basic.ncsu.edu/segap

Compiled: 15 September 2011

This data was compiled and/or developed
by the Southeast GAP Analysis Project at
The Biodiversity and Spatial Information
Center, North Carolina State University.