



SOUTHEAST GAP ANALYSIS PROJECT



Species Modeling Report

Tree Swallow

Tachycineta bicolor

Taxa: Avian

Order: Passeriformes

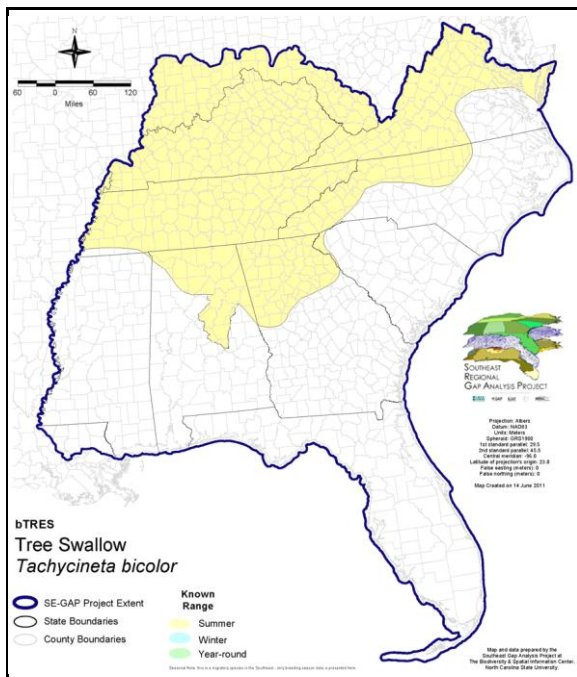
Family: Hirundinidae

SE-GAP Spp Code: **bTRES**

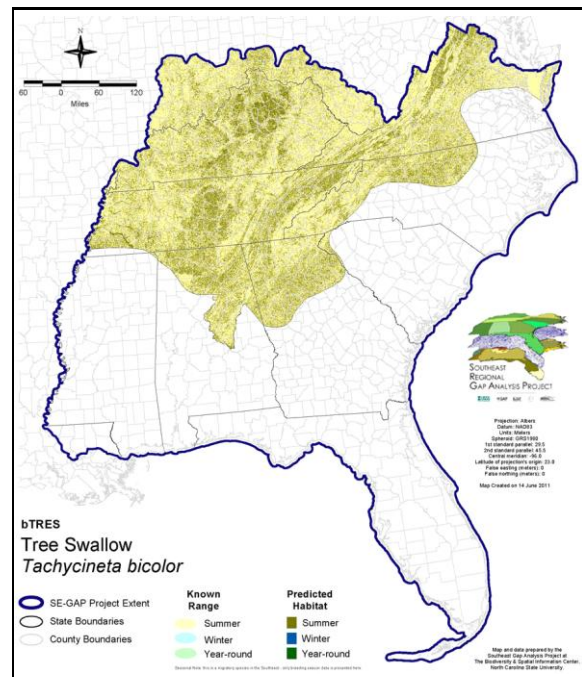
ITIS Species Code: 178431

NatureServe Element Code: ABPAU03010

KNOWN RANGE:



PREDICTED HABITAT:



Range Map Link: http://www.basic.ncsu.edu/segap/datazip/maps/SE_Range_bTRES.pdf

Predicted Habitat Map Link: http://www.basic.ncsu.edu/segap/datazip/maps/SE_Dist_bTRES.pdf

GAP Online Tool Link: <http://www.gapservice.ncsu.edu/segap/segap/index2.php?species=bTRES>

Data Download: http://www.basic.ncsu.edu/segap/datazip/region/vert/bTRES_se00.zip

PROTECTION STATUS:

Reported on March 14, 2011

Federal Status: ---

State Status: ID (P), ID (P), KY (N), ME (SC), NJ (S/S), NV (YES), NY (PB), RI (Not Listed), UT (None), BC (4 (2005)), BC (4 (2005)), QC (Non suivie)

NS Global Rank: G5

NS State Rank: AK (S5B), AL (S5N), AL (S5N), AR (S4B,S5N), AZ (S3), CA (S5), CO (S5), CT (S5B), CT (S5B), DC (S1B), DC (S1B), DE (S5B), FL (SNRN), GA (S5), IA (S5B,S5N), ID (S5B), ID (S5B), IL (S5), IN (S4B), KS (S1B), KY (S3S4B), LA (S5N), MA (S5B), MD (S4B), ME (S5B), MI (S5), MN (SNRB), MO (SNRB), MS (SNA), MT (S5B), MT (S5B), NC (S3B,S4N), ND (SNRB), NE (SNRN), NH (S5B), NJ (S4B), NM (S3B,S4N), NV (S5B), NY (S5), OH (S5), OK (S2N), OR (S5), PA (S5B), RI (S5B), SC (SNA), SD (S4B), SD (S4B), TN (S4), TX (S3B,S4N), UT (S4B), VA (S5), VT (S5B), VT (S5B), WA (S5B), WA (S5B), WI (S5B), WI (S5B), WV (S5B), WY (S5B,S5N), AB (S5), BC (S4S5B), BC (S4S5B), LB (S5B), MB (S5B), MB (S5B), NB (S5B), NF (S5B), NS (S5B), NT (SNRB), NU (SNRB), ON (S4B), PE (S5B), QC (S5B), SK (S5B,S5M), YT (S5B)

SUMMARY OF PREDICTED HABITAT BY MANAGMENT AND GAP PROTECTION STATUS:

	US FWS		US Forest Service		Tenn. Valley Author.		US DOD/ACOE	
	ha	%	ha	%	ha	%	ha	%
Status 1	4,774.6	< 1	728.0	< 1	0.0	0	0.0	0
Status 2	15,816.5	< 1	6,091.7	< 1	0.0	0	1,520.5	< 1
Status 3	578.4	< 1	64,945.8	< 1	28,940.2	< 1	48,797.0	< 1
Status 4	5.0	< 1	0.0	0	0.0	0	15.7	< 1
Total	21,174.6	< 1	71,765.6	< 1	28,940.2	< 1	50,333.1	< 1
	US Dept. of Energy		US Nat. Park Service		NOAA		Other Federal Lands	
	ha	%	ha	%	ha	%	ha	%
Status 1	0.0	0	8,427.5	< 1	0.0	0	0.0	0
Status 2	0.0	0	377.5	< 1	0.0	0	0.0	0
Status 3	3,031.4	< 1	15,558.7	< 1	0.0	0	304.4	< 1
Status 4	0.0	0	0.0	0	0.0	0	0.0	0
Total	3,031.4	< 1	24,363.6	< 1	0.0	0	304.4	< 1
	Native Am. Reserv.		State Park/Hist. Park		State WMA/Gameland		State Forest	
	ha	%	ha	%	ha	%	ha	%
Status 1	0.0	0	38.3	< 1	7.9	< 1	0.0	0
Status 2	0.0	0	449.7	< 1	59,257.2	< 1	55.8	< 1
Status 3	2,297.5	< 1	12,393.7	< 1	19,693.1	< 1	1,582.1	< 1
Status 4	0.0	0	0.0	0	4,656.5	< 1	0.0	0
Total	2,297.5	< 1	12,881.8	< 1	83,614.7	< 1	1,637.9	< 1
	State Coastal Reserve		ST Nat.Area/Preserve		Other State Lands		Private Cons. Easemt.	
	ha	%	ha	%	ha	%	ha	%
Status 1	0.0	0	419.3	< 1	0.0	0	0.0	0
Status 2	9,471.5	< 1	10,425.3	< 1	4.4	< 1	352.9	< 1
Status 3	0.0	0	526.1	< 1	1,158.0	< 1	1,984.7	< 1
Status 4	0.0	0	0.0	0	323.7	< 1	0.0	0
Total	9,471.5	< 1	11,370.7	< 1	1,486.2	< 1	2,337.6	< 1
	Private Land - No Res.		Water		Overall Total			
	ha	%	ha	%	ha	%	ha	%
Status 1	0.0	0	0.0	0			14,395.7	< 1
Status 2	0.0	0	0.0	0			103,823.0	< 1
Status 3	0.0	0	0.0	0			201,791.1	2
Status 4	11,057,176.3	96	10,433.9	< 1			11,077,262.6	97
Total	11,057,176.3	96	10,433.9	< 1			11,397,272.3	100

GAP Status 1: An area having permanent protection from conversion of natural land cover and a mandated management plan in operation to maintain a natural state within which disturbance events (of natural type, frequency, and intensity) are allowed to proceed without interference or are mimicked through management.

GAP Status 2: An area having permanent protection from conversion of natural land cover and a mandated management plan in operation to maintain a primarily natural state, but which may receive use or management practices that degrade the quality of existing natural communities.

GAP Status 3: An area having permanent protection from conversion of natural land cover for the majority of the area, but subject to extractive uses of either a broad, low-intensity type or localized intense type. It also confers protection to federally listed endangered and threatened species throughout the area.

GAP Status 4: Lack of irrevocable easement or mandate to prevent conversion of natural habitat types to anthropogenic habitat types. Allows for intensive use throughout the tract. Also includes those tracts for which the existence of such restrictions or sufficient information to establish a higher status is unknown.

PREDICTED HABITAT MODEL(S):

Summer Model:

Habitat Description: A secondary cavity nester in open habitats near water. Open habitats can include fields, marshes, shorelines, wooded swamps, open water margins. Forages in and around nesting areas, i.e. open areas near water. Ideal habitats are snags with cavities standing in open water (e.g. beaver ponds). M. Rubino, 06jan05.

Hydrography Mask:

Utilizes flowing water features with buffers of 250m from and 60m into selected water features.

Utilizes open water features with buffers of 250m from and 60m into selected water features.

Selected Map Units:

Functional Group	Map Unit Name
Anthropogenic	Developed Open Space
Anthropogenic	Low Intensity Developed
Anthropogenic	Pasture/Hay
Anthropogenic	Successional Grassland/Herbaceous
Anthropogenic	Successional Grassland/Herbaceous (Other)
Anthropogenic	Successional Grassland/Herbaceous (Utility Swath)
Anthropogenic	Successional Shrub/Scrub (Clear Cut)
Anthropogenic	Successional Shrub/Scrub (Other)
Anthropogenic	Successional Shrub/Scrub (Utility Swath)
Brackish Tidal Marsh & Wetland	Atlantic Coastal Plain Northern Tidal Salt Marsh
Coastal Dune & Freshwater Wetland	Atlantic Coastal Plain Northern Dune and Maritime Grassland
Forest/Woodland	Alabama Ketona Glade and Woodland
Forest/Woodland	Appalachian Serpentine Woodland
Forest/Woodland	Appalachian Shale Barrens
Forest/Woodland	Central Appalachian Alkaline Glade and Woodland
Forest/Woodland	Central Appalachian Pine-Oak Rocky Woodland
Forest/Woodland	Central Interior Highlands Calcareous Glade and Barrens
Forest/Woodland	Central Interior Highlands Dry Acidic Glade and Barrens
Forest/Woodland	Cumberland Sandstone Glade and Barrens
Forest/Woodland	East Gulf Coastal Plain Black Belt Calcareous Prairie and Woodland - Woodland Modifier
Forest/Woodland	Nashville Basin Limestone Glade
Forest/Woodland	Ridge and Valley Calcareous Valley Bottom Glade and Woodland
Forest/Woodland	Southern and Central Appalachian Mafic Glade and Barrens
Forest/Woodland	Southern Piedmont Glade and Barrens
Forest/Woodland	Southern Piedmont Mafic Hardpan Woodland
Forest/Woodland	Southern Piedmont Northern Triassic Basin Dry Forest
Freshwater Tidal Marsh & Wetland	Atlantic Coastal Plain Central Fresh-Oligohaline Tidal Marsh
Freshwater Tidal Marsh & Wetland	Atlantic Coastal Plain Embayed Region Tidal Freshwater Marsh
Freshwater Tidal Marsh & Wetland	Atlantic Coastal Plain Northern Fresh and Oligohaline Tidal Marsh
Prairie	Bluegrass Basin Savanna and Woodland
Prairie	East Gulf Coastal Plain Black Belt Calcareous Prairie and Woodland
Prairie	East Gulf Coastal Plain Black Belt Calcareous Prairie and Woodland - Herbaceous Modifier
Prairie	East Gulf Coastal Plain Jackson Plain Prairie and Barrens
Prairie	East Gulf Coastal Plain Jackson Prairie and Woodland
Prairie	Eastern Highland Rim Prairie and Barrens
Prairie	Eastern Highland Rim Prairie and Barrens - Dry Modifier
Prairie	Florida Dry Prairie
Prairie	Panhandle Florida Limestone Glade
Prairie	Pennyroyal Karst Plain Prairie and Barrens
Prairie	Southern Ridge and Valley Patch Prairie
Prairie	Western Highland Rim Prairie and Barrens
Water	Open Water (Fresh)
Wetlands	Atlantic Coastal Plain Depression Pondshore

Wetlands	Atlantic Coastal Plain Large Natural Lakeshore
Wetlands	Atlantic Coastal Plain Northern Pondshore
Wetlands	Central Appalachian Floodplain - Forest Modifier
Wetlands	Central Appalachian Floodplain - Herbaceous Modifier
Wetlands	Central Appalachian Riparian - Forest Modifier
Wetlands	Central Appalachian Riparian - Herbaceous Modifier
Wetlands	Central Interior Highlands and Appalachian Sinkhole and Depression Pond
Wetlands	East Gulf Coastal Plain Interior Shrub Bog
Wetlands	East Gulf Coastal Plain Large River Floodplain Forest - Forest Modifier
Wetlands	East Gulf Coastal Plain Large River Floodplain Forest - Herbaceous Modifier
Wetlands	East Gulf Coastal Plain Northern Depression Pondshore
Wetlands	East Gulf Coastal Plain Northern Seepage Swamp
Wetlands	East Gulf Coastal Plain Small Stream and River Floodplain Forest
Wetlands	Mississippi River Low Floodplain (Bottomland) Forest
Wetlands	North-Central Appalachian Acidic Swamp
Wetlands	North-Central Appalachian Seepage Fen
Wetlands	North-Central Interior and Appalachian Rich Swamp
Wetlands	South-Central Interior Large Floodplain - Forest Modifier
Wetlands	South-Central Interior Large Floodplain - Herbaceous Modifier
Wetlands	South-Central Interior Small Stream and Riparian
Wetlands	Southern and Central Appalachian Bog and Fen
Wetlands	Southern Appalachian Seepage Wetland
Wetlands	Southern Piedmont Large Floodplain Forest - Forest Modifier
Wetlands	Southern Piedmont Large Floodplain Forest - Herbaceous Modifier
Wetlands	Southern Piedmont Seepage Wetland
Wetlands	Southern Piedmont Small Floodplain and Riparian Forest
Wetlands	Southern Piedmont/Ridge and Valley Upland Depression Swamp

CITATIONS: American Ornithologists' Union (AOU), Committee on Classification and Nomenclature. 1983. Check-list of North American Birds. Sixth Edition. American Ornithologists' Union, Allen Press, Inc., Lawrence, Kansas.

Ehrlich, P.R., D.S. Dobkin, and D. Wheye. 1988. The birder's handbook: a field guide to the natural history of North American birds. Simon and Shuster, Inc., New York. xxx + 785 pp.

Fussell, J.O. III. 1994. A birder's guide to coastal North Carolina. Chapel Hill and London: The University of North Carolina Press.

Godfrey, W.E. 1966. The birds of Canada. National Museums of Canada. Ottawa. 428 pp.

Harrison, C. 1978. A field guide to the nests, eggs and nestlings of North American birds. Collins, Cleveland, Ohio.

Kaufman K. 1996. Lives of North American Birds. Boston, New York: Houghton Mifflin Company.

Lee, D. S. 1993. Range expansion of the tree swallow, *TACHYCINETA BICOLOR* (Passeriformes: Hirundinidae), in the southeastern United States. *Brimleyana* 18:103-113.

Lumsden, H. G. 1989. Test of nest box preferences of eastern bluebirds, *SIALIA SIALIS*, and tree swallows, *TACHYCINETA BICOLOR*. *Can. Field-Nat.* 103:595-597.

Mitchell, W.A. 1988. Songbird nest boxes. Section 5.1.8, U.S. Army Corps of Engineers, Wildlife Resources Management Manual. Tech. Rep. EL-88-19. Waterways Experiment Station, Vicksburg, Mississippi. 48 pp.

National Geographic Society (NGS). 1983. Field guide to the birds of North America. National Geographic Society, Washington, D.C.

Oberholser, H.C. 1974. The bird life of Texas. 2 vols. Univ. of Texas Press, Austin.

Raffaele, H.A. 1983. A guide to the birds of Puerto Rico and the Virgin Islands. Fondo Educativo Interamericano, San Juan, Puerto Rico. 255 pp.

Ridgely, R.S., and G. Tudor. 1989. The birds of South America. Vol. 1. The Oscine passerines. Univ. Texas Press, Austin. 516 pp.

Sheldon, F. H., and D. W. Winkler. 1993. Intergeneric phylogenetic relationships of swallows estimated by DNA-DNA hybridization. *Auk* 110:798-824.

Simpson MB Jr. 1992. Birds of the Blue Ridge Mountains. Chapel Hill and London: University of North Carolina Press.

Smith, P.W., and S.A. Smith. 1990. The identification and status of the Bahama swallow in Florida. *Birding* 22:264-271.

Stiles, F.G., and A.F. Skutch. 1989. *A guide to the birds of Costa Rica*. Comstock Publ. Associates, Cornell University Press, Ithaca, New York. 511 pp.

Terres, J.K. 1980. *The Audubon Society encyclopedia of North American birds*. Alfred A. Knopf, New York.

Turner, A., and C. Rose. 1989. *Swallows and martins an identification guide*. Houghton Mifflin Co., Boston.

For more information:: SE-GAP Analysis Project / BaSIC
127 David Clark Labs
Dept. of Biology, NCSU
Raleigh, NC 27695-7617
(919) 513-2853
www.basic.ncsu.edu/segap

Compiled: 15 September 2011

This data was compiled and/or developed
by the Southeast GAP Analysis Project at
The Biodiversity and Spatial Information
Center, North Carolina State University.