



# SOUTHEAST GAP ANALYSIS PROJECT



## Species Modeling Report

### Upland Sandpiper

*Bartramia longicauda*

Taxa: Avian

Order: Charadriiformes

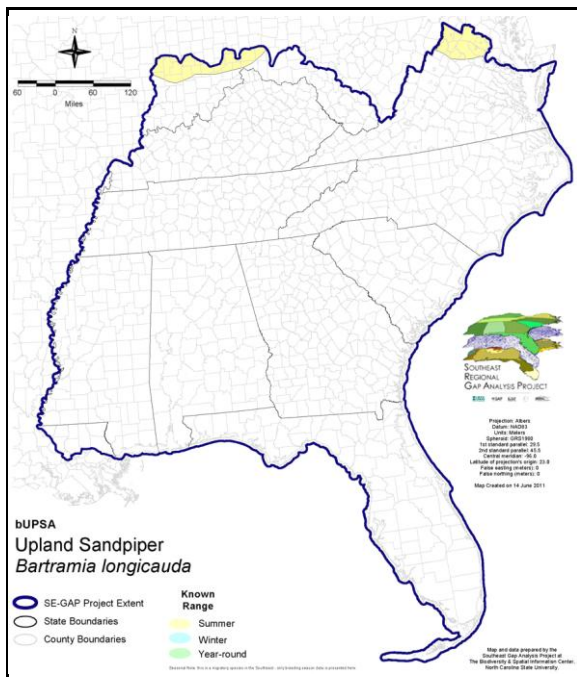
Family: Scolopacidae

SE-GAP Spp Code: **bUPSA**

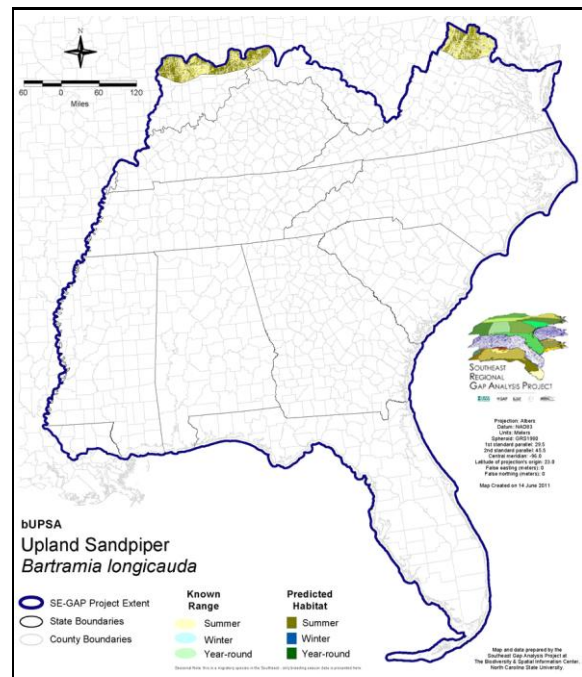
ITIS Species Code: 176610

NatureServe Element Code: ABNNF06010

#### KNOWN RANGE:



#### PREDICTED HABITAT:



Range Map Link: [http://www.basic.ncsu.edu/segap/datazip/maps/SE\\_Range\\_bUPSA.pdf](http://www.basic.ncsu.edu/segap/datazip/maps/SE_Range_bUPSA.pdf)

Predicted Habitat Map Link: [http://www.basic.ncsu.edu/segap/datazip/maps/SE\\_Dist\\_bUPSA.pdf](http://www.basic.ncsu.edu/segap/datazip/maps/SE_Dist_bUPSA.pdf)

GAP Online Tool Link: <http://www.gapservice.ncsu.edu/segap/segap/index2.php?species=bUPSA>

Data Download: [http://www.basic.ncsu.edu/segap/datazip/region/vert/bUPSA\\_se00.zip](http://www.basic.ncsu.edu/segap/datazip/region/vert/bUPSA_se00.zip)

#### PROTECTION STATUS:

Reported on March 14, 2011

Federal Status: ---

State Status: CT (E), CT (E), DE (E), DE (E), ID (P), ID (P), IL (LE), IN (SE), KY (H), MA (E), MD (E), ME (T), MN (NON), ND (Level I), NH (E), NJ (E), NV (YES), NY (T), OH (T), OR (SC), PA (PT), RI (State Endangered), UT (None), VA (LT), VA (LT), VT (E), WA (E), WI (SC/M), WI (SC/M), BC (2 (2005)), QC (Non suivie)

NS Global Rank: G5

NS State Rank: AK (S4B), AL (S3S4N), AR (SNA), AZ (SNA), CA (SNA), CO (S3B), CO (S3B), CT (S1B), CT (S1B), DC (S1N), DE (SHB), DE (SHB), FL (SNA), GA (SNRN), IA (S3B), ID (S1B), ID (S1B), IL (S2S3), IN (S3B), KS (S4B), KY (SHB), LA (SNA), MA (S1B,S1N), MD (S1B), ME (S3B), MI (S4), MN (S4B), MO (S3), MS (SNA), MT (S4B), MT (S4B), NC (SNA), ND (SNRB), NE (S5), NH (S1B), NJ (S1B,S1N), NM (S4N), NV (SNA), NY (S3B), OH (S2), OK (S3S4), OR (S1B), PA (S1S2B), RI (S1B,S1N), SC (SNA), SD (S5B), SD (S5B), TN (SNA), TX (S3B,S4N), UT (SNA), VA (S1B), VA (S1B), VT (S2S3B,S3N), WA (SHB), WI (S2B), WI (S2B), WV (SHB,S1N), WV (SHB,S1N), WY (S3B), WY (S3B), AB (S3), BC (S1S2B), LB (SNA), MB (S3S4B), MB (S3S4B), NB (S1B), NF (SNA), NS (SNR), NS (SNR), NT (SNRB), NU (SNA), ON (S4B), PE (S1B), QC (S4B), SK (S5B,S5M), YT (S4B)



**SUMMARY OF PREDICTED HABITAT BY MANAGMENT AND GAP PROTECTION STATUS:**

	US FWS		US Forest Service		Tenn. Valley Author.		US DOD/ACOE	
	ha	%	ha	%	ha	%	ha	%
Status 1	0.0	0	0.0	0	0.0	0	0.0	0
Status 2	116.8	< 1	43.8	< 1	0.0	0	32.4	< 1
Status 3	< 0.1	< 1	462.7	< 1	0.0	0	1,728.3	< 1
Status 4	0.0	0	0.0	0	0.0	0	4.7	< 1
Total	116.9	< 1	506.5	< 1	0.0	0	1,765.4	< 1
	US Dept. of Energy		US Nat. Park Service		NOAA		Other Federal Lands	
	ha	%	ha	%	ha	%	ha	%
Status 1	0.0	0	742.1	< 1	0.0	0	0.0	0
Status 2	0.0	0	0.0	0	0.0	0	0.0	0
Status 3	0.0	0	1,669.6	< 1	0.0	0	0.0	0
Status 4	0.0	0	0.0	0	0.0	0	0.0	0
Total	0.0	0	2,411.6	< 1	0.0	0	0.0	0
	Native Am. Reserv.		State Park/Hist. Park		State WMA/Gameland		State Forest	
	ha	%	ha	%	ha	%	ha	%
Status 1	0.0	0	0.0	0	0.0	0	0.0	0
Status 2	0.0	0	0.0	0	44.6	< 1	0.0	0
Status 3	0.0	0	469.3	< 1	0.0	0	7.3	< 1
Status 4	0.0	0	0.0	0	0.0	0	0.0	0
Total	0.0	0	469.3	< 1	44.6	< 1	7.3	< 1
	State Coastal Reserve		ST Nat.Area/Preserve		Other State Lands		Private Cons. Easemt.	
	ha	%	ha	%	ha	%	ha	%
Status 1	0.0	0	0.0	0	0.0	0	0.0	0
Status 2	0.0	0	2.2	< 1	0.0	0	0.0	0
Status 3	0.0	0	0.0	0	0.0	0	0.0	0
Status 4	0.0	0	0.0	0	4.1	< 1	0.0	0
Total	0.0	0	2.2	< 1	4.1	< 1	0.0	0
	Private Land - No Res.		Water		Overall Total			
	ha	%	ha	%	ha	%	ha	%
Status 1	0.0	0	0.0	0	742.1	< 1		
Status 2	0.0	0	0.0	0	239.9	< 1		
Status 3	0.0	0	0.0	0	4,337.2	1		
Status 4	321,779.8	98	20.8	< 1	321,809.4	98		
Total	321,779.8	98	20.8	< 1	327,128.5	100		

GAP Status 1: An area having permanent protection from conversion of natural land cover and a mandated management plan in operation to maintain a natural state within which disturbance events (of natural type, frequency, and intensity) are allowed to proceed without interference or are mimicked through management.

GAP Status 2: An area having permanent protection from conversion of natural land cover and a mandated management plan in operation to maintain a primarily natural state, but which may receive use or management practices that degrade the quality of existing natural communities.

GAP Status 3: An area having permanent protection from conversion of natural land cover for the majority of the area, but subject to extractive uses of either a broad, low-intensity type or localized intense type. It also confers protection to federally listed endangered and threatened species throughout the area.

GAP Status 4: Lack of irrevocable easement or mandate to prevent conversion of natural habitat types to anthropogenic habitat types. Allows for intensive use throughout the tract. Also includes those tracts for which the existence of such restrictions or sufficient information to establish a higher status is unknown.

## PREDICTED HABITAT MODEL(S):

### Summer Model:

Habitat Description: In general, uses dry grasslands with low to moderate forb cover, low woody cover, moderate grass cover, moderate to high litter cover, and little bare ground. Prefers to forage among shorter vegetation in native grasses as well as pastures and old fields and meadows. M. Rubino, 29dec04.

### Selected Map Units:

Functional Group	Map Unit Name
Anthropogenic	Developed Open Space
Anthropogenic	Pasture/Hay
Anthropogenic	Row Crop
Anthropogenic	Successional Grassland/Herbaceous
Anthropogenic	Successional Grassland/Herbaceous (Other)
Anthropogenic	Successional Grassland/Herbaceous (Utility Swath)
Prairie	Bluegrass Basin Savanna and Woodland
Prairie	Pennyroyal Karst Plain Prairie and Barrens
Prairie	Southern Ridge and Valley Patch Prairie
Prairie	Western Highland Rim Prairie and Barrens

- CITATIONS:** American Ornithologists' Union (AOU), Committee on Classification and Nomenclature. 1983. Check-list of North American Birds. Sixth Edition. American Ornithologists' Union, Allen Press, Inc., Lawrence, Kansas.
- Bent, A.C. 1929. Life histories of North American shore birds. Part II. U.S. National Museum Bulletin No. 146. Washington, D.C.
- Byrd, M.A., and D.W. Johnston. 1991. Birds. Pages 477-537 in K. Terwilliger, coordinator. Virginia's endangered species: proceedings of a symposium. McDonald and Woodward Publ. Co., Blacksburg, Virginia.
- Carter, J. W. 1992. Upland sandpiper, *BARTRAMIA LONGICAUDA*. Pages 235-252 in K. J. Schneider and D. M. Pence, editors. Migratory nongame birds of management concern in the Northeast. U.S. Fish and Wildlife Service, Newton Corner, Massachusetts. 400 pp.
- Droege, S., and J.R. Sauer. 1990. North American Breeding Bird Survey, annual summary, 1989. U.S. Fish and Wildlife Service, Biological Report 90(8). 22 pp.
- Ehrlich, P.R., D.S. Dobkin, and D. Wheye. 1992. Birds in jeopardy: the imperiled and extinct birds of the United States and Canada, including Hawaii and Puerto Rico. Stanford University Press, Stanford, California. 259 pp.
- Hagan, J.M., III, and D.W. Johnston, editors. 1992. Ecology and conservation of neotropical migrant landbirds. Smithsonian Institution Press, Washington, D.C. xiii + 609 pp.
- Harrison, H.H. 1979. A field guide to western birds' nests. Houghton Mifflin Company, Boston. 279 pp.
- Herkert, J. R., editor. 1992. Endangered and threatened species of Illinois: status and distribution. Vol. 2: Animals. Illinois Endangered Species Protection Board. iv + 142 pp.
- Peterjohn, B.G., J.R. Sauer, and W.A. Link. 1994. The 1992 and 1993 summary of the North American Breeding Bird Survey. Bird Populations 2:46-61.
- Raffaele, H.A. 1983. A guide to the birds of Puerto Rico and the Virgin Islands. Fondo Educativo Interamericano, San Juan, Puerto Rico. 255 pp.
- Sauer, J.R., and S. Droege. 1992. Geographical patterns in population trends of neotropical migrants in North America. Pages 26-42 in J.M. Hagan III and D.W. Johnston, editors. Ecology and conservation of neotropical migrant landbirds. Smithsonian Institution.
- Stiles, F.G., and A.F. Skutch. 1989. A guide to the birds of Costa Rica. Comstock Publ. Associates, Cornell University Press, Ithaca, New York. 511 pp.
- Terres, J.K. 1980. The Audubon Society encyclopedia of North American birds. Alfred A. Knopf, New York.
- U. S. Fish and Wildlife Service, Office of Migratory Bird Management. 1987. Migratory nongame birds of management concern in the United States: the 1987 list.
- White, R.P. 1983. Distribution and habitat preferences of the upland sandpiper (*BARTRAMIA LONGICAUDA*) in Wisconsin. American Birds 37(1):16-22.
- White, R.P. 1988. Wintering grounds and migration patterns of the upland sandpiper. American Birds 42:1247-1253.

For more information:: SE-GAP Analysis Project / BaSIC  
127 David Clark Labs  
Dept. of Biology, NCSU  
Raleigh, NC 27695-7617  
(919) 513-2853  
[www.basic.ncsu.edu/segap](http://www.basic.ncsu.edu/segap)

Compiled: 15 September 2011

This data was compiled and/or developed  
by the Southeast GAP Analysis Project at  
The Biodiversity and Spatial Information  
Center, North Carolina State University.