



SOUTHEAST GAP ANALYSIS PROJECT



Species Modeling Report

Vesper Sparrow

Pooecetes gramineus

Taxa: Avian

Order: Passeriformes

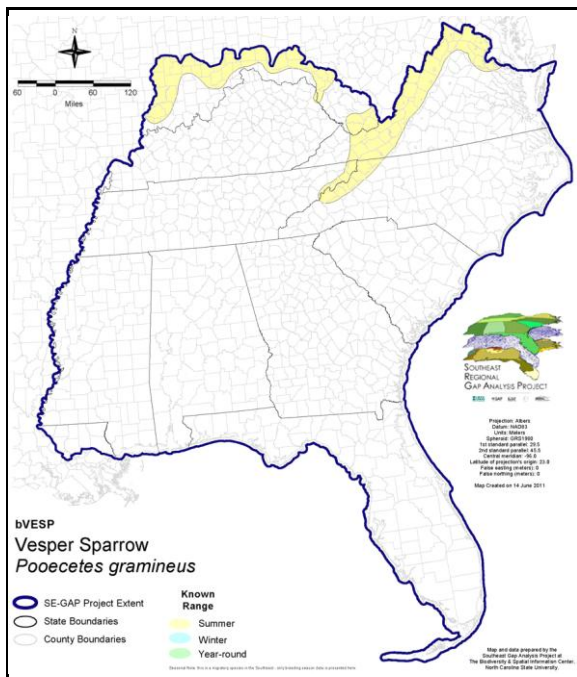
Family: Emberizidae

SE-GAP Spp Code: **bVESP**

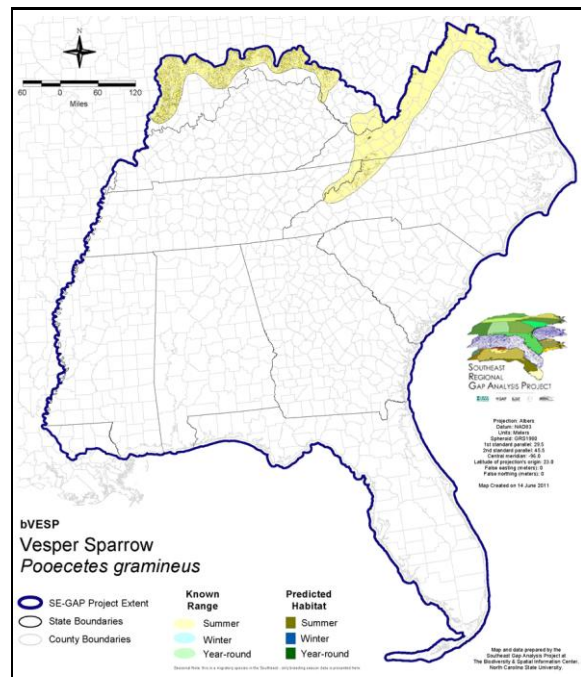
ITIS Species Code: 179366

NatureServe Element Code: ABPBX95010

KNOWN RANGE:



PREDICTED HABITAT:



Range Map Link: http://www.basic.ncsu.edu/segap/datazip/maps/SE_Range_bVESP.pdf

Predicted Habitat Map Link: http://www.basic.ncsu.edu/segap/datazip/maps/SE_Dist_bVESP.pdf

GAP Online Tool Link: <http://www.gapservice.ncsu.edu/segap/segap/index2.php?species=bVESP>

Data Download: http://www.basic.ncsu.edu/segap/datazip/region/vert/bVESP_se00.zip

PROTECTION STATUS:

Reported on March 14, 2011

Federal Status: ---

State Status: CT (E), CT (E), ID (P), ID (P), KY (E), KY (E), MA (T), NC (SC), NH (SC), NJ (E), NV (YES), NY (SC), OR (SC), RI (State Historical), RI (State Historical), TN (D), UT (None), WA (C-Part), WA (C-Part), WI (SC/M), WI (SC/M), BC (4 (2005)), BC (4 (2005)), QC (Non suivie)

NS Global Rank: G5

NS State Rank: AL (S4N), AR (S3N), AZ (S5), CA (SNR), CO (S5), CT (S1B), CT (S1B), DC (S3N), DE (S3B), FL (SNRN), GA (S4), IA (S4B,S4N), ID (S4B), ID (S4B), IL (S5), IN (S4B), IN (S4B), KS (S2B), KY (S1B), KY (S1B), LA (S4N), MA (S1S2B,S3N), MD (S3S4B,S2N), ME (S3S4B), MI (S5), MN (SNRB), MO (SNRB), MS (SNA), MT (S5B), MT (S5B), NC (S2B,S2N), ND (SNRB), NE (S5), NH (S2S3B), NJ (S1B,S2N), NM (S5B,S4N), NV (S4B), NY (S5), OH (S5), OK (S4N), OR (S4B), PA (S4B), RI (SHB,S1N), RI (SHB,S1N), SC (SNRN), SD (S5B), SD (S5B), TN (S1B,S4N), TX (S5), UT (S5B,S2N), VA (S4), VT (S3B), VT (S3B), WA (S4B), WA (S4B), WI (S4B), WI (S4B), WV (S3B,S2N), WY (S5B,S5N), AB (S5), BC (S4S5B), BC (S4S5B), MB (S5B), MB (S5B), NB (S2B), NF (SNA), NS (S2S3B), NT (SNRB), ON (S4B), PE (S1S2B), QC (S4B), SK (S5B)

SUMMARY OF PREDICTED HABITAT BY MANAGMENT AND GAP PROTECTION STATUS:

	US FWS		US Forest Service		Tenn. Valley Author.		US DOD/ACOE	
	ha	%	ha	%	ha	%	ha	%
Status 1	0.0	0	69.2	< 1	0.0	0	0.0	0
Status 2	0.0	0	1,610.2	2	0.0	0	0.0	0
Status 3	0.0	0	1,484.1	2	0.0	0	0.0	0
Status 4	0.0	0	0.0	0	0.0	0	0.0	0
Total	0.0	0	3,163.5	5	0.0	0	0.0	0
	US Dept. of Energy		US Nat. Park Service		NOAA		Other Federal Lands	
	ha	%	ha	%	ha	%	ha	%
Status 1	0.0	0	2.8	< 1	0.0	0	0.0	0
Status 2	0.0	0	0.0	0	0.0	0	0.0	0
Status 3	0.0	0	579.4	< 1	0.0	0	0.0	0
Status 4	0.0	0	0.0	0	0.0	0	0.0	0
Total	0.0	0	582.2	< 1	0.0	0	0.0	0
	Native Am. Reserv.		State Park/Hist. Park		State WMA/Gameland		State Forest	
	ha	%	ha	%	ha	%	ha	%
Status 1	0.0	0	0.0	0	0.0	0	0.0	0
Status 2	0.0	0	0.0	0	265.8	< 1	0.0	0
Status 3	0.0	0	328.6	< 1	45.0	< 1	27.4	< 1
Status 4	0.0	0	0.0	0	0.0	0	0.0	0
Total	0.0	0	328.6	< 1	310.8	< 1	27.4	< 1
	State Coastal Reserve		ST Nat.Area/Preserve		Other State Lands		Private Cons. Easemt.	
	ha	%	ha	%	ha	%	ha	%
Status 1	0.0	0	0.0	0	0.0	0	0.0	0
Status 2	0.0	0	77.3	< 1	0.0	0	0.0	0
Status 3	0.0	0	0.0	0	0.0	0	0.0	0
Status 4	0.0	0	0.0	0	0.0	0	0.0	0
Total	0.0	0	77.3	< 1	0.0	0	0.0	0
	Private Land - No Res.		Water		Overall Total			
	ha	%	ha	%	ha	%		
Status 1	0.0	0	0.0	0	72.0	< 1		
Status 2	0.0	0	0.0	0	1,953.3	3		
Status 3	0.0	0	0.0	0	2,464.5	6		
Status 4	62,531.2	91	7.9	< 1	62,539.1	91		
Total	62,531.2	91	7.9	< 1	67,028.9	100		

GAP Status 1: An area having permanent protection from conversion of natural land cover and a mandated management plan in operation to maintain a natural state within which disturbance events (of natural type, frequency, and intensity) are allowed to proceed without interference or are mimicked through management.

GAP Status 2: An area having permanent protection from conversion of natural land cover and a mandated management plan in operation to maintain a primarily natural state, but which may receive use or management practices that degrade the quality of existing natural communities.

GAP Status 3: An area having permanent protection from conversion of natural land cover for the majority of the area, but subject to extractive uses of either a broad, low-intensity type or localized intense type. It also confers protection to federally listed endangered and threatened species throughout the area.

GAP Status 4: Lack of irrevocable easement or mandate to prevent conversion of natural habitat types to anthropogenic habitat types. Allows for intensive use throughout the tract. Also includes those tracts for which the existence of such restrictions or sufficient information to establish a higher status is unknown.

PREDICTED HABITAT MODEL(S):

Summer Model:

Habitat Description: "Considered a moderate habitat generalist, breeding in dry, open habitats with short, sparse, and patchy herbaceous vegetation; some bare ground; and low to moderate shrub or tall forb cover (Swanson 1996, Dechant et al. 2000). Generally avoids wet areas with tall, dense vegetation (Graber and Graber 1963, Best and Rodenhouse 1984). Occupies a broad range of grassland habitat types, including native prairie, semi-desert grasslands, old fields, pastures, haylands, weedy fencelines, croplands, woodland edges with scattered trees and shrubs." Quoted directly from Jones and Cornely (2002). Found at moderate to high elevations west of Blue Ridge Parkway North Carolina in grassy balds, pastures, brushy fields (Simpson 1992). M. Rubino, 11Jan05.

Customized Model: Don't limit by elevation in the western portion of the range--i.e. OH, IN, and western WV. Also, restrict Pasture/Hay and Row Crop map units to 'drier' landforms, i.e. those that are NOT moist/wet flats and slope bottoms (see Jones and Cornely 2002). MJR 27 March 2008.

Elevation Mask: > 914m and < 2500m

Selected Map Units:

Functional Group	Map Unit Name
Anthropogenic	Pasture/Hay
Anthropogenic	Row Crop
Anthropogenic	Successional Grassland/Herbaceous
Anthropogenic	Successional Grassland/Herbaceous (Other)
Anthropogenic	Successional Grassland/Herbaceous (Utility Swath)
Anthropogenic	Successional Shrub/Scrub (Clear Cut)
Anthropogenic	Successional Shrub/Scrub (Other)
Anthropogenic	Successional Shrub/Scrub (Utility Swath)
Bald	Central Appalachian Montane Rocky Bald - Herbaceous Modifier
Bald	Central Appalachian Montane Rocky Bald - Shrub Modifier
Bald	Southern Appalachian Grass and Shrub Bald - Herbaceous Modifier
Bald	Southern Appalachian Grass and Shrub Bald - Shrub Modifier
Forest/Woodland	East Gulf Coastal Plain Black Belt Calcareous Prairie and Woodland - Woodland Modifier
Prairie	Bluegrass Basin Savanna and Woodland
Prairie	East Gulf Coastal Plain Black Belt Calcareous Prairie and Woodland
Prairie	East Gulf Coastal Plain Black Belt Calcareous Prairie and Woodland - Herbaceous Modifier
Prairie	East Gulf Coastal Plain Jackson Plain Prairie and Barrens
Prairie	East Gulf Coastal Plain Jackson Prairie and Woodland
Prairie	Eastern Highland Rim Prairie and Barrens
Prairie	Eastern Highland Rim Prairie and Barrens - Dry Modifier
Prairie	Florida Dry Prairie
Prairie	Panhandle Florida Limestone Glade
Prairie	Pennyroyal Karst Plain Prairie and Barrens
Prairie	Southern Ridge and Valley Patch Prairie
Prairie	Western Highland Rim Prairie and Barrens

CITATIONS: Adams, J. S., et al. 1994. Survival and growth of nestling vesper sparrows exposed to experimental food reductions. *Condor* 96:739-748.

American Ornithologists' Union (AOU), Committee on Classification and Nomenclature. 1983. Check-list of North American Birds. Sixth Edition. American Ornithologists' Union, Allen Press, Inc., Lawrence, Kansas.

American Ornithologists' Union. 1957. Check-list of North American birds. Fifth edition. American Ornithologists' Union. Port City Press, Inc. Baltimore, Maryland. 691 p. (Reprinted in 1961 by Port City Press, Inc., Baltimore, Maryland.).

Best, L. B. and N. L. Rodenhouse. 1984. Territory preference of Vesper Sparrows in cropland. *Wilson Bull.* 96: 72-82.

Dechant, J. A., M. F. Dinkins, D. H. Johnson, L. D. Igl and C. M. Goldade. 2000. Effects of management practices on grassland birds: Vesper Sparrow. Unpubl. rep., USGS, BRD, NPWRC, Jamestown, ND.

Graber, R. R., and J. W. Graber. 1963. A comparative study of bird populations in Illinois, 1906-1909 and 1956-1958. *Illinois Natural History Survey Bull.* 28:383-528.

- Harrison, C. 1978. A field guide to the nests, eggs and nestlings of North American birds. Collins, Cleveland, Ohio.
- Jones, Stephanie L. and John E. Cornely. 2002. Vesper Sparrow (*Poocetes gramineus*), The Birds of North America Online (A. Poole, Ed.). Ithaca: Cornell Lab of Ornithology; no. 624.
- Knight, R.L. 1997. Vesper Sparrow. Pp. 342-343 in Nicholson CP. 1997. Atlas of the breeding birds of Tennessee. Knoxville: The University of Tennessee Press. 426 p.
- Pearson, T.G. 1959. Birds of North Carolina. Raleigh, NC: Bynum Printing Company.
- Potter, E. F., J. F. Parnell, and R. P. Teulings. 1980. Birds of the Carolinas. Univ. North Carolina Press, Chapel Hill. 408 pp.
- Pylypec, B. 1991. Impacts of fire on bird populations in a fescue prairie. Canadian Field-Naturalist 105(3):346-349.
- Rodenhouse, N. L., and L. B. Best. 1983. Breeding ecology of vesper sparrows in corn and soybean fields. Am. Midl. Nat. 110:265-275.
- Rodenhouse, N. L., and L. B. Best. 1994. Foraging patterns of vesper sparrows (*Poocetes gramineus*) breeding in cropland. Am. Midl. Nat. 131:196-206.
- Simpson MB Jr. 1992. Birds of the Blue Ridge Mountains. Chapel Hill and London: University of North Carolina Press.
- Simpson, M.B. Jr. 1978. Breeding season distribution and ecology of the Vesper Sparrow in the southern Blue Ridge Mountain province. Chat 42:1-2.
- Skutch, A.F. 1996. Orioles, blackbirds, and their kin. A natural history. Tuscon: University of Arizona Press. 291p.
- Swanson, D. A. 1996. Nesting ecology and nesting habitat requirements of Ohio's grassland-nesting birds: a literature review. Div. Wildl., Ohio Dep. Nat. Resour., Ohio Fish Wildl. Rep. 13.
- Terres, J.K. 1980. The Audubon Society encyclopedia of North American birds. Alfred A. Knopf, New York.

For more information:: SE-GAP Analysis Project / BaSIC
127 David Clark Labs
Dept. of Biology, NCSU
Raleigh, NC 27695-7617
(919) 513-2853
www.basic.ncsu.edu/segap

Compiled: 15 September 2011

This data was compiled and/or developed by the Southeast GAP Analysis Project at The Biodiversity and Spatial Information Center, North Carolina State University.