



SOUTHEAST GAP ANALYSIS PROJECT



Species Modeling Report

White Ibis

Eudocimus albus

Taxa: Avian

Order: Ciconiiformes

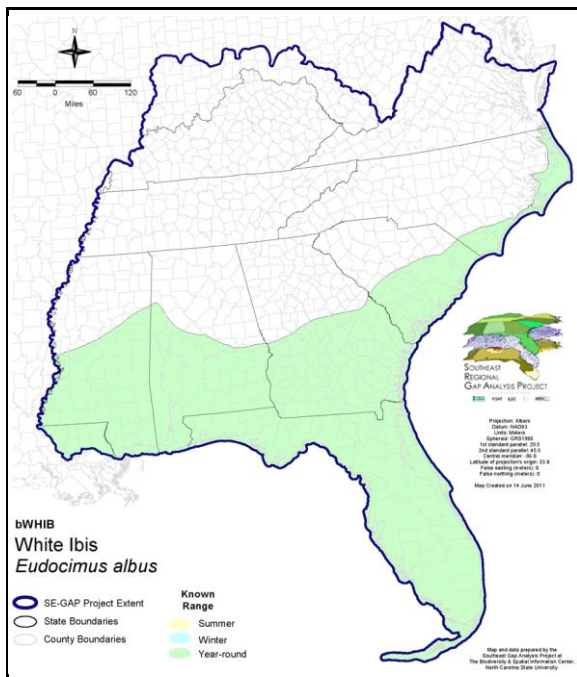
Family: Threskiornithidae

SE-GAP Spp Code: **bWHIB**

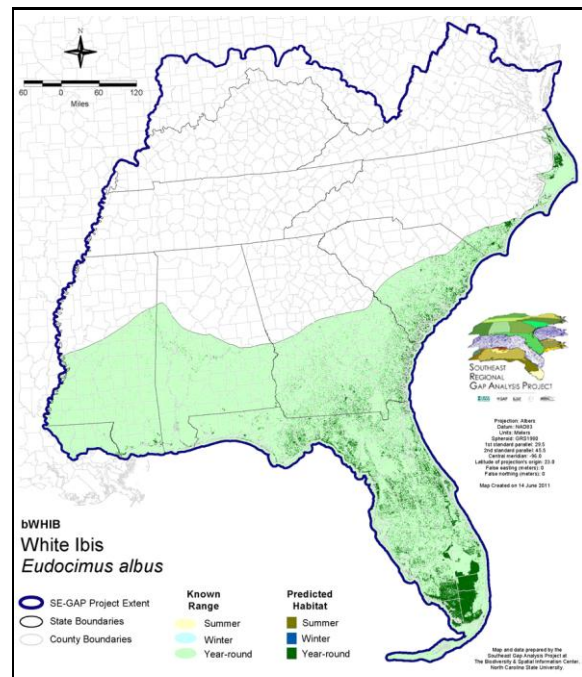
ITIS Species Code: 174930

NatureServe Element Code: ABNGE01010

KNOWN RANGE:



PREDICTED HABITAT:



Range Map Link: http://www.basic.ncsu.edu/segap/datazip/maps/SE_Range_bWHIB.pdf

Predicted Habitat Map Link: http://www.basic.ncsu.edu/segap/datazip/maps/SE_Dist_bWHIB.pdf

GAP Online Tool Link: <http://www.gapservice.ncsu.edu/segap/segap/index2.php?species=bWHIB>

Data Download: http://www.basic.ncsu.edu/segap/datazip/region/vert/bWHIB_se00.zip

PROTECTION STATUS:

Reported on March 14, 2011

Federal Status: ---

State Status: FL (SSC), ID (P), KY (N), NC (W2), NY (PB), QC (Non suivie)

NS Global Rank: G5

NS State Rank: AL (S3N,S4B), AR (S1B), AR (S1B), AZ (SNA), CA (SNA), CO (SNA), DE (SNA), FL (S4), GA (S4), ID (SNA), IL (SNA), IN (SNA), KS (SNA), KY (SNA), LA (S5), MD (SNA), MI (SNA), MO (SNA), MS (S2B,S3N), MS (S2B,S3N), NC (S3B,S3N), NJ (SNA), NM (SNA), NY (SNA), OK (SNA), PA (SNA), SC (SNR), TN (S3N), TX (S4B), VA (S1B), VA (S1B), WA (SNA), WI (SNA), WV (SNA), WY (SNA), MB (SNA), NB (SNA), NF (SNA), NS (SNA), ON (SNA), QC (SNA)

SUMMARY OF PREDICTED HABITAT BY MANAGMENT AND GAP PROTECTION STATUS:

| | US FWS | | US Forest Service | | Tenn. Valley Author. | | US DOD/ACOE | |
|----------|------------------------|-----|-----------------------|-----|----------------------|-----|-----------------------|-----|
| | ha | % | ha | % | ha | % | ha | % |
| Status 1 | 69,886.9 | 1 | 3,543.0 | < 1 | 0.0 | 0 | 0.0 | 0 |
| Status 2 | 77,406.4 | 2 | 13,354.6 | < 1 | 0.0 | 0 | 0.0 | 0 |
| Status 3 | 1,213.9 | < 1 | 97,761.8 | 2 | 0.0 | 0 | 51,911.1 | 1 |
| Status 4 | 5.6 | < 1 | 0.0 | 0 | 0.0 | 0 | 0.0 | 0 |
| Total | 148,512.8 | 3 | 114,659.4 | 2 | 0.0 | 0 | 51,911.1 | 1 |
| | US Dept. of Energy | | US Nat. Park Service | | NOAA | | Other Federal Lands | |
| | ha | % | ha | % | ha | % | ha | % |
| Status 1 | 0.0 | 0 | 350,845.3 | 7 | 909.0 | < 1 | 15,129.6 | < 1 |
| Status 2 | 0.0 | 0 | 31,998.3 | < 1 | 38,179.4 | < 1 | 32.2 | < 1 |
| Status 3 | 1,744.3 | < 1 | 235,534.0 | 5 | 0.0 | 0 | 10.9 | < 1 |
| Status 4 | 0.0 | 0 | 3.0 | 0 | 0.0 | 0 | 0.0 | 0 |
| Total | 1,744.3 | < 1 | 618,380.6 | 13 | 39,088.4 | < 1 | 15,172.7 | < 1 |
| | Native Am. Reserv. | | State Park/Hist. Park | | State WMA/Gameland | | State Forest | |
| | ha | % | ha | % | ha | % | ha | % |
| Status 1 | 0.0 | 0 | 36.5 | < 1 | 0.0 | 0 | 0.0 | 0 |
| Status 2 | 0.0 | 0 | 182.8 | < 1 | 453,057.9 | 10 | 0.0 | 0 |
| Status 3 | 0.0 | 0 | 289,781.5 | 6 | 43,411.3 | < 1 | 76,850.1 | 2 |
| Status 4 | 0.0 | 0 | < 0.1 | < 1 | 771.0 | < 1 | 0.0 | 0 |
| Total | 0.0 | 0 | 290,000.9 | 6 | 497,240.3 | 10 | 76,850.1 | 2 |
| | State Coastal Reserve | | ST Nat.Area/Preserve | | Other State Lands | | Private Cons. Easemt. | |
| | ha | % | ha | % | ha | % | ha | % |
| Status 1 | 0.0 | 0 | 482.0 | < 1 | 0.0 | 0 | 0.0 | 0 |
| Status 2 | 15,076.4 | < 1 | 24,164.9 | < 1 | 0.0 | 0 | 1,049.9 | < 1 |
| Status 3 | 0.0 | 0 | 11,270.5 | < 1 | 3,287.2 | < 1 | 39,163.7 | < 1 |
| Status 4 | 0.0 | 0 | 0.0 | 0 | 47.7 | < 1 | 0.0 | 0 |
| Total | 15,076.4 | < 1 | 35,917.5 | < 1 | 3,334.9 | < 1 | 40,213.6 | < 1 |
| | Private Land - No Res. | | Water | | Overall Total | | | |
| | ha | % | ha | % | ha | % | | |
| Status 1 | 0.0 | 3 | 0.0 | 0 | 440,832.6 | | | |
| Status 2 | 0.8 | < 1 | 0.0 | 5 | 654,503.9 | | | |
| Status 3 | 186.3 | < 1 | < 0.1 | < 1 | 852,126.6 | | | |
| Status 4 | 2,683,245.7 | 56 | 39,681.8 | < 1 | 2,724,520.4 | | | |
| Total | 2,683,433.0 | 56 | 39,682.2 | < 1 | 4,671,983.5 | | | |

GAP Status 1: An area having permanent protection from conversion of natural land cover and a mandated management plan in operation to maintain a natural state within which disturbance events (of natural type, frequency, and intensity) are allowed to proceed without interference or are mimicked through management.

GAP Status 2: An area having permanent protection from conversion of natural land cover and a mandated management plan in operation to maintain a primarily natural state, but which may receive use or management practices that degrade the quality of existing natural communities.

GAP Status 3: An area having permanent protection from conversion of natural land cover for the majority of the area, but subject to extractive uses of either a broad, low-intensity type or localized intense type. It also confers protection to federally listed endangered and threatened species throughout the area.

GAP Status 4: Lack of irrevocable easement or mandate to prevent conversion of natural habitat types to anthropogenic habitat types. Allows for intensive use throughout the tract. Also includes those tracts for which the existence of such restrictions or sufficient information to establish a higher status is unknown.

PREDICTED HABITAT MODEL(S):

Year-round Model:

Habitat Description: Nests on barrier, and marsh islands on the coast and inland lake islands (Kushlan and Bildstein 1992). Also nests in stands of trees within marshes and mangrove swamps. Nest sites are in interior and coastal wetlands, including those within the southeastern mixed forest, outer coastal plain forest, and savanna ecoregions from Bailey. Historically, the largest populations foraged in interior freshwater marshes and swamps of the Everglades (Kushlan and Bildstein 1992). Most nesting birds forage in inland wetlands, even when breeding on coastal islands. Inland feeding habitat is mainly shallow seasonal sedge marshes and shallow cypress swamps, as well as pastures and shallow ponds. Coastal feeding habitat includes salt marsh in the north and lagoonal salines and mangrove swamps in the south. M. Rubino, 21dec04.

Hydrography Mask:

Utilizes open water features with buffers of 1000m from and 30m into selected water features.

Utilizes wet vegetation features with buffer of unlimited into selected vegetation features.

Selected Map Units:

| Functional Group | Map Unit Name |
|----------------------------------|--|
| Beach | Unconsolidated Shore (Beach/Dune) |
| Brackish Tidal Marsh & Wetland | Atlantic Coastal Plain Central Salt and Brackish Tidal Marsh |
| Brackish Tidal Marsh & Wetland | Atlantic Coastal Plain Embayed Region Tidal Salt and Brackish Marsh |
| Brackish Tidal Marsh & Wetland | Atlantic Coastal Plain Indian River Lagoon Tidal Marsh |
| Brackish Tidal Marsh & Wetland | Atlantic Coastal Plain Northern Sea-Level Fen |
| Brackish Tidal Marsh & Wetland | Atlantic Coastal Plain Northern Tidal Salt Marsh |
| Brackish Tidal Marsh & Wetland | Atlantic Coastal Plain Northern Tidal Wooded Swamp |
| Brackish Tidal Marsh & Wetland | Atlantic Coastal Plain Southern Tidal Wooded Swamp |
| Brackish Tidal Marsh & Wetland | East Gulf Coastal Plain Tidal Wooded Swamp |
| Brackish Tidal Marsh & Wetland | Florida Big Bend Salt-Brackish Tidal Marsh |
| Brackish Tidal Marsh & Wetland | Mississippi Sound Salt and Brackish Tidal Marsh |
| Brackish Tidal Marsh & Wetland | South Florida Everglades Sawgrass Marsh |
| Brackish Tidal Marsh & Wetland | South Florida Mangrove Swamp |
| Brackish Tidal Marsh & Wetland | Southwest Florida Perched Barriers Salt Swamp and Lagoon - Mangrove Modifier |
| Brackish Tidal Marsh & Wetland | Southwest Florida Perched Barriers Salt Swamp and Lagoon - Marsh Modifier |
| Forest/Woodland | Atlantic Coastal Plain Central Maritime Forest |
| Forest/Woodland | Atlantic Coastal Plain Northern Maritime Forest |
| Forest/Woodland | Atlantic Coastal Plain Southern Maritime Forest |
| Forest/Woodland | East Gulf Coastal Plain Maritime Forest |
| Forest/Woodland | Mississippi Delta Maritime Forest |
| Forest/Woodland | Southeast Florida Coastal Strand and Maritime Hammock |
| Forest/Woodland | Southwest Florida Coastal Strand and Maritime Hammock |
| Freshwater Tidal Marsh & Wetland | Atlantic Coastal Plain Central Fresh-Oligohaline Tidal Marsh |
| Freshwater Tidal Marsh & Wetland | Atlantic Coastal Plain Embayed Region Tidal Freshwater Marsh |
| Freshwater Tidal Marsh & Wetland | Atlantic Coastal Plain Northern Fresh and Oligohaline Tidal Marsh |
| Freshwater Tidal Marsh & Wetland | Florida Big Bend Fresh-Oligohaline Tidal Marsh |
| Water | Open Water (Aquaculture) |
| Water | Open Water (Brackish/Salt) |
| Water | Open Water (Fresh) |
| Wetlands | Atlantic Coastal Plain Blackwater Stream Floodplain Forest - Herbaceous Modifier |
| Wetlands | Atlantic Coastal Plain Clay-Based Carolina Bay Forested Wetland |
| Wetlands | Atlantic Coastal Plain Clay-Based Carolina Bay Herbaceous Wetland |
| Wetlands | Atlantic Coastal Plain Depression Pondshore |
| Wetlands | Atlantic Coastal Plain Large Natural Lakeshore |
| Wetlands | Atlantic Coastal Plain Nonriverine Swamp and Wet Hardwood Forest - Taxodium/Nyssa Modifier |
| Wetlands | Atlantic Coastal Plain Nonriverine Swamp and Wet Hardwood Forest - Oak Dominated Modifier |
| Wetlands | Atlantic Coastal Plain Northern Basin Peat Swamp |
| Wetlands | Atlantic Coastal Plain Northern Basin Swamp and Wet Hardwood Forest |

| | |
|----------|---|
| Wetlands | Atlantic Coastal Plain Northern Pondshore |
| Wetlands | Atlantic Coastal Plain Peatland Pocosin |
| Wetlands | Atlantic Coastal Plain Streamhead Seepage Swamp, Pocosin, and Baygall |
| Wetlands | Central Appalachian Floodplain - Herbaceous Modifier |
| Wetlands | Central Appalachian Riparian - Herbaceous Modifier |
| Wetlands | Central Florida Herbaceous Pondshore |
| Wetlands | East Gulf Coastal Plain Large River Floodplain Forest - Herbaceous Modifier |
| Wetlands | East Gulf Coastal Plain Northern Depression Pondshore |
| Wetlands | East Gulf Coastal Plain Northern Seepage Swamp |
| Wetlands | East Gulf Coastal Plain Southern Depression Pondshore |
| Wetlands | Floridian Highlands Freshwater Marsh |
| Wetlands | Lower Mississippi River Bottomland Depressions - Herbaceous Modifier |
| Wetlands | South Florida Bayhead Swamp |
| Wetlands | South Florida Cypress Dome |
| Wetlands | South Florida Freshwater Slough and Gator Hole |
| Wetlands | South Florida Pond-Apple/Popash Slough |
| Wetlands | South Florida Willow Head |
| Wetlands | South-Central Interior Large Floodplain - Herbaceous Modifier |
| Wetlands | Southern Coastal Plain Herbaceous Seepage Bog |
| Wetlands | Southern Coastal Plain Hydric Hammock |
| Wetlands | Southern Coastal Plain Nonriverine Basin Swamp |
| Wetlands | Southern Coastal Plain Nonriverine Cypress Dome |
| Wetlands | Southern Coastal Plain Seepage Swamp and Baygall |
| Wetlands | Southern Coastal Plain Spring-run Stream Aquatic Vegetation |
| Wetlands | Southern Piedmont Large Floodplain Forest - Herbaceous Modifier |
| Wetlands | Unconsolidated Shore (Lake/River/Pond) |

CITATIONS: American Ornithologists' Union (AOU), Committee on Classification and Nomenclature. 1983. Check-list of North American Birds. Sixth Edition. American Ornithologists' Union, Allen Press, Inc., Lawrence, Kansas.

Bildstein, K. L. 1993. White ibis:wetland wanderer. Smithsonian Institution Press, Washington, D.C. xiii + 242 pp.

Bildstein, K. L., et al. 1990. Freshwater wetlands, rainfall, and the breeding ecology of white ibises in coastal South Carolina. *Wilson Bull.* 102:84-98.

Ehrlich, P.R., D.S. Dobkin, and D. Wheye. 1988. *The birder's handbook: a field guide to the natural history of North American birds.* Simon and Shuster, Inc., New York. xxx + 785 pp.

Flcury, B. E., and T. W. Sherry. 1995. Long-term population trends of colonial wading birds in the southern United States: the impact of crayfish aquaculture on Louisiana populations. *Auk* 112:613-632.

Frederick, P. 1987. Chronic tidally-induced nest failure in a colony of white ibises. *Condor* 89:413-419.

Frederick, P. C., and M. W. Collopy. 1989. Nesting success of five ciconiiform species in relation to water conditions in the Florida Everglades. *Auk* 106:625-634.

Fussell, J.O. III. 1994. *A birder's guide to coastal North Carolina.* Chapel Hill and London: The University of North Carolina Press.

Hancock, J. A., J. A. Kushlan, and M. P. Kahl. 1992. *Storks, ibises, and spoonbills off the world.* Academic Press. ca. 464 pp.

Harrison, C. 1978. *A field guide to the nests, eggs and nestlings of North American birds.* Collins, Cleveland, Ohio.

Hilty, S.L., and W.L. Brown. 1986. *A guide to the birds of Colombia.* Princeton University Press, Princeton, New Jersey. 836 pp.

Kaufman K. 1996. *Lives of North American Birds.* Boston, New York: Houghton Mifflin Company.

Kushlan, J. A. 1977. Population energetics of the American white ibis. *Auk* 94:114-122.

Kushlan, J. A. 1979. Feeding ecology and prey selection in the white ibis. *Condor* 81:376-389.

National Geographic Society (NGS). 1983. *Field guide to the birds of North America.* National Geographic Society, Washington, D.C.

Palmer, R. S. (editor). 1962. *Handbook of North American birds. Vol. 1. Loons through flamingos.* Yale University Press, New Haven. 567 pp.

Powell, G. V. N. 1987. Habitat use by wading birds in a subtropical estuary: implications of hydrography. *Auk* 104:740-749.

Root, T. 1988. Atlas of wintering North American birds: An analysis of Christmas Bird Count data. University of Chicago Press. 336 pp.

Shields, M. A., and J. F. Parnell. 1986. Fish crow predation on eggs of the white ibis at Battery Island, North Carolina. *Auk* 103:531-539.

Simpson MB Jr. 1992. Birds of the Blue Ridge Mountains. Chapel Hill and London: University of North Carolina Press.

Spendelow, J.A., and S.R. Patton. 1988. National atlas of coastal waterbird colonies in the contiguous United States: 1976-1982. U.S. Fish and Wildlife Service, Biological Report 88(5). x + 326 pp.

Stiles, F.G., and A.F. Skutch. 1989. A guide to the birds of Costa Rica. Comstock Publ. Associates, Cornell University Press, Ithaca, New York. 511 pp.

Terres, J.K. 1980. The Audubon Society encyclopedia of North American birds. Alfred A. Knopf, New York.

For more information:: SE-GAP Analysis Project / BaSIC
127 David Clark Labs
Dept. of Biology, NCSU
Raleigh, NC 27695-7617
(919) 513-2853
www.basic.ncsu.edu/segap

Compiled: 15 September 2011

This data was compiled and/or developed
by the Southeast GAP Analysis Project at
The Biodiversity and Spatial Information
Center, North Carolina State University.