



SOUTHEAST GAP ANALYSIS PROJECT



Species Modeling Report

White-tailed Kite

Elanus leucurus

Taxa: Avian

Order: Falconiformes

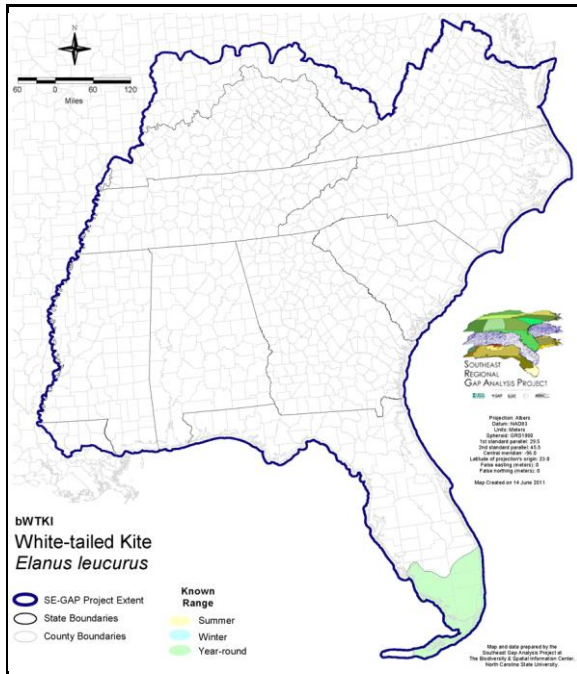
Family: Accipitridae

SE-GAP Spp Code: **bWTKI**

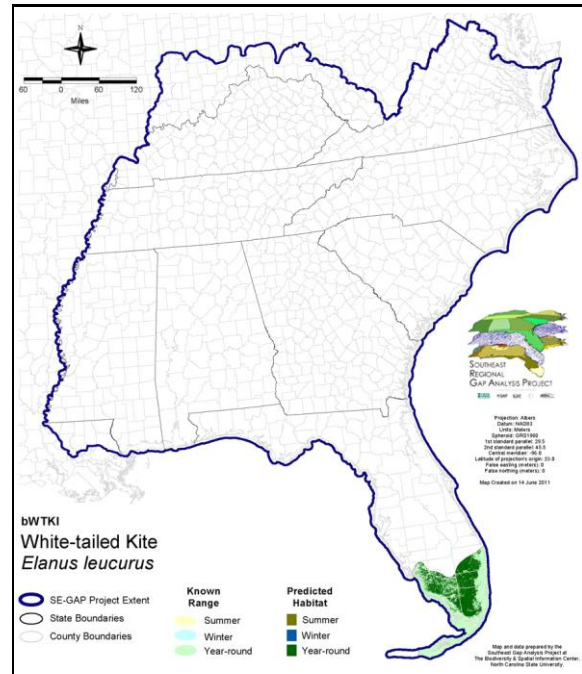
ITIS Species Code: 175282

NatureServe Element Code: ABNKC06010

KNOWN RANGE:



PREDICTED HABITAT:



Range Map Link: http://www.basic.ncsu.edu/segap/datazip/maps/SE_Range_bWTKI.pdf

Predicted Habitat Map Link: http://www.basic.ncsu.edu/segap/datazip/maps/SE_Dist_bWTKI.pdf

GAP Online Tool Link: <http://www.gapservice.ncsu.edu/segap/segap/index2.php?species=bWTKI>

Data Download: http://www.basic.ncsu.edu/segap/datazip/region/vert/bWTKI_se00.zip

PROTECTION STATUS:

Reported on March 14, 2011

Federal Status: ---

State Status: CA (None), ID (P), KY (N), NV (YES), UT (None), BC (8 (2005))

NS Global Rank: G5

NS State Rank: AL (S3B), AR (SNA), AZ (S2B,S2S3N), CA (S3), FL (S1), ID (SNA), IL (SNA), IN (SNA), KS (SNA), KY (SNA), LA (S1B,S1S2N), MS (SNA), MT (SNA), NC (SNA), NM (S2N), NV (SNA), OK (SNA), OR (S2B,S3N), TX (S4B), UT (SNA), WA (S2), WI (SNA), WY (SNA), BC (SNA)

SUMMARY OF PREDICTED HABITAT BY MANAGMENT AND GAP PROTECTION STATUS:

	US FWS		US Forest Service		Tenn. Valley Author.		US DOD/ACOE	
	ha	%	ha	%	ha	%	ha	%
Status 1	8,223.8	< 1	0.0	0	0.0	0	0.0	0
Status 2	0.0	0	0.0	0	0.0	0	0.0	0
Status 3	0.0	0	0.0	0	0.0	0	210.4	< 1
Status 4	0.0	0	0.0	0	0.0	0	0.0	0
Total	8,223.8	< 1	0.0	0	0.0	0	210.4	< 1
	US Dept. of Energy		US Nat. Park Service		NOAA		Other Federal Lands	
	ha	%	ha	%	ha	%	ha	%
Status 1	0.0	0	212,265.2	19	0.0	0	0.0	0
Status 2	0.0	0	0.0	0	603.4	< 1	0.0	0
Status 3	0.0	0	171,229.2	15	0.0	0	0.0	0
Status 4	0.0	0	0.0	0	0.0	0	0.0	0
Total	0.0	0	383,494.4	34	603.4	< 1	0.0	0
	Native Am. Reserv.		State Park/Hist. Park		State WMA/Gameland		State Forest	
	ha	%	ha	%	ha	%	ha	%
Status 1	0.0	0	0.0	0	0.0	0	0.0	0
Status 2	0.0	0	0.0	0	268,314.8	23	0.0	0
Status 3	0.0	0	81,820.6	7	0.0	0	25,100.2	2
Status 4	0.0	0	0.0	0	0.0	0	0.0	0
Total	0.0	0	81,820.6	7	268,314.8	23	25,100.2	2
	State Coastal Reserve		ST Nat.Area/Preserve		Other State Lands		Private Cons. Easemt.	
	ha	%	ha	%	ha	%	ha	%
Status 1	0.0	0	0.0	0	0.0	0	0.0	0
Status 2	0.0	0	0.0	0	0.0	0	0.0	0
Status 3	0.0	0	0.4	< 1	0.0	0	0.0	0
Status 4	0.0	0	0.0	0	0.0	0	0.0	0
Total	0.0	0	0.4	< 1	0.0	0	0.0	0
	Private Land - No Res.		Water		Overall Total			
	ha	%	ha	%	ha	%	ha	%
Status 1	0.0	0	0.0	0	220,488.9 19			
Status 2	0.0	0	0.0	0	268,918.1 24			
Status 3	0.0	0	0.0	0	278,360.8 24			
Status 4	368,143.6	32	6,515.2	< 1	374,658.8 33			
Total	368,143.6	32	6,515.2	< 1	1,142,426.6 100			

GAP Status 1: An area having permanent protection from conversion of natural land cover and a mandated management plan in operation to maintain a natural state within which disturbance events (of natural type, frequency, and intensity) are allowed to proceed without interference or are mimicked through management.

GAP Status 2: An area having permanent protection from conversion of natural land cover and a mandated management plan in operation to maintain a primarily natural state, but which may receive use or management practices that degrade the quality of existing natural communities.

GAP Status 3: An area having permanent protection from conversion of natural land cover for the majority of the area, but subject to extractive uses of either a broad, low-intensity type or localized intense type. It also confers protection to federally listed endangered and threatened species throughout the area.

GAP Status 4: Lack of irrevocable easement or mandate to prevent conversion of natural habitat types to anthropogenic habitat types. Allows for intensive use throughout the tract. Also includes those tracts for which the existence of such restrictions or sufficient information to establish a higher status is unknown.

PREDICTED HABITAT MODEL(S):

Year-round Model:

Habitat Description: White-tailed kites use savanna, open woodland, marshes, partially cleared lands and cultivated fields, mostly in lowland situations (Tropical to Temperate zones) (AOU 1983).

Nests in trees, often near a marsh, usually 6-15 m above the ground in branches near the top of a tree. Generally builds a new nest for each clutch (Palmer 1988).

There is little quantitative research on this species.

Quoted directly from existing state habitat notes - K. Cook, 11Feb05

Selected Map Units:

Functional Group	Map Unit Name
Anthropogenic	Pasture/Hay
Anthropogenic	Row Crop
Anthropogenic	Successional Shrub/Scrub (Clear Cut)
Anthropogenic	Successional Shrub/Scrub (Other)
Anthropogenic	Successional Shrub/Scrub (Utility Swath)
Brackish Tidal Marsh & Wetland	South Florida Everglades Sawgrass Marsh
Coastal Dune & Freshwater Wetland	Southwest Florida Dune and Coastal Grassland
Forest/Woodland	Florida Longleaf Pine Sandhill - Open Understory Modifier
Prairie	Florida Dry Prairie
Wetlands	Central Florida Herbaceous Pondshore
Wetlands	Central Florida Herbaceous Seep
Wetlands	Central Florida Pine Flatwoods
Wetlands	Floridian Highlands Freshwater Marsh
Wetlands	South Florida Bayhead Swamp
Wetlands	South Florida Dwarf Cypress Savanna
Wetlands	South Florida Pine Flatwoods
Wetlands	South Florida Pond-Apple/Popash Slough
Wetlands	South Florida Wet Marl Prairie
Wetlands	South Florida Willow Head

CITATIONS: American Ornithologists' Union (AOU), Committee on Classification and Nomenclature. 1983. Check-list of North American Birds. Sixth Edition. American Ornithologists' Union, Allen Press, Inc., Lawrence, Kansas.

Clark, W. S., and R. C. Banks. 1992. The taxonomic status of the white-tailed kite. *Wilson Bull.* 104:571-579.

Curnutt, J. L. 1989. Nesting of the black-shouldered kite (*ELANUS CAERULEUS*) in Everglades National Park. *Florida Field Nat.* 17:77-79.

Dunk, J. R., and R. J. Cooper. 1994. Territory-size regulation in black-shouldered kites. *Auk* 111:588-595.

Gatz, T. A., et al. 1988. Black-shouldered kite. Pages 48-53 in Glinski et al., eds. *Proc. Southwest Raptor Manage. Symp. and Workshop. National Wildlife Federation Sci. and Tech. Ser. No. 11.*

Johnsgard, P.A. 1990. Hawks, eagles, and falcons of North America. Smithsonian Inst. Press, Washington, D.C. xvi + 403 pp.

Palmer, R. S., editor. 1988. Handbook of North American birds. Vol. 4. [Diurnal raptors, part 1]. Yale University Press, New Haven. vii + 433 pp.

Parkes, K. C. 1958. Specific relationships in the genus *ELANUS*. *Condor* 60:139-140.

Pendleton, B. A. Giron, et al. 1987. Raptor management techniques manual. National Wildlife Federation, Sci. and Tech. Ser. No. 10. 420 pp.

Pruett-Jones, S. G., M. Pruet-Jones, and R. L. Knight. 1980. The white-tailed kite in North and Middle America: current status and recent population changes. *Am. Birds* 34:682-688.

Ridgely, R. S., and J. A. Gwynne, Jr. 1989. A guide to the birds of Panama with Costa Rica, Nicaragua, and Honduras. Second edition. Princeton Univ. Press, Princeton, New Jersey. 534 pp.

Root, T. 1988. Atlas of wintering North American birds:An analysis of Christmas Bird Count data. University of Chicago Press. 336 pp.

Sibley, C.G., and B.L. Monroe. 1990. Distribution and taxonomy of birds of the world. Yale University Press, New Haven, Connecticut. xxiv + 1111 pp.

Stiles, F.G., and A.F. Skutch. 1989. A guide to the birds of Costa Rica. Comstock Publ. Associates, Cornell University Press, Ithaca, New York. 511 pp.

Terres, J.K. 1980. The Audubon Society encyclopedia of North American birds. Alfred A. Knopf, New York.

For more information:: SE-GAP Analysis Project / BaSIC
127 David Clark Labs
Dept. of Biology, NCSU
Raleigh, NC 27695-7617
(919) 513-2853
www.basic.ncsu.edu/segap

Compiled: 15 September 2011

This data was compiled and/or developed
by the Southeast GAP Analysis Project at
The Biodiversity and Spatial Information
Center, North Carolina State University.