



SOUTHEAST GAP ANALYSIS PROJECT



Species Modeling Report

American Mink

Mustela vison

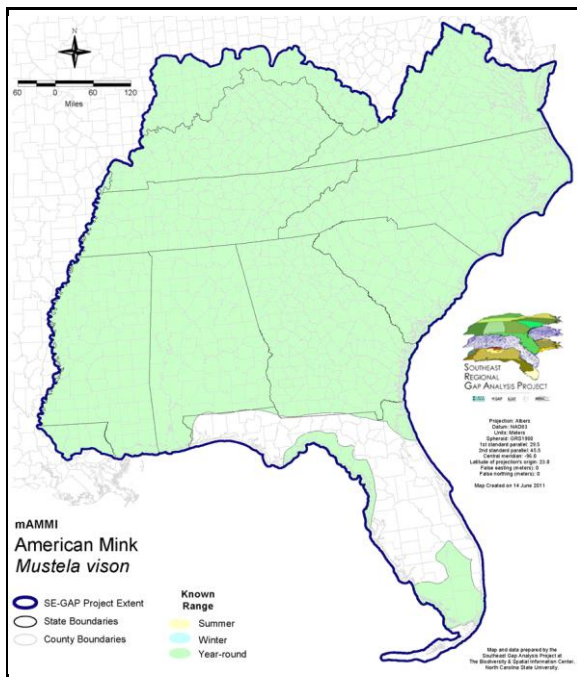
Taxa: Mammalian
Order: Carnivora
Family: Mustelidae

SE-GAP Spp Code: **mAMMI**

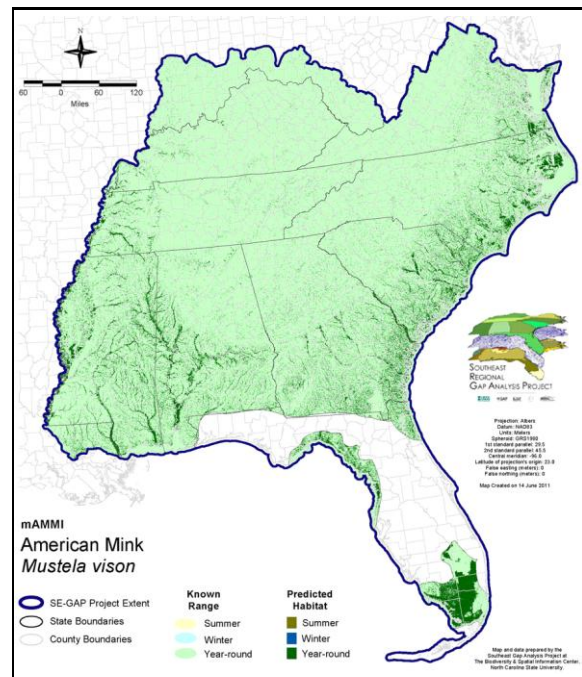
ITIS Species Code: 180553

NatureServe Element Code: AMAJF02050

KNOWN RANGE:



PREDICTED HABITAT:



Range Map Link: http://www.basic.ncsu.edu/segap/datazip/maps/SE_Range_mAMMI.pdf

Predicted Habitat Map Link: http://www.basic.ncsu.edu/segap/datazip/maps/SE_Dist_mAMMI.pdf

GAP Online Tool Link: <http://www.gapservice.ncsu.edu/segap/segap/index2.php?species=mAMMI>

Data Download: http://www.basic.ncsu.edu/segap/datazip/region/vert/mAMMI_se00.zip

PROTECTION STATUS:

Reported on March 14, 2011

Federal Status: ---

State Status: AL (FB), ID (G), KY (N), NV (YES), NY (GS), RI (Not Listed), UT (None), BC (4 (2005)), QC (Non suivie)

NS Global Rank: G5

NS State Rank: AK (S5), AL (S5), AR (S5), CA (S5), CO (S5), CT (S5), DC (S1), DE (S3), FL (S5), GA (S5), IA (S4), ID (S5), IL (S5), IN (S4), KS (S3), KY (S5), LA (S5), MA (S5), MD (S4), ME (S5), MI (S5), MN (SNR), MO (SNR), MS (S5), MT (S5), NC (S4), ND (SNR), NE (S5), NH (S5), NJ (S5), NM (S1), NV (S4), NY (S5), OH (SNR), OK (S4), OR (S5), PA (S5), RI (S5), SC (SNR), SD (S5), TN (S5), TX (S4), UT (S3S4), VA (S5), VT (S5), WA (S5), WI (S5), WV (S5), WY (S5), AB (S5), BC (S5), LB (S5), MB (S5), NB (S5), NF (SNA), NS (S5), NT (SNR), NU (SNR), ON (S4), PE (S5), QC (S5), SK (S5), YT (S5)

SUMMARY OF PREDICTED HABITAT BY MANAGMENT AND GAP PROTECTION STATUS:

	US FWS		US Forest Service		Tenn. Valley Author.		US DOD/ACOE	
	ha	%	ha	%	ha	%	ha	%
Status 1	124,256.8	1	5,809.2	< 1	0.0	0	0.0	0
Status 2	195,629.9	2	8,285.3	< 1	0.0	0	1,734.0	< 1
Status 3	1,919.6	< 1	193,297.4	2	6,536.0	< 1	105,821.7	1
Status 4	26.5	< 1	0.0	0	0.0	0	19.2	< 1
Total	321,832.7	3	207,392.0	2	6,536.0	< 1	107,574.9	1
	US Dept. of Energy		US Nat. Park Service		NOAA		Other Federal Lands	
	ha	%	ha	%	ha	%	ha	%
Status 1	0.0	0	371,483.9	4	997.3	< 1	0.0	0
Status 2	0.0	0	23,476.5	< 1	37,342.0	< 1	0.0	0
Status 3	16,523.7	< 1	240,051.6	2	0.0	0	1,109.1	< 1
Status 4	0.0	0	2.0	2	0.0	0	0.0	0
Total	16,523.7	< 1	635,014.4	6	38,339.3	< 1	1,109.1	< 1
	Native Am. Reserv.		State Park/Hist. Park		State WMA/Gameland		State Forest	
	ha	%	ha	%	ha	%	ha	%
Status 1	0.0	0	163.3	< 1	1.4	< 1	0.0	0
Status 2	0.0	0	1,014.0	< 1	567,503.7	5	24.3	< 1
Status 3	1,998.9	< 1	108,461.8	1	107,484.9	1	45,390.0	< 1
Status 4	0.0	0	0.0	0	9,590.4	< 1	0.3	< 1
Total	1,998.9	< 1	109,639.1	1	684,580.5	6	45,414.5	< 1
	State Coastal Reserve		ST Nat.Area/Preserve		Other State Lands		Private Cons. Easemt.	
	ha	%	ha	%	ha	%	ha	%
Status 1	0.0	0	2,280.1	< 1	0.0	0	0.0	0
Status 2	35,893.8	< 1	57,269.2	< 1	2.1	< 1	309.0	< 1
Status 3	0.0	0	1,661.2	< 1	1,476.0	< 1	28,135.6	< 1
Status 4	0.0	0	0.0	0	713.0	< 1	0.0	0
Total	35,893.8	< 1	61,210.4	< 1	2,191.1	< 1	28,444.6	< 1
	Private Land - No Res.		Water		Overall Total			
	ha	%	ha	%	ha	%	ha	%
Status 1	0.0	< 1	0.0	0	504,992.2 5			
Status 2	0.8	< 1	0.0	< 1	928,484.7 9			
Status 3	586.2	< 1	0.0	0	860,453.7 10			
Status 4	7,984,932.9	76	52,889.9	< 1	8,057,738.5 76			
Total	7,985,520.1	76	52,890.1	< 1	10,351,669.1 100			

GAP Status 1: An area having permanent protection from conversion of natural land cover and a mandated management plan in operation to maintain a natural state within which disturbance events (of natural type, frequency, and intensity) are allowed to proceed without interference or are mimicked through management.

GAP Status 2: An area having permanent protection from conversion of natural land cover and a mandated management plan in operation to maintain a primarily natural state, but which may receive use or management practices that degrade the quality of existing natural communities.

GAP Status 3: An area having permanent protection from conversion of natural land cover for the majority of the area, but subject to extractive uses of either a broad, low-intensity type or localized intense type. It also confers protection to federally listed endangered and threatened species throughout the area.

GAP Status 4: Lack of irrevocable easement or mandate to prevent conversion of natural habitat types to anthropogenic habitat types. Allows for intensive use throughout the tract. Also includes those tracts for which the existence of such restrictions or sufficient information to establish a higher status is unknown.

PREDICTED HABITAT MODEL(S):

Year-round Model:

Habitat Description: The mink are semi-aquatic mammals that can be found near a variety of surface water habitats (Whitaker and Hamilton 1998) including lakes, streams, ponds, swamps, and marshes (USFWS 1978). They generally avoid beaches due to low prey availability (Lariviere 1999). Mink favors forested, permanent or semipermanent wetlands with abundant cover, marshes, and riparian zones (NatureServe 2005) and will also inhabit swamps, and freshwater, brackish or coastal salt marshes (Humphrey 1992, Layne 1984). Amy Silvano 24june 05

Ecosystem Classifiers: all wetland environments (excluding flatwoods & coastal dunes). Amy Silvano 24jun05

NOTE: From NatureServe: Wozencraft (in Wilson and Reeder 2005) cited several sources supporting placement of the American mink and sea mink in the genus Neovison rather than in Mustela.

Hydrography Mask:

- Utilizes flowing water features with buffers of 60m from and 60m into selected water features.
- Utilizes open water features with buffers of 60m from and 60m into selected water features.
- Utilizes wet vegetation features with buffers of 60m from and unlimited into selected vegetation features.

Selected Map Units:

Functional Group	Map Unit Name
Brackish Tidal Marsh & Wetland	Atlantic Coastal Plain Central Salt and Brackish Tidal Marsh
Brackish Tidal Marsh & Wetland	Atlantic Coastal Plain Embayed Region Tidal Salt and Brackish Marsh
Brackish Tidal Marsh & Wetland	Atlantic Coastal Plain Indian River Lagoon Tidal Marsh
Brackish Tidal Marsh & Wetland	Atlantic Coastal Plain Northern Sea-Level Fen
Brackish Tidal Marsh & Wetland	Atlantic Coastal Plain Northern Tidal Salt Marsh
Brackish Tidal Marsh & Wetland	Atlantic Coastal Plain Northern Tidal Wooded Swamp
Brackish Tidal Marsh & Wetland	Atlantic Coastal Plain Southern Tidal Wooded Swamp
Brackish Tidal Marsh & Wetland	East Gulf Coastal Plain Tidal Wooded Swamp
Brackish Tidal Marsh & Wetland	Florida Big Bend Salt-Brackish Tidal Marsh
Brackish Tidal Marsh & Wetland	Mississippi Sound Salt and Brackish Tidal Marsh
Brackish Tidal Marsh & Wetland	South Florida Everglades Sawgrass Marsh
Brackish Tidal Marsh & Wetland	South Florida Mangrove Swamp
Brackish Tidal Marsh & Wetland	Southwest Florida Perched Barriers Salt Swamp and Lagoon - Mangrove Modifier
Brackish Tidal Marsh & Wetland	Southwest Florida Perched Barriers Salt Swamp and Lagoon - Marsh Modifier
Coastal Dune & Freshwater Wetland	Atlantic and Gulf Coastal Plain Interdunal Wetland
Freshwater Tidal Marsh & Wetland	Atlantic Coastal Plain Central Fresh-Oligohaline Tidal Marsh
Freshwater Tidal Marsh & Wetland	Atlantic Coastal Plain Embayed Region Tidal Freshwater Marsh
Freshwater Tidal Marsh & Wetland	Atlantic Coastal Plain Northern Fresh and Oligohaline Tidal Marsh
Freshwater Tidal Marsh & Wetland	Florida Big Bend Fresh-Oligohaline Tidal Marsh
Water	Open Water (Brackish/Salt)
Water	Open Water (Fresh)
Wetlands	Atlantic Coastal Plain Blackwater Stream Floodplain Forest - Forest Modifier
Wetlands	Atlantic Coastal Plain Blackwater Stream Floodplain Forest - Herbaceous Modifier
Wetlands	Atlantic Coastal Plain Brownwater Stream Floodplain Forest
Wetlands	Atlantic Coastal Plain Clay-Based Carolina Bay Forested Wetland
Wetlands	Atlantic Coastal Plain Clay-Based Carolina Bay Herbaceous Wetland
Wetlands	Atlantic Coastal Plain Depression Pondshore
Wetlands	Atlantic Coastal Plain Large Natural Lakeshore
Wetlands	Atlantic Coastal Plain Nonriverine Swamp and Wet Hardwood Forest - Taxodium/Nyssa Modifier
Wetlands	Atlantic Coastal Plain Nonriverine Swamp and Wet Hardwood Forest - Oak Dominated Modifier
Wetlands	Atlantic Coastal Plain Northern Basin Peat Swamp
Wetlands	Atlantic Coastal Plain Northern Basin Swamp and Wet Hardwood Forest
Wetlands	Atlantic Coastal Plain Northern Pondshore

Wetlands	Atlantic Coastal Plain Peatland Pocosin
Wetlands	Atlantic Coastal Plain Sandhill Seep
Wetlands	Atlantic Coastal Plain Small Blackwater River Floodplain Forest
Wetlands	Atlantic Coastal Plain Small Brownwater River Floodplain Forest
Wetlands	Atlantic Coastal Plain Streamhead Seepage Swamp, Pocosin, and Baygall
Wetlands	Atlantic Coastal Plain Xeric River Dune
Wetlands	Central Appalachian Floodplain - Forest Modifier
Wetlands	Central Appalachian Floodplain - Herbaceous Modifier
Wetlands	Central Appalachian Riparian - Forest Modifier
Wetlands	Central Appalachian Riparian - Herbaceous Modifier
Wetlands	Central Florida Herbaceous Pondshore
Wetlands	Central Florida Herbaceous Seep
Wetlands	Central Interior Highlands and Appalachian Sinkhole and Depression Pond
Wetlands	Cumberland Riverscour
Wetlands	East Gulf Coastal Plain Interior Shrub Bog
Wetlands	East Gulf Coastal Plain Large River Floodplain Forest - Forest Modifier
Wetlands	East Gulf Coastal Plain Large River Floodplain Forest - Herbaceous Modifier
Wetlands	East Gulf Coastal Plain Northern Depression Pondshore
Wetlands	East Gulf Coastal Plain Northern Seepage Swamp
Wetlands	East Gulf Coastal Plain Small Stream and River Floodplain Forest
Wetlands	East Gulf Coastal Plain Southern Depression Pondshore
Wetlands	Floridian Highlands Freshwater Marsh
Wetlands	Lower Mississippi River Bottomland and Floodplain Forest
Wetlands	Lower Mississippi River Bottomland Depressions - Forest Modifier
Wetlands	Lower Mississippi River Bottomland Depressions - Herbaceous Modifier
Wetlands	Mississippi River Low Floodplain (Bottomland) Forest
Wetlands	Mississippi River Riparian Forest
Wetlands	North-Central Appalachian Acidic Swamp
Wetlands	North-Central Appalachian Seepage Fen
Wetlands	North-Central Interior and Appalachian Rich Swamp
Wetlands	South Florida Bayhead Swamp
Wetlands	South Florida Cypress Dome
Wetlands	South Florida Freshwater Slough and Gator Hole
Wetlands	South Florida Hardwood Hammock
Wetlands	South Florida Pond-Apple/Popash Slough
Wetlands	South Florida Willow Head
Wetlands	South-Central Interior Large Floodplain - Forest Modifier
Wetlands	South-Central Interior Large Floodplain - Herbaceous Modifier
Wetlands	South-Central Interior Small Stream and Riparian
Wetlands	Southern and Central Appalachian Bog and Fen
Wetlands	Southern Appalachian Seepage Wetland
Wetlands	Southern Coastal Plain Blackwater River Floodplain Forest
Wetlands	Southern Coastal Plain Herbaceous Seepage Bog
Wetlands	Southern Coastal Plain Hydric Hammock
Wetlands	Southern Coastal Plain Nonriverine Basin Swamp
Wetlands	Southern Coastal Plain Nonriverine Cypress Dome
Wetlands	Southern Coastal Plain Seepage Swamp and Baygall
Wetlands	Southern Coastal Plain Spring-run Stream Aquatic Vegetation
Wetlands	Southern Piedmont Large Floodplain Forest - Forest Modifier
Wetlands	Southern Piedmont Large Floodplain Forest - Herbaceous Modifier
Wetlands	Southern Piedmont Seepage Wetland
Wetlands	Southern Piedmont Small Floodplain and Riparian Forest
Wetlands	Southern Piedmont/Ridge and Valley Upland Depression Swamp
Wetlands	Unconsolidated Shore (Lake/River/Pond)
Wetlands	Western Highland Rim Seepage Fen

- CITATIONS:** Baker, Rollin H. 1983. Michigan mammals. Michigan State University Press. 642 pp.
- Banfield, A.W.F. 1974. The mammals of Canada. University of Toronto Press, Toronto.
- Brown, L. N. 1997. A guide to the mammals of the southeastern United States. University of Tennessee Press, Knoxville. xiv + 236 pp.
- Caire, W., J. D. Tyler, B. P. Glass, and M. A. Mares. Z. Marsh (illustrator). 1989. Mammals of Oklahoma. University of Oklahoma Press, Norman. Oklahoma. 567 pp.
- Enders, R.K. 1952. Reproduction in the mink (*Mustela vison*) -- Proc. American Philos. Soc., 96:691-755.
- Godin, A.J. 1977. Wild Mammals of New England. Johns Hopkins University Press, Baltimore. 304 pp.
- Golley, F.B. 1962. Mammals of Georgia: A study of their distribution and functional role in the ecosystem. University of Georgia Press, Athens, GA. 218 pp.
- Hall, E. R. 1981. The Mammals of North America. Second edition. 2 Volumes. John Wiley and Sons, New York, New York. 1181 p.
- Hall, E.R. 1951. American Weasels. Univ. Kansas Publication, Museum Natural History, 4:1-466.
- Hamilton, William J., Jr., and John O. Whitaker, Jr. 1979. Mammals of the eastern United States. Cornell Univ. Press, Ithaca, New York. 346 pp.
- Humphrey, S. R., and H. W. Setzer. 1989. Geographic variation and taxonomic revision of mink (*MUSTELA VISON*) in Florida. J. Mamm. 70:241-252.
- Jones, J. K., Jr., et al. 1992. Revised checklist of North American mammals north of Mexico, 1991. Occas. Pap. Mus., Texas Tech Univ. (146):1-23.
- Lariviere, S. 1999. *Mustela vison*. Am. Soc. Mammalogists, Mammalian Species No. 608 pp. 1-9.
- Layne, J. N., editor. 1978. Rare and endangered biota of Florida. Vol. 1. Mammals. State of Florida Game and Freshwater Fish Commission. xx + 52 pp.
- Lee, D. S., L. B. Funderburg Jr., and M. K. Clark. 1982. A distributional survey of North Carolina mammals. Occasional Papers of the North Carolina Biological Survey, No. 1982-10. North Carolina State. Mus. Nat. Hist., Raleigh, North Carolina. 72 pp.
- Nowak, R. M. 1991. Walker's mammals of the world. Fifth edition. Vols. I and II. Johns Hopkins Univ. Press, Baltimore. 1629 pp.
- Schwartz, Charles W., and Elizabeth R. Schwartz. 1981. The wild mammals of Missouri. University of Missouri Press, Columbia. 356 pp.
- Webster, W. D., J. F. Parnell and W. C. Biggs Jr. 1985. Mammals of the Carolinas, Virginia, and Maryland. The University of North Carolina Press, Chapel Hill, NC.
- Whitaker, J. O., Jr. 1980. The Audubon Society field guide to North American mammals. Alfred A. Knopf, New York. 745 pp.
- Whitaker, J.O. Jr. and W.J. Hamilton, Jr. 1998. Mammals of the eastern United States. Cornell Univ. Press, Ithaca, New York. 583 pp.
- Wilson, D. E., and D. M. Reeder (editors). 1993. Mammal Species of the World: a Taxonomic and Geographic Reference. Second Edition. Smithsonian Institution Press, Washington, DC. xviii + 1206 pp.
- Wilson, D. E., and D. M. Reeder (editors). 2005. Mammal species of the world: a taxonomic and geographic reference. Third edition. The Johns Hopkins University Press, Baltimore. Two volumes. 2,142 pp.

For more information:: SE-GAP Analysis Project / BaSIC
127 David Clark Labs
Dept. of Biology, NCSU
Raleigh, NC 27695-7617
(919) 513-2853
www.basic.ncsu.edu/segap

Compiled: 15 September 2011

This data was compiled and/or developed
by the Southeast GAP Analysis Project at
The Biodiversity and Spatial Information
Center, North Carolina State University.