



# SOUTHEAST GAP ANALYSIS PROJECT



## Species Modeling Report

### Feral Hog

*Sus scrofa*

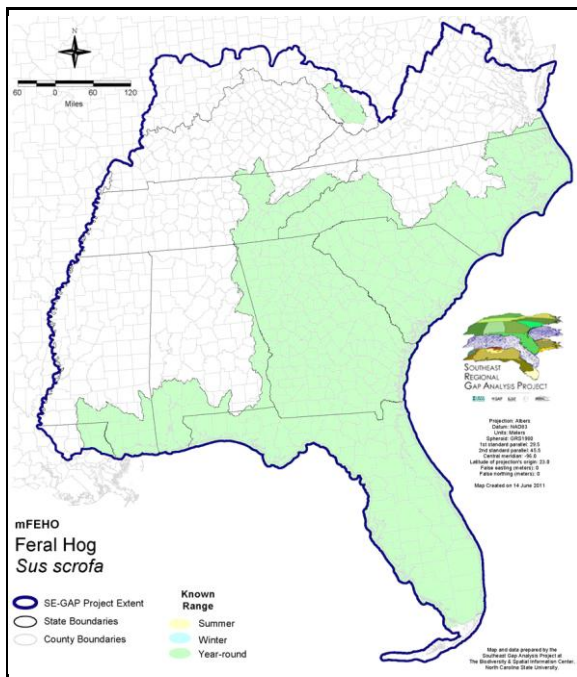
Taxa: Mammalian  
 Order: Artiodactyla  
 Family: Suidae

SE-GAP Spp Code: **mFEHO**

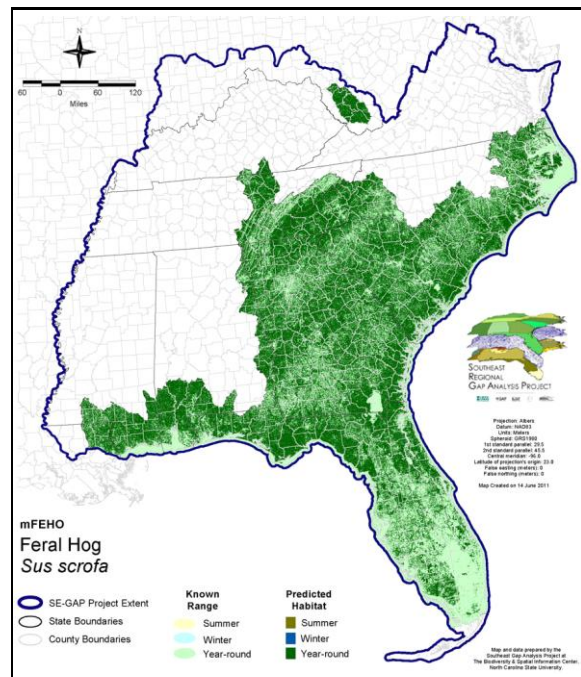
ITIS Species Code: 180722

NatureServe Element Code: AMALA01010

#### KNOWN RANGE:



#### PREDICTED HABITAT:



Range Map Link: [http://www.basic.ncsu.edu/segap/datazip/maps/SE\\_Range\\_mFEHO.pdf](http://www.basic.ncsu.edu/segap/datazip/maps/SE_Range_mFEHO.pdf)

Predicted Habitat Map Link: [http://www.basic.ncsu.edu/segap/datazip/maps/SE\\_Dist\\_mFEHO.pdf](http://www.basic.ncsu.edu/segap/datazip/maps/SE_Dist_mFEHO.pdf)

GAP Online Tool Link: <http://www.gapservice.ncsu.edu/segap/segap/index2.php?species=mFEHO>

Data Download: [http://www.basic.ncsu.edu/segap/datazip/region/vert/mFEHO\\_se00.zip](http://www.basic.ncsu.edu/segap/datazip/region/vert/mFEHO_se00.zip)

#### PROTECTION STATUS:

Reported on March 14, 2011

Federal Status: ---

State Status: AL (GA), KY (N)

NS Global Rank: G5

NS State Rank: AL (SNA), AZ (SNA), FL (SNA), GA (SNA), KY (SNA), MS (SNA), NC (SNA), NM (SNA), TN (SNA), TX (SNA), VA (SNA), WV (SNA), AB (SNA), SK (SNA)

**SUMMARY OF PREDICTED HABITAT BY MANAGMENT AND GAP PROTECTION STATUS:**

	US FWS		US Forest Service		Tenn. Valley Author.		US DOD/ACOE	
	ha	%	ha	%	ha	%	ha	%
Status 1	104,064.5	< 1	30,010.4	< 1	0.0	0	0.0	0
Status 2	159,857.6	< 1	145,612.7	< 1	0.0	0	59.9	< 1
Status 3	856.6	< 1	1,728,854.3	5	17,742.8	< 1	517,279.6	1
Status 4	28.6	< 1	< 0.1	< 1	0.0	0	0.0	0
Total	264,807.4	< 1	1,904,477.5	5	17,742.8	< 1	517,339.5	1
	US Dept. of Energy		US Nat. Park Service		NOAA		Other Federal Lands	
	ha	%	ha	%	ha	%	ha	%
Status 1	0.0	0	234,336.4	< 1	96.8	< 1	12,913.8	< 1
Status 2	0.0	0	13,439.4	< 1	9,973.3	< 1	53.7	< 1
Status 3	76,287.5	< 1	226,252.9	< 1	0.0	0	5,802.6	< 1
Status 4	0.0	0	1.0	4	0.0	0	0.0	0
Total	76,287.5	< 1	474,030.3	1	10,070.0	< 1	18,770.1	< 1
	Native Am. Reserv.		State Park/Hist. Park		State WMA/Gameland		State Forest	
	ha	%	ha	%	ha	%	ha	%
Status 1	0.0	0	996.8	< 1	0.0	0	0.0	0
Status 2	0.0	0	19,835.9	< 1	582,870.6	2	0.0	0
Status 3	17,690.4	< 1	548,087.1	1	116,782.5	< 1	396,529.0	1
Status 4	0.0	0	< 0.1	< 1	36,702.0	< 1	48.2	< 1
Total	17,690.4	< 1	568,920.0	2	736,355.1	2	396,577.2	1
	State Coastal Reserve		ST Nat.Area/Preserve		Other State Lands		Private Cons. Easemt.	
	ha	%	ha	%	ha	%	ha	%
Status 1	0.0	0	2,541.3	< 1	0.0	0	0.0	0
Status 2	13,784.5	< 1	60,455.3	< 1	0.3	< 1	2,290.9	< 1
Status 3	0.0	0	20,976.8	< 1	30,422.3	< 1	104,688.1	< 1
Status 4	0.0	0	0.0	0	3,669.3	< 1	0.0	0
Total	13,784.5	< 1	83,973.4	< 1	34,091.9	< 1	106,979.0	< 1
	Private Land - No Res.		Water		Overall Total			
	ha	%	ha	%	ha	%	ha	%
Status 1	0.0	0	0.0	0	384,960.1 1			
Status 2	0.2	< 1	0.0	4	1,008,234.5 3			
Status 3	1,202.5	< 1	1.1	< 1	3,809,456.1 15			
Status 4	29,528,149.5	81	24,518.3	< 1	29,629,791.0 81			
Total	29,529,352.2	81	24,519.6	< 1	34,832,441.6 100			

GAP Status 1: An area having permanent protection from conversion of natural land cover and a mandated management plan in operation to maintain a natural state within which disturbance events (of natural type, frequency, and intensity) are allowed to proceed without interference or are mimicked through management.

GAP Status 2: An area having permanent protection from conversion of natural land cover and a mandated management plan in operation to maintain a primarily natural state, but which may receive use or management practices that degrade the quality of existing natural communities.

GAP Status 3: An area having permanent protection from conversion of natural land cover for the majority of the area, but subject to extractive uses of either a broad, low-intensity type or localized intense type. It also confers protection to federally listed endangered and threatened species throughout the area.

GAP Status 4: Lack of irrevocable easement or mandate to prevent conversion of natural habitat types to anthropogenic habitat types. Allows for intensive use throughout the tract. Also includes those tracts for which the existence of such restrictions or sufficient information to establish a higher status is unknown.

## PREDICTED HABITAT MODEL(S):

### Year-round Model:

Habitat Description: Densely forested mountainous terrain, brushlands, dry ridges, swamps; sometimes in fields, marshes. Often in mixed hardwood forest and bottomlands with permanent water source. Seasonal changes in habitat use are linked to food availability. "In Florida, the wild pig usually inhabits areas with a mixture of habitats, including relatively open areas for foraging and deser areas for testing. In the southern Appalachians, it frequents the higher elevations, where it lives in mixed wooded and open areas." (Whitaker and Hamilton 1998) M. Rubino, 18jan05.

### Selected Map Units:

Functional Group	Map Unit Name
Anthropogenic	Deciduous Plantations
Anthropogenic	Evergreen Plantations
Anthropogenic	Successional Grassland/Herbaceous
Anthropogenic	Successional Grassland/Herbaceous (Other)
Anthropogenic	Successional Grassland/Herbaceous (Utility Swath)
Anthropogenic	Successional Shrub/Scrub (Clear Cut)
Anthropogenic	Successional Shrub/Scrub (Other)
Anthropogenic	Successional Shrub/Scrub (Utility Swath)
Forest/Woodland	Alabama Ketona Glade and Woodland
Forest/Woodland	Allegheny-Cumberland Dry Oak Forest and Woodland
Forest/Woodland	Allegheny-Cumberland Dry Oak Forest and Woodland - Hardwood Modifier
Forest/Woodland	Allegheny-Cumberland Dry Oak Forest and Woodland - Pine Modifier
Forest/Woodland	Appalachian Hemlock-Hardwood Forest
Forest/Woodland	Appalachian Serpentine Woodland
Forest/Woodland	Appalachian Shale Barrens
Forest/Woodland	Atlantic Coastal Plain Central Maritime Forest
Forest/Woodland	Atlantic Coastal Plain Dry and Dry-Mesic Oak Forest
Forest/Woodland	Atlantic Coastal Plain Fall-Line Sandhills Longleaf Pine Woodland - Loblolly Modifier
Forest/Woodland	Atlantic Coastal Plain Fall-line Sandhills Longleaf Pine Woodland - Offsite Hardwood Modifier
Forest/Woodland	Atlantic Coastal Plain Fall-line Sandhills Longleaf Pine Woodland - Open Understory Modifier
Forest/Woodland	Atlantic Coastal Plain Fall-line Sandhills Longleaf Pine Woodland - Scrub/Shrub Understory Modifier
Forest/Woodland	Atlantic Coastal Plain Mesic Hardwood and Mixed Forest
Forest/Woodland	Atlantic Coastal Plain Northern Maritime Forest
Forest/Woodland	Atlantic Coastal Plain Northern Mixed Oak-Heath Forest
Forest/Woodland	Atlantic Coastal Plain Southern Maritime Forest
Forest/Woodland	Atlantic Coastal Plain Upland Longleaf Pine Woodland
Forest/Woodland	Central and Southern Appalachian Montane Oak Forest
Forest/Woodland	Central and Southern Appalachian Northern Hardwood Forest
Forest/Woodland	Central and Southern Appalachian Spruce-Fir Forest
Forest/Woodland	Central Appalachian Alkaline Glade and Woodland
Forest/Woodland	Central Appalachian Oak and Pine Forest
Forest/Woodland	Central Appalachian Pine-Oak Rocky Woodland
Forest/Woodland	Central Interior Highlands Calcareous Glade and Barrens
Forest/Woodland	Central Interior Highlands Dry Acidic Glade and Barrens
Forest/Woodland	Cumberland Sandstone Glade and Barrens
Forest/Woodland	East Gulf Coastal Plain Interior Shortleaf Pine-Oak Forest - Hardwood Modifier
Forest/Woodland	East Gulf Coastal Plain Interior Shortleaf Pine-Oak Forest - Mixed Modifier
Forest/Woodland	East Gulf Coastal Plain Interior Shortleaf Pine-Oak Forest - Pine Modifier
Forest/Woodland	East Gulf Coastal Plain Interior Upland Longleaf Pine Woodland - Loblolly Modifier
Forest/Woodland	East Gulf Coastal Plain Interior Upland Longleaf Pine Woodland - Offsite Hardwood Modifier
Forest/Woodland	East Gulf Coastal Plain Interior Upland Longleaf Pine Woodland - Open Understory Modifier
Forest/Woodland	East Gulf Coastal Plain Interior Upland Longleaf Pine Woodland - Scrub/Shrub Modifier
Forest/Woodland	East Gulf Coastal Plain Limestone Forest

Forest/Woodland	East Gulf Coastal Plain Maritime Forest
Forest/Woodland	East Gulf Coastal Plain Northern Dry Upland Hardwood Forest
Forest/Woodland	East Gulf Coastal Plain Northern Dry Upland Hardwood Forest - Offsite Pine Modifier
Forest/Woodland	East Gulf Coastal Plain Northern Loess Bluff Forest
Forest/Woodland	East Gulf Coastal Plain Northern Loess Plain Oak-Hickory Upland - Hardwood Modifier
Forest/Woodland	East Gulf Coastal Plain Northern Loess Plain Oak-Hickory Upland - Juniper Modifier
Forest/Woodland	East Gulf Coastal Plain Northern Mesic Hardwood Forest
Forest/Woodland	East Gulf Coastal Plain Southern Loess Bluff Forest
Forest/Woodland	East Gulf Coastal Plain Southern Mesic Slope Forest
Forest/Woodland	Florida Longleaf Pine Sandhill - Open Understory Modifier
Forest/Woodland	Florida Longleaf Pine Sandhill - Scrub/Shrub Understory Modifier
Forest/Woodland	Mississippi Delta Maritime Forest
Forest/Woodland	Nashville Basin Limestone Glade
Forest/Woodland	Northeastern Interior Dry Oak Forest - Mixed Modifier
Forest/Woodland	Northeastern Interior Dry Oak Forest - Virginia/Pitch Pine Modifier
Forest/Woodland	Northeastern Interior Dry Oak Forest-Hardwood Modifier
Forest/Woodland	Northern Atlantic Coastal Plain Dry Hardwood Forest
Forest/Woodland	Ridge and Valley Calcareous Valley Bottom Glade and Woodland
Forest/Woodland	South Florida Pine Rockland
Forest/Woodland	South-Central Interior Mesophytic Forest
Forest/Woodland	Southeast Florida Coastal Strand and Maritime Hammock
Forest/Woodland	Southeastern Interior Longleaf Pine Woodland
Forest/Woodland	Southern and Central Appalachian Cove Forest
Forest/Woodland	Southern and Central Appalachian Mafic Glade and Barrens
Forest/Woodland	Southern and Central Appalachian Oak Forest
Forest/Woodland	Southern and Central Appalachian Oak Forest - Xeric
Forest/Woodland	Southern Appalachian Low Mountain Pine Forest
Forest/Woodland	Southern Appalachian Montane Pine Forest and Woodland
Forest/Woodland	Southern Coastal Plain Dry Upland Hardwood Forest
Forest/Woodland	Southern Coastal Plain Oak Dome and Hammock
Forest/Woodland	Southern Interior Low Plateau Dry-Mesic Oak Forest
Forest/Woodland	Southern Interior Low Plateau Dry-Mesic Oak Forest - Evergreen Modifier
Forest/Woodland	Southern Piedmont Dry Oak-(Pine) Forest - Hardwood Modifier
Forest/Woodland	Southern Piedmont Dry Oak-(Pine) Forest - Loblolly Pine Modifier
Forest/Woodland	Southern Piedmont Dry Oak-(Pine) Forest - Mixed Modifier
Forest/Woodland	Southern Piedmont Dry Oak-Heath Forest - Hardwood Modifier
Forest/Woodland	Southern Piedmont Dry Oak-Heath Forest - Mixed Modifier
Forest/Woodland	Southern Piedmont Dry Oak-Heath Forest - Virginia/Pitch Pine Modifier
Forest/Woodland	Southern Piedmont Glade and Barrens
Forest/Woodland	Southern Piedmont Mafic Hardpan Woodland
Forest/Woodland	Southern Piedmont Mesic Forest
Forest/Woodland	Southern Piedmont Northern Triassic Basin Dry Forest
Forest/Woodland	Southern Ridge and Valley Dry Calcareous Forest
Forest/Woodland	Southern Ridge and Valley Dry Calcareous Forest - Hardwood Modifier
Forest/Woodland	Southern Ridge and Valley Dry Calcareous Forest - Pine Modifier
Forest/Woodland	Southwest Florida Coastal Strand and Maritime Hammock
Wetlands	Atlantic Coastal Plain Blackwater Stream Floodplain Forest - Forest Modifier
Wetlands	Atlantic Coastal Plain Brownwater Stream Floodplain Forest
Wetlands	Atlantic Coastal Plain Clay-Based Carolina Bay Forested Wetland
Wetlands	Atlantic Coastal Plain Nonriverine Swamp and Wet Hardwood Forest - Taxodium/Nyssa Modifier
Wetlands	Atlantic Coastal Plain Nonriverine Swamp and Wet Hardwood Forest - Oak Dominated Modifier
Wetlands	Atlantic Coastal Plain Northern Basin Peat Swamp
Wetlands	Atlantic Coastal Plain Northern Basin Swamp and Wet Hardwood Forest
Wetlands	Atlantic Coastal Plain Northern Wet Longleaf Pine Savanna and Flatwoods
Wetlands	Atlantic Coastal Plain Peatland Pocosin
Wetlands	Atlantic Coastal Plain Small Blackwater River Floodplain Forest

Wetlands	Atlantic Coastal Plain Small Brownwater River Floodplain Forest
Wetlands	Atlantic Coastal Plain Southern Wet Pine Savanna and Flatwoods
Wetlands	Atlantic Coastal Plain Streamhead Seepage Swamp, Pocosin, and Baygall
Wetlands	Central Appalachian Floodplain - Forest Modifier
Wetlands	Central Appalachian Riparian - Forest Modifier
Wetlands	Central Florida Pine Flatwoods
Wetlands	East Gulf Coastal Plain Jackson Plain Dry Flatwoods - Open Understory Modifier
Wetlands	East Gulf Coastal Plain Jackson Plain Dry Flatwoods - Scrub/Shrub Understory Modifier
Wetlands	East Gulf Coastal Plain Large River Floodplain Forest - Forest Modifier
Wetlands	East Gulf Coastal Plain Near-Coast Pine Flatwoods - Offsite Hardwood Modifier
Wetlands	East Gulf Coastal Plain Near-Coast Pine Flatwoods - Open Understory Modifier
Wetlands	East Gulf Coastal Plain Near-Coast Pine Flatwoods - Scrub/Shrub Understory Modifier
Wetlands	East Gulf Coastal Plain Northern Seepage Swamp
Wetlands	East Gulf Coastal Plain Small Stream and River Floodplain Forest
Wetlands	East Gulf Coastal Plain Southern Loblolly-Hardwood Flatwoods
Wetlands	Lower Mississippi River Bottomland and Floodplain Forest
Wetlands	Lower Mississippi River Bottomland Depressions - Forest Modifier
Wetlands	Mississippi River Low Floodplain (Bottomland) Forest
Wetlands	Mississippi River Riparian Forest
Wetlands	North-Central Appalachian Acidic Swamp
Wetlands	North-Central Interior and Appalachian Rich Swamp
Wetlands	South Florida Bayhead Swamp
Wetlands	South Florida Cypress Dome
Wetlands	South Florida Dwarf Cypress Savanna
Wetlands	South Florida Hardwood Hammock
Wetlands	South Florida Pine Flatwoods
Wetlands	South Florida Willow Head
Wetlands	South-Central Interior Large Floodplain - Forest Modifier
Wetlands	South-Central Interior Small Stream and Riparian
Wetlands	South-Central Interior/Upper Coastal Plain Wet Flatwoods
Wetlands	Southern Coastal Plain Blackwater River Floodplain Forest
Wetlands	Southern Coastal Plain Hydric Hammock
Wetlands	Southern Coastal Plain Nonriverine Basin Swamp
Wetlands	Southern Coastal Plain Nonriverine Cypress Dome
Wetlands	Southern Coastal Plain Seepage Swamp and Baygall
Wetlands	Southern Piedmont Large Floodplain Forest - Forest Modifier
Wetlands	Southern Piedmont Seepage Wetland
Wetlands	Southern Piedmont Small Floodplain and Riparian Forest
Wetlands	Southern Piedmont/Ridge and Valley Upland Depression Swamp

**CITATIONS:** Baber, D. W., and B. E. Coblentz. 1986. Density, home range, habitat use, and reproduction in feral pigs on Santa Catalina Island. *J. Mamm.* 67:512-525.

Baber, D. W., and B. E. Coblentz. 1987. Diet, nutrition, and conception in feral pigs on Santa Catalina Island. *J. Wildl. Manage.* 51:306-317.

Barrett, R. H. 1978. The feral hog on Dye Creek Ranch, California. *Hilgardia* 46:283-355.

Barrett, R. H., and D. S. Pine. 1980. History and status of wild pigs, *SUS SCROFA*, in San Benito County, California. *Calif. Fish & Game* 67:105-117.

Choquenot, D., B. Kay, and B. Lukins. 1990. An evaluation of warfarin for the control of feral pigs. *J. Wildl. Manage.* 54:353-359.

Diong, C. H. 1980. Responses of feral pigs to trap types and food baits. Pages 91-99 in Smith, C. W., ed. *Proc. of Third Conf. in Nat. Sci., Hawaii Volc. Nat. Park. Univ. Hawaii Dept. Botany CPSU/UH, Honolulu.* 396 pp.

Giffin, J. G. 1978. Ecology of the feral pig on the island of Hawaii. *Hawaii Div. Fish & Wildlife, Honolulu, Project W-17-3-11, 1968-1972.* 122 pp.

Godin, A.J. 1977. *Wild Mammals of New England.* Johns Hopkins University Press, Baltimore. 304 pp.

Hanson, R. P., and L. Karstad. 1959. Feral swine in the southeastern United States. *J. Wildl. Manage.* 23:64-74.

- Hone, J., and C. P. Stone. 1989. A comparison and evaluation of feral pig management in two national parks. *Wildl. Soc. Bull.* 17:419-425.
- Ilse, L. M., and E. C. Hellgren. 1995. Resource partitioning in sympatric populations of collared peccaries and feral hogs in southern Texas. *Journal of Mammalogy* 76:784-799.
- Ilse, L. M., and E. C. Hellgren. 1995. Spatial use and group dynamics of sympatric collared peccaries and feral hogs in southern Texas. *Journal of Mammalogy* 76:993-1002.
- Jacobi, J. D. 1976. The influence of feral pigs on native alpine grasslands in Haleakala National Park. Pages 107-112 in Smith, C. W., ed. *Proc. of First Conf. in Nat. Sci., Hawaii Vol. Nat. Park. Univ. Hawaii Dept. Botany, Honolulu.*
- Johnson, T. H. 1988. Biodiversity and conservation in the Caribbean. Profiles of selected islands. ICBP Monograph No. 1.
- Katahira, L. K. 1980. The effects of feral pigs on a montane rain forest in Hawaii Volcanoes National Park. Pages 173-178 in Smith, C. W., ed. *Proc. of Third Conf. in Nat. Sci., Hawaii Vol. Nat. Park. Univ. Hawaii Dept. Botany.*
- Kramer, R. J. 1971. *Hawaiian land mammals.* Charles E. Tuttle Co., Rutland, Vermont, and Tokyo, Japan.
- Lewis, J.C. 1966. Observations of pen-reared European hogs released for stocking. *J. Wildl. Mgmt.* 30(4):832-835.
- Mayer, J. J. 1991. *Wild pigs in the United States, their history, comparative morphology, and current status.* Univ. Georgia Press. 336 pp.
- Singer, F. J., et al. 1981. Home ranges, movements, and habitat use of European wild boar in Tennessee. *J. Wildl. Manage.* 45:343-353.
- Singer, F. J., W. T. Swank, and E. E. C. Clebsch. 1984. Effects of wild pig rooting in a deciduous forest. *J. Wildl. Manage.* 48:464-473.
- Sweeney, J. M., and J. R. Sweeney. 1982. Feral hog *SUS SCROFA*. Pages 1099-1113 in Chapman, J. A., and G. A. Feldhamer, eds. *Wild mammals of North America.* Johns Hopkins Univ. Press, Baltimore.
- Tomich, P. Q. 1986. *Mammals in Hawai'i. A synopsis and notational bibliography.* Second edition. Bishop Museum Press, Honolulu. 375 pp.
- Whitaker, J. O., Jr. 1980. *The Audubon Society field guide to North American mammals.* Alfred A. Knopf, New York. 745 pp.
- Whitaker, J.O. Jr. and W.J. Hamilton, Jr. 1998. *Mammals of the eastern United States.* Cornell Univ. Press, Ithaca, New York. 583 pp.
- Wiewandt, T. A. 1977. Ecology, behavior, and management of the Mona Island ground iguana, *CYCLURA STEJNEGERI*. Ph.D. dissertation, Cornell Univ., Ithaca, New York.
- Wiley, J. W. 1985. Bird conservation in the United States Caribbean. Pages 107-159 in Temple, S. A., editor. *Bird conservation 2.* Univ. Wisconsin Press, Madison. 181 pp.
- Wood, G. W., and R. H. Barret. 1979. Status of wild pigs in the United States. *Wildl. Soc. Bull.* 7:237-246.
- Woodward, S. L., and D. P. Sponenberg. 1992. Feral livestock in America: identification of populations important for the conservation of genetic diversity. Abstract, 6th Annual Meeting of the Society for Conservation Biology, p. 148.

---

For more information:: SE-GAP Analysis Project / BaSIC  
127 David Clark Labs  
Dept. of Biology, NCSU  
Raleigh, NC 27695-7617  
(919) 513-2853  
[www.basic.ncsu.edu/segap](http://www.basic.ncsu.edu/segap)

Compiled: 15 September 2011

This data was compiled and/or developed by the Southeast GAP Analysis Project at The Biodiversity and Spatial Information Center, North Carolina State University.