



SOUTHEAST GAP ANALYSIS PROJECT



Species Modeling Report

Florida Mouse

Podomys floridanus

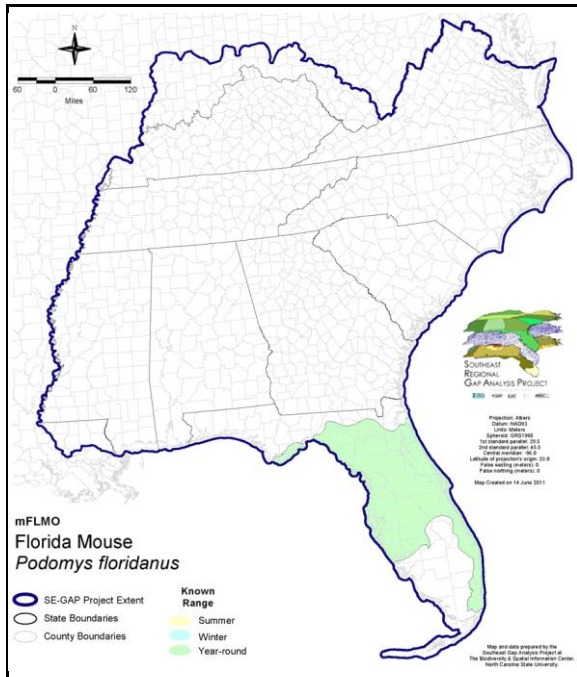
Taxa: Mammalian
 Order: Rodentia
 Family: Cricetidae

SE-GAP Spp Code: **mFLMO**

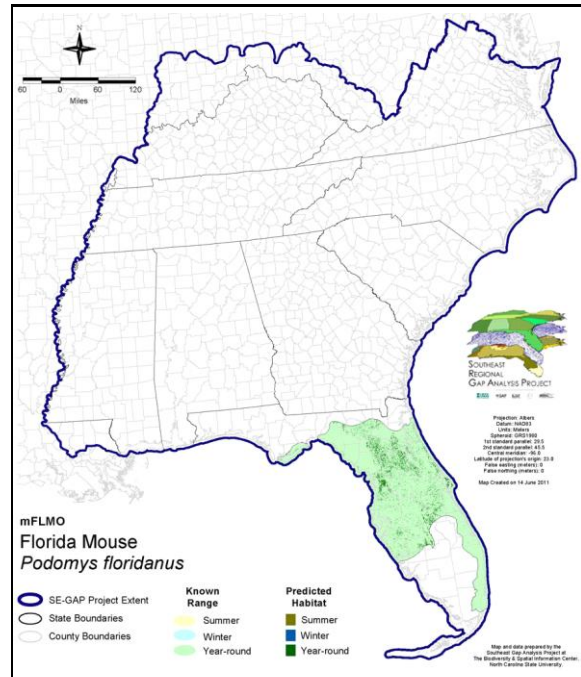
ITIS Species Code: 180339

NatureServe Element Code: AMAFF20010

KNOWN RANGE:



PREDICTED HABITAT:



Range Map Link: http://www.basic.ncsu.edu/segap/datazip/maps/SE_Range_mFLMO.pdf

Predicted Habitat Map Link: http://www.basic.ncsu.edu/segap/datazip/maps/SE_Dist_mFLMO.pdf

GAP Online Tool Link: <http://www.gapservice.ncsu.edu/segap/segap/index2.php?species=mFLMO>

Data Download: http://www.basic.ncsu.edu/segap/datazip/region/vert/mFLMO_se00.zip

PROTECTION STATUS:

Reported on March 14, 2011

Federal Status: ---
 State Status: FL (SSC)
 NS Global Rank: G3
 NS State Rank: FL (S3)

SUMMARY OF PREDICTED HABITAT BY MANAGMENT AND GAP PROTECTION STATUS:

| | US FWS | | US Forest Service | | Tenn. Valley Author. | | US DOD/ACOE | |
|----------|------------------------|-----|-----------------------|-----|----------------------|-----|-----------------------|-----|
| | ha | % | ha | % | ha | % | ha | % |
| Status 1 | 1,697.8 | < 1 | 0.0 | 0 | 0.0 | 0 | 0.0 | 0 |
| Status 2 | 271.7 | < 1 | 3,435.4 | < 1 | 0.0 | 0 | 0.0 | 0 |
| Status 3 | 0.0 | 0 | 42,548.3 | 7 | 0.0 | 0 | 12,713.4 | 2 |
| Status 4 | 0.0 | 0 | 0.0 | 0 | 0.0 | 0 | 0.0 | 0 |
| Total | 1,969.5 | < 1 | 45,983.7 | 8 | 0.0 | 0 | 12,713.4 | 2 |
| | US Dept. of Energy | | US Nat. Park Service | | NOAA | | Other Federal Lands | |
| | ha | % | ha | % | ha | % | ha | % |
| Status 1 | 0.0 | 0 | 0.3 | < 1 | 0.0 | 0 | 9,390.5 | 2 |
| Status 2 | 0.0 | 0 | 2,841.4 | < 1 | 536.9 | < 1 | 0.2 | < 1 |
| Status 3 | 0.0 | 0 | 0.0 | 0 | 0.0 | 0 | 0.0 | 0 |
| Status 4 | 0.0 | 0 | 0.0 | 0 | 0.0 | 0 | 0.0 | 0 |
| Total | 0.0 | 0 | 2,841.7 | < 1 | 536.9 | < 1 | 9,390.7 | 2 |
| | Native Am. Reserv. | | State Park/Hist. Park | | State WMA/Gameland | | State Forest | |
| | ha | % | ha | % | ha | % | ha | % |
| Status 1 | 0.0 | 0 | 0.0 | 0 | 0.0 | 0 | 0.0 | 0 |
| Status 2 | 0.0 | 0 | 61.2 | < 1 | 16,870.8 | 3 | 0.0 | 0 |
| Status 3 | 0.0 | 0 | 35,048.1 | 6 | 33.7 | < 1 | 28,887.8 | 5 |
| Status 4 | 0.0 | 0 | 0.0 | 0 | 0.0 | 0 | 0.0 | 0 |
| Total | 0.0 | 0 | 35,109.3 | 6 | 16,904.4 | 3 | 28,887.8 | 5 |
| | State Coastal Reserve | | ST Nat.Area/Preserve | | Other State Lands | | Private Cons. Easemt. | |
| | ha | % | ha | % | ha | % | ha | % |
| Status 1 | 0.0 | 0 | 0.0 | 0 | 0.0 | 0 | 0.0 | 0 |
| Status 2 | 95.0 | < 1 | 284.9 | < 1 | 0.0 | 0 | 360.2 | < 1 |
| Status 3 | 0.0 | 0 | 2,194.6 | < 1 | 2,170.3 | < 1 | 6,125.9 | 1 |
| Status 4 | 0.0 | 0 | 0.0 | 0 | 58.6 | < 1 | 0.0 | 0 |
| Total | 95.0 | < 1 | 2,479.5 | < 1 | 2,228.9 | < 1 | 6,486.0 | 1 |
| | Private Land - No Res. | | Water | | Overall Total | | | |
| | ha | % | ha | % | ha | % | ha | % |
| Status 1 | 0.0 | 0 | 0.0 | 0 | 11,088.5 2 | | | |
| Status 2 | 0.0 | 0 | 0.0 | 0 | 24,757.7 4 | | | |
| Status 3 | 0.0 | 0 | 0.0 | 0 | 129,721.9 29 | | | |
| Status 4 | 389,168.2 | 65 | 406.6 | < 1 | 389,633.4 65 | | | |
| Total | 389,168.2 | 65 | 406.6 | < 1 | 555,201.5 100 | | | |

GAP Status 1: An area having permanent protection from conversion of natural land cover and a mandated management plan in operation to maintain a natural state within which disturbance events (of natural type, frequency, and intensity) are allowed to proceed without interference or are mimicked through management.

GAP Status 2: An area having permanent protection from conversion of natural land cover and a mandated management plan in operation to maintain a primarily natural state, but which may receive use or management practices that degrade the quality of existing natural communities.

GAP Status 3: An area having permanent protection from conversion of natural land cover for the majority of the area, but subject to extractive uses of either a broad, low-intensity type or localized intense type. It also confers protection to federally listed endangered and threatened species throughout the area.

GAP Status 4: Lack of irrevocable easement or mandate to prevent conversion of natural habitat types to anthropogenic habitat types. Allows for intensive use throughout the tract. Also includes those tracts for which the existence of such restrictions or sufficient information to establish a higher status is unknown.

PREDICTED HABITAT MODEL(S):

Year-round Model:

Habitat Description: The Florida mouse is associated with the sandhills system in Florida. They inhabit areas of natural sandhill scrub types as well as anthropogenically altered sandhill types. Sandhill types inhabited by the Florida mouse include: sand pine scrub, coastal scrub, scrubby flatwoods, longleaf pine / turkey oak, slash pine/turkey oak, upland hammock, xeric live oak hammock, and "drier pine flatwoods". Highest densities were found in early succession of scrub and sandhill. They live in burrows, frequently those of *Gopherus polyphemus*. Mean movements less than 50 m (Layne 1992). The distribution includes Merritt Island. They are the characteristic mouse of xeric Florida habitats.

Based on Florida state habitat notes - K. Cook - 6-8-05

Additional information:

Jones (1990) reports home range size as 0.33 ha. And dispersal distance as 11 meters. K. Cook - 6-8-05

Selected Map Units:

| Functional Group | Map Unit Name |
|-----------------------------------|---|
| Coastal Dune & Freshwater Wetland | Atlantic Coastal Plain Southern Dune and Maritime Grassland |
| Coastal Dune & Freshwater Wetland | East Gulf Coastal Plain Dune and Coastal Grassland |
| Coastal Dune & Freshwater Wetland | Southwest Florida Dune and Coastal Grassland |
| Forest/Woodland | Atlantic Coastal Plain Southern Maritime Forest |
| Forest/Woodland | East Gulf Coastal Plain Interior Upland Longleaf Pine Woodland - Open Understory Modifier |
| Forest/Woodland | East Gulf Coastal Plain Interior Upland Longleaf Pine Woodland - Scrub/Shrub Modifier |
| Forest/Woodland | East Gulf Coastal Plain Maritime Forest |
| Forest/Woodland | Florida Longleaf Pine Sandhill - Open Understory Modifier |
| Forest/Woodland | Florida Longleaf Pine Sandhill - Scrub/Shrub Understory Modifier |
| Forest/Woodland | Florida Peninsula Inland Scrub |
| Forest/Woodland | South Florida Pine Rockland |
| Forest/Woodland | Southeast Florida Coastal Strand and Maritime Hammock |
| Forest/Woodland | Southern Coastal Plain Oak Dome and Hammock |
| Forest/Woodland | Southwest Florida Coastal Strand and Maritime Hammock |
| Prairie | Florida Dry Prairie |

CITATIONS: Jones, C. A., and F. Richard. 1990. Use of gopher tortoise burrows by Florida mice (*Podomys floridanus*) in Putnam County, Florida. *Florida Field Naturalist* 18:45-51.

Layne, J. N. 1992. Florida mouse. *Rare and Endangered Biota of Florida: Mammals*. S. R. Humphrey ed. Gainesville, Florida: University of Florida; 1 pp. 250-264.

For more information:: SE-GAP Analysis Project / BaSIC
127 David Clark Labs
Dept. of Biology, NCSU
Raleigh, NC 27695-7617
(919) 513-2853
www.basic.ncsu.edu/segap

Compiled: 15 September 2011

This data was compiled and/or developed by the Southeast GAP Analysis Project at The Biodiversity and Spatial Information Center, North Carolina State University.