



SOUTHEAST GAP ANALYSIS PROJECT



Species Modeling Report

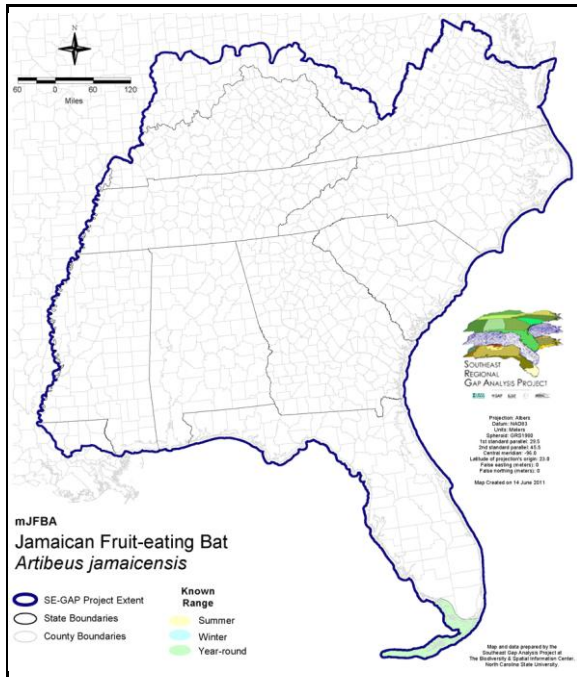
Jamaican Fruit-eating Bat

Artibeus jamaicensis

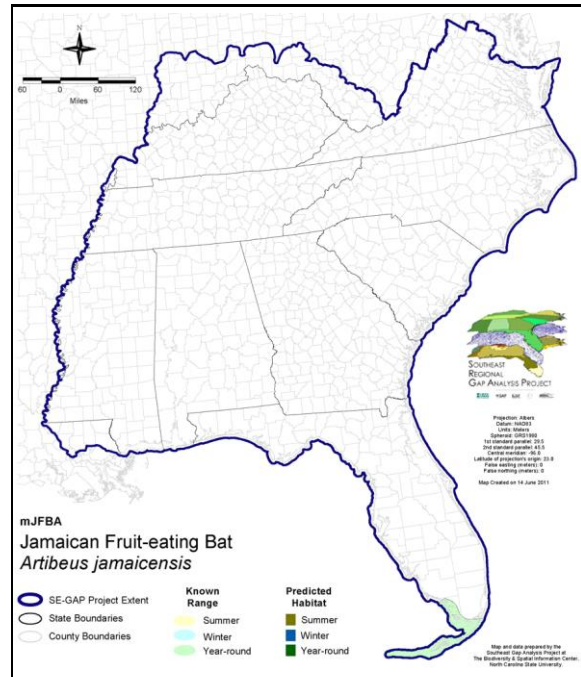
Taxa: Mammalian
 Order: Chiroptera
 Family: Phyllostomidae

SE-GAP Spp Code: **mJFBA**
 ITIS Species Code: 180058
 NatureServe Element Code: AMACB07010

KNOWN RANGE:



PREDICTED HABITAT:



Range Map Link: http://www.basic.ncsu.edu/segap/datazip/maps/SE_Range_mJFBA.pdf

Predicted Habitat Map Link: http://www.basic.ncsu.edu/segap/datazip/maps/SE_Dist_mJFBA.pdf

GAP Online Tool Link: <http://www.gapservice.ncsu.edu/segap/segap/index2.php?species=mJFBA>

Data Download: http://www.basic.ncsu.edu/segap/datazip/region/vert/mJFBA_se00.zip

PROTECTION STATUS:

Reported on March 14, 2011

Federal Status: ---
 State Status: ---
 NS Global Rank: G5
 NS State Rank: FL (SNA)

SUMMARY OF PREDICTED HABITAT BY MANAGMENT AND GAP PROTECTION STATUS:

	US FWS		US Forest Service		Tenn. Valley Author.		US DOD/ACOE	
	ha	%	ha	%	ha	%	ha	%
Status 1	117.6	1	0.0	0	0.0	0	0.0	0
Status 2	0.0	0	0.0	0	0.0	0	0.0	0
Status 3	0.0	0	0.0	0	0.0	0	179.4	2
Status 4	0.0	0	0.0	0	0.0	0	0.0	0
Total	117.6	1	0.0	0	0.0	0	179.4	2
	US Dept. of Energy		US Nat. Park Service		NOAA		Other Federal Lands	
	ha	%	ha	%	ha	%	ha	%
Status 1	0.0	0	2,899.0	31	0.0	0	0.0	0
Status 2	0.0	0	0.0	0	0.0	0	0.0	0
Status 3	0.0	0	446.0	5	0.0	0	0.0	0
Status 4	0.0	0	0.0	0	0.0	0	0.0	0
Total	0.0	0	3,344.9	36	0.0	0	0.0	0
	Native Am. Reserv.		State Park/Hist. Park		State WMA/Gameland		State Forest	
	ha	%	ha	%	ha	%	ha	%
Status 1	0.0	0	0.0	0	0.0	0	0.0	0
Status 2	0.0	0	0.0	0	30.4	< 1	0.0	0
Status 3	0.0	0	363.2	4	0.0	0	0.0	0
Status 4	0.0	0	0.0	0	0.0	0	0.0	0
Total	0.0	0	363.2	4	30.4	< 1	0.0	0
	State Coastal Reserve		ST Nat.Area/Preserve		Other State Lands		Private Cons. Easemt.	
	ha	%	ha	%	ha	%	ha	%
Status 1	0.0	0	0.0	0	0.0	0	0.0	0
Status 2	0.0	0	0.0	0	0.0	0	0.0	0
Status 3	0.0	0	0.0	0	0.0	0	0.0	0
Status 4	0.0	0	0.0	0	0.0	0	0.0	0
Total	0.0	0	0.0	0	0.0	0	0.0	0
	Private Land - No Res.		Water		Overall Total			
	ha	%	ha	%	ha	%	ha	%
Status 1	0.0	0	0.0	0	3,016.6 33			
Status 2	0.0	0	0.0	0	30.4 < 1			
Status 3	0.0	0	0.0	0	988.5 11			
Status 4	3,786.9	41	1,393.8	15	5,180.8 56			
Total	3,786.9	41	1,393.8	15	9,216.3 100			

GAP Status 1: An area having permanent protection from conversion of natural land cover and a mandated management plan in operation to maintain a natural state within which disturbance events (of natural type, frequency, and intensity) are allowed to proceed without interference or are mimicked through management.

GAP Status 2: An area having permanent protection from conversion of natural land cover and a mandated management plan in operation to maintain a primarily natural state, but which may receive use or management practices that degrade the quality of existing natural communities.

GAP Status 3: An area having permanent protection from conversion of natural land cover for the majority of the area, but subject to extractive uses of either a broad, low-intensity type or localized intense type. It also confers protection to federally listed endangered and threatened species throughout the area.

GAP Status 4: Lack of irrevocable easement or mandate to prevent conversion of natural habitat types to anthropogenic habitat types. Allows for intensive use throughout the tract. Also includes those tracts for which the existence of such restrictions or sufficient information to establish a higher status is unknown.

PREDICTED HABITAT MODEL(S):

Year-round Model:

Habitat Description: Jamaican fruit-eating bat are found in the Florida Keys. They occupy humid tropical habitats, such as tropical evergreen forests and utilize caves, hollow trees, dense foliage, and buildings as roost sites (Ortega & Castro-Arellano 2001). Jamaican fruit-eating bats feed primarily on fig trees (*Ficus* spp.), but are also known to eat mangos, avacados, and bananas (Whitaker & Hamilton 1998). Amy Silvano 10jun05

Ecosystem Classifiers: Hydric Hammocks, and Pine Rocklands b/c of underlying limestone. Amy Silvano 10jun05

?????added Row/Crop and Dec Plantations to get at fruit tree farms but this may be to liberal. Also used urban for building roost but only adjacent to primary hab. Amy Silvano 10jun05

ALTERNATIVE HAND MODEL: FL Land Cover 2003 has an "Other Agriculture Class" that include ag lands of orchards, avocado groves, specialy farms ets. Could use this class as a mask to select out pixels within our row/crop & plantation class for this species to better get at appropriate fruit farms ets. Amy Silvano 10jun05

Selected Map Units:

Functional Group	Map Unit Name
Anthropogenic	Deciduous Plantations
Anthropogenic	Row Crop
Forest/Woodland	South Florida Pine Rockland
Wetlands	South Florida Hardwood Hammock
Wetlands	Southern Coastal Plain Hydric Hammock

Selected Secondary Map Units within 120m of Primary Map Units:

Functional Group	Map Unit Name
Anthropogenic	Low Intensity Developed

CITATIONS: Ortega, J. and I. Castro-Arellano. 2001. *Artibeus jamaicensis*. Mammalian Species No. 662 Pp 1-9

Whitaker, J.O. Jr. and W.J. Hamilton, Jr. 1998. Mammals of the eastern United States. Cornell Univ. Press, Ithaca, New York. 583 pp.

For more information:: SE-GAP Analysis Project / BaSIC
127 David Clark Labs
Dept. of Biology, NCSU
Raleigh, NC 27695-7617
(919) 513-2853
www.basic.ncsu.edu/segap

Compiled: 15 September 2011

This data was compiled and/or developed by the Southeast GAP Analysis Project at The Biodiversity and Spatial Information Center, North Carolina State University.