



SOUTHEAST GAP ANALYSIS PROJECT



Species Modeling Report

Mexican Gray Squirrel

Sciurus aureogaster

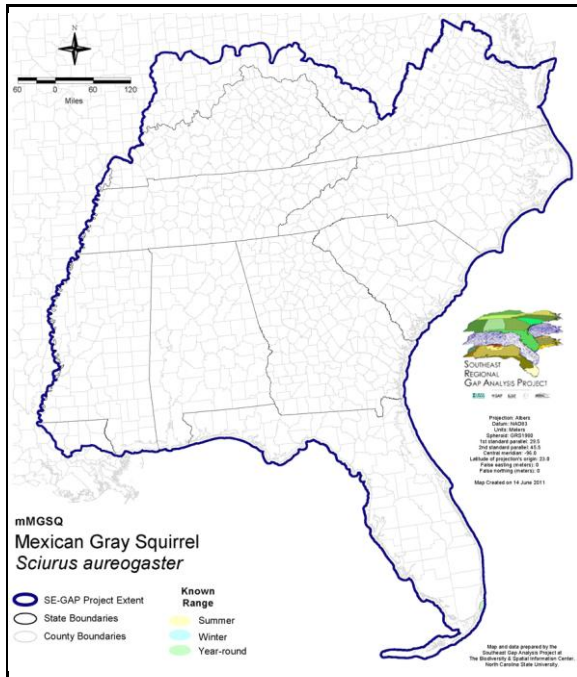
Taxa: Mammalian
 Order: Rodentia
 Family: Sciuridae

SE-GAP Spp Code: **mMGSQ**

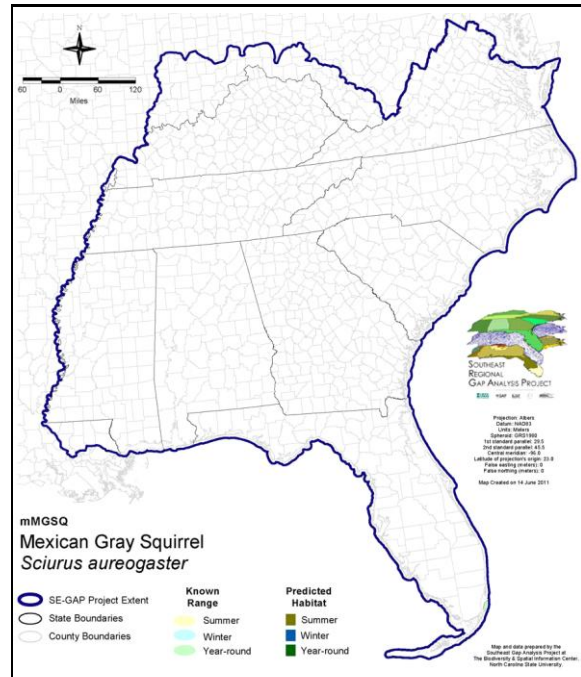
ITIS Species Code: 552498

NatureServe Element Code: AMAFB07070

KNOWN RANGE:



PREDICTED HABITAT:



Range Map Link: http://www.basic.ncsu.edu/segap/datazip/maps/SE_Range_mMGSQ.pdf

Predicted Habitat Map Link: http://www.basic.ncsu.edu/segap/datazip/maps/SE_Dist_mMGSQ.pdf

GAP Online Tool Link: <http://www.gapservice.ncsu.edu/segap/segap/index2.php?species=mMGSQ>

Data Download: http://www.basic.ncsu.edu/segap/datazip/region/vert/mMGSQ_se00.zip

PROTECTION STATUS:

Reported on March 14, 2011

Federal Status: ---
 State Status: ---
 NS Global Rank: G5
 NS State Rank: FL (SNA)

SUMMARY OF PREDICTED HABITAT BY MANAGMENT AND GAP PROTECTION STATUS:

	US FWS		US Forest Service		Tenn. Valley Author.		US DOD/ACOE	
	ha	%	ha	%	ha	%	ha	%
Status 1	0.0	0	0.0	0	0.0	0	0.0	0
Status 2	0.0	0	0.0	0	0.0	0	0.0	0
Status 3	0.0	0	0.0	0	0.0	0	0.0	0
Status 4	0.0	0	0.0	0	0.0	0	0.0	0
Total	0.0	0	0.0	0	0.0	0	0.0	0
	US Dept. of Energy		US Nat. Park Service		NOAA		Other Federal Lands	
	ha	%	ha	%	ha	%	ha	%
Status 1	0.0	0	81.2	97	0.0	0	0.0	0
Status 2	0.0	0	0.0	0	0.0	0	0.0	0
Status 3	0.0	0	0.0	0	0.0	0	0.0	0
Status 4	0.0	0	0.0	0	0.0	0	0.0	0
Total	0.0	0	81.2	97	0.0	0	0.0	0
	Native Am. Reserv.		State Park/Hist. Park		State WMA/Gameland		State Forest	
	ha	%	ha	%	ha	%	ha	%
Status 1	0.0	0	0.0	0	0.0	0	0.0	0
Status 2	0.0	0	0.0	0	0.0	0	0.0	0
Status 3	0.0	0	0.0	0	0.0	0	0.0	0
Status 4	0.0	0	0.0	0	0.0	0	0.0	0
Total	0.0	0	0.0	0	0.0	0	0.0	0
	State Coastal Reserve		ST Nat.Area/Preserve		Other State Lands		Private Cons. Easemt.	
	ha	%	ha	%	ha	%	ha	%
Status 1	0.0	0	0.0	0	0.0	0	0.0	0
Status 2	0.0	0	0.0	0	0.0	0	0.0	0
Status 3	0.0	0	0.0	0	0.0	0	0.0	0
Status 4	0.0	0	0.0	0	0.0	0	0.0	0
Total	0.0	0	0.0	0	0.0	0	0.0	0
	Private Land - No Res.		Water		Overall Total			
	ha	%	ha	%	ha	%	ha	%
Status 1	0.0	0	0.0	0	81.2	97		
Status 2	0.0	0	0.0	0	0.0	0		
Status 3	0.0	0	0.0	0	0.0	0		
Status 4	0.0	0	2.3	3	2.3	3		
Total	0.0	0	2.3	3	83.5	100		

GAP Status 1: An area having permanent protection from conversion of natural land cover and a mandated management plan in operation to maintain a natural state within which disturbance events (of natural type, frequency, and intensity) are allowed to proceed without interference or are mimicked through management.

GAP Status 2: An area having permanent protection from conversion of natural land cover and a mandated management plan in operation to maintain a primarily natural state, but which may receive use or management practices that degrade the quality of existing natural communities.

GAP Status 3: An area having permanent protection from conversion of natural land cover for the majority of the area, but subject to extractive uses of either a broad, low-intensity type or localized intense type. It also confers protection to federally listed endangered and threatened species throughout the area.

GAP Status 4: Lack of irrevocable easement or mandate to prevent conversion of natural habitat types to anthropogenic habitat types. Allows for intensive use throughout the tract. Also includes those tracts for which the existence of such restrictions or sufficient information to establish a higher status is unknown.

PREDICTED HABITAT MODEL(S):

Year-round Model:

Habitat Description: The Mexican Gray Squirrel was established on Elliot Key and Dade County from four individuals in 1938. Tropical broadleaf evergreen forest is the preferred habitat. Their diet includes fruits such as mangos, green figs, jubo plums, tamarind pods, chico zapote, maïse, papaya, mastic, mahogany seeds, and coconut. They also browse on the buds and twigs of trees such as mahogany, gumbo limbo, Florida thatch palm, and sea grape. The mean home range for males was 2.3 ha, including a range of 0.9 to 4.7 ha. The average home range for adult females was only 0.9 ha with a range of 0.5 to 1.2 ha. Numerous leaf nests of squirrels were observed in a variety of trees including Florida poisonwood (*Metopium toxiferum*), West Indies mahogany (*Swietenia mahogoni*), and Bahama lysiloma (*Lysiloma bahamensis*). Where hollow trees were abundant, the squirrels utilized these preferentially for homesites and leaf nests were not as evident (Brown & McGuire 1969). Stacy Smith, 17June05

Selected Map Units:

Functional Group	Map Unit Name
Anthropogenic	Developed Open Space
Anthropogenic	Low Intensity Developed
Anthropogenic	Medium Intensity Developed
Forest/Woodland	Southeast Florida Coastal Strand and Maritime Hammock
Wetlands	South Florida Hardwood Hammock

CITATIONS: Brown, Larry N. and Richard M. McGuire. 1969. Status of the red-bellied squirrel (*Sciurus aureogaster*) in the Florida Keys. *American Midland Naturalist*. 82(2):629-630.

For more information:: SE-GAP Analysis Project / BaSIC
127 David Clark Labs
Dept. of Biology, NCSU
Raleigh, NC 27695-7617
(919) 513-2853
www.basic.ncsu.edu/segap

Compiled: 15 September 2011

This data was compiled and/or developed by the Southeast GAP Analysis Project at The Biodiversity and Spatial Information Center, North Carolina State University.