



SOUTHEAST GAP ANALYSIS PROJECT



Species Modeling Report

Meadow Jumping Mouse

Zapus hudsonius

Taxa: Mammalian

Order: Rodentia

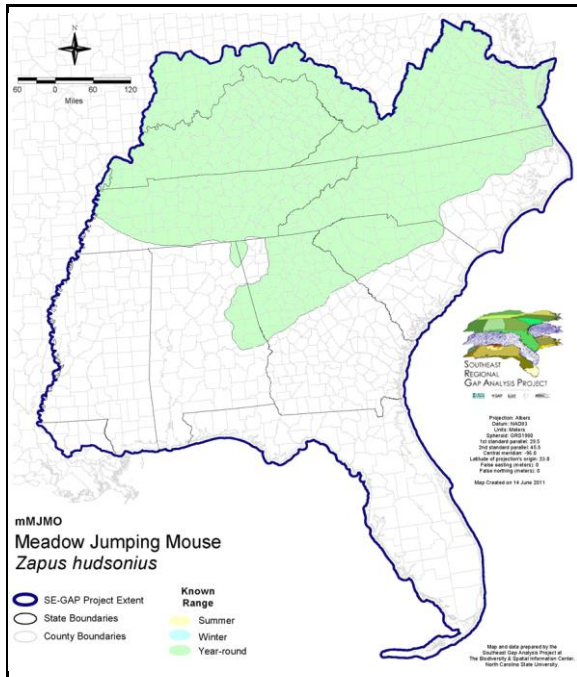
Family: Dipodidae

SE-GAP Spp Code: **mMJMO**

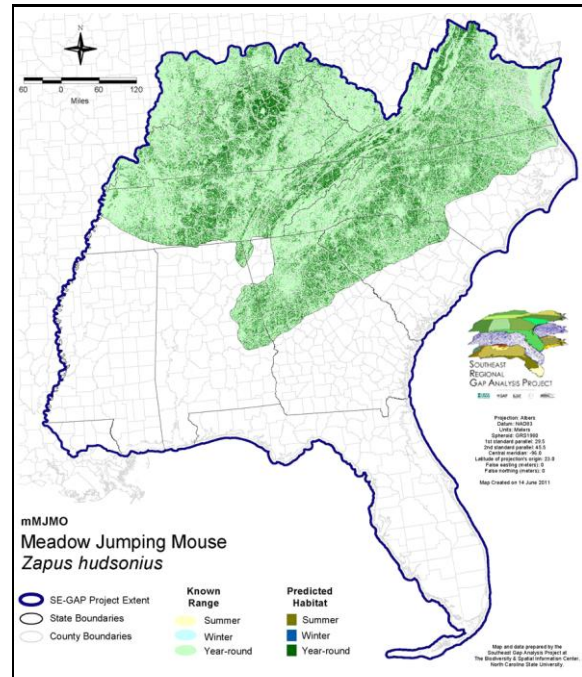
ITIS Species Code: 180386

NatureServe Element Code: AMAFH01010

KNOWN RANGE:



PREDICTED HABITAT:



Range Map Link: http://www.basic.ncsu.edu/segap/datazip/maps/SE_Range_mMJMO.pdf

Predicted Habitat Map Link: http://www.basic.ncsu.edu/segap/datazip/maps/SE_Dist_mMJMO.pdf

GAP Online Tool Link: <http://www.gapservice.ncsu.edu/segap/segap/index2.php?species=mMJMO>

Data Download: http://www.basic.ncsu.edu/segap/datazip/region/vert/mMJMO_se00.zip

PROTECTION STATUS:

Reported on March 14, 2011

Federal Status: ---

State Status: AL (SP), AZ (WSC), KY (N), MS (Non-game species in need of management), NC (W2), NJ (U), NM (E), NY (U), OK (Category II), RI (Not Listed), TN (D), BC (4 (2005)), QC (Non suivie)

NS Global Rank: G5

NS State Rank: AK (S5), AL (S3), AZ (S2), CO (S2), CT (S5), DC (S3), DE (S5), GA (S3), IA (S4), IL (S5), IN (S4), KS (S3), KY (S4), MA (S5), MD (S5), ME (S5), MI (S5), MN (SNR), MO (S4), MS (S1), MT (S2), NC (S3), ND (SNR), NE (S5), NH (S5), NJ (S4), NM (S2), NY (S5), OH (SNR), OK (S1), PA (S5), RI (S5), SC (SNR), SD (S5), TN (S4), VA (S5), VT (S5), WI (S4), WV (S3), WY (S3), AB (S4), BC (S5), LB (S5), MB (S5), NB (S5), NS (S5), NT (SNR), NU (SNR), ON (S5), PE (S5), QC (S5), SK (S5), YT (S5)

SUMMARY OF PREDICTED HABITAT BY MANAGMENT AND GAP PROTECTION STATUS:

	US FWS		US Forest Service		Tenn. Valley Author.		US DOD/ACOE	
	ha	%	ha	%	ha	%	ha	%
Status 1	17,706.8	< 1	864.5	< 1	0.0	0	0.0	0
Status 2	7,793.9	< 1	9,217.2	< 1	0.0	0	1,504.4	< 1
Status 3	81.7	< 1	71,773.8	< 1	17,659.2	< 1	36,029.4	< 1
Status 4	12.3	< 1	0.0	0	0.0	0	16.5	< 1
Total	25,594.7	< 1	81,855.5	< 1	17,659.2	< 1	37,550.3	< 1
	US Dept. of Energy		US Nat. Park Service		NOAA		Other Federal Lands	
	ha	%	ha	%	ha	%	ha	%
Status 1	0.0	0	6,931.8	< 1	0.0	0	0.0	0
Status 2	0.0	0	201.2	< 1	7.2	< 1	0.0	0
Status 3	2,375.2	< 1	12,294.5	< 1	0.0	0	1,089.9	< 1
Status 4	0.0	0	0.0	0	0.0	0	0.0	0
Total	2,375.2	< 1	19,427.4	< 1	7.2	< 1	1,089.9	< 1
	Native Am. Reserv.		State Park/Hist. Park		State WMA/Gameland		State Forest	
	ha	%	ha	%	ha	%	ha	%
Status 1	0.0	0	4.1	< 1	0.0	0	0.0	0
Status 2	0.0	0	545.3	< 1	33,232.2	< 1	49.9	< 1
Status 3	1,189.7	< 1	11,110.5	< 1	22,438.9	< 1	6,964.5	< 1
Status 4	0.0	0	0.0	0	4,725.0	< 1	0.0	0
Total	1,189.7	< 1	11,660.0	< 1	60,396.1	< 1	7,014.3	< 1
	State Coastal Reserve		ST Nat.Area/Preserve		Other State Lands		Private Cons. Easemt.	
	ha	%	ha	%	ha	%	ha	%
Status 1	0.0	0	109.1	< 1	0.0	0	0.0	0
Status 2	2.4	< 1	5,703.4	< 1	4.3	< 1	0.0	0
Status 3	0.0	0	195.9	< 1	1,017.6	< 1	2,014.8	< 1
Status 4	0.0	0	0.0	0	1,015.6	< 1	0.0	0
Total	2.4	< 1	6,008.4	< 1	2,037.5	< 1	2,014.8	< 1
	Private Land - No Res.		Water		Overall Total			
	ha	%	ha	%	ha	%		
Status 1	0.0	0	0.0	0	25,616.3	< 1		
Status 2	0.0	0	0.0	0	58,261.3	< 1		
Status 3	0.0	0	0.0	0	186,235.7	2		
Status 4	12,557,652.6	97	6,786.6	< 1	12,574,921.2	97		
Total	12,557,652.6	97	6,786.6	< 1	12,845,034.5	100		

GAP Status 1: An area having permanent protection from conversion of natural land cover and a mandated management plan in operation to maintain a natural state within which disturbance events (of natural type, frequency, and intensity) are allowed to proceed without interference or are mimicked through management.

GAP Status 2: An area having permanent protection from conversion of natural land cover and a mandated management plan in operation to maintain a primarily natural state, but which may receive use or management practices that degrade the quality of existing natural communities.

GAP Status 3: An area having permanent protection from conversion of natural land cover for the majority of the area, but subject to extractive uses of either a broad, low-intensity type or localized intense type. It also confers protection to federally listed endangered and threatened species throughout the area.

GAP Status 4: Lack of irrevocable easement or mandate to prevent conversion of natural habitat types to anthropogenic habitat types. Allows for intensive use throughout the tract. Also includes those tracts for which the existence of such restrictions or sufficient information to establish a higher status is unknown.

PREDICTED HABITAT MODEL(S):

Year-round Model:

Habitat Description: Meadow jumping mice are found in grassy or weedy fields and are especially abundant in stands of Impatiens (Wilson and Ruff 1999) or fields with mixed grasses and forbs, whether along ponds or streams or well removed from watercourses. Small numbers occupy grassy clearings in forested regions, and they often occur in early successional-stage brushland. They can become abundant in wooded areas, especially in thick, herbaeous vegetation.

Meadow jumping mice inhabit wet meadows or fields in the Blue Ridge and Piedmont provinces. Although perhaps most often seen in meadows, jumping mice may also be encountered in vegetation along creeks, at the edges of woods, and occasionally in woodlands having a lush carpet of grasses, sedges and herbs. Moist sites in bogs and fens and along streams as well as dry upland sites are all suitable as habitat provided dense herbaceous vegetation is present. However, in North Carolina, wetter sites are preferred (Lee et al. 1982). Shelter and nesting activity is underground in burrows usually dug in dry fields or in a bank or hillside near wet herbaceous sites (Linzey and Linzey 1971).

- K. Cook - 6-10-05

Selected Map Units:

Functional Group	Map Unit Name
Anthropogenic	Pasture/Hay
Anthropogenic	Successional Grassland/Herbaceous
Anthropogenic	Successional Grassland/Herbaceous (Other)
Anthropogenic	Successional Grassland/Herbaceous (Utility Swath)
Anthropogenic	Successional Shrub/Scrub (Clear Cut)
Anthropogenic	Successional Shrub/Scrub (Other)
Anthropogenic	Successional Shrub/Scrub (Utility Swath)
Bald	Central Appalachian Montane Rocky Bald - Herbaceous Modifier
Bald	Central Appalachian Montane Rocky Bald - Shrub Modifier
Bald	Southern Appalachian Grass and Shrub Bald - Herbaceous Modifier
Bald	Southern Appalachian Grass and Shrub Bald - Shrub Modifier
Forest/Woodland	Atlantic Coastal Plain Fall-line Sandhills Longleaf Pine Woodland - Open Understory Modifier
Forest/Woodland	Atlantic Coastal Plain Upland Longleaf Pine Woodland
Forest/Woodland	East Gulf Coastal Plain Interior Upland Longleaf Pine Woodland - Open Understory Modifier
Forest/Woodland	Southeastern Interior Longleaf Pine Woodland
Freshwater Tidal Marsh & Wetland	Atlantic Coastal Plain Central Fresh-Oligohaline Tidal Marsh
Freshwater Tidal Marsh & Wetland	Atlantic Coastal Plain Embayed Region Tidal Freshwater Marsh
Freshwater Tidal Marsh & Wetland	Atlantic Coastal Plain Northern Fresh and Oligohaline Tidal Marsh
Prairie	Bluegrass Basin Savanna and Woodland
Prairie	Pennyroyal Karst Plain Prairie and Barrens
Prairie	Southern Ridge and Valley Patch Prairie
Prairie	Western Highland Rim Prairie and Barrens
Wetlands	Atlantic Coastal Plain Blackwater Stream Floodplain Forest - Herbaceous Modifier
Wetlands	Atlantic Coastal Plain Clay-Based Carolina Bay Herbaceous Wetland
Wetlands	Atlantic Coastal Plain Depression Pondshore
Wetlands	Atlantic Coastal Plain Large Natural Lakeshore
Wetlands	Atlantic Coastal Plain Northern Pondshore
Wetlands	Atlantic Coastal Plain Northern Wet Longleaf Pine Savanna and Flatwoods
Wetlands	Atlantic Coastal Plain Peatland Pocosin
Wetlands	Atlantic Coastal Plain Sandhill Seep
Wetlands	Central Appalachian Floodplain - Herbaceous Modifier
Wetlands	Central Appalachian Riparian - Herbaceous Modifier
Wetlands	North-Central Appalachian Seepage Fen
Wetlands	South-Central Interior Large Floodplain - Herbaceous Modifier
Wetlands	South-Central Interior Small Stream and Riparian
Wetlands	Southern and Central Appalachian Bog and Fen

Wetlands	Southern Piedmont Large Floodplain Forest - Forest Modifier
Wetlands	Southern Piedmont Large Floodplain Forest - Herbaceous Modifier
Wetlands	Southern Piedmont Seepage Wetland
Wetlands	Southern Piedmont Small Floodplain and Riparian Forest
Wetlands	Western Highland Rim Seepage Fen

- CITATIONS:** Baker, Rollin H. 1983. Michigan mammals. Michigan State University Press. 642 pp.
- Banfield, A.W.F. 1974. The mammals of Canada. University of Toronto Press, Toronto.
- Choate, J. R., J. K. Jones, Jr., and C. Jones. 1994. Handbook of mammals of the south-central states. Louisiana State University Press, Baton Rouge. 304 pp.
- Frey, J. K. 1992. Response of a mammalian faunal element to climatic changes. *J. Mamm.* 73:43-50.
- Godin, A.J. 1977. Wild Mammals of New England. Johns Hopkins University Press, Baltimore. 304 pp.
- Hafner, D. J., K. E. Petersen, and T. L. Yates. 1981. Evolutionary relationships of jumping mice (genus ZAPUS) of the southwestern United States. *J. Mamm.* 62:501-512.
- Hall, E. R. 1981. The Mammals of North America. Second edition. 2 Volumes. John Wiley and Sons, New York, New York. 1181 p.
- Hamilton, William J., Jr., and John O. Whitaker, Jr. 1979. Mammals of the eastern United States. Cornell Univ. Press, Ithaca, New York. 346 pp.
- Hoffmeister, D. F. 1986. Mammals of Arizona. Univ. Arizona Press and Arizona Game and Fish Dept. 602 pp.
- Hoyle, J. A., and R. Boonstra. 1986. Life history traits of the meadow jumping mouse, ZAPUS HUDSONIUS, in southern Ontario. *Can. Field-Nat.* 100:537-544.
- Jones, J. K., Jr., et al. 1992. Revised checklist of North American mammals north of Mexico, 1991. *Occas. Pap. Mus., Texas Tech Univ.* (146):1-23.
- Lee, D. S., L. B. Funderburg Jr., and M. K. Clark. 1982. A distributional survey of North Carolina mammals. Occasional Papers of the North Carolina Biological Survey, No. 1982-10. North Carolina State. Mus. Nat. Hist., Raleigh, North Carolina. 72 pp.
- Linzey, Alicia V., & Donald W. Linzey. 1971. Mammals of the Great Smoky Mountains National Park. The University of Tennessee Press, Knoxville, Tennessee. 114 p.
- Morrison, J. L. 1992. Persistence of the meadow jumping mouse, ZAPUS HUDSONIUS LUTEUS, in New Mexico. *Southwest. Nat.* 37:308-311.
- Muchlinski, A. E. 1988. Population attributes related to the life-history strategy of hibernating ZAPUS HUDSONIUS. *J. Mamm.* 69:860-865.
- Preble, E. A. 1899. Revision of the jumping mice of the genus Zapus. *North American Fauna* 15:1-43.
- Quimby, D.C. 1951. Life history and ecology of the jumping mouse, *Zapus hudsonicus*. *Ecol. Monogr.* 21(1):61-95.
- Schwartz, Charles W., and Elizabeth R. Schwartz. 1981. The wild mammals of Missouri. University of Missouri Press, Columbia. 356 pp.
- U.S. Fish and Wildlife Service (USFWS). 25 March 1997. Proposal to list the Preble's meadow jumping mouse as an endangered species. *Federal Register* 62:14093-14101.
- Whitaker, J.O. Jr. and W.J. Hamilton, Jr. 1998. Mammals of the eastern United States. Cornell Univ. Press, Ithaca, New York. 583 pp.
- Whitaker, J.O., and R. E. Wrigley. 1972. ZAPUS HUDSONIUS. *Am. Soc. Mamm., Mammalian Species No.* 11. 7 pp.
- Whitaker, J.O., Jr. 1963. A study of the meadow jumping mouse *Zapus hudsonius* (Zimmerman), in central New York. *Ecol. Monogr.*, 33(3):215-254.
- Wilson, D. E., and D. M. Reeder (editors). 1993. *Mammal Species of the World: a Taxonomic and Geographic Reference*. Second Edition. Smithsonian Institution Press, Washington, DC. xviii + 1206 pp.
- Wilson, D.E. and S. Ruff. 1999. *The Smithsonian book of North American mammals*. Washington, DC, Smithsonian Inst. Press. 750 p.