



SOUTHEAST GAP ANALYSIS PROJECT



Species Modeling Report

Northern Raccoon

Procyon lotor

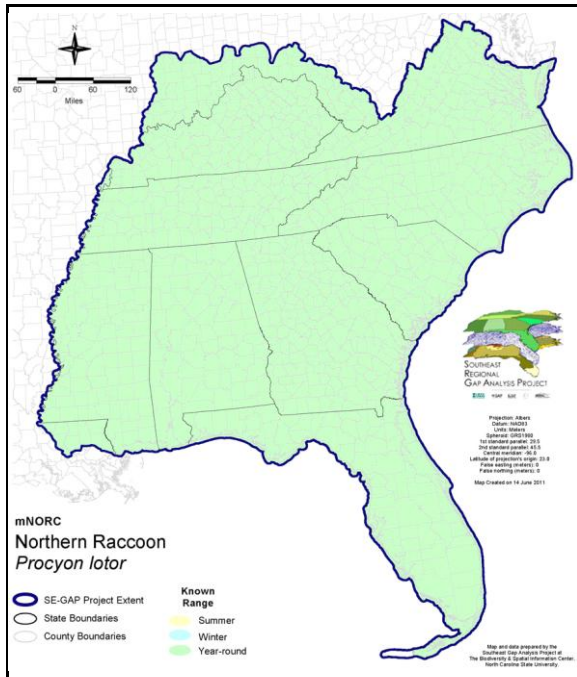
Taxa: Mammalian
 Order: Carnivora
 Family: Procyonidae

SE-GAP Spp Code: **mNORC**

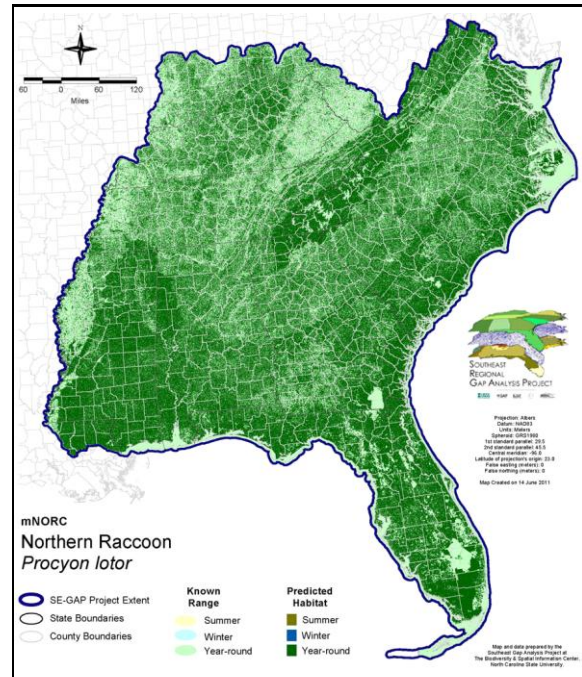
ITIS Species Code: 180575

NatureServe Element Code: AMAJE02010

KNOWN RANGE:



PREDICTED HABITAT:



Range Map Link: http://www.basic.ncsu.edu/segap/datazip/maps/SE_Range_mNORC.pdf

Predicted Habitat Map Link: http://www.basic.ncsu.edu/segap/datazip/maps/SE_Dist_mNORC.pdf

GAP Online Tool Link: <http://www.gapservice.ncsu.edu/segap/segap/index2.php?species=mNORC>

Data Download: http://www.basic.ncsu.edu/segap/datazip/region/vert/mNORC_se00.zip

PROTECTION STATUS:

Reported on March 14, 2011

Federal Status: ---

State Status: AL (GA, FB), ID (PR), KY (N), NY (GS), RI (Not Listed), UT (None), BC (4 (2005)), BC (4 (2005)), QC (Non suivie), SK (NIAC)

NS Global Rank: G5

NS State Rank: AL (S5), AR (S5), AZ (S4), CA (S5), CO (S5), CT (S5), DC (S5), DE (S5), FL (S5), GA (S5), IA (S5), ID (S4), IL (S5), IN (S4), KS (S5), KY (S5), LA (S5), MA (S5), MD (S5), ME (S5), MI (S5), MN (SNR), MO (SNR), MS (S5), MT (S5), NC (S5), ND (SNR), NE (S5), NH (S5), NJ (S5), NM (S4), NV (S5), NY (S5), OH (SNR), OK (S5), OR (S5), PA (S5), RI (S5), SC (SNR), SD (S5), TN (S5), TX (S5), UT (S5), VA (S5), VT (S5), WA (S5), WI (S5), WV (S5), WY (S5), AB (S3), BC (S5), BC (S5), MB (S5), NB (S5), NS (S5), ON (S5), PE (SNA), QC (S5), SK (S5)

SUMMARY OF PREDICTED HABITAT BY MANAGMENT AND GAP PROTECTION STATUS:

	US FWS		US Forest Service		Tenn. Valley Author.		US DOD/ACOE	
	ha	%	ha	%	ha	%	ha	%
Status 1	169,813.4	< 1	33,142.7	< 1	0.0	0	0.0	0
Status 2	260,697.2	< 1	329,789.6	< 1	0.0	0	3,439.2	< 1
Status 3	3,514.4	< 1	2,353,148.1	3	50,711.9	< 1	774,141.6	1
Status 4	110.8	< 1	0.0	0	0.0	0	300.1	< 1
Total	434,135.9	< 1	2,716,080.4	4	50,711.9	< 1	777,880.8	1
	US Dept. of Energy		US Nat. Park Service		NOAA		Other Federal Lands	
	ha	%	ha	%	ha	%	ha	%
Status 1	0.0	0	587,409.8	< 1	1,012.1	< 1	20,689.1	< 1
Status 2	0.0	0	47,556.6	< 1	47,005.7	< 1	109.4	< 1
Status 3	80,829.0	< 1	367,355.3	< 1	0.0	0	7,874.0	< 1
Status 4	0.0	0	0.0	0	0.0	0	0.0	0
Total	80,829.0	< 1	1,002,321.6	1	48,017.7	< 1	28,672.6	< 1
	Native Am. Reserv.		State Park/Hist. Park		State WMA/Gameland		State Forest	
	ha	%	ha	%	ha	%	ha	%
Status 1	0.0	0	858.9	< 1	52.8	< 1	0.0	0
Status 2	0.0	0	17,155.7	< 1	1,049,906.3	1	231.5	< 1
Status 3	24,243.8	< 1	787,705.0	1	208,335.6	< 1	400,222.3	< 1
Status 4	0.0	0	< 0.1	< 1	115,231.1	< 1	43.7	< 1
Total	24,243.8	< 1	805,719.7	1	1,373,525.7	2	400,497.5	< 1
	State Coastal Reserve		ST Nat.Area/Preserve		Other State Lands		Private Cons. Easemt.	
	ha	%	ha	%	ha	%	ha	%
Status 1	0.0	0	7,811.8	< 1	0.0	0	0.0	0
Status 2	37,018.8	< 1	97,201.4	< 1	4.5	< 1	3,789.5	< 1
Status 3	0.0	0	29,482.8	< 1	36,228.6	< 1	154,102.8	< 1
Status 4	0.0	0	0.6	< 1	3,711.8	< 1	< 0.1	< 1
Total	37,018.8	< 1	134,496.7	< 1	39,944.9	< 1	157,892.3	< 1
	Private Land - No Res.		Water		Overall Total			
	ha	%	ha	%	ha	%		
Status 1	0.0	2	0.0	0	820,790.7	1		
Status 2	1.0	< 1	0.0	2	1,893,906.5	3		
Status 3	1,315.4	< 1	1.2	< 1	5,279,211.8	10		
Status 4	64,973,017.7	86	54,905.8	< 1	65,262,442.0	86		
Total	64,974,334.3	86	54,907.1	< 1	73,256,351.0	100		

GAP Status 1: An area having permanent protection from conversion of natural land cover and a mandated management plan in operation to maintain a natural state within which disturbance events (of natural type, frequency, and intensity) are allowed to proceed without interference or are mimicked through management.

GAP Status 2: An area having permanent protection from conversion of natural land cover and a mandated management plan in operation to maintain a primarily natural state, but which may receive use or management practices that degrade the quality of existing natural communities.

GAP Status 3: An area having permanent protection from conversion of natural land cover for the majority of the area, but subject to extractive uses of either a broad, low-intensity type or localized intense type. It also confers protection to federally listed endangered and threatened species throughout the area.

GAP Status 4: Lack of irrevocable easement or mandate to prevent conversion of natural habitat types to anthropogenic habitat types. Allows for intensive use throughout the tract. Also includes those tracts for which the existence of such restrictions or sufficient information to establish a higher status is unknown.

PREDICTED HABITAT MODEL(S):

Year-round Model:

Habitat Description: Found wherever suitable combinations of woods and wetlands (or other water sources) provide acceptable food and den sites, from swamps and marshes (both salt and freshwater) to mesic woods, cultivated areas, and urban situations (Whitaker and Hamilton 1998). Forages nocturnally along creeks and stream bottoms, marshes and mudflats during low tide, and beaches. M. Rubino, 14jan05.

Pisgah National Forest Management Indicator Species Assessment states raccoons are found within 0.5 miles (about 800m) of streams. Hilty and Merenlender (2004) found native species using riparian corridors in N. California were more abundant within 1450m of streams.

Elevation Mask: < 1158m

Hydrography Mask:

Utilizes flowing water features with buffer of 1000m from selected water features.

Utilizes open water features with buffer of 1000m from selected water features.

Utilizes wet vegetation features with buffer of unlimited into selected vegetation features.

Selected Map Units:

Functional Group	Map Unit Name
Anthropogenic	Deciduous Plantations
Anthropogenic	Developed Open Space
Anthropogenic	Evergreen Plantations
Anthropogenic	Low Intensity Developed
Anthropogenic	Medium Intensity Developed
Anthropogenic	Pasture/Hay
Anthropogenic	Successional Grassland/Herbaceous
Anthropogenic	Successional Grassland/Herbaceous (Other)
Anthropogenic	Successional Grassland/Herbaceous (Utility Swath)
Anthropogenic	Successional Shrub/Scrub (Clear Cut)
Anthropogenic	Successional Shrub/Scrub (Other)
Anthropogenic	Successional Shrub/Scrub (Utility Swath)
Beach	Atlantic Coastal Plain Northern Sandy Beach
Beach	Atlantic Coastal Plain Sea Island Beach
Beach	Atlantic Coastal Plain Southern Beach
Beach	Florida Panhandle Beach Vegetation
Beach	South Florida Shell Hash Beach
Beach	Southeast Florida Beach
Beach	Southwest Florida Beach
Beach	Unconsolidated Shore (Beach/Dune)
Brackish Tidal Marsh & Wetland	Atlantic Coastal Plain Central Salt and Brackish Tidal Marsh
Brackish Tidal Marsh & Wetland	Atlantic Coastal Plain Embayed Region Tidal Salt and Brackish Marsh
Brackish Tidal Marsh & Wetland	Atlantic Coastal Plain Indian River Lagoon Tidal Marsh
Brackish Tidal Marsh & Wetland	Atlantic Coastal Plain Northern Sea-Level Fen
Brackish Tidal Marsh & Wetland	Atlantic Coastal Plain Northern Tidal Salt Marsh
Brackish Tidal Marsh & Wetland	Atlantic Coastal Plain Northern Tidal Wooded Swamp
Brackish Tidal Marsh & Wetland	Atlantic Coastal Plain Southern Tidal Wooded Swamp
Brackish Tidal Marsh & Wetland	East Gulf Coastal Plain Tidal Wooded Swamp
Brackish Tidal Marsh & Wetland	Florida Big Bend Salt-Brackish Tidal Marsh
Brackish Tidal Marsh & Wetland	Mississippi Sound Salt and Brackish Tidal Marsh
Brackish Tidal Marsh & Wetland	South Florida Everglades Sawgrass Marsh
Brackish Tidal Marsh & Wetland	South Florida Mangrove Swamp
Brackish Tidal Marsh & Wetland	Southwest Florida Perched Barriers Salt Swamp and Lagoon - Mangrove Modifier
Brackish Tidal Marsh & Wetland	Southwest Florida Perched Barriers Salt Swamp and Lagoon - Marsh Modifier
Coastal Dune & Freshwater Wetland	Atlantic and Gulf Coastal Plain Interdunal Wetland
Coastal Dune & Freshwater Wetland	Atlantic Coastal Plain Northern Dune and Maritime Grassland

Coastal Dune & Freshwater Wetland	Atlantic Coastal Plain Southern Dune and Maritime Grassland
Coastal Dune & Freshwater Wetland	East Gulf Coastal Plain Dune and Coastal Grassland
Coastal Dune & Freshwater Wetland	Southwest Florida Dune and Coastal Grassland
Forest/Woodland	Alabama Ketona Glade and Woodland
Forest/Woodland	Allegheny-Cumberland Dry Oak Forest and Woodland - Pine Modifier
Forest/Woodland	Appalachian Hemlock-Hardwood Forest
Forest/Woodland	Appalachian Serpentine Woodland
Forest/Woodland	Atlantic Coastal Plain Central Maritime Forest
Forest/Woodland	Atlantic Coastal Plain Dry and Dry-Mesic Oak Forest
Forest/Woodland	Atlantic Coastal Plain Fall-Line Sandhills Longleaf Pine Woodland - Loblolly Modifier
Forest/Woodland	Atlantic Coastal Plain Fall-line Sandhills Longleaf Pine Woodland - Offsite Hardwood Modifier
Forest/Woodland	Atlantic Coastal Plain Fall-line Sandhills Longleaf Pine Woodland - Open Understory Modifier
Forest/Woodland	Atlantic Coastal Plain Fall-line Sandhills Longleaf Pine Woodland - Scrub/Shrub Understory Modifier
Forest/Woodland	Atlantic Coastal Plain Mesic Hardwood and Mixed Forest
Forest/Woodland	Atlantic Coastal Plain Northern Maritime Forest
Forest/Woodland	Atlantic Coastal Plain Northern Mixed Oak-Heath Forest
Forest/Woodland	Atlantic Coastal Plain Southern Maritime Forest
Forest/Woodland	Atlantic Coastal Plain Upland Longleaf Pine Woodland
Forest/Woodland	Central and Southern Appalachian Montane Oak Forest
Forest/Woodland	Central and Southern Appalachian Northern Hardwood Forest
Forest/Woodland	Central and Southern Appalachian Spruce-Fir Forest
Forest/Woodland	Central Appalachian Oak and Pine Forest
Forest/Woodland	East Gulf Coastal Plain Black Belt Calcareous Prairie and Woodland - Woodland Modifier
Forest/Woodland	East Gulf Coastal Plain Interior Shortleaf Pine-Oak Forest - Hardwood Modifier
Forest/Woodland	East Gulf Coastal Plain Interior Shortleaf Pine-Oak Forest - Mixed Modifier
Forest/Woodland	East Gulf Coastal Plain Interior Upland Longleaf Pine Woodland - Loblolly Modifier
Forest/Woodland	East Gulf Coastal Plain Interior Upland Longleaf Pine Woodland - Open Understory Modifier
Forest/Woodland	East Gulf Coastal Plain Interior Upland Longleaf Pine Woodland - Scrub/Shrub Modifier
Forest/Woodland	East Gulf Coastal Plain Limestone Forest
Forest/Woodland	East Gulf Coastal Plain Maritime Forest
Forest/Woodland	East Gulf Coastal Plain Northern Dry Upland Hardwood Forest - Offsite Pine Modifier
Forest/Woodland	East Gulf Coastal Plain Northern Loess Bluff Forest
Forest/Woodland	East Gulf Coastal Plain Northern Loess Plain Oak-Hickory Upland - Juniper Modifier
Forest/Woodland	East Gulf Coastal Plain Northern Mesic Hardwood Forest
Forest/Woodland	East Gulf Coastal Plain Southern Mesic Slope Forest
Forest/Woodland	Florida Longleaf Pine Sandhill - Open Understory Modifier
Forest/Woodland	Florida Longleaf Pine Sandhill - Scrub/Shrub Understory Modifier
Forest/Woodland	Florida Peninsula Inland Scrub
Forest/Woodland	Mississippi Delta Maritime Forest
Forest/Woodland	Northeastern Interior Dry Oak Forest-Hardwood Modifier
Forest/Woodland	South Florida Pine Rockland
Forest/Woodland	South-Central Interior Mesophytic Forest
Forest/Woodland	Southeast Florida Coastal Strand and Maritime Hammock
Forest/Woodland	Southeastern Interior Longleaf Pine Woodland
Forest/Woodland	Southern and Central Appalachian Cove Forest
Forest/Woodland	Southern and Central Appalachian Mafic Glade and Barrens
Forest/Woodland	Southern and Central Appalachian Oak Forest
Forest/Woodland	Southern and Central Appalachian Oak Forest - Xeric
Forest/Woodland	Southern Appalachian Low Mountain Pine Forest
Forest/Woodland	Southern Appalachian Montane Pine Forest and Woodland
Forest/Woodland	Southern Coastal Plain Oak Dome and Hammock
Forest/Woodland	Southern Piedmont Dry Oak-Heath Forest - Virginia/Pitch Pine Modifier
Forest/Woodland	Southern Piedmont Mafic Hardpan Woodland
Forest/Woodland	Southern Piedmont Mesic Forest
Forest/Woodland	Southern Piedmont Northern Triassic Basin Dry Forest
Forest/Woodland	Southern Ridge and Valley Dry Calcareous Forest - Pine Modifier

Forest/Woodland	Southwest Florida Coastal Strand and Maritime Hammock
Freshwater Tidal Marsh & Wetland	Atlantic Coastal Plain Central Fresh-Oligohaline Tidal Marsh
Freshwater Tidal Marsh & Wetland	Atlantic Coastal Plain Embayed Region Tidal Freshwater Marsh
Freshwater Tidal Marsh & Wetland	Atlantic Coastal Plain Northern Fresh and Oligohaline Tidal Marsh
Freshwater Tidal Marsh & Wetland	Florida Big Bend Fresh-Oligohaline Tidal Marsh
Prairie	Bluegrass Basin Savanna and Woodland
Prairie	East Gulf Coastal Plain Black Belt Calcareous Prairie and Woodland
Prairie	East Gulf Coastal Plain Black Belt Calcareous Prairie and Woodland - Herbaceous Modifier
Prairie	Pennyroyal Karst Plain Prairie and Barrens
Prairie	Southern Ridge and Valley Patch Prairie
Prairie	Western Highland Rim Prairie and Barrens
Wetlands	Atlantic Coastal Plain Blackwater Stream Floodplain Forest - Forest Modifier
Wetlands	Atlantic Coastal Plain Blackwater Stream Floodplain Forest - Herbaceous Modifier
Wetlands	Atlantic Coastal Plain Brownwater Stream Floodplain Forest
Wetlands	Atlantic Coastal Plain Clay-Based Carolina Bay Forested Wetland
Wetlands	Atlantic Coastal Plain Clay-Based Carolina Bay Herbaceous Wetland
Wetlands	Atlantic Coastal Plain Depression Pondshore
Wetlands	Atlantic Coastal Plain Large Natural Lakeshore
Wetlands	Atlantic Coastal Plain Nonriverine Swamp and Wet Hardwood Forest - Taxodium/Nyssa Modifier
Wetlands	Atlantic Coastal Plain Nonriverine Swamp and Wet Hardwood Forest - Oak Dominated Modifier
Wetlands	Atlantic Coastal Plain Northern Basin Peat Swamp
Wetlands	Atlantic Coastal Plain Northern Basin Swamp and Wet Hardwood Forest
Wetlands	Atlantic Coastal Plain Northern Pondshore
Wetlands	Atlantic Coastal Plain Northern Wet Longleaf Pine Savanna and Flatwoods
Wetlands	Atlantic Coastal Plain Peatland Pocosin
Wetlands	Atlantic Coastal Plain Sandhill Seep
Wetlands	Atlantic Coastal Plain Small Blackwater River Floodplain Forest
Wetlands	Atlantic Coastal Plain Small Brownwater River Floodplain Forest
Wetlands	Atlantic Coastal Plain Southern Wet Pine Savanna and Flatwoods
Wetlands	Atlantic Coastal Plain Streamhead Seepage Swamp, Pocosin, and Baygall
Wetlands	Atlantic Coastal Plain Xeric River Dune
Wetlands	Central Appalachian Floodplain - Forest Modifier
Wetlands	Central Appalachian Floodplain - Herbaceous Modifier
Wetlands	Central Appalachian Riparian - Forest Modifier
Wetlands	Central Appalachian Riparian - Herbaceous Modifier
Wetlands	Central Florida Herbaceous Pondshore
Wetlands	Central Florida Herbaceous Seep
Wetlands	Central Florida Pine Flatwoods
Wetlands	Central Interior Highlands and Appalachian Sinkhole and Depression Pond
Wetlands	Cumberland Riverscour
Wetlands	East Gulf Coastal Plain Interior Shrub Bog
Wetlands	East Gulf Coastal Plain Large River Floodplain Forest - Forest Modifier
Wetlands	East Gulf Coastal Plain Large River Floodplain Forest - Herbaceous Modifier
Wetlands	East Gulf Coastal Plain Near-Coast Pine Flatwoods - Offsite Hardwood Modifier
Wetlands	East Gulf Coastal Plain Near-Coast Pine Flatwoods - Open Understory Modifier
Wetlands	East Gulf Coastal Plain Near-Coast Pine Flatwoods - Scrub/Shrub Understory Modifier
Wetlands	East Gulf Coastal Plain Northern Depression Pondshore
Wetlands	East Gulf Coastal Plain Northern Seepage Swamp
Wetlands	East Gulf Coastal Plain Small Stream and River Floodplain Forest
Wetlands	East Gulf Coastal Plain Southern Depression Pondshore
Wetlands	East Gulf Coastal Plain Southern Loblolly-Hardwood Flatwoods
Wetlands	East Gulf Coastal Plain Treeless Savanna and Wet Prairie
Wetlands	Floridian Highlands Freshwater Marsh
Wetlands	Lower Mississippi River Bottomland and Floodplain Forest
Wetlands	Lower Mississippi River Bottomland Depressions - Forest Modifier
Wetlands	Lower Mississippi River Bottomland Depressions - Herbaceous Modifier

Wetlands	Mississippi River Low Floodplain (Bottomland) Forest
Wetlands	Mississippi River Riparian Forest
Wetlands	North-Central Appalachian Acidic Swamp
Wetlands	North-Central Appalachian Seepage Fen
Wetlands	North-Central Interior and Appalachian Rich Swamp
Wetlands	South Florida Bayhead Swamp
Wetlands	South Florida Cypress Dome
Wetlands	South Florida Dwarf Cypress Savanna
Wetlands	South Florida Freshwater Slough and Gator Hole
Wetlands	South Florida Hardwood Hammock
Wetlands	South Florida Pine Flatwoods
Wetlands	South Florida Pond-Apple/Popash Slough
Wetlands	South Florida Wet Marl Prairie
Wetlands	South Florida Willow Head
Wetlands	South-Central Interior Large Floodplain - Forest Modifier
Wetlands	South-Central Interior Large Floodplain - Herbaceous Modifier
Wetlands	South-Central Interior Small Stream and Riparian
Wetlands	South-Central Interior/Upper Coastal Plain Wet Flatwoods
Wetlands	Southern and Central Appalachian Bog and Fen
Wetlands	Southern Appalachian Seepage Wetland
Wetlands	Southern Coastal Plain Blackwater River Floodplain Forest
Wetlands	Southern Coastal Plain Herbaceous Seepage Bog
Wetlands	Southern Coastal Plain Hydric Hammock
Wetlands	Southern Coastal Plain Nonriverine Basin Swamp
Wetlands	Southern Coastal Plain Nonriverine Cypress Dome
Wetlands	Southern Coastal Plain Seepage Swamp and Baygall
Wetlands	Southern Coastal Plain Spring-run Stream Aquatic Vegetation
Wetlands	Southern Piedmont Large Floodplain Forest - Forest Modifier
Wetlands	Southern Piedmont Large Floodplain Forest - Herbaceous Modifier
Wetlands	Southern Piedmont Seepage Wetland
Wetlands	Southern Piedmont Small Floodplain and Riparian Forest
Wetlands	Southern Piedmont/Ridge and Valley Upland Depression Swamp
Wetlands	Western Highland Rim Seepage Fen

CITATIONS: Armstrong, D. M. 1975. Rocky Mountain mammals. Rocky Mountain Nature Assoc., Inc. 174 pp.

Baker, Rollin H. 1983. Michigan mammals. Michigan State University Press. 642 pp.

Banfield, A.W.F. 1974. The mammals of Canada. University of Toronto Press, Toronto.

Caire, W., J. D. Tyler, B. P. Glass, and M. A. Mares. Z. Marsh (illustrator). 1989. Mammals of Oklahoma. University of Oklahoma Press, Norman. Oklahoma. 567 pp.

Clearwater, Denise H., et. al. 1989. Taxonomic analysis of the coastal marsh raccoon (*PROCYON LOTOR MARITIMUS*) in Maryland. *Brimleyana*. No.15:31-36.

Conover, M. R. 1990. Reducing mammalian predation on eggs by using a conditioned taste aversion to deceive predators. *J. Wildl. Manage.* 54:360-365.

Decker, D. M., and W. C. Wozencraft. 1991. Phylogenetic analysis of recent procyonid genera. *J. Mamm.* 72:42-55.

Hall, E. R. 1981. The Mammals of North America. Second edition. 2 Volumes. John Wiley and Sons, New York, New York. 1181 p.

Hamilton, William J., Jr., and John O. Whitaker, Jr. 1979. Mammals of the eastern United States. Cornell Univ. Press, Ithaca, New York. 346 pp.

Hilty, J.A., and A.M. Merenlender. 2004. Use of Riparian Corridors and Vineyards by Mammalian Predators in Northern California. *Conservation Biology* 18 (1), 126-135.

Kazacos, K. R. 1983. Raccoon roundworms (*BAYLISASCARIS PROCYONIS*) - a cause of animal and human disease. Purdue Research Foundation, West Lafayette, Indiana. 25 pp.

Kidder, J. D., et al. 1989. Prevalence of patent *BAYLISASCARIS PROCYONIS* infection in raccoons (*PROCYON LOTOR*) in Ithaca, New York. *J. Parasitol.* 75:870-874.

Kissell, R. E., Jr., and M. L. Kennedy. 1992. Ecologic relationships of co-occurring populations of opossums (*DIDELPHIS VIRGINIANA*) and raccoons (*PROCYON LOTOR*) in Tennessee. *J. Mamm.* 73:808-813.

Lee, D. S., L. B. Funderburg Jr., and M. K. Clark. 1982. A distributional survey of North Carolina mammals. Occasional Papers of the North Carolina Biological Survey, No. 1982-10. North Carolina State. Mus. Nat. Hist., Raleigh, North Carolina. 72 pp.

Lotze, J.H. and S. Anderson 1979. *Procyon lutor*. *Am. Soc. Mamm., Mammalian Species No.* 119. 8 pp.

Ritke, M. E., and M. L. Kennedy. 1988. Intraspecific morphologic variation in the raccoon (*PROCYON LOTOR*) and its relationship to selected environmental variables. *Southwest. Nat.* 33:295-314.

Schwartz, Charles W., and Elizabeth R. Schwartz. 1981. *The wild mammals of Missouri*. University of Missouri Press, Columbia. 356 pp.

Taulman, J. F., and J. h. Williamson. 1993. A simple apparatus and technique for anesthetizing raccoons. *Am. Midl. Nat.* 129-:210-214.

Whitaker, J.O. Jr. and W.J. Hamilton, Jr. 1998. *Mammals of the eastern United States*. Cornell Univ. Press, Ithaca, New York. 583 pp.

Wilson, D. E., and D. M. Reeder (editors). 1993. *Mammal Species of the World:a Taxonomic and Geographic Reference*. Second Edition. Smithsonian Institution Press, Washington, DC. xviii + 1206 pp.

For more information:: SE-GAP Analysis Project / BaSIC
127 David Clark Labs
Dept. of Biology, NCSU
Raleigh, NC 27695-7617
(919) 513-2853
www.basic.ncsu.edu/segap

Compiled: 15 September 2011

This data was compiled and/or developed
by the Southeast GAP Analysis Project at
The Biodiversity and Spatial Information
Center, North Carolina State University.