



# SOUTHEAST GAP ANALYSIS PROJECT



## Species Modeling Report

### Virginia Opossum

*Didelphis virginiana*

Taxa: Mammalian

Order: Didelphimorphia

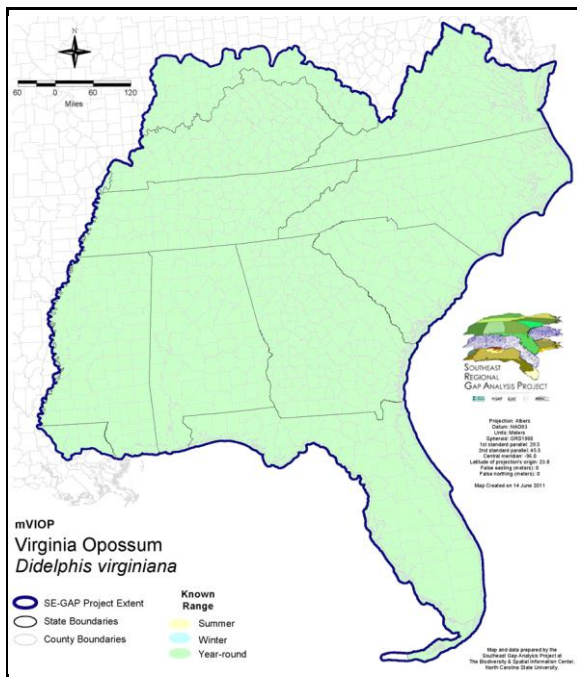
Family: Didelphidae

SE-GAP Spp Code: **mVIOP**

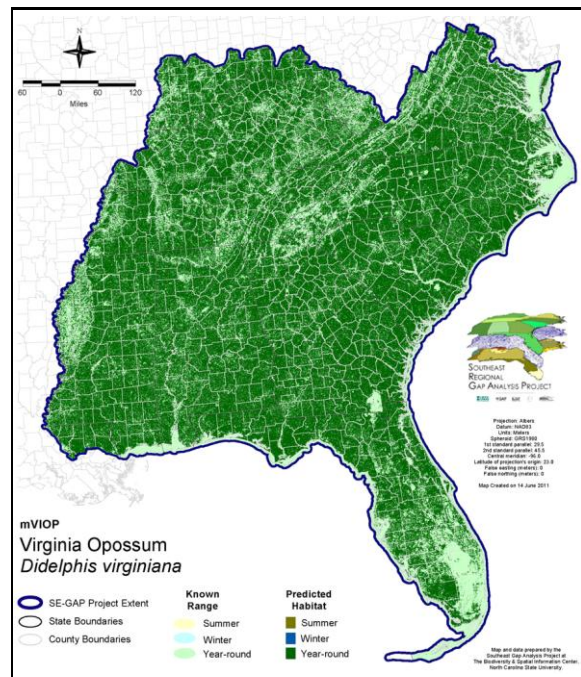
ITIS Species Code: 179921

NatureServe Element Code: AMAAA01010

#### KNOWN RANGE:



#### PREDICTED HABITAT:



Range Map Link: [http://www.basic.ncsu.edu/segap/datazip/maps/SE\\_Range\\_mVIOP.pdf](http://www.basic.ncsu.edu/segap/datazip/maps/SE_Range_mVIOP.pdf)

Predicted Habitat Map Link: [http://www.basic.ncsu.edu/segap/datazip/maps/SE\\_Dist\\_mVIOP.pdf](http://www.basic.ncsu.edu/segap/datazip/maps/SE_Dist_mVIOP.pdf)

GAP Online Tool Link: <http://www.gapservice.ncsu.edu/segap/segap/index2.php?species=mVIOP>

Data Download: [http://www.basic.ncsu.edu/segap/datazip/region/vert/mVIOP\\_se00.zip](http://www.basic.ncsu.edu/segap/datazip/region/vert/mVIOP_se00.zip)

#### PROTECTION STATUS:

Reported on March 14, 2011

Federal Status: ---

State Status: AL (GA, FB), KY (N), NY (GS), RI (Not Listed), UT (None), BC (7 (2005)), QC (Non suivie)

NS Global Rank: G5

NS State Rank: AL (S5), AR (S5), AZ (S2S3), CA (SNA), CO (S1), CT (S5), DC (S5), DE (S5), FL (SNR), GA (S5), IA (S5), ID (SNA), IL (S5), IN (S4), KS (S5), KY (S5), LA (S5), MA (S5), MD (S5), ME (S4), MI (S5), MN (S5), MO (S5), MS (S5), NC (S5), ND (SU), NE (S5), NH (S5), NJ (S5), NM (SNA), NY (S5), OH (S5), OK (S5), OR (SNA), PA (S5), RI (S5), SC (S5), SD (S4), TN (S5), TX (S5), UT (SNR), VA (S5), VT (S4), WA (SNA), WI (S5), WV (S5), WY (S5), BC (SNA), ON (S4), QC (SNR)

**SUMMARY OF PREDICTED HABITAT BY MANAGMENT AND GAP PROTECTION STATUS:**

	US FWS		US Forest Service		Tenn. Valley Author.		US DOD/ACOE	
	ha	%	ha	%	ha	%	ha	%
Status 1	138,575.0	< 1	16,242.8	< 1	0.0	0	0.0	0
Status 2	225,484.4	< 1	182,696.5	< 1	0.0	0	5,085.0	< 1
Status 3	3,250.2	< 1	1,668,938.9	2	77,142.0	< 1	788,268.7	< 1
Status 4	173.4	< 1	< 0.1	< 1	0.0	0	122.1	< 1
Total	367,483.0	< 1	1,867,878.3	2	77,142.0	< 1	793,475.8	< 1
	US Dept. of Energy		US Nat. Park Service		NOAA		Other Federal Lands	
	ha	%	ha	%	ha	%	ha	%
Status 1	0.0	0	302,756.8	< 1	496.5	< 1	20,301.8	< 1
Status 2	0.0	0	27,822.0	< 1	31,808.9	< 1	107.1	< 1
Status 3	77,979.5	< 1	343,928.2	< 1	0.0	0	6,131.3	< 1
Status 4	0.0	0	1.0	< 1	0.0	0	0.0	0
Total	77,979.5	< 1	674,508.6	< 1	32,305.4	< 1	26,540.1	< 1
	Native Am. Reserv.		State Park/Hist. Park		State WMA/Gameland		State Forest	
	ha	%	ha	%	ha	%	ha	%
Status 1	0.0	0	1,262.6	< 1	63.0	< 1	0.0	0
Status 2	0.0	0	7,257.8	< 1	687,776.1	< 1	573.2	< 1
Status 3	17,856.1	< 1	646,059.7	< 1	217,294.0	< 1	435,308.0	< 1
Status 4	0.0	0	< 0.1	< 1	106,090.4	< 1	49.0	< 1
Total	17,856.1	< 1	654,580.2	< 1	1,011,223.5	1	435,930.2	< 1
	State Coastal Reserve		ST Nat.Area/Preserve		Other State Lands		Private Cons. Easemt.	
	ha	%	ha	%	ha	%	ha	%
Status 1	0.0	0	9,248.1	< 1	0.0	0	0.0	0
Status 2	19,749.3	< 1	75,290.1	< 1	7.0	< 1	3,772.8	< 1
Status 3	0.0	0	25,836.1	< 1	37,363.7	< 1	151,608.8	< 1
Status 4	0.0	0	0.3	< 1	4,754.6	< 1	< 0.1	< 1
Total	19,749.3	< 1	110,374.7	< 1	42,125.3	< 1	155,381.7	< 1
	Private Land - No Res.		Water		Overall Total			
	ha	%	ha	%	ha	%		
Status 1	0.0	0	0.0	0	488,946.6	< 1		
Status 2	0.4	< 1	0.0	3	1,267,430.9	1		
Status 3	1,369.5	< 1	1.2	< 1	4,498,335.7	7		
Status 4	77,982,713.6	90	86,188.1	< 1	78,286,010.4	91		
Total	77,984,083.4	90	86,189.6	< 1	84,540,723.6	100		

GAP Status 1: An area having permanent protection from conversion of natural land cover and a mandated management plan in operation to maintain a natural state within which disturbance events (of natural type, frequency, and intensity) are allowed to proceed without interference or are mimicked through management.

GAP Status 2: An area having permanent protection from conversion of natural land cover and a mandated management plan in operation to maintain a primarily natural state, but which may receive use or management practices that degrade the quality of existing natural communities.

GAP Status 3: An area having permanent protection from conversion of natural land cover for the majority of the area, but subject to extractive uses of either a broad, low-intensity type or localized intense type. It also confers protection to federally listed endangered and threatened species throughout the area.

GAP Status 4: Lack of irrevocable easement or mandate to prevent conversion of natural habitat types to anthropogenic habitat types. Allows for intensive use throughout the tract. Also includes those tracts for which the existence of such restrictions or sufficient information to establish a higher status is unknown.

## PREDICTED HABITAT MODEL(S):

### Year-round Model:

Habitat Description: Virginia opossums are found throughout most of the United States. They use a wide variety of habitats, but prefer moister, wooded situations (Kissel and Kennedy 1992; Layne et al. 1977; McManus 1974). Found in tropical hammock, coastal mangrove, mixed cypress/flatwoods, prairie, sawgrass with tree islands, longleaf pine/turkey oak, salt marsh, willow, beaches, coastal scrub, suburbia, agricultural, and disturbed areas (Layne 1984; Pearson 1954). They have been trapped in bayheads and river swamps (Moore 1946). They may show a preference for habitat diversity/edge effect and are found in even heavily urban areas. They den in ditch banks, snags, rocky crevices, among windfalls and undisturbed man-made structures. Contrary to suggestions by early naturalists, they have well defined home ranges, (Ryser 1995). The U.S. mating season is January-July. There are commonly 2 litters/year, sometimes 3. Gestation lasts 13 days. As many as 23 offspring may compete for 13 or so teats. An average of 8-9 young are weaned after 10-12 weeks. Sexual maturity is reached at 9 months. Juveniles experience a high rate of mortality (Hossler et al. 1994). Females seldom live through more than one reproductive season. Stacy Smith, 9June05

\*\*\* Maximum home range size reported for Virginia Opossums was 108 ha. For males in Wisconsin. (Gillette 1980). Edge buffer distance based on the radius of 108 ha (610m).

Mask of Forest/Open Ecotone: Include within 250m of ecotone edge.

Mask of Woodlands and Shrublands: Include all woodland and shrubland interiors and 250m buffer from them.

### Selected Map Units:

Functional Group	Map Unit Name
Anthropogenic	Deciduous Plantations
Anthropogenic	Developed Open Space
Anthropogenic	Evergreen Plantations
Anthropogenic	Low Intensity Developed
Anthropogenic	Medium Intensity Developed
Anthropogenic	Pasture/Hay
Anthropogenic	Row Crop
Anthropogenic	Successional Grassland/Herbaceous
Anthropogenic	Successional Grassland/Herbaceous (Other)
Anthropogenic	Successional Grassland/Herbaceous (Utility Swath)
Anthropogenic	Successional Shrub/Scrub (Clear Cut)
Anthropogenic	Successional Shrub/Scrub (Other)
Anthropogenic	Successional Shrub/Scrub (Utility Swath)
Bald	Central Appalachian Montane Rocky Bald - Herbaceous Modifier
Bald	Central Appalachian Montane Rocky Bald - Shrub Modifier
Bald	Southern Appalachian Grass and Shrub Bald - Herbaceous Modifier
Bald	Southern Appalachian Grass and Shrub Bald - Shrub Modifier
Brackish Tidal Marsh & Wetland	Atlantic Coastal Plain Central Salt and Brackish Tidal Marsh
Brackish Tidal Marsh & Wetland	Atlantic Coastal Plain Embayed Region Tidal Salt and Brackish Marsh
Brackish Tidal Marsh & Wetland	Atlantic Coastal Plain Indian River Lagoon Tidal Marsh
Brackish Tidal Marsh & Wetland	Atlantic Coastal Plain Northern Sea-Level Fen
Brackish Tidal Marsh & Wetland	Atlantic Coastal Plain Northern Tidal Salt Marsh
Brackish Tidal Marsh & Wetland	Atlantic Coastal Plain Northern Tidal Wooded Swamp
Brackish Tidal Marsh & Wetland	Atlantic Coastal Plain Southern Tidal Wooded Swamp
Brackish Tidal Marsh & Wetland	East Gulf Coastal Plain Tidal Wooded Swamp
Brackish Tidal Marsh & Wetland	Florida Big Bend Salt-Brackish Tidal Marsh
Brackish Tidal Marsh & Wetland	Mississippi Sound Salt and Brackish Tidal Marsh
Brackish Tidal Marsh & Wetland	South Florida Everglades Sawgrass Marsh
Brackish Tidal Marsh & Wetland	South Florida Mangrove Swamp
Brackish Tidal Marsh & Wetland	Southwest Florida Perched Barriers Salt Swamp and Lagoon - Mangrove Modifier
Brackish Tidal Marsh & Wetland	Southwest Florida Perched Barriers Salt Swamp and Lagoon - Marsh Modifier
Coastal Dune & Freshwater Wetland	Atlantic and Gulf Coastal Plain Interdunal Wetland

Coastal Dune & Freshwater Wetland	Atlantic Coastal Plain Northern Dune and Maritime Grassland
Coastal Dune & Freshwater Wetland	Atlantic Coastal Plain Southern Dune and Maritime Grassland
Coastal Dune & Freshwater Wetland	East Gulf Coastal Plain Dune and Coastal Grassland
Coastal Dune & Freshwater Wetland	Southwest Florida Dune and Coastal Grassland
Forest/Woodland	Alabama Ketona Glade and Woodland
Forest/Woodland	Allegheny-Cumberland Dry Oak Forest and Woodland
Forest/Woodland	Allegheny-Cumberland Dry Oak Forest and Woodland - Hardwood Modifier
Forest/Woodland	Allegheny-Cumberland Dry Oak Forest and Woodland - Pine Modifier
Forest/Woodland	Appalachian Hemlock-Hardwood Forest
Forest/Woodland	Appalachian Serpentine Woodland
Forest/Woodland	Appalachian Shale Barrens
Forest/Woodland	Atlantic Coastal Plain Central Maritime Forest
Forest/Woodland	Atlantic Coastal Plain Dry and Dry-Mesic Oak Forest
Forest/Woodland	Atlantic Coastal Plain Fall-Line Sandhills Longleaf Pine Woodland - Loblolly Modifier
Forest/Woodland	Atlantic Coastal Plain Fall-line Sandhills Longleaf Pine Woodland - Offsite Hardwood Modifier
Forest/Woodland	Atlantic Coastal Plain Fall-line Sandhills Longleaf Pine Woodland - Open Understory Modifier
Forest/Woodland	Atlantic Coastal Plain Fall-line Sandhills Longleaf Pine Woodland - Scrub/Shrub Understory Modifier
Forest/Woodland	Atlantic Coastal Plain Mesic Hardwood and Mixed Forest
Forest/Woodland	Atlantic Coastal Plain Northern Maritime Forest
Forest/Woodland	Atlantic Coastal Plain Northern Mixed Oak-Heath Forest
Forest/Woodland	Atlantic Coastal Plain Southern Maritime Forest
Forest/Woodland	Atlantic Coastal Plain Upland Longleaf Pine Woodland
Forest/Woodland	Central and Southern Appalachian Montane Oak Forest
Forest/Woodland	Central and Southern Appalachian Northern Hardwood Forest
Forest/Woodland	Central and Southern Appalachian Spruce-Fir Forest
Forest/Woodland	Central Appalachian Alkaline Glade and Woodland
Forest/Woodland	Central Appalachian Oak and Pine Forest
Forest/Woodland	Central Appalachian Pine-Oak Rocky Woodland
Forest/Woodland	Central Interior Highlands Calcareous Glade and Barrens
Forest/Woodland	Central Interior Highlands Dry Acidic Glade and Barrens
Forest/Woodland	Cumberland Sandstone Glade and Barrens
Forest/Woodland	East Gulf Coastal Plain Black Belt Calcareous Prairie and Woodland - Woodland Modifier
Forest/Woodland	East Gulf Coastal Plain Interior Shortleaf Pine-Oak Forest - Hardwood Modifier
Forest/Woodland	East Gulf Coastal Plain Interior Shortleaf Pine-Oak Forest - Mixed Modifier
Forest/Woodland	East Gulf Coastal Plain Interior Shortleaf Pine-Oak Forest - Pine Modifier
Forest/Woodland	East Gulf Coastal Plain Interior Upland Longleaf Pine Woodland - Loblolly Modifier
Forest/Woodland	East Gulf Coastal Plain Interior Upland Longleaf Pine Woodland - Offsite Hardwood Modifier
Forest/Woodland	East Gulf Coastal Plain Interior Upland Longleaf Pine Woodland - Open Understory Modifier
Forest/Woodland	East Gulf Coastal Plain Interior Upland Longleaf Pine Woodland - Scrub/Shrub Modifier
Forest/Woodland	East Gulf Coastal Plain Limestone Forest
Forest/Woodland	East Gulf Coastal Plain Maritime Forest
Forest/Woodland	East Gulf Coastal Plain Northern Dry Upland Hardwood Forest
Forest/Woodland	East Gulf Coastal Plain Northern Dry Upland Hardwood Forest - Offsite Pine Modifier
Forest/Woodland	East Gulf Coastal Plain Northern Loess Bluff Forest
Forest/Woodland	East Gulf Coastal Plain Northern Loess Plain Oak-Hickory Upland - Hardwood Modifier
Forest/Woodland	East Gulf Coastal Plain Northern Loess Plain Oak-Hickory Upland - Juniper Modifier
Forest/Woodland	East Gulf Coastal Plain Northern Mesic Hardwood Forest
Forest/Woodland	East Gulf Coastal Plain Southern Loess Bluff Forest
Forest/Woodland	East Gulf Coastal Plain Southern Mesic Slope Forest
Forest/Woodland	Florida Longleaf Pine Sandhill - Open Understory Modifier
Forest/Woodland	Florida Longleaf Pine Sandhill - Scrub/Shrub Understory Modifier
Forest/Woodland	Florida Peninsula Inland Scrub
Forest/Woodland	Mississippi Delta Maritime Forest
Forest/Woodland	Nashville Basin Limestone Glade
Forest/Woodland	Northeastern Interior Dry Oak Forest - Mixed Modifier
Forest/Woodland	Northeastern Interior Dry Oak Forest - Virginia/Pitch Pine Modifier

Forest/Woodland	Northeastern Interior Dry Oak Forest-Hardwood Modifier
Forest/Woodland	Northern Atlantic Coastal Plain Dry Hardwood Forest
Forest/Woodland	Ridge and Valley Calcareous Valley Bottom Glade and Woodland
Forest/Woodland	South Florida Pine Rockland
Forest/Woodland	South-Central Interior Mesophytic Forest
Forest/Woodland	Southeast Florida Coastal Strand and Maritime Hammock
Forest/Woodland	Southeastern Interior Longleaf Pine Woodland
Forest/Woodland	Southern and Central Appalachian Cove Forest
Forest/Woodland	Southern and Central Appalachian Mafic Glade and Barrens
Forest/Woodland	Southern and Central Appalachian Oak Forest
Forest/Woodland	Southern and Central Appalachian Oak Forest - Xeric
Forest/Woodland	Southern Appalachian Low Mountain Pine Forest
Forest/Woodland	Southern Appalachian Montane Pine Forest and Woodland
Forest/Woodland	Southern Coastal Plain Dry Upland Hardwood Forest
Forest/Woodland	Southern Coastal Plain Oak Dome and Hammock
Forest/Woodland	Southern Interior Low Plateau Dry-Mesic Oak Forest
Forest/Woodland	Southern Interior Low Plateau Dry-Mesic Oak Forest - Evergreen Modifier
Forest/Woodland	Southern Piedmont Dry Oak-(Pine) Forest - Hardwood Modifier
Forest/Woodland	Southern Piedmont Dry Oak-(Pine) Forest - Loblolly Pine Modifier
Forest/Woodland	Southern Piedmont Dry Oak-(Pine) Forest - Mixed Modifier
Forest/Woodland	Southern Piedmont Dry Oak-Heath Forest - Hardwood Modifier
Forest/Woodland	Southern Piedmont Dry Oak-Heath Forest - Mixed Modifier
Forest/Woodland	Southern Piedmont Dry Oak-Heath Forest - Virginia/Pitch Pine Modifier
Forest/Woodland	Southern Piedmont Glade and Barrens
Forest/Woodland	Southern Piedmont Mafic Hardpan Woodland
Forest/Woodland	Southern Piedmont Mesic Forest
Forest/Woodland	Southern Piedmont Northern Triassic Basin Dry Forest
Forest/Woodland	Southern Ridge and Valley Dry Calcareous Forest
Forest/Woodland	Southern Ridge and Valley Dry Calcareous Forest - Hardwood Modifier
Forest/Woodland	Southern Ridge and Valley Dry Calcareous Forest - Pine Modifier
Forest/Woodland	Southwest Florida Coastal Strand and Maritime Hammock
Freshwater Tidal Marsh & Wetland	Atlantic Coastal Plain Central Fresh-Oligohaline Tidal Marsh
Freshwater Tidal Marsh & Wetland	Atlantic Coastal Plain Embayed Region Tidal Freshwater Marsh
Freshwater Tidal Marsh & Wetland	Atlantic Coastal Plain Northern Fresh and Oligohaline Tidal Marsh
Freshwater Tidal Marsh & Wetland	Florida Big Bend Fresh-Oligohaline Tidal Marsh
Prairie	Bluegrass Basin Savanna and Woodland
Prairie	East Gulf Coastal Plain Black Belt Calcareous Prairie and Woodland
Prairie	East Gulf Coastal Plain Black Belt Calcareous Prairie and Woodland - Herbaceous Modifier
Prairie	East Gulf Coastal Plain Jackson Plain Prairie and Barrens
Prairie	East Gulf Coastal Plain Jackson Prairie and Woodland
Prairie	Eastern Highland Rim Prairie and Barrens
Prairie	Eastern Highland Rim Prairie and Barrens - Dry Modifier
Prairie	Florida Dry Prairie
Prairie	Panhandle Florida Limestone Glade
Prairie	Pennyroyal Karst Plain Prairie and Barrens
Prairie	Southern Ridge and Valley Patch Prairie
Prairie	Western Highland Rim Prairie and Barrens
Rock Outcrop	Southern Appalachian Granitic Dome
Rock Outcrop	Southern Piedmont Granite Flatrock
Wetlands	Atlantic Coastal Plain Blackwater Stream Floodplain Forest - Forest Modifier
Wetlands	Atlantic Coastal Plain Blackwater Stream Floodplain Forest - Herbaceous Modifier
Wetlands	Atlantic Coastal Plain Brownwater Stream Floodplain Forest
Wetlands	Atlantic Coastal Plain Clay-Based Carolina Bay Forested Wetland
Wetlands	Atlantic Coastal Plain Clay-Based Carolina Bay Herbaceous Wetland
Wetlands	Atlantic Coastal Plain Depression Pondshore
Wetlands	Atlantic Coastal Plain Large Natural Lakeshore

Wetlands	Atlantic Coastal Plain Nonriverine Swamp and Wet Hardwood Forest - Taxodium/Nyssa Modifier
Wetlands	Atlantic Coastal Plain Nonriverine Swamp and Wet Hardwood Forest - Oak Dominated Modifier
Wetlands	Atlantic Coastal Plain Northern Basin Peat Swamp
Wetlands	Atlantic Coastal Plain Northern Basin Swamp and Wet Hardwood Forest
Wetlands	Atlantic Coastal Plain Northern Pondshore
Wetlands	Atlantic Coastal Plain Northern Wet Longleaf Pine Savanna and Flatwoods
Wetlands	Atlantic Coastal Plain Peatland Pocosin
Wetlands	Atlantic Coastal Plain Sandhill Seep
Wetlands	Atlantic Coastal Plain Small Blackwater River Floodplain Forest
Wetlands	Atlantic Coastal Plain Small Brownwater River Floodplain Forest
Wetlands	Atlantic Coastal Plain Southern Wet Pine Savanna and Flatwoods
Wetlands	Atlantic Coastal Plain Streamhead Seepage Swamp, Pocosin, and Baygall
Wetlands	Atlantic Coastal Plain Xeric River Dune
Wetlands	Central Appalachian Floodplain - Forest Modifier
Wetlands	Central Appalachian Floodplain - Herbaceous Modifier
Wetlands	Central Appalachian Riparian - Forest Modifier
Wetlands	Central Appalachian Riparian - Herbaceous Modifier
Wetlands	Central Florida Herbaceous Pondshore
Wetlands	Central Florida Herbaceous Seep
Wetlands	Central Florida Pine Flatwoods
Wetlands	Central Interior Highlands and Appalachian Sinkhole and Depression Pond
Wetlands	Cumberland Riverscour
Wetlands	East Gulf Coastal Plain Interior Shrub Bog
Wetlands	East Gulf Coastal Plain Jackson Plain Dry Flatwoods - Open Understory Modifier
Wetlands	East Gulf Coastal Plain Jackson Plain Dry Flatwoods - Scrub/Shrub Understory Modifier
Wetlands	East Gulf Coastal Plain Large River Floodplain Forest - Forest Modifier
Wetlands	East Gulf Coastal Plain Large River Floodplain Forest - Herbaceous Modifier
Wetlands	East Gulf Coastal Plain Near-Coast Pine Flatwoods - Offsite Hardwood Modifier
Wetlands	East Gulf Coastal Plain Near-Coast Pine Flatwoods - Open Understory Modifier
Wetlands	East Gulf Coastal Plain Near-Coast Pine Flatwoods - Scrub/Shrub Understory Modifier
Wetlands	East Gulf Coastal Plain Northern Depression Pondshore
Wetlands	East Gulf Coastal Plain Northern Seepage Swamp
Wetlands	East Gulf Coastal Plain Small Stream and River Floodplain Forest
Wetlands	East Gulf Coastal Plain Southern Depression Pondshore
Wetlands	East Gulf Coastal Plain Southern Loblolly-Hardwood Flatwoods
Wetlands	East Gulf Coastal Plain Treeless Savanna and Wet Prairie
Wetlands	Floridian Highlands Freshwater Marsh
Wetlands	Lower Mississippi River Bottomland and Floodplain Forest
Wetlands	Lower Mississippi River Bottomland Depressions - Forest Modifier
Wetlands	Lower Mississippi River Bottomland Depressions - Herbaceous Modifier
Wetlands	Mississippi River Low Floodplain (Bottomland) Forest
Wetlands	Mississippi River Riparian Forest
Wetlands	North-Central Appalachian Acidic Swamp
Wetlands	North-Central Appalachian Seepage Fen
Wetlands	North-Central Interior and Appalachian Rich Swamp
Wetlands	South Florida Bayhead Swamp
Wetlands	South Florida Cypress Dome
Wetlands	South Florida Dwarf Cypress Savanna
Wetlands	South Florida Freshwater Slough and Gator Hole
Wetlands	South Florida Hardwood Hammock
Wetlands	South Florida Pine Flatwoods
Wetlands	South Florida Pond-Apple/Popash Slough
Wetlands	South Florida Wet Marl Prairie
Wetlands	South Florida Willow Head
Wetlands	South-Central Interior Large Floodplain - Forest Modifier
Wetlands	South-Central Interior Large Floodplain - Herbaceous Modifier

Wetlands	South-Central Interior Small Stream and Riparian
Wetlands	South-Central Interior/Upper Coastal Plain Wet Flatwoods
Wetlands	Southern and Central Appalachian Bog and Fen
Wetlands	Southern Appalachian Seepage Wetland
Wetlands	Southern Coastal Plain Blackwater River Floodplain Forest
Wetlands	Southern Coastal Plain Herbaceous Seepage Bog
Wetlands	Southern Coastal Plain Hydric Hammock
Wetlands	Southern Coastal Plain Nonriverine Basin Swamp
Wetlands	Southern Coastal Plain Nonriverine Cypress Dome
Wetlands	Southern Coastal Plain Seepage Swamp and Baygall
Wetlands	Southern Coastal Plain Spring-run Stream Aquatic Vegetation
Wetlands	Southern Piedmont Large Floodplain Forest - Forest Modifier
Wetlands	Southern Piedmont Large Floodplain Forest - Herbaceous Modifier
Wetlands	Southern Piedmont Seepage Wetland
Wetlands	Southern Piedmont Small Floodplain and Riparian Forest
Wetlands	Southern Piedmont/Ridge and Valley Upland Depression Swamp
Wetlands	Western Highland Rim Seepage Fen

**CITATIONS:**

- Baker, Rollin H. 1983. Michigan mammals. Michigan State University Press. 642 pp.
- Conover, M. R. 1990. Reducing mammalian predation on eggs by using a conditioned taste aversion to deceive predators. *J. Wildl. Manage.* 54:360-365.
- Fitch, H.S. and H.W. Shirer. 1970. A radiotelemetric study of spatial relationships in the opossum. *Am. Midl. Nat.* 84:170-186.
- Gardner, A. L. 1982. Virginia opossum. Pages 3-36 in Chapman, J. A., and G. A. Feldhamer, eds. *Wild mammals of North America. Biology, management, and economics.* Johns Hopkins Univ. Press, Baltimore.
- Godin, A.J. 1977. *Wild Mammals of New England.* Johns Hopkins University Press, Baltimore. 304 pp.
- Hall, E. R. 1981. *The Mammals of North America.* Second edition. 2 Volumes. John Wiley and Sons, New York, New York. 1181 p.
- Hamilton, William J., Jr., and John O. Whitaker, Jr. 1979. *Mammals of the eastern United States.* Cornell Univ. Press, Ithaca, New York. 346 pp.
- Hartman, C.G. 1962. *Possums.* Univ. Texas Press, Austin. 174 pp.
- Hossler, R. J., J. B. McAninch, and J. D. Harder. 1994. Maternal denning behavior and survival of juveniles in opossums in southeastern New York. *J. Mamm.* 75:60-70.
- Keefe, J.F. 1967. *The world of the opossum.* 144 pp.
- Kissell, R. E., Jr., and M. L. Kennedy. 1992. Ecologic relationships of co-occurring populations of opossums (*DIDELPHIS VIRGINIANA*) and raccoons (*PROCYON LOTOR*) in Tennessee. *J. Mamm.* 73:808-813.
- Lay, D.W. 1942. Ecology of the opossum in eastern Texas. *Jour. Mammal.* 23:147-159.
- Layne, J. N. 1984. The land mammals of South Florida. *Environments of South Florida, Past and Present II.* P. J. Gleason ed. Coral Gables, Florida: Miami Geological Society; pp. 269-295.
- Layne, J.N.; Stallcup, J.A.; Woolfenden, G.E.; McCauley, M.N.; Worley, D.J. 1977. *Fish and Wildlife Inventory of the Seven-County Region Included in the Central Florida Phosphate Industry Area-Wide Environmental Impact Study. Volumes I and II.* Also avai
- Llewellyn, L.M. and F.H. Dale. 1964. Notes on the ecology of the opossum in Maryland. *Jour. Mamm.* 45:113-122.
- McManus, J.J. 1971. Activity of captive *Didelphis marsupialis*. (sic) *Jour. Mamm.* 52:846-848.
- McManus, J.J. 1974. *Didelphis virginiana.* *Am. Soc. Mammalogists, Mammalian Species No.* 40 pp. 1-6.
- Moore, J. C. 1946. Mammals from Welaka, Putnam county, Florida. *Journal of Mammalogy.* 27(1):49-59.
- Pearson, P. G. 1954. Mammals of Gulf Hammock, Levy County, Florida. *The American Midland Naturalist.* 51(2):468-480.
- Ryser J. 1995. Activity, movement and home range of Virginia opossum (*Didelphis virginiana*) in Florida. *Bull Florida Mus Nat Hist* 38: 177-194

For more information:: SE-GAP Analysis Project / BaSIC  
127 David Clark Labs  
Dept. of Biology, NCSU  
Raleigh, NC 27695-7617  
(919) 513-2853  
[www.basic.ncsu.edu/segap](http://www.basic.ncsu.edu/segap)

Compiled: 15 September 2011

This data was compiled and/or developed  
by the Southeast GAP Analysis Project at  
The Biodiversity and Spatial Information  
Center, North Carolina State University.