



SOUTHEAST GAP ANALYSIS PROJECT



Species Modeling Report

Broadhead Skink

Eumeces laticeps

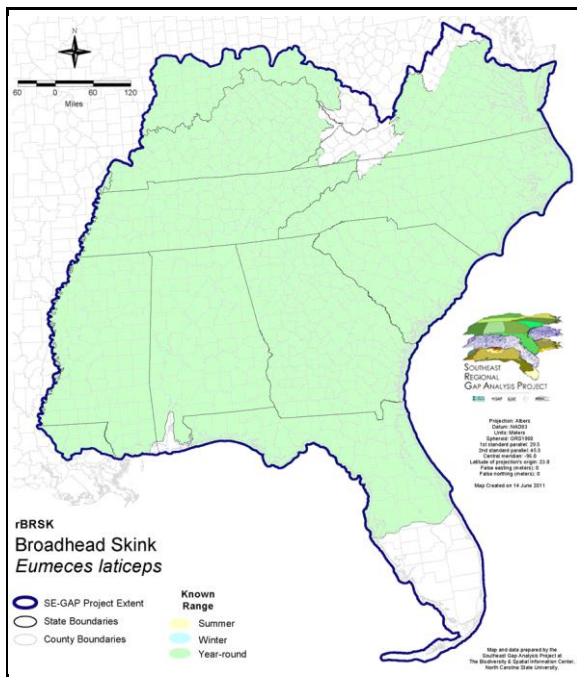
Taxa: Reptilian
 Order: Squamata
 Family: Scincidae

SE-GAP Spp Code: **rBRSK**

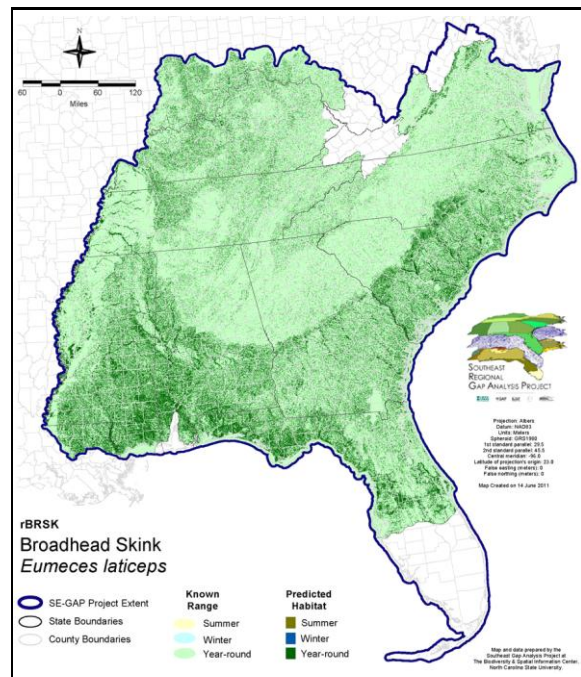
ITIS Species Code: 173961

NatureServe Element Code: ARACH01080

KNOWN RANGE:



PREDICTED HABITAT:



Range Map Link: http://www.basic.ncsu.edu/segap/datazip/maps/SE_Range_rBRSK.pdf

Predicted Habitat Map Link: http://www.basic.ncsu.edu/segap/datazip/maps/SE_Dist_rBRSK.pdf

GAP Online Tool Link: <http://www.gapservice.ncsu.edu/segap/segap/index2.php?species=rBRSK>

Data Download: http://www.basic.ncsu.edu/segap/datazip/region/vert/rBRSK_se00.zip

PROTECTION STATUS:

Reported on March 14, 2011

Federal Status: ---

State Status: KS (T), KY (N), MS (Non-game species in need of management), PA (PC)

NS Global Rank: G5

NS State Rank: AL (S5), AR (S5), DC (S1), DE (SH), FL (SNR), GA (S5), IL (S5), IN (S4), KS (S2), KY (S4), LA (S5), MD (S4), MO (S5), MS (S5), NC (S5), OH (SNR), OK (S3), PA (S1), SC (SNR), TN (S5), TX (S5), VA (S5), WV (S2)

SUMMARY OF PREDICTED HABITAT BY MANAGMENT AND GAP PROTECTION STATUS:

	US FWS		US Forest Service		Tenn. Valley Author.		US DOD/ACOE	
	ha	%	ha	%	ha	%	ha	%
Status 1	63,664.3	< 1	9,562.8	< 1	0.0	0	0.0	0
Status 2	134,013.8	< 1	100,561.3	< 1	0.0	0	2,200.8	< 1
Status 3	1,782.2	< 1	1,004,054.9	4	15,207.8	< 1	393,447.6	2
Status 4	25.7	< 1	< 0.1	< 1	0.0	0	0.2	< 1
Total	199,485.9	< 1	1,114,179.1	5	15,207.8	< 1	395,648.6	2
	US Dept. of Energy		US Nat. Park Service		NOAA		Other Federal Lands	
	ha	%	ha	%	ha	%	ha	%
Status 1	0.0	0	76,424.0	< 1	63.5	< 1	12,358.7	< 1
Status 2	0.0	0	11,581.6	< 1	4,614.9	< 1	44.5	< 1
Status 3	49,027.6	< 1	31,142.9	< 1	0.0	0	3,438.9	< 1
Status 4	0.0	0	1.0	6	0.0	0	0.0	0
Total	49,027.6	< 1	119,149.9	< 1	4,678.5	< 1	15,842.1	< 1
	Native Am. Reserv.		State Park/Hist. Park		State WMA/Gameland		State Forest	
	ha	%	ha	%	ha	%	ha	%
Status 1	0.0	0	480.4	< 1	48.1	< 1	0.0	0
Status 2	0.0	0	3,908.3	< 1	337,684.1	1	189.5	< 1
Status 3	7,668.9	< 1	298,442.8	1	114,601.4	< 1	220,936.1	< 1
Status 4	0.0	0	< 0.1	< 1	42,183.2	< 1	38.7	< 1
Total	7,668.9	< 1	302,831.6	1	494,516.7	2	221,164.4	< 1
	State Coastal Reserve		ST Nat.Area/Preserve		Other State Lands		Private Cons. Easemt.	
	ha	%	ha	%	ha	%	ha	%
Status 1	0.0	0	5,144.2	< 1	0.0	0	0.0	0
Status 2	7,892.0	< 1	47,695.6	< 1	4.2	< 1	1,273.9	< 1
Status 3	0.0	0	17,312.5	< 1	10,781.0	< 1	66,517.4	< 1
Status 4	0.0	0	0.6	< 1	1,163.5	< 1	0.0	0
Total	7,892.0	< 1	70,152.9	< 1	11,948.8	< 1	67,791.2	< 1
	Private Land - No Res.		Water		Overall Total			
	ha	%	ha	%	ha	%		
Status 1	0.0	0	0.0	0	167,746.0	< 1		
Status 2	0.0	0	0.0	7	651,664.5	3		
Status 3	474.8	< 1	1.0	< 1	2,234,837.9	13		
Status 4	20,249,086.0	83	32,881.3	< 1	20,367,538.4	83		
Total	20,249,560.8	83	32,882.5	< 1	23,421,786.8	100		

GAP Status 1: An area having permanent protection from conversion of natural land cover and a mandated management plan in operation to maintain a natural state within which disturbance events (of natural type, frequency, and intensity) are allowed to proceed without interference or are mimicked through management.

GAP Status 2: An area having permanent protection from conversion of natural land cover and a mandated management plan in operation to maintain a primarily natural state, but which may receive use or management practices that degrade the quality of existing natural communities.

GAP Status 3: An area having permanent protection from conversion of natural land cover for the majority of the area, but subject to extractive uses of either a broad, low-intensity type or localized intense type. It also confers protection to federally listed endangered and threatened species throughout the area.

GAP Status 4: Lack of irrevocable easement or mandate to prevent conversion of natural habitat types to anthropogenic habitat types. Allows for intensive use throughout the tract. Also includes those tracts for which the existence of such restrictions or sufficient information to establish a higher status is unknown.

PREDICTED HABITAT MODEL(S):

Year-round Model:

Habitat Description: Most abundant in moist woodlands with large, woody debris. Is arboreal, preferring standing, dead trees such as live oak, water oak, and cypress (Wilson 1995). In Florida, Bartlett and Bartlett (1999) state that this species is common in parks, backyards, university campuses, and other open, human altered habitats. M. Rubino, 10mar05.

Selected Map Units:

Functional Group	Map Unit Name
Forest/Woodland	Appalachian Hemlock-Hardwood Forest
Forest/Woodland	Atlantic Coastal Plain Central Maritime Forest
Forest/Woodland	Atlantic Coastal Plain Fall-Line Sandhills Longleaf Pine Woodland - Loblolly Modifier
Forest/Woodland	Atlantic Coastal Plain Fall-line Sandhills Longleaf Pine Woodland - Open Understory Modifier
Forest/Woodland	Atlantic Coastal Plain Fall-line Sandhills Longleaf Pine Woodland - Scrub/Shrub Understory Modifier
Forest/Woodland	Atlantic Coastal Plain Northern Maritime Forest
Forest/Woodland	Atlantic Coastal Plain Northern Mixed Oak-Heath Forest
Forest/Woodland	Atlantic Coastal Plain Southern Maritime Forest
Forest/Woodland	Atlantic Coastal Plain Upland Longleaf Pine Woodland
Forest/Woodland	Central Appalachian Oak and Pine Forest
Forest/Woodland	East Gulf Coastal Plain Interior Shortleaf Pine-Oak Forest - Mixed Modifier
Forest/Woodland	East Gulf Coastal Plain Interior Upland Longleaf Pine Woodland - Loblolly Modifier
Forest/Woodland	East Gulf Coastal Plain Interior Upland Longleaf Pine Woodland - Open Understory Modifier
Forest/Woodland	East Gulf Coastal Plain Interior Upland Longleaf Pine Woodland - Scrub/Shrub Modifier
Forest/Woodland	East Gulf Coastal Plain Maritime Forest
Forest/Woodland	Florida Longleaf Pine Sandhill - Open Understory Modifier
Forest/Woodland	Florida Longleaf Pine Sandhill - Scrub/Shrub Understory Modifier
Forest/Woodland	Mississippi Delta Maritime Forest
Forest/Woodland	Northeastern Interior Dry Oak Forest - Mixed Modifier
Forest/Woodland	South-Central Interior Mesophytic Forest
Forest/Woodland	Southeast Florida Coastal Strand and Maritime Hammock
Forest/Woodland	Southeastern Interior Longleaf Pine Woodland
Forest/Woodland	Southern and Central Appalachian Cove Forest
Forest/Woodland	Southern Piedmont Dry Oak-(Pine) Forest - Mixed Modifier
Forest/Woodland	Southern Piedmont Dry Oak-Heath Forest - Mixed Modifier
Forest/Woodland	Southern Piedmont Dry Oak-Heath Forest - Virginia/Pitch Pine Modifier
Forest/Woodland	Southwest Florida Coastal Strand and Maritime Hammock
Wetlands	Atlantic Coastal Plain Blackwater Stream Floodplain Forest - Forest Modifier
Wetlands	Atlantic Coastal Plain Brownwater Stream Floodplain Forest
Wetlands	Atlantic Coastal Plain Nonriverine Swamp and Wet Hardwood Forest - Taxodium/Nyssa Modifier
Wetlands	Atlantic Coastal Plain Northern Wet Longleaf Pine Savanna and Flatwoods
Wetlands	Atlantic Coastal Plain Small Blackwater River Floodplain Forest
Wetlands	Atlantic Coastal Plain Small Brownwater River Floodplain Forest
Wetlands	Atlantic Coastal Plain Southern Wet Pine Savanna and Flatwoods
Wetlands	Central Appalachian Floodplain - Forest Modifier
Wetlands	Central Appalachian Riparian - Forest Modifier
Wetlands	Central Florida Pine Flatwoods
Wetlands	East Gulf Coastal Plain Jackson Plain Dry Flatwoods - Scrub/Shrub Understory Modifier
Wetlands	East Gulf Coastal Plain Large River Floodplain Forest - Forest Modifier
Wetlands	East Gulf Coastal Plain Large River Floodplain Forest - Herbaceous Modifier
Wetlands	East Gulf Coastal Plain Near-Coast Pine Flatwoods - Offsite Hardwood Modifier
Wetlands	East Gulf Coastal Plain Near-Coast Pine Flatwoods - Open Understory Modifier
Wetlands	East Gulf Coastal Plain Near-Coast Pine Flatwoods - Scrub/Shrub Understory Modifier
Wetlands	East Gulf Coastal Plain Small Stream and River Floodplain Forest
Wetlands	East Gulf Coastal Plain Southern Loblolly-Hardwood Flatwoods

Wetlands	East Gulf Coastal Plain Treeless Savanna and Wet Prairie
Wetlands	Lower Mississippi River Bottomland and Floodplain Forest
Wetlands	Lower Mississippi River Bottomland Depressions - Forest Modifier
Wetlands	Lower Mississippi River Bottomland Depressions - Herbaceous Modifier
Wetlands	Mississippi River Low Floodplain (Bottomland) Forest
Wetlands	Mississippi River Riparian Forest
Wetlands	South Florida Cypress Dome
Wetlands	South Florida Dwarf Cypress Savanna
Wetlands	South Florida Hardwood Hammock
Wetlands	South Florida Pine Flatwoods
Wetlands	South Florida Wet Marl Prairie
Wetlands	South-Central Interior Large Floodplain - Forest Modifier
Wetlands	South-Central Interior Small Stream and Riparian
Wetlands	South-Central Interior/Upper Coastal Plain Wet Flatwoods
Wetlands	Southern Coastal Plain Blackwater River Floodplain Forest
Wetlands	Southern Coastal Plain Hydric Hammock
Wetlands	Southern Coastal Plain Nonriverine Cypress Dome
Wetlands	Southern Piedmont Large Floodplain Forest - Forest Modifier
Wetlands	Southern Piedmont Small Floodplain and Riparian Forest

- CITATIONS:** Ashton, R. E., Jr., and P. S. Ashton. 1991. Handbook of reptiles and amphibians of Florida. Part two. Lizards, turtles & crocodilians. Revised second edition. Windward Pub., Inc., Miami. 191 pp.
- Bartlett, R.D. and P.P. Bartlett. 1999. Field guide to Florida reptiles and amphibians. Gulf Publishing Co, Houston, TX. 280 p.
- Behler, J. L., and F. W. King. 1979. The Audubon Society field guide to North American reptiles and amphibians. Alfred A. Knopf, New York. 719 pp.
- Conant, R. 1975. A Field Guide to Reptiles and Amphibians of Eastern and Central North America. Second Edition. Houghton Mifflin Company, Boston, Massachusetts. xvii + 429 pp.
- Cooper, W. E. 1993. Tree selection by the broad-headed skink, EUMECES LATICEPS: size, holes, cover. *Amphibia-Reptilia* 14:285-294.
- Cooper, W. E., Jr. 1988. EUMECES LATICEPS. *Cat. Am. Amph.Rep.* 445:1-3.
- Cooper, W. E., Jr., and L. J. Vitt. 1994. Tree and substrate selection in the semi-arboreal scincid lizard EUMECES LATICEPS. *Herpetological Journal* 4:20-23.
- Fitch, H. S. 1970. Reproductive cycles of lizards and snakes. *Univ. Kansas Museum Natural History Miscellaneous Publication* 52:1-247.
- Green, N. B., and T. K. Pauley. 1987. Amphibians and reptiles in West Virginia. University of Pittsburg Press, Pittsburg, Pennsylvania. xi + 241 pp.
- Minton, S. A., Jr. 1972. Amphibians and reptiles of Indiana. *Indiana Academy Science Monographs* 3. v + 346 pp.
- Mitchell, J. C. 1994. The reptiles of Virginia. Washington, DC: Smithsonian Institution Press.
- Mount, R. H. 1975. The Reptiles and Amphibians of Alabama. Auburn University Agricultural Experiment Station, Auburn, Alabama. vii + 347 pp.
- Murphy, R. W., W. E. Cooper, Jr., and W. S. Richardson. 1983. Phylogenetic relationships of the North American five-lined skinks, genus EUMECES (Sauria:Scincidae). *Herpetologica* 39:200-211.
- Palmer, W. M., and A. L. Braswell. 1995. Reptiles of North Carolina. North Carolina State Museum of Natural Sciences, University of North Carolina Press, Chapel Hill, North Carolina.
- Vitt, L. J., and W. E. Cooper, Jr. 1985. The relationship between reproduction and lipid cycling in the skink EUMECES LATICEPS with comments on brooding ecology. *Herpetologica* 41:419-432.
- Vitt, L. J., and W. E. Cooper, Jr. 1986. Foraging and diet of a diurnal predator (EUMECES LATICEPS) feeding on hidden prey. *J. Herpetol.* 20:408-415.
- Wilson, L. A. 1995. The Land Manager's Guide to the amphibians and reptiles of the South. Chapel Hill, NC: The Nature Conservancy.