



# SOUTHEAST GAP ANALYSIS PROJECT



## Species Modeling Report

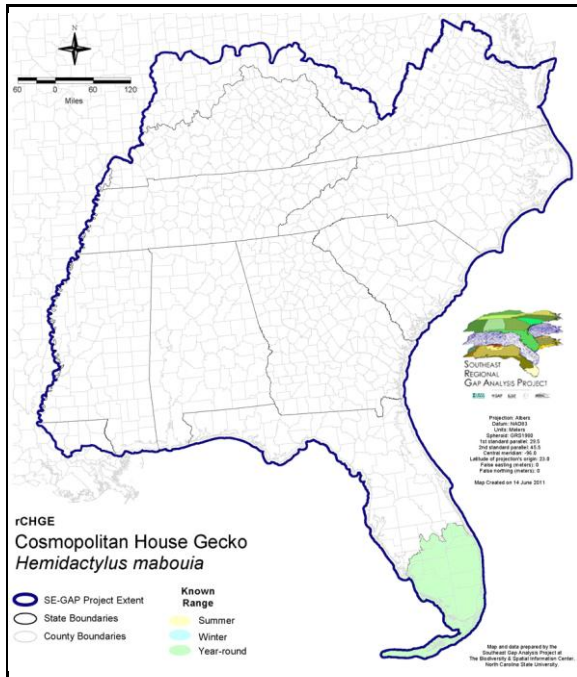
### Cosmopolitan House Gecko

*Hemidactylus mabouia*

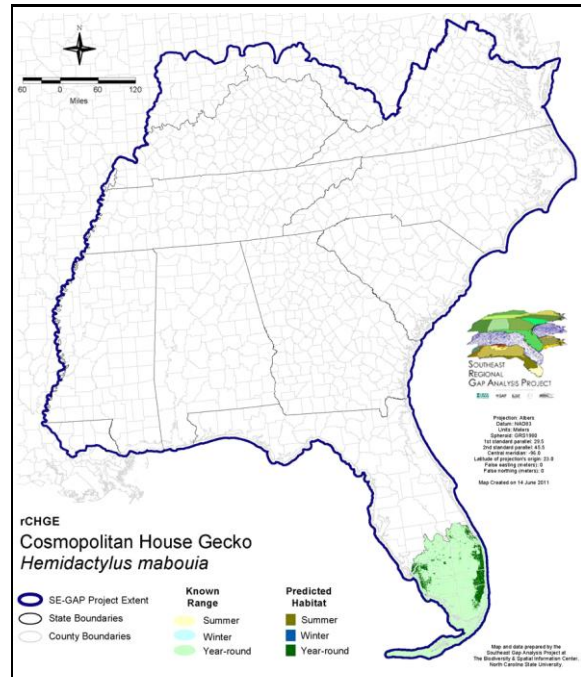
Taxa: Reptilian  
 Order: Squamata  
 Family: Gekkonidae

SE-GAP Spp Code: **rCHGE**  
 ITIS Species Code: 174058  
 NatureServe Element Code: ARACD03050

#### KNOWN RANGE:



#### PREDICTED HABITAT:



Range Map Link: [http://www.basic.ncsu.edu/segap/datazip/maps/SE\\_Range\\_rCHGE.pdf](http://www.basic.ncsu.edu/segap/datazip/maps/SE_Range_rCHGE.pdf)

Predicted Habitat Map Link: [http://www.basic.ncsu.edu/segap/datazip/maps/SE\\_Dist\\_rCHGE.pdf](http://www.basic.ncsu.edu/segap/datazip/maps/SE_Dist_rCHGE.pdf)

GAP Online Tool Link: <http://www.gapservice.ncsu.edu/segap/segap/index2.php?species=rCHGE>

Data Download: [http://www.basic.ncsu.edu/segap/datazip/region/vert/rCHGE\\_se00.zip](http://www.basic.ncsu.edu/segap/datazip/region/vert/rCHGE_se00.zip)

#### PROTECTION STATUS:

Reported on March 14, 2011

Federal Status: ---  
 State Status: ---  
 NS Global Rank: G5  
 NS State Rank: FL (SNA)

**SUMMARY OF PREDICTED HABITAT BY MANAGMENT AND GAP PROTECTION STATUS:**

	US FWS		US Forest Service		Tenn. Valley Author.		US DOD/ACOE	
	ha	%	ha	%	ha	%	ha	%
Status 1	229.1	< 1	0.0	0	0.0	0	0.0	0
Status 2	0.0	0	0.0	0	0.0	0	0.0	0
Status 3	0.0	0	0.0	0	0.0	0	1,625.4	< 1
Status 4	0.0	0	0.0	0	0.0	0	0.0	0
Total	229.1	< 1	0.0	0	0.0	0	1,625.4	< 1
	US Dept. of Energy		US Nat. Park Service		NOAA		Other Federal Lands	
	ha	%	ha	%	ha	%	ha	%
Status 1	0.0	0	728.1	< 1	0.0	0	0.0	0
Status 2	0.0	0	0.0	0	406.8	< 1	25.8	< 1
Status 3	0.0	0	1,536.1	< 1	0.0	0	0.0	0
Status 4	0.0	0	0.0	0	0.0	0	0.0	0
Total	0.0	0	2,264.2	< 1	406.8	< 1	25.8	< 1
	Native Am. Reserv.		State Park/Hist. Park		State WMA/Gameland		State Forest	
	ha	%	ha	%	ha	%	ha	%
Status 1	0.0	0	0.0	0	0.0	0	0.0	0
Status 2	0.0	0	0.0	0	1,262.3	< 1	0.0	0
Status 3	0.0	0	3,511.1	< 1	0.0	0	609.4	< 1
Status 4	0.0	0	0.0	0	0.0	0	0.0	0
Total	0.0	0	3,511.1	< 1	1,262.3	< 1	609.4	< 1
	State Coastal Reserve		ST Nat.Area/Preserve		Other State Lands		Private Cons. Easemt.	
	ha	%	ha	%	ha	%	ha	%
Status 1	0.0	0	0.0	0	0.0	0	0.0	0
Status 2	0.0	0	0.0	0	0.0	0	0.0	0
Status 3	0.0	0	47.5	< 1	0.0	0	374.4	< 1
Status 4	0.0	0	0.0	0	0.0	0	0.0	0
Total	0.0	0	47.5	< 1	0.0	0	374.4	< 1
	Private Land - No Res.		Water		Overall Total			
	ha	%	ha	%	ha	%		
Status 1	0.0	0	0.0	0	957.2	< 1		
Status 2	0.0	0	0.0	0	1,694.9	< 1		
Status 3	0.0	0	0.0	0	7,703.9	1		
Status 4	507,398.9	97	2,914.3	< 1	510,313.2	98		
Total	507,398.9	97	2,914.3	< 1	520,669.3	100		

GAP Status 1: An area having permanent protection from conversion of natural land cover and a mandated management plan in operation to maintain a natural state within which disturbance events (of natural type, frequency, and intensity) are allowed to proceed without interference or are mimicked through management.

GAP Status 2: An area having permanent protection from conversion of natural land cover and a mandated management plan in operation to maintain a primarily natural state, but which may receive use or management practices that degrade the quality of existing natural communities.

GAP Status 3: An area having permanent protection from conversion of natural land cover for the majority of the area, but subject to extractive uses of either a broad, low-intensity type or localized intense type. It also confers protection to federally listed endangered and threatened species throughout the area.

GAP Status 4: Lack of irrevocable easement or mandate to prevent conversion of natural habitat types to anthropogenic habitat types. Allows for intensive use throughout the tract. Also includes those tracts for which the existence of such restrictions or sufficient information to establish a higher status is unknown.

## PREDICTED HABITAT MODEL(S):

### Year-round Model:

Habitat Description: Associated with buildings, piles of debris, or rocks, logs, and other objects on the ground; also found under the bark of dead trees. M. Rubino, 25Jan05.

#### Selected Map Units:

Functional Group	Map Unit Name
Anthropogenic	Bare Sand
Anthropogenic	Bare Soil
Anthropogenic	Developed Open Space
Anthropogenic	High Intensity Developed
Anthropogenic	Low Intensity Developed
Anthropogenic	Medium Intensity Developed

### CITATIONS:

For more information:: SE-GAP Analysis Project / BaSIC  
127 David Clark Labs  
Dept. of Biology, NCSU  
Raleigh, NC 27695-7617  
(919) 513-2853  
[www.basic.ncsu.edu/segap](http://www.basic.ncsu.edu/segap)

Compiled: 15 September 2011

This data was compiled and/or developed  
by the Southeast GAP Analysis Project at  
The Biodiversity and Spatial Information  
Center, North Carolina State University.