



SOUTHEAST GAP ANALYSIS PROJECT



Species Modeling Report

Coachwhip

Masticophis flagellum

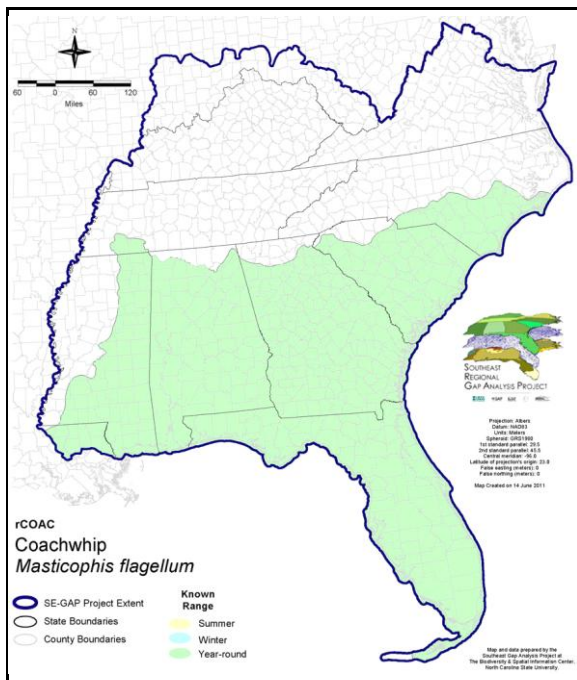
Taxa: Reptilian
 Order: Squamata
 Family: Colubridae

SE-GAP Spp Code: **rCOAC**

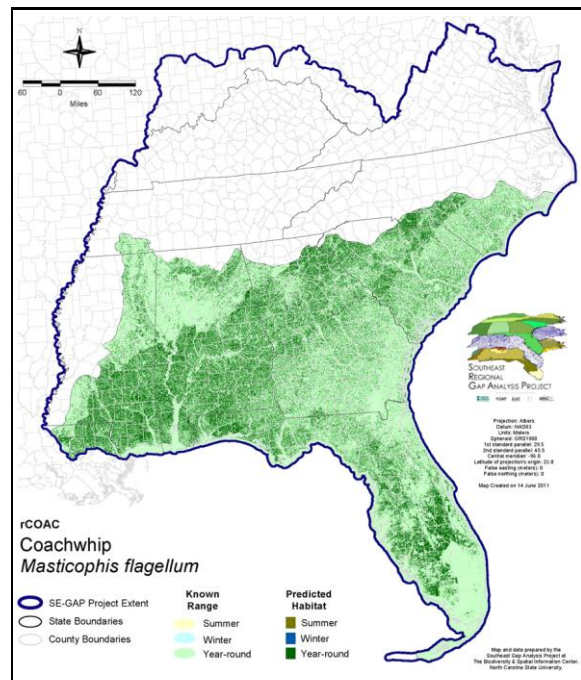
ITIS Species Code: 174238

NatureServe Element Code: ARADB21020

KNOWN RANGE:



PREDICTED HABITAT:



Range Map Link: http://www.basic.ncsu.edu/segap/datazip/maps/SE_Range_rCOAC.pdf

Predicted Habitat Map Link: http://www.basic.ncsu.edu/segap/datazip/maps/SE_Dist_rCOAC.pdf

GAP Online Tool Link: <http://www.gapservice.ncsu.edu/segap/segap/index2.php?species=rCOAC>

Data Download: http://www.basic.ncsu.edu/segap/datazip/region/vert/rCOAC_se00.zip

PROTECTION STATUS:

Reported on March 14, 2011

Federal Status: ---

State Status: AL (SP), IL (LE), KY (N), MS (Non-game species in need of management), NC (SR), NE (NC), UT (None)

NS Global Rank: G5

NS State Rank: AL (S3), AR (S5), AZ (S5), CA (S5), CO (S5), FL (SNR), GA (S5), IL (S1), KS (S5), KY (SX), LA (S5), MO (SNR), MS (S3S4), NC (S3), NE (S3), NM (S5), NV (S5), OK (S5), SC (SNR), TN (S2S3), TX (S5), UT (S1S2)

SUMMARY OF PREDICTED HABITAT BY MANAGMENT AND GAP PROTECTION STATUS:

	US FWS		US Forest Service		Tenn. Valley Author.		US DOD/ACOE	
	ha	%	ha	%	ha	%	ha	%
Status 1	27,976.7	< 1	889.7	< 1	0.0	0	0.0	0
Status 2	29,180.7	< 1	29,196.5	< 1	0.0	0	28.4	< 1
Status 3	0.0	0	547,989.4	3	765.9	< 1	308,295.5	2
Status 4	0.2	< 1	0.0	0	0.0	0	0.0	0
Total	57,157.6	< 1	578,075.6	3	765.9	< 1	308,324.0	2
	US Dept. of Energy		US Nat. Park Service		NOAA		Other Federal Lands	
	ha	%	ha	%	ha	%	ha	%
Status 1	0.0	0	6,997.7	< 1	61.5	< 1	7,048.5	< 1
Status 2	0.0	0	6,738.8	< 1	3,716.5	< 1	42.9	< 1
Status 3	32,140.9	< 1	58,272.8	< 1	0.0	0	2,363.0	< 1
Status 4	0.0	0	1.0	8	0.0	0	0.0	0
Total	32,140.9	< 1	72,010.9	< 1	3,777.9	< 1	9,454.5	< 1
	Native Am. Reserv.		State Park/Hist. Park		State WMA/Gameland		State Forest	
	ha	%	ha	%	ha	%	ha	%
Status 1	0.0	0	264.5	< 1	0.0	0	0.0	0
Status 2	0.0	0	465.9	< 1	133,741.9	< 1	0.0	0
Status 3	877.2	< 1	225,498.2	1	32,306.8	< 1	181,102.0	< 1
Status 4	0.0	0	0.0	0	27,834.3	< 1	36.0	< 1
Total	877.2	< 1	226,228.6	1	193,883.0	1	181,138.0	< 1
	State Coastal Reserve		ST Nat.Area/Preserve		Other State Lands		Private Cons. Easemt.	
	ha	%	ha	%	ha	%	ha	%
Status 1	0.0	0	2,045.8	< 1	0.0	0	0.0	0
Status 2	1,592.4	< 1	9,870.3	< 1	0.0	0	1,253.3	< 1
Status 3	0.0	0	9,856.5	< 1	6,909.0	< 1	64,359.7	< 1
Status 4	0.0	0	0.0	0	1,664.3	< 1	< 0.1	< 1
Total	1,592.4	< 1	21,772.6	< 1	8,573.3	< 1	65,613.2	< 1
	Private Land - No Res.		Water		Overall Total			
	ha	%	ha	%	ha	%		
Status 1	0.0	0	0.0	0	45,284.3	< 1		
Status 2	0.0	0	0.0	9	215,827.9	1		
Status 3	50.6	< 1	1.0	< 1	1,470,788.6	11		
Status 4	16,621,532.6	88	3,346.7	< 1	16,682,249.8	88		
Total	16,621,583.1	88	3,347.9	< 1	18,414,150.6	100		

GAP Status 1: An area having permanent protection from conversion of natural land cover and a mandated management plan in operation to maintain a natural state within which disturbance events (of natural type, frequency, and intensity) are allowed to proceed without interference or are mimicked through management.

GAP Status 2: An area having permanent protection from conversion of natural land cover and a mandated management plan in operation to maintain a primarily natural state, but which may receive use or management practices that degrade the quality of existing natural communities.

GAP Status 3: An area having permanent protection from conversion of natural land cover for the majority of the area, but subject to extractive uses of either a broad, low-intensity type or localized intense type. It also confers protection to federally listed endangered and threatened species throughout the area.

GAP Status 4: Lack of irrevocable easement or mandate to prevent conversion of natural habitat types to anthropogenic habitat types. Allows for intensive use throughout the tract. Also includes those tracts for which the existence of such restrictions or sufficient information to establish a higher status is unknown.

PREDICTED HABITAT MODEL(S):

Year-round Model:

Habitat Description: Coachwhips may be observed in a variety of drier or open, grassy places. South of the Fall Line, they are typically associated with dry, sandy situations including areas of cut-over pines, flatwoods of pine or palmetto, maritime forest, and sandhill habitats of pine and scrub oak. In the Piedmont, they are usually found in drier forested or cutover areas.

Grassland, savannah, and scrub (Ernst and Barbour 1989). # Shortleaf pine, oak, hickory forest, and longleaf pine forest flatwoods. Dry uplands, often near cultivated areas (Dundee and Rossman 1989). # High pine, dry flatwoods, and rosemary scrub (Carr 1940). # Xeric habitats with open understories, including pine flatwoods, longleaf pine/turkey oak, and sand pine scrub (Ashton 1988). # Wide variety, pine and palmetto flatwoods, pine hills, open prairie, and oak woodlands (Wilson 1973). # High pine/turkey oak. Also, almost any well drained open country (Carr and Goin 1955). # Pine woods; not observed in Everglades proper, but on "pine islands" (Duellman and Schwartz 1958). # Common in coastal scrub (Fernald 1989). # In the Ordway, found in high pine sandhills, xeric oak hammocks, and old fields (Franz 1995). # In the Ordway, found in both mesic and xeric habitats, but preference for xeric (Dodd and Franz 1995).

Quoted Directly from State Hab notes: Amy Silvano 22Aug05

Ecosystem Classifiers: Evergreen Forests, Hardwood (woodland only), Maritime, Pasture, glades and Barrens, Flatwoods. Amy Silvano 22Aug05

Selected Map Units:

Functional Group	Map Unit Name
Anthropogenic	Pasture/Hay
Forest/Woodland	Alabama Ketona Glade and Woodland
Forest/Woodland	Appalachian Serpentine Woodland
Forest/Woodland	Appalachian Shale Barrens
Forest/Woodland	Atlantic Coastal Plain Central Maritime Forest
Forest/Woodland	Atlantic Coastal Plain Fall-Line Sandhills Longleaf Pine Woodland - Loblolly Modifier
Forest/Woodland	Atlantic Coastal Plain Fall-line Sandhills Longleaf Pine Woodland - Offsite Hardwood Modifier
Forest/Woodland	Atlantic Coastal Plain Fall-line Sandhills Longleaf Pine Woodland - Open Understory Modifier
Forest/Woodland	Atlantic Coastal Plain Fall-line Sandhills Longleaf Pine Woodland - Scrub/Shrub Understory Modifier
Forest/Woodland	Atlantic Coastal Plain Northern Maritime Forest
Forest/Woodland	Atlantic Coastal Plain Southern Maritime Forest
Forest/Woodland	Atlantic Coastal Plain Upland Longleaf Pine Woodland
Forest/Woodland	Central Appalachian Alkaline Glade and Woodland
Forest/Woodland	Central Appalachian Oak and Pine Forest
Forest/Woodland	Central Appalachian Pine-Oak Rocky Woodland
Forest/Woodland	Central Interior Highlands Calcareous Glade and Barrens
Forest/Woodland	Central Interior Highlands Dry Acidic Glade and Barrens
Forest/Woodland	Cumberland Sandstone Glade and Barrens
Forest/Woodland	East Gulf Coastal Plain Black Belt Calcareous Prairie and Woodland - Woodland Modifier
Forest/Woodland	East Gulf Coastal Plain Interior Upland Longleaf Pine Woodland - Loblolly Modifier
Forest/Woodland	East Gulf Coastal Plain Interior Upland Longleaf Pine Woodland - Offsite Hardwood Modifier
Forest/Woodland	East Gulf Coastal Plain Interior Upland Longleaf Pine Woodland - Open Understory Modifier
Forest/Woodland	East Gulf Coastal Plain Interior Upland Longleaf Pine Woodland - Scrub/Shrub Modifier
Forest/Woodland	East Gulf Coastal Plain Maritime Forest
Forest/Woodland	East Gulf Coastal Plain Northern Loess Plain Oak-Hickory Upland - Juniper Modifier
Forest/Woodland	Florida Longleaf Pine Sandhill - Open Understory Modifier
Forest/Woodland	Florida Longleaf Pine Sandhill - Scrub/Shrub Understory Modifier
Forest/Woodland	Mississippi Delta Maritime Forest
Forest/Woodland	Nashville Basin Limestone Glade
Forest/Woodland	Ridge and Valley Calcareous Valley Bottom Glade and Woodland
Forest/Woodland	South Florida Pine Rockland

Forest/Woodland	Southeast Florida Coastal Strand and Maritime Hammock
Forest/Woodland	Southeastern Interior Longleaf Pine Woodland
Forest/Woodland	Southern and Central Appalachian Mafic Glade and Barrens
Forest/Woodland	Southern Appalachian Montane Pine Forest and Woodland
Forest/Woodland	Southern Coastal Plain Oak Dome and Hammock
Forest/Woodland	Southern Piedmont Dry Oak-(Pine) Forest - Hardwood Modifier
Forest/Woodland	Southern Piedmont Dry Oak-(Pine) Forest - Loblolly Pine Modifier
Forest/Woodland	Southern Piedmont Dry Oak-Heath Forest - Virginia/Pitch Pine Modifier
Forest/Woodland	Southern Piedmont Glade and Barrens
Forest/Woodland	Southern Piedmont Mafic Hardpan Woodland
Forest/Woodland	Southwest Florida Coastal Strand and Maritime Hammock
Prairie	East Gulf Coastal Plain Black Belt Calcareous Prairie and Woodland
Prairie	East Gulf Coastal Plain Black Belt Calcareous Prairie and Woodland - Herbaceous Modifier
Prairie	East Gulf Coastal Plain Jackson Plain Prairie and Barrens
Prairie	East Gulf Coastal Plain Jackson Prairie and Woodland
Prairie	Florida Dry Prairie
Prairie	Panhandle Florida Limestone Glade
Prairie	Southern Ridge and Valley Patch Prairie
Wetlands	East Gulf Coastal Plain Jackson Plain Dry Flatwoods - Open Understory Modifier
Wetlands	East Gulf Coastal Plain Jackson Plain Dry Flatwoods - Scrub/Shrub Understory Modifier
Wetlands	East Gulf Coastal Plain Near-Coast Pine Flatwoods - Offsite Hardwood Modifier
Wetlands	East Gulf Coastal Plain Near-Coast Pine Flatwoods - Open Understory Modifier
Wetlands	East Gulf Coastal Plain Near-Coast Pine Flatwoods - Scrub/Shrub Understory Modifier
Wetlands	East Gulf Coastal Plain Southern Loblolly-Hardwood Flatwoods
Wetlands	South Florida Dwarf Cypress Savanna
Wetlands	South Florida Pine Flatwoods

- CITATIONS:** Ashton, R. E., Jr., and P. S. Ashton. 1988. Handbook of reptiles and amphibians of Florida. Part Three. The amphibians. Windward Publ. Co., Miami.
- Behler, J. L., and F. W. King. 1979. The Audubon Society field guide to North American reptiles and amphibians. Alfred A. Knopf, New York. 719 pp.
- Carr, A. F., Jr. 1940. A contribution to the herpetology of Florida. Univ. Florida Biol. Sci. Ser. 3:1.118.
- Carr, A. F., Jr., and C. J. Goin. 1955. A guide to the reptiles, amphibians and fresh-water fishes of Florida. Univ. Florida Press, Gainesville. 341pp.
- Dodd, C. K. Jr. and R. Franz. 1995. Seasonal abundance and habitat use of selected snakes trapped in xeric and mesic communities of north-central Florida. Bulletin of the Florida Museum of Natural History. 1995; 38(1-9):43-68.
- Duellman, W. E., and A. Schwartz. 1958. Amphibians and reptiles of southern Florida. Florida State Mus. Bull. Biol. Sci. 3:181-324.
- Dundee, H. A., and D. A. Rossman. 1989. The amphibians and reptiles of Louisiana. Louisiana State Univ. Press, Baton Rouge.
- Ernst, C. H., and R. W. Barbour. 1989. Snakes of eastern North America. George Mason Univ. Press, Fairfax, Virginia. 282 pp.
- Fernald, R. T. 1989. Coastal Xeric Scrub Communities of the Treasure Coast Region, Florida. Tallahassee, FL: Florida Game and Fresh Water Fish Commission.
- Franz, R. 1995. An introduction to the amphibians and reptiles of the Katherine Ordway Preserve-Swisher Memorial Sanctuary, Putnam County, Florida. Bulletin of the Florida Museum of Natural History. 38(1-9):1-10.
- Hammerson, G. A. 1982. Amphibians and reptiles in Colorado. Colorado Division of Wildlife, Denver. vii + 131 pp.
- Secor, S. M. 1995. Ecological aspects of foraging mode for the snakes CROTALUS CERASTES and MASTICOPHIS FLAGELLUM. Herpetological Monographs 9:169-186.
- Stebbins, R. C. 1985. A Field Guide to Western Reptiles and Amphibians. Second Edition. Houghton Mifflin Company, Boston, Massachusetts. xiv + 336 pp.
- Tennant, A. 1984. The Snakes of Texas. Texas Monthly Press, Austin, Texas. 561 pp.
- Wilson, L. D. 1973. Masticophis flagellum. Cat. Am. Amph.Rep. 145.1-145.4.

For more information:: SE-GAP Analysis Project / BaSIC
127 David Clark Labs
Dept. of Biology, NCSU
Raleigh, NC 27695-7617
(919) 513-2853
www.basic.ncsu.edu/segap

Compiled: 15 September 2011

This data was compiled and/or developed
by the Southeast GAP Analysis Project at
The Biodiversity and Spatial Information
Center, North Carolina State University.