



SOUTHEAST GAP ANALYSIS PROJECT



Species Modeling Report

Eastern Glass Lizard

Ophisaurus ventralis

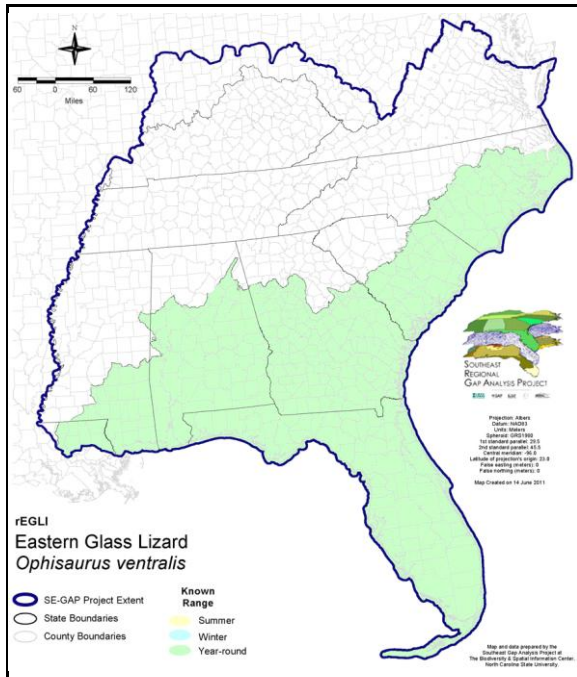
Taxa: Reptilian
 Order: Squamata
 Family: Anguillidae

SE-GAP Spp Code: **rEGLI**

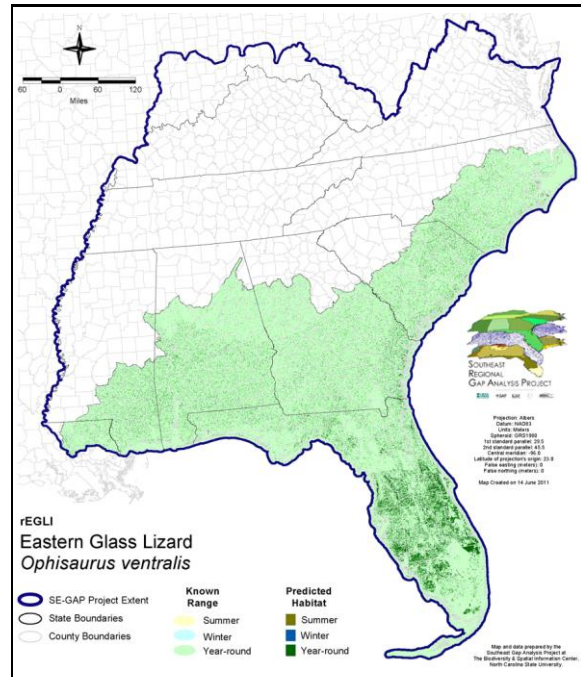
ITIS Species Code: 174110

NatureServe Element Code: ARACB02030

KNOWN RANGE:



PREDICTED HABITAT:



Range Map Link: http://www.basic.ncsu.edu/segap/datazip/maps/SE_Range_rEGLI.pdf

Predicted Habitat Map Link: http://www.basic.ncsu.edu/segap/datazip/maps/SE_Dist_rEGLI.pdf

GAP Online Tool Link: <http://www.gapservice.ncsu.edu/segap/segap/index2.php?species=rEGLI>

Data Download: http://www.basic.ncsu.edu/segap/datazip/region/vert/rEGLI_se00.zip

PROTECTION STATUS:

Reported on March 14, 2011

Federal Status: ---

State Status: MS (Non-game species in need of management), VA (LT)

NS Global Rank: G5

NS State Rank: AL (S5), FL (SNR), GA (S5), LA (S3), MS (S5), NC (S5), SC (SNR), VA (S1)

SUMMARY OF PREDICTED HABITAT BY MANAGMENT AND GAP PROTECTION STATUS:

	US FWS		US Forest Service		Tenn. Valley Author.		US DOD/ACOE	
	ha	%	ha	%	ha	%	ha	%
Status 1	14,798.6	< 1	326.3	< 1	0.0	0	0.0	0
Status 2	12,990.9	< 1	5,434.1	< 1	0.0	0	0.0	0
Status 3	0.8	< 1	83,344.4	1	0.0	0	87,508.3	2
Status 4	10.8	< 1	0.0	0	0.0	0	0.0	0
Total	27,801.1	< 1	89,104.8	2	0.0	0	87,508.3	2
	US Dept. of Energy		US Nat. Park Service		NOAA		Other Federal Lands	
	ha	%	ha	%	ha	%	ha	%
Status 1	0.0	0	21,011.8	< 1	95.9	< 1	8,877.7	< 1
Status 2	0.0	0	7,571.0	< 1	3,734.7	< 1	20.9	< 1
Status 3	6,077.8	< 1	29,546.5	< 1	0.0	0	401.9	< 1
Status 4	0.0	0	0.0	0	0.0	0	0.0	0
Total	6,077.8	< 1	58,129.2	1	3,830.6	< 1	9,300.4	< 1
	Native Am. Reserv.		State Park/Hist. Park		State WMA/Gameland		State Forest	
	ha	%	ha	%	ha	%	ha	%
Status 1	0.0	0	63.1	< 1	0.0	0	0.0	0
Status 2	0.0	0	130.1	< 1	156,184.0	3	0.0	0
Status 3	20.6	< 1	251,976.4	4	8,207.2	< 1	86,974.1	2
Status 4	0.0	0	0.0	0	4,890.4	< 1	6.9	< 1
Total	20.6	< 1	252,169.6	4	169,281.6	3	86,981.0	2
	State Coastal Reserve		ST Nat.Area/Preserve		Other State Lands		Private Cons. Easemt.	
	ha	%	ha	%	ha	%	ha	%
Status 1	0.0	0	345.2	< 1	0.0	0	0.0	0
Status 2	2,879.7	< 1	6,533.4	< 1	0.0	0	1,623.1	< 1
Status 3	0.0	0	12,014.8	< 1	4,619.3	< 1	50,011.3	< 1
Status 4	0.0	0	0.0	0	257.2	< 1	< 0.1	< 1
Total	2,879.7	< 1	18,893.3	< 1	4,876.5	< 1	51,634.4	< 1
	Private Land - No Res.		Water		Overall Total			
	ha	%	ha	%	ha	%	ha	%
Status 1	0.0	0	0.0	0	45,518.4 < 1			
Status 2	0.0	0	0.0	0	197,101.8 4			
Status 3	141.2	< 1	0.0	0	620,844.5 13			
Status 4	4,647,558.5	83	14,453.4	< 1	4,672,057.0 83			
Total	4,647,699.7	83	14,453.4	< 1	5,535,521.6 100			

GAP Status 1: An area having permanent protection from conversion of natural land cover and a mandated management plan in operation to maintain a natural state within which disturbance events (of natural type, frequency, and intensity) are allowed to proceed without interference or are mimicked through management.

GAP Status 2: An area having permanent protection from conversion of natural land cover and a mandated management plan in operation to maintain a primarily natural state, but which may receive use or management practices that degrade the quality of existing natural communities.

GAP Status 3: An area having permanent protection from conversion of natural land cover for the majority of the area, but subject to extractive uses of either a broad, low-intensity type or localized intense type. It also confers protection to federally listed endangered and threatened species throughout the area.

GAP Status 4: Lack of irrevocable easement or mandate to prevent conversion of natural habitat types to anthropogenic habitat types. Allows for intensive use throughout the tract. Also includes those tracts for which the existence of such restrictions or sufficient information to establish a higher status is unknown.

PREDICTED HABITAT MODEL(S):

Year-round Model:

Habitat Description: Occurs in a variety of habitats, but seem to prefer mesic situations near the margins of aquatic habitats. Occurs in mesic pine flatwoods, maritime forests, and moist hardwood forests. Also, damp grassy areas, open woods (mesic hammock, pine flatwoods; reported from tropical hammock in Florida by Schwartz and Henderson 1991); under debris in fields and vacant lots near ponds, marshes, and estuaries. Favors areas with sandy friable soils and abundant shelter on ground. Semifossorial. Eggs are laid under or at base of grass clumps (Ashton and Ashton 1985) or under debris on ground (Mount 1975). M. Rubino, 24Jan05.

Hydrography Mask:

- Utilizes flowing water features with buffer of 30m from selected water features.
- Utilizes open water features with buffer of 30m from selected water features.
- Utilizes wet vegetation features with buffers of 60m from and unlimited into selected vegetation features.

Selected Map Units:

Functional Group	Map Unit Name
Anthropogenic	Bare Sand
Anthropogenic	Developed Open Space
Anthropogenic	Low Intensity Developed
Anthropogenic	Pasture/Hay
Anthropogenic	Successional Grassland/Herbaceous
Anthropogenic	Successional Grassland/Herbaceous (Other)
Anthropogenic	Successional Grassland/Herbaceous (Utility Swath)
Coastal Dune & Freshwater Wetland	Atlantic Coastal Plain Southern Dune and Maritime Grassland
Coastal Dune & Freshwater Wetland	East Gulf Coastal Plain Dune and Coastal Grassland
Coastal Dune & Freshwater Wetland	Southwest Florida Dune and Coastal Grassland
Forest/Woodland	Atlantic Coastal Plain Central Maritime Forest
Forest/Woodland	Atlantic Coastal Plain Fall-Line Sandhills Longleaf Pine Woodland - Loblolly Modifier
Forest/Woodland	Atlantic Coastal Plain Fall-line Sandhills Longleaf Pine Woodland - Offsite Hardwood Modifier
Forest/Woodland	Atlantic Coastal Plain Fall-line Sandhills Longleaf Pine Woodland - Open Understory Modifier
Forest/Woodland	Atlantic Coastal Plain Fall-line Sandhills Longleaf Pine Woodland - Scrub/Shrub Understory Modifier
Forest/Woodland	Atlantic Coastal Plain Mesic Hardwood and Mixed Forest
Forest/Woodland	Atlantic Coastal Plain Southern Maritime Forest
Forest/Woodland	Atlantic Coastal Plain Upland Longleaf Pine Woodland
Forest/Woodland	East Gulf Coastal Plain Black Belt Calcareous Prairie and Woodland - Woodland Modifier
Forest/Woodland	East Gulf Coastal Plain Interior Shortleaf Pine-Oak Forest - Pine Modifier
Forest/Woodland	East Gulf Coastal Plain Interior Upland Longleaf Pine Woodland - Loblolly Modifier
Forest/Woodland	East Gulf Coastal Plain Interior Upland Longleaf Pine Woodland - Offsite Hardwood Modifier
Forest/Woodland	East Gulf Coastal Plain Interior Upland Longleaf Pine Woodland - Open Understory Modifier
Forest/Woodland	East Gulf Coastal Plain Interior Upland Longleaf Pine Woodland - Scrub/Shrub Modifier
Forest/Woodland	East Gulf Coastal Plain Maritime Forest
Forest/Woodland	East Gulf Coastal Plain Northern Mesic Hardwood Forest
Forest/Woodland	East Gulf Coastal Plain Southern Mesic Slope Forest
Forest/Woodland	Florida Longleaf Pine Sandhill - Open Understory Modifier
Forest/Woodland	Florida Longleaf Pine Sandhill - Scrub/Shrub Understory Modifier
Forest/Woodland	Florida Peninsula Inland Scrub
Forest/Woodland	Southeast Florida Coastal Strand and Maritime Hammock
Forest/Woodland	Southern Coastal Plain Oak Dome and Hammock
Forest/Woodland	Southern Piedmont Mesic Forest
Forest/Woodland	Southwest Florida Coastal Strand and Maritime Hammock
Prairie	East Gulf Coastal Plain Black Belt Calcareous Prairie and Woodland
Prairie	East Gulf Coastal Plain Black Belt Calcareous Prairie and Woodland - Herbaceous Modifier
Prairie	East Gulf Coastal Plain Jackson Plain Prairie and Barrens
Prairie	East Gulf Coastal Plain Jackson Prairie and Woodland
Wetlands	Atlantic Coastal Plain Northern Wet Longleaf Pine Savanna and Flatwoods

Wetlands	Atlantic Coastal Plain Sandhill Seep
Wetlands	Atlantic Coastal Plain Southern Wet Pine Savanna and Flatwoods
Wetlands	Atlantic Coastal Plain Streamhead Seepage Swamp, Pocosin, and Baygall
Wetlands	Central Florida Herbaceous Pondshore
Wetlands	Central Florida Herbaceous Seep
Wetlands	Central Florida Pine Flatwoods
Wetlands	East Gulf Coastal Plain Southern Depression Pondshore
Wetlands	East Gulf Coastal Plain Treeless Savanna and Wet Prairie
Wetlands	Floridian Highlands Freshwater Marsh
Wetlands	South Florida Freshwater Slough and Gator Hole
Wetlands	South Florida Hardwood Hammock
Wetlands	South Florida Pine Flatwoods
Wetlands	South Florida Wet Marl Prairie
Wetlands	South-Central Interior/Upper Coastal Plain Wet Flatwoods
Wetlands	Southern Coastal Plain Herbaceous Seepage Bog
Wetlands	Southern Coastal Plain Hydric Hammock
Wetlands	Southern Piedmont Seepage Wetland

CITATIONS: Ashton, R. E., Jr., and P. S. Ashton. 1985. Handbook of reptiles and amphibians of Florida. Part two. Lizards, turtles & crocodilians. Windward Pub., Inc., Miami. 191 pp.

Behler, J. L., and F. W. King. 1979. The Audubon Society field guide to North American reptiles and amphibians. Alfred A. Knopf, New York. 719 pp.

Holman, J. A. 1971. *Ophisaurus ventralis*. Cat. Am. Amph. Rep. 115.1-115.2.

Martof, B. S., W. M. Palmer, J. R. Bailey, and J. R. Harrison, III. 1980. Amphibians and reptiles of the Carolinas and Virginia. University of North Carolina Press, Chapel Hill, North Carolina. 264 pp.

McConkey, E. H. 1954. A systematic study of the North American lizards of the genus OPHISAURUS. Am. Midl. Nat. 51:133-169.

Mitchell, J. C. 1991. Amphibians and reptiles. Pages 411-76 in K. Terwilliger (coordinator). Virginia's Endangered Species: Proceedings of a Symposium. McDonald and Woodward Publishing Company, Blacksburg, Virginia.

Mitchell, J. C. 1994. The reptiles of Virginia. Washington, DC: Smithsonian Institution Press.

Mount, R. H. 1975. The Reptiles and Amphibians of Alabama. Auburn University Agricultural Experiment Station, Auburn, Alabama. vii + 347 pp.

Palmer, W. M., and A. L. Braswell. 1995. Reptiles of North Carolina. North Carolina State Museum of Natural Sciences, University of North Carolina Press, Chapel Hill, North Carolina.

Schwartz, A., and R. W. Henderson. 1991. Amphibians and Reptiles of the West Indies: Descriptions, Distributions, and Natural History. University of Florida Press, Gainesville, Florida. xvi + 720 pp.

For more information:: SE-GAP Analysis Project / BaSIC
 127 David Clark Labs
 Dept. of Biology, NCSU
 Raleigh, NC 27695-7617
 (919) 513-2853
www.basic.ncsu.edu/segap

Compiled: 15 September 2011

This data was compiled and/or developed by the Southeast GAP Analysis Project at The Biodiversity and Spatial Information Center, North Carolina State University.