



# SOUTHEAST GAP ANALYSIS PROJECT



## Species Modeling Report

### Florida Worm Lizard

*Rhineura floridana*

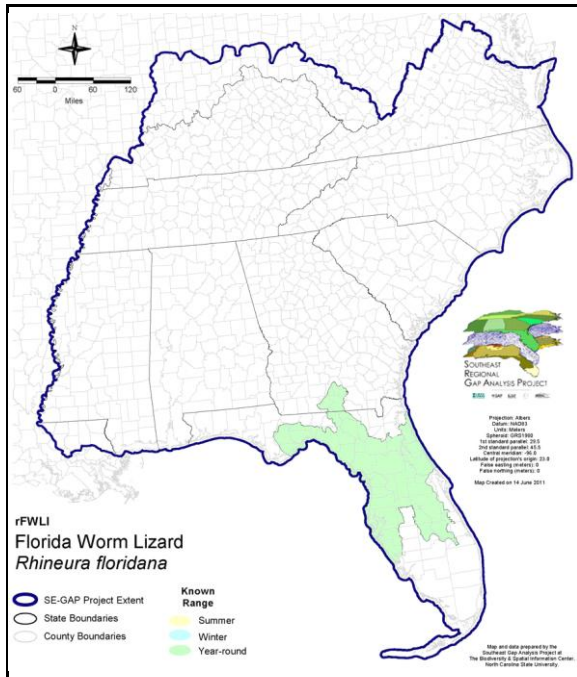
Taxa: Reptilian  
 Order: Squamata  
 Family: Rhineuridae

SE-GAP Spp Code: **rFWLI**

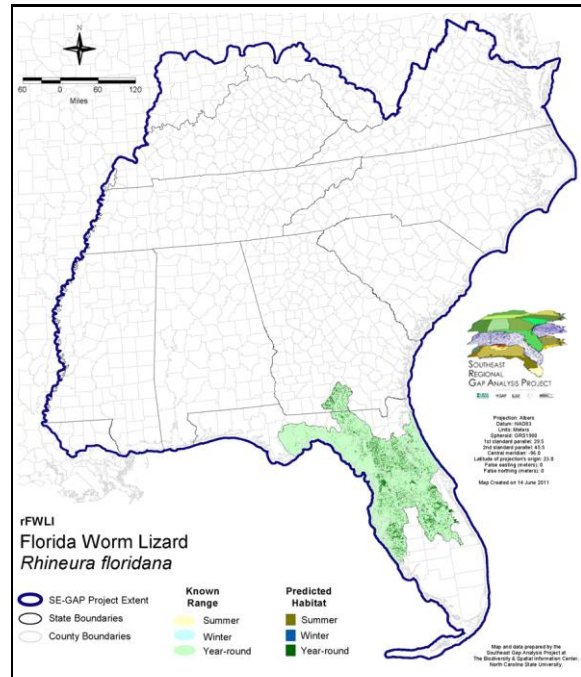
ITIS Species Code: 209635

NatureServe Element Code: ARACA01010

#### KNOWN RANGE:



#### PREDICTED HABITAT:



Range Map Link: [http://www.basic.ncsu.edu/segap/datazip/maps/SE\\_Range\\_rFWLI.pdf](http://www.basic.ncsu.edu/segap/datazip/maps/SE_Range_rFWLI.pdf)

Predicted Habitat Map Link: [http://www.basic.ncsu.edu/segap/datazip/maps/SE\\_Dist\\_rFWLI.pdf](http://www.basic.ncsu.edu/segap/datazip/maps/SE_Dist_rFWLI.pdf)

GAP Online Tool Link: <http://www.gapservice.ncsu.edu/segap/segap/index2.php?species=rFWLI>

Data Download: [http://www.basic.ncsu.edu/segap/datazip/region/vert/rFWLI\\_se00.zip](http://www.basic.ncsu.edu/segap/datazip/region/vert/rFWLI_se00.zip)

#### PROTECTION STATUS:

Reported on March 14, 2011

Federal Status: ---

State Status: ---

NS Global Rank: G4

NS State Rank: FL (SNR), GA (S1), IN (SNA)

**SUMMARY OF PREDICTED HABITAT BY MANAGMENT AND GAP PROTECTION STATUS:**

	US FWS		US Forest Service		Tenn. Valley Author.		US DOD/ACOE	
	ha	%	ha	%	ha	%	ha	%
Status 1	620.0	< 1	0.3	< 1	0.0	0	0.0	0
Status 2	369.7	< 1	3,649.4	< 1	0.0	0	0.0	0
Status 3	0.0	0	42,512.5	4	0.0	0	18,072.5	2
Status 4	0.0	0	0.0	0	0.0	0	0.0	0
Total	989.7	< 1	46,162.2	4	0.0	0	18,072.5	2
	US Dept. of Energy		US Nat. Park Service		NOAA		Other Federal Lands	
	ha	%	ha	%	ha	%	ha	%
Status 1	0.0	0	0.0	0	0.0	0	0.0	0
Status 2	0.0	0	17.5	< 1	207.9	< 1	0.0	0
Status 3	0.0	0	0.0	0	0.0	0	0.0	0
Status 4	0.0	0	0.0	0	0.0	0	0.0	0
Total	0.0	0	17.5	< 1	207.9	< 1	0.0	0
	Native Am. Reserv.		State Park/Hist. Park		State WMA/Gameland		State Forest	
	ha	%	ha	%	ha	%	ha	%
Status 1	0.0	0	0.0	0	0.0	0	0.0	0
Status 2	0.0	0	66.2	< 1	26,975.5	3	0.0	0
Status 3	0.0	0	72,048.9	7	72.5	< 1	41,759.3	4
Status 4	0.0	0	0.0	0	0.0	0	0.0	0
Total	0.0	0	72,115.0	7	27,048.0	3	41,759.3	4
	State Coastal Reserve		ST Nat.Area/Preserve		Other State Lands		Private Cons. Easemt.	
	ha	%	ha	%	ha	%	ha	%
Status 1	0.0	0	0.0	0	0.0	0	0.0	0
Status 2	0.0	0	361.9	< 1	0.0	0	728.5	< 1
Status 3	0.0	0	4,078.5	< 1	2,123.2	< 1	10,056.8	< 1
Status 4	0.0	0	0.0	0	131.3	< 1	0.0	0
Total	0.0	0	4,440.4	< 1	2,254.5	< 1	10,785.2	1
	Private Land - No Res.		Water		Overall Total			
	ha	%	ha	%	ha	%		
Status 1	0.0	0	0.0	0	620.3	< 1		
Status 2	0.0	0	0.0	0	32,376.5	3		
Status 3	< 0.1	< 1	0.0	0	190,724.1	22		
Status 4	789,684.9	75	1,457.6	< 1	791,273.9	75		
Total	789,685.0	75	1,457.6	< 1	1,014,994.8	100		

GAP Status 1: An area having permanent protection from conversion of natural land cover and a mandated management plan in operation to maintain a natural state within which disturbance events (of natural type, frequency, and intensity) are allowed to proceed without interference or are mimicked through management.

GAP Status 2: An area having permanent protection from conversion of natural land cover and a mandated management plan in operation to maintain a primarily natural state, but which may receive use or management practices that degrade the quality of existing natural communities.

GAP Status 3: An area having permanent protection from conversion of natural land cover for the majority of the area, but subject to extractive uses of either a broad, low-intensity type or localized intense type. It also confers protection to federally listed endangered and threatened species throughout the area.

GAP Status 4: Lack of irrevocable easement or mandate to prevent conversion of natural habitat types to anthropogenic habitat types. Allows for intensive use throughout the tract. Also includes those tracts for which the existence of such restrictions or sufficient information to establish a higher status is unknown.

## PREDICTED HABITAT MODEL(S):

### Year-round Model:

Habitat Description: A fossorial species preferring dry, sandy habitats, including upland and mesophytic hammocks and high pine habitats. M. Rubino, 21jan05.

#### Selected Map Units:

Functional Group	Map Unit Name
Anthropogenic	Bare Sand
Anthropogenic	Bare Soil
Anthropogenic	Row Crop
Coastal Dune & Freshwater Wetland	Atlantic Coastal Plain Southern Dune and Maritime Grassland
Coastal Dune & Freshwater Wetland	East Gulf Coastal Plain Dune and Coastal Grassland
Coastal Dune & Freshwater Wetland	Southwest Florida Dune and Coastal Grassland
Forest/Woodland	East Gulf Coastal Plain Interior Upland Longleaf Pine Woodland - Offsite Hardwood Modifier
Forest/Woodland	Florida Longleaf Pine Sandhill - Open Understory Modifier
Forest/Woodland	Florida Longleaf Pine Sandhill - Scrub/Shrub Understory Modifier
Forest/Woodland	Florida Peninsula Inland Scrub
Forest/Woodland	Southeast Florida Coastal Strand and Maritime Hammock
Forest/Woodland	Southern Coastal Plain Oak Dome and Hammock
Forest/Woodland	Southwest Florida Coastal Strand and Maritime Hammock
Wetlands	Central Florida Pine Flatwoods
Wetlands	South Florida Hardwood Hammock
Wetlands	South Florida Pine Flatwoods

### CITATIONS:

For more information:: SE-GAP Analysis Project / BaSIC  
127 David Clark Labs  
Dept. of Biology, NCSU  
Raleigh, NC 27695-7617  
(919) 513-2853  
[www.basic.ncsu.edu/segap](http://www.basic.ncsu.edu/segap)

Compiled: 15 September 2011

This data was compiled and/or developed  
by the Southeast GAP Analysis Project at  
The Biodiversity and Spatial Information  
Center, North Carolina State University.