



SOUTHEAST GAP ANALYSIS PROJECT



Species Modeling Report

Mole Skink

Eumeces egregius

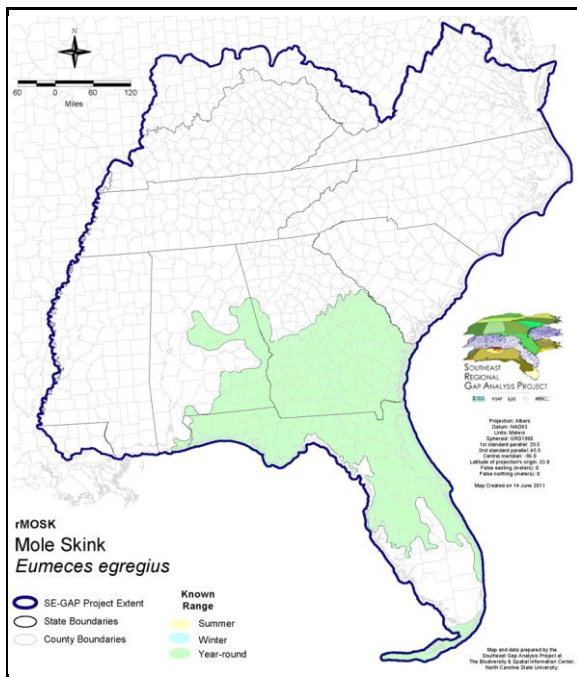
Taxa: Reptilian
Order: Squamata
Family: Scincidae

SE-GAP Spp Code: **rMOSK**

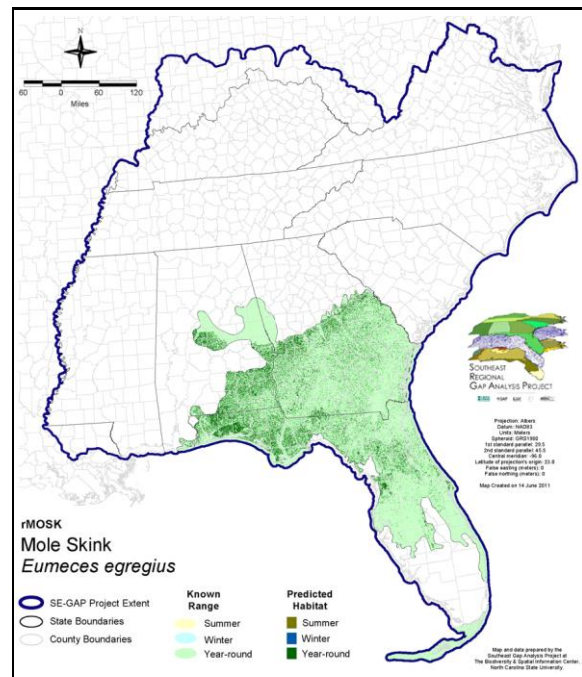
ITIS Species Code: 173965

NatureServe Element Code: ARACH01040

KNOWN RANGE:



PREDICTED HABITAT:



Range Map Link: http://www.basic.ncsu.edu/segap/datazip/maps/SE_Range_rMOSK.pdf

Predicted Habitat Map Link: http://www.basic.ncsu.edu/segap/datazip/maps/SE_Dist_rMOSK.pdf

GAP Online Tool Link: <http://www.gapservice.ncsu.edu/segap/segap/index2.php?species=rMOSK>

Data Download: http://www.basic.ncsu.edu/segap/datazip/region/vert/rMOSK_se00.zip

PROTECTION STATUS:

Reported on March 14, 2011

Federal Status: ---

State Status: ---

NS Global Rank: G5

NS State Rank: AL (S4), FL (S5), GA (S3)

SUMMARY OF PREDICTED HABITAT BY MANAGMENT AND GAP PROTECTION STATUS:

	US FWS		US Forest Service		Tenn. Valley Author.		US DOD/ACOE	
	ha	%	ha	%	ha	%	ha	%
Status 1	5,728.2	< 1	10.1	< 1	0.0	0	0.0	0
Status 2	6,825.2	< 1	11,690.0	< 1	0.0	0	20.3	< 1
Status 3	0.0	0	179,730.5	4	0.0	0	206,519.0	5
Status 4	0.2	< 1	0.0	0	0.0	0	0.0	0
Total	12,553.6	< 1	191,430.6	5	0.0	0	206,539.3	5
	US Dept. of Energy		US Nat. Park Service		NOAA		Other Federal Lands	
	ha	%	ha	%	ha	%	ha	%
Status 1	0.0	0	2,574.8	< 1	0.0	0	9,255.2	< 1
Status 2	0.0	0	7,792.7	< 1	1,445.1	< 1	39.9	< 1
Status 3	57.8	< 1	223.2	< 1	0.0	0	0.0	0
Status 4	0.0	0	0.0	0	0.0	0	0.0	0
Total	57.8	< 1	10,590.7	< 1	1,445.1	< 1	9,295.0	< 1
	Native Am. Reserv.		State Park/Hist. Park		State WMA/Gameland		State Forest	
	ha	%	ha	%	ha	%	ha	%
Status 1	0.0	0	0.0	0	0.0	0	0.0	0
Status 2	0.0	0	119.5	< 1	43,081.1	1	0.0	0
Status 3	0.0	0	66,503.2	2	1,325.9	< 1	118,957.0	3
Status 4	0.0	0	0.0	0	7,296.7	< 1	0.6	< 1
Total	0.0	0	66,622.7	2	51,703.7	1	118,957.6	3
	State Coastal Reserve		ST Nat.Area/Preserve		Other State Lands		Private Cons. Easemt.	
	ha	%	ha	%	ha	%	ha	%
Status 1	0.0	0	245.2	< 1	0.0	0	0.0	0
Status 2	151.6	< 1	3,202.6	< 1	0.0	0	445.8	< 1
Status 3	0.0	0	3,379.0	< 1	4,710.3	< 1	13,249.1	< 1
Status 4	0.0	0	0.0	0	115.6	< 1	0.0	0
Total	151.6	< 1	6,826.7	< 1	4,825.9	< 1	13,694.9	< 1
	Private Land - No Res.		Water		Overall Total			
	ha	%	ha	%	ha	%		
Status 1	0.0	0	0.0	0	17,813.4	< 1		
Status 2	0.0	0	0.0	0	74,813.6	2		
Status 3	49.1	< 1	1.0	< 1	594,705.1	18		
Status 4	3,362,138.6	79	1,427.4	< 1	3,378,275.6	80		
Total	3,362,187.8	79	1,428.4	< 1	4,065,607.6	100		

GAP Status 1: An area having permanent protection from conversion of natural land cover and a mandated management plan in operation to maintain a natural state within which disturbance events (of natural type, frequency, and intensity) are allowed to proceed without interference or are mimicked through management.

GAP Status 2: An area having permanent protection from conversion of natural land cover and a mandated management plan in operation to maintain a primarily natural state, but which may receive use or management practices that degrade the quality of existing natural communities.

GAP Status 3: An area having permanent protection from conversion of natural land cover for the majority of the area, but subject to extractive uses of either a broad, low-intensity type or localized intense type. It also confers protection to federally listed endangered and threatened species throughout the area.

GAP Status 4: Lack of irrevocable easement or mandate to prevent conversion of natural habitat types to anthropogenic habitat types. Allows for intensive use throughout the tract. Also includes those tracts for which the existence of such restrictions or sufficient information to establish a higher status is unknown.

PREDICTED HABITAT MODEL(S):

Year-round Model:

Habitat Description: Chiefly inhabits areas of sandy, well drained soils within sand pine scrub, sandhills, and dry hammocks (Wilson 1995). Also, longleaf pine-turkey oak woods and xeric hammocks, and amongst tidal wrack on beaches (NaturesServe). In Florida, may be plentiful on the beach side of tidal dunes near the base of shrubs (Bartlett and Bartlett 1999). M. Rubino, 9mar05.

Selected Map Units:

Functional Group	Map Unit Name
Beach	Atlantic Coastal Plain Northern Sandy Beach
Beach	Atlantic Coastal Plain Sea Island Beach
Beach	Atlantic Coastal Plain Southern Beach
Beach	Florida Panhandle Beach Vegetation
Beach	Southeast Florida Beach
Beach	Southwest Florida Beach
Coastal Dune & Freshwater Wetland	Atlantic Coastal Plain Southern Dune and Maritime Grassland
Coastal Dune & Freshwater Wetland	East Gulf Coastal Plain Dune and Coastal Grassland
Coastal Dune & Freshwater Wetland	Southwest Florida Dune and Coastal Grassland
Forest/Woodland	Atlantic Coastal Plain Fall-Line Sandhills Longleaf Pine Woodland - Loblolly Modifier
Forest/Woodland	Atlantic Coastal Plain Fall-line Sandhills Longleaf Pine Woodland - Offsite Hardwood Modifier
Forest/Woodland	Atlantic Coastal Plain Fall-line Sandhills Longleaf Pine Woodland - Open Understory Modifier
Forest/Woodland	Atlantic Coastal Plain Fall-line Sandhills Longleaf Pine Woodland - Scrub/Shrub Understory Modifier
Forest/Woodland	Atlantic Coastal Plain Southern Maritime Forest
Forest/Woodland	Atlantic Coastal Plain Upland Longleaf Pine Woodland
Forest/Woodland	East Gulf Coastal Plain Interior Upland Longleaf Pine Woodland - Loblolly Modifier
Forest/Woodland	East Gulf Coastal Plain Interior Upland Longleaf Pine Woodland - Offsite Hardwood Modifier
Forest/Woodland	East Gulf Coastal Plain Interior Upland Longleaf Pine Woodland - Open Understory Modifier
Forest/Woodland	East Gulf Coastal Plain Interior Upland Longleaf Pine Woodland - Scrub/Shrub Modifier
Forest/Woodland	East Gulf Coastal Plain Maritime Forest
Forest/Woodland	Florida Longleaf Pine Sandhill - Open Understory Modifier
Forest/Woodland	Florida Longleaf Pine Sandhill - Scrub/Shrub Understory Modifier
Forest/Woodland	Florida Peninsula Inland Scrub
Forest/Woodland	Mississippi Delta Maritime Forest
Forest/Woodland	Southeast Florida Coastal Strand and Maritime Hammock
Forest/Woodland	Southern Coastal Plain Oak Dome and Hammock
Forest/Woodland	Southwest Florida Coastal Strand and Maritime Hammock
Wetlands	Central Florida Pine Flatwoods
Wetlands	East Gulf Coastal Plain Near-Coast Pine Flatwoods - Offsite Hardwood Modifier
Wetlands	East Gulf Coastal Plain Near-Coast Pine Flatwoods - Open Understory Modifier
Wetlands	East Gulf Coastal Plain Near-Coast Pine Flatwoods - Scrub/Shrub Understory Modifier

CITATIONS:

For more information:: SE-GAP Analysis Project / BaSIC
127 David Clark Labs
Dept. of Biology, NCSU
Raleigh, NC 27695-7617
(919) 513-2853
www.basic.ncsu.edu/segap

Compiled: 15 September 2011

This data was compiled and/or developed
by the Southeast GAP Analysis Project at
The Biodiversity and Spatial Information
Center, North Carolina State University.