



SOUTHEAST GAP ANALYSIS PROJECT



Species Modeling Report

Pascagoula Map Turtle

Graptemys gibbonsi

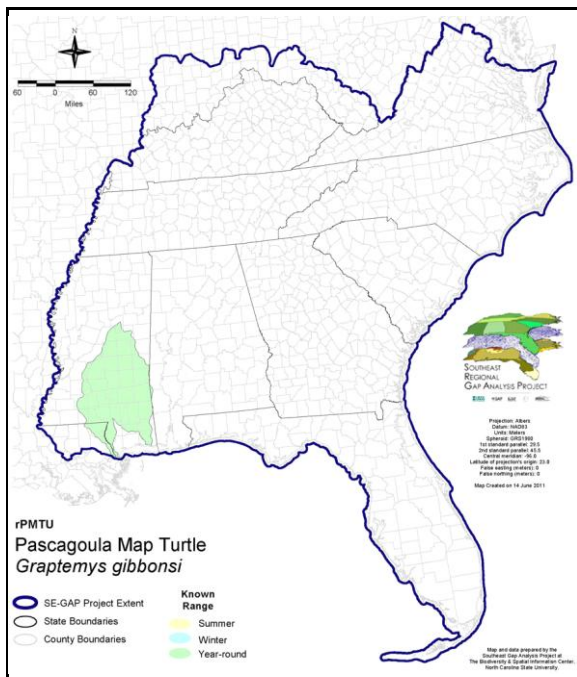
Taxa: Reptilian
 Order: Cryptodeira
 Family: Emydidae

SE-GAP Spp Code: **rPMTU**

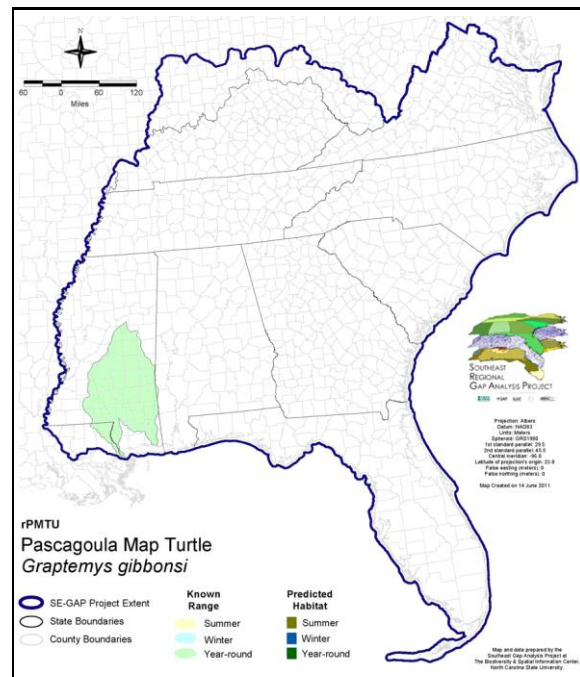
ITIS Species Code: 551767

NatureServe Element Code: ARAAD05130

KNOWN RANGE:



PREDICTED HABITAT:



Range Map Link: http://www.basic.ncsu.edu/segap/datazip/maps/SE_Range_rPMTU.pdf

Predicted Habitat Map Link: http://www.basic.ncsu.edu/segap/datazip/maps/SE_Dist_rPMTU.pdf

GAP Online Tool Link: <http://www.gapservice.ncsu.edu/segap/segap/index2.php?species=rPMTU>

Data Download: http://www.basic.ncsu.edu/segap/datazip/region/vert/rPMTU_se00.zip

PROTECTION STATUS:

Reported on March 14, 2011

Federal Status: ---

State Status: MS (Non-game species in need of management)

NS Global Rank: G2G3

NS State Rank: MS (S1S2)

SUMMARY OF PREDICTED HABITAT BY MANAGMENT AND GAP PROTECTION STATUS:

	US FWS		US Forest Service		Tenn. Valley Author.		US DOD/ACOE	
	ha	%	ha	%	ha	%	ha	%
Status 1	0.4	< 1	0.0	0	0.0	0	0.0	0
Status 2	0.0	0	0.0	0	0.0	0	0.0	0
Status 3	0.0	0	0.0	0	0.0	0	0.0	0
Status 4	0.0	0	0.0	0	0.0	0	0.0	0
Total	0.4	< 1	0.0	0	0.0	0	0.0	0
	US Dept. of Energy		US Nat. Park Service		NOAA		Other Federal Lands	
	ha	%	ha	%	ha	%	ha	%
Status 1	0.0	0	0.0	0	0.0	0	0.0	0
Status 2	0.0	0	0.0	0	0.0	0	0.0	0
Status 3	0.0	0	0.0	0	0.0	0	0.4	< 1
Status 4	0.0	0	0.0	0	0.0	0	0.0	0
Total	0.0	0	0.0	0	0.0	0	0.4	< 1
	Native Am. Reserv.		State Park/Hist. Park		State WMA/Gameland		State Forest	
	ha	%	ha	%	ha	%	ha	%
Status 1	0.0	0	0.0	0	0.0	0	0.0	0
Status 2	0.0	0	0.0	0	13.5	2	0.0	0
Status 3	0.0	0	0.0	0	0.0	0	0.0	0
Status 4	0.0	0	0.0	0	0.0	0	0.0	0
Total	0.0	0	0.0	0	13.5	2	0.0	0
	State Coastal Reserve		ST Nat.Area/Preserve		Other State Lands		Private Cons. Easemt.	
	ha	%	ha	%	ha	%	ha	%
Status 1	0.0	0	0.0	0	0.0	0	0.0	0
Status 2	3.8	< 1	0.0	0	0.0	0	0.0	0
Status 3	0.0	0	0.0	0	0.0	0	0.0	0
Status 4	0.0	0	0.0	0	0.0	0	0.0	0
Total	3.8	< 1	0.0	0	0.0	0	0.0	0
	Private Land - No Res.		Water		Overall Total			
	ha	%	ha	%	ha	%	ha	%
Status 1	0.0	0	0.0	0	0.4	< 1		
Status 2	0.0	0	0.0	0	17.3	2		
Status 3	0.0	0	0.0	0	0.4	< 1		
Status 4	754.7	88	84.6	10	839.3	98		
Total	754.7	88	84.6	10	857.3	100		

GAP Status 1: An area having permanent protection from conversion of natural land cover and a mandated management plan in operation to maintain a natural state within which disturbance events (of natural type, frequency, and intensity) are allowed to proceed without interference or are mimicked through management.

GAP Status 2: An area having permanent protection from conversion of natural land cover and a mandated management plan in operation to maintain a primarily natural state, but which may receive use or management practices that degrade the quality of existing natural communities.

GAP Status 3: An area having permanent protection from conversion of natural land cover for the majority of the area, but subject to extractive uses of either a broad, low-intensity type or localized intense type. It also confers protection to federally listed endangered and threatened species throughout the area.

GAP Status 4: Lack of irrevocable easement or mandate to prevent conversion of natural habitat types to anthropogenic habitat types. Allows for intensive use throughout the tract. Also includes those tracts for which the existence of such restrictions or sufficient information to establish a higher status is unknown.

PREDICTED HABITAT MODEL(S):

Year-round Model:

Habitat Description: This map turtle inhabits the main channel of rivers of large to medium sized rivers with gravel and sand bottoms, often in swift currents (Ernst et al 1994, NatureServe 2005). Nesting takes place in sandy banks or sand bars. Amy Silvano 7jul05

Ecosystem Classifiers: Aquatic species, only terrestrial systems selected apply to nesting habitat.
****Width of stream would be a good layer for predicting this species occurrence in rivers and streams (if categorized would include in medium and large streams/rivers). Flow Accumulation may be a good predictor for this species since it needs wider, moving rivers and streams. Probably could set minimum threshold for accumulation, can't find any literature to support and type of slope, threshold etc., but in CP could probably use min of 5-10. Amy Silvano 7jul05

Hydrography Mask:

Freshwater Only

Utilizes flowing water features with buffers of 60m from and 60m into selected water features.

Selected Map Units:

Functional Group	Map Unit Name
Anthropogenic	Bare Sand
Anthropogenic	Bare Soil
Beach	Unconsolidated Shore (Beach/Dune)
Water	Open Water (Fresh)
Wetlands	Unconsolidated Shore (Lake/River/Pond)

CITATIONS:

For more information:: SE-GAP Analysis Project / BaSIC
127 David Clark Labs
Dept. of Biology, NCSU
Raleigh, NC 27695-7617
(919) 513-2853
www.basic.ncsu.edu/segap

Compiled: 15 September 2011

This data was compiled and/or developed by the Southeast GAP Analysis Project at The Biodiversity and Spatial Information Center, North Carolina State University.